

Changes Maps



Greater Cambridge Local Plan

Published as part of the Proposed Submission Local Plan
- Regulation 19 consultation (August 2026 -September
2026)



GREATER CAMBRIDGE
SHARED PLANNING

Contents

Introduction.....	2
Defined Development Extent (DDE).....	3
Policy Areas.....	9
S/PRIA/EG: Eastern Gate.....	9
S/CBN: Cambourne North.....	10
S/GF: Land adjacent to A11 and A1307 at Grange Farm.....	11
S/NS: Northstowe.....	12
S/WNT: Waterbeach New Town.....	13
S/AMC/NEC: North East Cambridge.....	14
S/EOC/FRE: Fulbourn Road East.....	14
S/AMC/WGC: Wellcome Genome Campus, Hinxton.....	15
S/AMC/FD: Fen Drayton Former Land Settlement Association Estate.....	16
Retail Centres.....	17
Site allocations.....	18
S/C/LCR: Land at Clifton Road (including Cambridge Junction and Cambridge Leisure).....	18
S/C/PPS: Police Station, Parkside.....	19
S/C/MRG: Milton Road Garages.....	20
S/C/OPM: Old Press/Mill Lane.....	21
S/EOC/IDH: Ida Darwin Hospital.....	22
Policy S/CBN: Cambourne North.....	23
Policy S/GF: Land adjacent to A11 and A1307 at Grange Farm.....	24
S/NS: Northstowe.....	25
S/BA: Bourn Airfield New Village.....	26
Policy S/WGC: Wellcome Genome Campus – Expansion Land, Hinxton.....	27
Policy S/RSC/BRC: Babraham Research Campus.....	28
Policy S/RSC/FSS: Former Spicers Site, Sawston Business Park, Sawston....	29

Introduction

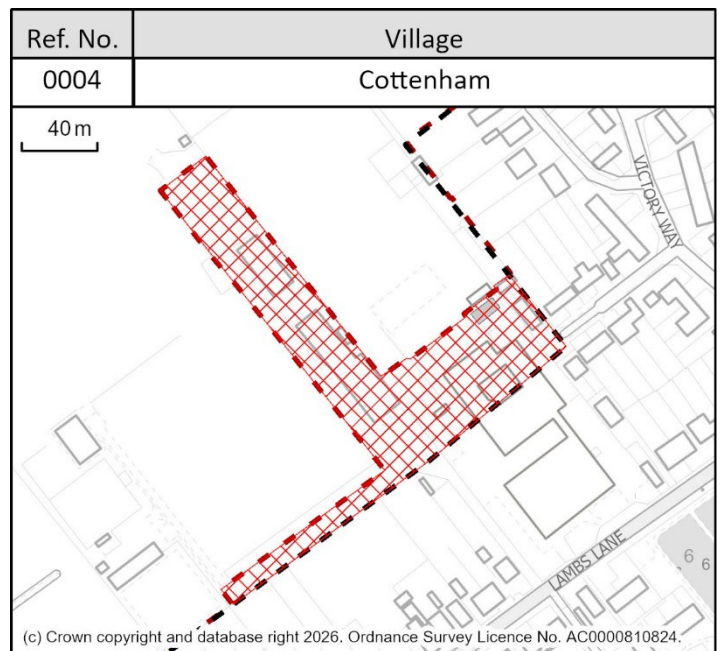
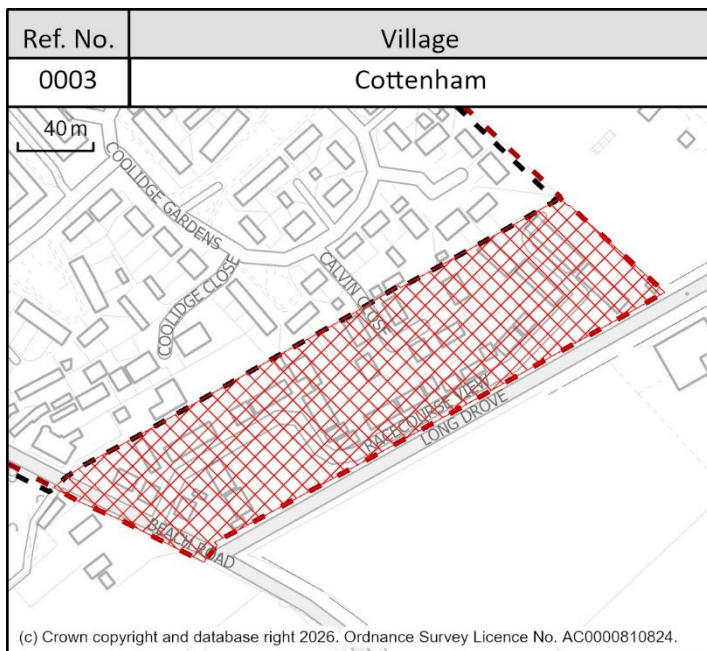
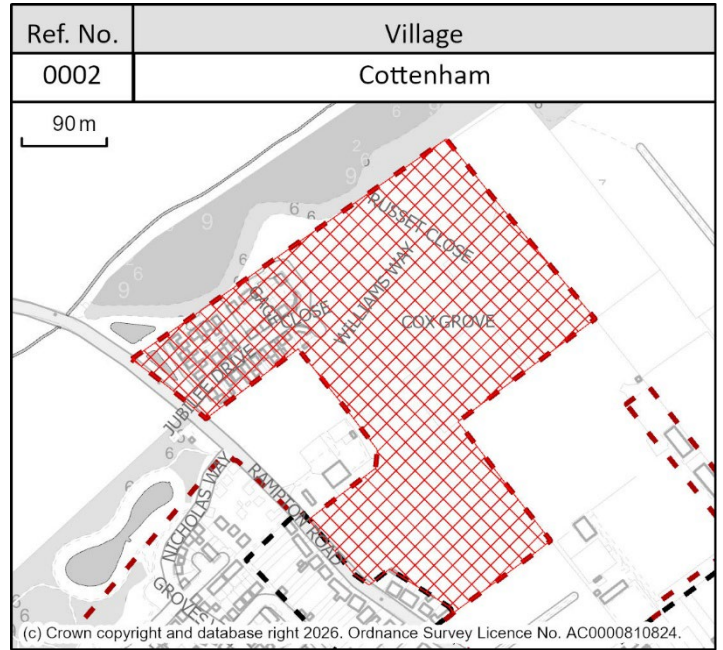
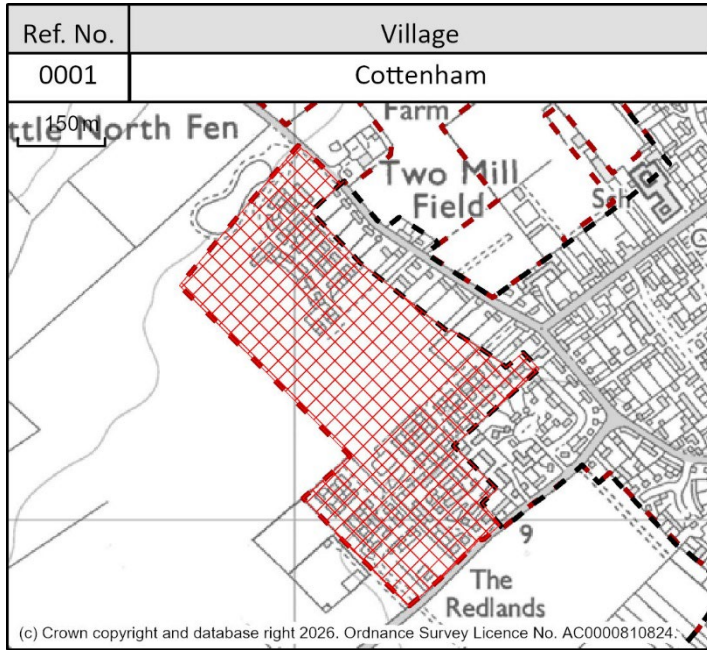
1.1 This document provides a record of changes to maps since the previous stage of consultation that took place from December 2025 to January 2026. The changes to maps result as a response to representations received, or to amend errors in attribute data or visual inconsistencies that were identified in previous versions.

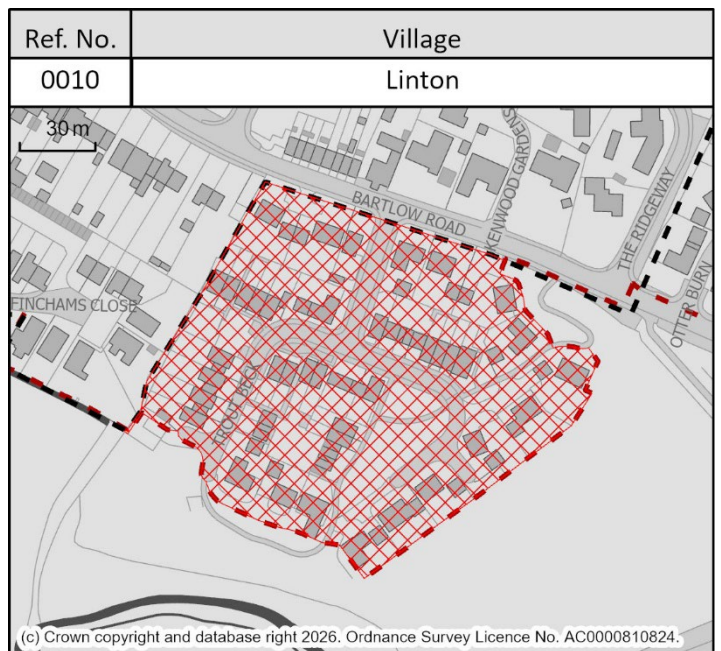
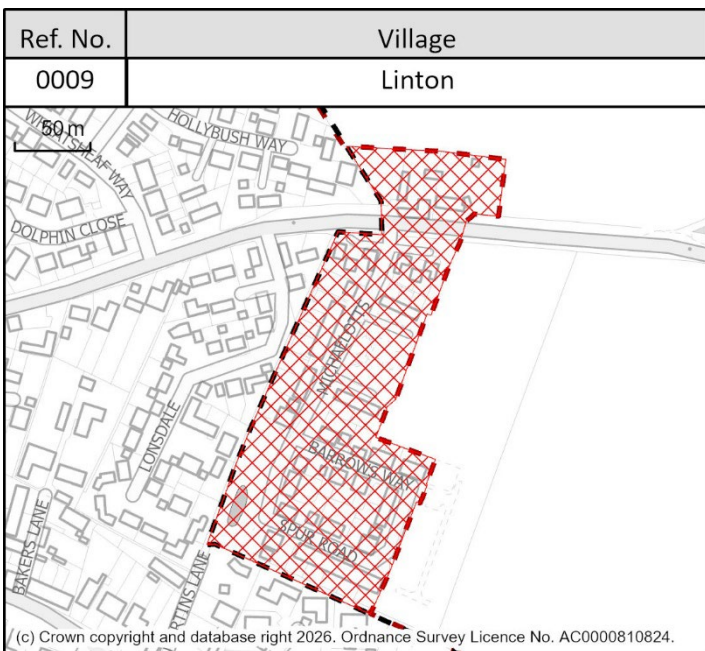
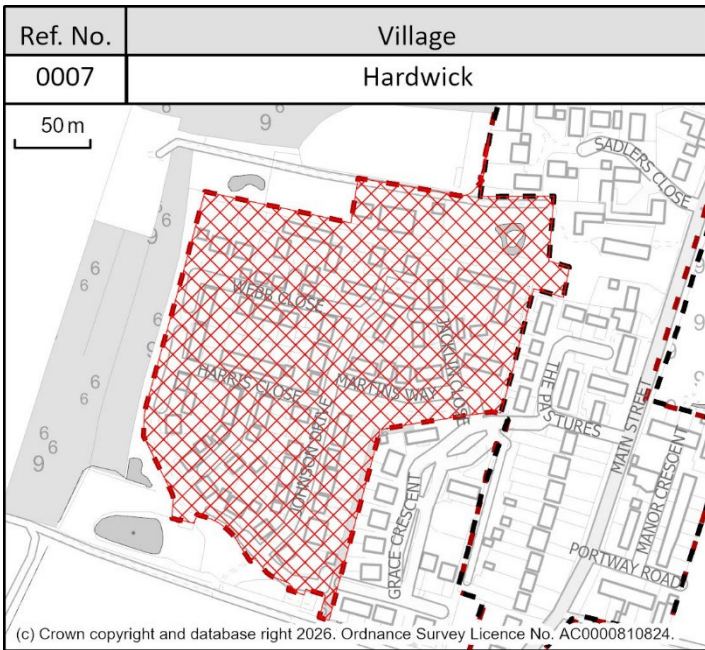
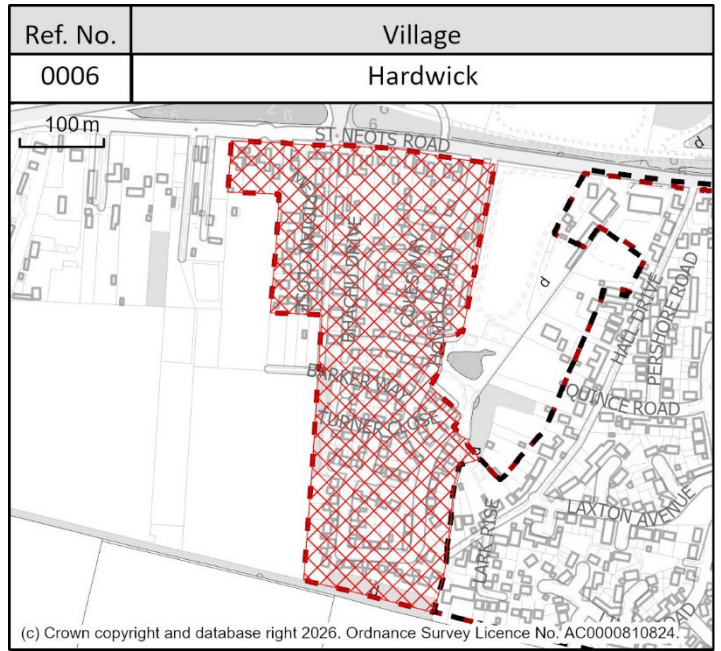
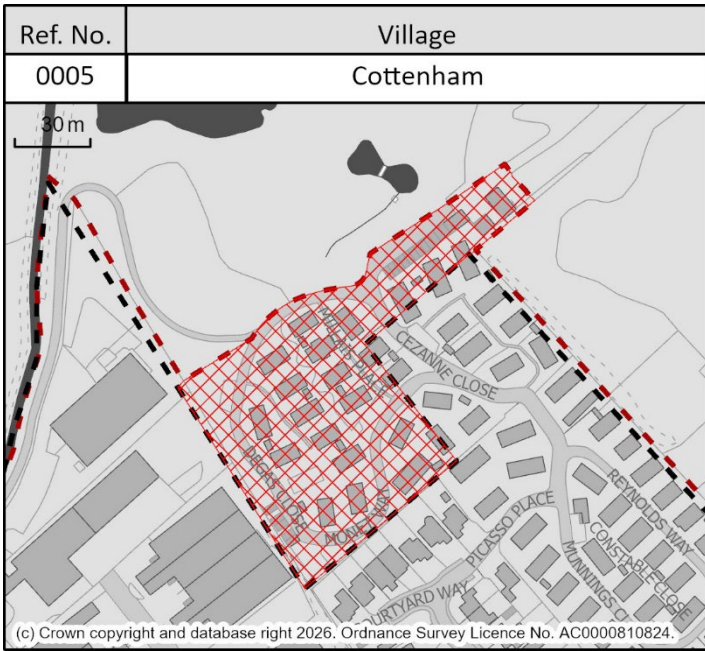
1.2 The changes maps capture changes to the following layers:

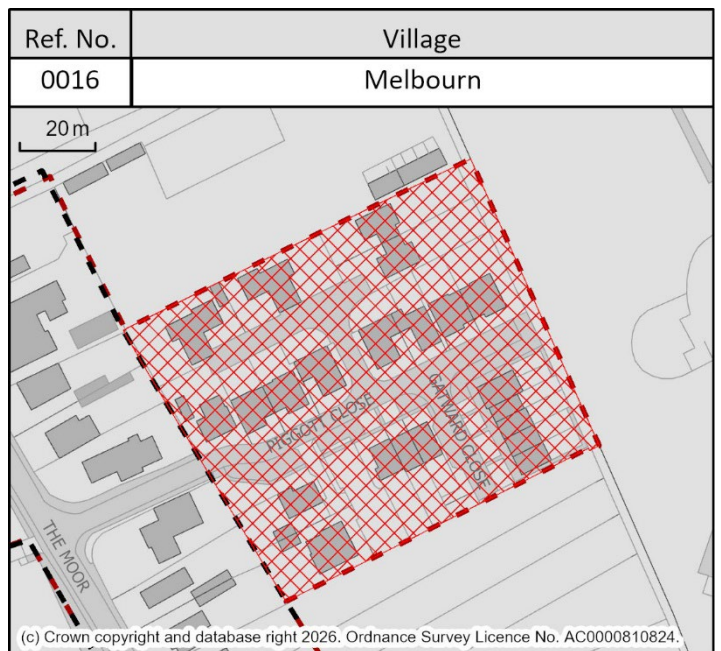
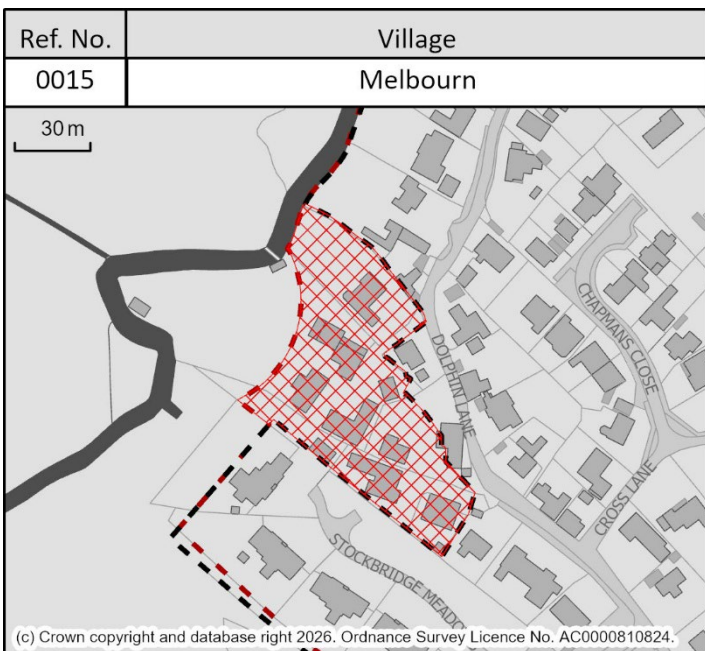
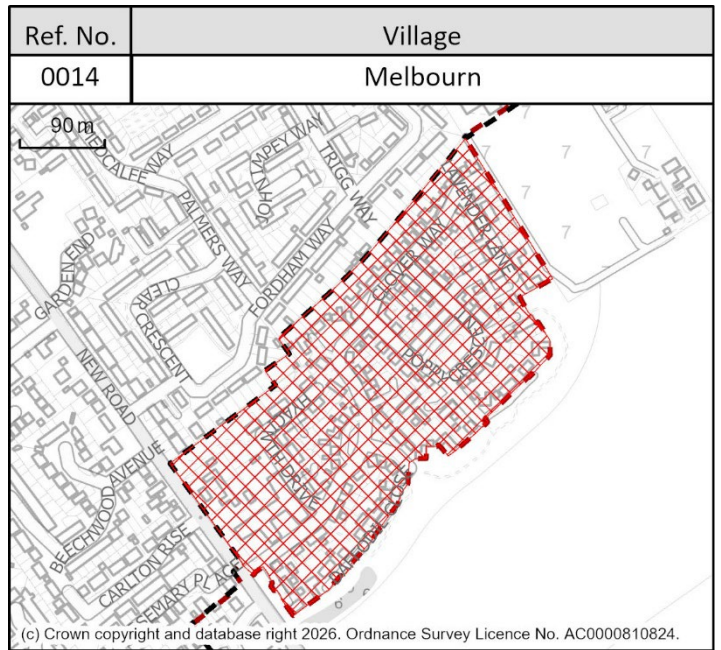
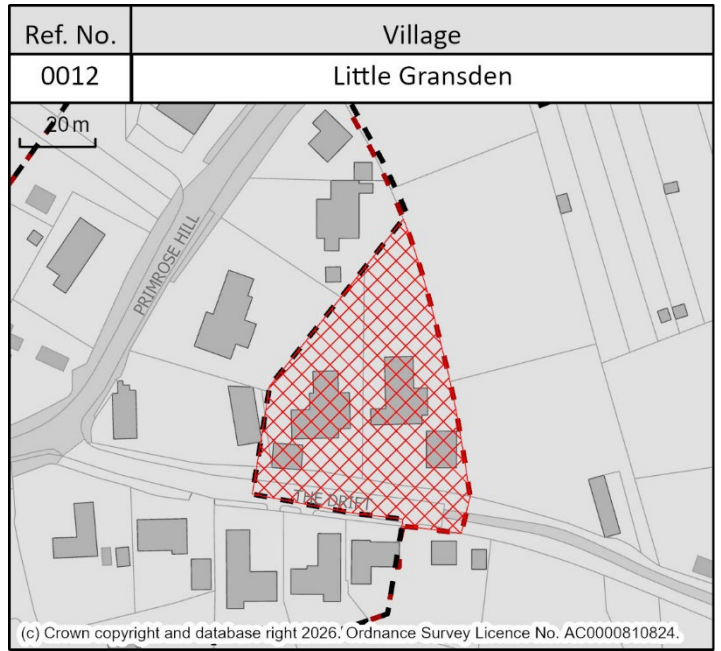
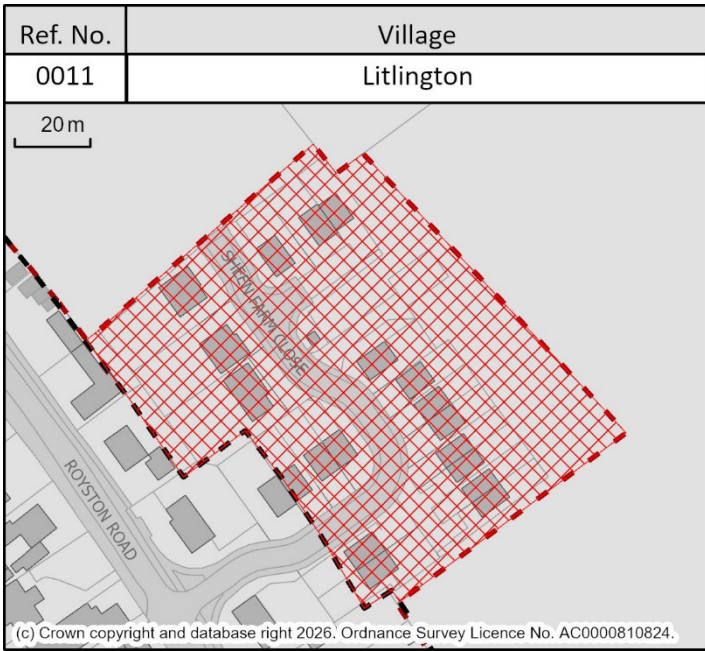
- Defined Development Extent (DDE)
- Policy Areas
- Retail Centres
- Site Allocations

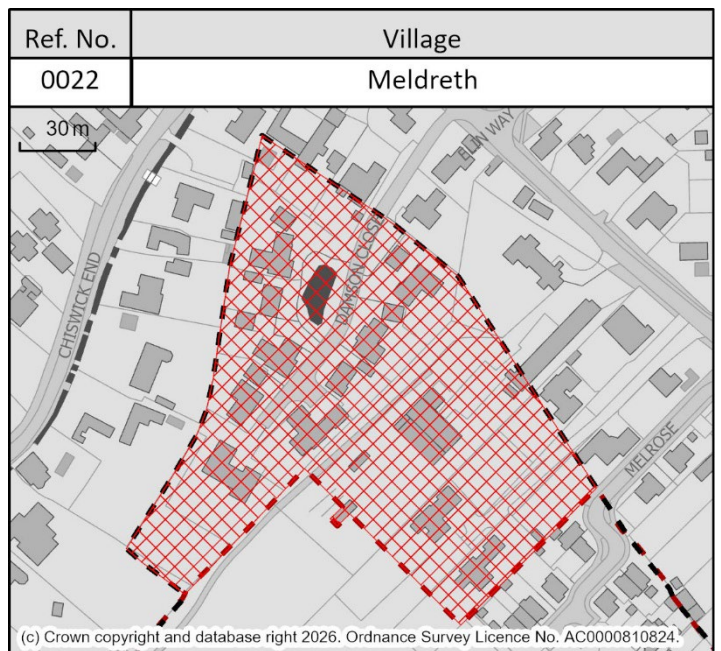
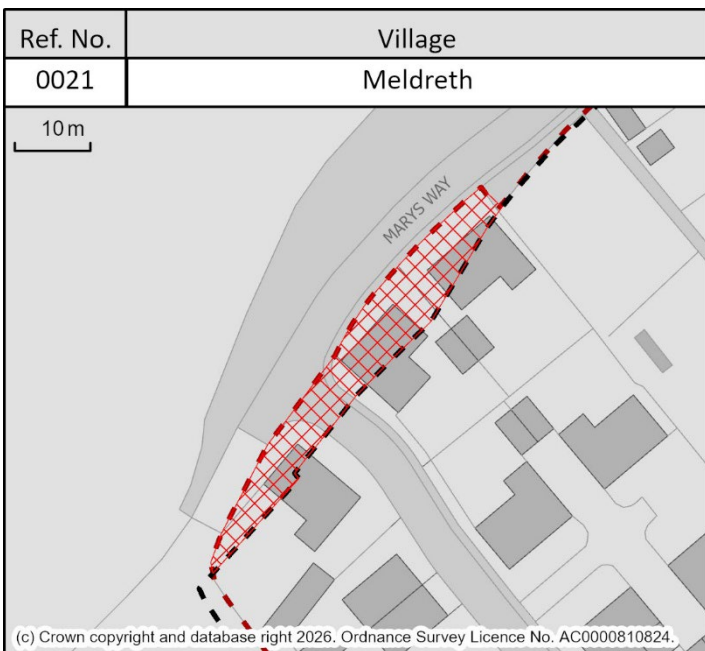
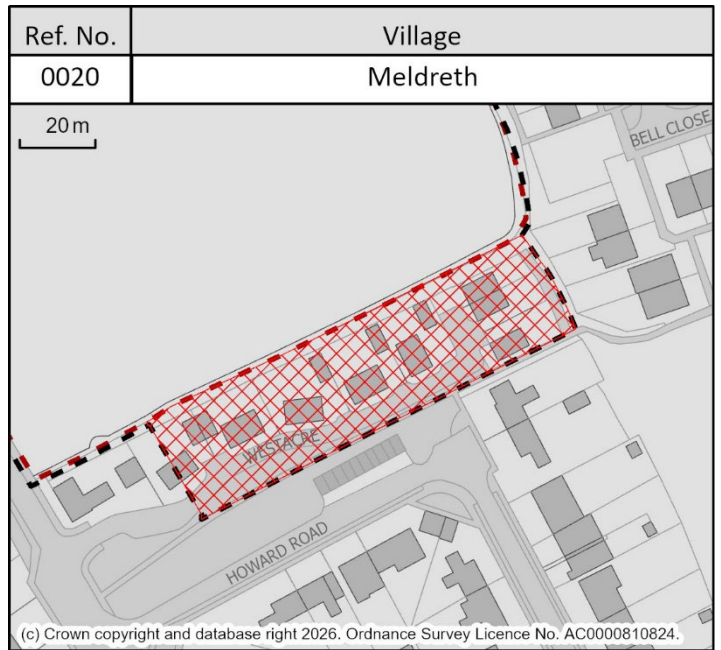
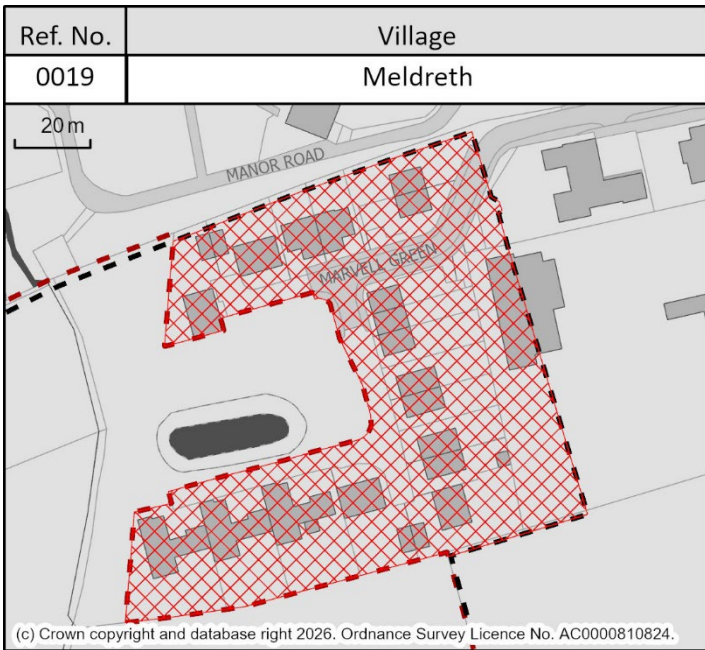
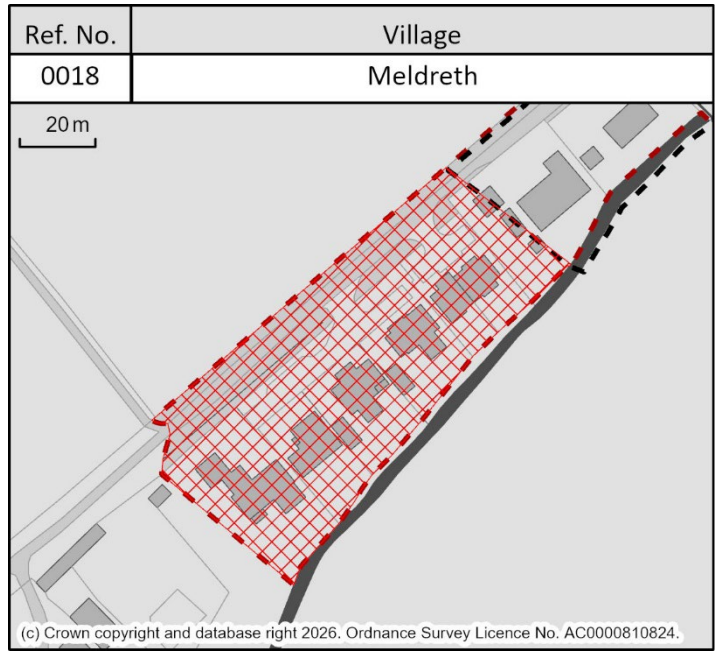
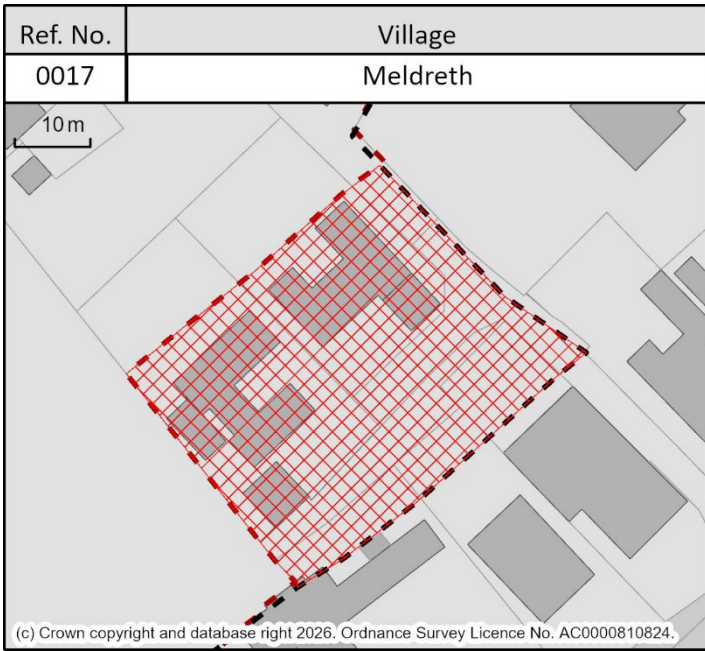
1.3 Changes were also made to map layers and attribute data for Public Open Spaces and Public Houses, but due to the number of changes, individual changes maps were not created. The changes can be found on the Digital Local Plan Map that is published alongside the Proposed Submission Greater Cambridge Local Plan.

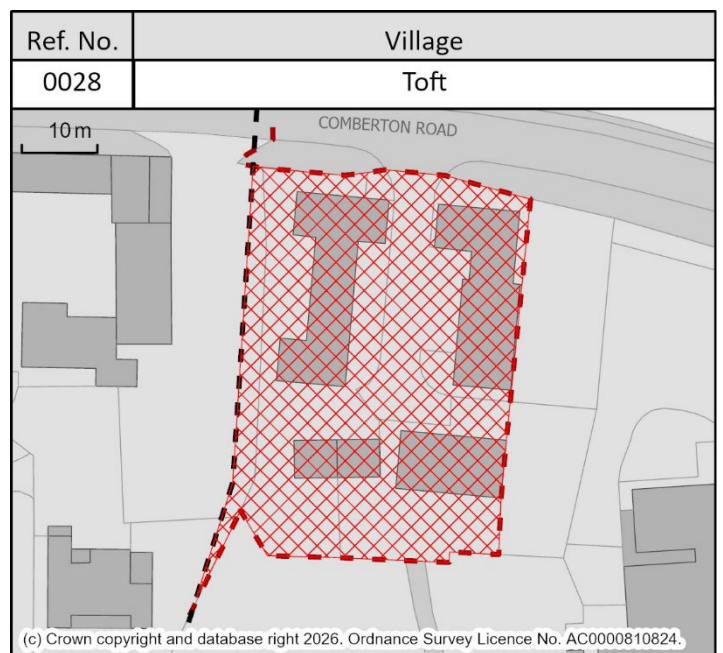
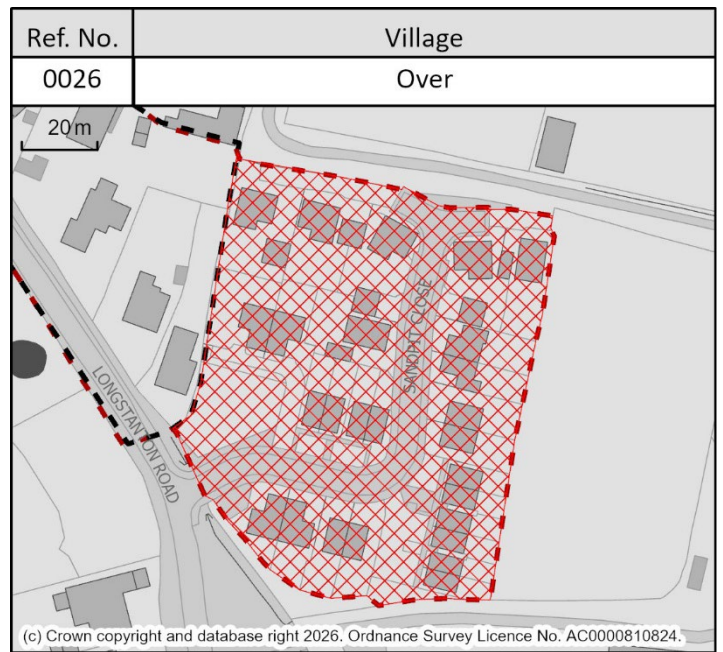
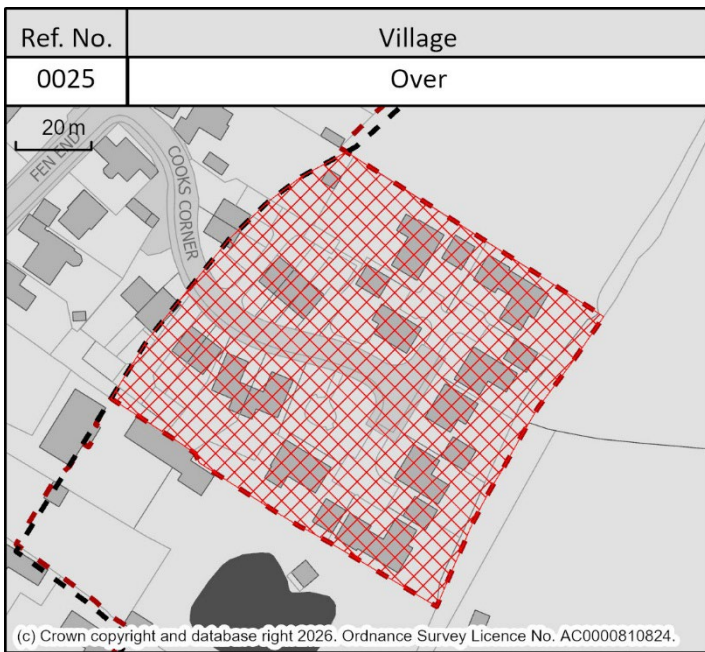
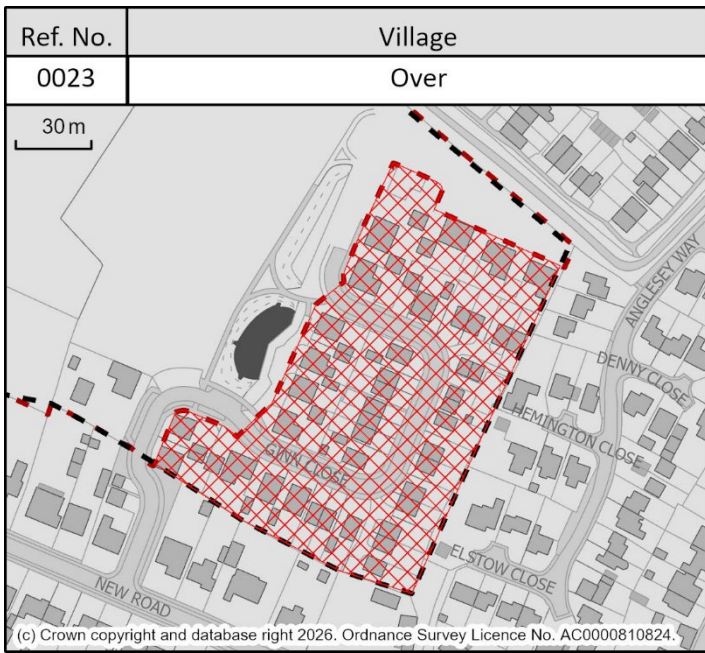
Defined Development Extent (DDE)

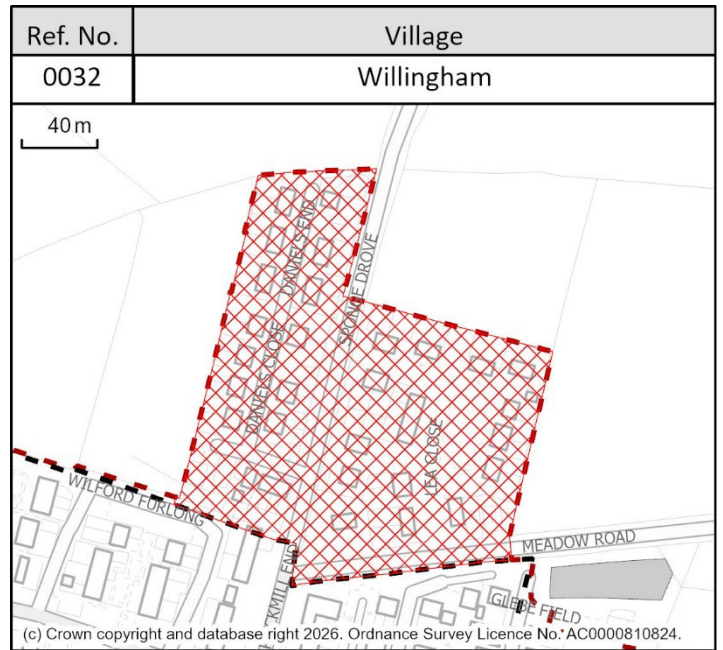
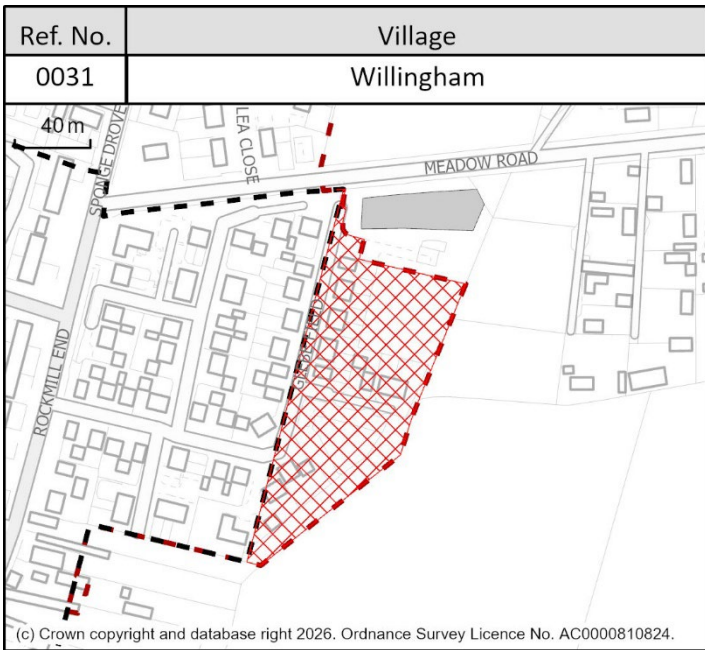




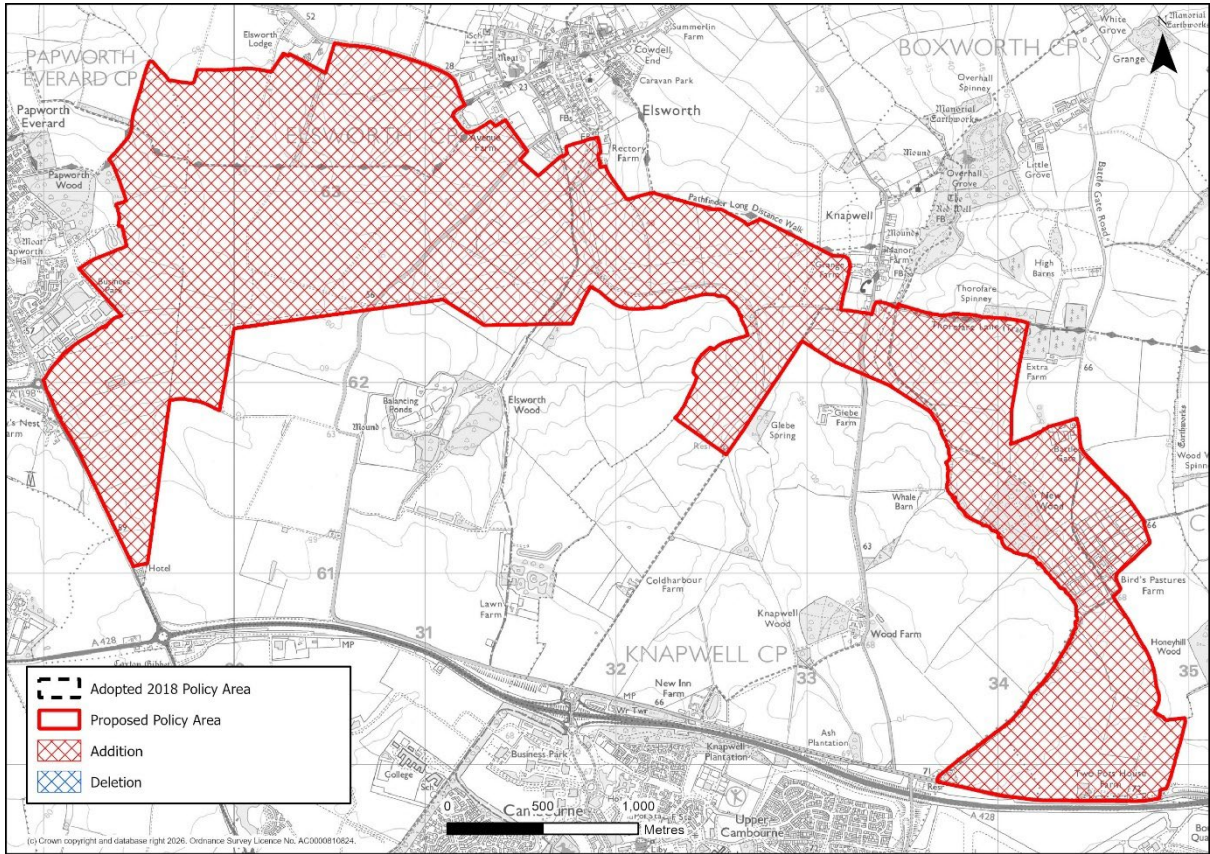




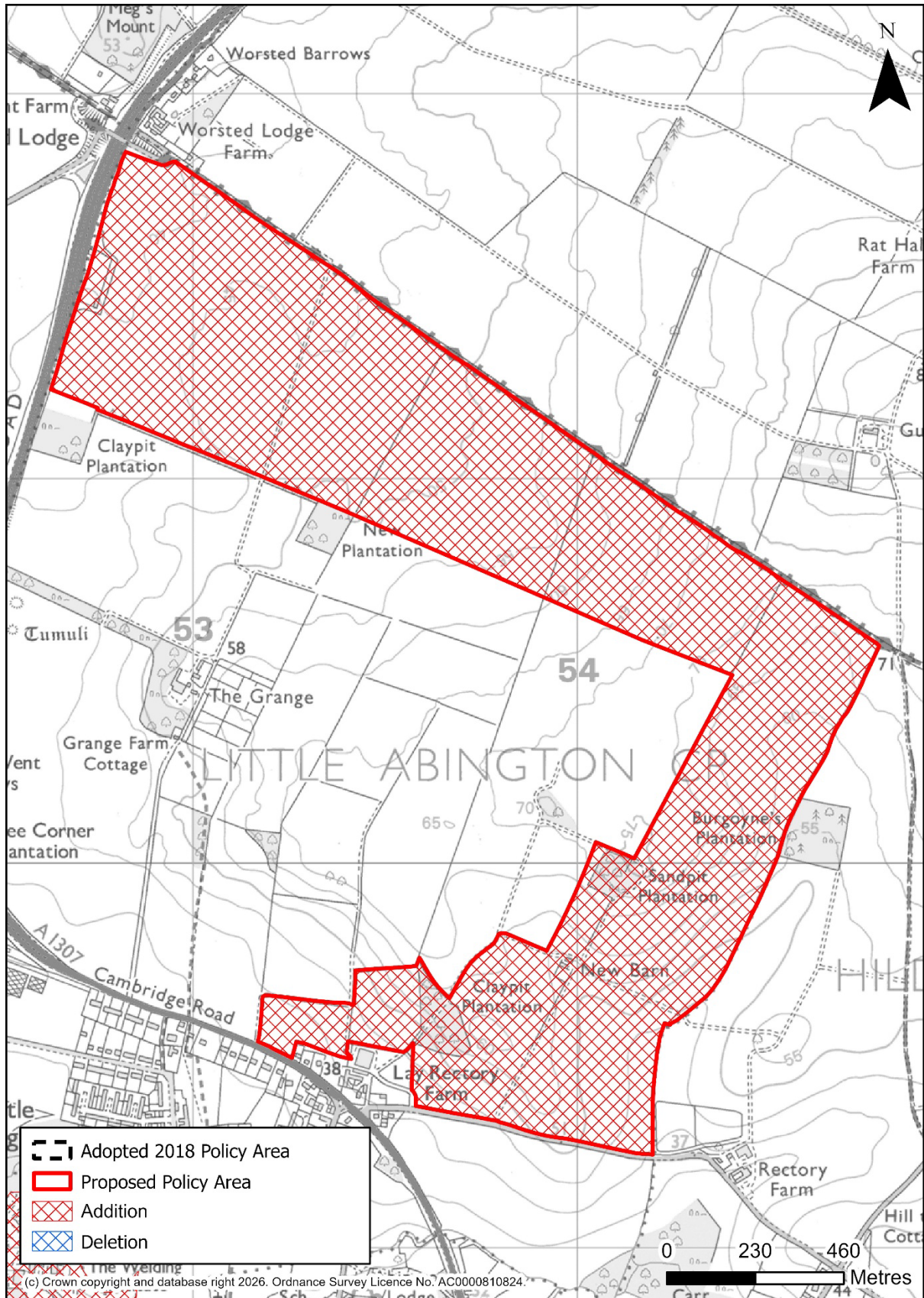




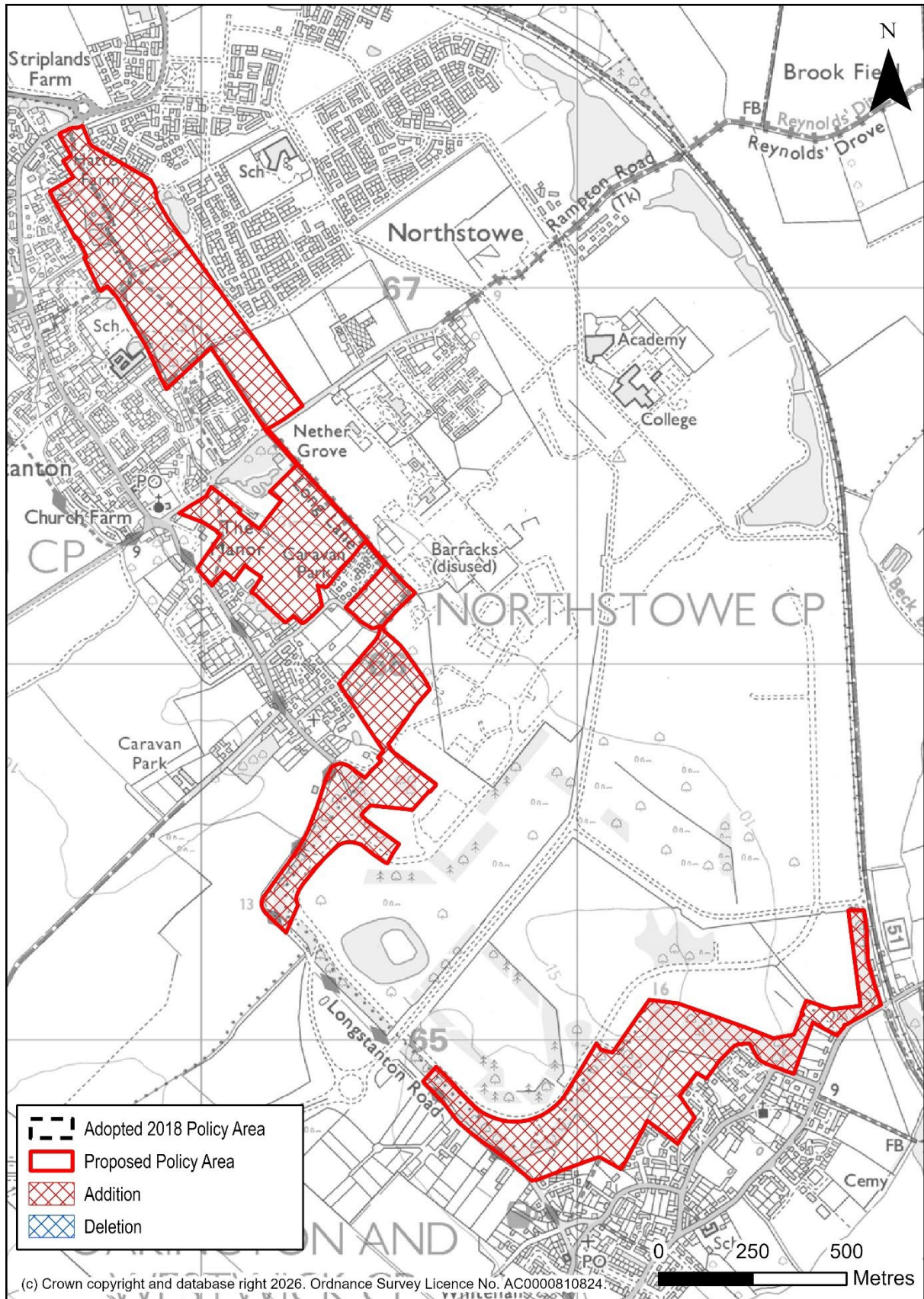
S/CBN: Cambourne North



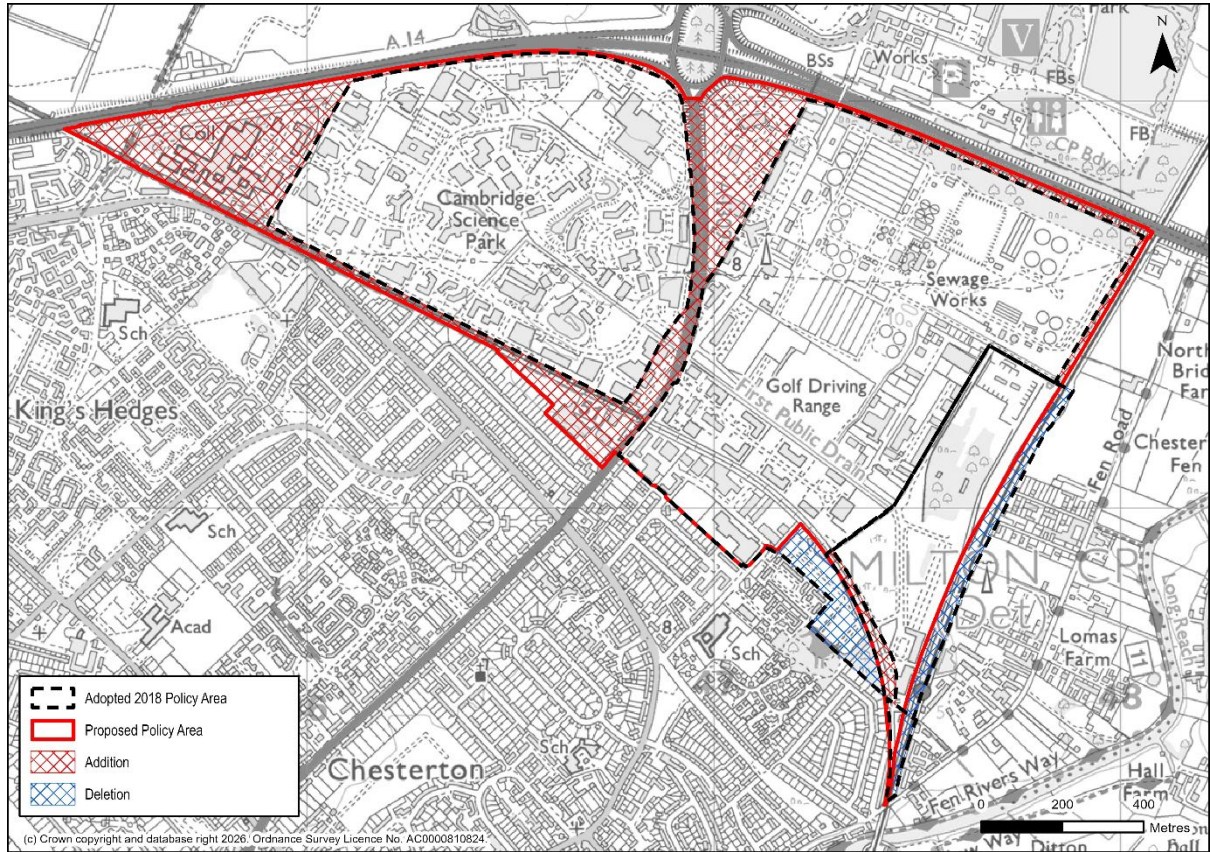
S/GF: Land adjacent to A11 and A1307 at Grange Farm



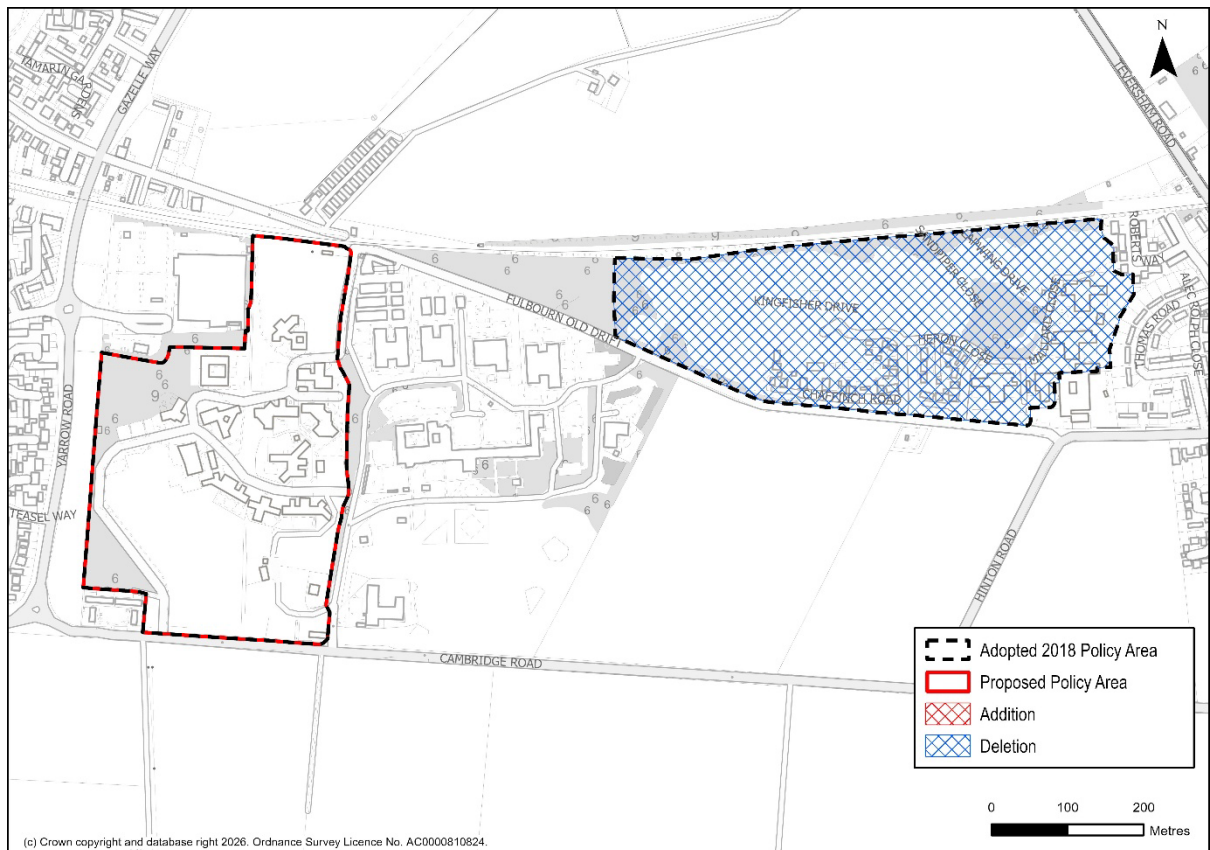
S/NS: Northstowe



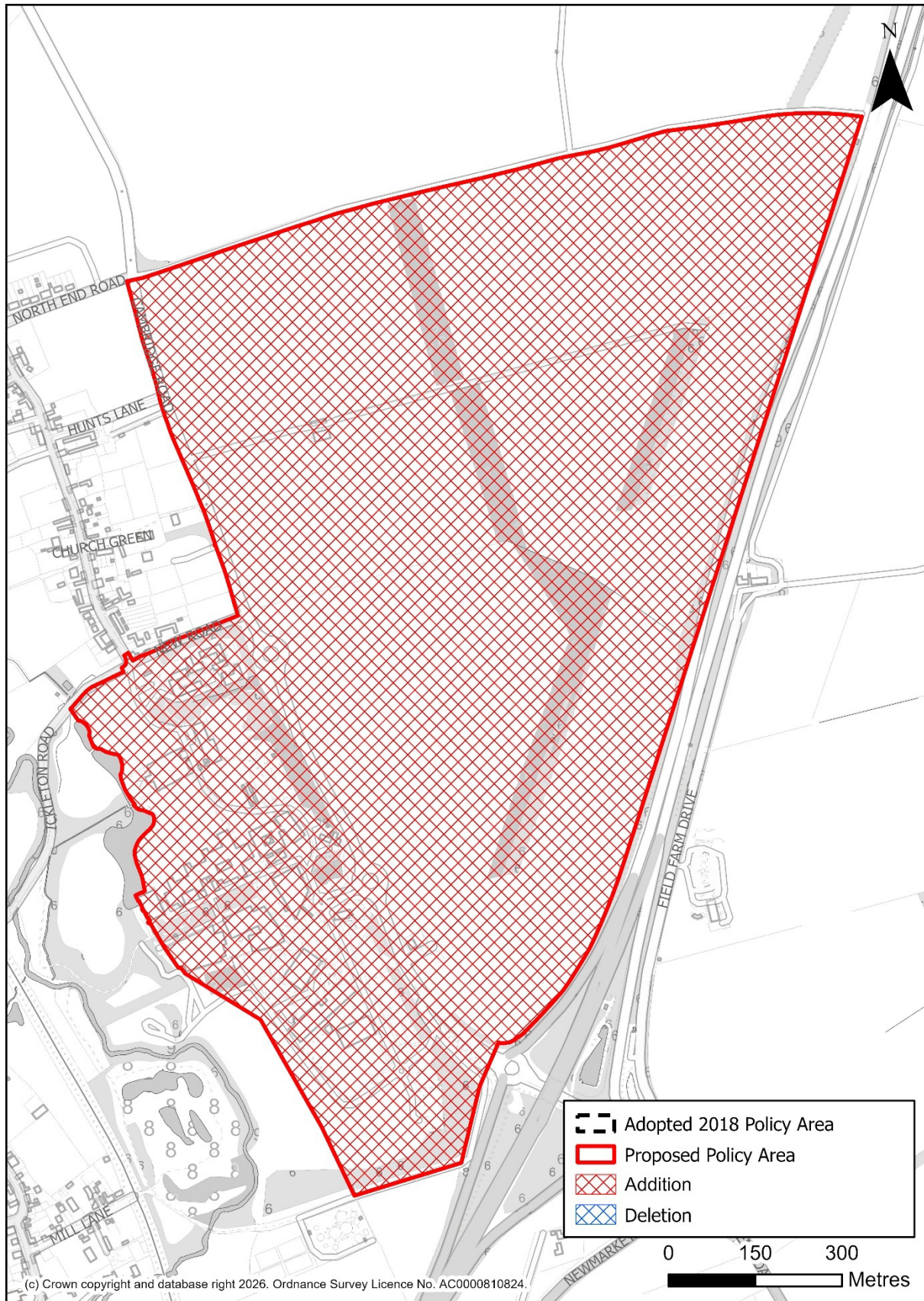
S/AMC/NEC: North East Cambridge



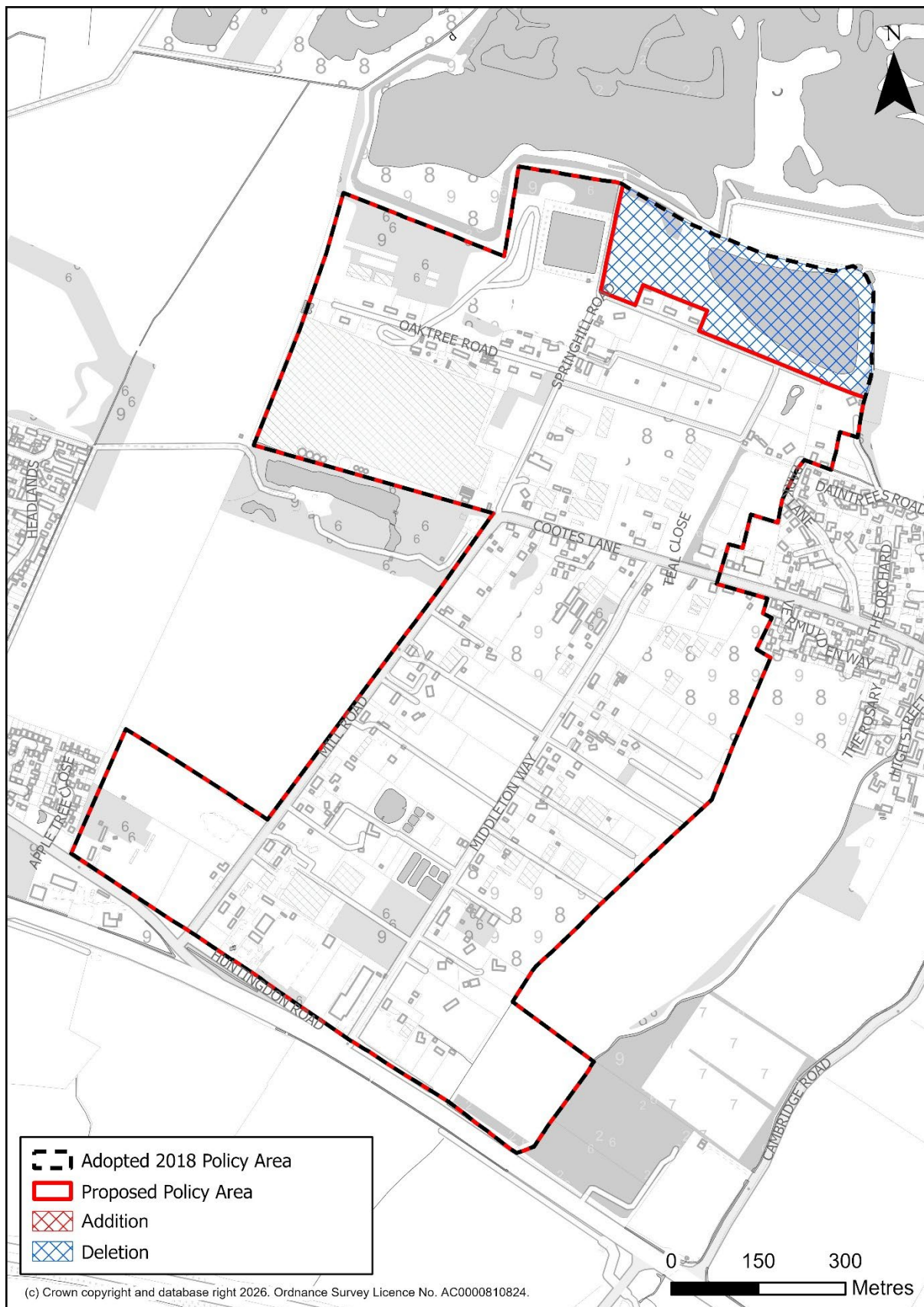
S/EOC/FRE: Fulbourn Road East



S/AMC/WGC: Wellcome Genome Campus, Hinxton



S/AMC/FD: Fen Drayton Former Land Settlement Association Estate



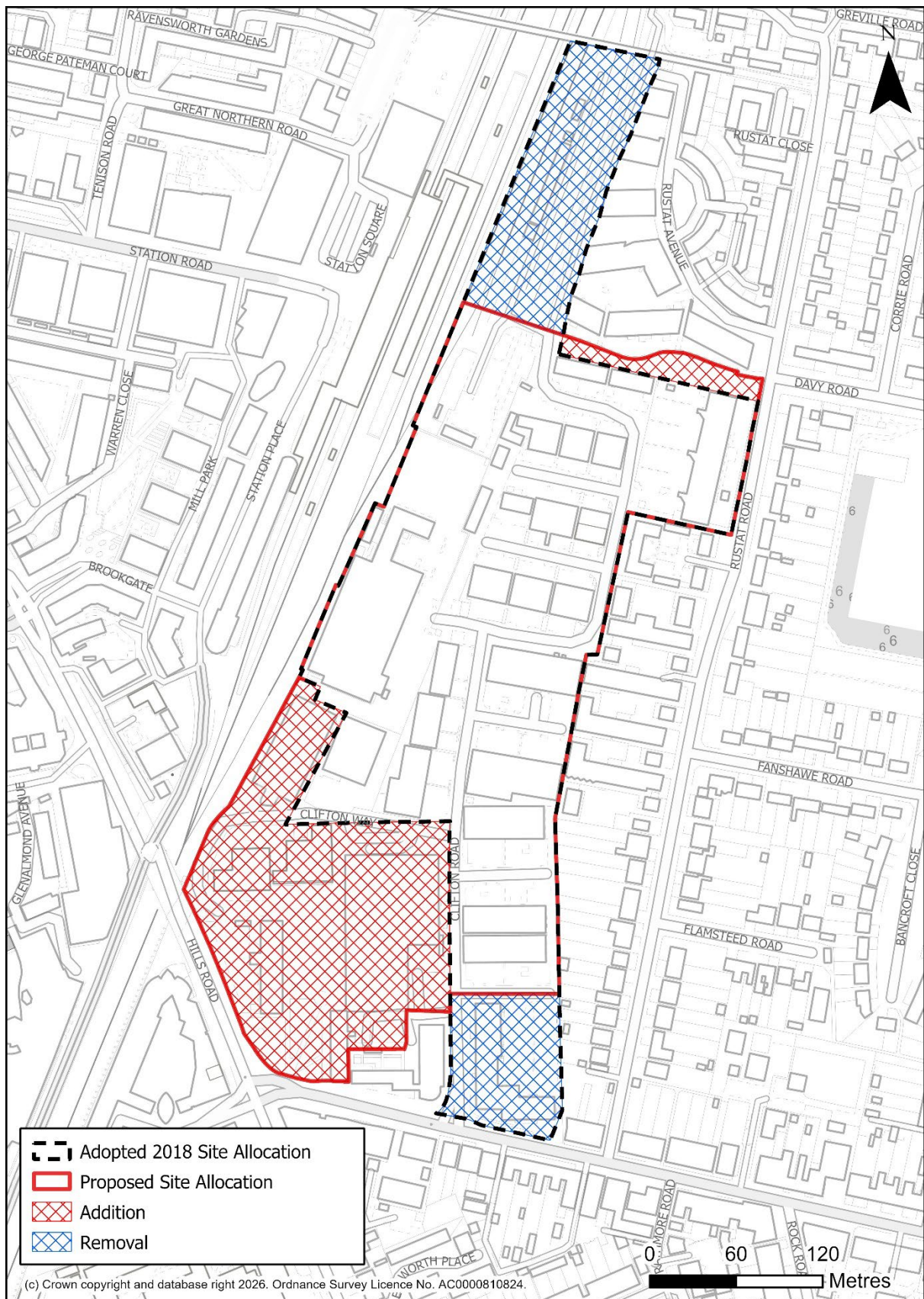
Retail Centres

Clay Farm



Site allocations

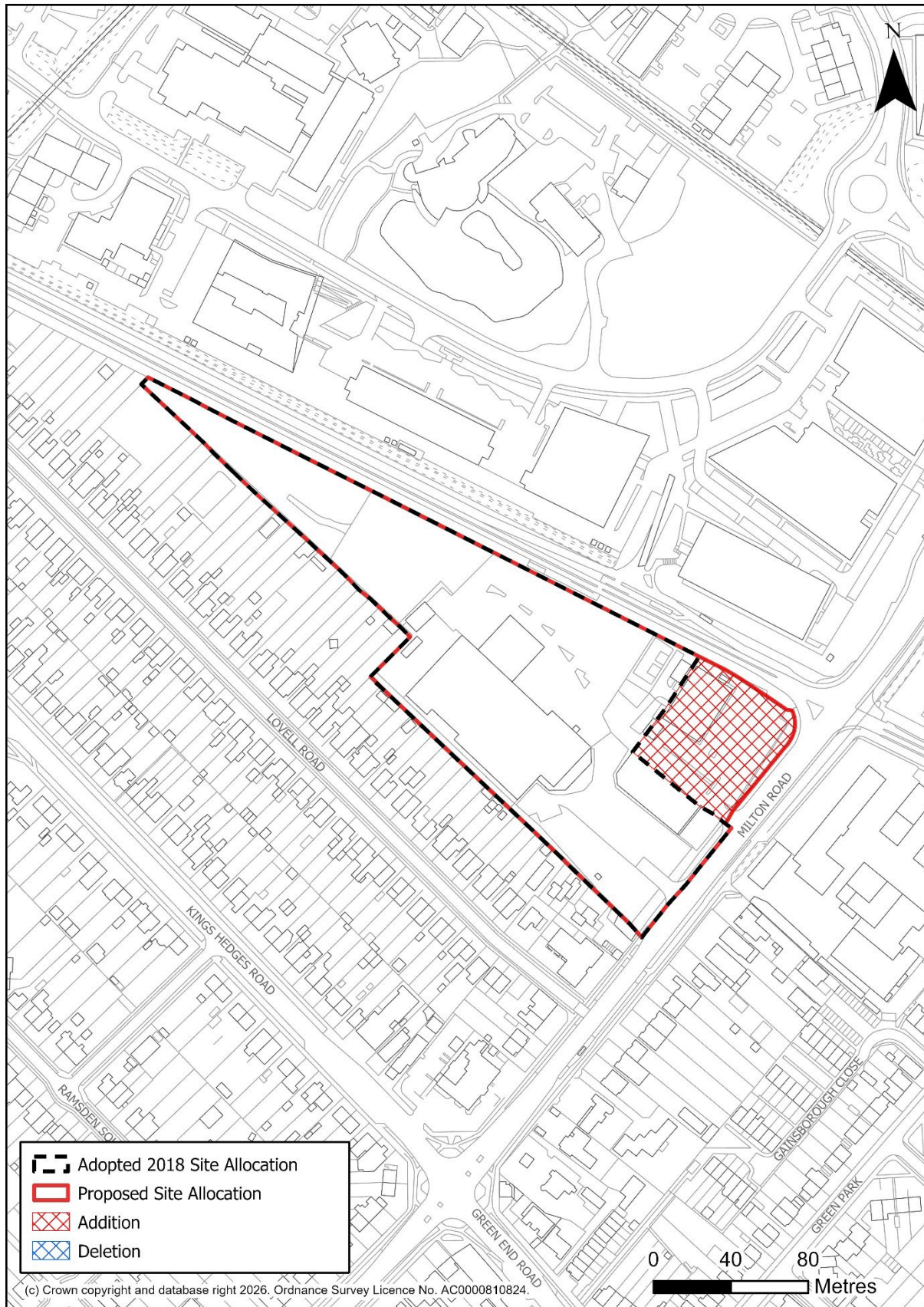
S/C/LCR: Land at Clifton Road (including Cambridge Junction and Cambridge Leisure)



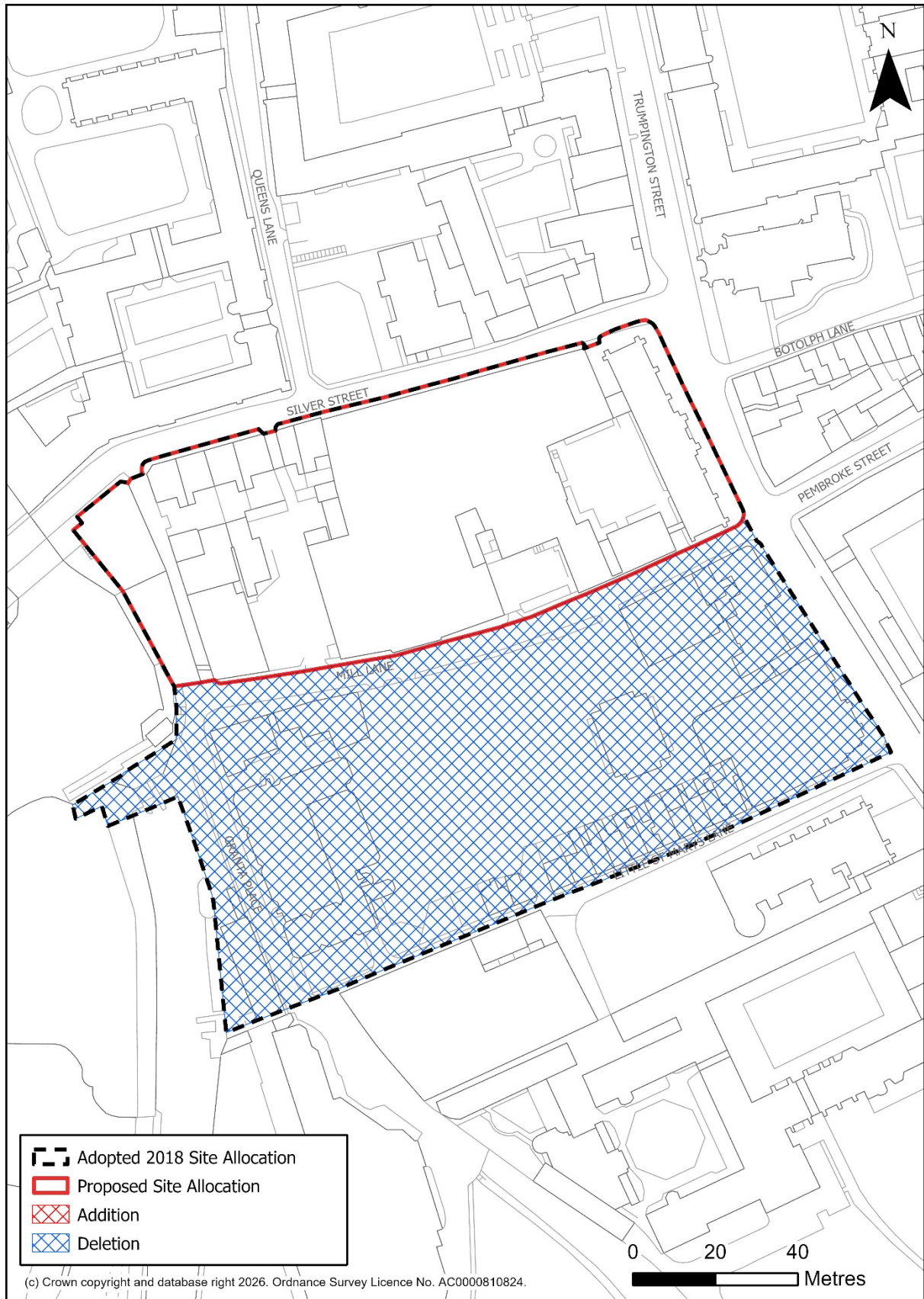
S/C/PPS: Police Station, Parkside



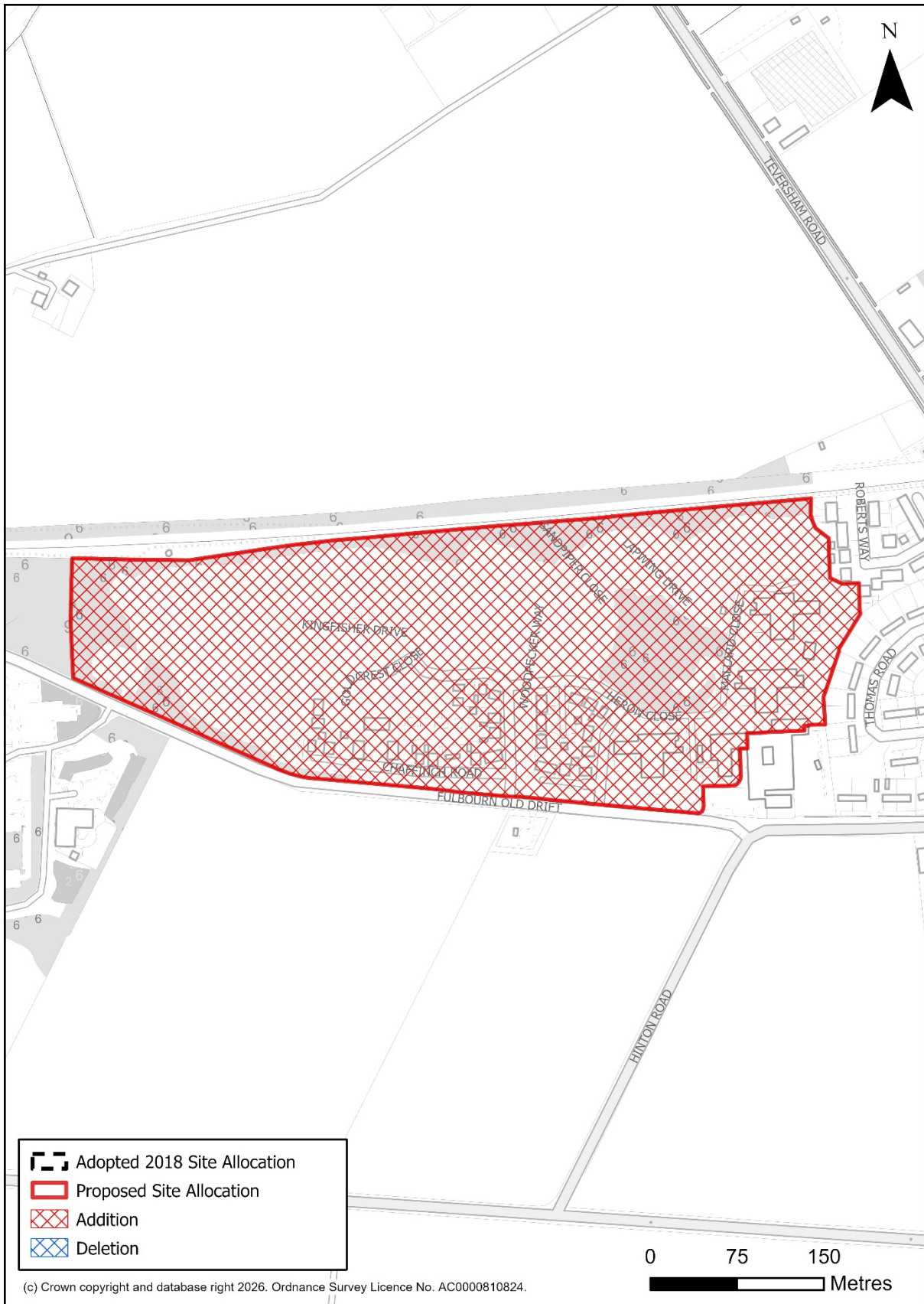
S/C/MRG: Milton Road Garages



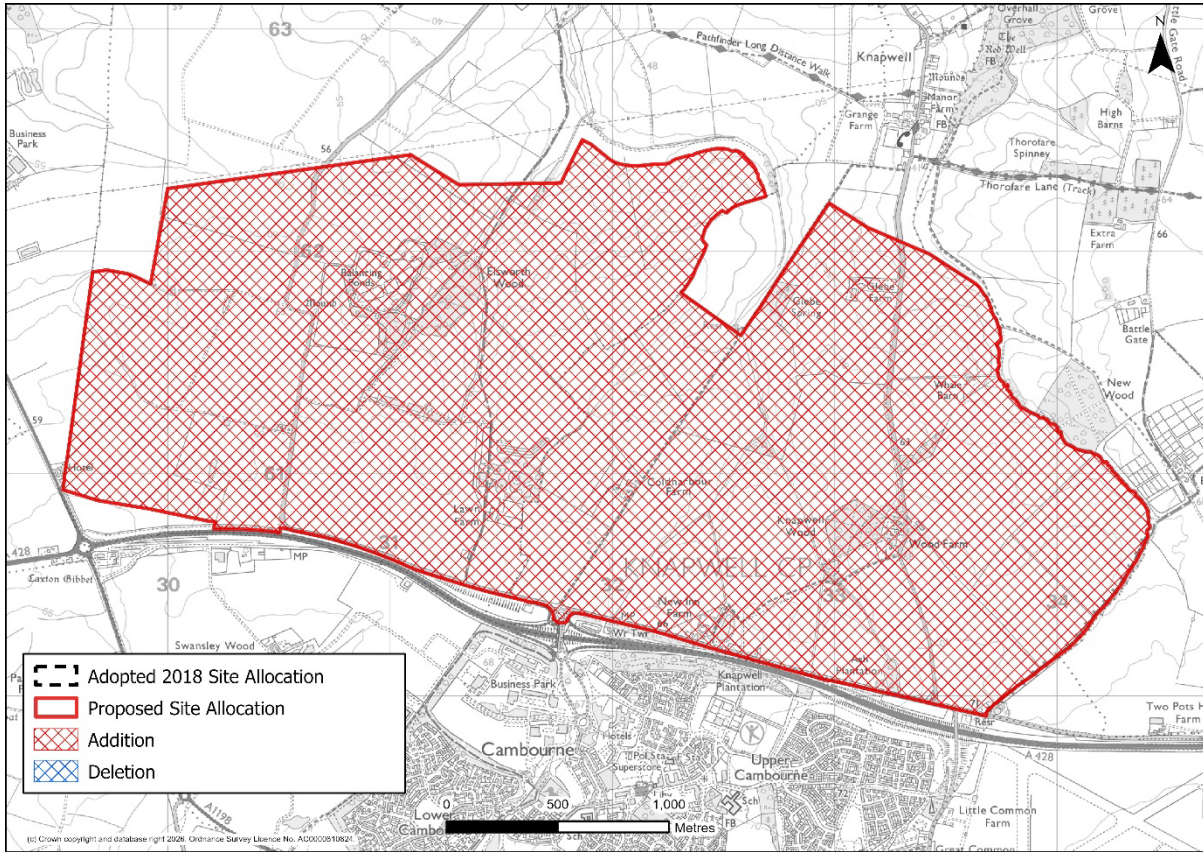
S/C/OPM: Old Press/Mill Lane



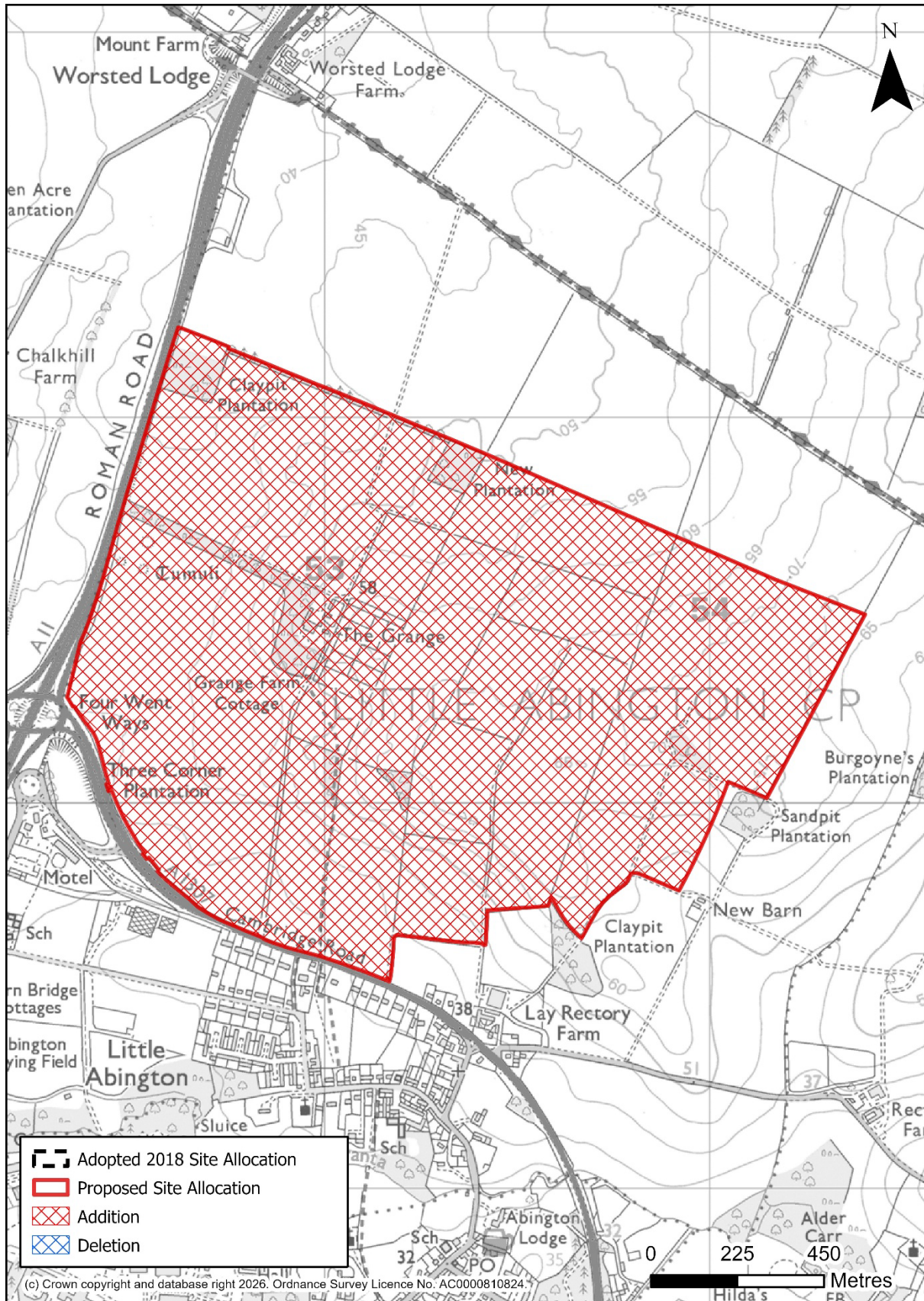
S/EOC/IDH: Ida Darwin Hospital



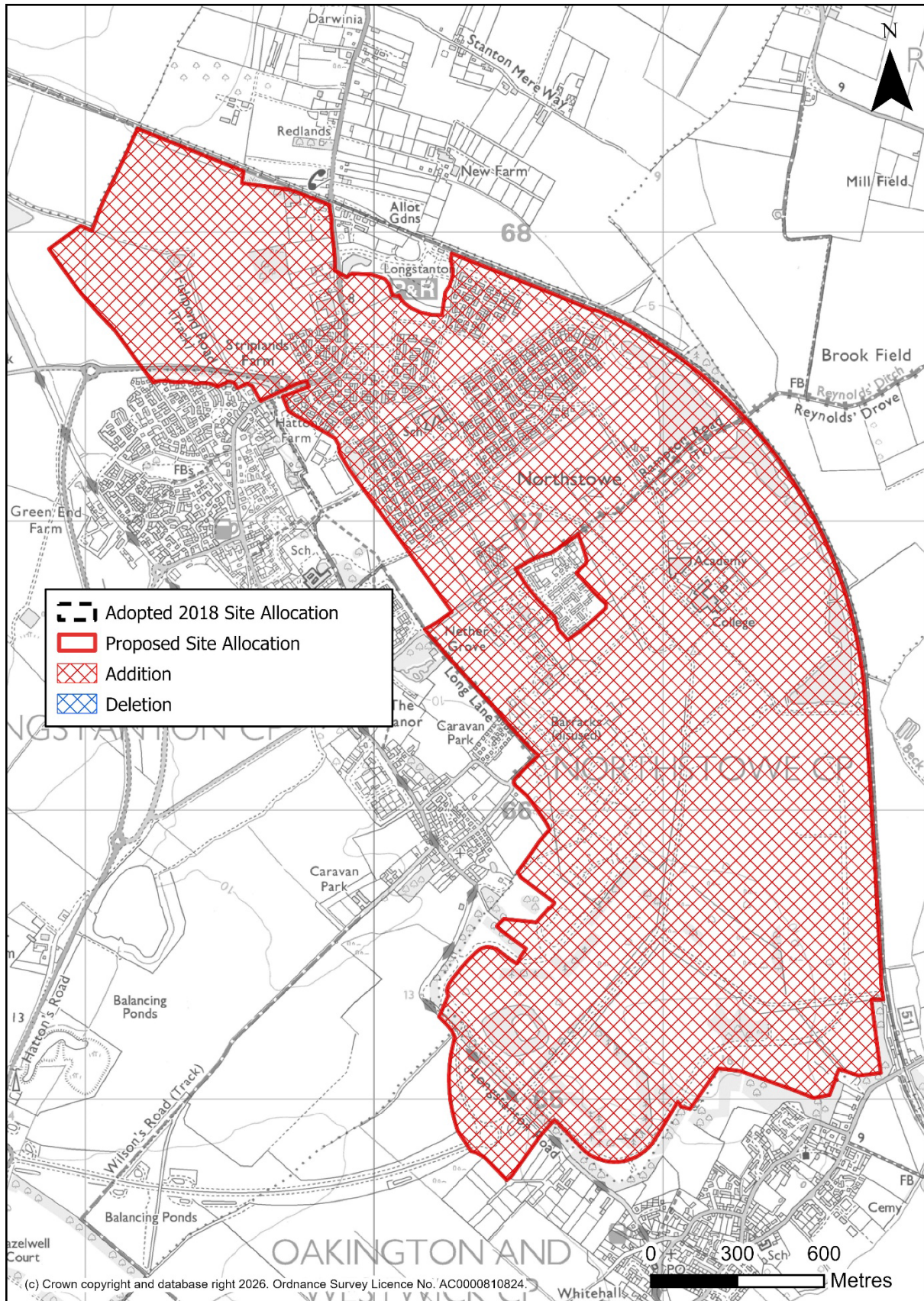
Policy S/CBN: Cambourne North



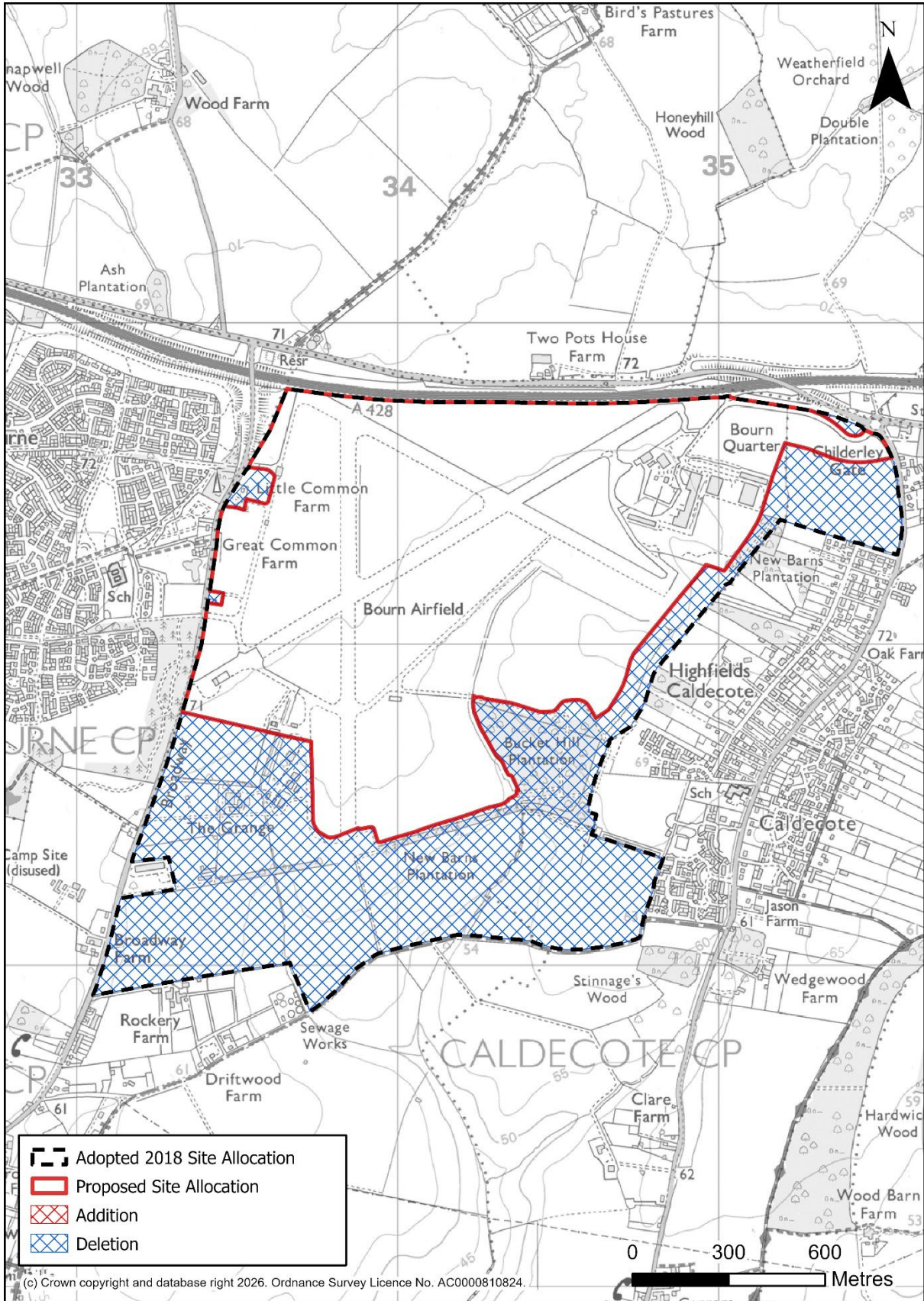
Policy S/GF: Land adjacent to A11 and A1307 at Grange Farm



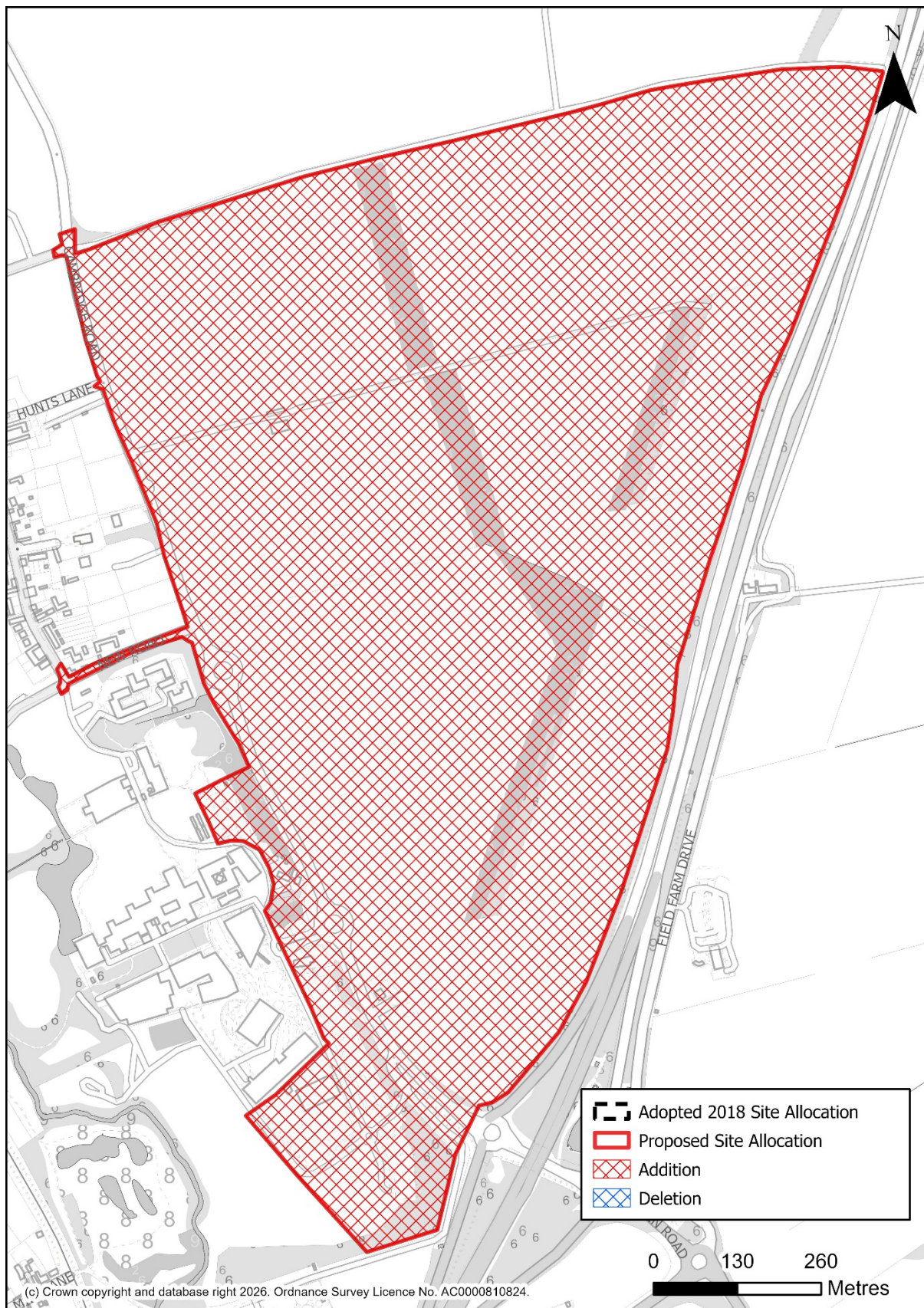
S/NS: Northstowe



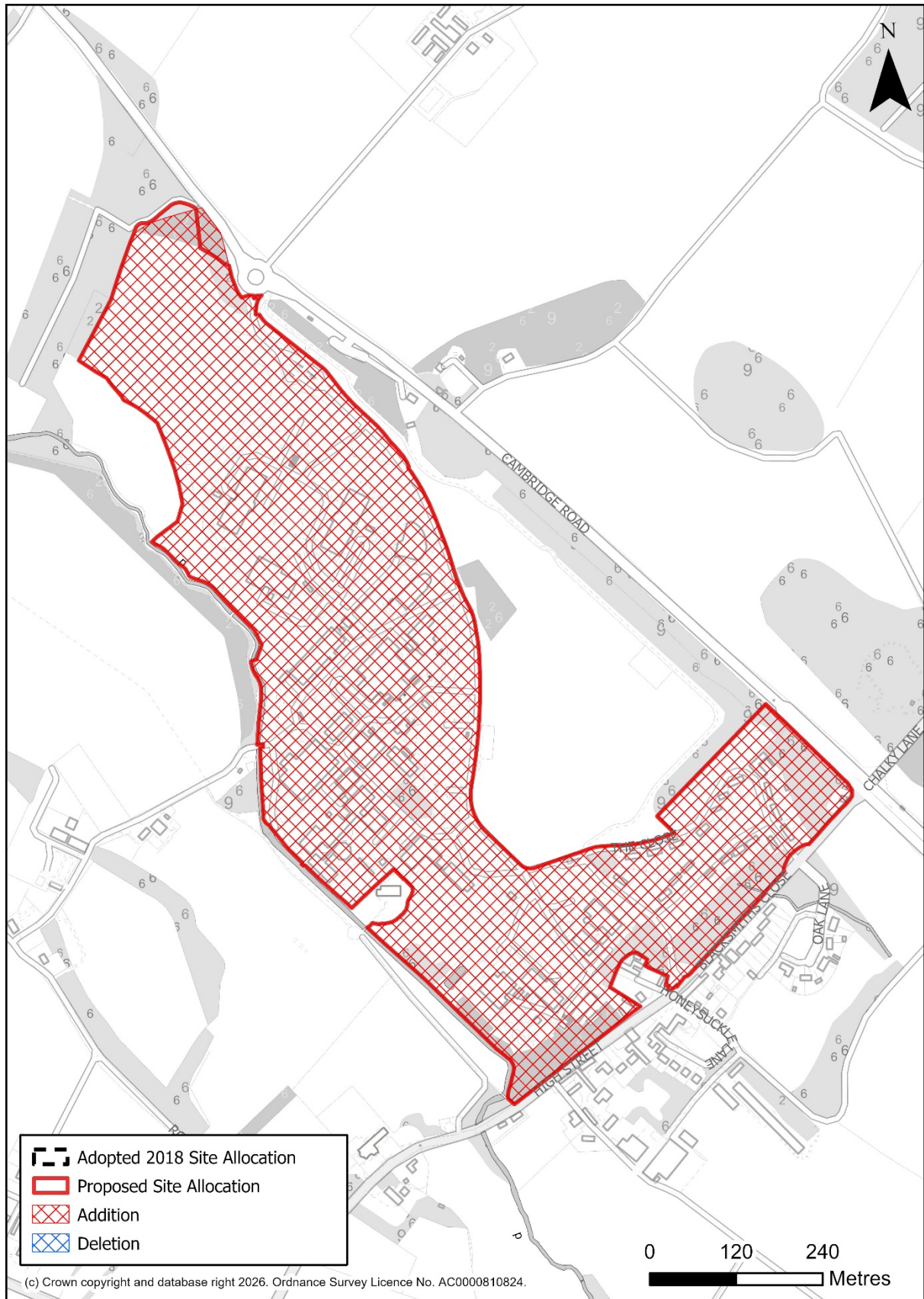
S/BA: Bourn Airfield New Village



Policy S/WGC: Wellcome Genome Campus – Expansion Land, Hinxton



Policy S/RSC/BRC: Babraham Research Campus



Policy S/RSC/FSS: Former Spicers Site, Sawston Business Park, Sawston

