

Viewpoint J1: Worts' Causeway / Shelford Road



Image Description

Top: View J1, a 90° static panorama from the historic Worts' Causeway approach to Cambridge, providing a broad perspective of the city's skyline from the west. The image is annotated to indicate key points in the city's skyline.

Key Elements and Sensitivities

- This viewpoint allows unobstructed views of the north-eastern periphery of Cambridge, featuring minimal urbanisation that interrupts the horizon. The silhouettes of trees on the city's skyline, observable from this point, serve as an illustration of Cambridge's comparatively modest visual impact amidst its predominantly rural surroundings. Moderately sensitive to Change.
- The Historic Core assumes a prominent position within the visual landscape, notably due to the imposing presence of the University Library tower and Holy Trinity Church. These structures, erupting from surrounding trees, serve as a good representation of Cambridge's distant vistas, wherein the visibility of these landmarks relies upon interruptions in the expanse of foliage.
- The view demonstrates the contrast between the city's skyline and its rural surroundings, with an absence of sprawling urban areas, particularly in the foreground of the photograph. This exemplifies the importance of the Historic Core and its relatively close-set skyline.
- The chimney of the Museum of Technology (Old Cheddar's Lane pumping station) stands prominent in the view, achieving a relatively high visual magnitude despite its distance (of approximately 5.5 km). The scale of the chimney's visual impact demonstrates the impact of industrial architecture in Cambridge. Conversely, its isolated nature on the skyline demonstrates the sparsity of industrial buildings on Cambridge's skyline survival.
- A large gap in the city's form is visible between Addenbrooke's and the University Library. This area is highly sensitive to change, as it provides a region of separation between the historic complex and the Historic Core.

Viewpoint J2: Worts' Causeway / Shelford Road

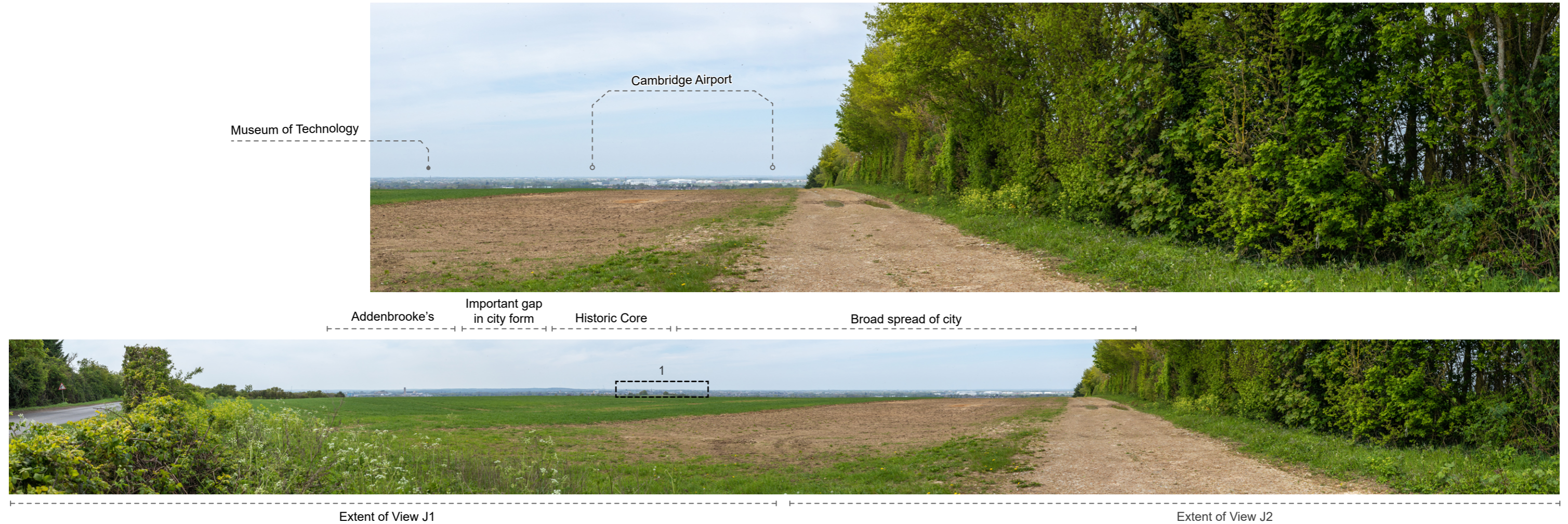


Image Description

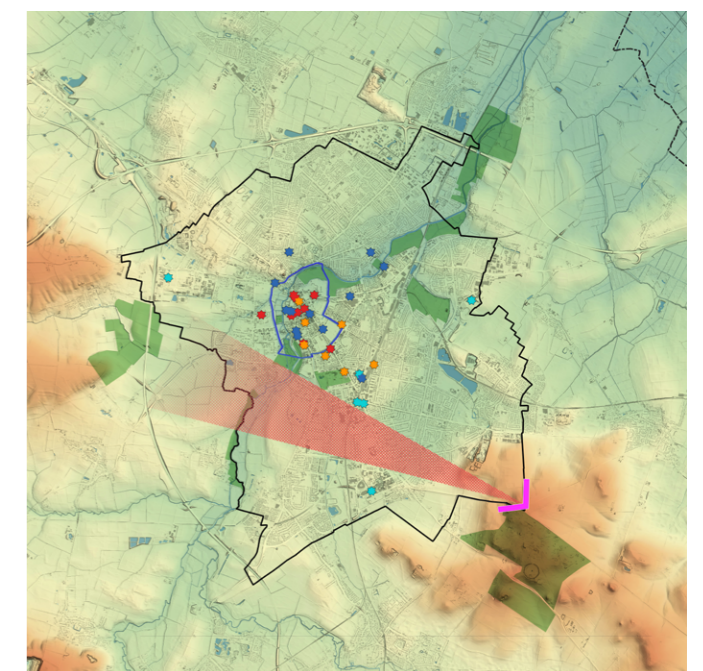
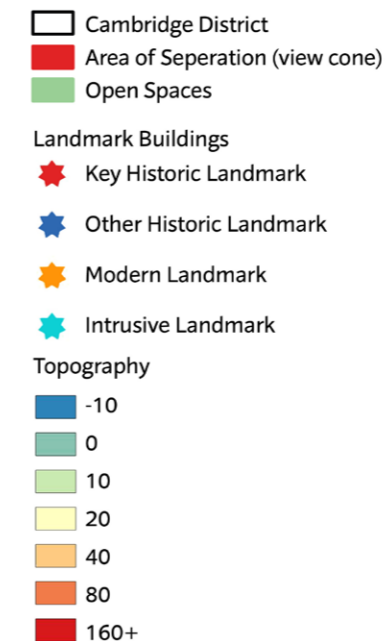
Top: View J2, a 90° static panorama from the historic Worts' Causeway approach to Cambridge, providing a broad perspective of the city's skyline from the west. The image is annotated to indicate key points in the city's skyline.

Bottom: A 180° static panorama from the same viewpoint, annotated to point out key elements within the landscape. The extent of views J1 and J2, as well as the silhouetted enlargements on the following page are annotated.

Right: A map highlighting the area of separation in relation to Cambridge, denoted by a red view cone.

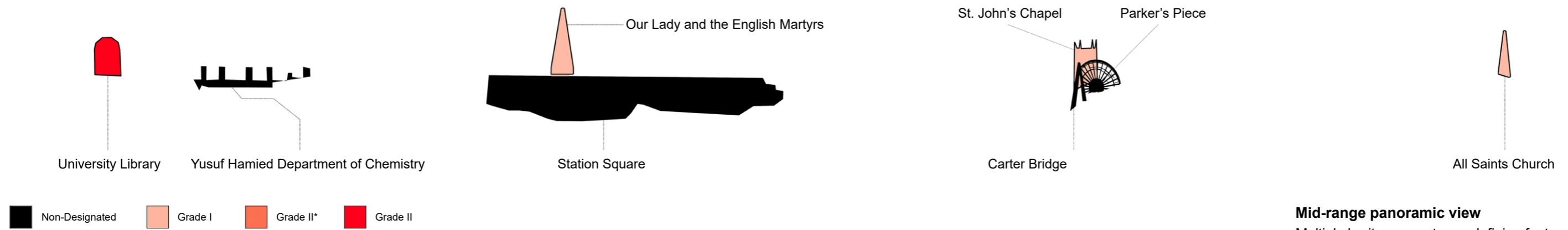
Key Elements and Sensitivities

- A heavily treed view, dominated by a track leading north into Cambridge. The views down into the city are bracketed by the Museum of Technology on the eastern edge of the Historic Core and Cambridge Airport, which stands in low profile.
- Cambridge City Airport has a relatively high visual magnitude, due largely to its lack of tree cover south of the runway. Moreover, the bright white colour of the complex's hangars is visually arresting, contrasting the comparably rural surroundings. This view is significant, as the airport marks the eastern extremity of Cambridge before it abruptly leads into rural fields.
- The right half of the image is completely obscured by the treeline, blocking the rural outskirts east of Cambridge. The significance of such obscuration should be noted, as this example exemplifies the treed landscapes typical of the region, visible here in the foreground.
- The chimney of the Museum of Technology (the Old Cheddar's Lane pumping station) is easily noticeable in the landscape. Despite standing approximately 5.5 kilometres away, it commands significant visual attention due to its size and prominence. This emphasises how industrial architecture has made a notable impact on the city's skyline. However, the chimney's solitary presence on the skyline also highlights the scarcity of industrial buildings in Cambridge's overall landscape, showcasing their limited survival in the area.



Strategic Viewpoint J

Viewpoint J: Worts' Causeway / Shelford Road



Mid-range panoramic view

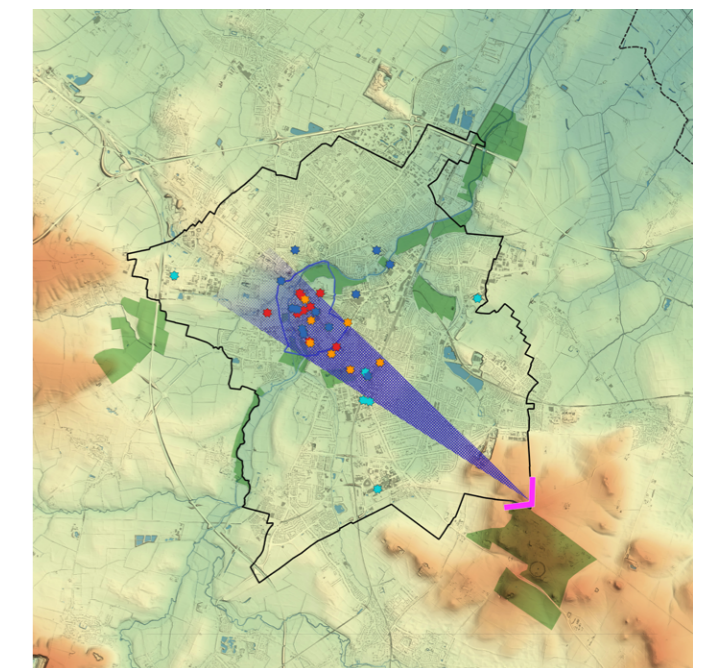
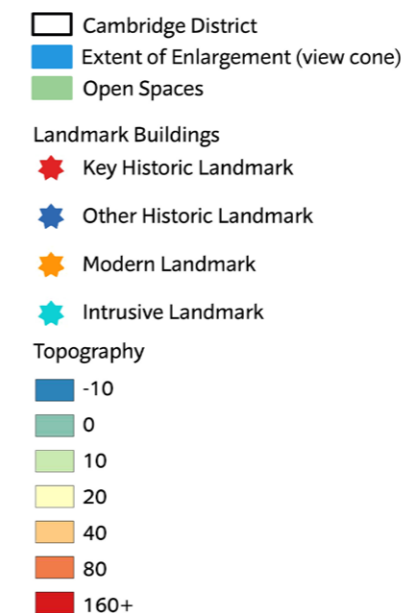
Multiple heritage assets are defining features of the central part of the skyline in this view. Separation between Addenbrooke's complex/historic core/ Cambridge East is key for legibility of the historic core.

Image Description

Top: An enlargement taken from the 180° static panorama of Viewpoint J, visualising the visual magnitude of the numerous towers within the historic core.

Right: A map showing the extent of the enlargement, denoted by a blue view cone.

See previous page for the scale of each enlargement.



Strategic Viewpoint J

Viewpoint K1: Little Wilbraham Road over A14

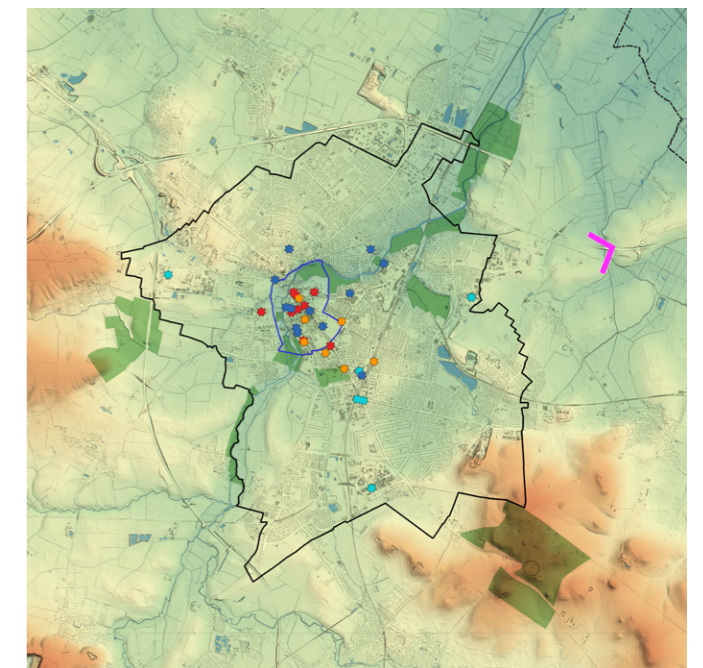
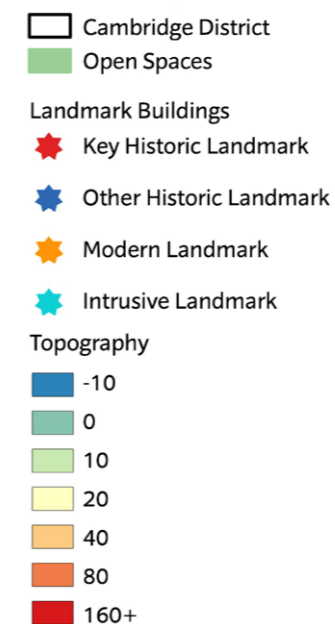


Image Description

Top: View K1, a 90° long distance view over the A14 towards Cambridge, providing a broad perspective of the city's skyline from the west. The image is annotated to indicate key points in the city's skyline.

Key Elements and Sensitivities

- A largely obscured view, dominated by trees lining the A14. The gap created by the span of the A14 permits compact views into the city, bracketed by Addenbrooke's to the south and Cambridge Airport to the north. The skyline is very subtle from this viewpoint, with few buildings contrasting against the horizon.
- Cambridge City Airport possesses a relatively high visual prominence, primarily attributed to the absence of tree coverage to the east of its runway. Additionally, the bright white hue of the airport's hangars creates a visual contrast with the predominantly rural environment. This particular vista holds significance as it demonstrates the abruptness of Cambridge's skyline, with the airport visible before rural fields.
- The spire of the Church of Our Lady and the English Martyrs is easily visible in the landscape. Despite standing approximately 5.5 kilometres away, it commands significant visual attention due to its size and prominence. This emphasises how industrial architecture has made a notable impact on the city's skyline. However, the chimney's solitary presence on the skyline also highlights the scarcity of industrial buildings in Cambridge's overall landscape, showcasing their limited survival in the area.
- The right quarter of the image is predominantly obscured by the treeline north of the A14, resulting in an obstruction of Cambridge's rural northern outskirts. This serves as an illustrative example of the treed landscapes characteristic of the region..



Strategic Viewpoint K

Viewpoint K2: Little Wilbraham Road over A14

Very long range glimpsed view

Heritage assets are not significant defining features of the skyline- few are discernible in this view e.g. Our Lady and the English Martyrs. Assets that can be identified are mostly obscured by the treeline.

Cambridge Airport



Mostly obscured foreground looking out over the rural south of Cambridge

Addenbrooke's

Gap

Historic Core

Rural midground with few built features.

Entirely obscured foreground and midground, with heavy traffic.



Extent of View K1

Extent of View K2

Image Description

Top: View K2, a 90° static panorama over the A14 towards Cambridge, providing a broad perspective of the city's skyline from the west. The image is annotated to indicate key points in the city's skyline.

Bottom: A 180° static panorama from the same point, annotated to point out key elements within the landscape.

Key Elements and Sensitivities

- A largely obscured view, dominated by trees lining the A14. The gap created by the span of the A14 permits compact views into the city, bracketed by Addenbrooke's to the south and Cambridge Airport to the north. The skyline is very subtle from this viewpoint, with few buildings contrasting against the horizon.
- Cambridge City Airport possesses a relatively high visual prominence, primarily attributed to the absence of tree coverage to the east of its runway. Additionally, the bright white hue of the airport's hangars creates a visual contrast with the predominantly rural environment. This particular vista holds significance as it demonstrates the abruptness of Cambridge's skyline, with the airport visible before rural fields.
- The spire of the Church of Our Lady and the English Martyrs is easily visible in the landscape. Despite standing approximately 5.5 kilometres away, it commands significant visual attention due to its size and prominence. This emphasises how industrial architecture has made a notable impact on the city's skyline. However, the chimney's solitary presence on the skyline also highlights the scarcity of industrial buildings in Cambridge's overall landscape, showcasing their limited survival in the area.
- The right quarter of the image is predominantly obscured by the treeline north of the A14, resulting in an obstruction of Cambridge's rural northern outskirts. This serves as an illustrative example of the treed landscapes characteristic of the region.

Note on the Long-Distance Views to and from Ely Cathedral

Long-distance views of Ely Cathedral can be experienced from elevated positions within Cambridge, notably from the tower of Great St Mary's Church and the signed viewpoint at Wandlebury Country Park. In clear weather conditions, Ely Cathedral may be perceived as a faint but distinctive landmark on the distant fenland horizon some 16 miles away. These views are not deliberately designed but have become valued elements of the wider skyline experience and contribute to local appreciation of Cambridge's relationship with its surrounding landscape. From Great St Mary's, Ely Cathedral appears as part of an expansive panorama across Cambridge's historic skyline, while from Wandlebury it is experienced across more open countryside.

Notwithstanding their incidental origin, the ability to establish this visual connection has made these locations popular viewpoints. Development proposals within Cambridge, particularly those involving taller or more visually prominent buildings in growth areas such as North East Cambridge and Cambridge East, should therefore seek to avoid unnecessary interruption, obstruction, or visual competition within these long-distance sightlines.

The view from Ely Cathedral towards Cambridge is similarly limited and depend upon the elevation afforded by the West Tower. The view is presently characterised by the visibility of the University Library Tower rising above the low-lying fen landscape with no other Historic Core elements visible. As development of the Cambridge fringes and intensification within the urban area progresses, new skyline elements should be carefully integrated so as not to erode the distinctive, dispersed profile of Cambridge when experienced from afar.