

Viewpoint H2: Redmeadow Hill

Location of Addenbrooke's Hospital



The south end of Girton West Cambridge development, largely hidden from view by dense foliage. (A) Area of Separation Historic Core The mostly rural southern extent of city.



Extent of View H1

Extent of View H2

Image Description

Top: View H2, a 90° static panorama from Redmeadow Hill, looking southeast, providing a broad perspective of the city's skyline from the west. The image is annotated to indicate key points in the city's skyline.

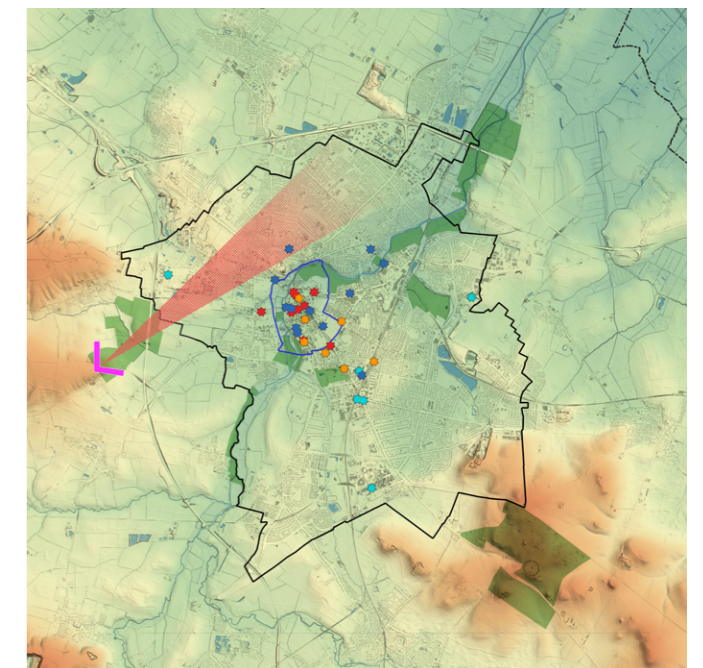
Bottom: A 180° static panorama from the same point, annotated to point out key elements within the landscape. The extent of views H1 and H2, as well as the silhouetted enlargements on the following page are annotated, 1 and 2.

Right: A map highlighting the area of separation of the viewpoint in relation to Cambridge, denoted by a red view cone.

Key Elements and Sensitivities

- This is an important panoramic view of the rural landscape south of Cambridge in its relatively undeveloped context. It is largely treed and with meadows in the foreground. The Historic Core is not visible from this angle.
- The view demonstrates the abruptness of the city's profile, giving way to immediate rurality upon its termination. Furthermore, the contiguous nature of the city, without sprawling areas of urbanisation bleeding off from it, is easy to witness from this vantage point. This further exemplifies the importance of the Historic Core, and its relatively close-set skyline. Low sensitive to change.
- The view encompasses a relatively undeveloped treed skyline; it is sensitive to change and provides an important context for the Historic Core. Addenbrooke's Hospital sits prominent in the view, but is largely separated from the core and other areas, and blocked by foliage. Low sensitivity to change.
- Large areas of the view are rural, with an elevated distant backdrop. Changes in the region's topography are clear in the background, with Cambridge sitting in a shallow valley between the backdrop and the viewpoint.
- There is a notable area of separation between developments in West Cambridge and the Historic Core (A). This falls just right of the wooded area on the left of the image. High sensitivity to change.

- ▭ Cambridge District
- Area of Separation (view cone)
- Open Spaces
- Landmark Buildings
 - ★ Key Historic Landmark
 - ★ Other Historic Landmark
 - ★ Modern Landmark
 - ★ Intrusive Landmark
- Topography
 - -10
 - 0
 - 10
 - 20
 - 40
 - 80
 - 160+

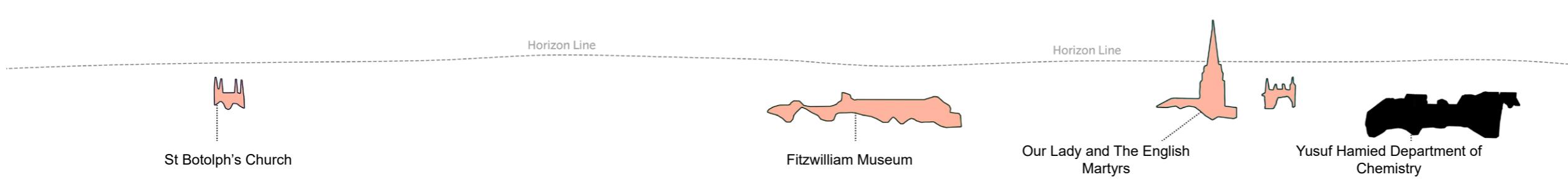
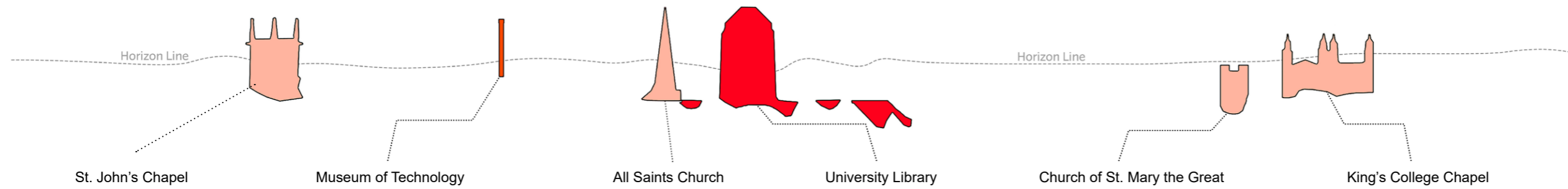


Strategic Viewpoint H

Viewpoint H: Redmeadow Hill



Long range panoramic view
Multiple heritage assets are defining features of the skyline in this view, including legible compact historic core.



- Non-Designated
- Grade I
- Grade II
- Scheduled Monument

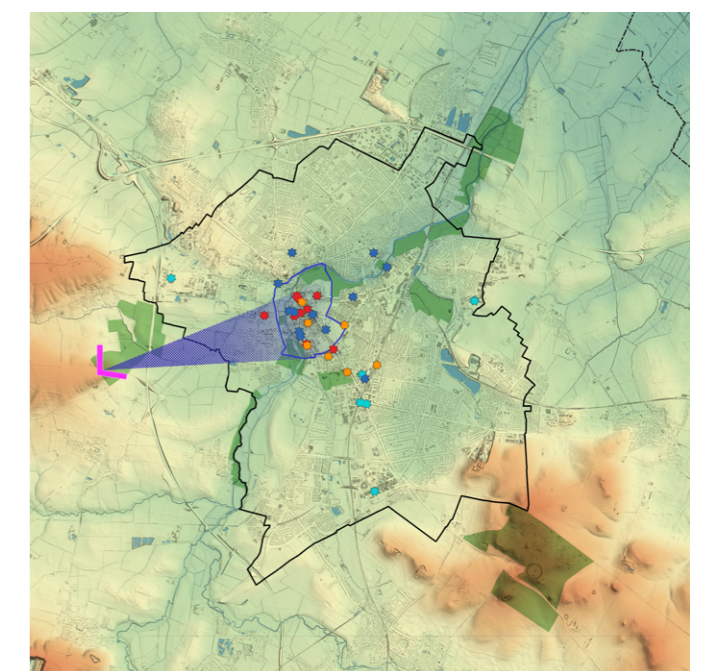
Image Description

Top: Two enlargements of view H, centred on the historic core, visualising the visual magnitude of the numerous towers within the historic core.

Right: A map showing the extent of the enlargement, denoted by a blue view cone.

See previous page for the scale of each enlargement.

- Cambridge District
- Extent of Enlargement (view cone)
- Open Spaces
- Landmark Buildings**
- Key Historic Landmark
- Other Historic Landmark
- Modern Landmark
- Intrusive Landmark
- Topography**
- 10
- 0
- 10
- 20
- 40
- 80
- 160+



Strategic Viewpoint H

Viewpoint I1: Shelford Road below Limepit Hill

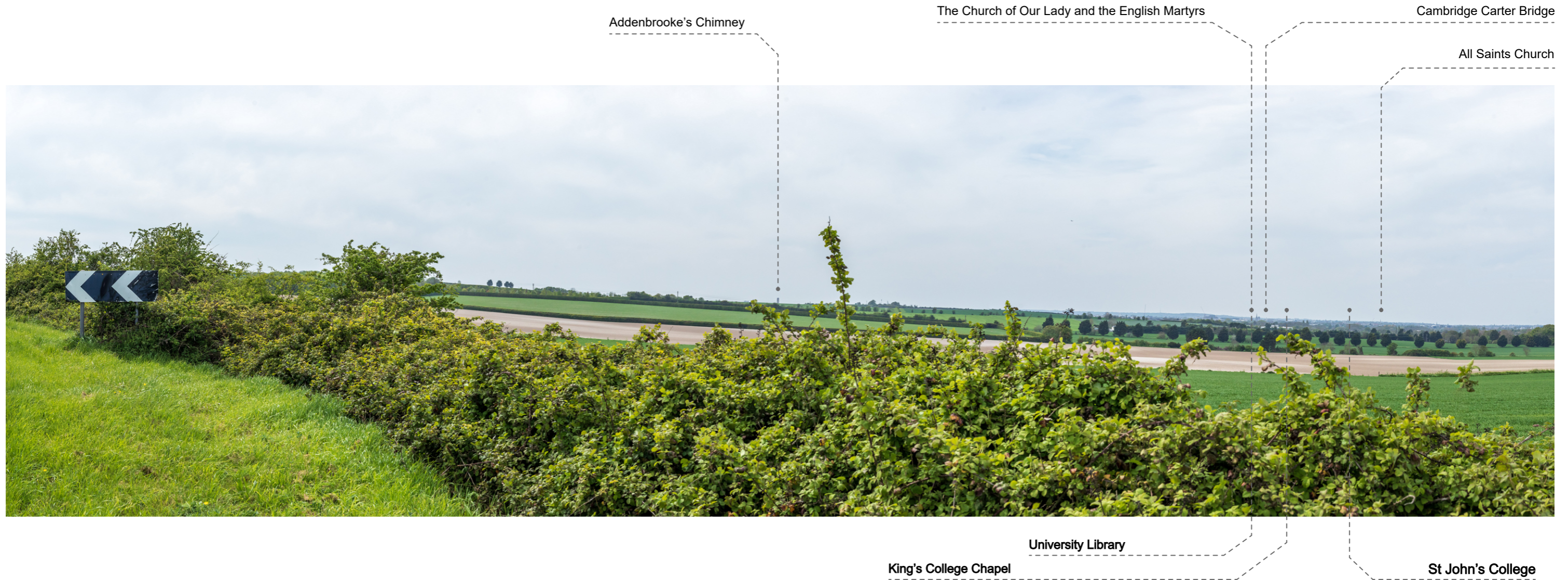


Image Description

Top: View I1, A 90° static panorama from a roadside viewpoint over Cambridge, providing a broad perspective of the city's skyline from the west. The image is annotated to indicate key points in the city's skyline.

Key Elements and Sensitivities

- From this vantage point, the visibility of Cambridge's southern areas is mostly obstructed, and only glimpses of the Historic Core can be seen on the horizon. The gentle tree-lined silhouette of the city that can be observed from here showcases how Cambridge's visual impact is relatively modest compared to its predominantly rural surroundings.
- A clear distinction between the city's densely packed buildings and the surrounding rural landscape is observable. Notably, the absence of extensive urban sprawl, especially in the foreground of the image, accentuates the condensed design of Cambridge's urban area. Moderately sensitive to change.
- The chimney of the main building at Addenbrooke's Hospital stands out prominently in the landscape, commanding attention. It is especially noticeable as it emerges from the surrounding trees, representing a typical distant view of Cambridge; the visibility of the chimney and views of the city relying on openings in the tree cover. Low sensitivity to change.
- The spire of The Church of Our Lady and the English Martyrs stands prominently in the picture, obtaining a rather high visual magnitude despite its distance (of approximately 5.5 km).
- There is a notable gap in the city's form, between Addenbrooke's and The Church of Our Lady and the English Martyrs. Moderately sensitive to change.

Viewpoint I2: Shelford Road below Limepit Hill

Museum of Technology

Fulbourn Hospital

Cambridge Airport



Addenbrooke's

Notable gap in the city's form

Long distant views of city

Teversham and mostly rural eastern outskirts of Cambridge.



Extent of View I1

Extent of View I2

Image Description

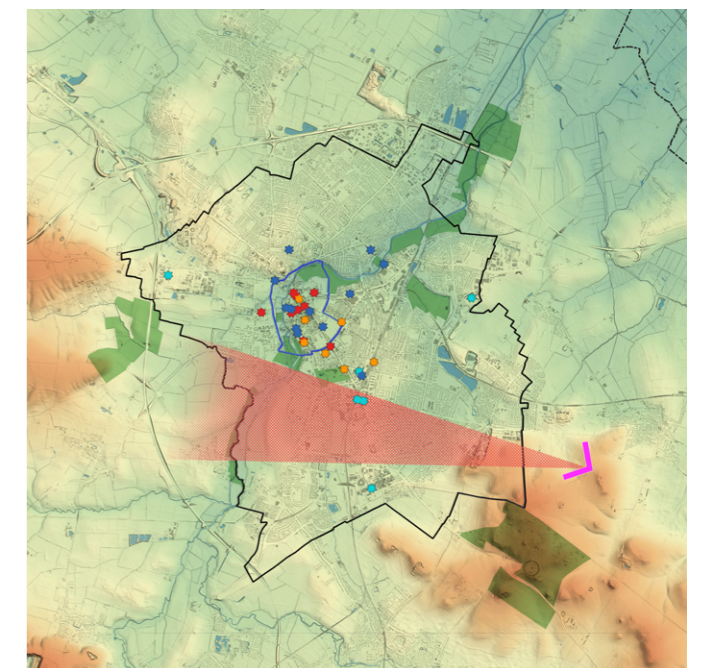
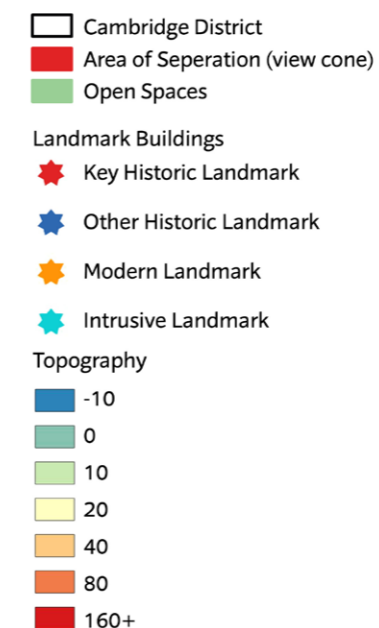
Top: View I2, a 90° static panorama from a roadside viewpoint over Cambridge, providing a broad perspective of the city's skyline from the west. The image is annotated to indicate key points in the city's skyline.

Bottom: A 180° static panorama from the same point, annotated to point out key elements within the landscape. The extent of views I1 and I2, as well as the silhouetted enlargements on the following page are annotated, 1 and 2.

Right: A map highlighting the area of separation in relation to Cambridge, denoted by a red view cone.

Key Elements and Sensitivities

- From this perspective, there is a visible contrast between the city's skyline and the city's rural surroundings. There is a notable absence of sprawling urban areas, particularly in the foreground of the photograph. This emphasises the compact nature of Cambridge's urban layout.
- The viewpoint allows mostly obscured views over Cambridge's north-eastern extremities, with limited development breaking the skyline. The subtle treed skyline of the city observable from this point exemplifies Cambridge's relatively low visual magnitude within the otherwise rural landscape.
- The historic sections of Fulbourn Hospital buildings are very prominent in view, particularly the tower of Victoria House. The way in which these buildings erupt from the otherwise treed skyline epitomises distant views of Cambridge, with views dependent on breaks in the foliage. Highly sensitive to change.
- The scheduled chimney of the Museum of Technology (Old Cheddar's Lane pumping station) stands isolated and prominent in the view, achieving a relatively high visual magnitude despite its distance (of approximately 5.5 km). The scale of the chimney's visual impact demonstrates the impact of industrial architecture on Cambridge. Conversely, its isolated nature on the skyline demonstrates the sparsity of industrial buildings on Cambridge's skyline survival. Highly sensitive to change.



Strategic Viewpoint I2

Viewpoint I: Shelford Road below Limepit Hill



Non-Designated
 Grade I
 Grade II*
 Grade II

Very long range panoramic view

Heritage assets are not significant defining features of the skyline- Our Lady and the English Martyrs is prominent. However, compact historic core is somewhat legible.

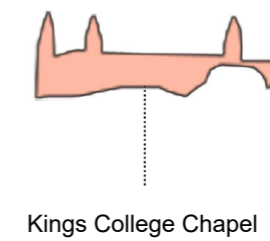
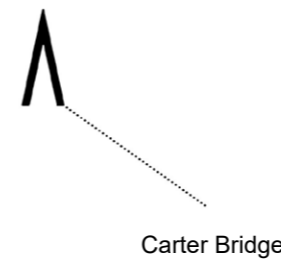
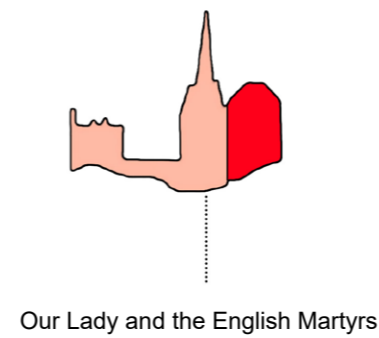
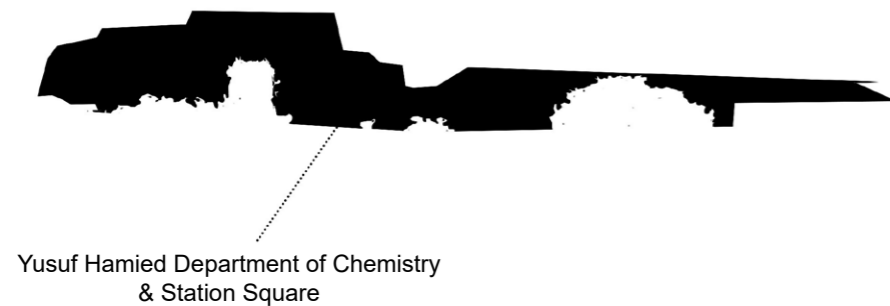


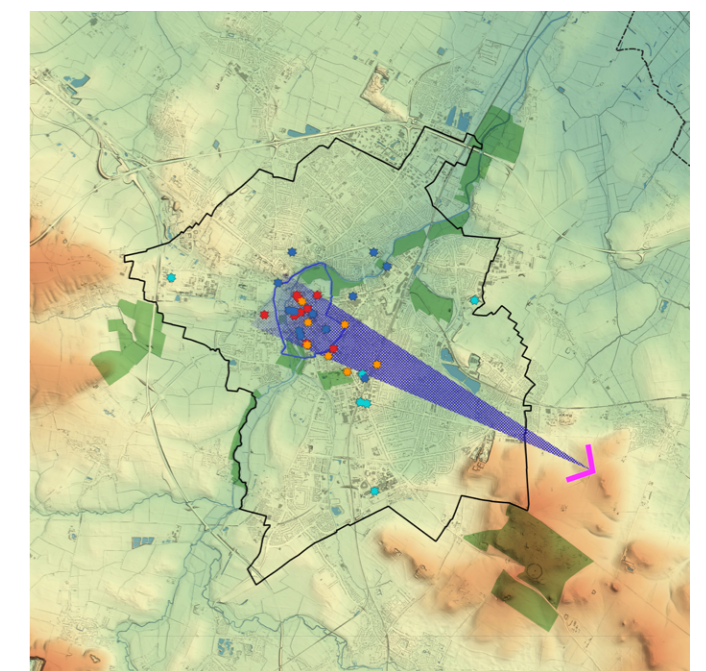
Image Description

Top: An enlargement taken from the 180° static panorama of Viewpoint I, visualising the visual magnitude of the numerous towers within the historic core.

Right: A map showing the extent of the enlargement, denoted by a blue view cone.

See previous page for the scale of each enlargement.

- Cambridge District
- Extent of Enlargement (view cone)
- Open Spaces
- Landmark Buildings**
- Key Historic Landmark
- Other Historic Landmark
- Modern Landmark
- Intrusive Landmark
- Topography**
- 10
- 0
- 10
- 20
- 40
- 80
- 160+



Strategic Viewpoint I