

Viewpoint E1: Limekiln Road

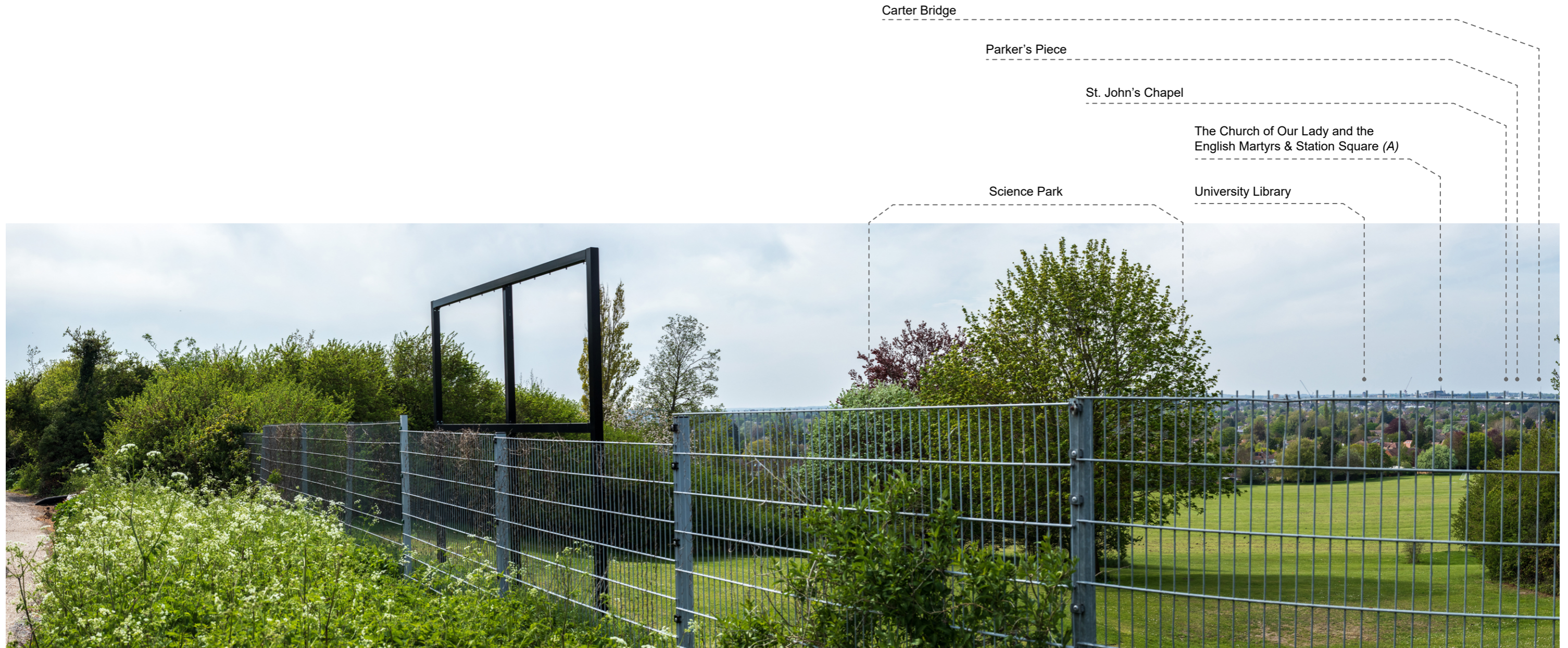


Image Description

Top: View E1, a 90° static panorama from a lay-by just off Limekiln Road, overlooking the grounds of Netherall School. The image is annotated to indicate key points in the city's skyline.

Key Elements and Sensitivities

- The viewpoint sits in a lay-by off Limekiln Road, to the southeast of Cambridge. The fence in the immediate foreground, as well as the majority of the midground and its treed areas, belong to the school yard of Netherall School. The fence, in particular, blocks significant portions of the view.
- The Historic Core features prominently in parts of the view, with key elements breaking the skyline. The Cambridge University Library is prominent, breaking the skyline in relative isolation. To the right of this, a dense collection of buildings is visible. This includes St. John's Chapel, the Parker's Piece Ferris wheel, Carter Bridge, and The Church of Our Lady and the English Martyrs. The Church of Our Lady and the English Martyrs is the tallest of the collection. The background of this regions is highly sensitive to change.
- Station Square, with its collection of large hotels (the broad side of the Ibis Hotel in particular, {A}), is highly conspicuous in the view, blocking significant portions of the Historic Core.
- The majority of the skyline is largely wooded, often with a distant rural backdrop. The foreground, in particular, is heavily treed. The foreground trees do frame the Historic Core to an extent while blocking the Science Park to the west. This area is moderately sensitive to change.

Viewpoint E2: Limekiln Road

Long range panoramic view

Heritage assets are not defining features of the skyline- few are discernible in this view and those that can be identified are mostly obscured by the treeline.



Large-scale modern development largely hidden by treed foreground

Historic Core

Heavily treed foreground



Extent of View E1

Extent of View E2

Image Description

Top: View E2, a 90° static panorama from a lay-by just off Limekiln Road, overlooking the grounds of Netherall School. The image is annotated to indicate key points in the city's skyline.

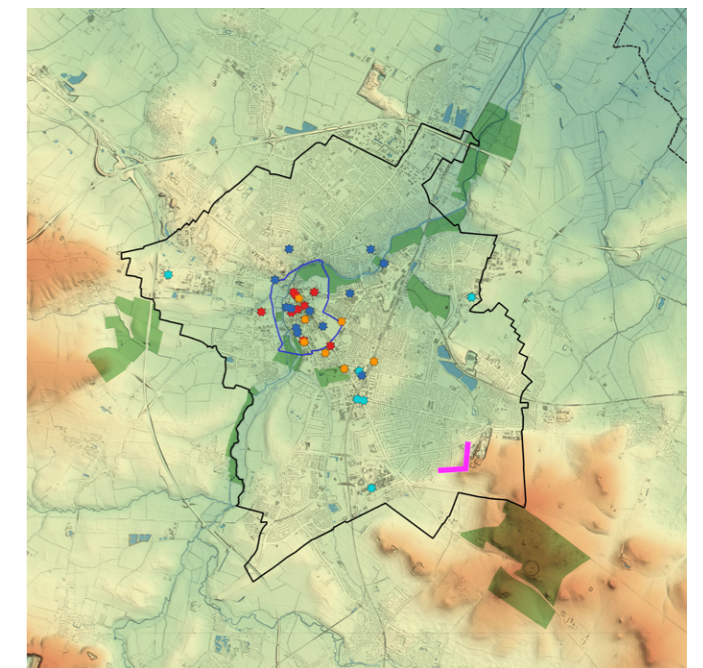
Bottom: A 180° static panorama from the same viewpoint, annotated to point out key elements within the landscape. The extent of views E1 and E2, as well as the silhouetted enlargement on the following page are annotated.

Right: A map highlighting the position of the viewpoint in relation to Cambridge.

Key Elements and Sensitivities

- View E2 is almost entirely blocked by foreground foliage.

- Cambridge District
- Open Spaces
- Landmark Buildings**
- Key Historic Landmark
- Other Historic Landmark
- Modern Landmark
- Intrusive Landmark
- Topography**
- 10
- 0
- 10
- 20
- 40
- 80
- 160+



Strategic Viewpoint E

Viewpoint E: Limekiln Road

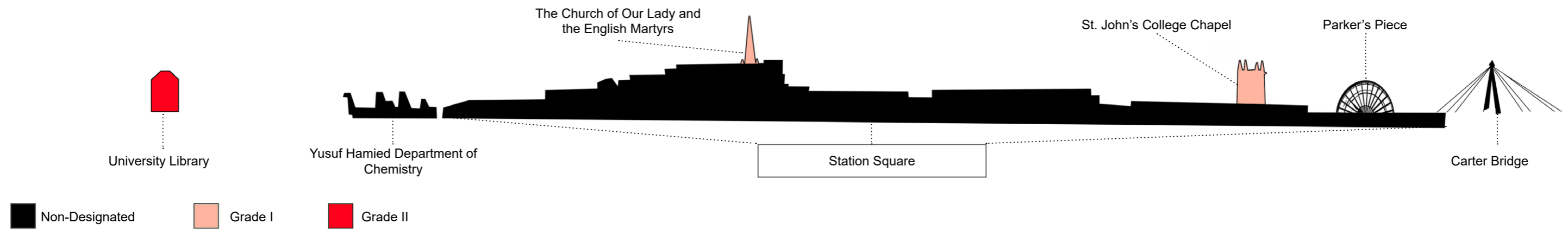
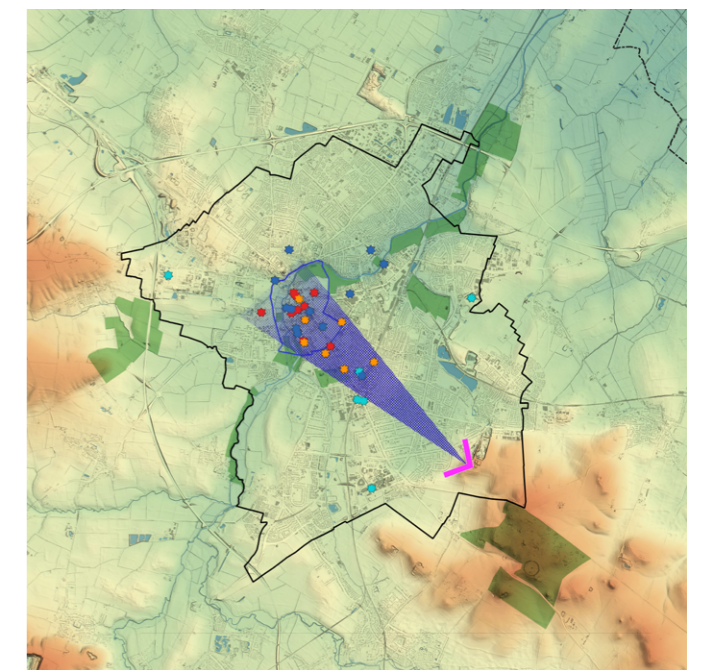
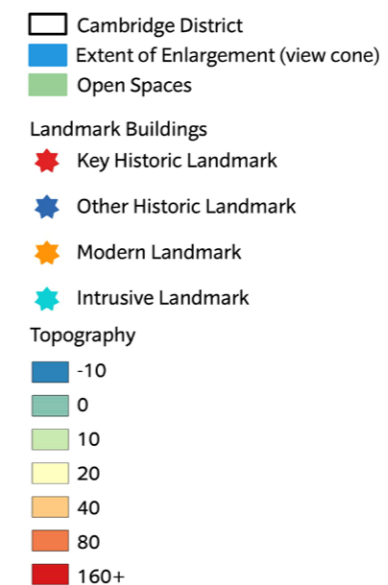


Image Description

Bottom: An enlargement of viewpoint E, centred on the historic core, visualising the visual magnitude of the numerous towers within the historic core.

Right: A map highlighting the position of the enlargement in relation to Cambridge, denoted by a blue view cone.

See previous page for the scale of each enlargement.



Strategic Viewpoint E

Viewpoint F1: Little Trees Hill, Magog Down



Image Description

Top: View F1, a 90° static panorama from Little Trees Hill, providing a broad perspective of the Cambridge's city skyline from a footpath on Magog Down. The image is annotated to indicate key points in the city's skyline.

Key Elements and Sensitivities

- An important panoramic view of Cambridge in its rural context and setting, with meadows visible in the foreground. The tower of the University Library and the chimney of Addenbrooke's Hospital contrast conspicuously against the horizon. Modern developments, such as the Triangle Buildings, have a relatively high visual magnitude.
- The spread of trees obscures a significant portion of Cambridge's urban landscape. Nonetheless, the foliage frames clear views of the city, notably the area between Addenbrooke's and the Museum of Technology. Thus, this view holds great significance as it offers an elevated perspectives of the historic core, framed between two conspicuous buildings. It is highly susceptible to alterations.
- The historic core is small in the view, while modern developments in South Cambridge are dominant. This observance is clear when observing the University Library Tower, which appears comparably small to the Triangle Building that stands to the immediate right. King's College Chapel, too, is largely dwarfed by Yusuf Hamied Department of Chemistry Building in its foreground.
- The presence of the Addenbrooke's complex draws attention, yet it stands distinct from the historical core. This distinction is emphasised by the Cambridge University Library Tower, marking the core's western boundary. The complex itself is low sensitivity, albeit within certain limitations.
- The backdrop surrounding Cambridge is largely rural, helping to blend the city into the wider landscape. It possesses a moderate sensitivity to change, especially when it comes to larger-scale development.
- The foreground is dominated by the Magog Down Hills, a rolling landscape with treed meadows.