

## Viewpoint C2: Coton Road

Heritage assets are not defining features of the skyline- few are discernible in this view and those that can be identified are mostly obscured by the treeline.

Museum of Technology

King's College Chapel

Church of Our Lady and the English Martyrs



Mostly obscured by foliage lining Coton Road

Modern developments

Institute for Manufacturing

Historic Core

Distant treed skyline, largely obscuring central Cambridge

Largely treed skyline with limited development

Mostly obscured by foliage lining Coton Road



Extent of View C 1

Extent of View C2

### Image Description

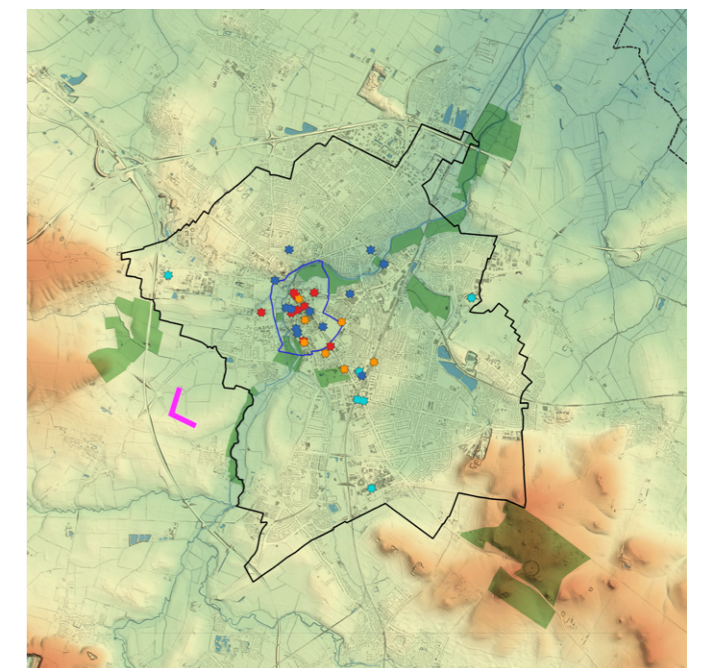
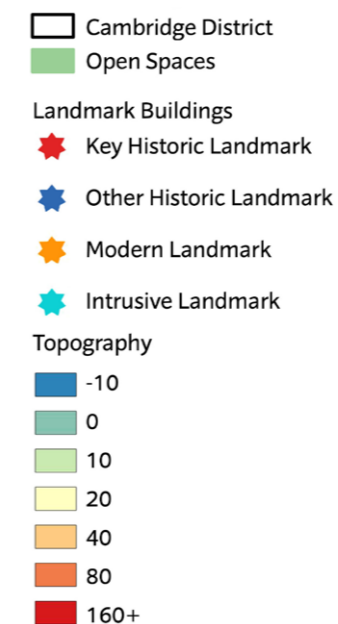
**Top:** View C2, a 90° static panorama taken from the northern side of Coton Road. The image is annotated to indicate key points in the city's skyline.

**Bottom:** A 180° static panorama from the same viewpoint, annotated to point out the extent of view C1 and C2.

**Right:** A map highlighting the position of the viewpoint in relation to Cambridge.

### Key Elements and Sensitivities

- Views of the historic centre can be seen over the distant treeline to the east, particularly to the left of the photograph. On the horizon, the Museum of Technology Chimney and King's College Chapel may be seen, as can other scattered modern developments in South Cambridge across Grantchester Meadows. Highly sensitive backdrop to these views.
- The skyline is disrupted across much of western Cambridge, with tree cover obscuring much of Cambridge and related construction. Moderately sensitive to isolated developments that deviate from the skyline.
- The photograph emphasises the importance of the King's College Chapel, which has a commanding visual presence to the east. The interplay between its towers and its blocking greenery is visible, showing the connection between Cambridge's urban core and its more rural surrounds.
- The view is mostly rural, with a slightly elevated distant backdrop. The area is less sensitive to new development, but tall structures could dominate due to the flat topography.



Strategic Viewpoint C

## Viewpoint D1: Grantchester Road



## Image Description

**Top:** View D1, a 90° static panorama from Grantchester Road, providing a broad perspective of the city's skyline from a roadside southeast of Cambridge. The image is annotated to indicate key points in the city's skyline.

## Key Elements and Sensitivities

- This mostly rural view looks east, over the M11. Heavy traffic along this road is a major experiential component of the landscape, with large trucks blocking elements of the rural midground west of Cambridge. Elements of the historic core are visible above the treed skyline, though several trees in the near midground block large portions of the view. The background to these views, and the foreground permitting, are highly sensitive to change.
- Distant views of St. Luke's Church are visible from here, framed between dips in the trees. This is a rare view, as the spire of St. Luke's is often blocked by midground elements within the city. The same is also true of Holy Trinity Church, which sits relatively inconspicuously behind the treed midground on the far right side of the image. Highly sensitive to change.
- The Cambridge University Library is among the only non-religious buildings on the skyline. The tower, as well as the visible spire of St. John's Chapel, are commonly observed from the western outskirts of Cambridge, suggesting they are among the most visually magnitudinous buildings from that angle. The views of the building are moderately sensitive to change.
- Certain regions of the predominantly undisturbed tree-lined horizon exhibit a moderate degree of sensitivity to isolated developments disrupting the continuity of the skyline. Conversely, there are other areas characterised by a predominantly rural environment. The left portion of the image is predominantly concealed by a midground dominated by trees, which in turn reveals only a rural landscape beyond. Such areas are less sensitive to change.
- Elements of the Science Park interrupt the treed midground. These buildings are prominent, largely due to the contrast between their bright, warm hues and the blue sky behind them.

## Viewpoint D2: Grantchester Road

The Church of Our Lady and the English Martyrs

King's College Chapel



Rural treed skyline

Modern developments /  
Science Park

Treed skyline with limited development.

Historic  
Core

Treed skyline with limited development.



Extent of View D1

Extent of View D2

### Image Description

**Top:** View D2, a 90° static panorama from Grantchester Road, providing a broad perspective of the city's skyline from a roadside southeast of Cambridge. The image is annotated to indicate key points in the city's skyline.

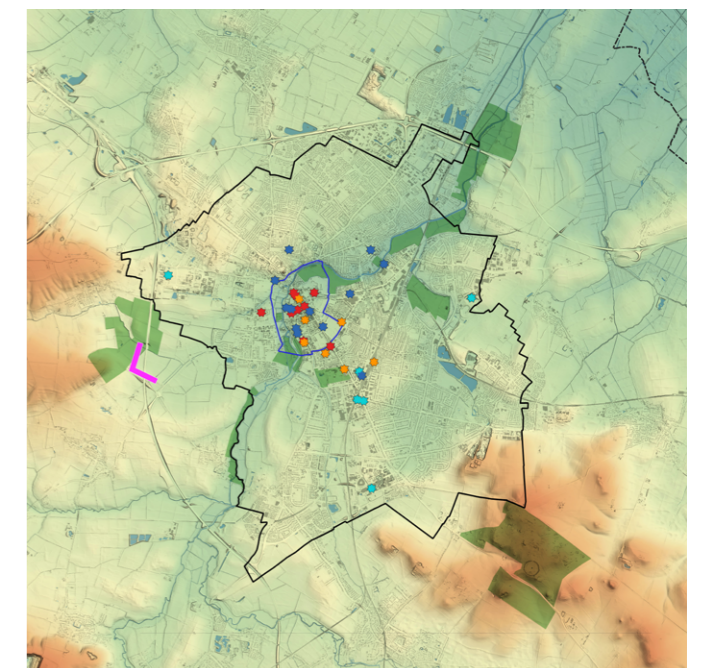
**Bottom:** A 180° static panorama from the same viewpoint, annotated to point out key elements within the landscape. The extent of views D1 and D2, as well as the silhouetted enlargements on the previous page, are annotated.

**Right:** A map highlighting the position of the viewpoint in relation to Cambridge.

### Key Elements and Sensitivities

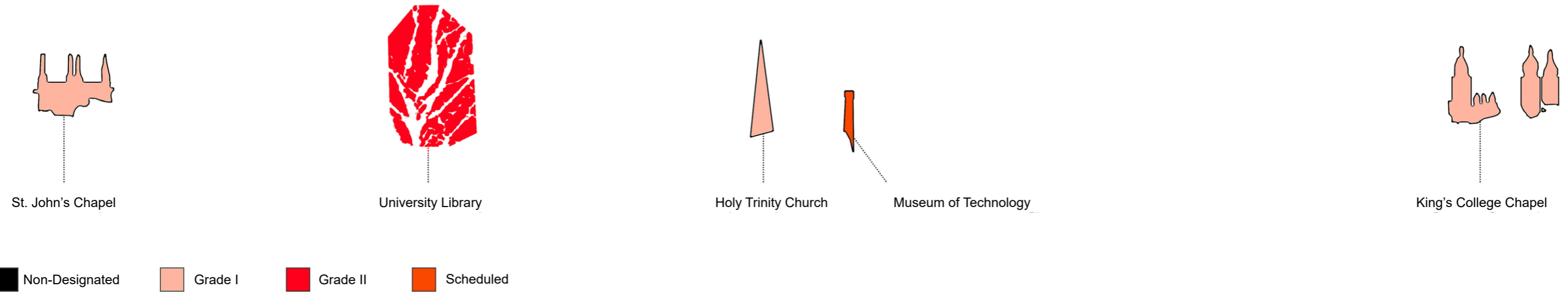
- This mostly rural view looks east, over the M11. Heavy traffic along this road is a major experiential component of the landscape, with large trucks blocking elements of the rural midground west of Cambridge. Elements of the historic core are visible above the treed skyline, though several trees in the near midground block large portions of the view. The background to these views, and the foreground permitting, are highly sensitive to change.
- The spire of the Church of Our Lady and the English Martyrs is the only church to break the skyline. However, this is mostly hidden from view behind midground trees. The spire, as well as the tower of the University Library, are commonly observed from the western outskirts of Cambridge, suggesting they are among the most visually magnitudinous buildings from that angle. View of the building are moderately sensitive to change.
- Minor distant views of King's College Chapel are visible from here, framed between dips in the trees. Given the low visual magnitude of the feature, heavy traffic would significantly disrupt views. Moderate sensitivity.

- ▭ Cambridge District
- ▭ Open Spaces
- Landmark Buildings
  - ★ Key Historic Landmark
  - ★ Other Historic Landmark
  - ★ Modern Landmark
  - ★ Intrusive Landmark
- Topography
  - 10
  - 0
  - 10
  - 20
  - 40
  - 80
  - 160+



Strategic Viewpoint D

## Viewpoint D: Grantchester Road

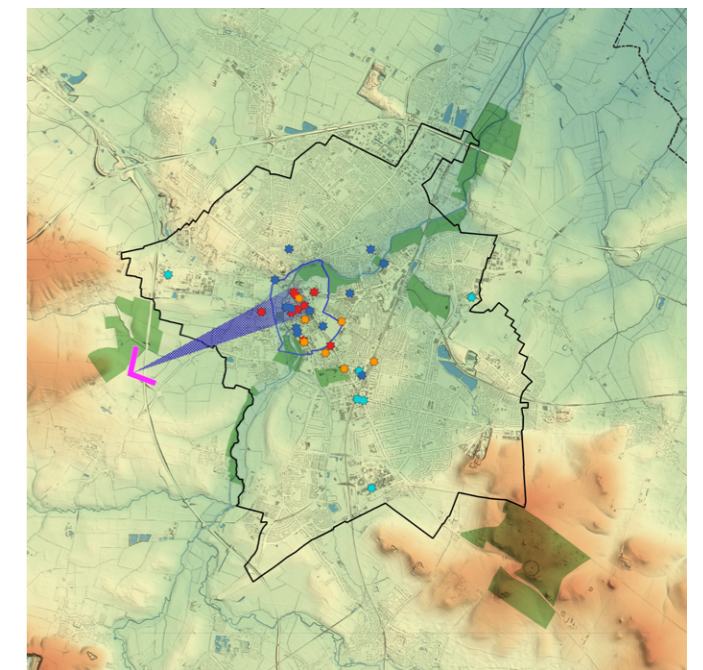
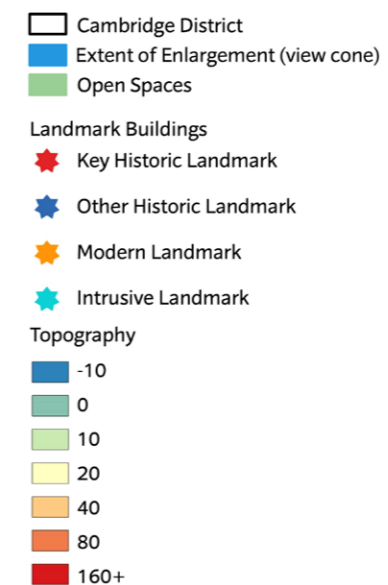


### Image Description

**Top:** A map highlighting the position of the enlargement in relation to Cambridge, denoted by a blue view cone. An enlargement of viewpoint D, centred on the historic core, visualising the visual magnitude of the numerous towers within the historic core.

**Right:** A map highlighting the position of the enlargement in relation to Cambridge, denoted by a blue view cone.

See previous page for the scale of each enlargement.



Strategic Viewpoint D