

Viewpoint B1: Coton Footpath over the M11

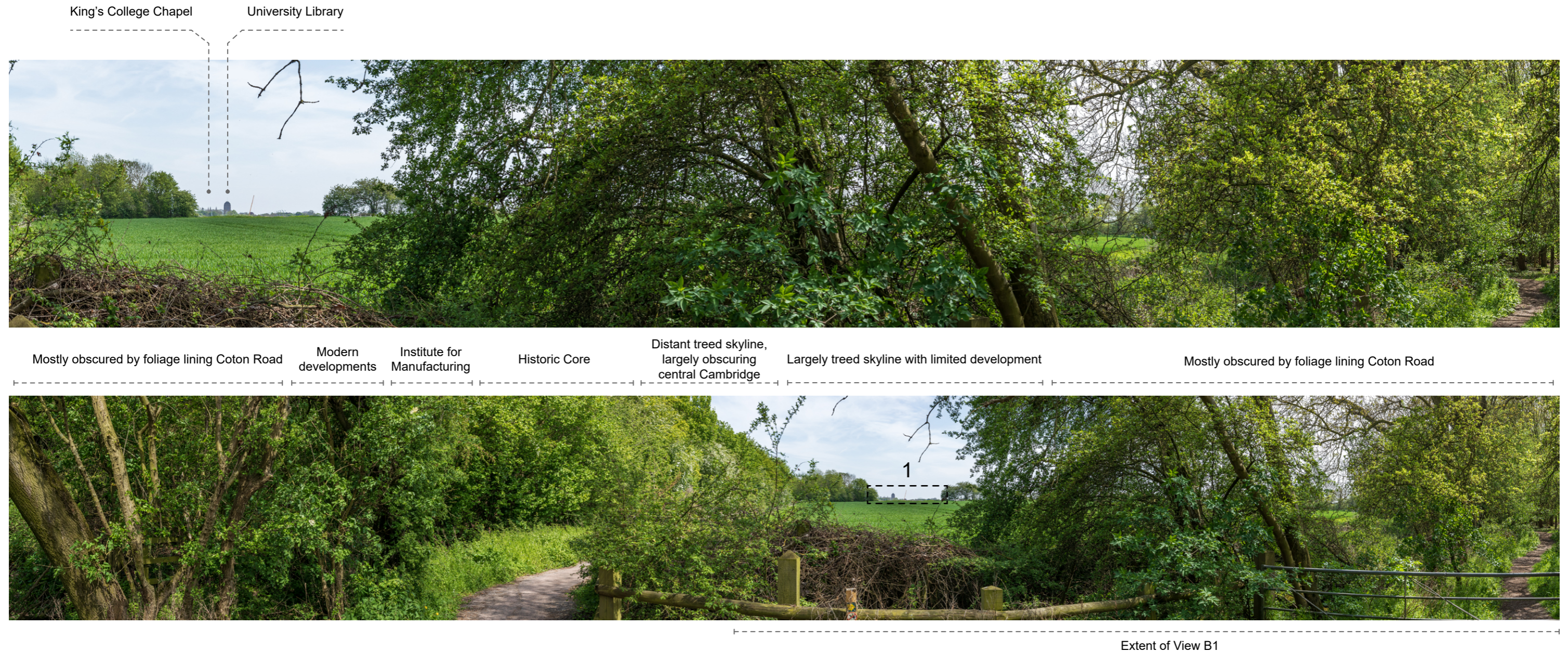


Image Description

Top: View B1, a 90° view from the east side of the M11, where the footpath breaks from woodland cover. The image is annotated to indicate key points in the city's skyline.

Bottom: A 180° static panorama from the viewpoint B1, annotated to point out the extent of view B1, as well as the silhouetted enlargement .

Key Elements and Sensitivities

- A view from the footpath between the Science Park and the M11, south of the footbridge identified in the 2018 Local Plan. The footbridge is now obscured by motorway screening planting, which has been captured in view B2.
- There are limited views of the Cambridge University Library Tower, and, to a lesser extent, Kings College Chapel. The view showcases a largely obscured rural expanse, characterised by an agricultural landscape and undulating terrain. This middleground scenery exhibits a prevalence of open fields, delineated by lines of trees and wooden fences. The absence of significant human-made structures within the view, save for the towers of King's College Chapel and University Library, accentuates the rural essence of the view. These towers serve as focal points within the landscape, emerging well-framed from the background between the foliage.
- Given the levels of obscuration present from this viewpoint, it is of limited value and has a relatively low sensitivity. Additionally, as the visual magnitude of the foliage in view remains large throughout the year, obscuring the midground, the view's limited value remains the same year-round.

Viewpoint B2: Coton Footpath over the M11














The Church of Our Lady and the English Martyrs

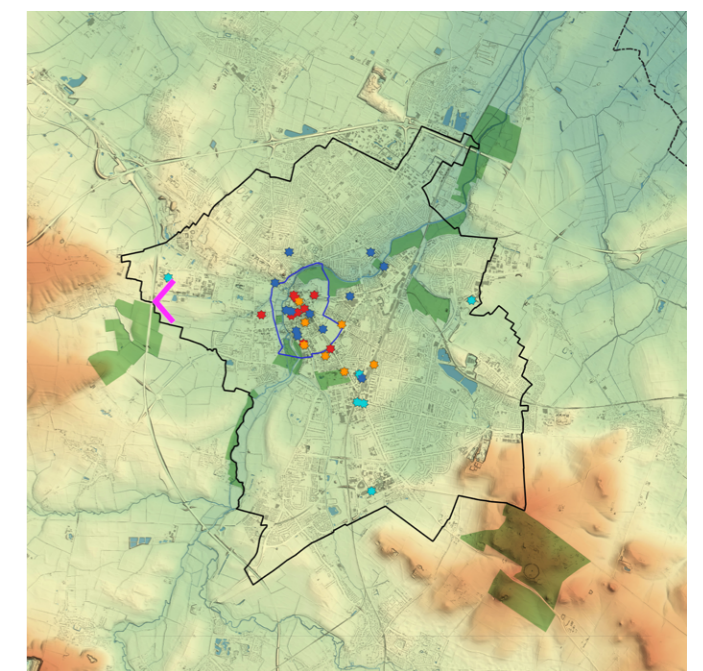


Image Description

Top: View B2, a cropped hand-held photograph from further down the footpath (542096 , 258663), towards Cambridge Science Park. Heading this direction allows for a view of the spire of the Church of Our Lady and the English Martyrs.

Bottom: A view 180° static panorama from the bridge over the M11.

-  Cambridge District
-  Open Spaces
- Landmark Buildings**
-  Key Historic Landmark
-  Other Historic Landmark
-  Modern Landmark
-  Intrusive Landmark
- Topography**
-  -10
-  0
-  10
-  20
-  40
-  80
-  160+



Strategic Viewpoint B

Viewpoint B2: Coton Footpath over the M11

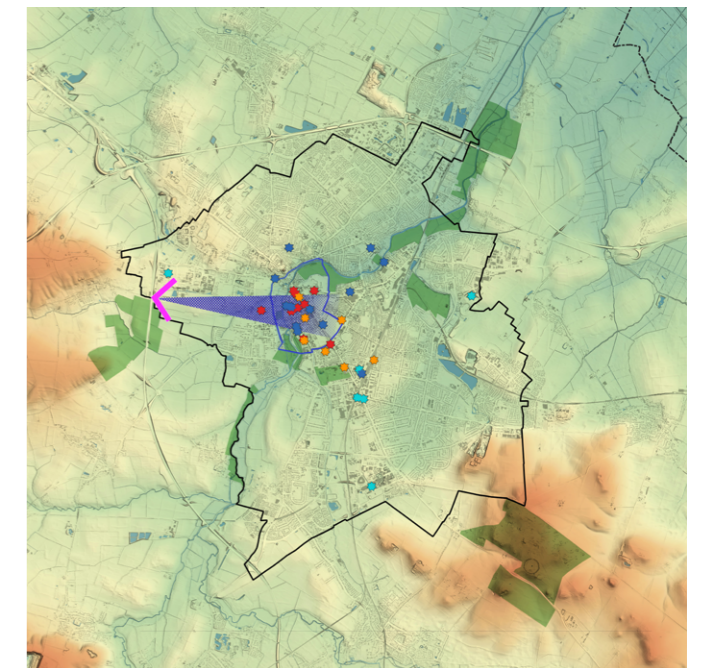


Image Description

Top: An enlargement of view B1, visualising the visual magnitude of the numerous towers visible from viewpoint B1.

Right: A map highlighting the position of the enlargement in relation to Cambridge, denoted by a blue view cone.

- Cambridge District
- Extent of Enlargement (view c)
- Open Spaces
- Landmark Buildings
 - Key Historic Landmark
 - Other Historic Landmark
 - Modern Landmark
 - Intrusive Landmark
- Topography
 - 10
 - 0
 - 10
 - 20
 - 40
 - 80
 - 160+



Strategic Viewpoint B

Viewpoint C1: Coton Road

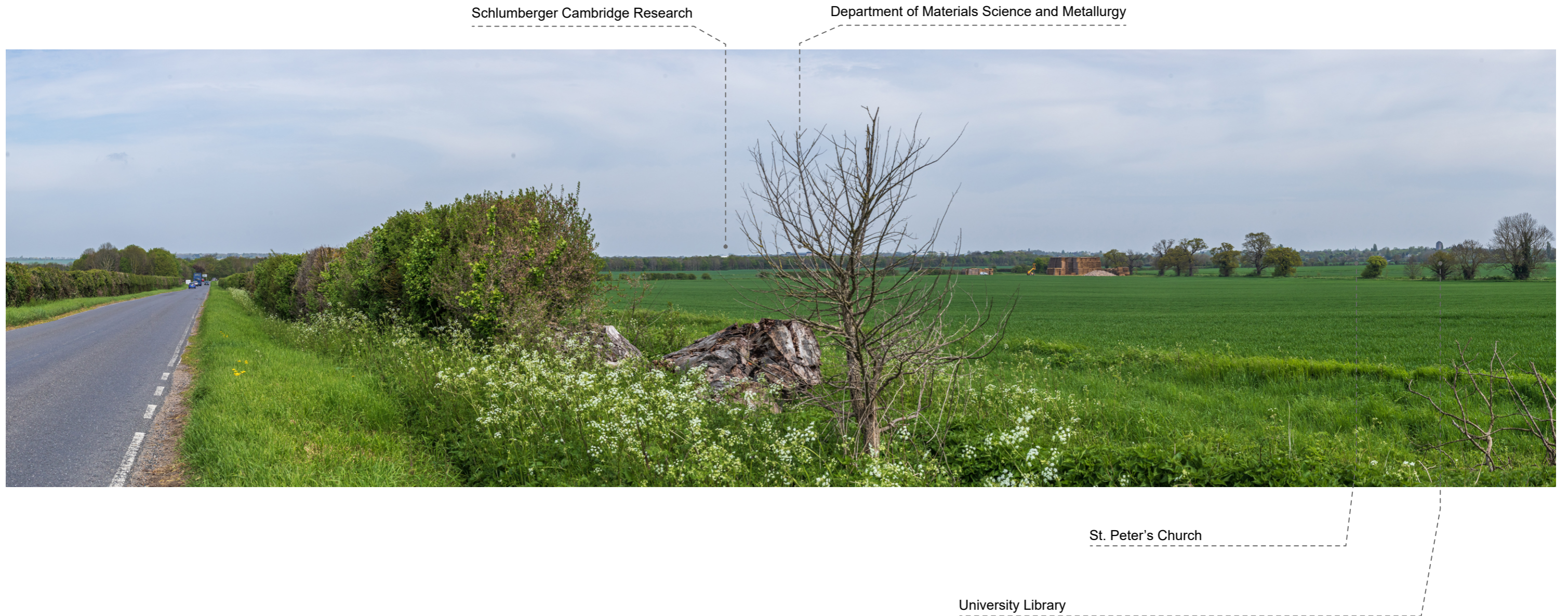


Image Description

Top: View C1, a 90° static panorama taken from the northern side of Coton Road. The image is annotated to indicate key points in the city's skyline.

Key Elements and Sensitivities

- Views of the historic core are visible above the distant treeline to the east, especially in the right of the image. The University Library Tower and St. Peter's Church are clearly visible on the horizon, while several scattered modern developments, such as those in the Institute of Manufacturing, can be glimpsed through gaps in the foliage. Highly sensitive backdrop to these views.
- The image highlights the prominence of the University Library Tower, which commands an impressive visual magnitude to the east. The interplay between the tower and its obstructing foliage is evident, conveying the link between Cambridge's urban centre and its more rural outskirts.
- The skyline across much of western Cambridge is interrupted, with tree cover obscuring much of Cambridge and associated development. However, the Institute of Manufacturing, with its stark white architecture, remains visible through gaps in the foliage. Moderately sensitive to isolated developments breaking the skyline.
- Large areas of the view are rural, with a slightly elevated distant backdrop. Minor changes in the region's topography are clear in the background on the left of the image. The area is less sensitive to new development, but tall structures could dominate the view due to the area's flat topography.