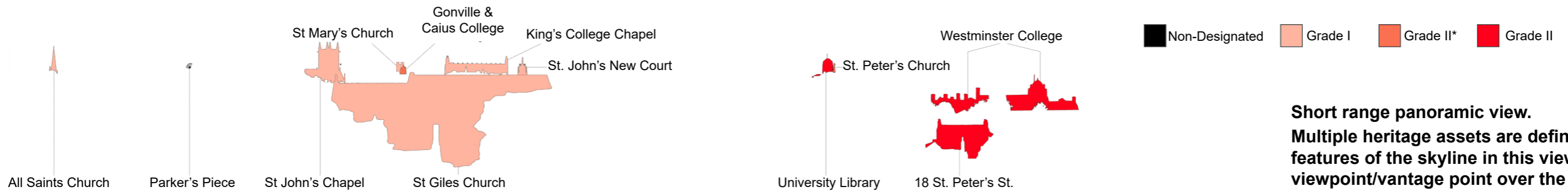


Viewpoint A: Castle Mound

Extent of View A1

Extent of View A2



Short range panoramic view. Multiple heritage assets are defining features of the skyline in this view. Historic viewpoint/vantage point over the city.

Image Description

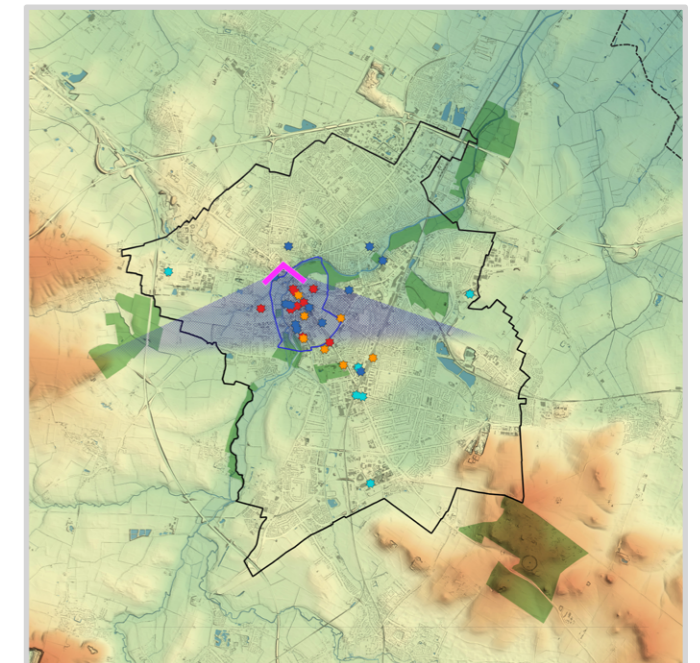
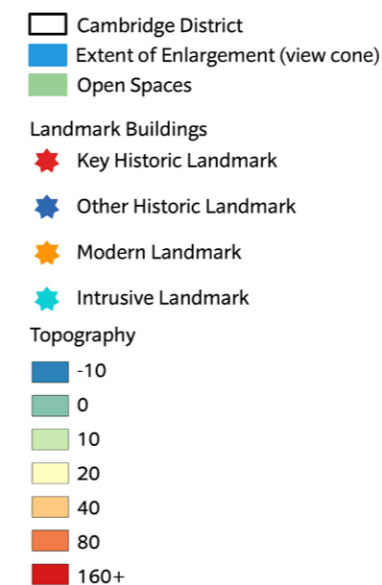
Top: A 180° static panorama taken from Important, wide ranging viewpoint on the top of scheduled Castle Mound. Annotated to point out the extents of views A1 and A2.

Bottom: A line drawing of view B1, coloured to visualise the visual magnitude of numerous landmark buildings visible from viewpoint A. These are colour-coded to signify their listing status (see key).

Right: A map showing the extent of the view, denoted by a blue view cone.

Key Elements and Sensitivities

- The vantage point atop Castle Mound provides a commanding view of Cambridge's Historic Core. Numerous notable buildings hold significant visual prominence from this perspective, occupying the midground of the image between the horizon line and the foreground. Consequently, this scenic backdrop is highly susceptible to alterations or modifications.
- The midground, consisting mostly of uninterrupted woodland, extends towards an elevated rural skyline in the distance. This combination creates the impression that the city is nestled within a rural setting. Residential developments to the west of the mound are effectively concealed by the dense foliage, although several Grade II listed buildings, such as Westminster College and 18 St Peter's St., stand out prominently. These areas exhibit a moderate level of sensitivity to isolated development that would disrupt the skyline.
- Due to Castle Mound's prominent location near the heart of Cambridge's core, it offers panoramic views of the city's historic architecture in all directions. Vertical elements within the view are also visible beyond the core, particularly towards the north, where Shire Hall occupies a prominent position in the foreground.
- The numerous wooded areas contribute to a distinct separation between vertical elements in the landscape. Many of these wooded areas are encompassed within Registered Parks and Gardens, although the parks themselves remain completely obscured by the architectural features in the foreground.



Strategic Viewpoint A

Viewpoint A1: Castle Mound



Image Description

Top: View A1, a 90° static panorama taken from Important, wide ranging viewpoint on the top of scheduled Castle Mound. This sub-viewpoint is particularly important, as it shows the historic core in the midground, with a large visual magnitude.

The image is annotated to point out the extents of views A1 and A2. The image is annotated to indicate key points in the city's skyline.

Key Elements and Sensitivities

- The elevated position atop Castle Mound affords a commanding panoramic vista of the Historic Core of Cambridge. From this vantage point, numerous historic structures assume a significant visual presence, occupying the midground of the landscape composition between the horizon line and the foreground. This is broken by a significant gap to the left of St. Giles' Church (A), marking the location of St. Johns College. Consequently, this backdrop is highly susceptible to alterations or modifications that may impact its aesthetic integrity.
- The midground, primarily composed of undisturbed woodlands, stretches towards an elevated rural skyline in the distance. This amalgamation creates the illusion that the city is nestled in a pastoral setting. Residential developments located to the south of the mound are concealed by the trees in the immediate foreground. The highly magnitudinous St. Giles Church also blocks a significant portion of the view (approximately 10.7% of the 180-degree panorama). These areas exhibit a moderate degree of sensitivity to isolated development that could potentially disrupt the existing skyline.
- It is important to acknowledge the intrinsic value of the view from Castle Mound, which not only captures the architectural richness of Cambridge's Historic Core but also the city's relationship with its surrounding parks and gardens. Therefore, any proposed alterations or modifications to this landscape should be undertaken with the utmost care and consideration, taking into account the preservation of the visual coherence and historical significance that define the area's unique character.
- Several landmark buildings have a particularly high visual magnitude from this perspective. St. John's Chapel, prominent from other viewpoints, has its highest instance of visual magnitude from this perspective. Kings College, though obscured at its base, is visible from an otherwise full-profile perspective. The University Library, All Saints Church, and St. John's College are all visible to a lesser extent and are therefore susceptible to alterations given their lower visual magnitude.
- The far side of Cambridge is represented by Addenbrooke's Chimney, which appears small on the horizon.

Viewpoint A2: Castle Mound



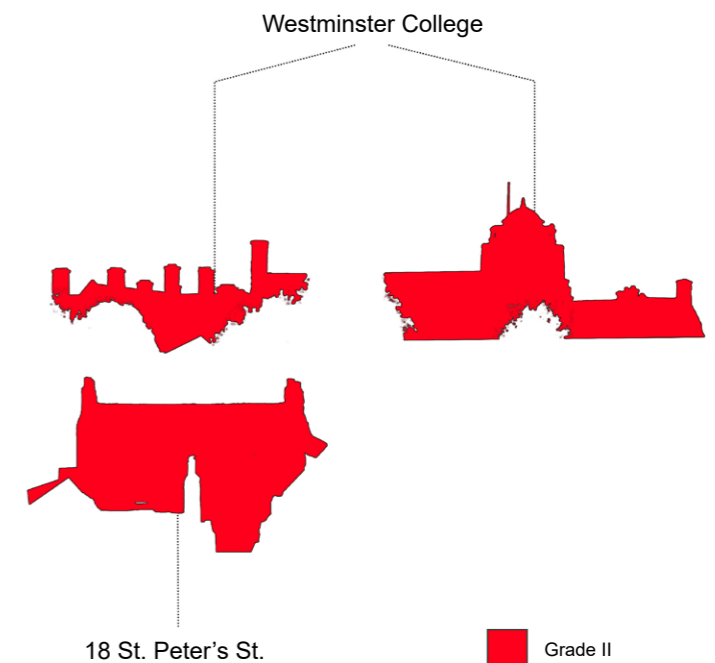
Image Description

Top: View A2, a 90° static panorama taken from Important, wide ranging viewpoint on the top of scheduled Castle Mound. The image is annotated to indicate key points in the city's skyline.

Right: An enlargement of the view. 18 St. Peter's Street and Westminster College are highlighted.

Key Elements and Sensitivities

- This viewpoint overlooks a highly developed foreground with minimal tree coverage. Moderate sensitivity to change.
- Much of the foliage in the midground, on the left side of the image, belongs to the grounds of St. John's College. Despite this, no ground can be seen, as 19th and early 20th-century developments block views down to street level.
- Westminster College is highly conspicuous from this perspective, with its small central dome breaking the treeline above the grounds of St. John's College. The Grade II-listed 18 St. Peter's Street is also prominent in view. Almost the entire frontage of the building is visible, broken only by a chimney stack in the foreground.
- The background of the image is mostly treed, with an elevated upland landscape forming the horizon line to the west. This is moderately sensitive to change, as at present, only the small dome of Westminster College breaks into this elevated background.



Viewpoint A3: Castle Mound



Image Description

Top: A 360° static panorama from viewpoint A. Annotated to point out the extents of views A1, A2, A3, A4, as well as the silhouetted enlargement above.

Bottom: View A3, a 90° static panorama taken from Important, wide ranging view from a viewpoint on top of scheduled Castle Mound. The image is annotated to indicate key points in the city's skyline.

Key Elements and Sensitivities

- A highly treed foreground gives way to an otherwise open view towards East Cambridge. Moderate sensitivity to change.
- The left third of the image is completely obscured by the foreground treeline, blocking the suburban outskirts of northern Cambridge. It is important to acknowledge the importance of this obscuration, as it serves as a prime illustration of the treed landscapes characteristic of the region. From here, such landscapes can be clearly observed in the immediate foreground.
- Cambridge City Airport possesses a relatively high visual magnitude, primarily attributed to the absence of tree coverage to the east of its runway. Additionally, the bright white hue of the airport's hangars creates a visual contrast with the predominantly rural environment. This particular vista holds significance as it demonstrates the abruptness of Cambridge's skyline, with the airport visible before rural fields.
- The scheduled chimney of the Museum of Technology (Old Cheddar's Lane pumping station) stands both isolated and prominent in the view, achieving a relatively high visual magnitude despite its distance (of approximately 2km). The scale of the chimney on the horizon demonstrates the impact of the now scarce industrial architecture on Cambridge. Conversely, its isolated nature on the skyline demonstrates the sparsity of industrial buildings on Cambridge's skyline. Highly sensitive to change.
- Despite the right side of the image leading directly into view A1, the Historic Core is entirely absent from view. Instead, the right third of the image looks out onto a notable gap in the cityscape, between All Saints Church and Cambridge Airport, occupied by 19th to early 20th-century housing developments.