

Greater Cambridge Food Growing Spaces Study

Appendix A

Greater Cambridge Shared Planning Service

Final report (excluding Delivery and Stewardship Strategy)

Prepared by LUC and Social Life

May 2026



Version	Status	Prepared	Checked	Approved	Date
1	Draft	C Bowden A Jennings R Myerscough M Ngemoh	C Bowden	T Livingston	30.03.2026
2	Final (excluding Delivery and Stewardship Strategy)	C Bowden A Jennings	C Bowden	T Livingston	12.05.2026
3					



Land Use Consultants Limited

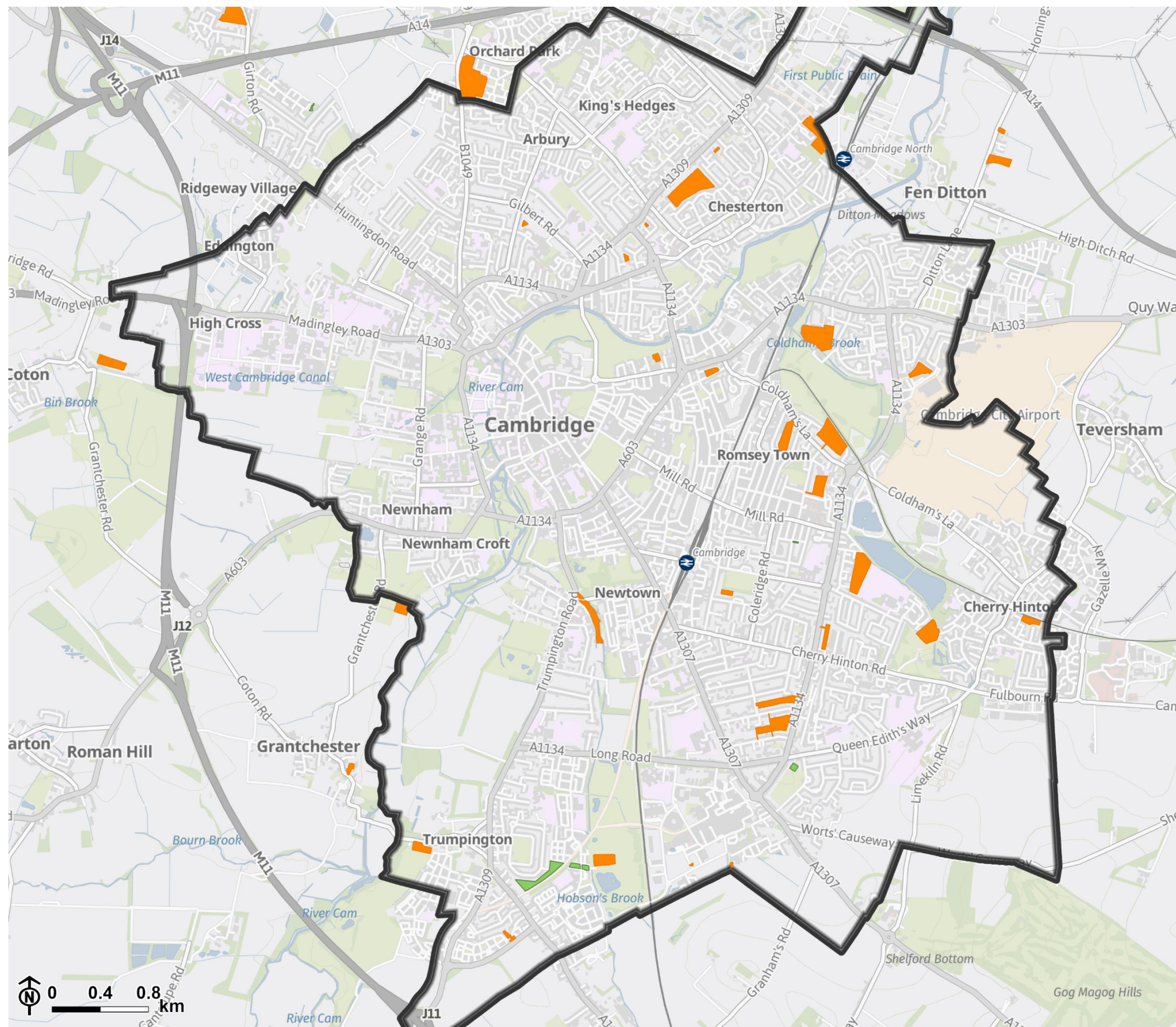
Registered in England. Registered number 2549296. Registered office: 250 Waterloo Road, London SE1 8RD. Printed on 100% recycled paper

Appendix A

Maps

Cambridge

Figure A.1: Location of existing allotments, community gardens and orchards in Cambridge



Legend

- Greater Cambridge
- Allotments
- Community gardens and orchards

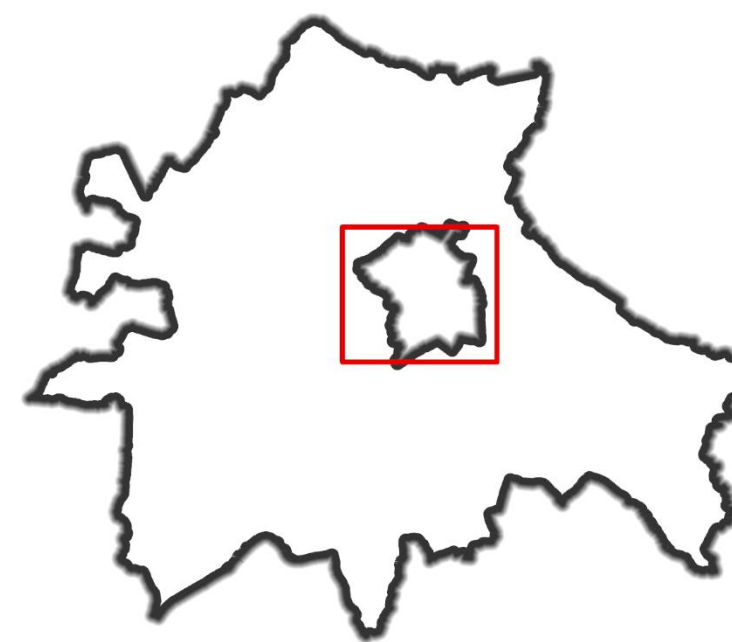
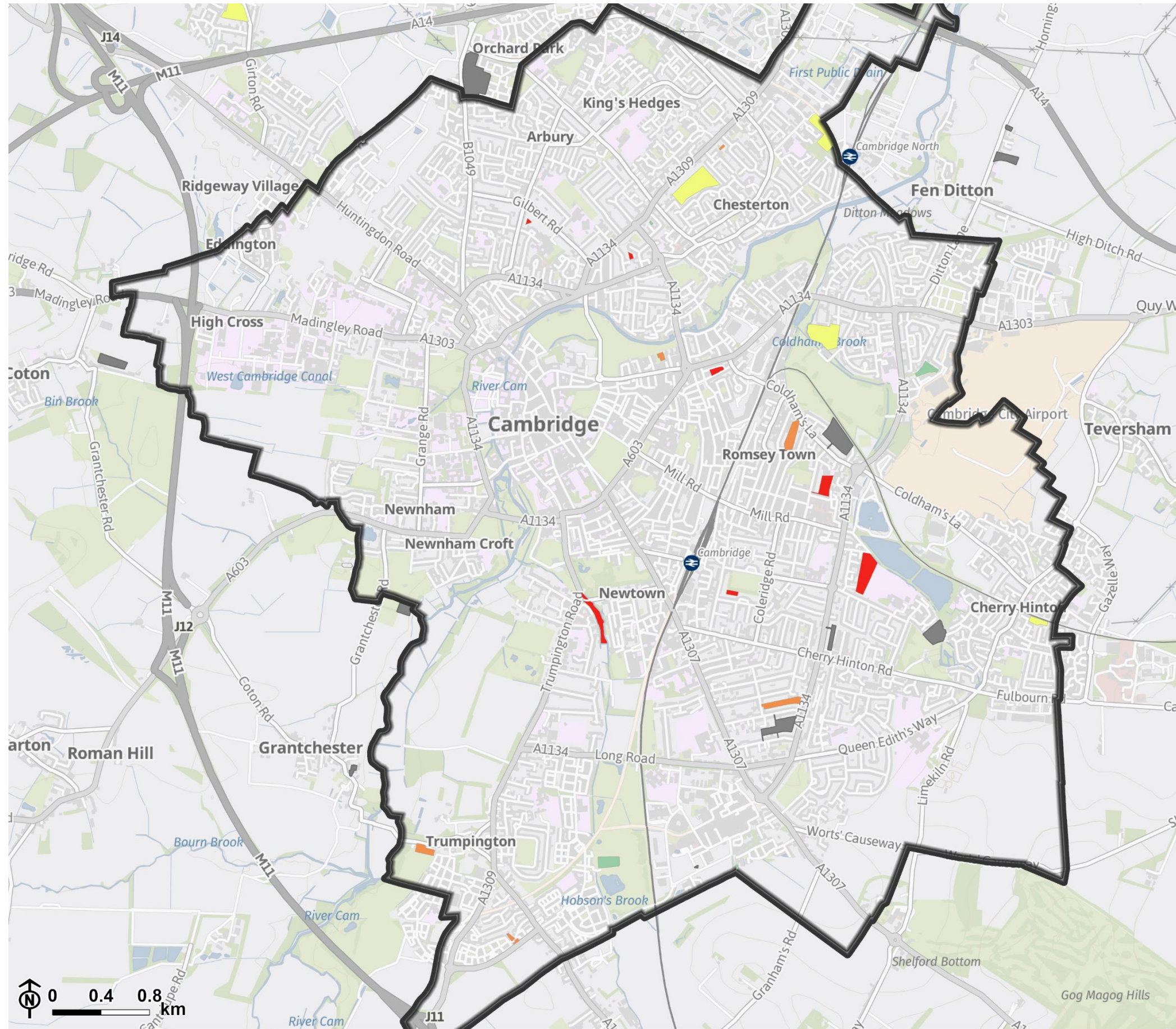
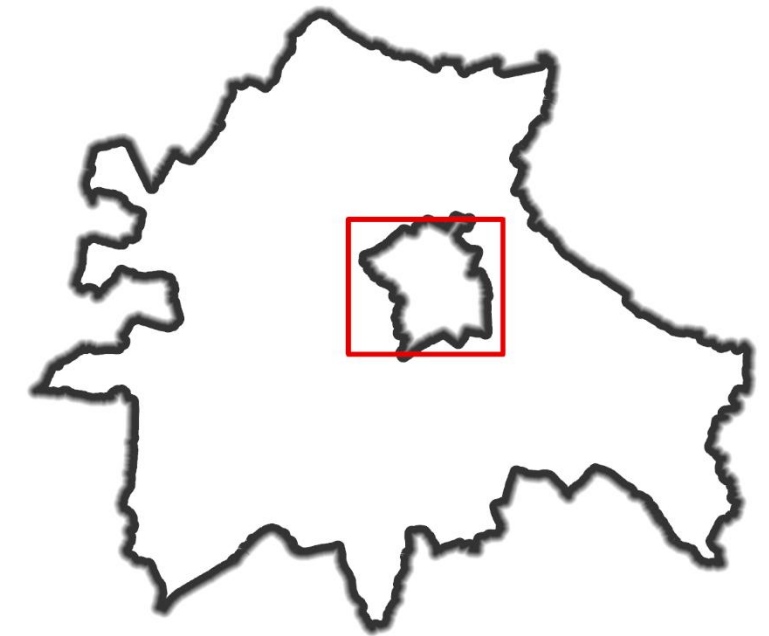


Figure A.2: Demand for allotments in Cambridge



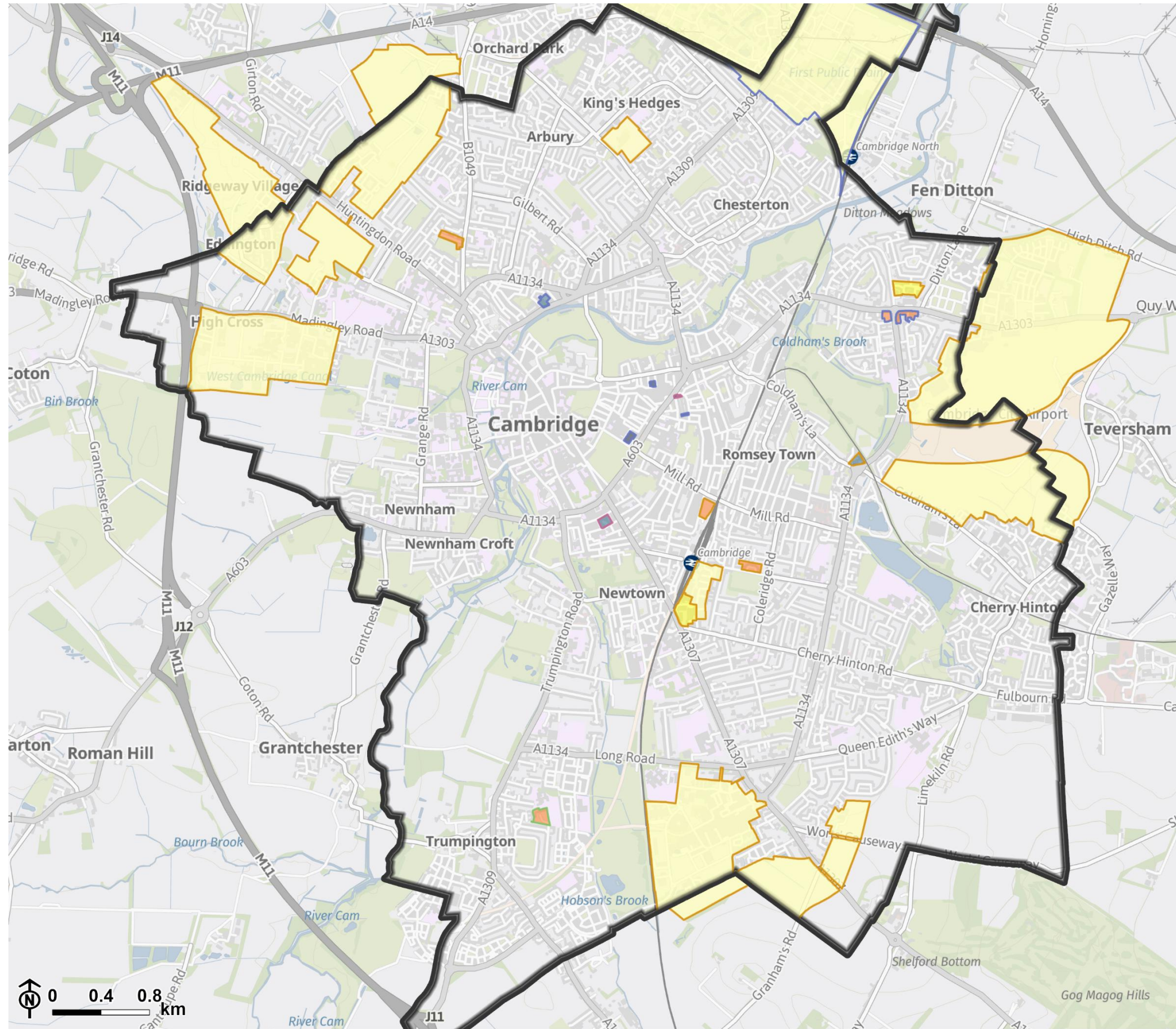
Legend

- Greater Cambridge
- Demand for allotments (people on waiting list)**
- Plots available
- < 4
- 5 - 10
- 11 - 36
- > 37
- No data



Created by LUC - 16808_001_Cambridge_Baseline_Figures/A3L_CambridgeCity 30/03/2026
 Contains OS data © Crown Copyright and database right 2025, Contains OS data © Crown Copyright and database right 2026. Contains data from OS Zoomstack

Figure A.3: Residential and mixed use allocations by site typology in Cambridge



Legend

Greater Cambridge

Residential and mixed use allocations by typology - size

- Very large
- Large
- Medium
- Small
- Very small

Residential and mixed use allocations by typology - density

- Very high
- High
- Medium
- Low

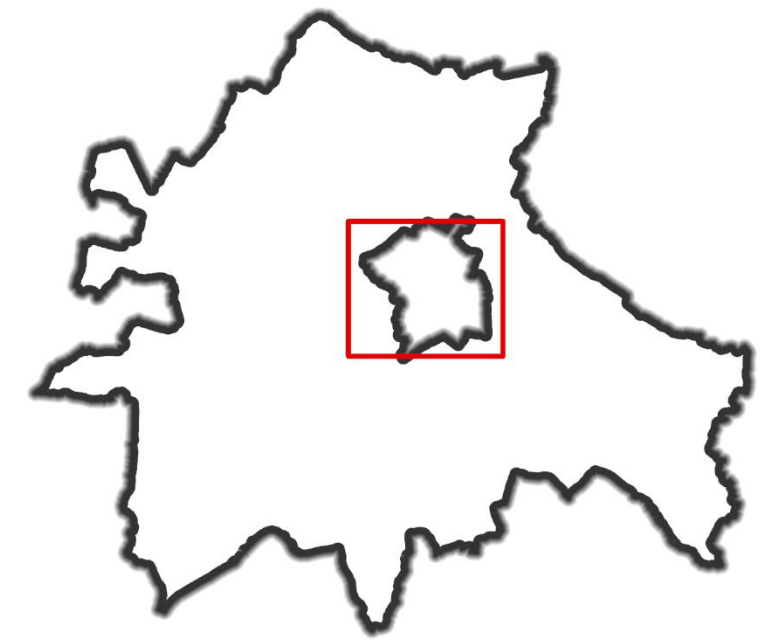
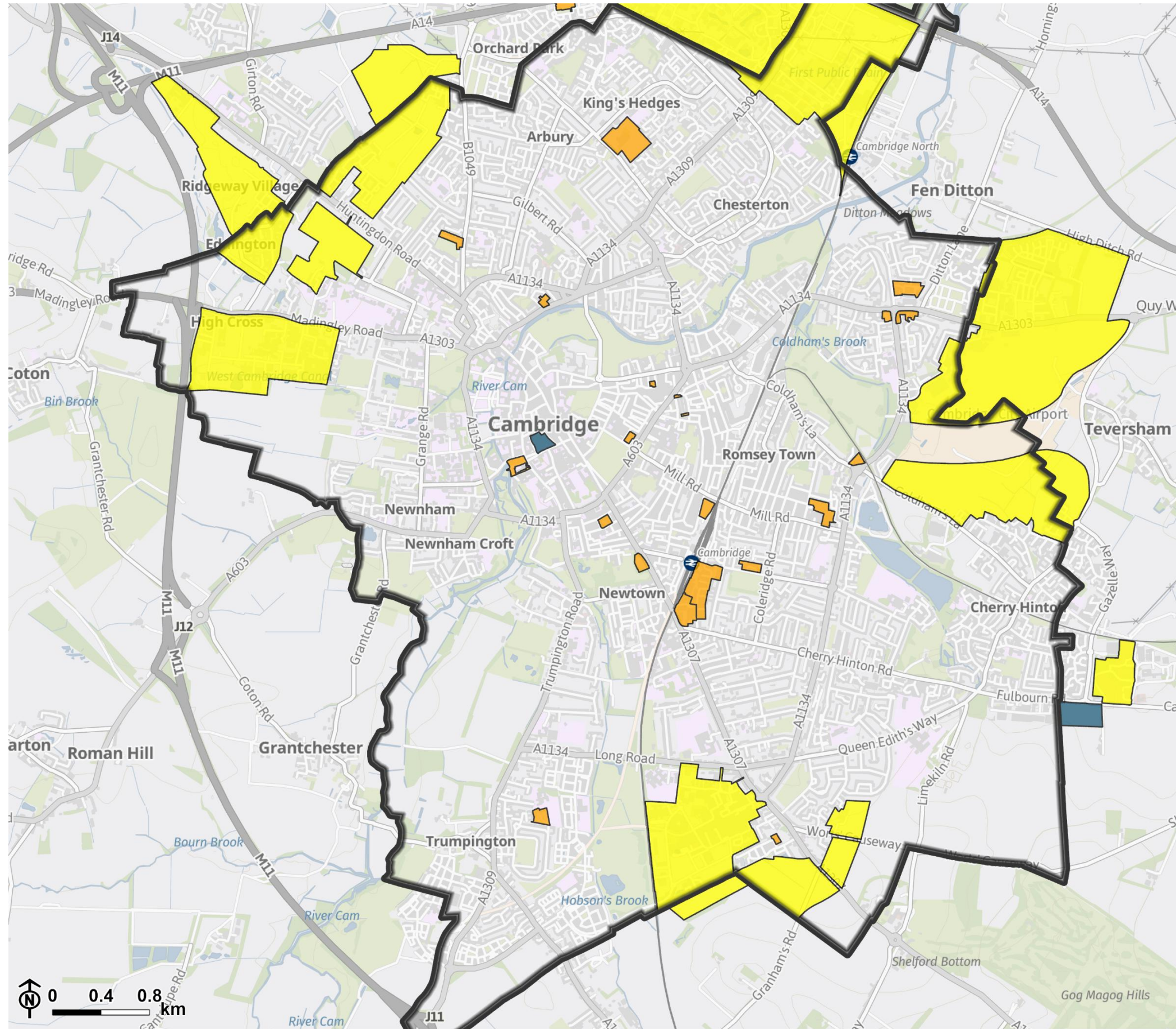


Figure A.4: Overall evaluation of allocations to support food growing in Cambridge



Legend

Greater Cambridge

Overall evaluation of allocations to support food growing

- Little or no potential to deliver food growing
- Limited opportunities to deliver food growing and unlikely to meet required standard
- Good opportunities to deliver food growing on-site to meet required standard

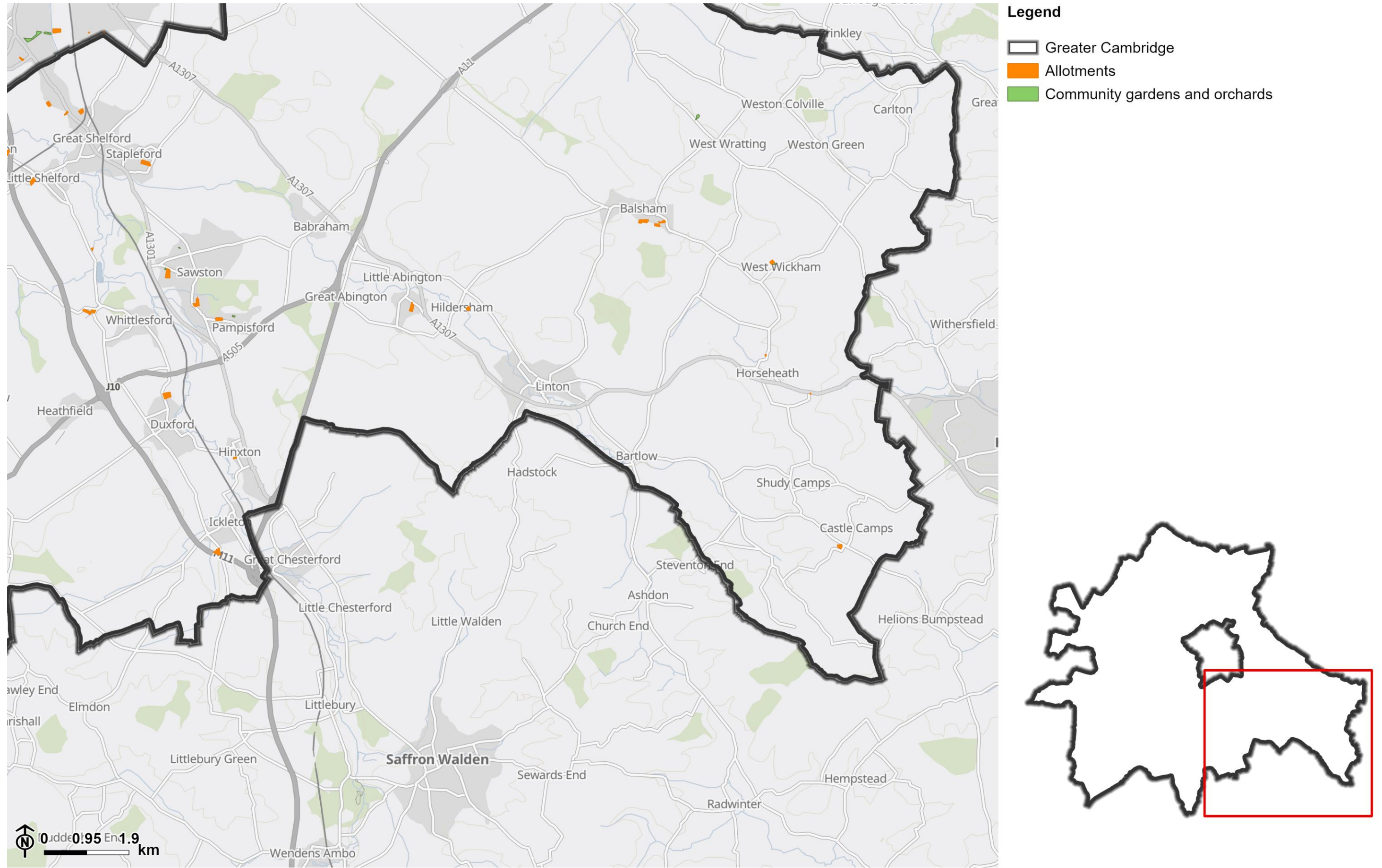


Created by LUC - 16808_001_Cambridge_Baseline_Figures/A3L_CambridgeCity 14/05/2026

Contains OS data © Crown Copyright and database right 2025, Contains OS data © Crown Copyright and database right 2026. Contains data from OS Zoomstack

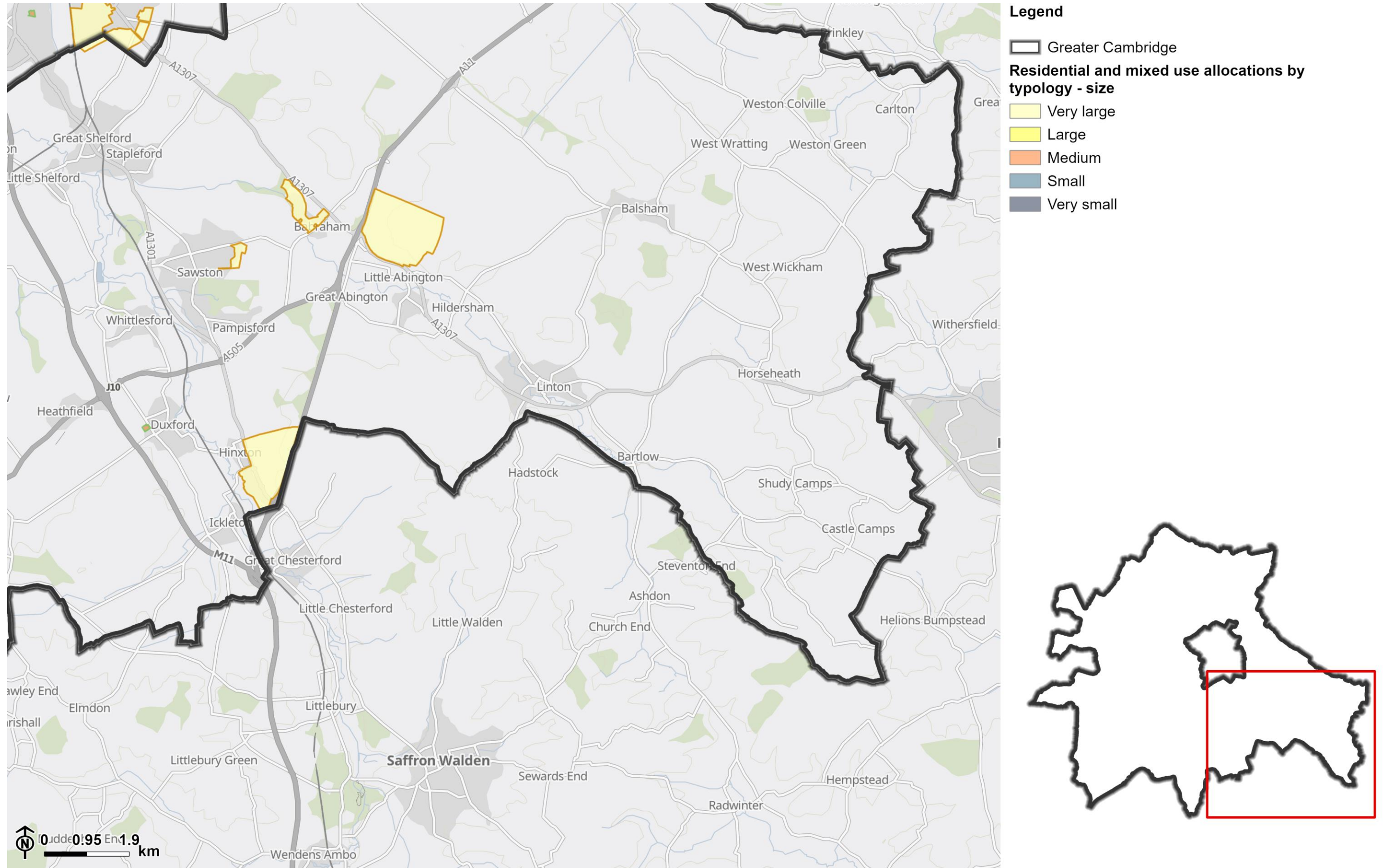
Cambridge East

Figure A.5: Location of existing allotments, community gardens and orchards in Cambridge East



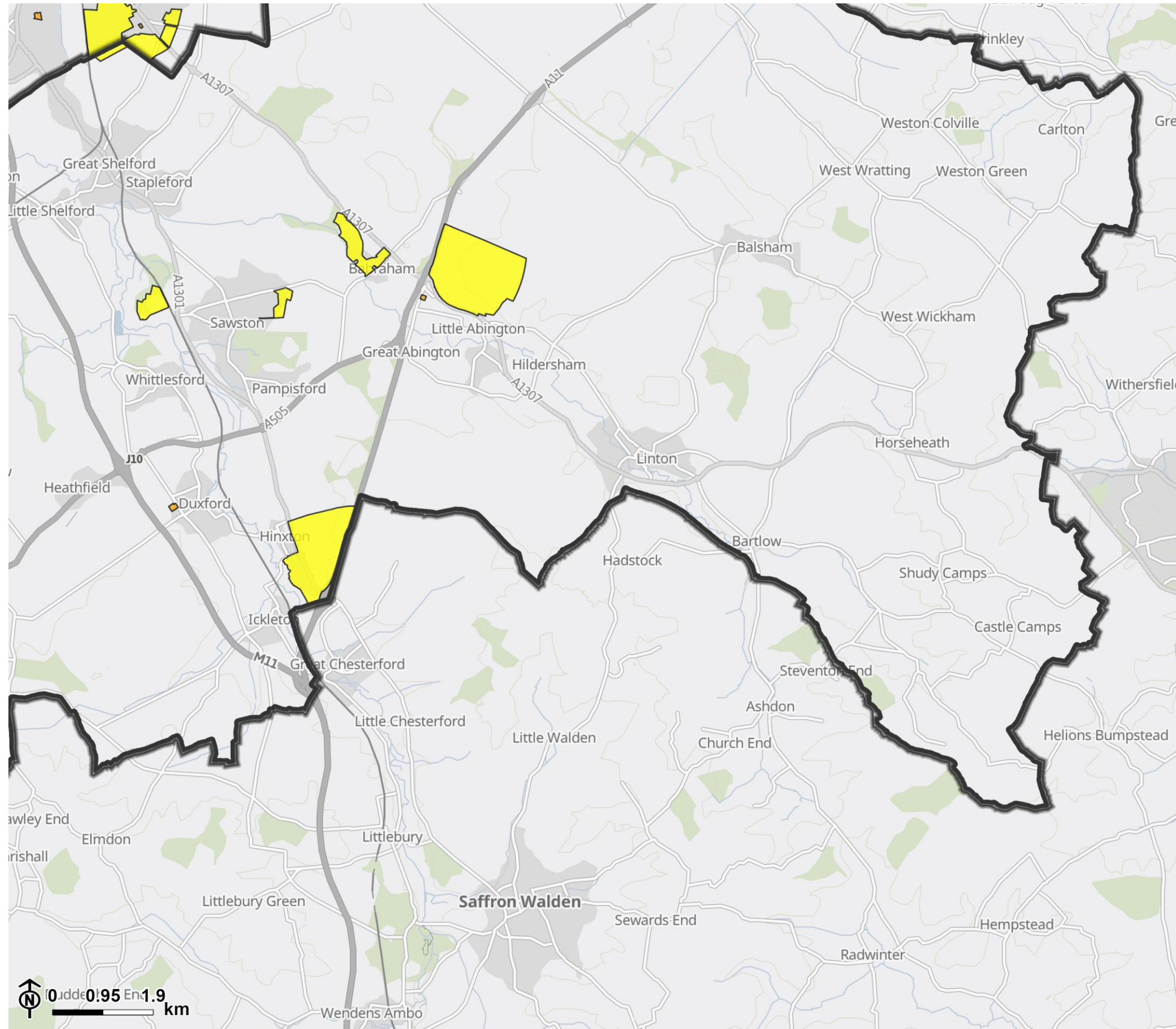
Created by LUC - 16808_001_Cambridge_Baseline_Figures/A3L_CambridgeEast 30/03/2026
Contains OS data © Crown Copyright and database right 2025, Contains OS data © Crown Copyright and database right 2026. Contains data from OS Zoomstack

Figure A.7: Residential and mixed use allocations by site typology in Cambridge East



Created by LUC - 16808_001_Cambridge_Baseline_Figures/A3L_CambridgeEast 08/05/2026
Contains OS data © Crown Copyright and database right 2025, Contains OS data © Crown Copyright and database right 2026. Contains data from OS Zoomstack

Figure A.8: Overall evaluation of allocations to support food growing in Cambridge East

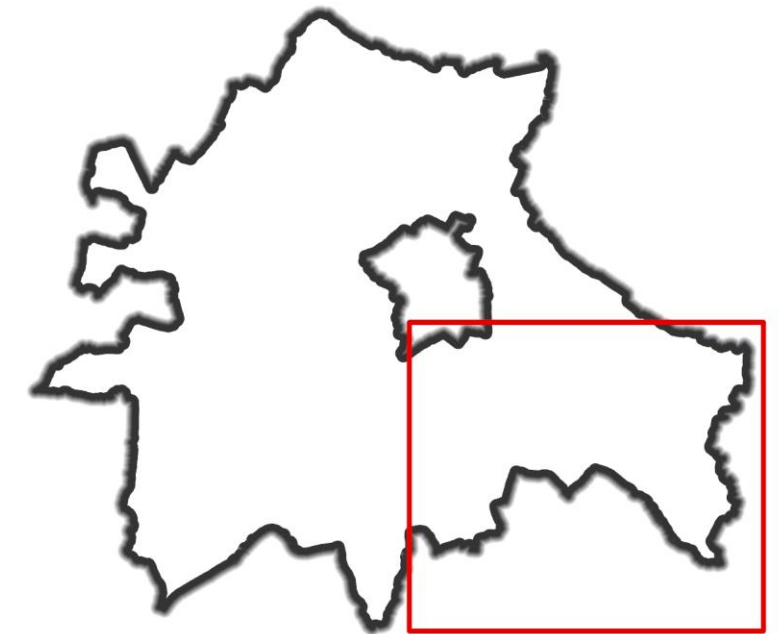


Legend

Greater Cambridge

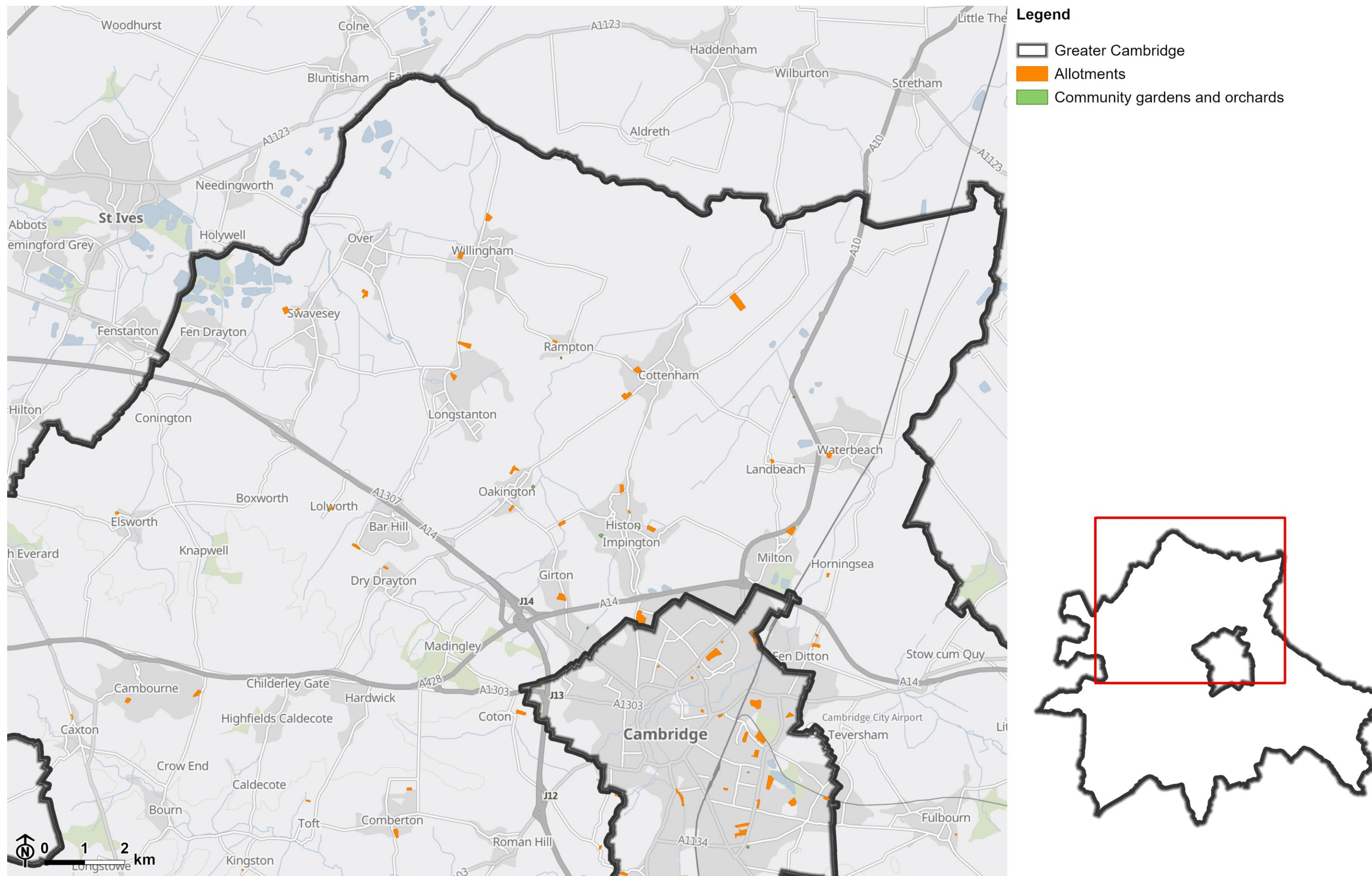
Overall evaluation of allocations to support food growing

- Little or no potential to deliver food growing
- Limited opportunities to deliver food growing and unlikely to meet required standard
- Good opportunities to deliver food growing on-site to meet required standard



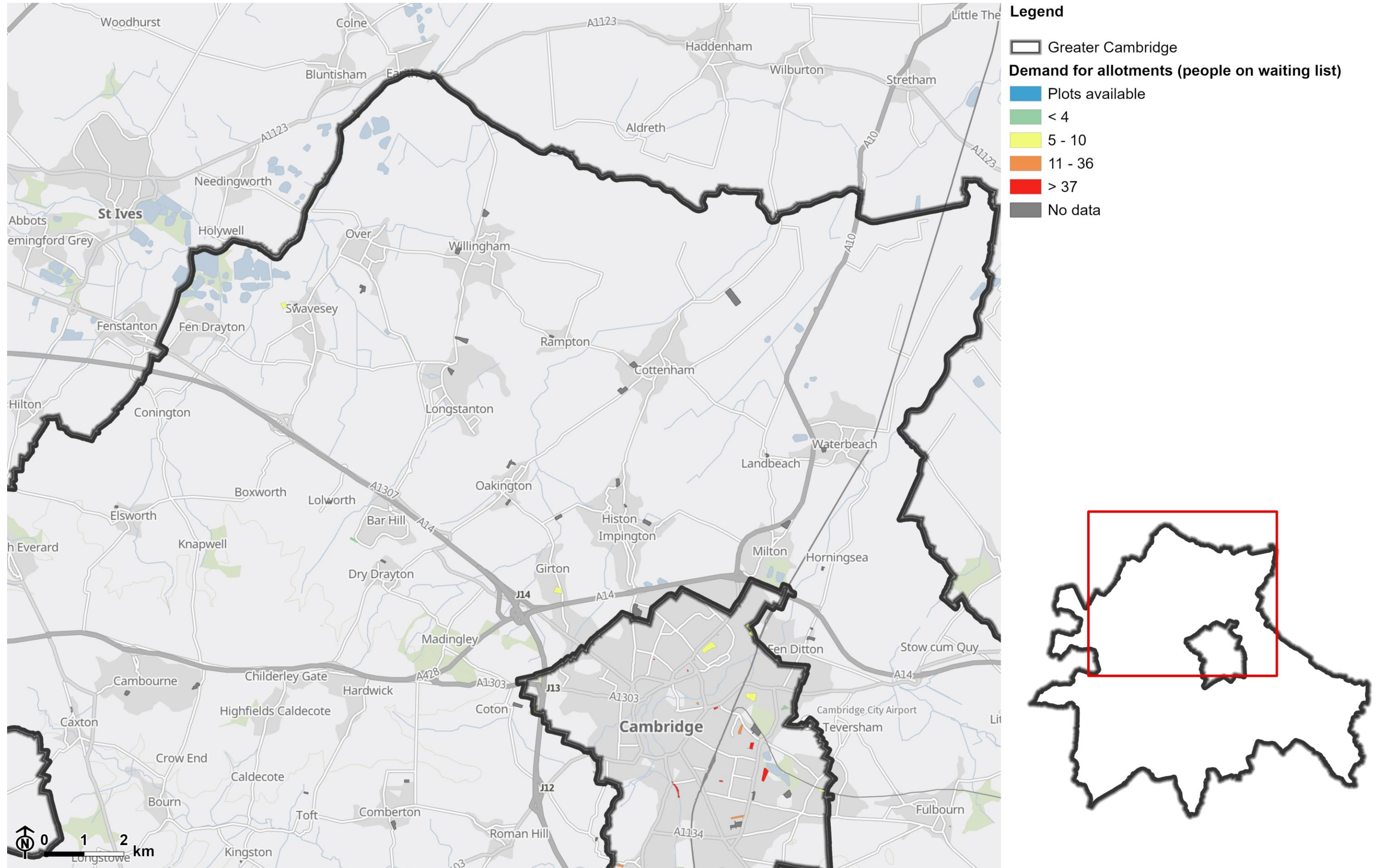
Cambridge North

Figure A.9: Location of existing allotments, community gardens and orchards in Cambridge North



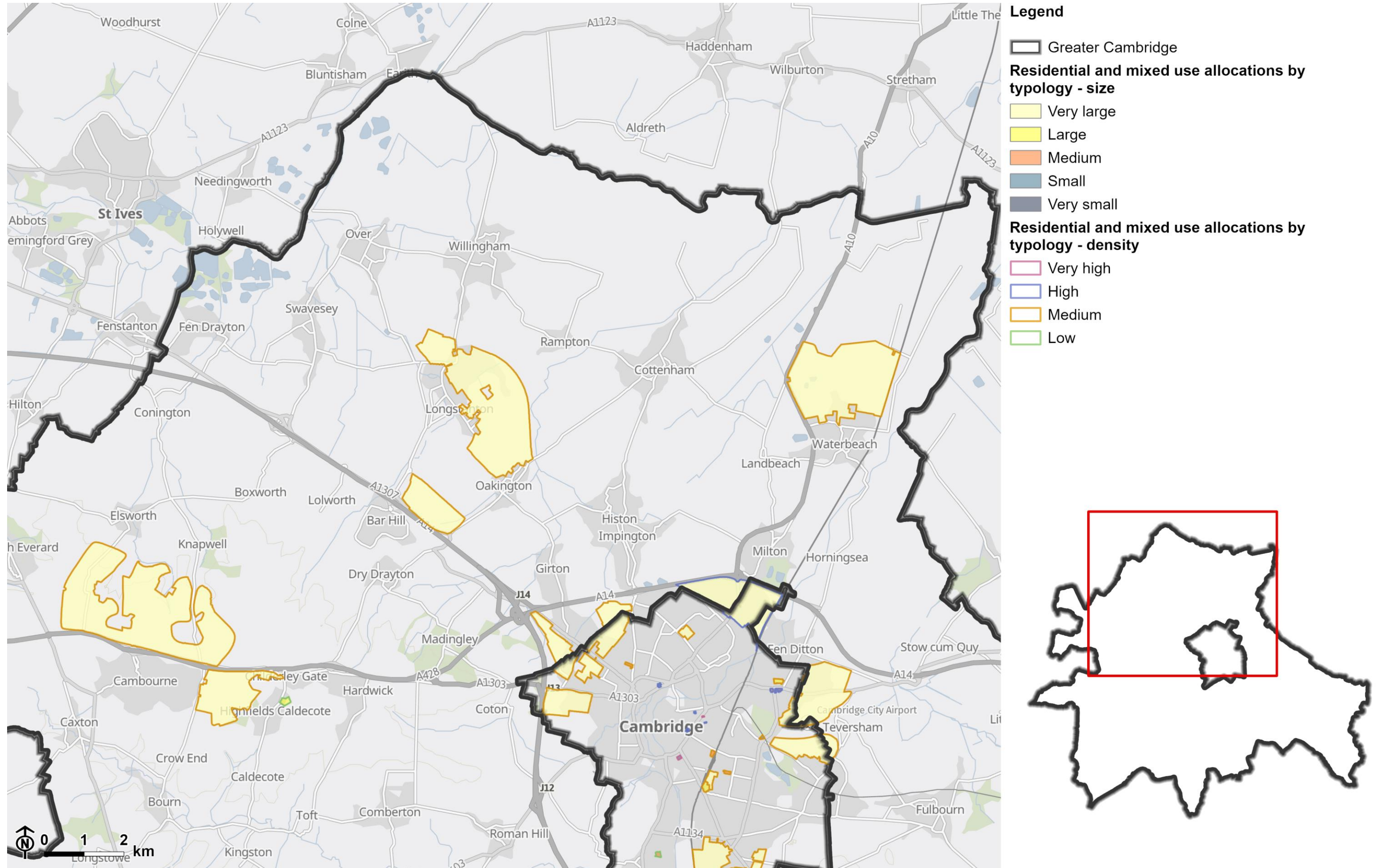
Created by LUC - 16808_001_Cambridge_Baseline_Figures/A3L_CambridgeNorth 30/03/2026
Contains OS data © Crown Copyright and database right 2025, Contains OS data © Crown Copyright and database right 2026. Contains data from OS Zoomstack

Figure A.10: Demand for allotments in Cambridge North



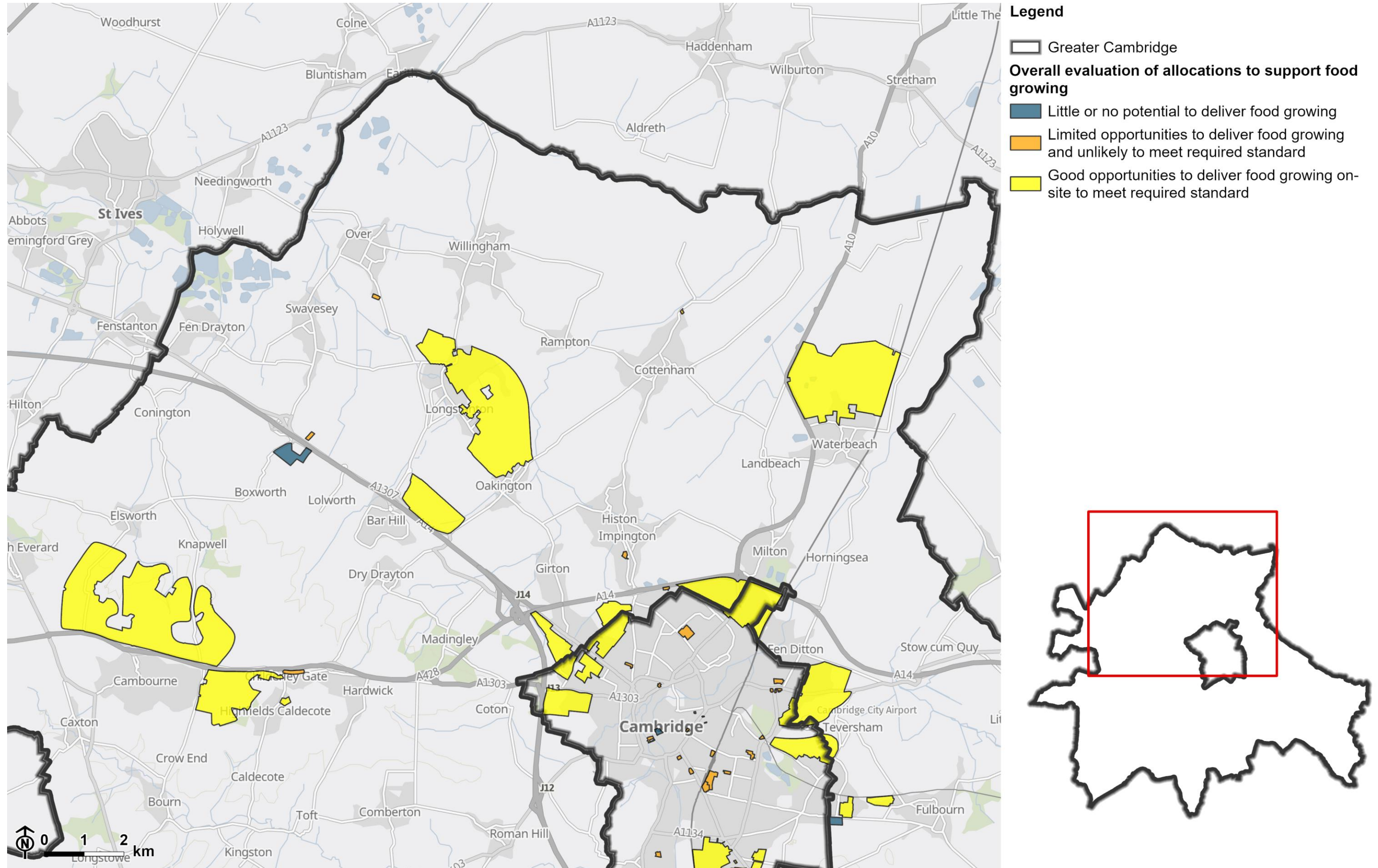
Created by LUC - 16808_001_Cambridge_Baseline_Figures/A3L_CambridgeNorth 30/03/2026
 Contains OS data © Crown Copyright and database right 2025, Contains OS data © Crown Copyright and database right 2026. Contains data from OS Zoomstack

Figure A.11: Residential and mixed use allocations by site typology in Cambridge North



Created by LUC - 16808_001_Cambridge_Baseline_Figures/A3L_CambridgeNorth 08/05/2026
 Contains OS data © Crown Copyright and database right 2025, Contains OS data © Crown Copyright and database right 2026. Contains data from OS Zoomstack

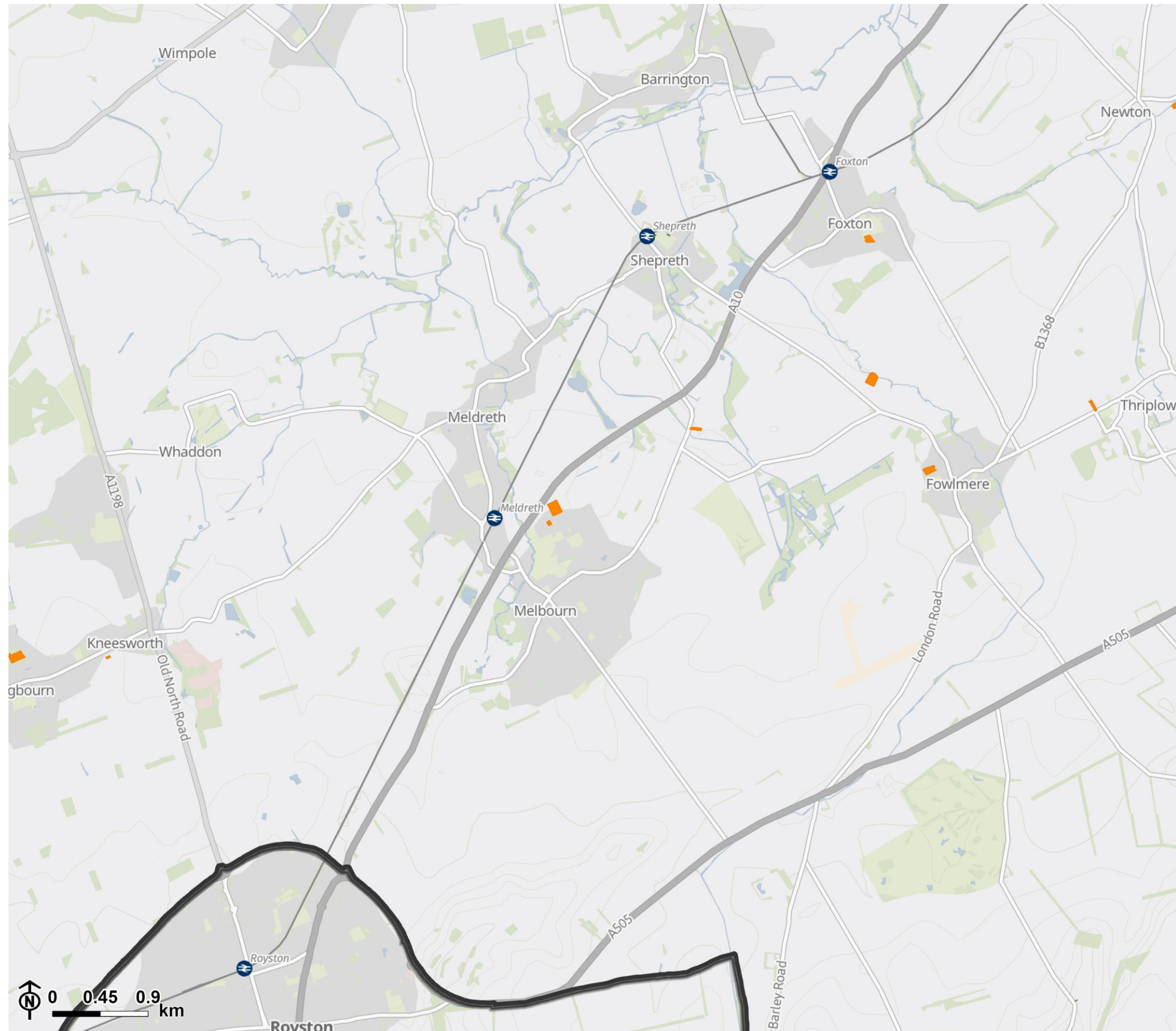
Figure A.12: Overall evaluation of allocations to support food growing in Cambridge North



Created by LUC - 16808_001_Cambridge_Baseline_Figures/A3L_CambridgeNorth 14/05/2026
 Contains OS data © Crown Copyright and database right 2025, Contains OS data © Crown Copyright and database right 2026. Contains data from OS Zoomstack

Cambridge West

Figure A.13: Location of existing allotments, community gardens and orchards in Cambridge West



Legend

- Greater Cambridge
- Allotments
- Community gardens and orchards

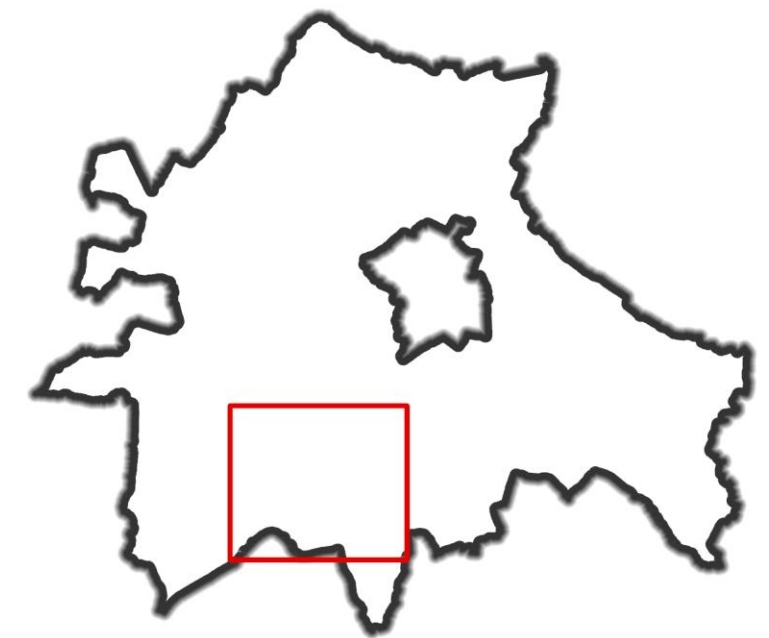
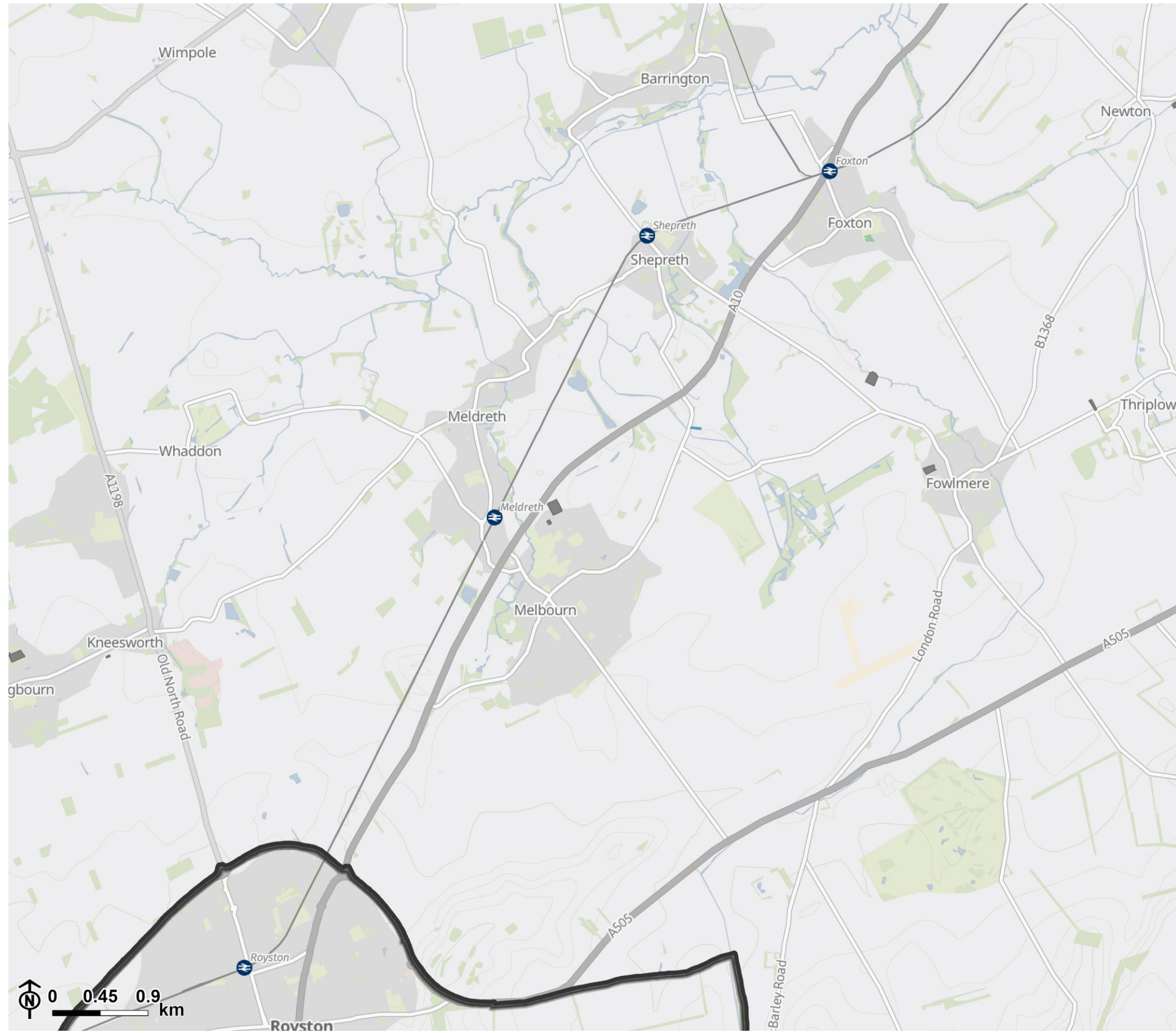


Figure A.14: Demand for allotments in Cambridge West



Legend

- Greater Cambridge
- Demand for allotments (people on waiting list)
- Plots available
- < 4
- 5 - 10
- 11 - 36
- > 37
- No data

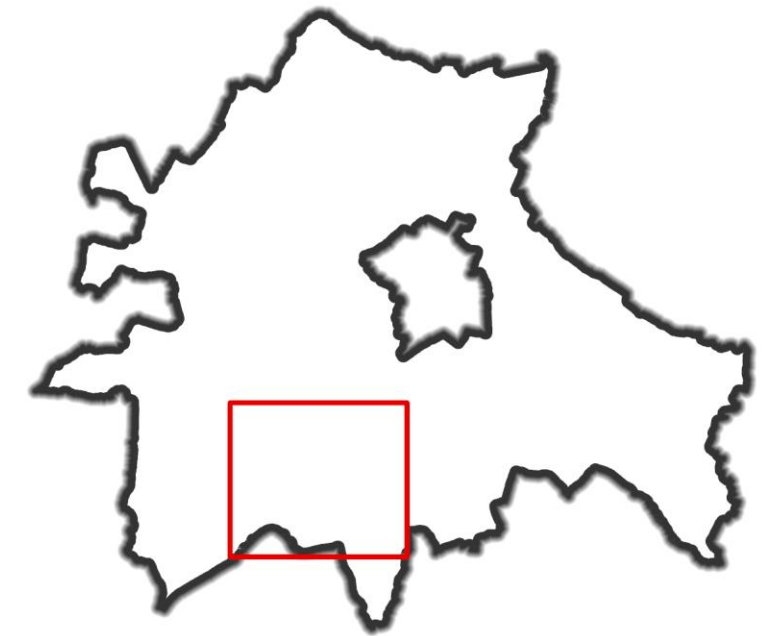
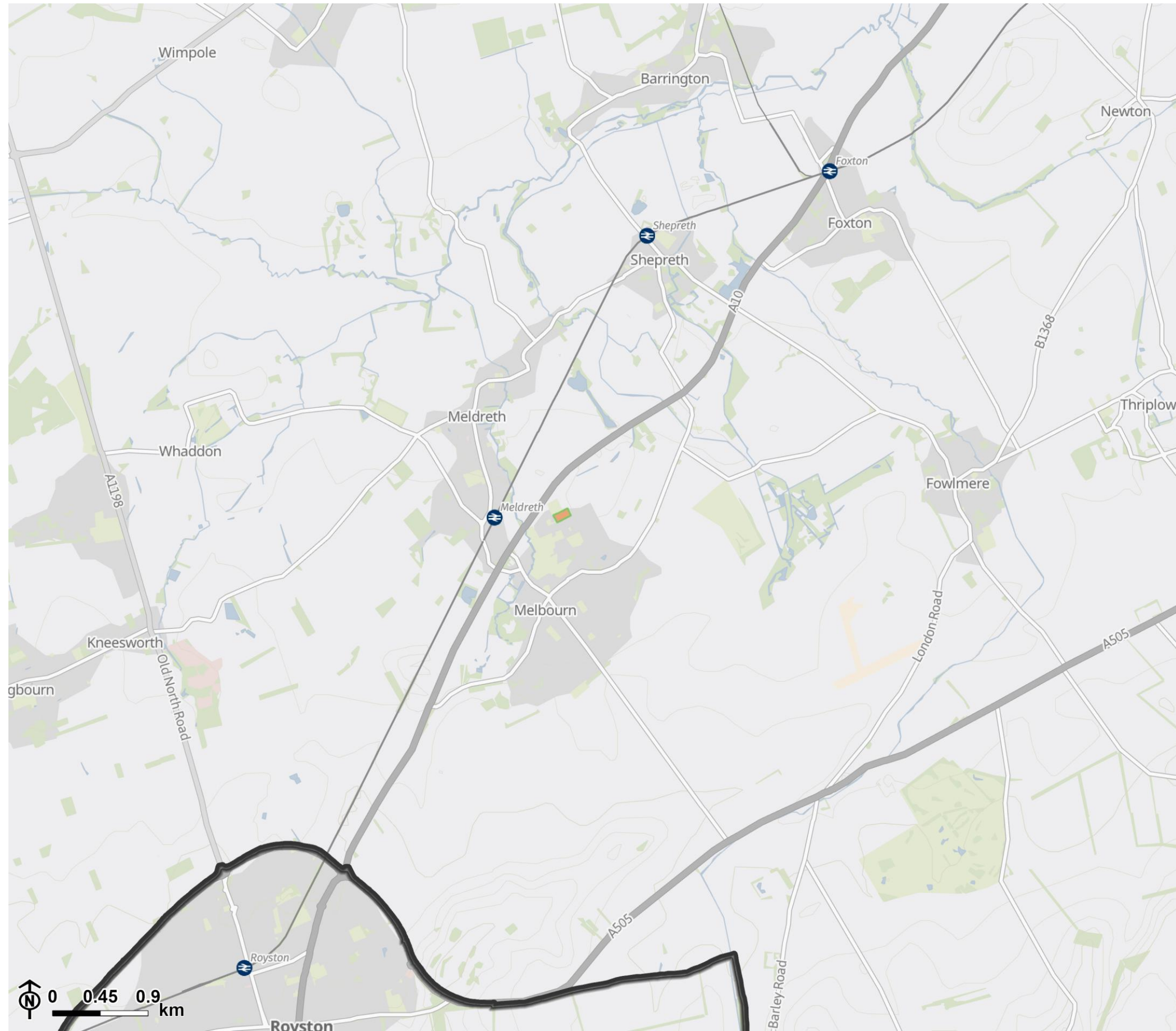


Figure A.15: Residential and mixed use allocations by site typology in Cambridge West



Legend

Greater Cambridge

Residential and mixed use allocations by typology - size

- Very large
- Large
- Medium
- Small
- Very small

Residential and mixed use allocations by typology - density

- Very high
- High
- Medium
- Low

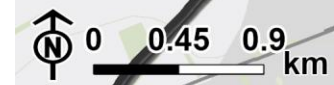
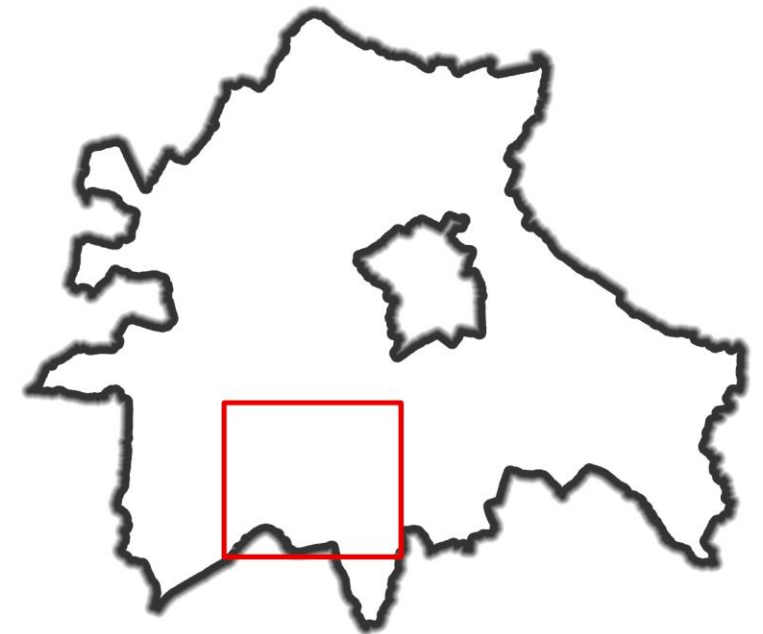
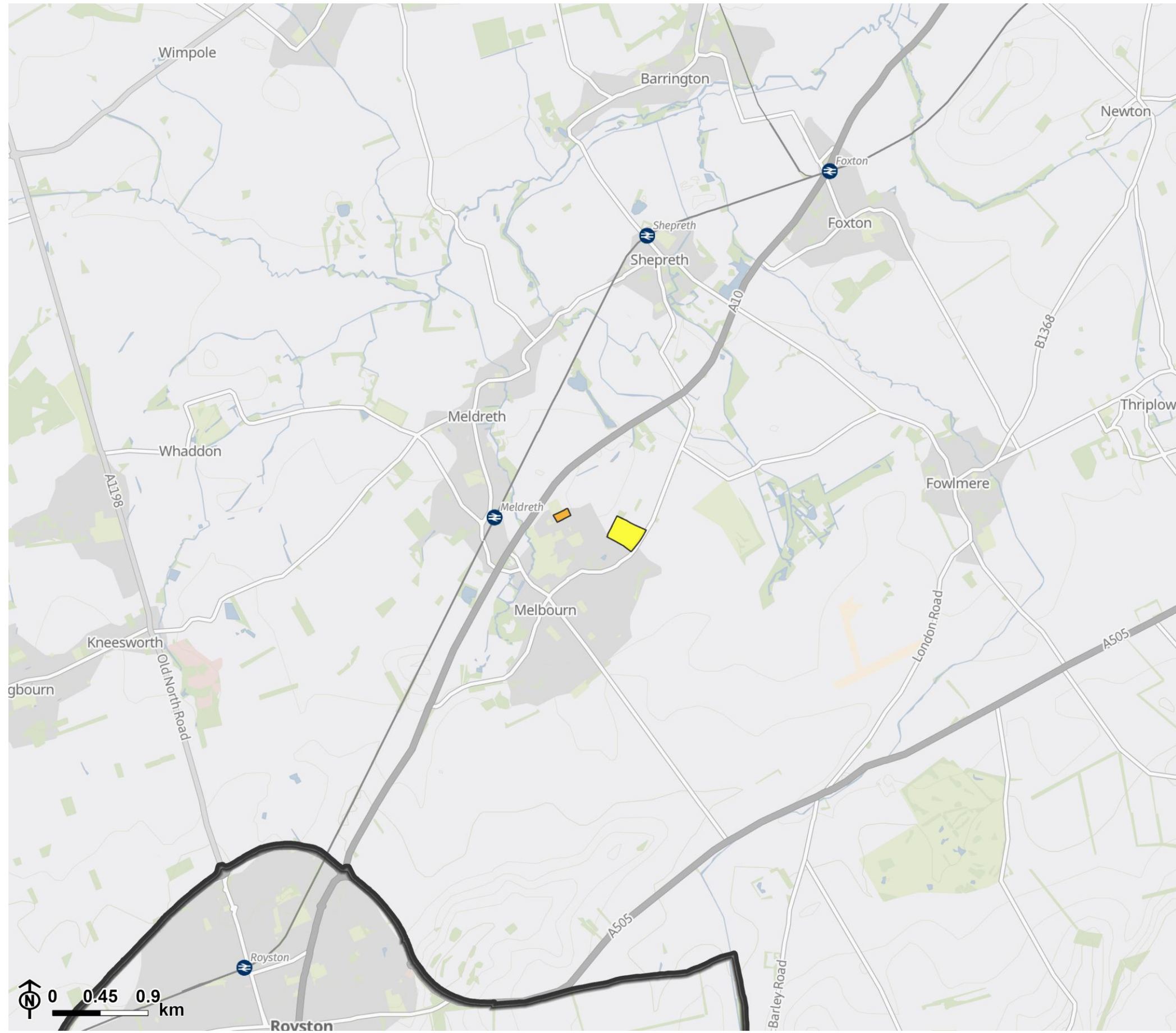


Figure A.16: Overall evaluation of allocations to support food growing in Cambridge West

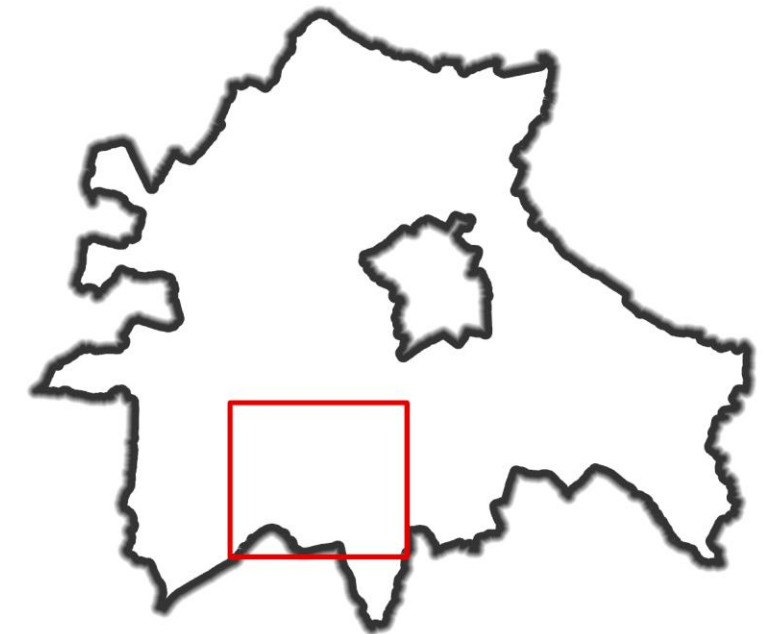


Legend

Greater Cambridge

Overall evaluation of allocations to support food growing

- Little or no potential to deliver food growing
- Limited opportunities to deliver food growing and unlikely to meet required standard
- Good opportunities to deliver food growing on-site to meet required standard



Report produced by LUC

Report produced by LUC

Bristol

12th Floor, Beacon Tower, Colston Street, Bristol BS1 4XE
0117 389 0700

Cardiff

Room 1.12, 1st Floor, Brunel House, 2 Fitzalan Rd, Cardiff CF24 0EB
0292 254 0920

Edinburgh

Atholl Exchange, 6 Canning Street, Edinburgh EH3 8EG
0131 326 0900

Glasgow

5th Floor, The Garment Factory, 10 Montrose Street, Glasgow G1 1RE
0141 403 0900

London

250 Waterloo Road, London SE1 8RD
020 7199 5801

Manchester

4th Floor, 57 Hilton Street, Manchester M1 2EJ
0161 802 2800

Sheffield

32 Eyre Street, Sheffield, S1 4QZ
0114 392 2366

Email address for general enquiries: hello@landuse.co.uk

landuse.co.uk

Landscape Design / Strategic Planning & Assessment / Transport Planning
Development Planning / Urban Design & Masterplanning / Arboriculture
Environmental Impact Assessment / Landscape Planning & Assessment
Landscape Management / Ecology / Historic Environment / GIS & Visualisation