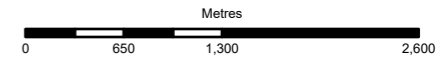


Legend

- Superblocks
- Edge of development
- Employment corridor
- Residential along transport corridor
- Town centre / local centre
- 5km Study Area Buffer
- Existing Settlement Boundary

Coordinate System: British National Grid
 Contains Ordnance Survey data © Crown copyright and database right 2025
 EWR Route and Stations: MWJV 2024 © OpenStreetMap contributors



P01	01/07/26	CO	ZO	SJ
Rev	Date	By	Chkd	Appd

ARUP
 8 Fitzroy Street
 London W1T 4BJ
 T +44 117 976 5432
 www.arup.com

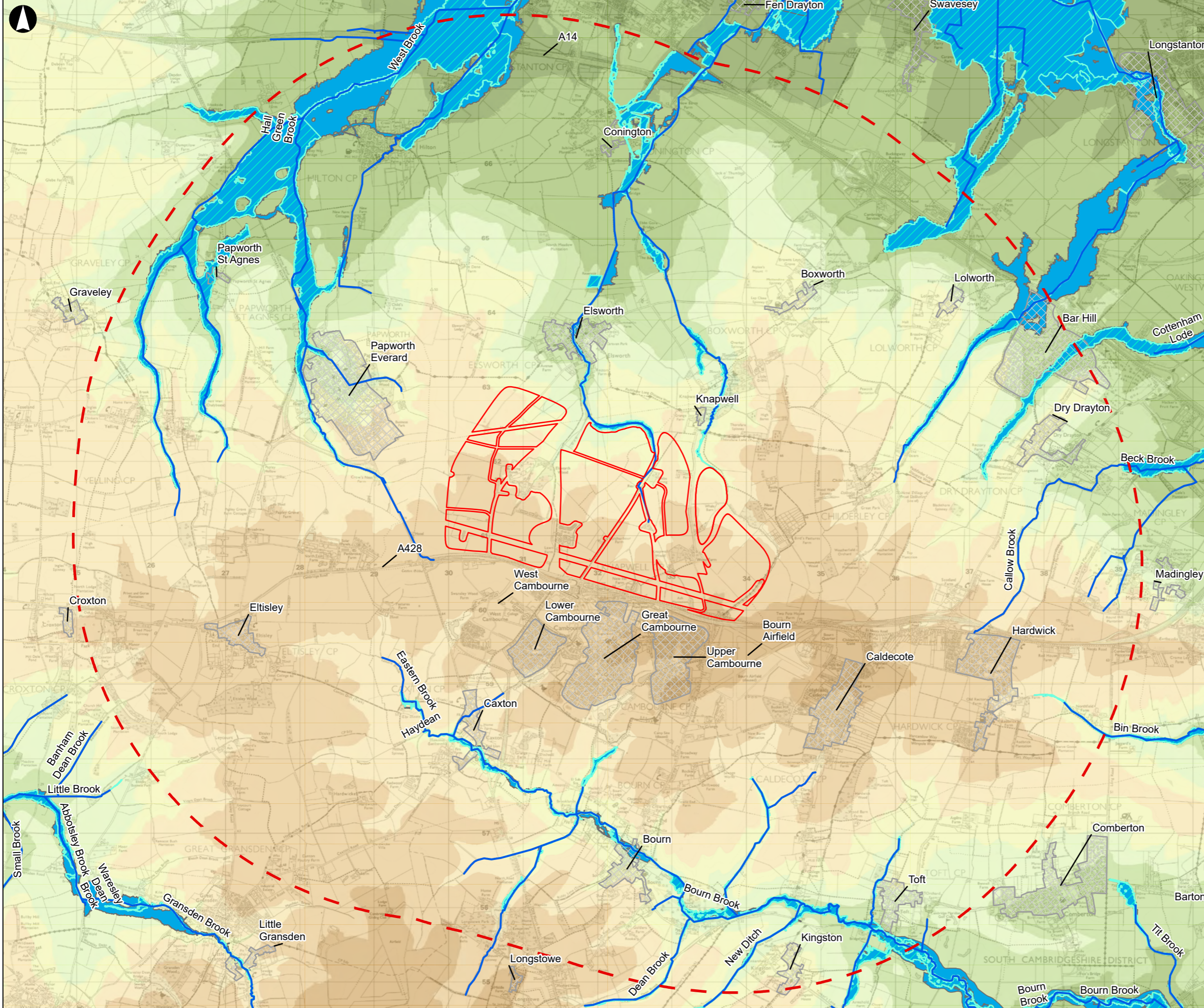


Project Title
**Camboorne Growth Strategy
Programme**

Drawing Title
**Figure 1 - Spatial Framework Block
Typologies**

Scale at A3
1:50,000
 Role
GEN
 Suitability
Regulation 19 Local Plan consultation
 Arup Job No
307292-00
 Drawing Number

Rev	P01
-----	-----



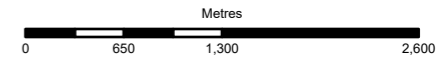
Legend

- Spatial Framework Development Plot Boundaries (Stage 1)
- 5km Site Boundary Buffer
- Existing Settlement Boundary
- Flood Zone 3
- Flood Zone 2
- Watercourses

Elevation (m AOD)

- <=10
- 10 - 20
- 20 - 30
- 30 - 40
- 40 - 50
- 50 - 60
- 60 - 70
- 70 - 80
- 80 - 90

Coordinate System: British National Grid
 Contains Ordnance Survey data © Crown copyright and database right 2025
 EWR Route and Stations: MWJV 2024 © OpenStreetMap contributors



P01	02/07/26	CO	ZO	SJ
Rev	Date	By	Chkd	Appd

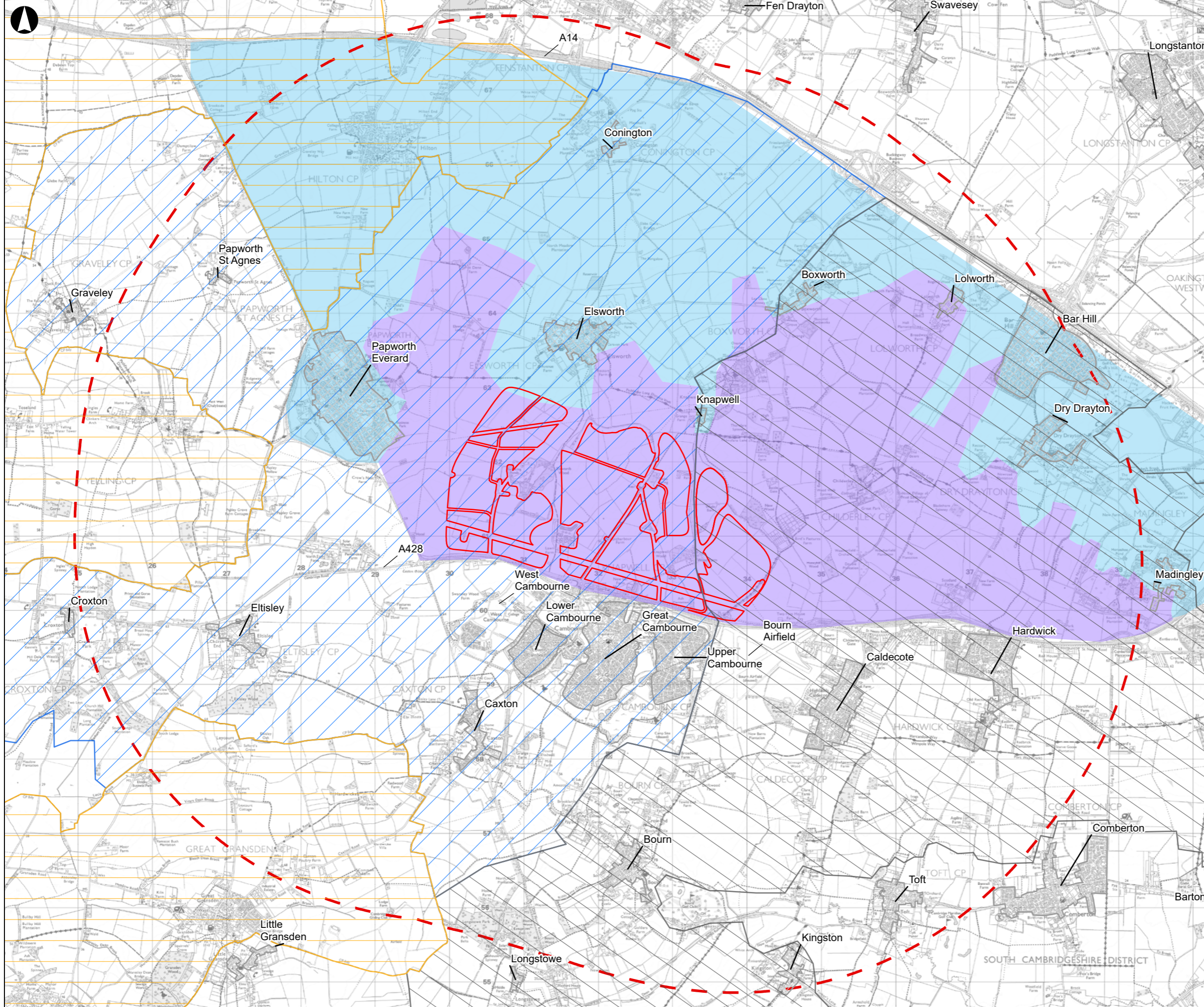
ARUP
 8 Fitzroy Street
 London W1T 4BJ
 T +44 117 976 5432
 www.arup.com

Client:
**GREATER CAMBRIDGE
 SHARED PLANNING**

Project Title
**Camboorne Growth Strategy
 Programme**

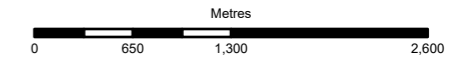
Drawing Title
**Figure 3 - Topography and
 Hydrology**

Scale at A3
1:50,000
 Role
GEN
 Suitability
Regulation 19 Local Plan consultation
 Arup Job No **307292-00** Rev **P01**
 Drawing Number



- Legend**
- Spatial Framework Development Plot Boundaries (Stage 1)
 - 5km Study Area Buffer
 - Existing Settlement Boundary
 - Landscape Character**
 - Camboorne Claylands Ridge
 - Claylands Valleys and Villages
 - Croxton to Conington Wooded Claylands
 - Lolworth to Longstowe Wooded Claylands
 - South East Claylands

Coordinate System: British National Grid
 Contains Ordnance Survey data © Crown copyright and database right 2025
 EWR Route and Stations: MWJ 2024 © OpenStreetMap contributors



P01	01/07/26	CO	ZO	SJ
Rev	Date	By	Chkd	Appd



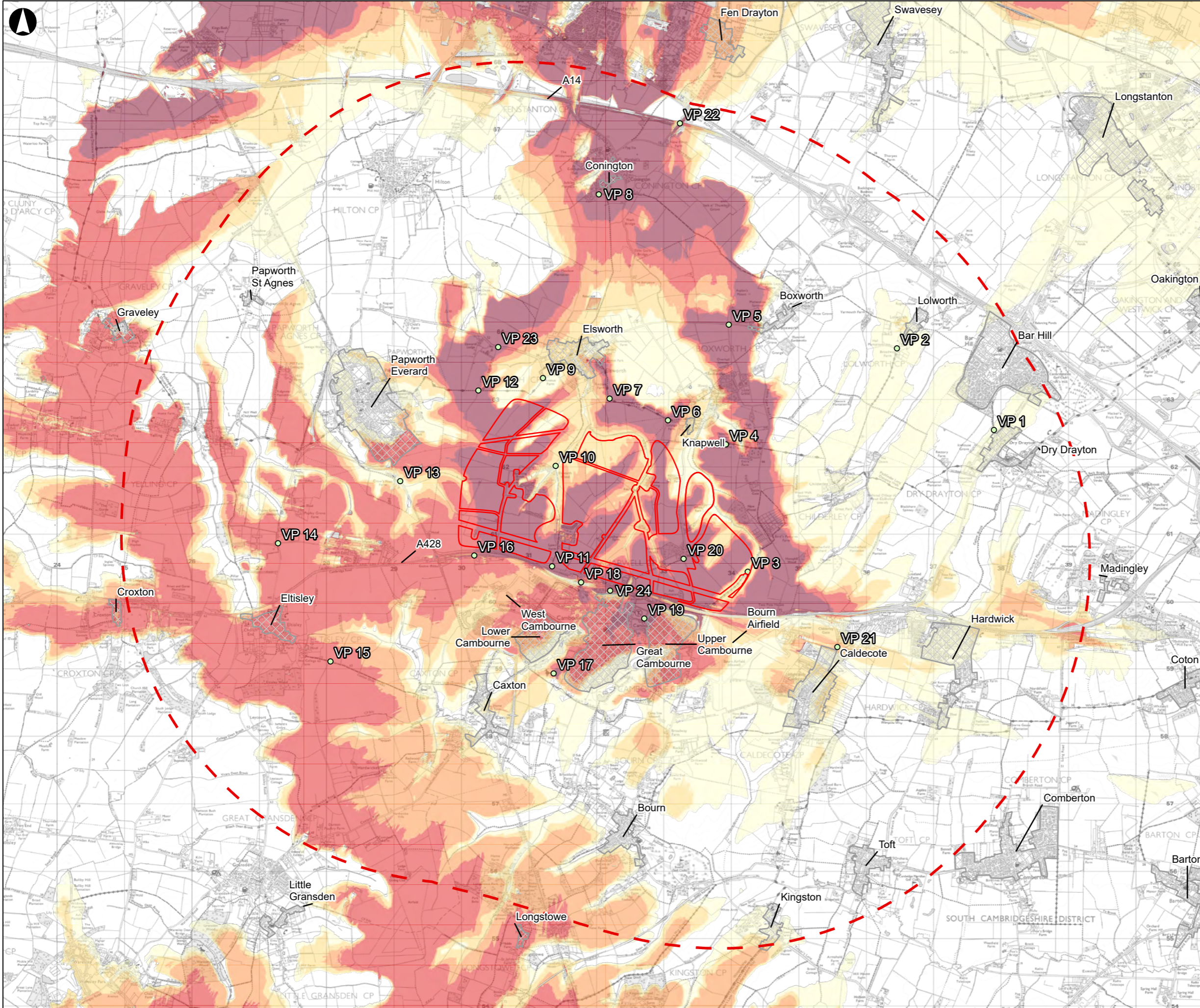
8 Fitzroy Street
 London W1T 4BJ
 T +44 117 976 5432
 www.arup.com



Project Title
Camboorne Growth Strategy Programme

Drawing Title
Figure 4 - Landscape Character Areas

Scale at A3
1:50,000
 Role
GEN
 Suitability
Regulation 19 Local Plan consultation
 Arup Job No
307292-00
 Drawing Number
 Rev
P01



- Legend**
- Spatial Framework Development Plot Boundaries (Stage 1)
 - 5km Study Area Buffer
 - Existing Settlement Boundary

Representative Viewpoints
○

- Zone of Theoretical Visibility (ZTV)**
- 1 - 17
 - 18 - 37
 - 38 - 57
 - 58 - 76
 - 77 - 91

Note: The values above indicate the number of reference points within the model that could be visible from a given location. Where the map is white, this indicates that there would be no visibility of the Proposed Development.

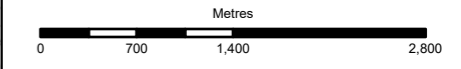
This viewshed analysis was conducted using the EA 1m Digital Terrain Model (DTM) along with an initial building masterplan.

To streamline processing, the centre-point of each parcel was used as a proxy location for groups of buildings. While this approach reduces the amount of processing and analysis required it may not accurately represent the true position of structures within each parcel. The analysis is based on 1-meter resolution data, which provides a general representation of terrain and surface features but may exclude finer details.

Given these assumptions and simplifications, the viewshed results should be considered indicative rather than definitive. This analysis is intended for general planning and visualisation purposes only and should not be used as a substitute for detailed, site-specific assessments or engineering-grade evaluations. Further Landscape Visual Assessments and Landscape Visual Impact Assessments are recommended to enhance these findings.

Coordinate System: British National Grid

Contains Ordnance Survey data © Crown copyright and database right 2025
EWR Route and Stations: MWJV 2024 © OpenStreetMap contributors



P01	02/07/26	CO	ZO	SJ
Rev	Date	By	Chkd	Appd



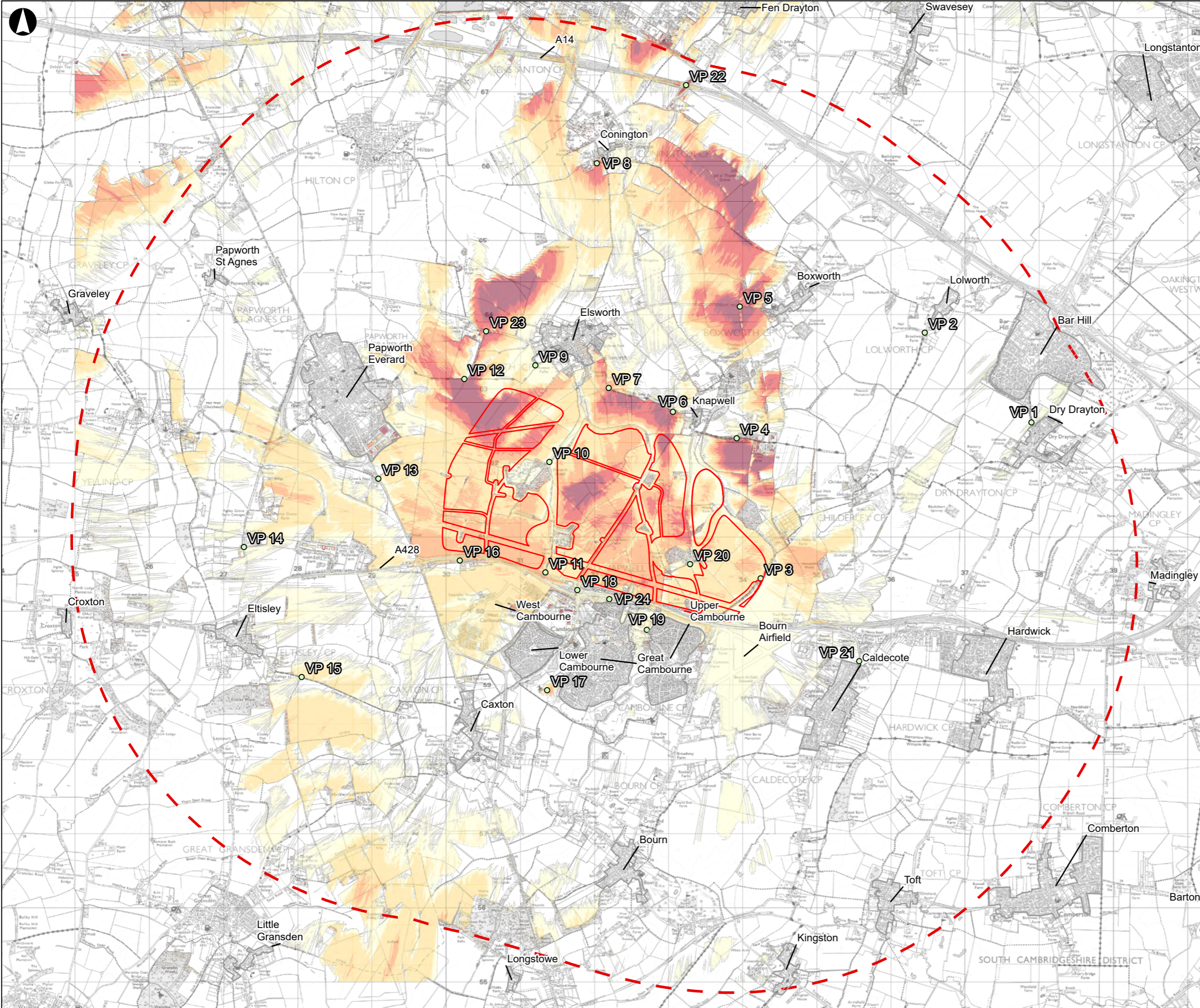
8 Fitzroy Street
London W1T 4BJ
T +44 117 976 5432
www.arup.com



Project Title
Cambourne Growth Strategy Programme

Drawing Title
Figure 5 - Zone of Theoretical Visibility (bare earth)

Scale at A3
1:55,000
Role
GEN
Suitability
Regulation 19 Local Plan consultation
Arup Job No
307292-00
Drawing Number
P01



- Legend**
- Spatial Framework Development Plot Boundaries (Stage 1)
 - 5km Study Area Buffer
 - Existing Settlement Boundary

Representative Viewpoints

-

- Zone of Theoretical Visibility (ZTV)
- 1 - 7
 - 8 - 22
 - 23 - 36
 - 37 - 51
 - 52 - 85

Note: The values above indicate the number of reference points within the model that could be visible from a given location. Where the map is white, this indicates that there would be no visibility of the Proposed Development.

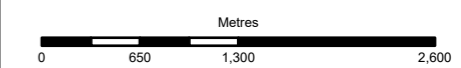
This viewshed analysis was conducted using the EA 1m Digital Surface Model (DSM) along with an initial building masterplan.

To streamline processing, the centre-point of each parcel was used as a proxy location for groups of buildings. While this approach reduces the amount of processing and analysis required it may not accurately represent the true position of structures within each parcel. The analysis is based on 1-meter resolution data, which provides a general representation of terrain and surface features but may exclude finer details.

Given these assumptions and simplifications, the viewshed results should be considered indicative rather than definitive. This analysis is intended for general planning and visualisation purposes only and should not be used as a substitute for detailed, site-specific assessments or engineering-grade evaluations. Further Landscape Visual Assessments and Landscape Visual Impact Assessments are recommended to enhance these findings.

Coordinate System: British National Grid

Contains Ordnance Survey data © Crown copyright and database right 2025
EWR Route and Stations: MWJV 2024 © OpenStreetMap contributors



Rev	Date	By	Chkd	Appd
P01	02/07/26	CO	ZO	SJ



8 Fitzroy Street
London W1T 4BJ
T +44 117 976 5432
www.arup.com



Project Title
Cambourne Growth Strategy Programme

Drawing Title
Figure 6 - Zone of Theoretical Visibility (with screening)

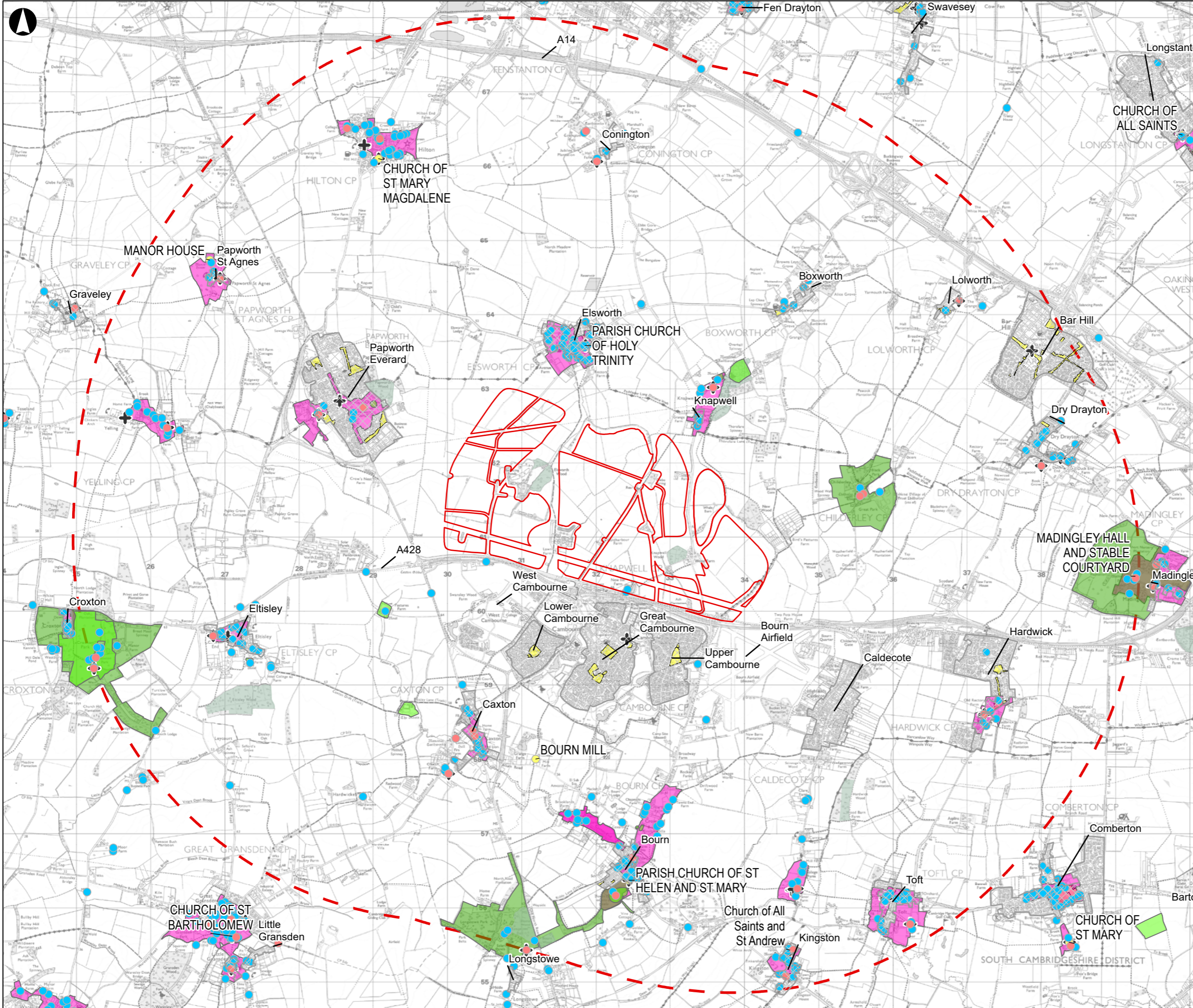
Scale at A3
1:50,000
Role
GEN

Suitability
Regulation 19 Local Plan consultation

Arup Job No
307292-02

Rev P01

Drawing Number



- Legend**
- Spatial Framework Development Plot Boundaries (Stage 1)
 - 5km Study Area Buffer
 - Existing Settlement Boundary
 - Ancient Woodland
 - Historic Parks and Garden
 - Scheduled Ancient Monument
 - Conservation Area
 - Protected Village Amenity Area
 - + Place Of Worship
- Listed Buildings
- Grade
- I
 - II
 - II*

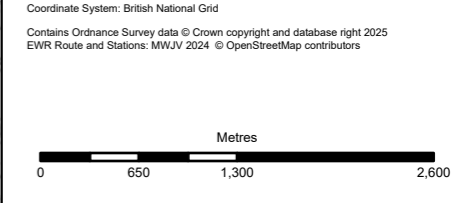
Coordinate System: British National Grid

Contains Ordnance Survey data © Crown copyright and database right 2025
 EWR Route and Stations: MWJV 2024 © OpenStreetMap contributors

Metres				
0	650	1,300	2,600	

P01	02/07/26	CO	ZO	SJ
Rev	Date	By	Chkd	Appd

8 Fitzroy Street
 London W1T 4BJ
 T +44 117 976 5432
 www.arup.com



Client:

**GREATER CAMBRIDGE
 SHARED PLANNING**

Project Title

**Camboorne Growth Strategy
 Programme**

Drawing Title

**Figure 7 - Designations Relevant
 Landscape and Visual Amenity**

Scale at A3

1:50,000

Role

GEN

Suitability

Regulation 19 Local Plan consultation

Arup Job No	Rev
307292-00	P01
Drawing Number	