

## Addendum to Heritage Impact Assessment

This document is an addendum to the Heritage Impact Assessment (HIA) undertaken for the proposed allocation 'Cambourne North'. This addendum was produced to provide an update to the HIA due to minor boundary changes and the receipt of formal representations from Historic England. The boundary changes and relevant representations are summarised below, and any subsequent changes to the HIA are described.

### Boundary Changes and Draft Spatial Framework

#### Summary

The allocation abuts the A428 to the north of the existing settlement of Cambourne. The original boundary for the developable area covered a series of parcels that extended west towards Caxton Gibbet, east towards Lark Rise, and north close to Knapwell and Elsworth. This was surrounded by a Strategic Enhancement Area (SEA) which is a non-developable area intended mainly for green infrastructure.

The boundary for the allocation has been adjusted to remove part of the developable area that approaches Elsworth, but widens the allocation slightly to the west. The updated boundary is not separated into parcels. The SEA boundary has been adjusted to cover the area previously marked for development approaching Elsworth, and has been subject to minor boundary extensions to the west, and minor reductions and extensions to the north and east.

#### Updates

Following these boundary changes, the potential risk (pre-mitigation) to the Elsworth Conservation Area identified in the HIA can be reduced to 'Low' as the allocation has shifted almost 500 metres south and has been replaced with the SEA which significantly reduces the potential for urbanising effects. The recommendations for mitigation do not require updating.

Additionally, discussions with Historic England and the Cambridgeshire County Senior Archaeologist included a review of identified areas of potential high archaeological significance within the allocation, and concluded that these should be considered of equivalent significance to Scheduled Monuments and so should be treated accordingly. As such, the HIA should be read with the following additions:

#### **Designated and significant non-designated heritage assets – Site**

##### *Historic Environment Record*

Areas of potential high archaeological significance have been identified within the east and south of the site, representing Roman, Iron Age and medieval remains. Recommended by Historic England and the Cambridgeshire County Archaeologist, these areas should be considered of equivalent significance to Scheduled Monuments.

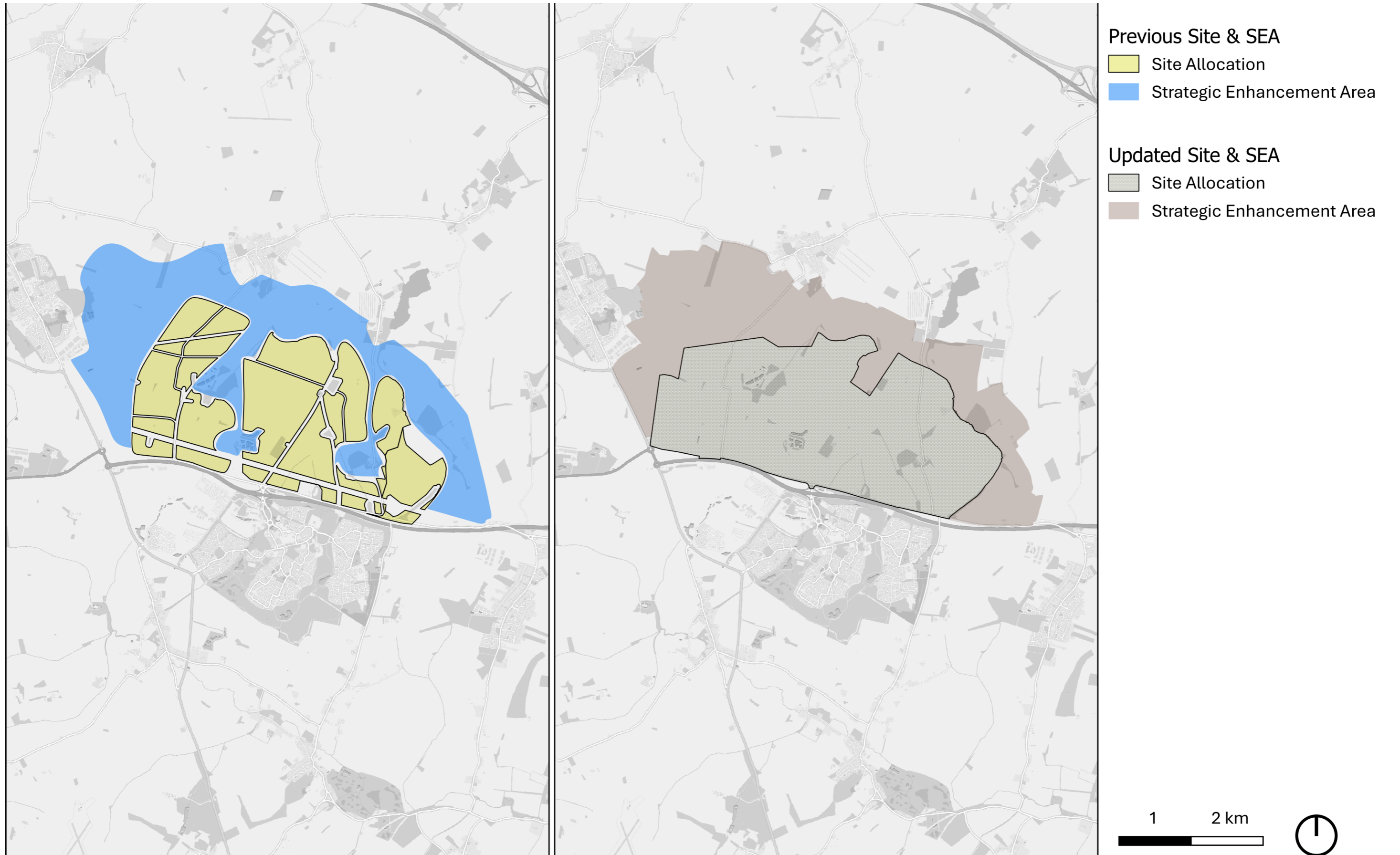
## **Mitigation and opportunities for enhancement**

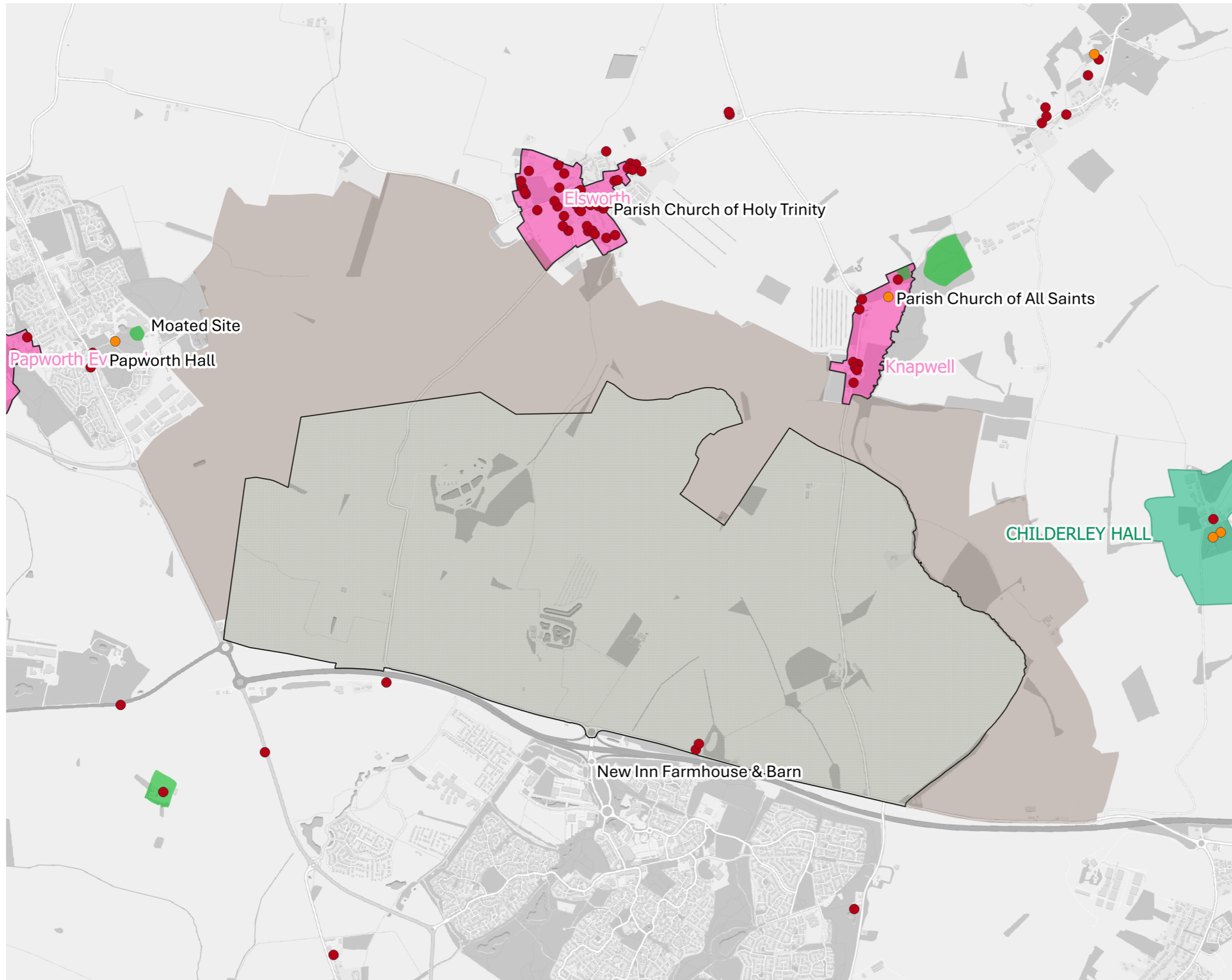
### *Recommendations related to archaeological remains*

Areas of potential high archaeological significance should be given the same consideration and protection as Scheduled Monuments. As such they should not be subject to development, and site layout should accommodate physical conservation of remains.

A desk-based assessment should be undertaken to inform the masterplanning process. It is noted that field investigations are currently underway by East West Rail Co. in the south of the site as part of the DCO process for the new railway line connecting Cambourne and Cambridge. The results of this investigation may inform a future listing review.

In addition, the Recommended Mitigation Plan has been updated to reflect the boundary changes.

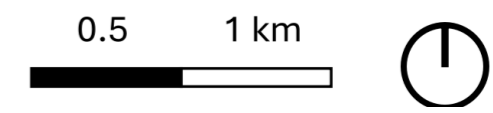


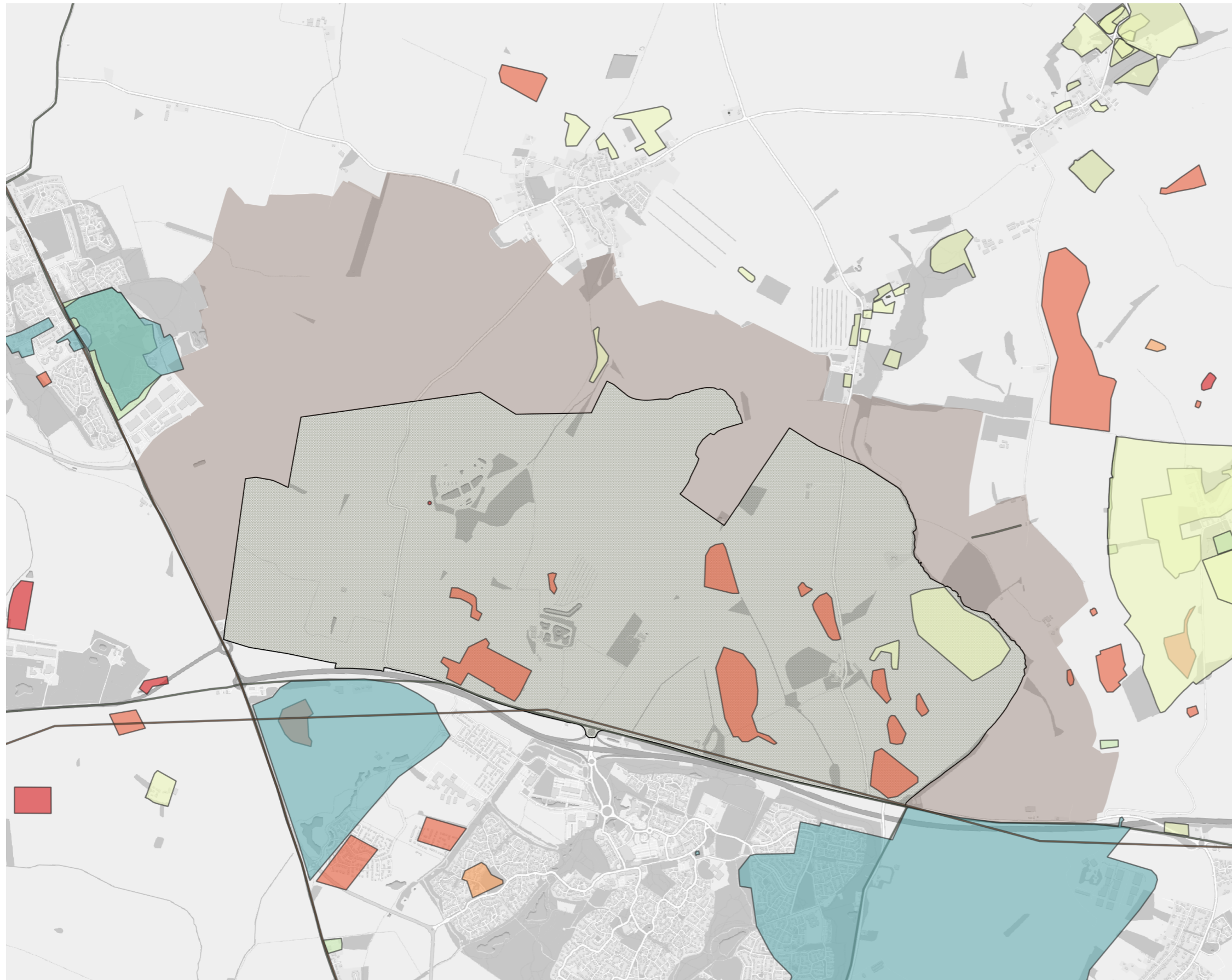


- Site Allocation
- Strategic Enhancement Area

**Heritage Assets**

- Grade I Listed Buildings
- Grade II\* Listed Buildings
- Grade II Listed Buildings
- Conservation Area
- Registered Park and Garden
- Scheduled Monument



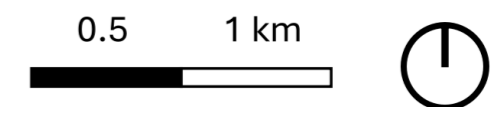


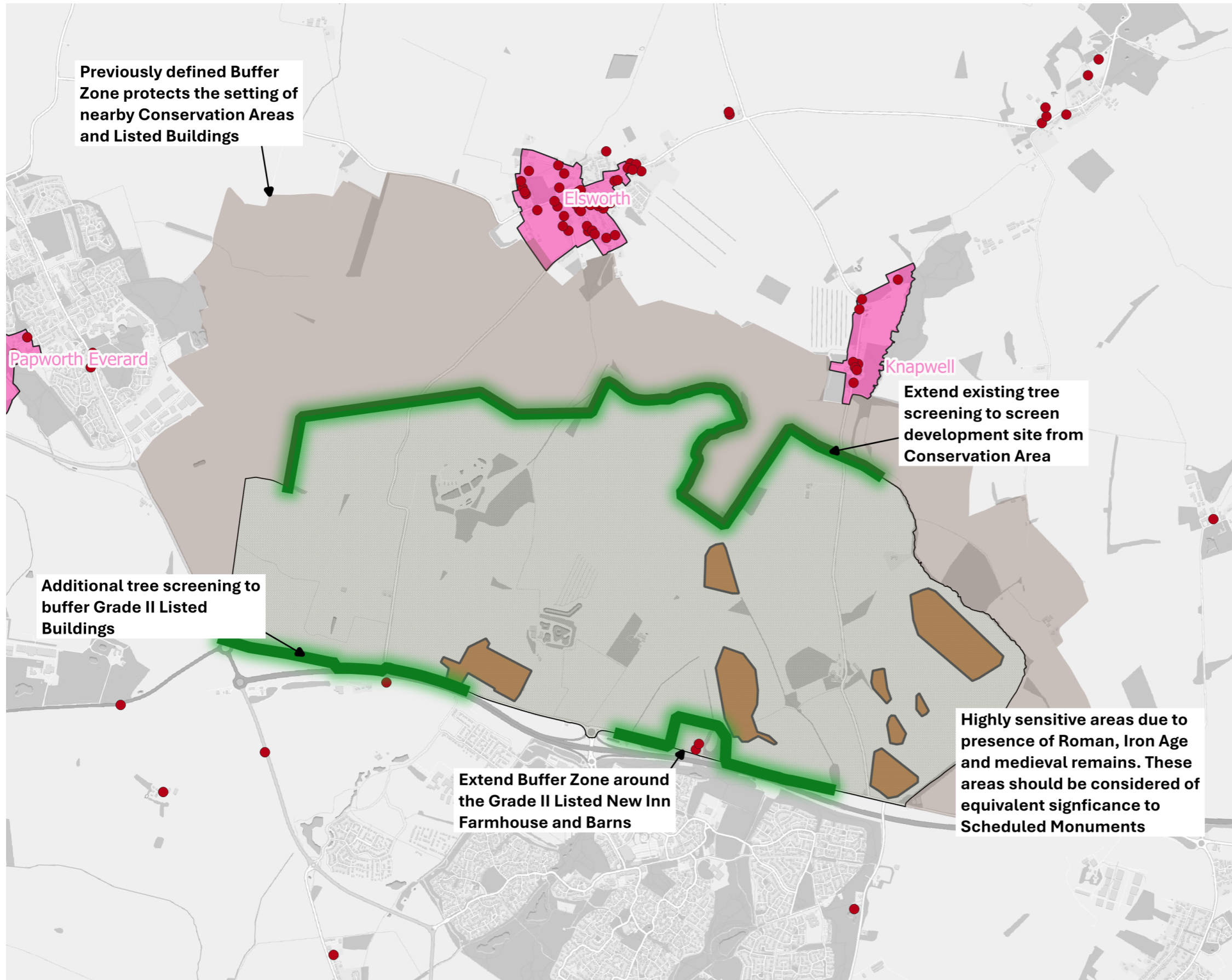
- Site Allocation
- Strategic Enhancement Area

**Heritage Assets**

**Historic Environment Record**

- Prehistoric
- Iron Age - Roman
- Roman
- Romano-British
- Early Medieval
- Medieval
- Post Medieval
- Modern
- Undated





- Site Allocation
- Strategic Enhancement Area

**Heritage Assets**

- Grade II Listed Buildings
- Conservation Area
- Area of potential high archaeological significance

**Recommended Mitigation**

- Tree Screening

