

Garages between 20 St. Matthews Street and Blue Moon Public House, Cambridge



A map of Garages between 20 St. Matthews Street and Blue Moon Public House, Cambridge

Site information	-
Site ID	115519
HELAA Site ID	44108
Suitable Site Area (ha)	0.09
Ward/Parish	Petersfield
Greenfield or Previously Developed?	Previously Developed Land
Category of site	Densification of existing urban areas
Category of settlement	Cambridge City
Current use(s)	
Proposed development	Residential
Proposed employment floorspace (m ²)	0
Proposed residential capacity	5
Suitability	-
Adopted Development Plan Policies RAG 2026	Green

Adopted Development Plan Policies Comment 2026	Development of the site is compatible and consistent with Development Plan policies and allocations.
Flood Risk RAG Assessment 2026	Green
Flood Risk Officer Comment 2026	Flood Zones: Site is wholly within Flood Zone 1. Climate Change: Site is not within a climate-change-adjusted flood zone. Surface Water Flood Risk: None.
Flood Risk RAG Assessment 2025	Amber
Flood Risk Officer Comment 2025	Flood Zone: Wholly in Flood Zone 1. Surface Water Flooding: None
Flood Risk RAG Assessment 2023	
Flood Risk Officer Comment 2023	
Flood Risk RAG Assessment 2021	Amber
Flood Risk Officer Comment 2021	The site contains areas at high, or medium risk from surface water flooding and/or the site contains some land in Flood Zones 2 and/or 3 but there is sufficient land in Flood Zone 1 to accommodate at least 5 additional dwellings or an increase of 500 square metres of employment floorspace.
Landscape RAG Assessment 2026	
Landscape Comment 2026	
Landscape RAG Assessment 2025	
Landscape Comment 2025	
Landscape RAG Assessment 2023	
Landscape Comment 2023	
Landscape RAG Assessment 2021	Amber
Landscape Comment 2021	The site is currently a garage and parking site. Any development on the site should seek to integrate landscape space and trees with adequate space for landscape buffers. Development scale should be context driven and retain the domestic, though dense, scale of the local area.
Biodiversity and Geodiversity RAG Assessment 2026	
Biodiversity and Geodiversity Officer Comments 2026	
Biodiversity and Geodiversity Guideline Comments 2026	

Biodiversity and Geodiversity RAG Assessment 2025	
Biodiversity and Geodiversity Officer Comments 2025	
Biodiversity and Geodiversity Guideline Comments 2025	
Biodiversity and Geodiversity RAG Assessment 2023	
Biodiversity and Geodiversity Officer Comments 2023	
Biodiversity and Geodiversity Guideline Comments 2023	
Biodiversity and Geodiversity RAG Assessment 2021	Green
Biodiversity and Geodiversity Officer Comments 2021	All residential developments will require an assessment of recreational impacts on nearby SSSIs. Applications may find provision of a 10% net gain in biodiversity difficult within their red line boundaries and may need to find off-site compensation to comply with up-coming National legislation and developing local policies.
Biodiversity and Geodiversity Guideline Comments 2021	Development of the site would not have a detrimental impact on any designated site, or those with a regional or local protection.
Policy RAG Rating 2026	Green
Policy Officer Comment 2026	The site is wholly outside of protected open space. Detrimental open space impacts are not anticipated.
Policy RAG Rating 2025	
Policy Officer Comment 2025	
Policy RAG Rating 2023	
Policy Officer Comment 2023	
Policy RAG Rating 2021	Green
Policy Officer Comments 2021	Site is not on protected open space designation. Any impact of the proposed development could be reasonably mitigated or compensated.
Historic Environment RAG Assessment 2026	
Historic Environment Comments 2026	
Historic Environment RAG Assessment 2025	
Historic Environment Comments 2025	
Historic Environment RAG Assessment 2023	

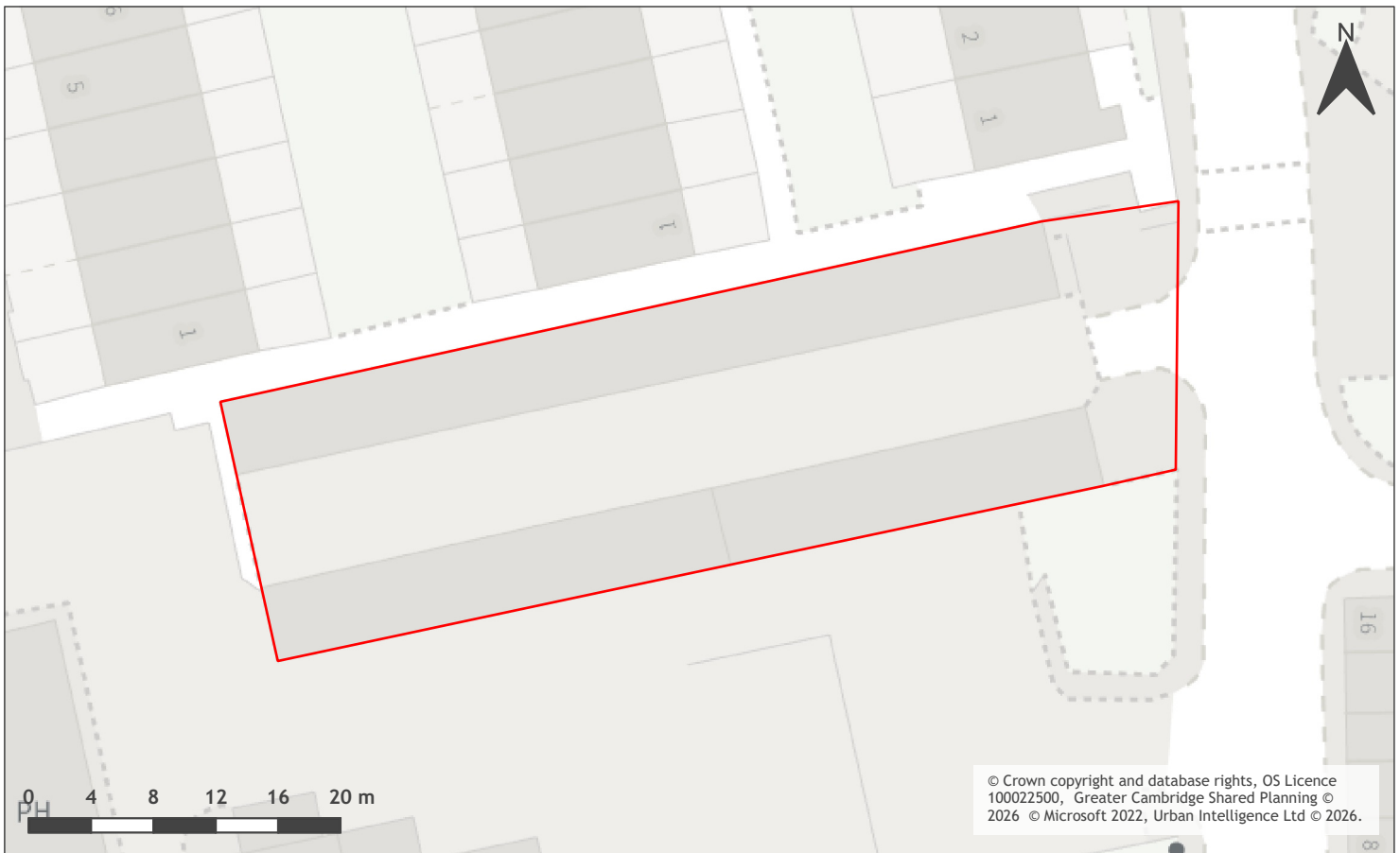
Historic Environment Comments 2023	
Historic Environment RAG Assessment 2021	Green
Historic Environment Comments 2021	Development of the site would have either a neutral or positive impact, but importantly not have a detrimental impact on any designated or non-designated heritage assets.
Archaeology RAG Assessment 2026	
Archaeology Officer Comment 2026	
Archaeology RAG Assessment 2025	
Archaeology Officer Comment 2025	
Archaeology RAG Assessment 2023	
Archaeology Officer Comment 2023	
Archaeology RAG Assessment 2021	Green
Archaeology Officer Comment 2021	No significant archaeology likely to survive in this area
Accessibility RAG Assessment	Green
Accessibility Comment	Good accessibility to key local services, transport, and employment opportunities.
Site Access RAG Assessment 2026	
Site Access Officer Comment 2026	
Site Access RAG Assessment 2025	
Site Access Officer Comment 2025	
Site Access RAG Assessment 2023	
Site Access Officer Comment 2023	
Site Access RAG Assessment 2021	Red
Site Access Officer Comment 2021	The proposed site does not to have a direct link to the adopted public highway.
Transport and Roads RAG Assessment 2026	
Transport and Roads Guideline Comments 2026	
Transport and Roads RAG Assessment 2025	
Transport and Roads Guideline Comments 2025	

Transport and Roads RAG Assessment 2023	
Transport and Roads Guideline Comments 2023	
Transport and Roads RAG Assessment 2021	Green
Transport and Roads Guideline Comments 2021	Development of the site will not have a detrimental impact on the functioning of trunk roads and/or local roads.
Noise, Vibration, Odour and Light Pollution RAG Assessment 2026	
Noise, Vibration, Odour and Light Pollution Guideline Comments 2026	
Noise, Vibration, Odour and Light Pollution RAG Assessment 2025	
Noise, Vibration, Odour and Light Pollution Guideline Comments 2025	
Noise, Vibration, Odour and Light Pollution RAG Assessment 2023	
Noise, Vibration, Odour and Light Pollution Guideline Comments 2023	
Noise, Vibration, Odour and Light Pollution RAG Assessment 2021	Amber
Noise, Vibration, Odour and Light Pollution Guideline Comments 2021	The site is capable of being developed to provide healthy internal and external environments in regard to noise / vibration/ odour/ Light Pollution after careful site layout, design and mitigation.
AQMA RAG Assessment 2026	
Air Quality Officer Comment 2026	
AQMA RAG Assessment 2025	
Air Quality Officer Comment 2025	
AQMA RAG Assessment 2023	
Air Quality Officer Comment 2023	
AQMA RAG Assessment 2021	Amber
Air Quality Officer Comment 2021	Site lies within an AQMA
Contaminated Land RAG Assessment 2026	

Contaminated Land Officer Comments 2026	
Contaminated Land RAG Assessment 2025	
Contaminated Land Officer Comments 2025	
Contaminated Land RAG Assessment 2023	
Contaminated Land Officer Comments 2023	
Contaminated Land RAG Assessment 2021	Amber
Contaminated Land Officer Comments 2021	Potential for historic contamination, conditions required.
Overall Suitability Score	Red
Further constraints	-
Agricultural Land Classification Grade 1 (% overlap)	0
Agricultural Land Classification Grade 2 (% overlap)	0
Agricultural Land Classification Grade 3 (% overlap)	0
Agricultural Land Classification Grade 4 (% overlap)	0
Agricultural Land Classification Non Agricultural (% overlap)	0
Agricultural Land Classification Urban (% overlap)	100.00
Source Protection Zone (% overlap)	0
Highways England Zones	Cambridge
Available	-
Is the site controlled by a developer or landowner who has expressed an intention to develop?	The site was submitted by the landowner and/or site promoter who has confirmed that the site is available for development in the timescales indicated.
Are there known legal or ownership impediments to development?	No
Is there planning permission to develop the site?	No relevant recent planning history
When will the site be available for development?	0-5 Years

Available RAG	Green
Achievable	-
Is there a reasonable prospect that the site will be developed?	The land has been promoted by the landowner and or developer and is known to be available for development. The site has a low existing use value and residential development is likely to be economically viable at an appropriate density.
Achievable RAG	Green
Capacity	-
Prevailing Density (weighted) (dwellings per ha)	129
Residential capacity at prevailing density	12
Estimated employment space (m2)	
Estimated start date	0-5 Years
Estimated annual build-out rate (pa)	40-75
Development completion timescales (years)	0-5 Years

Garages between 20 St. Matthews Street and the Blue Moon Public House, Cambridge



A map of Garages between 20 St. Matthews Street and the Blue Moon Public House, Cambridge

Site information	-
Site ID	115520
HELAA Site ID	44108a
Suitable Site Area (ha)	0.1
Ward/Parish	Petersfield
Greenfield or Previously Developed?	Previously Developed Land
Category of site	Densification of existing urban areas
Category of settlement	Cambridge City
Current use(s)	
Proposed development	Residential
Proposed employment floorspace (m2)	0
Proposed residential capacity	12
Suitability	-
Adopted Development Plan Policies RAG 2026	Green

Adopted Development Plan Policies Comment 2026	Development of the site is compatible and consistent with Development Plan policies and allocations.
Flood Risk RAG Assessment 2026	Amber
Flood Risk Officer Comment 2026	Flood Zones: Site is wholly within Flood Zone 1. Climate Change: Site is not within a climate-change-adjusted flood zone. Surface Water: 1% lies in a 1-in-1,000-year event.
Flood Risk RAG Assessment 2025	Amber
Flood Risk Officer Comment 2025	Flood Zone: Wholly in Flood Zone 1. Surface Water Flooding: 1% lies in a 1 in 1000 year event
Flood Risk RAG Assessment 2023	
Flood Risk Officer Comment 2023	
Flood Risk RAG Assessment 2021	Amber
Flood Risk Officer Comment 2021	The site contains areas at high, or medium risk from surface water flooding and/or the site contains some land in Flood Zones 2 and/or 3 but there is sufficient land in Flood Zone 1 to accommodate at least 5 additional dwellings or an increase of 500 square metres of employment floorspace.
Landscape RAG Assessment 2026	
Landscape Comment 2026	
Landscape RAG Assessment 2025	
Landscape Comment 2025	
Landscape RAG Assessment 2023	
Landscape Comment 2023	
Landscape RAG Assessment 2021	Amber
Landscape Comment 2021	The site is currently a garage and parking site. Any development on the site should seek to integrate landscape space and trees with adequate space for landscape buffers. Development scale should be context driven and retain the domestic, though dense, scale of the local area.
Biodiversity and Geodiversity RAG Assessment 2026	
Biodiversity and Geodiversity Officer Comments 2026	
Biodiversity and Geodiversity Guideline Comments 2026	

Biodiversity and Geodiversity RAG Assessment 2025	
Biodiversity and Geodiversity Officer Comments 2025	
Biodiversity and Geodiversity Guideline Comments 2025	
Biodiversity and Geodiversity RAG Assessment 2023	
Biodiversity and Geodiversity Officer Comments 2023	
Biodiversity and Geodiversity Guideline Comments 2023	
Biodiversity and Geodiversity RAG Assessment 2021	Green
Biodiversity and Geodiversity Officer Comments 2021	All residential developments will require an assessment of recreational impacts on nearby SSSIs. Applications may find provision of a 10% net gain in biodiversity difficult within their red line boundaries and may need to find off-site compensation to comply with up-coming National legislation and developing local policies.
Biodiversity and Geodiversity Guideline Comments 2021	Development of the site would not have a detrimental impact on any designated site, or those with a regional or local protection.
Policy RAG Rating 2026	Green
Policy Officer Comment 2026	The site is wholly outside of protected open space. Detrimental open space impacts are not anticipated.
Policy RAG Rating 2025	
Policy Officer Comment 2025	
Policy RAG Rating 2023	
Policy Officer Comment 2023	
Policy RAG Rating 2021	Green
Policy Officer Comments 2021	Site is not on protected open space designation. Any impact of the proposed development could be reasonably mitigated or compensated.
Historic Environment RAG Assessment 2026	
Historic Environment Comments 2026	
Historic Environment RAG Assessment 2025	
Historic Environment Comments 2025	
Historic Environment RAG Assessment 2023	

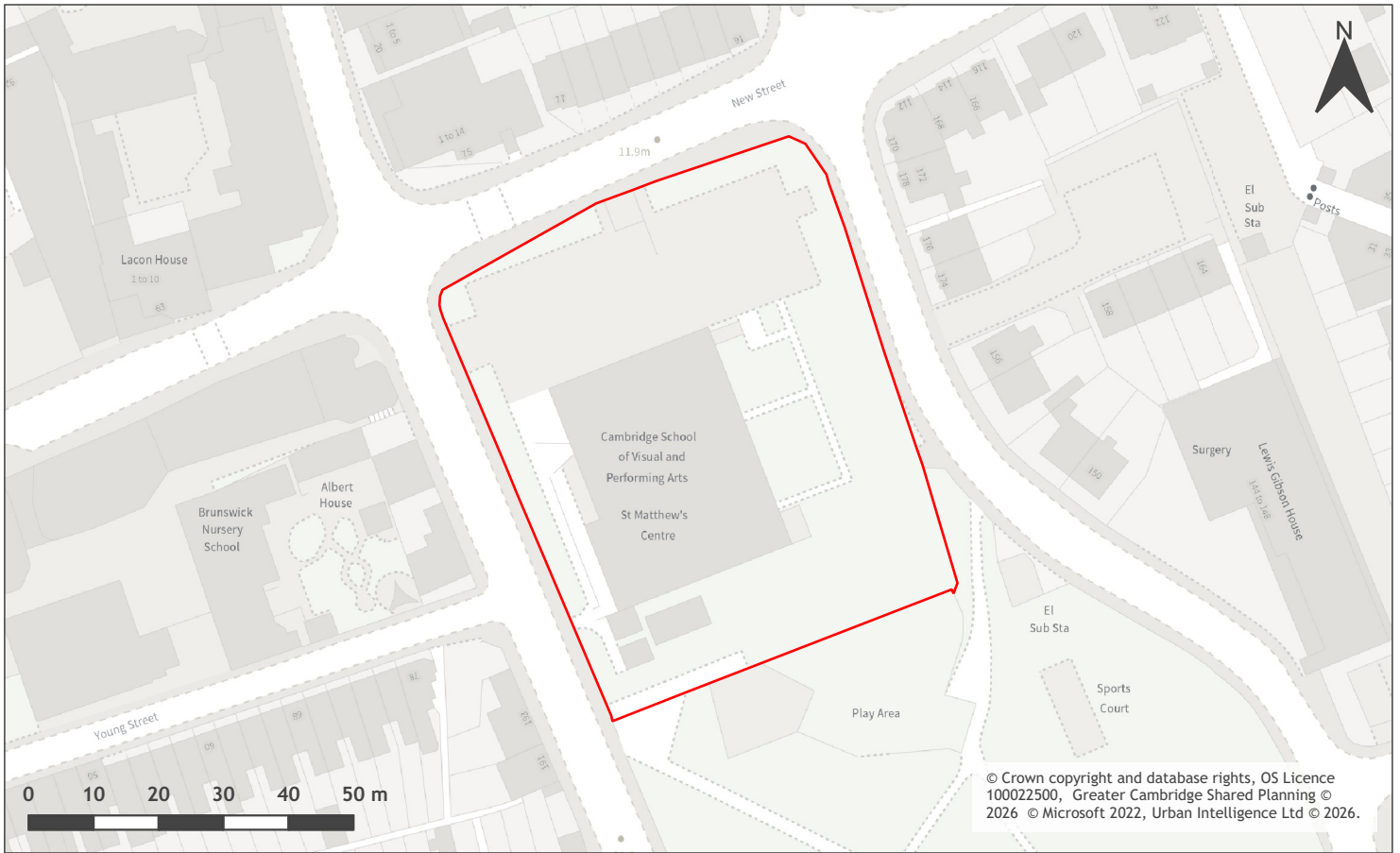
Historic Environment Comments 2023	
Historic Environment RAG Assessment 2021	Green
Historic Environment Comments 2021	Development of the site would have either a neutral or positive impact, but importantly not have a detrimental impact on any designated or non-designated heritage assets.
Archaeology RAG Assessment 2026	
Archaeology Officer Comment 2026	
Archaeology RAG Assessment 2025	
Archaeology Officer Comment 2025	
Archaeology RAG Assessment 2023	
Archaeology Officer Comment 2023	
Archaeology RAG Assessment 2021	Green
Archaeology Officer Comment 2021	No significant archaeology likely to survive in this area
Accessibility RAG Assessment	Green
Accessibility Comment	Good accessibility to key local services, transport, and employment opportunities.
Site Access RAG Assessment 2026	
Site Access Officer Comment 2026	
Site Access RAG Assessment 2025	
Site Access Officer Comment 2025	
Site Access RAG Assessment 2023	
Site Access Officer Comment 2023	
Site Access RAG Assessment 2021	Amber
Site Access Officer Comment 2021	The proposed site is acceptable in principle subject to detailed design.
Transport and Roads RAG Assessment 2026	
Transport and Roads Guideline Comments 2026	
Transport and Roads RAG Assessment 2025	
Transport and Roads Guideline Comments 2025	

Transport and Roads RAG Assessment 2023	
Transport and Roads Guideline Comments 2023	
Transport and Roads RAG Assessment 2021	Green
Transport and Roads Guideline Comments 2021	Development of the site will not have a detrimental impact on the functioning of trunk roads and/or local roads.
Noise, Vibration, Odour and Light Pollution RAG Assessment 2026	
Noise, Vibration, Odour and Light Pollution Guideline Comments 2026	
Noise, Vibration, Odour and Light Pollution RAG Assessment 2025	
Noise, Vibration, Odour and Light Pollution Guideline Comments 2025	
Noise, Vibration, Odour and Light Pollution RAG Assessment 2023	
Noise, Vibration, Odour and Light Pollution Guideline Comments 2023	
Noise, Vibration, Odour and Light Pollution RAG Assessment 2021	Green
Noise, Vibration, Odour and Light Pollution Guideline Comments 2021	The site is capable of being developed to provide healthy internal and external environments in regard to noise / vibration/ odour/ Light Pollution after careful site layout, design and mitigation.
AQMA RAG Assessment 2026	
Air Quality Officer Comment 2026	
AQMA RAG Assessment 2025	
Air Quality Officer Comment 2025	
AQMA RAG Assessment 2023	
Air Quality Officer Comment 2023	
AQMA RAG Assessment 2021	Amber
Air Quality Officer Comment 2021	Site lies within an AQMA. Will require inherent / intrinsic designed in AQ mitigation.
Contaminated Land RAG Assessment 2026	

Contaminated Land Officer Comments 2026	
Contaminated Land RAG Assessment 2025	
Contaminated Land Officer Comments 2025	
Contaminated Land RAG Assessment 2023	
Contaminated Land Officer Comments 2023	
Contaminated Land RAG Assessment 2021	Amber
Contaminated Land Officer Comments 2021	Brownfield site, contamination expected, conditions required
Overall Suitability Score	Amber
Further constraints	-
Agricultural Land Classification Grade 1 (% overlap)	0
Agricultural Land Classification Grade 2 (% overlap)	0
Agricultural Land Classification Grade 3 (% overlap)	0
Agricultural Land Classification Grade 4 (% overlap)	0
Agricultural Land Classification Non Agricultural (% overlap)	0
Agricultural Land Classification Urban (% overlap)	100.00
Source Protection Zone (% overlap)	0
Highways England Zones	Cambridge
Available	-
Is the site controlled by a developer or landowner who has expressed an intention to develop?	115520 - Available - amend to read: The site is owned by Cambridge City Council who have confirmed that the site is not available for development in the first half of the Plan period
Are there known legal or ownership impediments to development?	No
Is there planning permission to develop the site?	No relevant recent planning history
When will the site be available for development?	0-5 Years

Available RAG	Amber
Achievable	-
Is there a reasonable prospect that the site will be developed?	The site has a low existing use value and residential development is likely to be economically viable at an appropriate density.
Achievable RAG	Green
Capacity	-
Prevailing Density (weighted) (dwellings per ha)	129
Residential capacity at prevailing density	14
Estimated employment space (m2)	
Estimated start date	0-5 Years
Estimated annual build-out rate (pa)	40-75
Development completion timescales (years)	0-5 Years

St Matthews Centre, Sturton Street, Cambridge



A map of St Matthews Centre, Sturton Street, Cambridge

Site information	-
Site ID	115524
HELAA Site ID	59405
Suitable Site Area (ha)	0.45
Ward/Parish	Petersfield
Greenfield or Previously Developed?	Previously Developed Land
Category of site	Densification of existing urban areas
Category of settlement	Cambridge City
Current use(s)	
Proposed development	Mixed use
Proposed employment floorspace (m2)	0
Proposed residential capacity	80-82
Suitability	-
Adopted Development Plan Policies RAG 2026	Green

Adopted Development Plan Policies Comment 2026	Development of the site is compatible and consistent with Development Plan policies and allocations.
Flood Risk RAG Assessment 2026	Amber
Flood Risk Officer Comment 2026	Flood Zones: Site is wholly within Flood Zone 1. Climate Change: Site is not within a climate-change-adjusted flood zone. Surface Water: 4% lies in a 1-in-1,000-year event. 24% lies in a 1-in-30-year event.
Flood Risk RAG Assessment 2025	Amber
Flood Risk Officer Comment 2025	Flood Zone: Wholly in Flood Zone 1. Surface Water Flooding: 24% lies in a 1 in 30 year event. 4% lies in a 1 in 1000 year event
Flood Risk RAG Assessment 2023	Amber
Flood Risk Officer Comment 2023	The site has areas at high, or medium risk from surface water flooding. Sites could contain some land in Flood Zones 2 and 3 provided there is sufficient land in Flood Zone 1 to accommodate at least 5 dwellings or 500 square metres of employment floorspace.
Flood Risk RAG Assessment 2021	
Flood Risk Officer Comment 2021	
Landscape RAG Assessment 2026	
Landscape Comment 2026	
Landscape RAG Assessment 2025	
Landscape Comment 2025	
Landscape RAG Assessment 2023	Amber
Landscape Comment 2023	The site has considerable constraints surrounding it including a border of TPO, mature trees, Protected Open Space abutting two sides, and a context of residential to one side and commercial/education on another. Proposals must be sympathetic to context primarily. Development is acceptable in principle due to the nature of the site as previously developed but proposals should be seen to enhance the site rather than detract
Landscape RAG Assessment 2021	
Landscape Comment 2021	
Biodiversity and Geodiversity RAG Assessment 2026	
Biodiversity and Geodiversity Officer Comments 2026	

Biodiversity and Geodiversity Guideline Comments 2026	
Biodiversity and Geodiversity RAG Assessment 2025	
Biodiversity and Geodiversity Officer Comments 2025	
Biodiversity and Geodiversity Guideline Comments 2025	
Biodiversity and Geodiversity RAG Assessment 2023	Green
Biodiversity and Geodiversity Officer Comments 2023	All residential developments will require consideration of recreational impacts on nearby SSSIs. The site likely contains low ecological value with no Priority habitat. However, the buildings will need to be assessed for their potential to support roosting bats.
Biodiversity and Geodiversity Guideline Comments 2023	Development of the site would not have a detrimental impact on any designated site, or those with a regional or local protection.
Biodiversity and Geodiversity RAG Assessment 2021	
Biodiversity and Geodiversity Officer Comments 2021	
Biodiversity and Geodiversity Guideline Comments 2021	
Policy RAG Rating 2026	Amber
Policy Officer Comment 2026	The site contains protected open space. However, given the size of the site and the scale of development, detrimental impacts could be reasonably mitigated, or the loss of the open space could be fully compensated locally as part of the site's development.
Policy RAG Rating 2025	Red
Policy Officer Comment 2025	Within or partially within Protected Open Space. Development of the site would result in a loss of open space which could not be replaced locally.
Policy RAG Rating 2023	Amber
Policy Officer Comment 2023	Site includes protected open space designation. Development of the site may have a detrimental impact on the protected open space designation, but the impact could be reasonably mitigated or compensated.
Policy RAG Rating 2021	
Policy Officer Comments 2021	
Historic Environment RAG Assessment 2026	
Historic Environment Comments 2026	

Historic Environment RAG Assessment 2025	
Historic Environment Comments 2025	
Historic Environment RAG Assessment 2023	Red
Historic Environment Comments 2023	Historically designated as public space. Mature trees and open character of the site provide strong contribution to Mill Road Conservation Area; regarded as a key open and public space. Built form on site has low impact on the significance of the area due to use, scale, and detailing. Redevelopment of the site would harm the character of the conservation area.
Historic Environment RAG Assessment 2021	
Historic Environment Comments 2021	
Archaeology RAG Assessment 2026	
Archaeology Officer Comment 2026	
Archaeology RAG Assessment 2025	
Archaeology Officer Comment 2025	
Archaeology RAG Assessment 2023	Amber
Archaeology Officer Comment 2023	Located on the southern edge of the historic village of Barnwell.
Archaeology RAG Assessment 2021	
Archaeology Officer Comment 2021	
Accessibility RAG Assessment	Green
Accessibility Comment	Good accessibility to key local services, transport, and employment opportunities.
Site Access RAG Assessment 2026	
Site Access Officer Comment 2026	
Site Access RAG Assessment 2025	
Site Access Officer Comment 2025	
Site Access RAG Assessment 2023	Amber
Site Access Officer Comment 2023	The proposed site is acceptable in principle subject to detailed design.
Site Access RAG Assessment 2021	

Site Access Officer Comment 2021	
Transport and Roads RAG Assessment 2026	
Transport and Roads Guideline Comments 2026	
Transport and Roads RAG Assessment 2025	
Transport and Roads Guideline Comments 2025	
Transport and Roads RAG Assessment 2023	Amber
Transport and Roads Guideline Comments 2023	Localised non motorised user improvements to link into existing non motorised user facilities will be required.
Transport and Roads RAG Assessment 2021	
Transport and Roads Guideline Comments 2021	
Noise, Vibration, Odour and Light Pollution RAG Assessment 2026	
Noise, Vibration, Odour and Light Pollution Guideline Comments 2026	
Noise, Vibration, Odour and Light Pollution RAG Assessment 2025	
Noise, Vibration, Odour and Light Pollution Guideline Comments 2025	
Noise, Vibration, Odour and Light Pollution RAG Assessment 2023	Amber
Noise, Vibration, Odour and Light Pollution Guideline Comments 2023	The site is capable of being developed to provide healthy internal and external environments in regard to noise / vibration/ odour/ Light Pollution after careful site layout, design and mitigation.
Noise, Vibration, Odour and Light Pollution RAG Assessment 2021	
Noise, Vibration, Odour and Light Pollution Guideline Comments 2021	
AQMA RAG Assessment 2026	
Air Quality Officer Comment 2026	
AQMA RAG Assessment 2025	
Air Quality Officer Comment 2025	

AQMA RAG Assessment 2023	Amber
Air Quality Officer Comment 2023	Site located inside AQMA and will require inherent / intrinsic designed in Air Quality mitigation
AQMA RAG Assessment 2021	
Air Quality Officer Comment 2021	
Contaminated Land RAG Assessment 2026	
Contaminated Land Officer Comments 2026	
Contaminated Land RAG Assessment 2025	
Contaminated Land Officer Comments 2025	
Contaminated Land RAG Assessment 2023	Amber
Contaminated Land Officer Comments 2023	This is a brownfield site where contamination is expected and planning conditions will be required.
Contaminated Land RAG Assessment 2021	
Contaminated Land Officer Comments 2021	
Overall Suitability Score	Red
Further constraints	-
Agricultural Land Classification Grade 1 (% overlap)	0
Agricultural Land Classification Grade 2 (% overlap)	0
Agricultural Land Classification Grade 3 (% overlap)	0
Agricultural Land Classification Grade 4 (% overlap)	0
Agricultural Land Classification Non Agricultural (% overlap)	0
Agricultural Land Classification Urban (% overlap)	100.00
Source Protection Zone (% overlap)	0
Highways England Zones	Cambridge
Available	-

Is the site controlled by a developer or landowner who has expressed an intention to develop?	The site was submitted by the landowner and/or site promoter who has confirmed that the site is available for development in the timescales indicated.
Are there known legal or ownership impediments to development?	No
Is there planning permission to develop the site?	No relevant recent planning history
When will the site be available for development?	0-5 Years
Available RAG	Green
Achievable	-
Is there a reasonable prospect that the site will be developed?	The land has been promoted by the landowner and or developer and is known to be available for development. The site has a low existing use value and mixed use development is likely to be economically viable at an appropriate density.
Achievable RAG	Green
Capacity	-
Prevailing Density (weighted) (dwellings per ha)	72
Residential capacity at prevailing density	32
Estimated employment space (m2)	0
Estimated start date	0-5 Years
Estimated annual build-out rate (pa)	40-75
Development completion timescales (years)	-

100-112 Hills Road, Cambridge



A map of 100-112 Hills Road, Cambridge

Site information	-
Site ID	115682
HELAA Site ID	40214
Suitable Site Area (ha)	1.17
Ward/Parish	Petersfield
Greenfield or Previously Developed?	Previously Developed Land
Category of site	Densification of existing urban areas
Category of settlement	Cambridge City
Current use(s)	
Proposed development	Non-Residential
Proposed employment floorspace (m2)	5750
Proposed residential capacity	0
Suitability	-
Adopted Development Plan Policies RAG 2026	Green

Adopted Development Plan Policies Comment 2026	Development of the site is compatible and consistent with Development Plan policies and allocations.
Flood Risk RAG Assessment 2026	Amber
Flood Risk Officer Comment 2026	Flood Zones: Site is wholly within Flood Zone 1. Climate Change: Site is not within a climate-change-adjusted flood zone. Surface Water: 29% lies in a 1-in-1,000-year event. 6% lies in a 1-in-100-year event. 7% lies in a 1-in-30-year event.
Flood Risk RAG Assessment 2025	Amber
Flood Risk Officer Comment 2025	Flood Zone: Wholly in Flood Zone 1. Surface Water Flooding: 7% lies in a 1 in 30 year event. 6% lies in a 1 in 100 year event. 29% lies in a 1 in 1000 year event
Flood Risk RAG Assessment 2023	
Flood Risk Officer Comment 2023	
Flood Risk RAG Assessment 2021	Amber
Flood Risk Officer Comment 2021	The site is within flood zone 2 (taking into account climate change) and/or is within an area at high, medium or low risk from surface water flooding.
Landscape RAG Assessment 2026	
Landscape Comment 2026	
Landscape RAG Assessment 2025	
Landscape Comment 2025	
Landscape RAG Assessment 2023	
Landscape Comment 2023	
Landscape RAG Assessment 2021	Amber
Landscape Comment 2021	The is adjacent to the Cambridge Botanic Garden. The site has an extant permission in place for a residential scheme but is also currently progressing an application for a full site redevelopment as office buildings. The site is acceptable but it is critical that proposals are sympathetic to the Botanic Garden and long distance views (policy 60 of the Cambridge Local Plan). Street planting and meaningful public realm must be included. Care needed around root protect zones from adjacent trees.
Biodiversity and Geodiversity RAG Assessment 2026	
Biodiversity and Geodiversity Officer Comments 2026	

Biodiversity and Geodiversity Guideline Comments 2026	
Biodiversity and Geodiversity RAG Assessment 2025	
Biodiversity and Geodiversity Officer Comments 2025	
Biodiversity and Geodiversity Guideline Comments 2025	
Biodiversity and Geodiversity RAG Assessment 2023	Amber
Biodiversity and Geodiversity Officer Comments 2023	No additional information has been provided in relation to ecology impacts and mitigation and therefore there is no change to the site assessment scoring.
Biodiversity and Geodiversity Guideline Comments 2023	Development of the site may have a detrimental impact on a designated site, or those with a regional or local protection but the impact could be reasonably mitigated or compensated.
Biodiversity and Geodiversity RAG Assessment 2021	Amber
Biodiversity and Geodiversity Officer Comments 2021	Site adjacent to Botanic Gardens County Wildlife site.
Biodiversity and Geodiversity Guideline Comments 2021	Development of the site may have a detrimental impact on a designated site, or those with a regional or local protection but the impact could be reasonably mitigated or compensated.
Policy RAG Rating 2026	Green
Policy Officer Comment 2026	The site does not contain protected open space, but it is adjacent to or within 50m of an open space designation. However, development of the site is already permissible in line with Policy 27 (M44 - Betjemen House) of the Cambridge Local Plan 2018.
Policy RAG Rating 2025	
Policy Officer Comment 2025	
Policy RAG Rating 2023	
Policy Officer Comment 2023	
Policy RAG Rating 2021	Green
Policy Officer Comments 2021	Cambridge Local Plan Site allocation M44. Site adjacent to Botanic Gardens County Wildlife Site. Development of the site may have a detrimental impact on a designated site, but the impact could be reasonably mitigated or compensated.
Historic Environment RAG Assessment 2026	
Historic Environment Comments 2026	
Historic Environment RAG Assessment 2025	

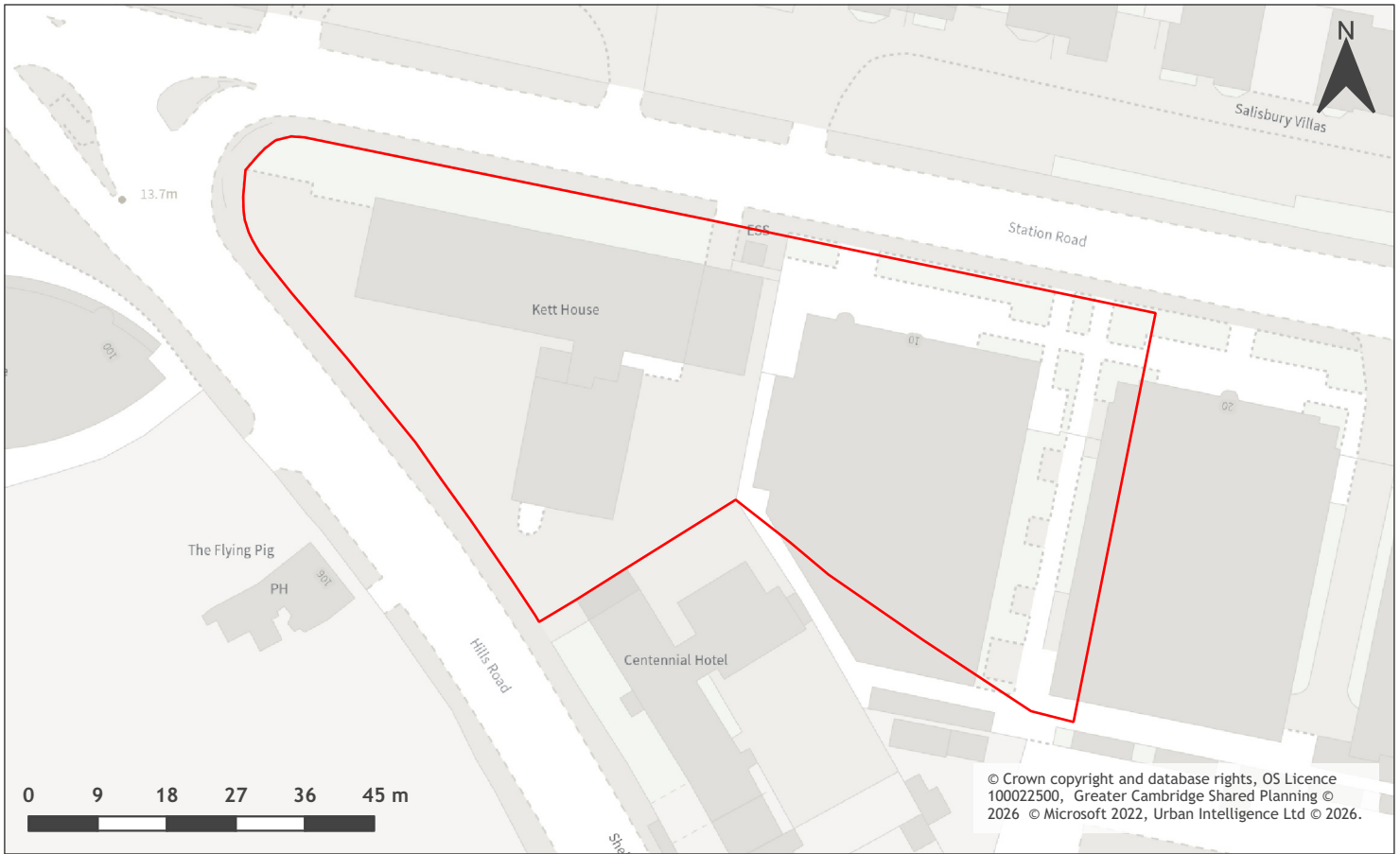
Historic Environment Comments 2025	
Historic Environment RAG Assessment 2023	Amber
Historic Environment Comments 2023	The revised information provided highlights that this is a sensitive site in terms of possible impact on heritage assets and their setting and so the original amber rating remains the same.
Historic Environment RAG Assessment 2021	Amber
Historic Environment Comments 2021	Development of the site could have a detrimental impact on a designated or non-designated heritage asset or the setting of a designated or non-designated heritage asset, but the impact could be reasonably mitigated.
Archaeology RAG Assessment 2026	
Archaeology Officer Comment 2026	
Archaeology RAG Assessment 2025	
Archaeology Officer Comment 2025	
Archaeology RAG Assessment 2023	Amber
Archaeology Officer Comment 2023	Based on the new information provided, the assessment for the site remains unchanged as Amber as there is evidence of archaeology in the area that will require further investigation.
Archaeology RAG Assessment 2021	Amber
Archaeology Officer Comment 2021	In addition to evidence for Roman activity in the vicinity, the site is of importance for the post medieval/early modern industry of the City of Cambridge
Accessibility RAG Assessment	Green
Accessibility Comment	Good accessibility to key local services, transport, and employment opportunities.
Site Access RAG Assessment 2026	
Site Access Officer Comment 2026	
Site Access RAG Assessment 2025	
Site Access Officer Comment 2025	
Site Access RAG Assessment 2023	Amber
Site Access Officer Comment 2023	Based on the new information provided, the site access assessment remains unchanged. The proposed site is acceptable in principle subject to detailed design.
Site Access RAG Assessment 2021	Amber

Site Access Officer Comment 2021	The proposed site is acceptable in principle subject to detailed design.
Transport and Roads RAG Assessment 2026	
Transport and Roads Guideline Comments 2026	
Transport and Roads RAG Assessment 2025	
Transport and Roads Guideline Comments 2025	
Transport and Roads RAG Assessment 2023	Amber
Transport and Roads Guideline Comments 2023	Based on the additional information provided, there is no change to the assessment score as the site is located within walking distance of a major travel interchange and the Chisholm Trail. Therefore there may potentially be contributions required to localised non motorised user infrastructure along with Travel Planning measures.
Transport and Roads RAG Assessment 2021	Amber
Transport and Roads Guideline Comments 2021	Any potential impact on the functioning of trunk roads and/or local roads could be reasonably mitigated.
Noise, Vibration, Odour and Light Pollution RAG Assessment 2026	
Noise, Vibration, Odour and Light Pollution Guideline Comments 2026	
Noise, Vibration, Odour and Light Pollution RAG Assessment 2025	
Noise, Vibration, Odour and Light Pollution Guideline Comments 2025	
Noise, Vibration, Odour and Light Pollution RAG Assessment 2023	
Noise, Vibration, Odour and Light Pollution Guideline Comments 2023	
Noise, Vibration, Odour and Light Pollution RAG Assessment 2021	Amber
Noise, Vibration, Odour and Light Pollution Guideline Comments 2021	The site is affected by operational Noise but development is acceptable in principle subject to appropriate detailed design considerations and mitigation.
AQMA RAG Assessment 2026	
Air Quality Officer Comment 2026	
AQMA RAG Assessment 2025	

Air Quality Officer Comment 2025	
AQMA RAG Assessment 2023	Amber
Air Quality Officer Comment 2023	No further information provided related to air quality issues or mitigation. Therefore the assessment of the site remains unchanged since the original assessment as the site is within an AQMA and will require inherent/intrinsic mitigation measures.
AQMA RAG Assessment 2021	Amber
Air Quality Officer Comment 2021	Will require inherent / intrinsic designed in AQ mitigation.
Contaminated Land RAG Assessment 2026	
Contaminated Land Officer Comments 2026	
Contaminated Land RAG Assessment 2025	
Contaminated Land Officer Comments 2025	
Contaminated Land RAG Assessment 2023	Amber
Contaminated Land Officer Comments 2023	No further information provided related to environmental health issues or mitigation. Therefore the assessment of the site remains unchanged since the original assessment as this is a brownfield site where contamination is expected and planning conditions will be required.
Contaminated Land RAG Assessment 2021	Amber
Contaminated Land Officer Comments 2021	Brownfield site, contamination expected and planning conditions required
Overall Suitability Score	Amber
Further constraints	-
Agricultural Land Classification Grade 1 (% overlap)	0
Agricultural Land Classification Grade 2 (% overlap)	0
Agricultural Land Classification Grade 3 (% overlap)	0
Agricultural Land Classification Grade 4 (% overlap)	0
Agricultural Land Classification Non Agricultural (% overlap)	0
Agricultural Land Classification Urban (% overlap)	100.00

Source Protection Zone (% overlap)	0
Highways England Zones	Cambridge
Available	-
Is the site controlled by a developer or landowner who has expressed an intention to develop?	The site was submitted by the landowner and/or site promoter who has confirmed that the site is available for development in the timescales indicated.
Are there known legal or ownership impediments to development?	No
Is there planning permission to develop the site?	Yes, Phase 1 of planning permission reference 06/0552/FUL has been implemented and remains extant. Development comprises B1 office use; Class A1, A3 and A4 uses; Residential; Community use.
When will the site be available for development?	0-5 Years
Available RAG	Green
Achievable	-
Is there a reasonable prospect that the site will be developed?	The land has been promoted by the landowner and or developer and is known to be available for development. The site has a low existing use value and non-residential development is likely to be economically viable at an appropriate density.
Achievable RAG	Green
Capacity	-
Prevailing Density (weighted) (dwellings per ha)	36
Residential capacity at prevailing density	38
Estimated employment space (m2)	5750
Estimated start date	0-5 Years
Estimated annual build-out rate (pa)	-
Development completion timescales (years)	0-5 Years

Kett House and 10 Station Road, Cambridge



A map of Kett House and 10 Station Road, Cambridge

Site information	-
Site ID	115684
HELAA Site ID	51605
Suitable Site Area (ha)	0.49
Ward/Parish	Petersfield
Greenfield or Previously Developed?	Previously Developed Land
Category of site	Densification of existing urban areas
Category of settlement	Cambridge City
Current use(s)	
Proposed development	Non-residential
Proposed employment floorspace (m ²)	1600
Proposed residential capacity	0
Suitability	-
Adopted Development Plan Policies RAG 2026	Green

Adopted Development Plan Policies Comment 2026	Development of the site is compatible and consistent with Development Plan policies and allocations.
Flood Risk RAG Assessment 2026	Amber
Flood Risk Officer Comment 2026	Flood Zones: Site is wholly within Flood Zone 1. Climate Change: Site is not within a climate-change-adjusted flood zone. Surface Water: 3% lies in a 1-in-1,000-year event. 4% lies in a 1-in-30-year event.
Flood Risk RAG Assessment 2025	Amber
Flood Risk Officer Comment 2025	Flood Zone: Wholly in Flood Zone 1. Surface Water Flooding: 4% lies in a 1 in 30 year event. 3% lies in a 1 in 1000 year event
Flood Risk RAG Assessment 2023	
Flood Risk Officer Comment 2023	
Flood Risk RAG Assessment 2021	Amber
Flood Risk Officer Comment 2021	The site contains areas at high, or medium risk from surface water flooding and/or the site contains some land in Flood Zones 2 and/or 3 but there is sufficient land in Flood Zone 1 to accommodate at least 5 additional dwellings or an increase of 500 square metres of employment floorspace.
Landscape RAG Assessment 2026	
Landscape Comment 2026	
Landscape RAG Assessment 2025	
Landscape Comment 2025	
Landscape RAG Assessment 2023	
Landscape Comment 2023	
Landscape RAG Assessment 2021	Green
Landscape Comment 2021	The site is currently developed as office space in multi-storey buildings. Kett House occupies a prominent piece of land at the junction of Station Road and Hills Road and is part of a larger Opportunity Area for the Station area. Land around the buildings is predominantly car parking with some significant tree planting along the Station Road. At the junction of the two roads, more ornamental planting and ornamental trees are present. A bank of TPO trees lines the eastern boundary in the carpark between Jupiter House and Leda House which must be retained.
Biodiversity and Geodiversity RAG Assessment 2026	
Biodiversity and Geodiversity Officer Comments 2026	

Biodiversity and Geodiversity Guideline Comments 2026	
Biodiversity and Geodiversity RAG Assessment 2025	
Biodiversity and Geodiversity Officer Comments 2025	
Biodiversity and Geodiversity Guideline Comments 2025	
Biodiversity and Geodiversity RAG Assessment 2023	
Biodiversity and Geodiversity Officer Comments 2023	
Biodiversity and Geodiversity Guideline Comments 2023	
Biodiversity and Geodiversity RAG Assessment 2021	Green
Biodiversity and Geodiversity Officer Comments 2021	Applications may find provision of a 10% net gain in biodiversity difficult within their red line boundaries and may need to find off-site compensation to comply with up-coming National legislation and developing local policies.
Biodiversity and Geodiversity Guideline Comments 2021	Development of the site would not have a detrimental impact on any designated site, or those with a regional or local protection.
Policy RAG Rating 2026	Green
Policy Officer Comment 2026	The site is adjacent to or within 50m of protected open space. Detrimental open space impacts are not anticipated.
Policy RAG Rating 2025	
Policy Officer Comment 2025	
Policy RAG Rating 2023	
Policy Officer Comment 2023	
Policy RAG Rating 2021	Green
Policy Officer Comments 2021	Site is not on protected open space designation. Any impact of the proposed development could be reasonably mitigated or compensated.
Historic Environment RAG Assessment 2026	
Historic Environment Comments 2026	
Historic Environment RAG Assessment 2025	
Historic Environment Comments 2025	

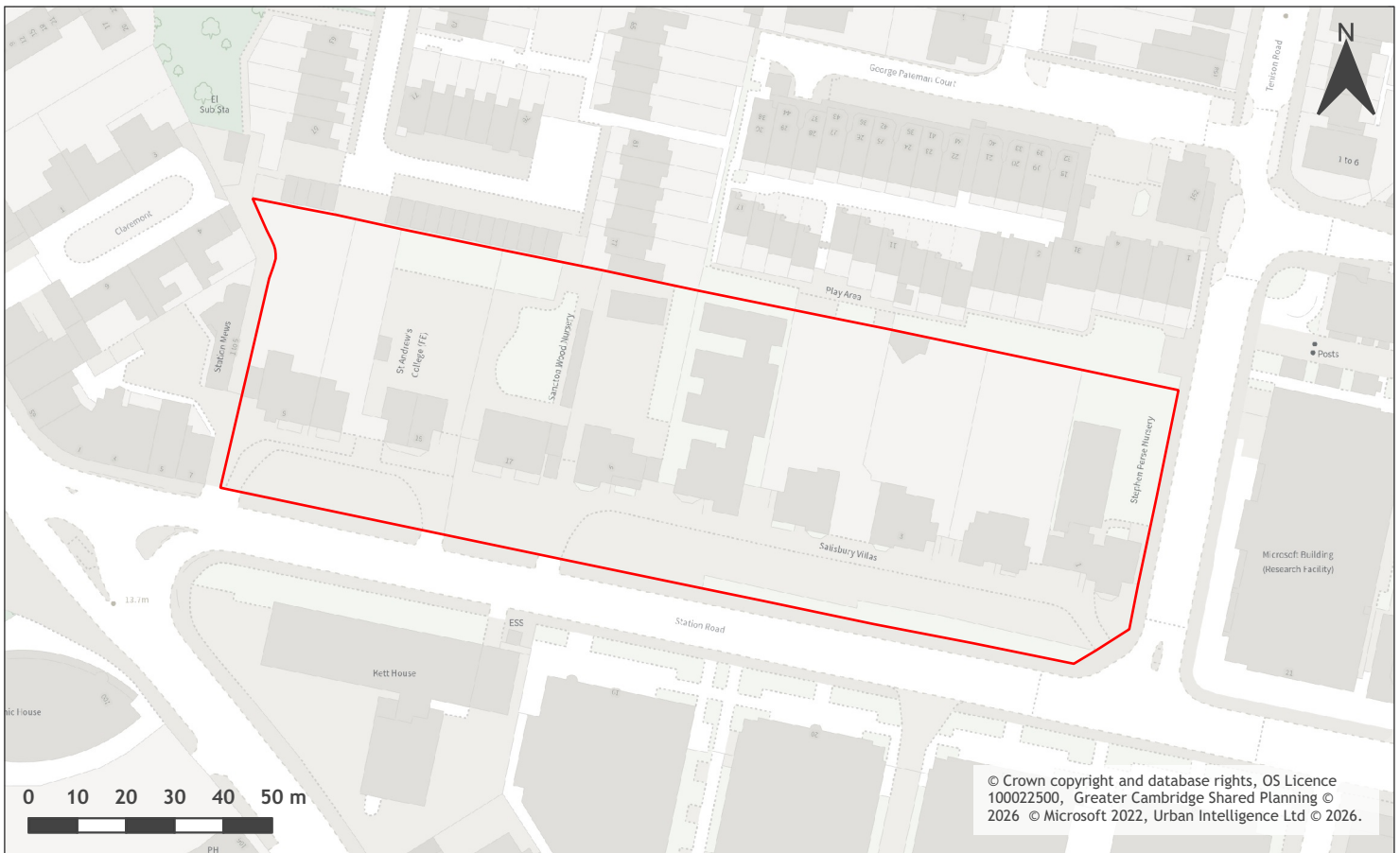
Historic Environment RAG Assessment 2023	
Historic Environment Comments 2023	
Historic Environment RAG Assessment 2021	Amber
Historic Environment Comments 2021	Any proposed development of this site should be considerate of the local designated and non-designated heritage assets. The bulk scale and massing should ensure that it does not negatively impact on the historic buildings in the locality. The height of any tall buildings should be tested against the relevant policy.
Archaeology RAG Assessment 2026	
Archaeology Officer Comment 2026	
Archaeology RAG Assessment 2025	
Archaeology Officer Comment 2025	
Archaeology RAG Assessment 2023	
Archaeology Officer Comment 2023	
Archaeology RAG Assessment 2021	Amber
Archaeology Officer Comment 2021	Evidence for Roman activity is recorded in the vicinity
Accessibility RAG Assessment	Green
Accessibility Comment	Good accessibility to key local services, transport, and employment opportunities.
Site Access RAG Assessment 2026	
Site Access Officer Comment 2026	
Site Access RAG Assessment 2025	
Site Access Officer Comment 2025	
Site Access RAG Assessment 2023	
Site Access Officer Comment 2023	
Site Access RAG Assessment 2021	Amber
Site Access Officer Comment 2021	The proposed site is acceptable in principle subject to detailed design.
Transport and Roads RAG Assessment 2026	
Transport and Roads Guideline Comments 2026	

Transport and Roads RAG Assessment 2025	
Transport and Roads Guideline Comments 2025	
Transport and Roads RAG Assessment 2023	
Transport and Roads Guideline Comments 2023	
Transport and Roads RAG Assessment 2021	Green
Transport and Roads Guideline Comments 2021	Development of the site will not have a detrimental impact on the functioning of trunk roads and/or local roads.
Noise, Vibration, Odour and Light Pollution RAG Assessment 2026	
Noise, Vibration, Odour and Light Pollution Guideline Comments 2026	
Noise, Vibration, Odour and Light Pollution RAG Assessment 2025	
Noise, Vibration, Odour and Light Pollution Guideline Comments 2025	
Noise, Vibration, Odour and Light Pollution RAG Assessment 2023	
Noise, Vibration, Odour and Light Pollution Guideline Comments 2023	
Noise, Vibration, Odour and Light Pollution RAG Assessment 2021	Amber
Noise, Vibration, Odour and Light Pollution Guideline Comments 2021	Flying Pig opposite (entertainment noise - Agent of Change) Station Rd / Hills Rd junction high level traffic noise -The proposed site will be affected by road traffic noise from nearby main roads but is acceptable in principle subject to appropriate detailed design considerations and mitigation.
AQMA RAG Assessment 2026	
Air Quality Officer Comment 2026	
AQMA RAG Assessment 2025	
Air Quality Officer Comment 2025	
AQMA RAG Assessment 2023	
Air Quality Officer Comment 2023	
AQMA RAG Assessment 2021	Amber

Air Quality Officer Comment 2021	AQ likely to be very poor for receptors fronting directly on to / close to Station Rd / Hills Rd junction may be exposed to unacceptable pollutant levels.
Contaminated Land RAG Assessment 2026	
Contaminated Land Officer Comments 2026	
Contaminated Land RAG Assessment 2025	
Contaminated Land Officer Comments 2025	
Contaminated Land RAG Assessment 2023	
Contaminated Land Officer Comments 2023	
Contaminated Land RAG Assessment 2021	Amber
Contaminated Land Officer Comments 2021	Brownfield site, contamination expected, conditions required
Overall Suitability Score	Amber
Further constraints	-
Agricultural Land Classification Grade 1 (% overlap)	0
Agricultural Land Classification Grade 2 (% overlap)	0
Agricultural Land Classification Grade 3 (% overlap)	0
Agricultural Land Classification Grade 4 (% overlap)	0
Agricultural Land Classification Non Agricultural (% overlap)	0
Agricultural Land Classification Urban (% overlap)	100.00
Source Protection Zone (% overlap)	0
Highways England Zones	Cambridge
Available	-
Is the site controlled by a developer or landowner who has expressed an intention to develop?	The site was submitted by the landowner and/or site promoter who has confirmed that the site is available for development in the timescales indicated.
Are there known legal or ownership impediments to development?	No

Is there planning permission to develop the site?	No relevant recent planning history
When will the site be available for development?	0-5 Years
Available RAG	Green
Achievable	-
Is there a reasonable prospect that the site will be developed?	The land has been promoted by the landowner and or developer and is known to be available for development. The site has a low existing use value and residential development is likely to be economically viable at an appropriate density.
Achievable RAG	Green
Capacity	-
Prevailing Density (weighted) (dwellings per ha)	36
Residential capacity at prevailing density	18
Estimated employment space (m2)	1600
Estimated start date	0-5 Years
Estimated annual build-out rate (pa)	-
Development completion timescales (years)	0-5 Years

Land on north side of Station Road, Cambridge



A map of Land on north side of Station Road, Cambridge

Site information	-
Site ID	115685
HELAA Site ID	40133
Suitable Site Area (ha)	1.12
Ward/Parish	Petersfield
Greenfield or Previously Developed?	Previously Developed Land
Category of site	Densification of existing urban areas
Category of settlement	Cambridge City
Current use(s)	
Proposed development	Non-residential
Proposed employment floorspace (m ²)	16,000-24,000
Proposed residential capacity	0
Suitability	-
Adopted Development Plan Policies RAG 2026	Green

Adopted Development Plan Policies Comment 2026	Development of the site is compatible and consistent with Development Plan policies and allocations.
Flood Risk RAG Assessment 2026	Amber
Flood Risk Officer Comment 2026	Flood Zones: Site is wholly within Flood Zone 1. Climate Change: Site is not within a climate-change-adjusted flood zone. Surface Water: 4% lies in a 1-in-1,000-year event. 1% lies in a 1-in-100-year event.
Flood Risk RAG Assessment 2025	Amber
Flood Risk Officer Comment 2025	Flood Zone: Wholly in Flood Zone 1. Surface Water Flooding: 1% lies in a 1 in 100 year event. 4% lies in a 1 in 1000 year event
Flood Risk RAG Assessment 2023	
Flood Risk Officer Comment 2023	
Flood Risk RAG Assessment 2021	Amber
Flood Risk Officer Comment 2021	The site is within flood zone 2 (taking into account climate change) and/or is within an area at high, medium or low risk from surface water flooding.
Landscape RAG Assessment 2026	
Landscape Comment 2026	
Landscape RAG Assessment 2025	
Landscape Comment 2025	
Landscape RAG Assessment 2023	Amber
Landscape Comment 2023	Additional information has been provided on the opportunities to improve the public realm along the south edge of the site showing how this area can form a new, positive public space on the approach to the station. The additional information does not change the RAG assessment because the impact on existing trees and impact on the character of the landscape around the historic villa type homes is still sensitive to change.
Landscape RAG Assessment 2021	Amber
Landscape Comment 2021	The site is an already developed site with a series of historic villa style houses which have been converted in a number of different uses, including educational. Development would need to maintain a significant amount of open frontage and separation and landscape buffering to the rear, as well as protecting and enhancing the existing tree canopy.
Biodiversity and Geodiversity RAG Assessment 2026	

Biodiversity and Geodiversity Officer Comments 2026	
Biodiversity and Geodiversity Guideline Comments 2026	
Biodiversity and Geodiversity RAG Assessment 2025	
Biodiversity and Geodiversity Officer Comments 2025	
Biodiversity and Geodiversity Guideline Comments 2025	
Biodiversity and Geodiversity RAG Assessment 2023	Amber
Biodiversity and Geodiversity Officer Comments 2023	The supporting documents highlight the previously submitted Preliminary Ecology Appraisal. Therefore no additional information has been provided in relation to ecology impacts and mitigation and therefore there is no change to the site assessment scoring.
Biodiversity and Geodiversity Guideline Comments 2023	Development of the site may have a detrimental impact on a designated site, or those with a regional or local protection but the impact could be reasonably mitigated or compensated.
Biodiversity and Geodiversity RAG Assessment 2021	Amber
Biodiversity and Geodiversity Officer Comments 2021	Site in close proximity to Botanic Garden County Wildlife site. Mature tree stock on site represents main existing biodiversity value. Potential for biodiversity enhancement through appropriate landscape scheme.
Biodiversity and Geodiversity Guideline Comments 2021	Development of the site may have a detrimental impact on a designated site, or those with a regional or local protection but the impact could be reasonably mitigated or compensated.
Policy RAG Rating 2026	Green
Policy Officer Comment 2026	The site is adjacent to or within 50m of protected open space. Detrimental open space impacts are not anticipated.
Policy RAG Rating 2025	
Policy Officer Comment 2025	
Policy RAG Rating 2023	
Policy Officer Comment 2023	
Policy RAG Rating 2021	Green
Policy Officer Comments 2021	Site is not on protected open space designation. Any impact of the proposed development could be reasonably mitigated or compensated.
Historic Environment RAG Assessment 2026	
Historic Environment Comments 2026	

Historic Environment RAG Assessment 2025	
Historic Environment Comments 2025	
Historic Environment RAG Assessment 2023	Red
Historic Environment Comments 2023	The representations describe different options for the site, with the stated preference being the option of total demolition and redevelopment. Therefore, the previous fundamental concerns relating to the loss of non-designated heritage assets and the high level of harm to the conservation area remain.
Historic Environment RAG Assessment 2021	Red
Historic Environment Comments 2021	This site is within the Conservation Area and all the villas are buildings of local interest. Development to the rear or demolition of the villas and redevelopment of the site would harm the character of the Conservation Area. Development of the site would cause substantial harm, or severe or significant "Less than substantial harm" to a designated heritage asset or the setting of a designated heritage asset which cannot be reasonably mitigated.
Archaeology RAG Assessment 2026	
Archaeology Officer Comment 2026	
Archaeology RAG Assessment 2025	
Archaeology Officer Comment 2025	
Archaeology RAG Assessment 2023	Amber
Archaeology Officer Comment 2023	Based on the amended information provided, the assessment for the site remains unchanged as Amber as there is evidence of archaeology in the area that will require further investigation.
Archaeology RAG Assessment 2021	Amber
Archaeology Officer Comment 2021	Evidence for prehistoric and Roman archaeology in the vicinity
Accessibility RAG Assessment	Green
Accessibility Comment	Good accessibility to key local services, transport, and employment opportunities.
Site Access RAG Assessment 2026	
Site Access Officer Comment 2026	
Site Access RAG Assessment 2025	
Site Access Officer Comment 2025	
Site Access RAG Assessment 2023	Amber

Site Access Officer Comment 2023	Based on the new information provided, the site access assessment remains unchanged. The proposed site is acceptable in principle subject to detailed design.
Site Access RAG Assessment 2021	Amber
Site Access Officer Comment 2021	The proposed site is acceptable in principle subject to detailed design.
Transport and Roads RAG Assessment 2026	
Transport and Roads Guideline Comments 2026	
Transport and Roads RAG Assessment 2025	
Transport and Roads Guideline Comments 2025	
Transport and Roads RAG Assessment 2023	Amber
Transport and Roads Guideline Comments 2023	Following the revisions to the proposal, the assessment scoring has been amended to amber as the site is located within walking distance of a major travel interchange and the Chisholm Trail. Therefore there may potentially be contributions required to localised non motorised user infrastructure along with Travel Planning measures.
Transport and Roads RAG Assessment 2021	Green
Transport and Roads Guideline Comments 2021	Development of the site will not have a detrimental impact on the functioning of trunk roads and/or local roads.
Noise, Vibration, Odour and Light Pollution RAG Assessment 2026	
Noise, Vibration, Odour and Light Pollution Guideline Comments 2026	
Noise, Vibration, Odour and Light Pollution RAG Assessment 2025	
Noise, Vibration, Odour and Light Pollution Guideline Comments 2025	
Noise, Vibration, Odour and Light Pollution RAG Assessment 2023	Amber
Noise, Vibration, Odour and Light Pollution Guideline Comments 2023	No further information provided related to environmental health issues or mitigation. Therefore the assessment of the site remains unchanged since the original assessment as careful site layout, design and mitigation will be required to address road traffic noise.
Noise, Vibration, Odour and Light Pollution RAG Assessment 2021	Amber

Noise, Vibration, Odour and Light Pollution Guideline Comments 2021	The proposed site will be affected by road traffic noise from nearby main roads, but is acceptable in principle subject to appropriate detailed design considerations and mitigation. The site is capable of being developed in regard to vibration/ odour/ light Pollution after careful site layout, design and mitigation.
AQMA RAG Assessment 2026	
Air Quality Officer Comment 2026	
AQMA RAG Assessment 2025	
Air Quality Officer Comment 2025	
AQMA RAG Assessment 2023	Amber
Air Quality Officer Comment 2023	No further information provided related to air quality issues or mitigation. Therefore the assessment of the site remains unchanged since the original assessment as the site is within an AQMA and will require inherent/intrinsic mitigation measures.
AQMA RAG Assessment 2021	Amber
Air Quality Officer Comment 2021	Will require inherent / intrinsic designed in AQ mitigation.
Contaminated Land RAG Assessment 2026	
Contaminated Land Officer Comments 2026	
Contaminated Land RAG Assessment 2025	
Contaminated Land Officer Comments 2025	
Contaminated Land RAG Assessment 2023	Amber
Contaminated Land Officer Comments 2023	No further information provided related to environmental health issues or mitigation. Therefore the assessment of the site remains unchanged since the original assessment as this is a brownfield site where contamination is expected and planning conditions will be required.
Contaminated Land RAG Assessment 2021	Amber
Contaminated Land Officer Comments 2021	Brownfield site, contamination expected and planning conditions required
Overall Suitability Score	Red
Further constraints	-
Agricultural Land Classification Grade 1 (% overlap)	0
Agricultural Land Classification Grade 2 (% overlap)	0

Agricultural Land Classification Grade 3 (% overlap)	0
Agricultural Land Classification Grade 4 (% overlap)	0
Agricultural Land Classification Non Agricultural (% overlap)	0
Agricultural Land Classification Urban (% overlap)	100.00
Source Protection Zone (% overlap)	0
Highways England Zones	Cambridge
Available	-
Is the site controlled by a developer or landowner who has expressed an intention to develop?	The site was submitted by the landowner and/or site promoter who has confirmed that the site is available for development in the timescales indicated.
Are there known legal or ownership impediments to development?	No
Is there planning permission to develop the site?	No relevant recent planning history
When will the site be available for development?	0-5 Years
Available RAG	Green
Achievable	-
Is there a reasonable prospect that the site will be developed?	The land has been promoted by the landowner and or developer and is known to be available for development. The site has a low existing use value and residential development is likely to be economically viable at an appropriate density.
Achievable RAG	Green
Capacity	-
Prevailing Density (weighted) (dwellings per ha)	56
Residential capacity at prevailing density	57
Estimated employment space (m2)	16,000-24,000
Estimated start date	0-5 Years
Estimated annual build-out rate (pa)	40-75
Development completion timescales (years)	0-5 Years

Travis Perkins, Devonshire Road (Policy 27 - R9)



A map of Travis Perkins, Devonshire Road (Policy 27 - R9)

Site information	-
Site ID	115690
HELAA Site ID	OS036
Suitable Site Area (ha)	1.23
Ward/Parish	Petersfield
Greenfield or Previously Developed?	Previously Developed Land
Category of site	Densification of existing urban areas
Category of settlement	Cambridge City
Current use(s)	
Proposed development	Residential
Proposed employment floorspace (m2)	0
Proposed residential capacity	43
Suitability	-
Adopted Development Plan Policies RAG 2026	Green

Adopted Development Plan Policies Comment 2026	Development of the site is compatible and consistent with Development Plan policies and allocations.
Flood Risk RAG Assessment 2026	Amber
Flood Risk Officer Comment 2026	Flood Zones: Site is wholly within Flood Zone 1. Climate Change: Site is not within a climate-change-adjusted flood zone. Surface Water: 4% lies in a 1-in-1,000-year event. 3% lies in a 1-in-30-year event.
Flood Risk RAG Assessment 2025	Amber
Flood Risk Officer Comment 2025	Flood Zone: Wholly in Flood Zone 1. Surface Water Flooding: 3% lies in a 1 in 30 year event. 4% lies in a 1 in 1000 year event
Flood Risk RAG Assessment 2023	
Flood Risk Officer Comment 2023	
Flood Risk RAG Assessment 2021	Amber
Flood Risk Officer Comment 2021	The site contains areas at high, or medium risk from surface water flooding and/or the site contains some land in Flood Zones 2 and/or 3 but there is sufficient land in Flood Zone 1 to accommodate at least 5 additional dwellings or an increase of 500 square metres of employment floorspace.
Landscape RAG Assessment 2026	
Landscape Comment 2026	
Landscape RAG Assessment 2025	
Landscape Comment 2025	
Landscape RAG Assessment 2023	
Landscape Comment 2023	
Landscape RAG Assessment 2021	Green
Landscape Comment 2021	The site is a builders merchants site adjacent to the Cambridge Railway Station and Railway line. There is dense line of TPO trees kept as a tall and overgrown hedge between the site and Devonshire Road. Additional large trees are dotted around the remaining boundaries Landscape impacts are minimal. Existing trees are recommended to be retained and treated as a site constraint and space need for additional tree planting as part of the development.
Biodiversity and Geodiversity RAG Assessment 2026	
Biodiversity and Geodiversity Officer Comments 2026	

Biodiversity and Geodiversity Guideline Comments 2026	
Biodiversity and Geodiversity RAG Assessment 2025	
Biodiversity and Geodiversity Officer Comments 2025	
Biodiversity and Geodiversity Guideline Comments 2025	
Biodiversity and Geodiversity RAG Assessment 2023	
Biodiversity and Geodiversity Officer Comments 2023	
Biodiversity and Geodiversity Guideline Comments 2023	
Biodiversity and Geodiversity RAG Assessment 2021	Amber
Biodiversity and Geodiversity Officer Comments 2021	All new residential developments will require an assessment of recreational impact on nearby SSSIs. Otherwise, impact on designated sites are unlikely. Boundary vegetation such as trees and native hedgerows may qualify as Habitats of Principal Importance/be of high ecological value and support protected or notable species. Hardstanding and buildings of low ecological value, although buildings may support roosting bats (if suitable). Opportunities to deliver biodiversity net gain, especially along railway edge.
Biodiversity and Geodiversity Guideline Comments 2021	Development of the site may have a detrimental impact on a designated site, or those with a regional or local protection but the impact could be reasonably mitigated or compensated.
Policy RAG Rating 2026	Green
Policy Officer Comment 2026	The site is wholly outside of protected open space. Detrimental open space impacts are not anticipated.
Policy RAG Rating 2025	
Policy Officer Comment 2025	
Policy RAG Rating 2023	
Policy Officer Comment 2023	
Policy RAG Rating 2021	Green
Policy Officer Comments 2021	Site is not on protected open space designation. Any impact of the proposed development could be reasonably mitigated or compensated.
Historic Environment RAG Assessment 2026	
Historic Environment Comments 2026	

Historic Environment RAG Assessment 2025	
Historic Environment Comments 2025	
Historic Environment RAG Assessment 2023	
Historic Environment Comments 2023	
Historic Environment RAG Assessment 2021	Amber
Historic Environment Comments 2021	Development of the site could have a detrimental impact on a designated or non-designated heritage asset or the setting of a designated or non-designated heritage asset, but the impact could be reasonably mitigated.
Archaeology RAG Assessment 2026	
Archaeology Officer Comment 2026	
Archaeology RAG Assessment 2025	
Archaeology Officer Comment 2025	
Archaeology RAG Assessment 2023	
Archaeology Officer Comment 2023	
Archaeology RAG Assessment 2021	Amber
Archaeology Officer Comment 2021	Potential for archaeology of post medieval and 19th century date to survive in the area
Accessibility RAG Assessment	Green
Accessibility Comment	Good accessibility to key local services, transport, and employment opportunities.
Site Access RAG Assessment 2026	
Site Access Officer Comment 2026	
Site Access RAG Assessment 2025	
Site Access Officer Comment 2025	
Site Access RAG Assessment 2023	
Site Access Officer Comment 2023	
Site Access RAG Assessment 2021	Amber
Site Access Officer Comment 2021	The proposed site is acceptable in principle subject to detailed design.

Transport and Roads RAG Assessment 2026	
Transport and Roads Guideline Comments 2026	
Transport and Roads RAG Assessment 2025	
Transport and Roads Guideline Comments 2025	
Transport and Roads RAG Assessment 2023	
Transport and Roads Guideline Comments 2023	
Transport and Roads RAG Assessment 2021	Amber
Transport and Roads Guideline Comments 2021	Any potential impact on the functioning of trunk roads and/or local roads could be reasonably mitigated.
Noise, Vibration, Odour and Light Pollution RAG Assessment 2026	
Noise, Vibration, Odour and Light Pollution Guideline Comments 2026	
Noise, Vibration, Odour and Light Pollution RAG Assessment 2025	
Noise, Vibration, Odour and Light Pollution Guideline Comments 2025	
Noise, Vibration, Odour and Light Pollution RAG Assessment 2023	
Noise, Vibration, Odour and Light Pollution Guideline Comments 2023	
Noise, Vibration, Odour and Light Pollution RAG Assessment 2021	Amber
Noise, Vibration, Odour and Light Pollution Guideline Comments 2021	The site is affected by noise from the nearby adjacent Railway Line, train Stabblings and servicing facilities and Industrial / Commercial (train Stabling) noise but is acceptable in principle subject to appropriate zoning / layout of residential, detailed design considerations and mitigation. Network Rail future plans for area - All PD
AQMA RAG Assessment 2026	
Air Quality Officer Comment 2026	
AQMA RAG Assessment 2025	
Air Quality Officer Comment 2025	

AQMA RAG Assessment 2023	
Air Quality Officer Comment 2023	
AQMA RAG Assessment 2021	Amber
Air Quality Officer Comment 2021	Site lies within an AQMA. Will require inherent / intrinsic designed in AQ mitigation eg EVCP - City
Contaminated Land RAG Assessment 2026	
Contaminated Land Officer Comments 2026	
Contaminated Land RAG Assessment 2025	
Contaminated Land Officer Comments 2025	
Contaminated Land RAG Assessment 2023	
Contaminated Land Officer Comments 2023	
Contaminated Land RAG Assessment 2021	Amber
Contaminated Land Officer Comments 2021	Brownfield site, contamination expected, conditions required
Overall Suitability Score	Amber
Further constraints	-
Agricultural Land Classification Grade 1 (% overlap)	0
Agricultural Land Classification Grade 2 (% overlap)	0
Agricultural Land Classification Grade 3 (% overlap)	0
Agricultural Land Classification Grade 4 (% overlap)	0
Agricultural Land Classification Non Agricultural (% overlap)	0
Agricultural Land Classification Urban (% overlap)	100.00
Source Protection Zone (% overlap)	0
Highways England Zones	Cambridge
Available	-

Is the site controlled by a developer or landowner who has expressed an intention to develop?	The site is an existing Local Plan Allocation and confirmation of its availability has been confirmed in the Greater Cambridge Housing Trajectory and Five year Housing Land Supply
Are there known legal or ownership impediments to development?	No
Is there planning permission to develop the site?	No relevant recent planning history
When will the site be available for development?	0-5 Years
Available RAG	Green
Achievable	-
Is there a reasonable prospect that the site will be developed?	Land is known to be available, evidenced through the published housing trajectory. The site has a low existing use value and development is likely to be economically viable at an appropriate density.
Achievable RAG	Green
Capacity	-
Prevailing Density (weighted) (dwellings per ha)	55
Residential capacity at prevailing density	61
Estimated employment space (m2)	
Estimated start date	0-5 Years
Estimated annual build-out rate (pa)	40-75
Development completion timescales (years)	0-5 Years

Travis Perkins, Devonshire Road, Cambridge



A map of Travis Perkins, Devonshire Road, Cambridge

Site information	-
Site ID	115691
HELAA Site ID	51615
Suitable Site Area (ha)	1.23
Ward/Parish	Petersfield
Greenfield or Previously Developed?	Previously Developed Land
Category of site	Densification of existing urban areas
Category of settlement	Cambridge City
Current use(s)	
Proposed development	Mixed Use
Proposed employment floorspace (m ²)	0
Proposed residential capacity	24
Suitability	-
Adopted Development Plan Policies RAG 2026	Green

Adopted Development Plan Policies Comment 2026	Development of the site is compatible and consistent with Development Plan policies and allocations.
Flood Risk RAG Assessment 2026	Amber
Flood Risk Officer Comment 2026	Flood Zones: Site is wholly within Flood Zone 1. Climate Change: Site is not within a climate-change-adjusted flood zone. Surface Water: 4% lies in a 1-in-1,000-year event. 3% lies in a 1-in-30-year event.
Flood Risk RAG Assessment 2025	Amber
Flood Risk Officer Comment 2025	Flood Zone: Wholly in Flood Zone 1. Surface Water Flooding: 3% lies in a 1 in 30 year event. 4% lies in a 1 in 1000 year event
Flood Risk RAG Assessment 2023	
Flood Risk Officer Comment 2023	
Flood Risk RAG Assessment 2021	Amber
Flood Risk Officer Comment 2021	The site contains areas at high, or medium risk from surface water flooding and/or the site contains some land in Flood Zones 2 and/or 3 but there is sufficient land in Flood Zone 1 to accommodate at least 5 additional dwellings or an increase of 500 square metres of employment floorspace.
Landscape RAG Assessment 2026	
Landscape Comment 2026	
Landscape RAG Assessment 2025	
Landscape Comment 2025	
Landscape RAG Assessment 2023	
Landscape Comment 2023	
Landscape RAG Assessment 2021	Amber
Landscape Comment 2021	All boundaries of this urban site have some degree of vegetation, but the most notable is the western boundary with Devonshire Road which contains tree and shrub planting and helps to screen the activity of the current use from the residential properties opposite. This vegetation has a group TPO. Residential use would be appropriate; however, a masterplan and a design that is sensitive to context will be required. An appropriate landscape, open space, drainage and tree strategy would be required together in close partnership with architectural design, height and density. The TPO vegetation along Devonshire Road would need to be retained and managed. The remaining boundary should have a soft landscape treatment as buffers to neighbours and the site should include and open space suitable to accommodate large species trees.

Biodiversity and Geodiversity RAG Assessment 2026	
Biodiversity and Geodiversity Officer Comments 2026	
Biodiversity and Geodiversity Guideline Comments 2026	
Biodiversity and Geodiversity RAG Assessment 2025	
Biodiversity and Geodiversity Officer Comments 2025	
Biodiversity and Geodiversity Guideline Comments 2025	
Biodiversity and Geodiversity RAG Assessment 2023	
Biodiversity and Geodiversity Officer Comments 2023	
Biodiversity and Geodiversity Guideline Comments 2023	
Biodiversity and Geodiversity RAG Assessment 2021	Green
Biodiversity and Geodiversity Officer Comments 2021	All residential developments will require an assessment of recreational impact on nearby SSSIs. Otherwise site likely to be of low ecological value. Building may support roosting bats (if suitable). Applications may find provision of a 10% net gain in biodiversity difficult within their red line boundaries and may need to find off-site compensation to comply with up-coming National legislation and developing local policies
Biodiversity and Geodiversity Guideline Comments 2021	Development of the site would not have a detrimental impact on any designated site, or those with a regional or local protection.
Policy RAG Rating 2026	Green
Policy Officer Comment 2026	The site is wholly outside of protected open space. Detrimental open space impacts are not anticipated.
Policy RAG Rating 2025	
Policy Officer Comment 2025	
Policy RAG Rating 2023	
Policy Officer Comment 2023	
Policy RAG Rating 2021	Green
Policy Officer Comments 2021	Site is not on protected open space designation. Any impact of the proposed development could be reasonably mitigated or compensated.

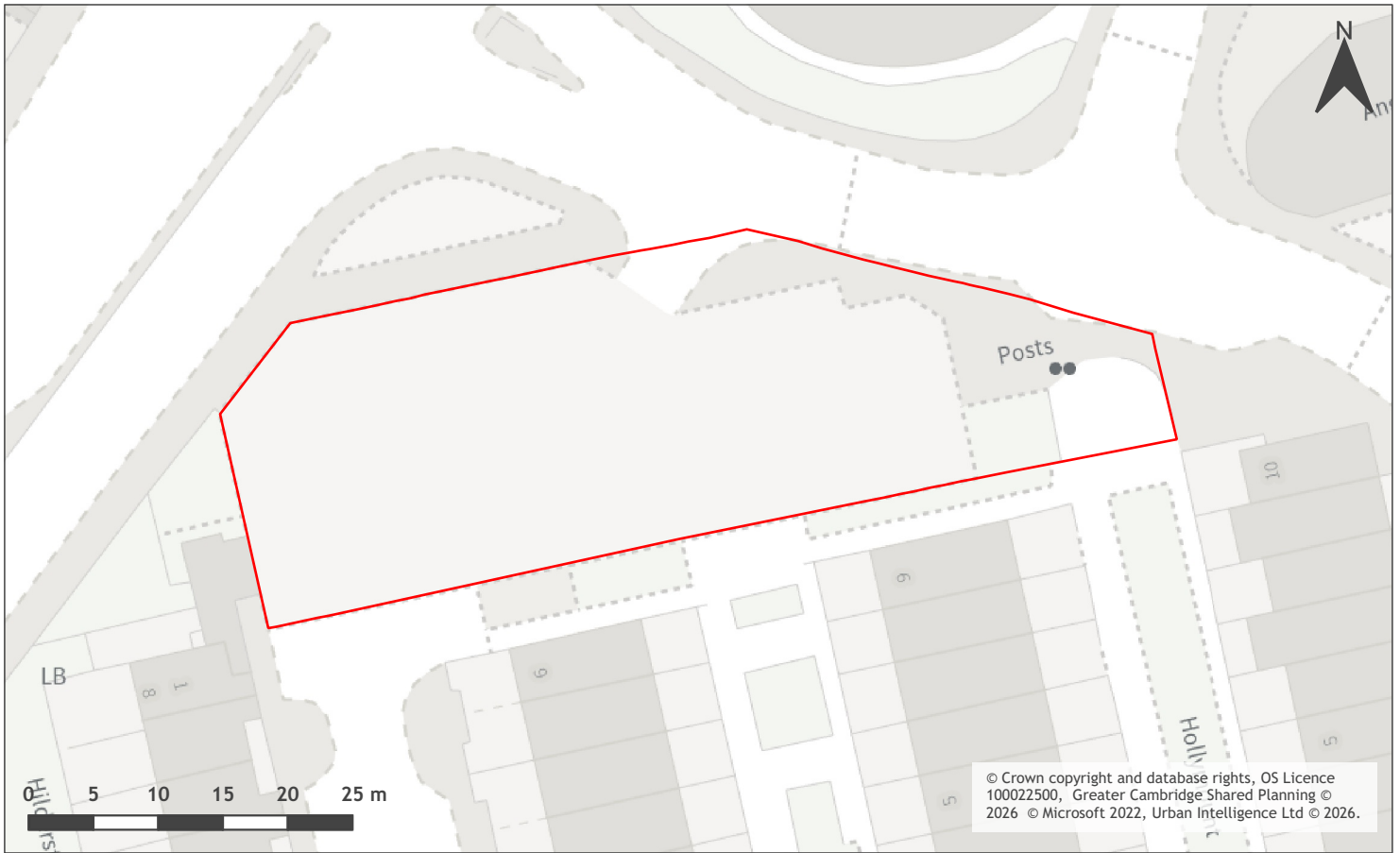
Historic Environment RAG Assessment 2026	
Historic Environment Comments 2026	
Historic Environment RAG Assessment 2025	
Historic Environment Comments 2025	
Historic Environment RAG Assessment 2023	Green
Historic Environment Comments 2023	The additional comments are noted. There is a current application for this site - 22/01982/FUL - which has Conservation and Urban Design support.
Historic Environment RAG Assessment 2021	Amber
Historic Environment Comments 2021	The Mill Road Conservation Area wraps around two sides of the site. An application for this site was approved in 2015 and the Conservation Team worked closely with Urban Design and the DM Team to get an appropriate scheme for this site that is adjacent to a heritage asset.
Archaeology RAG Assessment 2026	
Archaeology Officer Comment 2026	
Archaeology RAG Assessment 2025	
Archaeology Officer Comment 2025	
Archaeology RAG Assessment 2023	
Archaeology Officer Comment 2023	
Archaeology RAG Assessment 2021	Amber
Archaeology Officer Comment 2021	Evidence for prehistoric and Roman activity in the vicinity
Accessibility RAG Assessment	Green
Accessibility Comment	Good accessibility to key local services, transport, and employment opportunities.
Site Access RAG Assessment 2026	
Site Access Officer Comment 2026	
Site Access RAG Assessment 2025	
Site Access Officer Comment 2025	
Site Access RAG Assessment 2023	
Site Access Officer Comment 2023	

Site Access RAG Assessment 2021	Amber
Site Access Officer Comment 2021	The proposed site is acceptable in principle subject to detailed design.
Transport and Roads RAG Assessment 2026	
Transport and Roads Guideline Comments 2026	
Transport and Roads RAG Assessment 2025	
Transport and Roads Guideline Comments 2025	
Transport and Roads RAG Assessment 2023	
Transport and Roads Guideline Comments 2023	
Transport and Roads RAG Assessment 2021	Green
Transport and Roads Guideline Comments 2021	Development of the site will not have a detrimental impact on the functioning of trunk roads and/or local roads.
Noise, Vibration, Odour and Light Pollution RAG Assessment 2026	
Noise, Vibration, Odour and Light Pollution Guideline Comments 2026	
Noise, Vibration, Odour and Light Pollution RAG Assessment 2025	
Noise, Vibration, Odour and Light Pollution Guideline Comments 2025	
Noise, Vibration, Odour and Light Pollution RAG Assessment 2023	
Noise, Vibration, Odour and Light Pollution Guideline Comments 2023	
Noise, Vibration, Odour and Light Pollution RAG Assessment 2021	Amber
Noise, Vibration, Odour and Light Pollution Guideline Comments 2021	Nearby adjacent Railway Line - Train Stabblings and servicing facilities & Industrial / Commercial (train Stabling)- acceptable in principle subject to appropriate zoning / layout of residential, detailed design considerations and mitigation. Network Rail future plans for area - All PD
AQMA RAG Assessment 2026	
Air Quality Officer Comment 2026	
AQMA RAG Assessment 2025	

Air Quality Officer Comment 2025	
AQMA RAG Assessment 2023	
Air Quality Officer Comment 2023	
AQMA RAG Assessment 2021	Amber
Air Quality Officer Comment 2021	Lies within an AQMA. Will require inherent / intrinsic designed in AQ mitigation.
Contaminated Land RAG Assessment 2026	
Contaminated Land Officer Comments 2026	
Contaminated Land RAG Assessment 2025	
Contaminated Land Officer Comments 2025	
Contaminated Land RAG Assessment 2023	
Contaminated Land Officer Comments 2023	
Contaminated Land RAG Assessment 2021	Amber
Contaminated Land Officer Comments 2021	Brownfield site, contamination expected, conditions required
Overall Suitability Score	Amber
Further constraints	-
Agricultural Land Classification Grade 1 (% overlap)	0
Agricultural Land Classification Grade 2 (% overlap)	0
Agricultural Land Classification Grade 3 (% overlap)	0
Agricultural Land Classification Grade 4 (% overlap)	0
Agricultural Land Classification Non Agricultural (% overlap)	0
Agricultural Land Classification Urban (% overlap)	100.00
Source Protection Zone (% overlap)	0
Highways England Zones	Cambridge
Available	-

Is the site controlled by a developer or landowner who has expressed an intention to develop?	The site was submitted by the landowner and/or site promoter who has confirmed that the site is available for development in the timescales indicated.
Are there known legal or ownership impediments to development?	Yes - There is an existing tenant on the site.
Is there planning permission to develop the site?	Yes, Planning permission granted for 43 dwellings, but this application was not implemented and has lapsed.
When will the site be available for development?	0-5 Years
Available RAG	Amber
Achievable	-
Is there a reasonable prospect that the site will be developed?	The land has been promoted by the landowner and or developer and is known to be available for development. The site has a low existing use value and residential development is likely to be economically viable at an appropriate density.
Achievable RAG	Green
Capacity	-
Prevailing Density (weighted) (dwellings per ha)	55
Residential capacity at prevailing density	61
Estimated employment space (m2)	0
Estimated start date	0-5 Years
Estimated annual build-out rate (pa)	40-75
Development completion timescales (years)	0-5 Years

Former garages, East Road, Cambridge CB1 1DB



A map of Former garages, East Road, Cambridge CB1 1DB

Site information	-
Site ID	116109
HELAA Site ID	200821
Suitable Site Area (ha)	0.14
Ward/Parish	Petersfield
Greenfield or Previously Developed?	Previously developed land
Category of site	Densification of existing urban areas
Category of settlement	Cambridge City
Current use(s)	Car Park
Proposed development	Residential
Proposed employment floorspace (m2)	0
Proposed residential capacity	40
Suitability	-
Adopted Development Plan Policies RAG 2026	Green

Adopted Development Plan Policies Comment 2026	Development of the site is compatible and consistent with Development Plan policies and allocations.
Flood Risk RAG Assessment 2026	Green
Flood Risk Officer Comment 2026	Flood Zones: Site is wholly within Flood Zone 1. Climate Change: Site is not within a climate-change-adjusted flood zone. Surface Water Flood Risk: None.
Flood Risk RAG Assessment 2025	Green
Flood Risk Officer Comment 2025	Wholly in Flood Zone 1
Flood Risk RAG Assessment 2023	
Flood Risk Officer Comment 2023	
Flood Risk RAG Assessment 2021	
Flood Risk Officer Comment 2021	
Landscape RAG Assessment 2026	
Landscape Comment 2026	
Landscape RAG Assessment 2025	Green
Landscape Comment 2025	The site is a brownfield site with limited landscape constraints. Existing vegetation surrounding the site should be protected and retained. Development on the site will need to be limited to respond positively to its context, including the creation of a positive, vegetated streetscape to St Matthew's Street and East Street, and to existing built form.
Landscape RAG Assessment 2023	
Landscape Comment 2023	
Landscape RAG Assessment 2021	
Landscape Comment 2021	
Biodiversity and Geodiversity RAG Assessment 2026	
Biodiversity and Geodiversity Officer Comments 2026	
Biodiversity and Geodiversity Guideline Comments 2026	
Biodiversity and Geodiversity RAG Assessment 2025	Green

Biodiversity and Geodiversity Officer Comments 2025	A development of the size and scale described would not provide any specific Ecological risks to statutory or non-statutory designated sites. However, this does not remove the likelihood of protected and priority species being impacted, nor that a development of the type described would likely be eligible for mandatory minimum biodiversity net gain.
Biodiversity and Geodiversity Guideline Comments 2025	Development of the site would not have a detrimental impact on any designated site, or those with a regional or local protection.
Biodiversity and Geodiversity RAG Assessment 2023	
Biodiversity and Geodiversity Officer Comments 2023	
Biodiversity and Geodiversity Guideline Comments 2023	
Biodiversity and Geodiversity RAG Assessment 2021	
Biodiversity and Geodiversity Officer Comments 2021	
Biodiversity and Geodiversity Guideline Comments 2021	
Policy RAG Rating 2026	Green
Policy Officer Comment 2026	The site is adjacent to or within 50m of protected open space. Detrimental open space impacts are not anticipated.
Policy RAG Rating 2025	Green
Policy Officer Comment 2025	Site is not on protected open space designation. Any impact of the proposed development could be reasonably mitigated or compensated
Policy RAG Rating 2023	
Policy Officer Comment 2023	
Policy RAG Rating 2021	
Policy Officer Comments 2021	
Historic Environment RAG Assessment 2026	
Historic Environment Comments 2026	
Historic Environment RAG Assessment 2025	Amber
Historic Environment Comments 2025	Site is within 100m of a Grade II listed building and the Mill Road Conservation Area. Development of the site could have a detrimental impact on a designated or non-designated heritage asset or the setting of a designated or non-designated heritage asset, but the impact could be reasonably mitigated through careful design, form, density and layout.
Historic Environment RAG Assessment 2023	

Historic Environment Comments 2023	
Historic Environment RAG Assessment 2021	
Historic Environment Comments 2021	
Archaeology RAG Assessment 2026	
Archaeology Officer Comment 2026	
Archaeology RAG Assessment 2025	Green
Archaeology Officer Comment 2025	The site is disturbed to the extent that significant archaeology is unlikely to survive.
Archaeology RAG Assessment 2023	
Archaeology Officer Comment 2023	
Archaeology RAG Assessment 2021	
Archaeology Officer Comment 2021	
Accessibility RAG Assessment	Green
Accessibility Comment	Good accessibility to key local services, transport, and employment opportunities.
Site Access RAG Assessment 2026	
Site Access Officer Comment 2026	
Site Access RAG Assessment 2025	Amber
Site Access Officer Comment 2025	The site has been scored as Amber. The site is acceptable in principle, subject to further detail and consultation at the planning application stage.
Site Access RAG Assessment 2023	
Site Access Officer Comment 2023	
Site Access RAG Assessment 2021	
Site Access Officer Comment 2021	
Transport and Roads RAG Assessment 2026	
Transport and Roads Guideline Comments 2026	
Transport and Roads RAG Assessment 2025	Green
Transport and Roads Guideline Comments 2025	This falls below the threshold for a Transport Assessment

Transport and Roads RAG Assessment 2023	
Transport and Roads Guideline Comments 2023	
Transport and Roads RAG Assessment 2021	
Transport and Roads Guideline Comments 2021	
Noise, Vibration, Odour and Light Pollution RAG Assessment 2026	
Noise, Vibration, Odour and Light Pollution Guideline Comments 2026	
Noise, Vibration, Odour and Light Pollution RAG Assessment 2025	Amber
Noise, Vibration, Odour and Light Pollution Guideline Comments 2025	East Road / St Matthews Street, road traffic noise can have a significant adverse noise impact on health and quality of life / amenity both internally and externally. Will be challenging. However, with the consideration of good acoustic design for example layout, orientation, mitigation / insulation early in the design process, noise can be mitigated and reduced to an acceptable level / effect.
Noise, Vibration, Odour and Light Pollution RAG Assessment 2023	
Noise, Vibration, Odour and Light Pollution Guideline Comments 2023	
Noise, Vibration, Odour and Light Pollution RAG Assessment 2021	
Noise, Vibration, Odour and Light Pollution Guideline Comments 2021	
AQMA RAG Assessment 2026	
Air Quality Officer Comment 2026	
AQMA RAG Assessment 2025	Amber
Air Quality Officer Comment 2025	The site has been scored as Amber. The site falls within an Air Quality Management Area (AQMA) and therefore inherent/intrinsic designed-in air quality mitigation measures and conditions will be required to offset impacts on the designated AQMA.
AQMA RAG Assessment 2023	
Air Quality Officer Comment 2023	
AQMA RAG Assessment 2021	

Air Quality Officer Comment 2021	
Contaminated Land RAG Assessment 2026	
Contaminated Land Officer Comments 2026	
Contaminated Land RAG Assessment 2025	Amber
Contaminated Land Officer Comments 2025	Brownfield site, contamination expected, conditions required
Contaminated Land RAG Assessment 2023	
Contaminated Land Officer Comments 2023	
Contaminated Land RAG Assessment 2021	
Contaminated Land Officer Comments 2021	
Overall Suitability Score	Amber
Further constraints	-
Agricultural Land Classification Grade 1 (% overlap)	0
Agricultural Land Classification Grade 2 (% overlap)	0
Agricultural Land Classification Grade 3 (% overlap)	0
Agricultural Land Classification Grade 4 (% overlap)	0
Agricultural Land Classification Non Agricultural (% overlap)	0
Agricultural Land Classification Urban (% overlap)	100.00
Source Protection Zone (% overlap)	0
Highways England Zones	Cambridge
Available	-
Is the site controlled by a developer or landowner who has expressed an intention to develop?	The site was submitted by the landowner and/or site promoter who has confirmed that the site is available for development in the timescales indicated.
Are there known legal or ownership impediments to development?	No

Is there planning permission to develop the site?	No relevant recent planning history
When will the site be available for development?	0 to 5 years
Available RAG	Amber
Achievable	-
Is there a reasonable prospect that the site will be developed?	The land has been promoted by the landowner and or developer and is known to be available for development. The site has a low existing use value and development is likely to be economically viable
Achievable RAG	Green
Capacity	-
Prevailing Density (weighted) (dwellings per ha)	134
Residential capacity at prevailing density	19
Estimated employment space (m2)	0
Estimated start date	0-5 Years
Estimated annual build-out rate (pa)	40-75
Development completion timescales (years)	0-5 Years