

Adopted Development Plan Policies Comment 2026	Development of the site is compatible and consistent with Development Plan policies and allocations.
Flood Risk RAG Assessment 2026	Amber
Flood Risk Officer Comment 2026	Flood Zones: Site is wholly within Flood Zone 1. Climate Change: Site is not within a climate-change-adjusted flood zone. Surface Water: 18% lies in a 1-in-1,000-year event. 6% lies in a 1-in-100-year event. 13% lies in a 1-in-30-year event.
Flood Risk RAG Assessment 2025	Amber
Flood Risk Officer Comment 2025	Flood Zone: Wholly in Flood Zone 1. Surface Water Flooding: 13% lies in a 1 in 30 year event. 6% lies in a 1 in 100 year event. 18% lies in a 1 in 1000 year event
Flood Risk RAG Assessment 2023	
Flood Risk Officer Comment 2023	
Flood Risk RAG Assessment 2021	Amber
Flood Risk Officer Comment 2021	The site contains areas at high, or medium risk from surface water flooding and/or the site contains some land in Flood Zones 2 and/or 3 but there is sufficient land in Flood Zone 1 to accommodate at least 5 additional dwellings or an increase of 500 square metres of employment floorspace.
Landscape RAG Assessment 2026	
Landscape Comment 2026	
Landscape RAG Assessment 2025	
Landscape Comment 2025	
Landscape RAG Assessment 2023	
Landscape Comment 2023	
Landscape RAG Assessment 2021	Green
Landscape Comment 2021	The site is a large industrial estate on the south side of the railway line opposite the Cambridge Station (Central). Landscape impacts are low. Buffering or integration with the existing residential development surrounding the site will be critical to the success of the site. Areas of Open Space for residents will also be important for their recreation and amenity needs. These recommendations fall within the parameters of the existing allocation and are supported
Biodiversity and Geodiversity RAG Assessment 2026	
Biodiversity and Geodiversity Officer Comments 2026	

Biodiversity and Geodiversity Guideline Comments 2026	
Biodiversity and Geodiversity RAG Assessment 2025	
Biodiversity and Geodiversity Officer Comments 2025	
Biodiversity and Geodiversity Guideline Comments 2025	
Biodiversity and Geodiversity RAG Assessment 2023	
Biodiversity and Geodiversity Officer Comments 2023	
Biodiversity and Geodiversity Guideline Comments 2023	
Biodiversity and Geodiversity RAG Assessment 2021	Amber
Biodiversity and Geodiversity Officer Comments 2021	All residential developments will require an assessment of recreational impact on nearby SSSIs. Otherwise unlikely to impact on designated sites. Boundary trees, hedgerows and Open Mosaic Habitat (if present e.g. in railway sidings) may qualify as Habitats of Principal Importance/be of high ecological value and support protected or notable species. Site likely to be of low ecological value, although buildings may support roosting bats or nesting birds if suitable. Opportunities to enhance ecological networks and deliver biodiversity net gain.
Biodiversity and Geodiversity Guideline Comments 2021	Development of the site may have a detrimental impact on a designated site, or those with a regional or local protection but the impact could be reasonably mitigated or compensated.
Policy RAG Rating 2026	Green
Policy Officer Comment 2026	The site is within 50m of protected open space or partially overlaps with protected open space. Development of the site is already permissible in line with Policy 27 (M2 - Clifton Road Area Maximum) of the Cambridge Local Plan 2018.
Policy RAG Rating 2025	
Policy Officer Comment 2025	
Policy RAG Rating 2023	
Policy Officer Comment 2023	
Policy RAG Rating 2021	Green
Policy Officer Comments 2021	Cambridge Local Plan Site allocation M2. Site adjacent to Rustat Avenue Amenity Green Space. Development of the site may have a detrimental impact on the open space designation, but the impact could be reasonably mitigated or compensated.

Historic Environment RAG Assessment 2026	
Historic Environment Comments 2026	
Historic Environment RAG Assessment 2025	
Historic Environment Comments 2025	
Historic Environment RAG Assessment 2023	
Historic Environment Comments 2023	
Historic Environment RAG Assessment 2021	Amber
Historic Environment Comments 2021	Development of the site could have a detrimental impact on a designated or non-designated heritage asset or the setting of a designated or non-designated heritage asset, but the impact could be reasonably mitigated.
Archaeology RAG Assessment 2026	
Archaeology Officer Comment 2026	
Archaeology RAG Assessment 2025	
Archaeology Officer Comment 2025	
Archaeology RAG Assessment 2023	
Archaeology Officer Comment 2023	
Archaeology RAG Assessment 2021	Amber
Archaeology Officer Comment 2021	Potential for archaeology of Roman and 19th century date in the area
Accessibility RAG Assessment	Green
Accessibility Comment	Good accessibility to key local services, transport, and employment opportunities.
Site Access RAG Assessment 2026	
Site Access Officer Comment 2026	
Site Access RAG Assessment 2025	
Site Access Officer Comment 2025	
Site Access RAG Assessment 2023	
Site Access Officer Comment 2023	

Site Access RAG Assessment 2021	Amber
Site Access Officer Comment 2021	The proposed site is acceptable in principle subject to detailed design.
Transport and Roads RAG Assessment 2026	
Transport and Roads Guideline Comments 2026	
Transport and Roads RAG Assessment 2025	
Transport and Roads Guideline Comments 2025	
Transport and Roads RAG Assessment 2023	
Transport and Roads Guideline Comments 2023	
Transport and Roads RAG Assessment 2021	Amber
Transport and Roads Guideline Comments 2021	Any potential impact on the functioning of trunk roads and/or local roads could be reasonably mitigated.
Noise, Vibration, Odour and Light Pollution RAG Assessment 2026	
Noise, Vibration, Odour and Light Pollution Guideline Comments 2026	
Noise, Vibration, Odour and Light Pollution RAG Assessment 2025	
Noise, Vibration, Odour and Light Pollution Guideline Comments 2025	
Noise, Vibration, Odour and Light Pollution RAG Assessment 2023	
Noise, Vibration, Odour and Light Pollution Guideline Comments 2023	
Noise, Vibration, Odour and Light Pollution RAG Assessment 2021	Amber
Noise, Vibration, Odour and Light Pollution Guideline Comments 2021	The site will be affected by industrial to rear and traffic noise but is acceptable in principle subject to detailed design considerations and mitigation.
AQMA RAG Assessment 2026	
Air Quality Officer Comment 2026	
AQMA RAG Assessment 2025	

Air Quality Officer Comment 2025	
AQMA RAG Assessment 2023	
Air Quality Officer Comment 2023	
AQMA RAG Assessment 2021	Amber
Air Quality Officer Comment 2021	Site lies within an AQMA. Will require inherent / intrinsic designed in AQ mitigation eg EVCP - City
Contaminated Land RAG Assessment 2026	
Contaminated Land Officer Comments 2026	
Contaminated Land RAG Assessment 2025	
Contaminated Land Officer Comments 2025	
Contaminated Land RAG Assessment 2023	
Contaminated Land Officer Comments 2023	
Contaminated Land RAG Assessment 2021	Amber
Contaminated Land Officer Comments 2021	Brownfield site, contamination expected, conditions required
Overall Suitability Score	Amber
Further constraints	-
Agricultural Land Classification Grade 1 (% overlap)	0
Agricultural Land Classification Grade 2 (% overlap)	0
Agricultural Land Classification Grade 3 (% overlap)	0
Agricultural Land Classification Grade 4 (% overlap)	0
Agricultural Land Classification Non Agricultural (% overlap)	0
Agricultural Land Classification Urban (% overlap)	100.00
Source Protection Zone (% overlap)	0
Highways England Zones	Cambridge
Available	-

Is the site controlled by a developer or landowner who has expressed an intention to develop?	The site is an existing Local Plan Allocation and confirmation of its availability has been confirmed in the Greater Cambridge Housing Trajectory and Five year Housing Land Supply
Are there known legal or ownership impediments to development?	No
Is there planning permission to develop the site?	No relevant recent planning history
When will the site be available for development?	0-5 Years
Available RAG	Green
Achievable	-
Is there a reasonable prospect that the site will be developed?	Land is known to be available, evidenced through the published housing trajectory. The site has a low existing use value and development is likely to be economically viable at an appropriate density.
Achievable RAG	Green
Capacity	-
Prevailing Density (weighted) (dwellings per ha)	120
Residential capacity at prevailing density	790
Estimated employment space (m2)	8000
Estimated start date	0-5 Years
Estimated annual build-out rate (pa)	86
Development completion timescales (years)	6-10 Years

The Paddocks, 347 Cherry Hinton Road (Policy 27 - R7)



A map of The Paddocks, 347 Cherry Hinton Road (Policy 27 - R7)

Site information	-
Site ID	115697
HELAA Site ID	OS032
Suitable Site Area (ha)	2.8
Ward/Parish	Coleridge
Greenfield or Previously Developed?	Previously Developed Land
Category of site	Densification of existing urban areas
Category of settlement	Cambridge City
Current use(s)	
Proposed development	Residential
Proposed employment floorspace (m2)	0
Proposed residential capacity	123
Suitability	-
Adopted Development Plan Policies RAG 2026	Green

Adopted Development Plan Policies Comment 2026	Development of the site is compatible and consistent with Development Plan policies and allocations.
Flood Risk RAG Assessment 2026	Amber
Flood Risk Officer Comment 2026	Flood Zones: Site is wholly within Flood Zone 1. Climate Change: Site is not within a climate-change-adjusted flood zone. Surface Water: 9% lies in a 1-in-1,000-year event. 8% lies in a 1-in-100-year event. 39% lies in a 1-in-30-year event.
Flood Risk RAG Assessment 2025	Amber
Flood Risk Officer Comment 2025	Flood Zone: Wholly in Flood Zone 1. Surface Water Flooding: 39% lies in a 1 in 30 year event. 8% lies in a 1 in 100 year event. 9% lies in a 1 in 1000 year event
Flood Risk RAG Assessment 2023	
Flood Risk Officer Comment 2023	
Flood Risk RAG Assessment 2021	Amber
Flood Risk Officer Comment 2021	The site contains areas at high, or medium risk from surface water flooding and/or the site contains some land in Flood Zones 2 and/or 3 but there is sufficient land in Flood Zone 1 to accommodate at least 5 additional dwellings or an increase of 500 square metres of employment floorspace.
Landscape RAG Assessment 2026	
Landscape Comment 2026	
Landscape RAG Assessment 2025	
Landscape Comment 2025	
Landscape RAG Assessment 2023	
Landscape Comment 2023	
Landscape RAG Assessment 2021	Green
Landscape Comment 2021	The Site is currently developed as an industrial estate with warehouse/office and warehouse/retail type units. Effectively the site is a 'backland' site since it has no frontages onto the highway. The only landscape impacts lie in the impacts on the existing trees both non-TPO (offsite) and TPO. Any development should be mindful of avoiding negative impacts on the trees and allow sufficient space for tree planting as part of the development.
Biodiversity and Geodiversity RAG Assessment 2026	
Biodiversity and Geodiversity Officer Comments 2026	

Biodiversity and Geodiversity Guideline Comments 2026	
Biodiversity and Geodiversity RAG Assessment 2025	
Biodiversity and Geodiversity Officer Comments 2025	
Biodiversity and Geodiversity Guideline Comments 2025	
Biodiversity and Geodiversity RAG Assessment 2023	
Biodiversity and Geodiversity Officer Comments 2023	
Biodiversity and Geodiversity Guideline Comments 2023	
Biodiversity and Geodiversity RAG Assessment 2021	Amber
Biodiversity and Geodiversity Officer Comments 2021	All residential developments will require an assessment of recreational impact on nearby SSSIs. Otherwise unlikely to be impact on designated sites. Wooded boundaries and hedgerows may qualify as Habitats of Principal Importance/be of high ecological value (as well as being covered by a TPO) and support protected or notable species. Site likely to be of low ecological value although buildings may support bats and nesting birds if suitable.
Biodiversity and Geodiversity Guideline Comments 2021	Development of the site may have a detrimental impact on a designated site, or those with a regional or local protection but the impact could be reasonably mitigated or compensated.
Policy RAG Rating 2026	Green
Policy Officer Comment 2026	The site does not contain protected open space, but it is adjacent to or within 50m of an open space designation. However, development of the site is already permissible in line with Policy 27 (R7 - The Paddocks, 347 Cherry Hinton Road) of the Cambridge Local Plan 2018.
Policy RAG Rating 2025	
Policy Officer Comment 2025	
Policy RAG Rating 2023	
Policy Officer Comment 2023	
Policy RAG Rating 2021	Green
Policy Officer Comments 2021	Site is not on protected open space designation. Any impact of the proposed development could be reasonably mitigated or compensated.
Historic Environment RAG Assessment 2026	
Historic Environment Comments 2026	

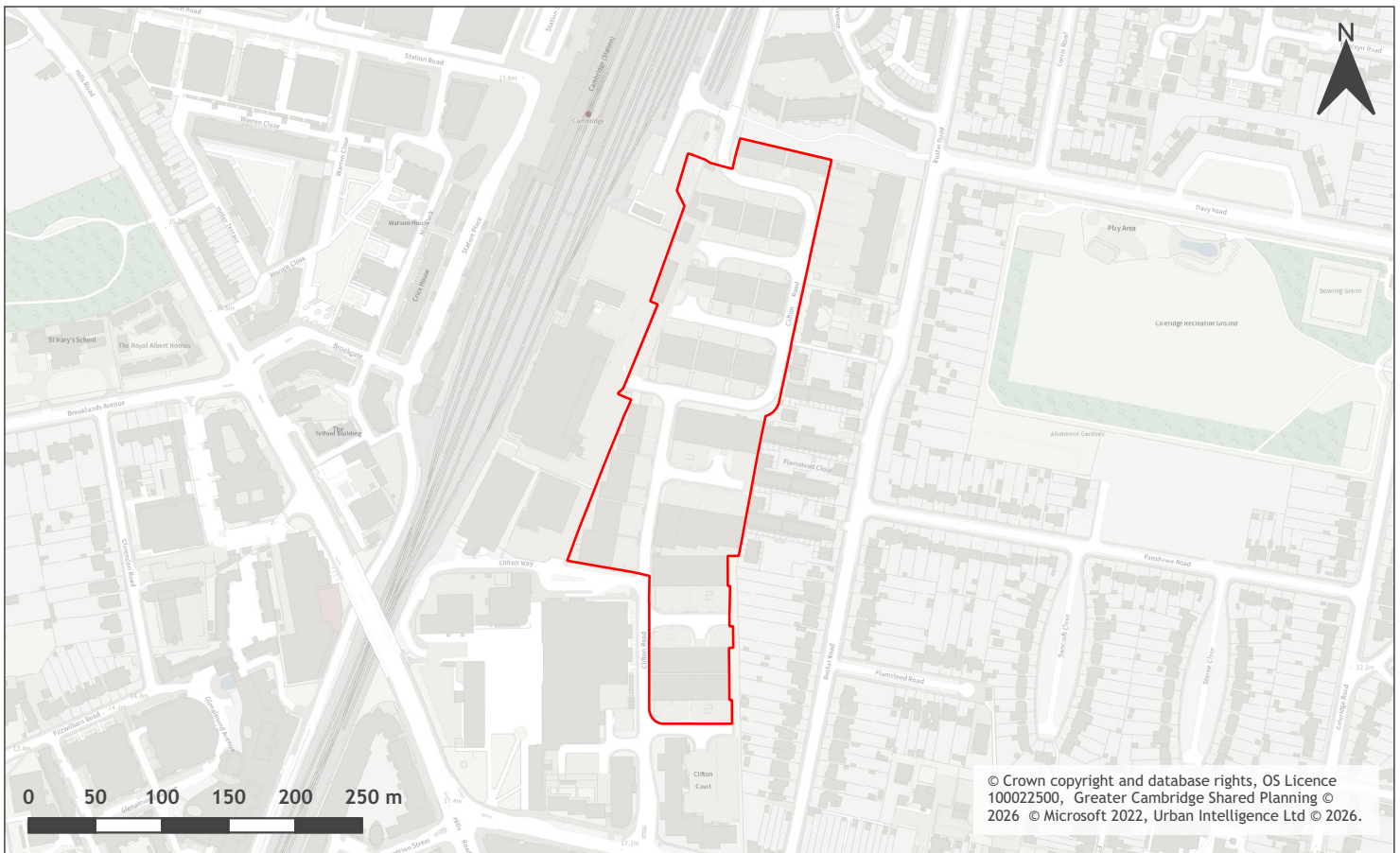
Historic Environment RAG Assessment 2025	
Historic Environment Comments 2025	
Historic Environment RAG Assessment 2023	
Historic Environment Comments 2023	
Historic Environment RAG Assessment 2021	Green
Historic Environment Comments 2021	Development of the site would have either a neutral or positive impact, but importantly not have a detrimental impact on any designated or non-designated heritage assets.
Archaeology RAG Assessment 2026	
Archaeology Officer Comment 2026	
Archaeology RAG Assessment 2025	
Archaeology Officer Comment 2025	
Archaeology RAG Assessment 2023	
Archaeology Officer Comment 2023	
Archaeology RAG Assessment 2021	Amber
Archaeology Officer Comment 2021	Known archaeology of prehistoric and Roman date known in the vicinity
Accessibility RAG Assessment	Green
Accessibility Comment	Good accessibility to key local services, transport, and employment opportunities.
Site Access RAG Assessment 2026	
Site Access Officer Comment 2026	
Site Access RAG Assessment 2025	
Site Access Officer Comment 2025	
Site Access RAG Assessment 2023	
Site Access Officer Comment 2023	
Site Access RAG Assessment 2021	Amber
Site Access Officer Comment 2021	The proposed site is acceptable in principle subject to detailed design.
Transport and Roads RAG Assessment 2026	

Transport and Roads Guideline Comments 2026	
Transport and Roads RAG Assessment 2025	
Transport and Roads Guideline Comments 2025	
Transport and Roads RAG Assessment 2023	
Transport and Roads Guideline Comments 2023	
Transport and Roads RAG Assessment 2021	Amber
Transport and Roads Guideline Comments 2021	May require localised highway improvements and walking, cycling and Passenger Transport infrastructure.
Noise, Vibration, Odour and Light Pollution RAG Assessment 2026	
Noise, Vibration, Odour and Light Pollution Guideline Comments 2026	
Noise, Vibration, Odour and Light Pollution RAG Assessment 2025	
Noise, Vibration, Odour and Light Pollution Guideline Comments 2025	
Noise, Vibration, Odour and Light Pollution RAG Assessment 2023	
Noise, Vibration, Odour and Light Pollution Guideline Comments 2023	
Noise, Vibration, Odour and Light Pollution RAG Assessment 2021	Amber
Noise, Vibration, Odour and Light Pollution Guideline Comments 2021	The site is capable of being developed to provide healthy internal and external environments in regard to noise / vibration/ odour/ Light Pollution after careful site layout, design and mitigation
AQMA RAG Assessment 2026	
Air Quality Officer Comment 2026	
AQMA RAG Assessment 2025	
Air Quality Officer Comment 2025	
AQMA RAG Assessment 2023	
Air Quality Officer Comment 2023	

AQMA RAG Assessment 2021	Amber
Air Quality Officer Comment 2021	Site does not lie within an AQMA. Will require inherent / intrinsic designed in AQ mitigation eg EVCP - City
Contaminated Land RAG Assessment 2026	
Contaminated Land Officer Comments 2026	
Contaminated Land RAG Assessment 2025	
Contaminated Land Officer Comments 2025	
Contaminated Land RAG Assessment 2023	
Contaminated Land Officer Comments 2023	
Contaminated Land RAG Assessment 2021	Amber
Contaminated Land Officer Comments 2021	Brownfield site, contamination expected, conditions required
Overall Suitability Score	Amber
Further constraints	-
Agricultural Land Classification Grade 1 (% overlap)	0
Agricultural Land Classification Grade 2 (% overlap)	0
Agricultural Land Classification Grade 3 (% overlap)	0
Agricultural Land Classification Grade 4 (% overlap)	0
Agricultural Land Classification Non Agricultural (% overlap)	0
Agricultural Land Classification Urban (% overlap)	100.00
Source Protection Zone (% overlap)	0
Highways England Zones	Cambridge
Available	-
Is the site controlled by a developer or landowner who has expressed an intention to develop?	The site is an existing Local Plan Allocation but there is no evidence it is currently available.
Are there known legal or ownership impediments to development?	No

Is there planning permission to develop the site?	No relevant recent planning history
When will the site be available for development?	0-5 Years
Available RAG	Red
Achievable	-
Is there a reasonable prospect that the site will be developed?	The land has not been promoted by the landowner and or developer and therefore it is not known to be available for development. The site has a low existing use value and development is likely to be economically viable at an appropriate density.
Achievable RAG	Amber
Capacity	-
Prevailing Density (weighted) (dwellings per ha)	49
Residential capacity at prevailing density	109
Estimated employment space (m2)	
Estimated start date	0-5 Years
Estimated annual build-out rate (pa)	40-75
Development completion timescales (years)	0-5 Years

Clifton Road Industrial Park, Cambridge



A map of Clifton Road Industrial Park, Cambridge

Site information	-
Site ID	115698
HELAA Site ID	48068
Suitable Site Area (ha)	4.22
Ward/Parish	Coleridge
Greenfield or Previously Developed?	Previously Developed Land
Category of site	Densification of existing urban areas
Category of settlement	Cambridge City
Current use(s)	
Proposed development	Residential
Proposed employment floorspace (m2)	0
Proposed residential capacity	80
Suitability	-
Adopted Development Plan Policies RAG 2026	Green

Adopted Development Plan Policies Comment 2026	Development of the site is compatible and consistent with Development Plan policies and allocations.
Flood Risk RAG Assessment 2026	Amber
Flood Risk Officer Comment 2026	Flood Zones: Site is wholly within Flood Zone 1. Climate Change: Site is not within a climate-change-adjusted flood zone. Surface Water: 15% lies in a 1-in-1,000-year event. 3% lies in a 1-in-100-year event. 7% lies in a 1-in-30-year event.
Flood Risk RAG Assessment 2025	Amber
Flood Risk Officer Comment 2025	Flood Zone: Wholly in Flood Zone 1. Surface Water Flooding: 7% lies in a 1 in 30 year event. 3% lies in a 1 in 100 year event. 15% lies in a 1 in 1000 year event
Flood Risk RAG Assessment 2023	
Flood Risk Officer Comment 2023	
Flood Risk RAG Assessment 2021	Amber
Flood Risk Officer Comment 2021	The site contains areas at high, or medium risk from surface water flooding and/or the site contains some land in Flood Zones 2 and/or 3 but there is sufficient land in Flood Zone 1 to accommodate at least 5 additional dwellings or an increase of 500 square metres of employment floorspace.
Landscape RAG Assessment 2026	
Landscape Comment 2026	
Landscape RAG Assessment 2025	
Landscape Comment 2025	
Landscape RAG Assessment 2023	
Landscape Comment 2023	
Landscape RAG Assessment 2021	Green
Landscape Comment 2021	The site is an already developed industrial estate. Development on this site is acceptable in landscape terms. In accordance with the current Local Plan an SPD for the Allocation Site must be prepared prior to any major applications coming forward. Any proposal will be subject to delivery of acceptable Public Open Space and an appropriate landscape buffer.
Biodiversity and Geodiversity RAG Assessment 2026	
Biodiversity and Geodiversity Officer Comments 2026	

Biodiversity and Geodiversity Guideline Comments 2026	
Biodiversity and Geodiversity RAG Assessment 2025	
Biodiversity and Geodiversity Officer Comments 2025	
Biodiversity and Geodiversity Guideline Comments 2025	
Biodiversity and Geodiversity RAG Assessment 2023	
Biodiversity and Geodiversity Officer Comments 2023	
Biodiversity and Geodiversity Guideline Comments 2023	
Biodiversity and Geodiversity RAG Assessment 2021	Green
Biodiversity and Geodiversity Officer Comments 2021	All residential developments will require an assessment of recreational impact on nearby SSSIs. Otherwise site likely to be of low ecological value. Buildings may support roosting bats (if suitable).
Biodiversity and Geodiversity Guideline Comments 2021	Development of the site would not have a detrimental impact on any designated site, or those with a regional or local protection.
Policy RAG Rating 2026	Green
Policy Officer Comment 2026	The site does not contain protected open space, but it is adjacent to or within 50m of an open space designation. However, development of the site is already permissible in line with Policy 27 (M2 - Clifton Road Area Maximum) of the Cambridge Local Plan 2018.
Policy RAG Rating 2025	
Policy Officer Comment 2025	
Policy RAG Rating 2023	
Policy Officer Comment 2023	
Policy RAG Rating 2021	Green
Policy Officer Comments 2021	Site is not on protected open space designation. Any impact of the proposed development could be reasonably mitigated or compensated.
Historic Environment RAG Assessment 2026	
Historic Environment Comments 2026	
Historic Environment RAG Assessment 2025	

Historic Environment Comments 2025	
Historic Environment RAG Assessment 2023	
Historic Environment Comments 2023	
Historic Environment RAG Assessment 2021	Amber
Historic Environment Comments 2021	Development has the potential to impact on the setting of the Grade II listed Cambridge Station buildings, and surrounding part of Central conservation area. However, given scale and nature of other recent development nearby, this is unlikely to be significant and could be reasonably mitigated.
Archaeology RAG Assessment 2026	
Archaeology Officer Comment 2026	
Archaeology RAG Assessment 2025	
Archaeology Officer Comment 2025	
Archaeology RAG Assessment 2023	
Archaeology Officer Comment 2023	
Archaeology RAG Assessment 2021	Amber
Archaeology Officer Comment 2021	Prehistoric and Roman archaeology is recorded in the vicinity
Accessibility RAG Assessment	Green
Accessibility Comment	Good accessibility to key local services, transport, and employment opportunities.
Site Access RAG Assessment 2026	
Site Access Officer Comment 2026	
Site Access RAG Assessment 2025	
Site Access Officer Comment 2025	
Site Access RAG Assessment 2023	
Site Access Officer Comment 2023	
Site Access RAG Assessment 2021	Amber
Site Access Officer Comment 2021	The proposed site is acceptable in principle subject to detailed design.
Transport and Roads RAG Assessment 2026	

Transport and Roads Guideline Comments 2026	
Transport and Roads RAG Assessment 2025	
Transport and Roads Guideline Comments 2025	
Transport and Roads RAG Assessment 2023	
Transport and Roads Guideline Comments 2023	
Transport and Roads RAG Assessment 2021	Amber
Transport and Roads Guideline Comments 2021	Any potential impact on the functioning of trunk roads and/or local roads could be reasonably mitigated.
Noise, Vibration, Odour and Light Pollution RAG Assessment 2026	
Noise, Vibration, Odour and Light Pollution Guideline Comments 2026	
Noise, Vibration, Odour and Light Pollution RAG Assessment 2025	
Noise, Vibration, Odour and Light Pollution Guideline Comments 2025	
Noise, Vibration, Odour and Light Pollution RAG Assessment 2023	
Noise, Vibration, Odour and Light Pollution Guideline Comments 2023	
Noise, Vibration, Odour and Light Pollution RAG Assessment 2021	Red
Noise, Vibration, Odour and Light Pollution Guideline Comments 2021	Nearby adjacent Railway (Railway Station and New 24/7 Train Stabblings and servicing facilities to West) & Industrial / Commercial (train Stabling and 24/7 Royal Mail depot)- BIG Constraint - Commercial / Leisure Noise Agent for Change Principles) - may be ambitious in terms of numbers acceptable in principle subject to appropriate zoning / layout of residential, detailed design considerations and mitigation. Network Rail future plans for area - All PD
AQMA RAG Assessment 2026	
Air Quality Officer Comment 2026	
AQMA RAG Assessment 2025	
Air Quality Officer Comment 2025	
AQMA RAG Assessment 2023	

Air Quality Officer Comment 2023	
AQMA RAG Assessment 2021	Amber
Air Quality Officer Comment 2021	Site lies within an AQMA - Will require inherent / intrinsic designed in AQ mitigation
Contaminated Land RAG Assessment 2026	
Contaminated Land Officer Comments 2026	
Contaminated Land RAG Assessment 2025	
Contaminated Land Officer Comments 2025	
Contaminated Land RAG Assessment 2023	
Contaminated Land Officer Comments 2023	
Contaminated Land RAG Assessment 2021	Amber
Contaminated Land Officer Comments 2021	Brownfield site, contamination expected, conditions required
Overall Suitability Score	Red
Further constraints	-
Agricultural Land Classification Grade 1 (% overlap)	0
Agricultural Land Classification Grade 2 (% overlap)	0
Agricultural Land Classification Grade 3 (% overlap)	0
Agricultural Land Classification Grade 4 (% overlap)	0
Agricultural Land Classification Non Agricultural (% overlap)	0
Agricultural Land Classification Urban (% overlap)	100.00
Source Protection Zone (% overlap)	0
Highways England Zones	Cambridge
Available	-
Is the site controlled by a developer or landowner who has expressed an intention to develop?	The site was submitted by the landowner and/or site promoter who has confirmed that the site is available for development in the timescales indicated.

Are there known legal or ownership impediments to development?	No
Is there planning permission to develop the site?	No relevant recent planning history
When will the site be available for development?	0-5 Years
Available RAG	Green
Achievable	-
Is there a reasonable prospect that the site will be developed?	The land has been promoted by the landowner and or developer and is known to be available for development. The site has a low existing use value and residential development is likely to be economically viable at an appropriate density.
Achievable RAG	Green
Capacity	-
Prevailing Density (weighted) (dwellings per ha)	104
Residential capacity at prevailing density	350
Estimated employment space (m2)	
Estimated start date	0-5 Years
Estimated annual build-out rate (pa)	40-75
Development completion timescales (years)	0-5 Years

Cherry Hinton Telephone Exchange, 152 Coleridge Road, Cambridge



A map of Cherry Hinton Telephone Exchange, 152 Coleridge Road, Cambridge

Site information	-
Site ID	115699
HELAA Site ID	40100
Suitable Site Area (ha)	0.2
Ward/Parish	Coleridge
Greenfield or Previously Developed?	Previously Developed Land
Category of site	Densification of existing urban areas
Category of settlement	Cambridge City
Current use(s)	
Proposed development	Residential
Proposed employment floorspace (m ²)	0
Proposed residential capacity	33
Suitability	-
Adopted Development Plan Policies RAG 2026	Green

Adopted Development Plan Policies Comment 2026	Development of the site is compatible and consistent with Development Plan policies and allocations.
Flood Risk RAG Assessment 2026	Amber
Flood Risk Officer Comment 2026	Flood Zones: Site is wholly within Flood Zone 1. Climate Change: Site is not within a climate-change-adjusted flood zone. Surface Water: 16% lies in a 1-in-1,000-year event. 1% lies in a 1-in-100-year event. 66% lies in a 1-in-30-year event.
Flood Risk RAG Assessment 2025	Amber
Flood Risk Officer Comment 2025	Flood Zone: Wholly in Flood Zone 1. Surface Water Flooding: 66% lies in a 1 in 30 year event. 1% lies in a 1 in 100 year event. 16% lies in a 1 in 1000 year event
Flood Risk RAG Assessment 2023	
Flood Risk Officer Comment 2023	
Flood Risk RAG Assessment 2021	Amber
Flood Risk Officer Comment 2021	The site is within flood zone 2 (taking into account climate change) and/or is within an area at high, medium or low risk from surface water flooding.
Landscape RAG Assessment 2026	
Landscape Comment 2026	
Landscape RAG Assessment 2025	
Landscape Comment 2025	
Landscape RAG Assessment 2023	
Landscape Comment 2023	
Landscape RAG Assessment 2021	Amber
Landscape Comment 2021	The impact of removing the industrial/commercial element from this site and converting it to residential would be an improvement to the overall environment of the area. Consideration must given however, to provision of space for the planting of large species trees to achieve, in time, a layered effect of tree tops and roofs.
Biodiversity and Geodiversity RAG Assessment 2026	
Biodiversity and Geodiversity Officer Comments 2026	
Biodiversity and Geodiversity Guideline Comments 2026	

Biodiversity and Geodiversity RAG Assessment 2025	
Biodiversity and Geodiversity Officer Comments 2025	
Biodiversity and Geodiversity Guideline Comments 2025	
Biodiversity and Geodiversity RAG Assessment 2023	
Biodiversity and Geodiversity Officer Comments 2023	
Biodiversity and Geodiversity Guideline Comments 2023	
Biodiversity and Geodiversity RAG Assessment 2021	Green
Biodiversity and Geodiversity Officer Comments 2021	No direct impact on designated sites. Potential for Biodiversity enhancement with appropriate landscaping.
Biodiversity and Geodiversity Guideline Comments 2021	Development of the site would not have a detrimental impact on any designated site, or those with a regional or local protection.
Policy RAG Rating 2026	Green
Policy Officer Comment 2026	The site is wholly outside of protected open space. Detrimental open space impacts are not anticipated. Development of the site is already permissible in line with Policy 27 (R8 - 149 Cherry Hinton Road and Telephone Ex) of the Cambridge Local Plan 2018.
Policy RAG Rating 2025	
Policy Officer Comment 2025	
Policy RAG Rating 2023	
Policy Officer Comment 2023	
Policy RAG Rating 2021	Green
Policy Officer Comments 2021	Site is not on protected open space designation. Any impact of the proposed development could be reasonably mitigated or compensated.
Historic Environment RAG Assessment 2026	
Historic Environment Comments 2026	
Historic Environment RAG Assessment 2025	
Historic Environment Comments 2025	
Historic Environment RAG Assessment 2023	

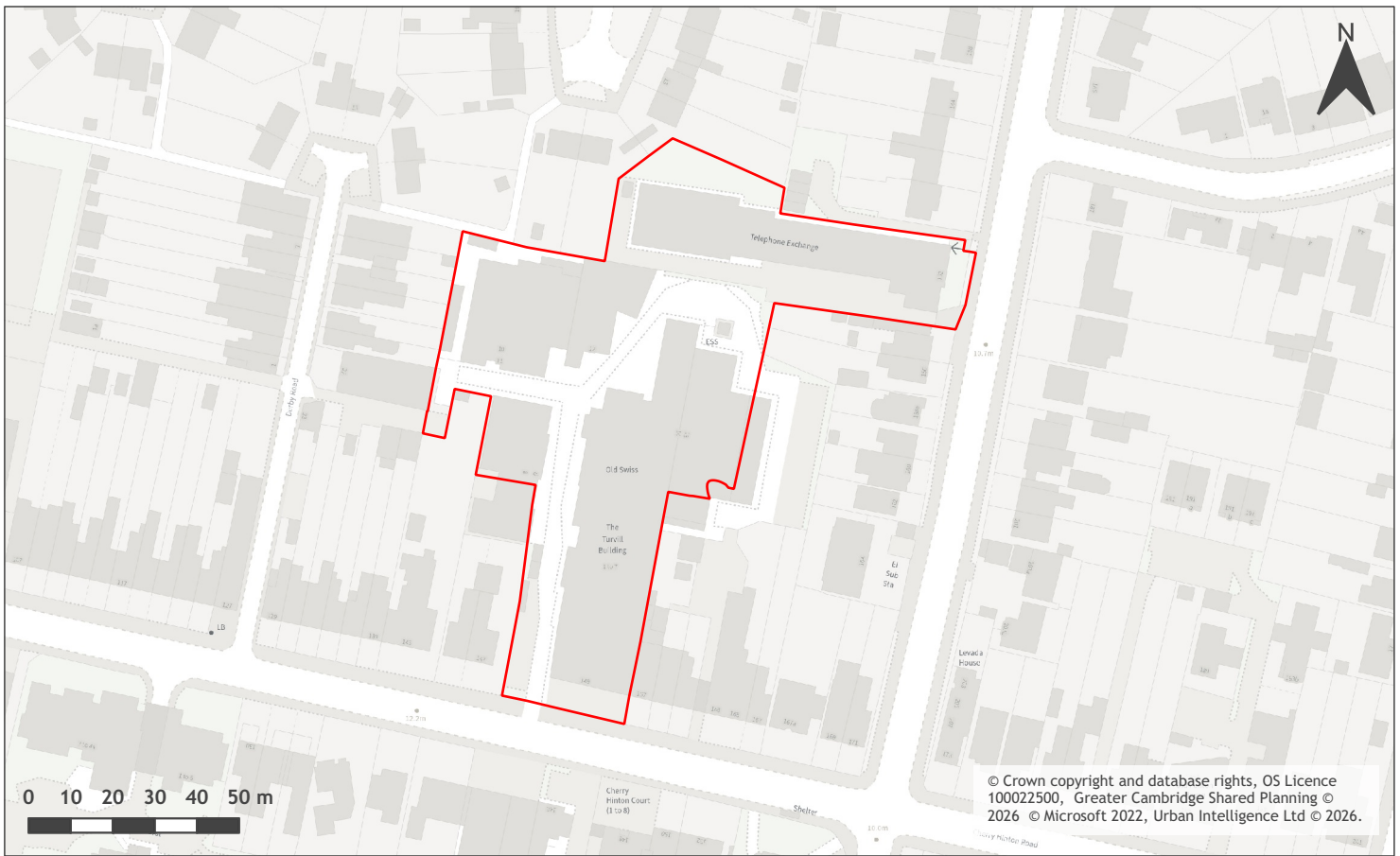
Historic Environment Comments 2023	
Historic Environment RAG Assessment 2021	Amber
Historic Environment Comments 2021	Development of the site could have a detrimental impact on the front building which is potentially a non-designated heritage asset. Development is recommended to be restricted to the rear of the site.
Archaeology RAG Assessment 2026	
Archaeology Officer Comment 2026	
Archaeology RAG Assessment 2025	
Archaeology Officer Comment 2025	
Archaeology RAG Assessment 2023	
Archaeology Officer Comment 2023	
Archaeology RAG Assessment 2021	Green
Archaeology Officer Comment 2021	No significant archaeology is likely to survive in this area
Accessibility RAG Assessment	Green
Accessibility Comment	Good accessibility to key local services, transport, and employment opportunities.
Site Access RAG Assessment 2026	
Site Access Officer Comment 2026	
Site Access RAG Assessment 2025	
Site Access Officer Comment 2025	
Site Access RAG Assessment 2023	
Site Access Officer Comment 2023	
Site Access RAG Assessment 2021	Amber
Site Access Officer Comment 2021	The proposed site is acceptable in principle subject to detailed design.
Transport and Roads RAG Assessment 2026	
Transport and Roads Guideline Comments 2026	
Transport and Roads RAG Assessment 2025	
Transport and Roads Guideline Comments 2025	

Transport and Roads RAG Assessment 2023	
Transport and Roads Guideline Comments 2023	
Transport and Roads RAG Assessment 2021	Green
Transport and Roads Guideline Comments 2021	Development of the site will not have a detrimental impact on the functioning of trunk roads and/or local roads.
Noise, Vibration, Odour and Light Pollution RAG Assessment 2026	
Noise, Vibration, Odour and Light Pollution Guideline Comments 2026	
Noise, Vibration, Odour and Light Pollution RAG Assessment 2025	
Noise, Vibration, Odour and Light Pollution Guideline Comments 2025	
Noise, Vibration, Odour and Light Pollution RAG Assessment 2023	
Noise, Vibration, Odour and Light Pollution Guideline Comments 2023	
Noise, Vibration, Odour and Light Pollution RAG Assessment 2021	Amber
Noise, Vibration, Odour and Light Pollution Guideline Comments 2021	Nearby Industrial/ Commercial (Swiss laundry/substation -Swiss L likely to part of dev site?) Cherry Hinton Rd traffic noise. The proposed site will be affected by road traffic noise and by noise from nearby industrial/commercial activities , but is acceptable in principle subject to appropriate detailed design considerations and mitigation. The site is capable of being developed in regard to vibration/ odour/ light Pollution after careful site layout, design and mitigation.
AQMA RAG Assessment 2026	
Air Quality Officer Comment 2026	
AQMA RAG Assessment 2025	
Air Quality Officer Comment 2025	
AQMA RAG Assessment 2023	
Air Quality Officer Comment 2023	
AQMA RAG Assessment 2021	Amber
Air Quality Officer Comment 2021	Will require inherent / intrinsic designed in AQ mitigation.

Contaminated Land RAG Assessment 2026	
Contaminated Land Officer Comments 2026	
Contaminated Land RAG Assessment 2025	
Contaminated Land Officer Comments 2025	
Contaminated Land RAG Assessment 2023	
Contaminated Land Officer Comments 2023	
Contaminated Land RAG Assessment 2021	Amber
Contaminated Land Officer Comments 2021	Brownfield site, contamination expected and planning conditions required
Overall Suitability Score	Amber
Further constraints	-
Agricultural Land Classification Grade 1 (% overlap)	0
Agricultural Land Classification Grade 2 (% overlap)	0
Agricultural Land Classification Grade 3 (% overlap)	0
Agricultural Land Classification Grade 4 (% overlap)	0
Agricultural Land Classification Non Agricultural (% overlap)	0
Agricultural Land Classification Urban (% overlap)	100.00
Source Protection Zone (% overlap)	0
Highways England Zones	Cambridge
Available	-
Is the site controlled by a developer or landowner who has expressed an intention to develop?	The site was submitted by the landowner and/or site promoter who has confirmed that the site is available for development in the timescales indicated.
Are there known legal or ownership impediments to development?	No
Is there planning permission to develop the site?	No relevant recent planning history

When will the site be available for development?	0-5 Years
Available RAG	Green
Achievable	-
Is there a reasonable prospect that the site will be developed?	The land has been promoted by the landowner and or developer and is known to be available for development. The site has a low existing use value and residential development is likely to be economically viable at an appropriate density.
Achievable RAG	Green
Capacity	-
Prevailing Density (weighted) (dwellings per ha)	30
Residential capacity at prevailing density	6
Estimated employment space (m2)	
Estimated start date	0-5 Years
Estimated annual build-out rate (pa)	40-75
Development completion timescales (years)	0-5 Years

149 Cherry Hinton Road and Telephone Ex (Policy 27 - R8)



A map of 149 Cherry Hinton Road and Telephone Ex (Policy 27 - R8)

Site information	-
Site ID	115700
HELAA Site ID	OS040
Suitable Site Area (ha)	0.75
Ward/Parish	Coleridge
Greenfield or Previously Developed?	Previously Developed Land
Category of site	Densification of existing urban areas
Category of settlement	Cambridge City
Current use(s)	
Proposed development	Residential
Proposed employment floorspace (m ²)	0
Proposed residential capacity	33
Suitability	-
Adopted Development Plan Policies RAG 2026	Green

Adopted Development Plan Policies Comment 2026	Development of the site is compatible and consistent with Development Plan policies and allocations.
Flood Risk RAG Assessment 2026	Amber
Flood Risk Officer Comment 2026	Flood Zones: Site is wholly within Flood Zone 1. Climate Change: Site is not within a climate-change-adjusted flood zone. Surface Water: 40% lies in a 1-in-1,000-year event. 3% lies in a 1-in-100-year event. 23% lies in a 1-in-30-year event.
Flood Risk RAG Assessment 2025	Amber
Flood Risk Officer Comment 2025	Flood Zone: Wholly in Flood Zone 1. Surface Water Flooding: 23% lies in a 1 in 30 year event. 3% lies in a 1 in 100 year event. 40% lies in a 1 in 1000 year event
Flood Risk RAG Assessment 2023	
Flood Risk Officer Comment 2023	
Flood Risk RAG Assessment 2021	Amber
Flood Risk Officer Comment 2021	The site contains areas at high, or medium risk from surface water flooding and/or the site contains some land in Flood Zones 2 and/or 3 but there is sufficient land in Flood Zone 1 to accommodate at least 5 additional dwellings or an increase of 500 square metres of employment floorspace.
Landscape RAG Assessment 2026	
Landscape Comment 2026	
Landscape RAG Assessment 2025	
Landscape Comment 2025	
Landscape RAG Assessment 2023	
Landscape Comment 2023	
Landscape RAG Assessment 2021	Green
Landscape Comment 2021	The site is a large industrial/commercial estate with frontages onto both Cherry Hinton Road and Coleridge Road. Landscape impacts are Low. Any development should be mindful of avoiding negative impacts on nearby offsite trees. Adequate space needed for large tree planting.
Biodiversity and Geodiversity RAG Assessment 2026	
Biodiversity and Geodiversity Officer Comments 2026	
Biodiversity and Geodiversity Guideline Comments 2026	

Biodiversity and Geodiversity RAG Assessment 2025	
Biodiversity and Geodiversity Officer Comments 2025	
Biodiversity and Geodiversity Guideline Comments 2025	
Biodiversity and Geodiversity RAG Assessment 2023	
Biodiversity and Geodiversity Officer Comments 2023	
Biodiversity and Geodiversity Guideline Comments 2023	
Biodiversity and Geodiversity RAG Assessment 2021	Green
Biodiversity and Geodiversity Officer Comments 2021	Unlikely to impact on designated sites for nature conservation. Consultation with Natural England unlikely to be required. Boundary trees and hedgerows may be of ecological value. Buildings and hardstanding unlikely to be of ecological value, although buildings may support roosting bats (if suitable). Opportunities to deliver biodiversity net gain.
Biodiversity and Geodiversity Guideline Comments 2021	Development of the site would not have a detrimental impact on any designated site, or those with a regional or local protection.
Policy RAG Rating 2026	Green
Policy Officer Comment 2026	The site is wholly outside of protected open space. Detrimental open space impacts are not anticipated. Development of the site is already permissible in line with Policy 27 (R8 - 149 Cherry Hinton Road and Telephone Ex) of the Cambridge Local Plan 2018.
Policy RAG Rating 2025	
Policy Officer Comment 2025	
Policy RAG Rating 2023	
Policy Officer Comment 2023	
Policy RAG Rating 2021	Green
Policy Officer Comments 2021	Site is not on protected open space designation. Any impact of the proposed development could be reasonably mitigated or compensated.
Historic Environment RAG Assessment 2026	
Historic Environment Comments 2026	
Historic Environment RAG Assessment 2025	
Historic Environment Comments 2025	

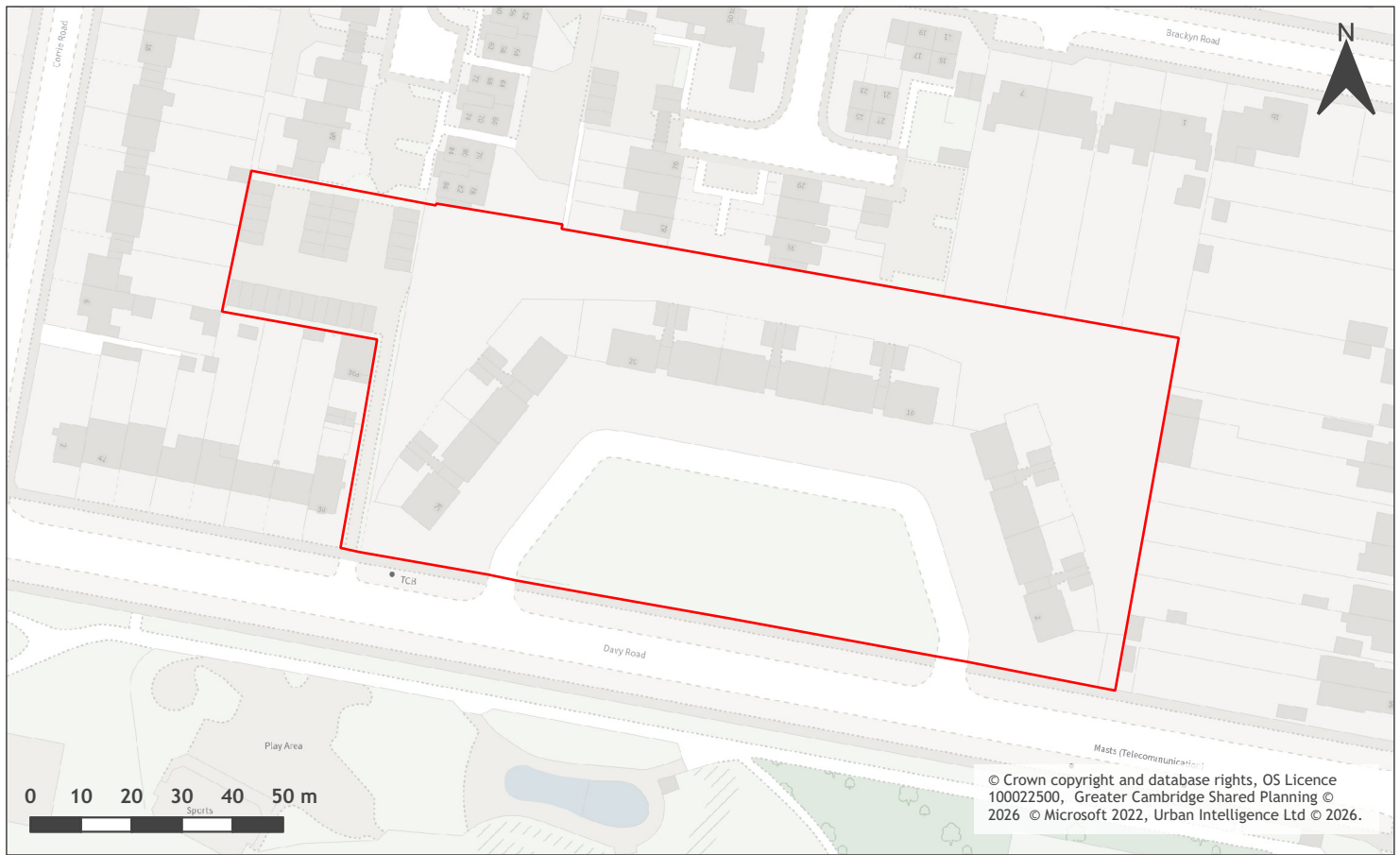
Historic Environment RAG Assessment 2023	
Historic Environment Comments 2023	
Historic Environment RAG Assessment 2021	Green
Historic Environment Comments 2021	Development of the site would have either a neutral or positive impact, but importantly not have a detrimental impact on any designated or non-designated heritage assets.
Archaeology RAG Assessment 2026	
Archaeology Officer Comment 2026	
Archaeology RAG Assessment 2025	
Archaeology Officer Comment 2025	
Archaeology RAG Assessment 2023	
Archaeology Officer Comment 2023	
Archaeology RAG Assessment 2021	Green
Archaeology Officer Comment 2021	Previously advised no archaeological interest
Accessibility RAG Assessment	Green
Accessibility Comment	Good accessibility to key local services, transport, and employment opportunities.
Site Access RAG Assessment 2026	
Site Access Officer Comment 2026	
Site Access RAG Assessment 2025	
Site Access Officer Comment 2025	
Site Access RAG Assessment 2023	
Site Access Officer Comment 2023	
Site Access RAG Assessment 2021	Amber
Site Access Officer Comment 2021	The proposed site is acceptable in principle subject to detailed design.
Transport and Roads RAG Assessment 2026	
Transport and Roads Guideline Comments 2026	
Transport and Roads RAG Assessment 2025	

Transport and Roads Guideline Comments 2025	
Transport and Roads RAG Assessment 2023	
Transport and Roads Guideline Comments 2023	
Transport and Roads RAG Assessment 2021	Amber
Transport and Roads Guideline Comments 2021	Any potential impact on the functioning of trunk roads and/or local roads could be reasonably mitigated.
Noise, Vibration, Odour and Light Pollution RAG Assessment 2026	
Noise, Vibration, Odour and Light Pollution Guideline Comments 2026	
Noise, Vibration, Odour and Light Pollution RAG Assessment 2025	
Noise, Vibration, Odour and Light Pollution Guideline Comments 2025	
Noise, Vibration, Odour and Light Pollution RAG Assessment 2023	
Noise, Vibration, Odour and Light Pollution Guideline Comments 2023	
Noise, Vibration, Odour and Light Pollution RAG Assessment 2021	Amber
Noise, Vibration, Odour and Light Pollution Guideline Comments 2021	The site is affected by industrial noise from the telephone exchange to North of Coleridge Rd but is acceptable in principle subject to detailed design considerations and mitigation.
AQMA RAG Assessment 2026	
Air Quality Officer Comment 2026	
AQMA RAG Assessment 2025	
Air Quality Officer Comment 2025	
AQMA RAG Assessment 2023	
Air Quality Officer Comment 2023	
AQMA RAG Assessment 2021	Amber
Air Quality Officer Comment 2021	Site does not lie within an AQMA. Will require inherent / intrinsic designed in AQ mitigation eg EVCP - City

Contaminated Land RAG Assessment 2026	
Contaminated Land Officer Comments 2026	
Contaminated Land RAG Assessment 2025	
Contaminated Land Officer Comments 2025	
Contaminated Land RAG Assessment 2023	
Contaminated Land Officer Comments 2023	
Contaminated Land RAG Assessment 2021	Amber
Contaminated Land Officer Comments 2021	Brownfield site, contamination expected, conditions required
Overall Suitability Score	Amber
Further constraints	-
Agricultural Land Classification Grade 1 (% overlap)	0
Agricultural Land Classification Grade 2 (% overlap)	0
Agricultural Land Classification Grade 3 (% overlap)	0
Agricultural Land Classification Grade 4 (% overlap)	0
Agricultural Land Classification Non Agricultural (% overlap)	0
Agricultural Land Classification Urban (% overlap)	100.00
Source Protection Zone (% overlap)	0
Highways England Zones	Cambridge
Available	-
Is the site controlled by a developer or landowner who has expressed an intention to develop?	The site is an existing Local Plan Allocation but there is no evidence it is currently available.
Are there known legal or ownership impediments to development?	No
Is there planning permission to develop the site?	No relevant recent planning history

When will the site be available for development?	0-5 Years
Available RAG	Red
Achievable	-
Is there a reasonable prospect that the site will be developed?	The land has not been promoted by the landowner and or developer and therefore it is not known to be available for development. The site has a low existing use value and development is likely to be economically viable at an appropriate density.
Achievable RAG	Amber
Capacity	-
Prevailing Density (weighted) (dwellings per ha)	36
Residential capacity at prevailing density	25
Estimated employment space (m2)	
Estimated start date	0-5 Years
Estimated annual build-out rate (pa)	40-75
Development completion timescales (years)	0-5 Years

2 - 28 Davy Road, Cambridge and Garage Blocks



A map of 2 - 28 Davy Road, Cambridge and Garage Blocks

Site information	-
Site ID	116106
HELAA Site ID	200823
Suitable Site Area (ha)	1.19
Ward/Parish	Coleridge
Greenfield or Previously Developed?	Previously developed land
Category of site	Densification of existing urban areas
Category of settlement	Cambridge City
Current use(s)	Residential
Proposed development	Residential
Proposed employment floorspace (m ²)	0
Proposed residential capacity	90
Suitability	-
Adopted Development Plan Policies RAG 2026	Green

Adopted Development Plan Policies Comment 2026	Development of the site is compatible and consistent with Development Plan policies and allocations.
Flood Risk RAG Assessment 2026	Amber
Flood Risk Officer Comment 2026	Flood Zones: Site is wholly within Flood Zone 1. Climate Change: Site is not within a climate-change-adjusted flood zone. Surface Water: 12% lies in a 1-in-1,000-year event. 3% lies in a 1-in-100-year event. 13% lies in a 1-in-30-year event.
Flood Risk RAG Assessment 2025	Amber
Flood Risk Officer Comment 2025	Flood zone: Wholly in Flood Zone 1; Surface water flooding: 13% lies in a 1 in 30 year event, 3% lies in a 1 in 100 year event and 12% lies in a 1 in 1000 year event
Flood Risk RAG Assessment 2023	
Flood Risk Officer Comment 2023	
Flood Risk RAG Assessment 2021	
Flood Risk Officer Comment 2021	
Landscape RAG Assessment 2026	
Landscape Comment 2026	
Landscape RAG Assessment 2025	Amber
Landscape Comment 2025	A part of the site is protected open space, which contributes positively to the character of the wider neighbourhood. Any proposals to remove the open space would lead to an objection in principle. Mature trees on the site should also be retained to protect existing character. Context-driven development that supports placemaking and responds to the above constraints could be accommodated elsewhere on the site.
Landscape RAG Assessment 2023	
Landscape Comment 2023	
Landscape RAG Assessment 2021	
Landscape Comment 2021	
Biodiversity and Geodiversity RAG Assessment 2026	
Biodiversity and Geodiversity Officer Comments 2026	
Biodiversity and Geodiversity Guideline Comments 2026	

Biodiversity and Geodiversity RAG Assessment 2025	Green
Biodiversity and Geodiversity Officer Comments 2025	A development of the size and scale described would not provide any specific ecological risks to statutory or non-statutory designated sites. However, this does not remove the likelihood of protected and priority species being impacted, nor that a development of the type described would likely be eligible for mandatory biodiversity net gain.
Biodiversity and Geodiversity Guideline Comments 2025	Development of the site would not have a detrimental impact on any designated site, or those with a regional or local protection.
Biodiversity and Geodiversity RAG Assessment 2023	
Biodiversity and Geodiversity Officer Comments 2023	
Biodiversity and Geodiversity Guideline Comments 2023	
Biodiversity and Geodiversity RAG Assessment 2021	
Biodiversity and Geodiversity Officer Comments 2021	
Biodiversity and Geodiversity Guideline Comments 2021	
Policy RAG Rating 2026	Amber
Policy Officer Comment 2026	The site contains protected open space. However, given the size of the site and the scale of development, detrimental impacts could be reasonably mitigated, or the loss of the open space could be fully compensated locally as part of the site's development.
Policy RAG Rating 2025	Amber
Policy Officer Comment 2025	Site is part located on protected open space (Amenity Green Space) and part located on residential land. Development protected open space is not acceptable in principle. Development on urban land may be acceptable. Within 50m of Amenity Green Space. Within 50m of an Outdoor Sports Facility. Within 50m of a Protected Open Space.
Policy RAG Rating 2023	
Policy Officer Comment 2023	
Policy RAG Rating 2021	
Policy Officer Comments 2021	
Historic Environment RAG Assessment 2026	
Historic Environment Comments 2026	
Historic Environment RAG Assessment 2025	Green

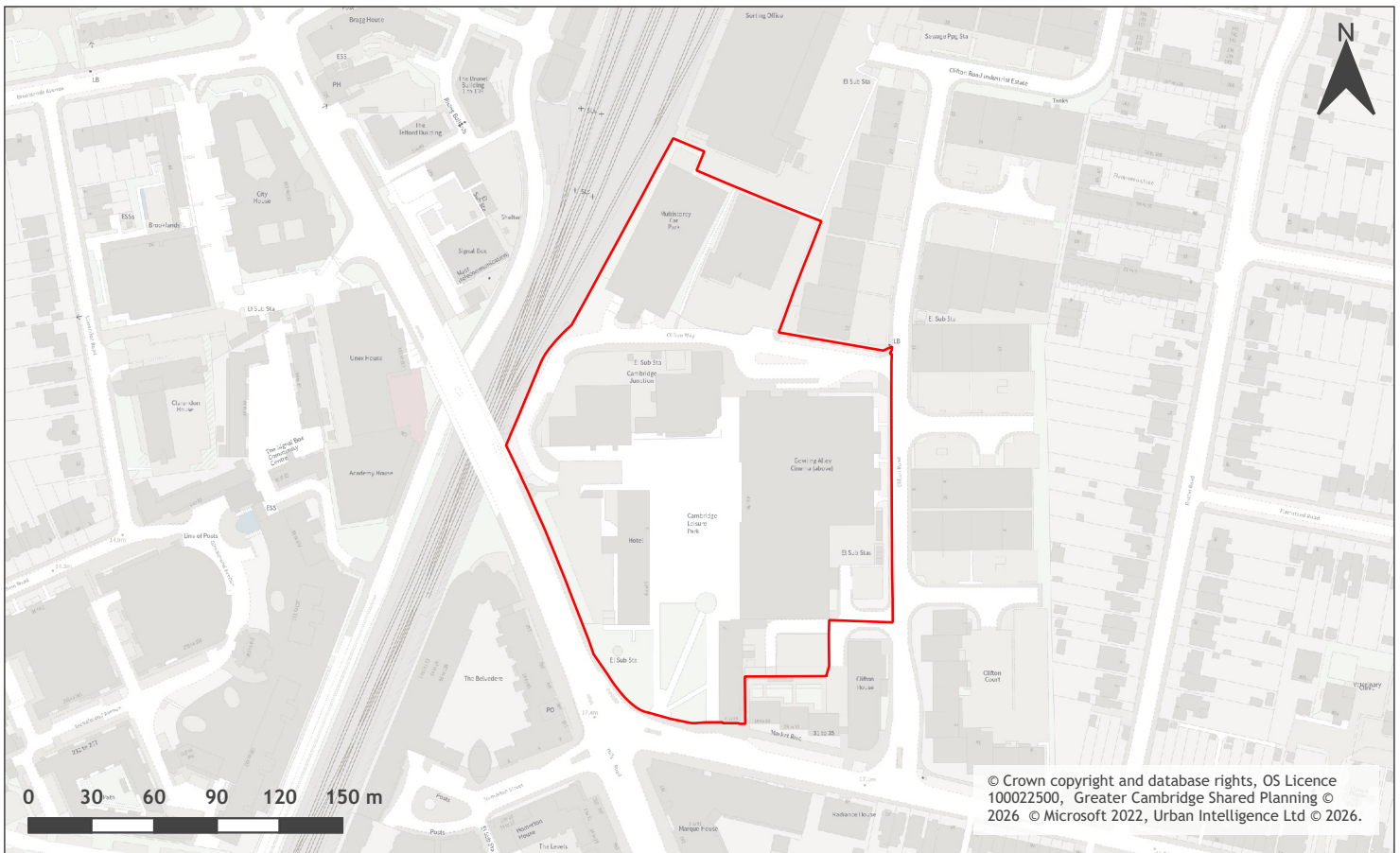
Historic Environment Comments 2025	Development of the site would have either a neutral or positive impact, but importantly not have a detrimental impact on any designated or non-designated heritage assets.
Historic Environment RAG Assessment 2023	
Historic Environment Comments 2023	
Historic Environment RAG Assessment 2021	
Historic Environment Comments 2021	
Archaeology RAG Assessment 2026	
Archaeology Officer Comment 2026	
Archaeology RAG Assessment 2025	Amber
Archaeology Officer Comment 2025	Evidence for Roman activity is recorded in the vicinity. Archaeological investigations would be necessary in advance of development.
Archaeology RAG Assessment 2023	
Archaeology Officer Comment 2023	
Archaeology RAG Assessment 2021	
Archaeology Officer Comment 2021	
Accessibility RAG Assessment	Green
Accessibility Comment	Good accessibility to key local services, transport, and employment opportunities.
Site Access RAG Assessment 2026	
Site Access Officer Comment 2026	
Site Access RAG Assessment 2025	Amber
Site Access Officer Comment 2025	The site has been scored as Amber. The site is acceptable in principle, subject to further detail and consultation at the planning application stage.
Site Access RAG Assessment 2023	
Site Access Officer Comment 2023	
Site Access RAG Assessment 2021	
Site Access Officer Comment 2021	
Transport and Roads RAG Assessment 2026	

Transport and Roads Guideline Comments 2026	
Transport and Roads RAG Assessment 2025	Amber
Transport and Roads Guideline Comments 2025	A Transport Assessment and a Travel Plan will be required. The development would need to provide mitigation to reduce the vehicle impact and encourage active travel and public transport use.
Transport and Roads RAG Assessment 2023	
Transport and Roads Guideline Comments 2023	
Transport and Roads RAG Assessment 2021	
Transport and Roads Guideline Comments 2021	
Noise, Vibration, Odour and Light Pollution RAG Assessment 2026	
Noise, Vibration, Odour and Light Pollution Guideline Comments 2026	
Noise, Vibration, Odour and Light Pollution RAG Assessment 2025	Green
Noise, Vibration, Odour and Light Pollution Guideline Comments 2025	Having regard to the nature, size, scale, location and character of the area, considered a negligible / low adverse noise constraint impact / effect risk on proposed residential occupiers having regard to existing noise sources - no objection. Demolition and construction impacts and potential operational noise for example Air Source Heat Pump/s (ASHP/s) etc. a constraint but manageable via conditions.
Noise, Vibration, Odour and Light Pollution RAG Assessment 2023	
Noise, Vibration, Odour and Light Pollution Guideline Comments 2023	
Noise, Vibration, Odour and Light Pollution RAG Assessment 2021	
Noise, Vibration, Odour and Light Pollution Guideline Comments 2021	
AQMA RAG Assessment 2026	
Air Quality Officer Comment 2026	
AQMA RAG Assessment 2025	Amber

Air Quality Officer Comment 2025	The site has been scored as Amber. The site falls outside the Air Quality Management Area (AQMA). However, due to the scale of the site, the number of units proposed and the location, air quality mitigation measures and conditions may be necessary to offset impacts on designated AQMAs.
AQMA RAG Assessment 2023	
Air Quality Officer Comment 2023	
AQMA RAG Assessment 2021	
Air Quality Officer Comment 2021	
Contaminated Land RAG Assessment 2026	
Contaminated Land Officer Comments 2026	
Contaminated Land RAG Assessment 2025	Green
Contaminated Land Officer Comments 2025	Brownfield site but only ever used for residential, very low risk of contamination
Contaminated Land RAG Assessment 2023	
Contaminated Land Officer Comments 2023	
Contaminated Land RAG Assessment 2021	
Contaminated Land Officer Comments 2021	
Overall Suitability Score	Amber
Further constraints	-
Agricultural Land Classification Grade 1 (% overlap)	0
Agricultural Land Classification Grade 2 (% overlap)	0
Agricultural Land Classification Grade 3 (% overlap)	0
Agricultural Land Classification Grade 4 (% overlap)	0
Agricultural Land Classification Non Agricultural (% overlap)	0
Agricultural Land Classification Urban (% overlap)	100.00
Source Protection Zone (% overlap)	0

Highways England Zones	Cambridge
Available	-
Is the site controlled by a developer or landowner who has expressed an intention to develop?	The site was submitted by the landowner and/or site promoter who has confirmed that the site is available for development in the timescales indicated.
Are there known legal or ownership impediments to development?	No
Is there planning permission to develop the site?	No relevant recent planning history
When will the site be available for development?	0 to 5 years
Available RAG	Amber
Achievable	-
Is there a reasonable prospect that the site will be developed?	The land has been promoted by the landowner and or developer and is known to be available for development. The site has a low existing use value and development is likely to be economically viable
Achievable RAG	Green
Capacity	-
Prevailing Density (weighted) (dwellings per ha)	50
Residential capacity at prevailing density	54
Estimated employment space (m2)	0
Estimated start date	0-5 Years
Estimated annual build-out rate (pa)	40-75
Development completion timescales (years)	0-5 Years

Cambridge Junction and Cambridge Leisure, Hills Road



A map of Cambridge Junction and Cambridge Leisure, Hills Road

Site information	-
Site ID	116271
HELAA Site ID	OS271
Suitable Site Area (ha)	3.39
Ward/Parish	Coleridge
Greenfield or Previously Developed?	Previously Developed Land
Category of site	Densification of existing urban areas
Category of settlement	Cambridge City
Current use(s)	
Proposed development	Mixed Use
Proposed employment floorspace (m ²)	0
Proposed residential capacity	100
Suitability	-
Adopted Development Plan Policies RAG 2026	Green

Adopted Development Plan Policies Comment 2026	Development of the site is compatible and consistent with Development Plan policies and allocations.
Flood Risk RAG Assessment 2026	Amber
Flood Risk Officer Comment 2026	<p>Flood Zones: Site is wholly within Flood Zone 1.</p> <p>Climate Change: Site is not within a climate-change-adjusted flood zone.</p> <p>Surface Water: 20% lies in a 1-in-1,000-year event. 4% lies in a 1-in-100-year event. 5% lies in a 1-in-30-year event.</p>
Flood Risk RAG Assessment 2025	Amber
Flood Risk Officer Comment 2025	<p>Flood Zones: Site is wholly within Flood Zone One.</p> <p>Surface water flooding: 20% of the site in a 1 in 1000 year event. 4% of the site in a 1 in 100 year event. 5% of the site in a 1 in 30 year event.</p>
Flood Risk RAG Assessment 2023	
Flood Risk Officer Comment 2023	
Flood Risk RAG Assessment 2021	
Flood Risk Officer Comment 2021	
Landscape RAG Assessment 2026	
Landscape Comment 2026	
Landscape RAG Assessment 2025	Green
Landscape Comment 2025	<p>The area is defined as pre-1900 Residential Terraces and Large Terraces in the Cambridge Landscape Character Assessment (2003). The buildings do not represent a defining characteristic of this character type.</p> <p>The potential landscape impacts of developing the site are low. Buffering or integration with the existing residential development surrounding the site will be critical to the success of the site. Areas of Open Space for users of the site will also be important for their recreation and amenity needs.</p>
Landscape RAG Assessment 2023	
Landscape Comment 2023	
Landscape RAG Assessment 2021	
Landscape Comment 2021	
Biodiversity and Geodiversity RAG Assessment 2026	
Biodiversity and Geodiversity Officer Comments 2026	

Biodiversity and Geodiversity Guideline Comments 2026	
Biodiversity and Geodiversity RAG Assessment 2025	Amber
Biodiversity and Geodiversity Officer Comments 2025	All residential developments will require an assessment of recreational impact on nearby SSSIs. Otherwise, development of the site is unlikely to impact on designated sites. Boundary trees, hedgerows and open mosaic habitat (if present e.g. in railway sidings) may qualify as Habitats of Principal Importance/be of high ecological value and support protected or notable species. Site likely to be of low ecological value, although buildings may support roosting bats or nesting birds if suitable. Opportunities to enhance ecological networks and deliver biodiversity net gain.
Biodiversity and Geodiversity Guideline Comments 2025	Development of the site may have a detrimental impact on a designated site, or those with a regional or local protection, but the impact could be reasonably mitigated or compensated.
Biodiversity and Geodiversity RAG Assessment 2023	
Biodiversity and Geodiversity Officer Comments 2023	
Biodiversity and Geodiversity Guideline Comments 2023	
Biodiversity and Geodiversity RAG Assessment 2021	
Biodiversity and Geodiversity Officer Comments 2021	
Biodiversity and Geodiversity Guideline Comments 2021	
Policy RAG Rating 2026	Amber
Policy Officer Comment 2026	The site contains protected open space. However, given the size of the site and the scale of development, detrimental impacts could be reasonably mitigated, or the loss of the open space could be fully compensated locally as part of the site's development.
Policy RAG Rating 2025	Amber
Policy Officer Comment 2025	Within or Partially within Protected Open Space. Development of the site may have a detrimental impact on the open space designation, but the impact could be reasonably mitigated or compensated.
Policy RAG Rating 2023	
Policy Officer Comment 2023	
Policy RAG Rating 2021	

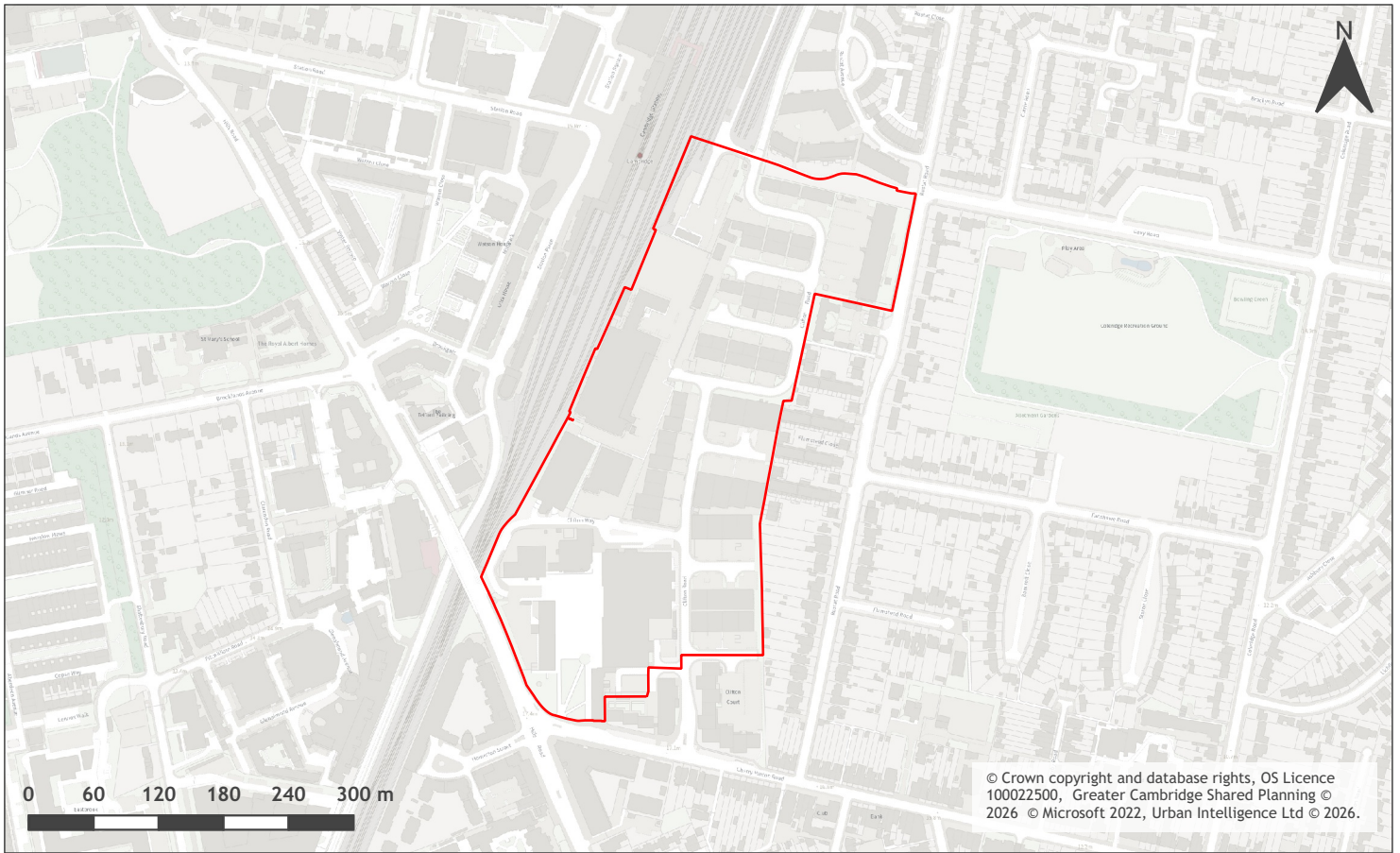
Policy Officer Comments 2021	
Historic Environment RAG Assessment 2026	
Historic Environment Comments 2026	
Historic Environment RAG Assessment 2025	Amber
Historic Environment Comments 2025	Within 100m of the New Town and Glisson Road Conservation Area, and within the setting of the Grade II listed station. Development of the site could have a detrimental impact on a designated or non-designated heritage asset or the setting of a designated or non-designated heritage asset, but the impact could be reasonably mitigated with careful design, form, massing and layout.
Historic Environment RAG Assessment 2023	
Historic Environment Comments 2023	
Historic Environment RAG Assessment 2021	
Historic Environment Comments 2021	
Archaeology RAG Assessment 2026	
Archaeology Officer Comment 2026	
Archaeology RAG Assessment 2025	Amber
Archaeology Officer Comment 2025	Potential for archaeology of Roman and 19th century date in the area.
Archaeology RAG Assessment 2023	
Archaeology Officer Comment 2023	
Archaeology RAG Assessment 2021	
Archaeology Officer Comment 2021	
Accessibility RAG Assessment	Green
Accessibility Comment	Good accessibility to key local services, transport, and employment opportunities.
Site Access RAG Assessment 2026	
Site Access Officer Comment 2026	
Site Access RAG Assessment 2025	Amber
Site Access Officer Comment 2025	The proposed site is acceptable in principle subject to detailed design. There are potential access constraints, but these could be overcome through development.

Site Access RAG Assessment 2023	
Site Access Officer Comment 2023	
Site Access RAG Assessment 2021	
Site Access Officer Comment 2021	
Transport and Roads RAG Assessment 2026	
Transport and Roads Guideline Comments 2026	
Transport and Roads RAG Assessment 2025	Amber
Transport and Roads Guideline Comments 2025	Development of the site would need to provide walking and cycling links to the Railway Station/Busway and the CB1 area. Vehicle trips would need to be minimised and development should seek to contribute to GCP Schemes in the area. Any potential impact on the functioning of trunk roads and/or local roads could be reasonably mitigated.
Transport and Roads RAG Assessment 2023	
Transport and Roads Guideline Comments 2023	
Transport and Roads RAG Assessment 2021	
Transport and Roads Guideline Comments 2021	
Noise, Vibration, Odour and Light Pollution RAG Assessment 2026	
Noise, Vibration, Odour and Light Pollution Guideline Comments 2026	
Noise, Vibration, Odour and Light Pollution RAG Assessment 2025	Amber
Noise, Vibration, Odour and Light Pollution Guideline Comments 2025	The site will be affected by industrial to rear, rail noise and traffic noise but is acceptable in principle subject to detailed design considerations and mitigation.
Noise, Vibration, Odour and Light Pollution RAG Assessment 2023	
Noise, Vibration, Odour and Light Pollution Guideline Comments 2023	
Noise, Vibration, Odour and Light Pollution RAG Assessment 2021	

Noise, Vibration, Odour and Light Pollution Guideline Comments 2021	
AQMA RAG Assessment 2026	
Air Quality Officer Comment 2026	
AQMA RAG Assessment 2025	Amber
Air Quality Officer Comment 2025	Site lies within an Air Quality Management Area (AQMA). Development of the site will require air quality mitigation to be integrated as part of the design.
AQMA RAG Assessment 2023	
Air Quality Officer Comment 2023	
AQMA RAG Assessment 2021	
Air Quality Officer Comment 2021	
Contaminated Land RAG Assessment 2026	
Contaminated Land Officer Comments 2026	
Contaminated Land RAG Assessment 2025	Amber
Contaminated Land Officer Comments 2025	The site is a brownfield site, contamination expected.
Contaminated Land RAG Assessment 2023	
Contaminated Land Officer Comments 2023	
Contaminated Land RAG Assessment 2021	
Contaminated Land Officer Comments 2021	
Overall Suitability Score	Amber
Further constraints	-
Agricultural Land Classification Grade 1 (% overlap)	0
Agricultural Land Classification Grade 2 (% overlap)	0
Agricultural Land Classification Grade 3 (% overlap)	0
Agricultural Land Classification Grade 4 (% overlap)	0

Agricultural Land Classification Non Agricultural (% overlap)	0
Agricultural Land Classification Urban (% overlap)	100.00
Source Protection Zone (% overlap)	0
Highways England Zones	Cambridge
Available	-
Is the site controlled by a developer or landowner who has expressed an intention to develop?	The site was submitted by the landowner and/or site promoter who has confirmed that the site is available for development in the timescales indicated.
Are there known legal or ownership impediments to development?	No
Is there planning permission to develop the site?	No relevant recent planning history
When will the site be available for development?	0-5 Years
Available RAG	Green
Achievable	-
Is there a reasonable prospect that the site will be developed?	The land has been promoted by the landowner and or developer and is known to be available for development. The site has a low existing use value and development is likely to be economically viable.
Achievable RAG	Green
Capacity	-
Prevailing Density (weighted) (dwellings per ha)	117
Residential capacity at prevailing density	318
Estimated employment space (m2)	0
Estimated start date	0-5 Years
Estimated annual build-out rate (pa)	40-75
Development completion timescales (years)	0-5 Years

Land at Clifton Road (including Cambridge Junction and Cambridge Leisure)



A map of Land at Clifton Road (including Cambridge Junction and Cambridge Leisure)

Site information	-
Site ID	116385
HELAA Site ID	OS400
Suitable Site Area (ha)	10.65
Ward/Parish	Coleridge
Greenfield or Previously Developed?	Previously Developed Land
Category of site	Densification of existing urban areas
Category of settlement	Cambridge City
Current use(s)	Commercial, Infrastructure, Community
Proposed development	Mixed use
Proposed employment floorspace (m ²)	10000
Proposed residential capacity	300
Suitability	-
Adopted Development Plan Policies RAG 2026	Green

Adopted Development Plan Policies Comment 2026	Development of the site is compatible and consistent with Development Plan policies and allocations.
Flood Risk RAG Assessment 2026	Amber
Flood Risk Officer Comment 2026	<p>Flood Zones: Site is wholly within Flood Zone 1.</p> <p>Climate Change: Site is not within a climate-change-adjusted flood zone.</p> <p>Surface Water: 17% lies in a 1-in-1,000-year event. 9% lies in a 1-in-100-year event. 4% lies in a 1-in-30-year event.</p>
Flood Risk RAG Assessment 2025	
Flood Risk Officer Comment 2025	
Flood Risk RAG Assessment 2023	
Flood Risk Officer Comment 2023	
Flood Risk RAG Assessment 2021	
Flood Risk Officer Comment 2021	
Landscape RAG Assessment 2026	Amber
Landscape Comment 2026	The site is a large industrial estate on the south side of the railway line opposite the Cambridge Station (Central). The area more broadly is defined by pre-1900 Residential Terraces and Large Terraces in the Cambridge Landscape Character Assessment (2003). Landscape impacts are low. Buffering or integration with the existing residential development surrounding the site will be critical to the success of the site. Areas of Open Space for residents will also be important in shaping the character of the area.
Landscape RAG Assessment 2025	
Landscape Comment 2025	
Landscape RAG Assessment 2023	
Landscape Comment 2023	
Landscape RAG Assessment 2021	
Landscape Comment 2021	
Biodiversity and Geodiversity RAG Assessment 2026	Amber

Biodiversity and Geodiversity Officer Comments 2026	All residential developments will require an assessment of recreational impact on nearby SSSIs. Otherwise unlikely to impact on designated sites. Boundary trees, hedgerows and Open Mosaic Habitat (if present e.g. in railway sidings) may qualify as Habitats of Principal Importance/be of high ecological value and support protected or notable species. Site likely to be of low ecological value, although buildings may support roosting bats or nesting birds if suitable. Opportunities to enhance ecological networks and deliver biodiversity net gain.
Biodiversity and Geodiversity Guideline Comments 2026	Development of the site may have a detrimental impact on a designated site, or those with a regional or local protection but the impact could be reasonably mitigated or compensated.
Biodiversity and Geodiversity RAG Assessment 2025	
Biodiversity and Geodiversity Officer Comments 2025	
Biodiversity and Geodiversity Guideline Comments 2025	
Biodiversity and Geodiversity RAG Assessment 2023	
Biodiversity and Geodiversity Officer Comments 2023	
Biodiversity and Geodiversity Guideline Comments 2023	
Biodiversity and Geodiversity RAG Assessment 2021	
Biodiversity and Geodiversity Officer Comments 2021	
Biodiversity and Geodiversity Guideline Comments 2021	
Policy RAG Rating 2026	Amber
Policy Officer Comment 2026	The site contains protected open space. However, given the size of the site and the scale of development, detrimental impacts could be reasonably mitigated, or the loss of the open space could be fully compensated locally as part of the site's development. Development of a large portion of the site is already permissible in line with Policy 27 (M2 - Clifton Road Area Maximum) of the Cambridge Local Plan 2018.
Policy RAG Rating 2025	
Policy Officer Comment 2025	
Policy RAG Rating 2023	
Policy Officer Comment 2023	
Policy RAG Rating 2021	

Policy Officer Comments 2021	
Historic Environment RAG Assessment 2026	Amber
Historic Environment Comments 2026	Within 100m of the New Town and Glisson Road Conservation Area, and within the setting of the Grade II listed station. Development of the site could have a detrimental impact on a designated or non-designated heritage asset or the setting of a designated or non-designated heritage asset, but the impact could be reasonably mitigated with careful design, form, massing and layout.
Historic Environment RAG Assessment 2025	
Historic Environment Comments 2025	
Historic Environment RAG Assessment 2023	
Historic Environment Comments 2023	
Historic Environment RAG Assessment 2021	
Historic Environment Comments 2021	
Archaeology RAG Assessment 2026	Amber
Archaeology Officer Comment 2026	Potential for archaeology of Roman and 19th century date in the area.
Archaeology RAG Assessment 2025	
Archaeology Officer Comment 2025	
Archaeology RAG Assessment 2023	
Archaeology Officer Comment 2023	
Archaeology RAG Assessment 2021	
Archaeology Officer Comment 2021	
Accessibility RAG Assessment	Green
Accessibility Comment	Good accessibility to key local services, transport, and employment opportunities.
Site Access RAG Assessment 2026	Amber
Site Access Officer Comment 2026	The proposed site is acceptable in principle subject to detailed design. There are potential access constraints, but these could be overcome through development.
Site Access RAG Assessment 2025	
Site Access Officer Comment 2025	

Site Access RAG Assessment 2023	
Site Access Officer Comment 2023	
Site Access RAG Assessment 2021	
Site Access Officer Comment 2021	
Transport and Roads RAG Assessment 2026	Amber
Transport and Roads Guideline Comments 2026	Development of the site would need to provide walking and cycling links to the Railway Station/Busway and the CB1 area. Vehicle trips would need to be minimised and development should seek to contribute to GCP proposals in the area. Any potential impact on the functioning of trunk roads and/or local roads could be reasonably mitigated.
Transport and Roads RAG Assessment 2025	
Transport and Roads Guideline Comments 2025	
Transport and Roads RAG Assessment 2023	
Transport and Roads Guideline Comments 2023	
Transport and Roads RAG Assessment 2021	
Transport and Roads Guideline Comments 2021	
Noise, Vibration, Odour and Light Pollution RAG Assessment 2026	Amber
Noise, Vibration, Odour and Light Pollution Guideline Comments 2026	The site will be affected by industrial to rear and traffic noise but is acceptable in principle subject to detailed design considerations and mitigation.
Noise, Vibration, Odour and Light Pollution RAG Assessment 2025	
Noise, Vibration, Odour and Light Pollution Guideline Comments 2025	
Noise, Vibration, Odour and Light Pollution RAG Assessment 2023	
Noise, Vibration, Odour and Light Pollution Guideline Comments 2023	
Noise, Vibration, Odour and Light Pollution RAG Assessment 2021	
Noise, Vibration, Odour and Light Pollution Guideline Comments 2021	

AQMA RAG Assessment 2026	Amber
Air Quality Officer Comment 2026	Site lies within an Air Quality Management Area (AQMA). Development of the site will require air quality mitigation to be integrated as part of the design.
AQMA RAG Assessment 2025	
Air Quality Officer Comment 2025	
AQMA RAG Assessment 2023	
Air Quality Officer Comment 2023	
AQMA RAG Assessment 2021	
Air Quality Officer Comment 2021	
Contaminated Land RAG Assessment 2026	Amber
Contaminated Land Officer Comments 2026	Brownfield site, contamination expected, conditions required.
Contaminated Land RAG Assessment 2025	
Contaminated Land Officer Comments 2025	
Contaminated Land RAG Assessment 2023	
Contaminated Land Officer Comments 2023	
Contaminated Land RAG Assessment 2021	
Contaminated Land Officer Comments 2021	
Overall Suitability Score	Amber
Further constraints	-
Agricultural Land Classification Grade 1 (% overlap)	0
Agricultural Land Classification Grade 2 (% overlap)	0
Agricultural Land Classification Grade 3 (% overlap)	0
Agricultural Land Classification Grade 4 (% overlap)	0
Agricultural Land Classification Non Agricultural (% overlap)	0

Agricultural Land Classification Urban (% overlap)	100.00
Source Protection Zone (% overlap)	0
Highways England Zones	Cambridge
Available	-
Is the site controlled by a developer or landowner who has expressed an intention to develop?	The sites have been submitted by the landowners and/or site promoters who has confirmed that the sites are available for development in the timescales indicated.
Are there known legal or ownership impediments to development?	Existing tenants on site
Is there planning permission to develop the site?	No relevant recent planning history
When will the site be available for development?	6-10 Years
Available RAG	Amber
Achievable	-
Is there a reasonable prospect that the site will be developed?	The land has been promoted by the landowners and or developers and is known to be available for development. The site has a low existing use value and development is likely to be economically viable.
Achievable RAG	Green
Capacity	-
Prevailing Density (weighted) (dwellings per ha)	115
Residential capacity at prevailing density	611
Estimated employment space (m2)	10000
Estimated start date	6-10 Years
Estimated annual build-out rate (pa)	50
Development completion timescales (years)	6-10 Years