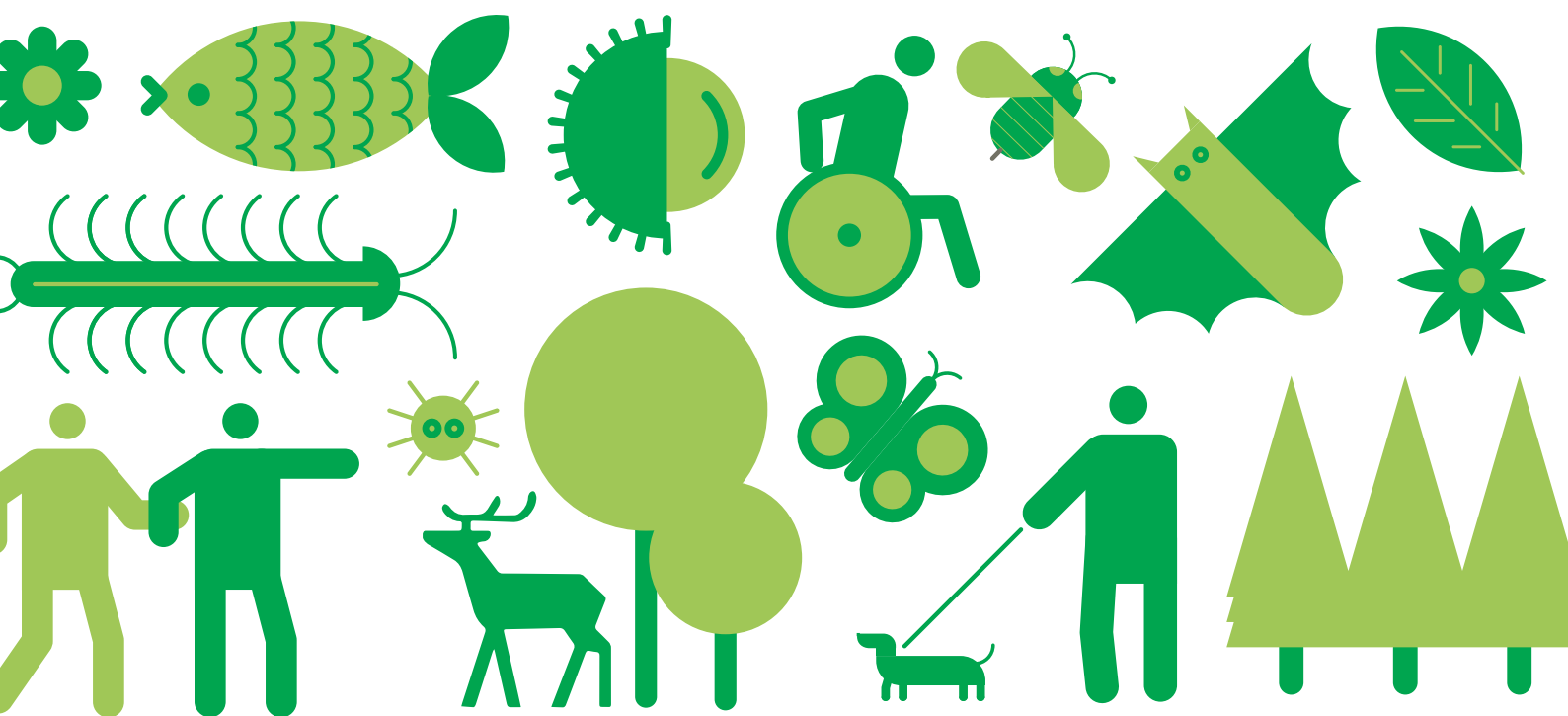


Biodiversity and Green Spaces

Topic Paper

Appendix 1: Review of
Greater Cambridge Local
Plan and draft local Nature
Recovery Strategy



Greater Cambridge Local Plan

Topic Paper published as part of the Proposed Submission
Local Plan - Regulation 19 consultation (August 2026 -
September 2026)



GREATER CAMBRIDGE
SHARED PLANNING

Appendix 1: Review of Greater Cambridge Local Plan and draft Local Nature Recovery Strategy

How the Draft Greater Cambridge Local Plan has regard to the Cambridge and Peterborough Local Nature Recovery Strategy – explanatory note

Updated (June 2026) for Proposed Submission Greater Cambridge Local Plan (Regulation 19)

1. Summary

- 1.1 This explanatory note illustrates where the Cambridgeshire and Peterborough LNRS affects the proposed submission Greater Cambridge Local Plan (GCLP) and demonstrates how the plan has regard to the LNRS: how the GCLP evidence, strategy and policies are aligned with the LNRS and support delivery of Biodiversity Net Gain.
- 1.2 A previous note was produced by GCSP as part of the draft plan Biodiversity and Green Spaces topic paper which recognised that the draft LNRS was confirmed relatively late in the process of producing the draft Local Plan. As such it formed a cross-check of the two documents and supporting evidence. Since the draft plan consultation [the final LNRS](#) has been published (December 2025).
- 1.3 Following confirmation of the finalised LNRS, and ahead of the Proposed Submission stage, the Councils have explored further opportunities to integrate LNRS priorities within the Local Plan. Minor updates have been made to this note to reflect edits to the plan.
- 1.4 As identified at the draft plan stage, and enhanced by amendments made to the Local Plan subsequent to the draft plan stage, this explanatory note reconfirms that the Local Plan has regard to the LNRS in the following ways:

- **The LNRS and the local plan evidence base for Biodiversity and GI are broadly aligned:** At the First Proposals stage the Councils identified 14 area specific strategic initiatives to enhance the green infrastructure, drawing on extensive evidence and engagement with local partners. The identified Strategic Initiatives drew on and are aligned with the Cambridge Nature Network, and more widely Natural Cambridgeshire's other landscape-scale priority areas within Greater Cambridge. The Local Nature Recovery Strategy was developed since the identification of the Strategic Initiatives, and its nature focused opportunities are mapped at a more granular level. However, similar to the Strategic Initiatives, the LNRS has drawn on the Cambridge Nature Network, and Natural Cambridgeshire's other landscape-scale priority areas, such that the Councils' GI initiatives match well with the LNRS, albeit they have a broader focus.
- **The local plan spatial strategy and sites are aligned with the LNRS:** The foundations of the GCLP GI opportunities strategies are based on existing and potential future biodiversity opportunities for nature and people, this approach is broadly in alignment with the LNRS. All site allocations within the GCLP that are close to or overlapping with areas that could become of particular importance for biodiversity (ACB) include policy requirements for specific biodiversity enhancements where the ACB action is relevant to the development. Many of these site-specific requirements connect strongly with LNRS priority actions.
- **The local plan policies support delivery of the LNRS and Biodiversity Net Gain:** Policy requirements in the draft local plan align with the LNRS, for example Policy BG/BG in relation to BNG by informing the delivery of biodiversity offsetting (which can contribute to LNRS outcomes).

1.5 The councils will continue to work in partnership (including within their roles as supporting authorities) with Cambridgeshire and Peterborough Combined Authority, Cambridgeshire County Council and other stakeholders involved in the preparation (and now subsequent post publication work) on the LNRS to ensure that the Councils take a proactive approach to the protection, enhancement and management of biodiversity identified in the Cambridgeshire and Peterborough Local Nature Recovery Strategy (LNRS).

2. The duty to "have regard" to relevant Local Nature Recovery Strategies (LNRS) and the Cambridgeshire and Peterborough LNRS

The duty to have regard to the relevant LNRS

- 2.1 Section 40 of the Natural Environment and Rural Communities Act (as amended by the Environment Act 2021) contains a specific duty on all public authorities to "have regard" to relevant Local Nature Recovery Strategies (LNRS). The LNRS regulations create a "supporting authority" role for local authorities (see Appendix 1b: Legal and Policy Integration), it is under this role that Cambridge City Council and South Cambridgeshire District Council (the Councils) engaged with other stakeholders and fed into the process for the [LNRS for Cambridge and Peterborough](#).
- 2.2 National policy and Guidance sets out how local authorities should 'have regard' to the LNRS in plan making:
- where land has been identified as having particular potential for habitat creation or nature recovery within Local Nature Recovery Strategies, proposals should contribute towards these outcomes (NPPF paragraph 159)
 - plans should identify, map and safeguard areas identified by national and local partnerships for habitat management, enhancement, restoration or creation (NPPF paragraph 192(a))
 - consider the priorities set out in the relevant local nature recovery strategy when determining how their local plan should contribute to and enhance the local and natural environment, and should be aware of those areas mapped and identified in the relevant Local Nature Recovery Strategy and the measures proposed in them and consider how these should be reflected in their local plan. In doing so, they should consider what safeguarding would be appropriate to enable the proposed actions to be delivered, noting the potential to target stronger safeguarding in areas the local planning authority considers to be of greater importance. ([PPG-Natural Environment Paragraph 046](#))
- 2.3 Drawing on above, the note considers how the councils have had regard to the duty, how the LNRS has informed the plan making process and how the content for the GCLP relates to it, under the following headings:
- Strengthens the Evidence Base for Biodiversity and Green Infrastructure
 - Informs the Spatial Strategy
 - Influences Local Plan Policies

- Supports Delivery of Biodiversity Net Gain

The Cambridgeshire and Peterborough LNRS

2.4 The Cambridgeshire and Peterborough Combined Authority (CPCA) is the Responsible Authority (RA) for the county. CPCA contracted the responsibility to develop the LNRS to [Cambridgeshire County Council](#) in collaboration with Natural Cambridgeshire (Local Nature Partnership) as a key partner. South Cambridgeshire District Council and Cambridge City Council are both supporting authorities for the LNRS. The draft LNRS public consultation period ran between 18 July-11 September 2025 and the LNRS was published in December 2025.

2.5 Local planning authorities should also consider the priorities set out in the relevant LNRS when determining how their local plan should contribute to and enhance the local and natural environment (this is set out in National Planning Guidance-see 2.2). The Statement of Biodiversity Priorities for the Cambridgeshire and Peterborough Local Nature Recovery Strategy (LNRS) is entitled '[Part two priorities and Actions](#)'. The LNRS priorities are:

- **Priority Natural landscapes:** The LNRS nature network map combines the six [Natural Cambridgeshire priority landscapes](#) with the district priority natural landscapes '[to support nature recovery at scale](#)' (pg.13). These are areas where habitat creation, restoration or enhancement are most beneficial for nature recovery and wider environmental outcomes and which can play a key role in supporting the delivery of offsite gains to maximise biodiversity benefits within Greater Cambridge.
- **Beyond the priority natural landscapes:** an action to support nature recovery across farmland and urban landscapes (within the cities, towns and villages in Cambridgeshire and Peterborough).
- **Local Priority Habitat and Species:** this includes habitat actions for the local habitat priorities (see figure below) to support nature recovery and also specific actions for some local priority species.

Habitats identified as local priorities

Broad habitat	Local habitat priority	
 Woodland	<ul style="list-style-type: none"> ✓ lowland mixed deciduous woodland ✓ wet woodland 	<ul style="list-style-type: none"> ✓ wood pasture and parkland ✓ traditional orchards
 Grassland	<ul style="list-style-type: none"> ✓ lowland calcareous grassland ✓ lowland meadow 	
 Wetland	<ul style="list-style-type: none"> ✓ lowland fen, floodplain wet grassland and associated habitats ✓ reedbed ✓ gravel pits, lakes and reservoirs 	
 Habitat mosaics	<ul style="list-style-type: none"> ✓ mosaic of woodland, grassland and wetland 	
 Rivers, chalk streams and drainage ditches	<ul style="list-style-type: none"> ✓ rivers ✓ chalk streams 	<ul style="list-style-type: none"> ✓ fen main river and drains ✓ fen drainage ditches
 Urban landscape	<ul style="list-style-type: none"> ✓ urban parks and natural greenspaces 	
 Farmland landscape	<ul style="list-style-type: none"> ✓ arable field margins ✓ ponds 	<ul style="list-style-type: none"> ✓ temporary pools ✓ hedgerows



3. How the Greater Cambridge Local Plan has regard to the Cambridge and Peterborough LNRS

Evidence Base for Biodiversity and Green Infrastructure

- 3.1 The proposed submission Greater Cambridge Local Plan and its evidence base has been developed working with consultants and local experts including Local Planning Authority (LPA) Ecologists.
- 3.2 The plan seeks to protect, enhance and expand existing biodiversity assets in the authority area. It identifies and protects the existing green infrastructure network, and sets out the strategic green infrastructure initiatives intended to enhance the green infrastructure network at a landscape scale. This aligns with [LNRS vision](#) to create, restore and connect a wildlife rich, resilient, productive and sustainable landscape for both people and nature across a large connected area.
- 3.3 In the process to the publication of the local plan, GCSP have:
- Completed a Green Infrastructure (GI) Opportunities Evidence Base and identification of Strategic GI initiatives
 - Considered nature assets in reviewing sites submitted to us and in the creation of the GI standards and GI strategy for the local plan
 - Considered nature/GI opportunities when looking at site allocations (including the potential for the creation of new and protection of existing natural green open space and the network of green spaces and routes, landscapes, biodiversity, water bodies and heritage)
 - Considered integrated water management (which considers water resources, quality and resilience to flooding) and,
 - Considered the conservation and restoration of chalk streams

Informs the Spatial Strategy

- 3.4 At a strategic level, the strategic priority for the Biodiversity and Green Spaces policies in the GCLP is to:
- “ increase and improve our network of habitats for wildlife, and green spaces for people, ensuring that development leaves the natural environment better than it was before”.
- 3.5 To inform the overall strategy for the plan we considered the best locations to restore our area’s habitat networks and provide more green spaces, this process identified 14 strategic green infrastructure initiatives to help achieve this (see the [GCLP Green Infrastructure Opportunity Mapping Final Report 2021](#)). These areas drew on an understanding of existing projects and

initiatives in Greater Cambridge such as the Natural Cambridgeshire Doubling Nature Vision, Cam Valley Forum restoration projects, Cambridge Chalk Stream Project, Cambridge Nature Network and Greater Cambridge Partnership Projects (for example Waterbeach Greenway).

3.6 At a site specific level, the Councils completed a 'cross check' of sites allocated within the draft GCLP (see Appendix 1d) against those specific areas identified in the draft [Cambridgeshire and Peterborough Local Nature Recovery Strategy Local Habitat Map](#) for Areas of Particular Importance for Biodiversity (APIB) and Areas that could become of particular importance for biodiversity and wider environmental benefits (ACB). The Councils consider that this 'cross check' remains a robust assessment, on the basis that the final LNRS does not materially update the opportunity mapping (the Councils are not aware of any substantive changes made between the draft and final LNRS mapping). However, since the final LNRS publication one new site has been allocated in the Proposed Submission Local Plan. Site S/C/MRG Milton Road Car Garages were included in the draft plan as part of North East Cambridge and is now included as a standalone allocation again (site included in the current Cambridge Local Plan 2018). For this reason, this site has been added to the cross check of sites (Appendix 1d).

3.7 Appendix 1d shows that:

- Site allocations in the GCLP avoid development in areas which are critical for nature recovery: no site is in an APIB. Some sites do have ancient and veteran trees within the boundary of the site (which is irreplaceable habitat) however such trees are protected by the provisions in the proposed local plan policy BG/TC.
- All sites close to or overlapping with areas that could become of particular importance for biodiversity (ACB) include policy requirements for specific biodiversity enhancements (noting as below that development management policies require biodiversity net gain and inclusion of green infrastructure enhancements), where the ACB action is relevant to the development. Many of these site specific requirements connect strongly with LNRS priority actions. In particular, strategic sites including Cambridge East, Cambridge Biomedical Campus and Cambourne North require strategic scale provision of green spaces in locations that support LNRS priorities.

3.8 In summary, site allocations in the draft GCLP avoid development in areas which are critical for nature recovery, except for in very limited instances where policy mitigations are included. Site allocation site specific biodiversity requirements connect strongly with LNRS priority actions in many instances.

4. Local Plan Development Management Policies

Biodiversity and Green Spaces Policies

Policy BG/BG: Biodiversity and Geodiversity- support for the delivery of Biodiversity Net Gain

4.1 Following confirmation of the finalised LNRS, and ahead of the Proposed Submission stage, the Councils have explored further opportunities to integrate LNRS priorities within the Local Plan. As a result of this consideration, updates have been made to Policy BG/BG. The LNRS identifies a range of priority habitats (which are crucial to nature) and the actions that can be taken in these habitats to support nature recovery, it does not assess the specific constraints/opportunities for development site allocations. However, it can support the LPA in planning positively for the delivery of potential measures within a proposed development, using the LNRS priorities and measures to inform delivery of Biodiversity Net Gain and green infrastructure networks. A new section (4) has been added to the policy to strengthen the policy approach to encouraging the delivery of BNG to align with the aims of the LNRS, this change is as follows:

“Opportunities to deliver measures which align with those identified in the Cambridgeshire and Peterborough Local Nature Recovery Strategy as part of any net gain provision should be prioritised, particularly where a proposal is within a habitat priority area identified within the LNRS.”

4.2 The policy encourages the delivery of offsite BNG within areas identified within the LNRS priority landscape areas. These priority natural landscape areas provide a focus for delivery of long-term nature recovery in Cambridgeshire (and Peterborough) and for targeting investment in the natural environment. They highlight those areas where BNG and offsetting would be best focused and can assist developers with identifying potential sites which could be used either for habitat banking or off-site BNG.

4.3 The policy controls development affecting sites and species of biodiversity and geodiversity importance, requiring applicants to provide survey information and site assessment prior to the determination of an application that is proportionate to the likely severity of impacts for proposals (where development may affect biodiversity including sites of biodiversity importance, habitats and species of principal importance or sites of geodiversity). A LNRS is not a species conservation strategy and it does not specifically target species conservation but instead aims to improve the overall environment and biodiversity by creating, enhancing and restoring habitats. The

Cambridge and Peterborough LNRS does identify 144 species as locally and nationally important, and officers have reviewed the policy and consider that in has regard to the LNRS species priorities. Additional policy requirements have been added subsequent to this review seeking to provide additional protections specifically for Barbastelle bats within the Natural England Impact Risk Zone for the Eversden and Wimpole Woods SAC. The policy has also been amended to require all development to provide integrated nest boxes and, to set out that development proposals within or near to Important Invertebrate Areas (IIA) (as mapped by Buglife England) should protect and enhance habitat features for invertebrates via site design and ongoing management. These policy controls require applicants to provide additional survey information, mitigation and enhancement measures (where required) and specifically support the Woodland and Wetland Local Priority Habitat (bats and invertebrates) and the habitat actions for Swifts within the LNRS.

Policy BG/GI: Green Infrastructure

- 4.4 In relation to the LNRS, this policy identifies the revitalisation of the chalk stream network as one of the fourteen strategic green infrastructure initiatives which are a priority for enhancing strategic green infrastructure across Greater Cambridge. This policy supports the LNRS strategic initiative which recognises the importance of the internationally rare chalk streams within Cambridgeshire and Peterborough and to collaborate with cross-boundary partners to conserve and restore them.
- 4.5 The Green Infrastructure Opportunity Mapping Recommendations Report (2021) identified the fourteen area-specific and dispersed long term priority enhancements to the GI network across Greater Cambridge – described as strategic initiatives. The area specific strategic initiatives identify more detailed priorities for enhancing strategic green infrastructure across Greater Cambridge but align with identified Nature Networks (particularly the Cambridge Nature Network) in the LNRS. Many actions of under the strategic initiatives are intended to be guided and delivered by existing projects and initiatives which have also informed the actions within the LNRS; for example, ‘1. Revitalising the chalk stream network’ aligns with ‘RD6D’ in the LNRS both building on ongoing initiatives as part of the Greater Cambridge Chalk Streams Project and through working with partner organisations (e.g. Natural England, Environment Agency, Cam Catchment Partnership).
- 4.6 The LNRS nature network maps combines the Natural Cambridgeshire six priority landscapes with the district priority natural landscapes to produce a coherent, long-term nature network map for Cambridgeshire (and Peterborough) to support nature recovery at scale.

Policy BG/TC: Improving Tree Canopy Cover and the Tree Population

- 4.7 In relation to the LNRS, the policy sets out that for all development where there are trees on, or immediately adjacent to the site, that proposals must preserve, protect and enhance existing trees and hedgerows. The policy also ensures existing and newly planted trees, hedgerows and other vegetation can mature and be maintained in the long term, that any new trees should be an appropriate species for the conditions of the site (including consideration of climate change and should support species diversity and incorporation of long lived trees). This policy supports several of the LNRS actions for woodlands; for example, action Wo7B to “improve management of all ancient and veteran trees, including urban / street trees, including planning for replacement with locally sourced ‘plant healthy’ stock that is resilient to climate change”.
- 4.8 The policy supports the delivery of the area-wide ambition of 20% tree canopy cover through a ‘no net loss’ policy approach. Increasing tree canopy cover and its distribution (by protecting the existing tree canopy and planting new trees using locally appropriate species) helps settlements adapt to climate change and sustainably enhances the urban environment for people and wildlife. These benefits are recognised in the LNRS in supporting action U1B which seeks to increase the urban tree canopy by planting native and climate resilient tree species in streets, parks, and other public spaces to provide habitat, reduce urban heat island effects, and improve air quality.
- 4.9 The LNRS recognises that public open spaces and gardens provide the basis for the “urban forest” (which is supplemented by street trees and road verges), the Greater Cambridge Green Infrastructure Opportunity Mapping Study Part 2 Recommendations Report (September 2021) identified expanding Greater Cambridge's 'urban forest' as one of 14 Strategic Initiatives for improving Greater Cambridgeshire's Green Infrastructure Network.

Policy BG/RC: River Corridors

- 4.10 In relation to the LNRS, the policy requires development along river corridors to protect and enhance the existing landscape (of river corridors), referring to both the Greater Cambridge Landscape Character Assessment and the Local Nature Recovery Strategy for guidance. This policy supports the LNRS urban landscape enhancement action U1A which seeks enhancement to the biodiversity value of parks and green spaces within our

cities, towns and villages including river corridors (as well as other green open spaces: allotments, churchyards, country parks, public parks and gardens, community gardens).

Policy BG/UGF: Urban Greening Factor

4.11 This is a new policy in the GCLP which requires major development proposals to achieve specified Urban Greening scores (0.3 for predominantly commercial development, 0.4 for predominantly residential development within Cambridge Defined Development Extent; or 0.5 for predominantly residential development outside Cambridge Defined Development Extent, except where it can be demonstrated that more than 50% of the site area equates to accessible greenspace). The policy also sets out that proposals should be informed by urban greening best practice guidance published by Natural England at the time of the application, this policy supports the LNRS strategic aim to encourage existing, new and large developments to incorporate wildlife friendly features by introducing urban greening interventions.

Other Policies in the draft Greater Cambridge Local Plan

4.12 The impacts from climate change and the principles of adaptation and mitigation are embedded throughout the emerging GCLP and the LNRS. For example, the draft GCLP includes policies which:

- take a holistic approach to water management, water supply, wastewater, flood risk and water quality in a coordinated way with the aim of ensuring the long-term sustainability of water resources and ecosystems (Policy CC/IW), this supports the LNRS strategic aim to promote integrated water management techniques considering water resources, quality, and resilience to flooding,
- Policy CC/SD: provides guidance for proposals to meet the requirements for environmental sustainability, mitigate the effects of or contribute to adaptations to climate change,
- Policy CC/CS: recognises that promotion of nature-based solutions, where natural systems are protected, restored and managed can assist with the protection of carbon sinks while at the same time providing benefits for biodiversity and health and wellbeing and,
- Policy CC/RE ensures that development which generate energy from renewable and low-carbon sources, including associated infrastructure, grid connections and storage will not cause significant, irreversible adverse impacts that cannot be mitigated, including cumulative and cross-boundary impacts on (but not limited to) biodiversity (including protected habitats and species and ecological

networks; water quality and flood risk; the best and most versatile agricultural land (Grades 1, 2 and 3a).

Wider work undertaken by GCSP

- 4.13 The GCSP Natural Environment Team recognised in 2022 the imminent need to provide reliable solutions for developers to offset environmental damage through development.
- 4.14 Guidance in the Biodiversity Supplementary Planning Document (SPD) was updated in June 2022, which included the emerging Environment Act legislation changes requiring any new developments to improve nature in the area by at least 10%.
- 4.15 In 2023/24 GCSP worked in partnership with Cambridgeshire County Council, The Wildlife Trust, Cambridge Past, Present and Future, and others to identify where habitats could be created or enhanced, enabling the creation of a network of new [Biodiversity Net Gain \(BNG\) habitat banks across the Greater Cambridge area.](#)

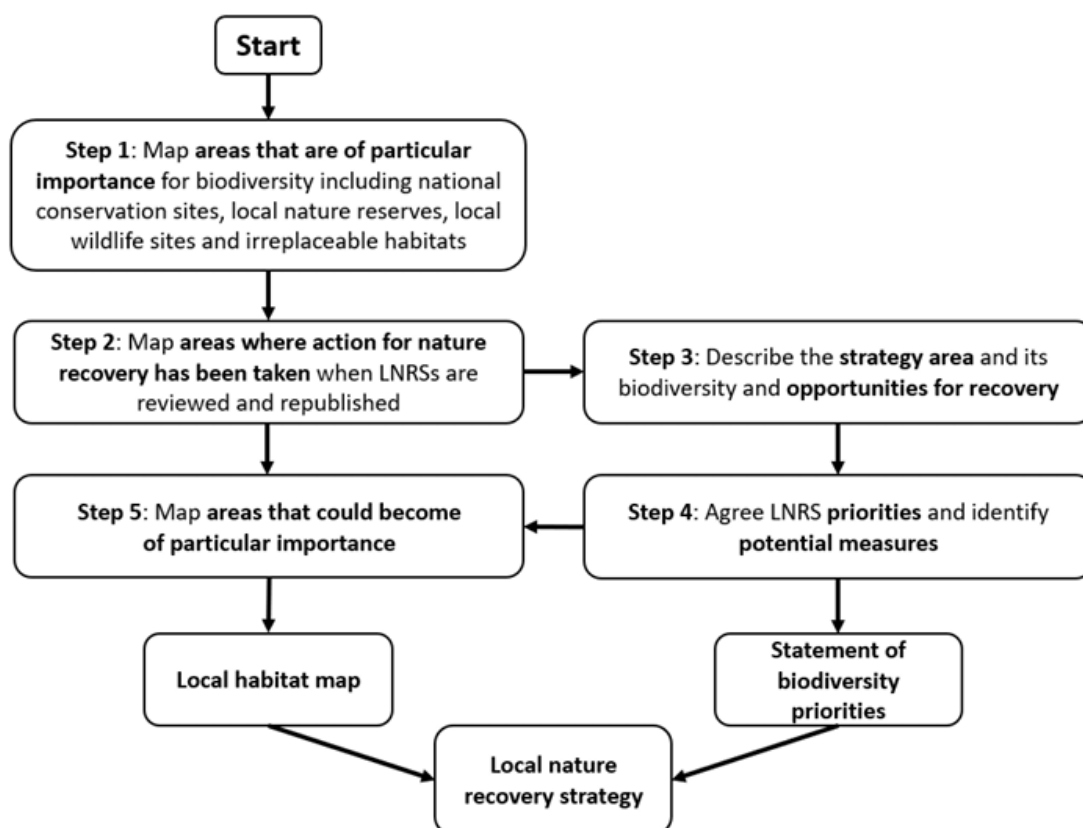
Appendix 1a: What are Local Nature Recovery Strategies (LNRS)

A key component of the Environment Act 2021 introduced a legal requirement for local areas to produce mandatory spatial strategies for nature: Local Nature Recovery Strategies (LNRS), aiming to set priorities for nature recovery across England. This established LNRS's (once created) as the first statutory spatial strategies for nature in England.

Local Nature Recovery Strategies (LNRS) are spatial strategies which plan, map and create priorities for nature recovery and enhancement in a given area. There are 48 strategy areas, each appointed to a responsible authority (RA) to lead on the preparation of the LNRS for their area.

There are two main components that make up the LNRS: a written document called the 'Statement of Biodiversity Priorities' and an online map called the 'Local Habitat Map'.

Figure 1: Order of steps to be followed in preparing contents of a LNRS



Source: [Local nature recovery guidance, DEFRA \(2023\)](#) (Pg. 8)

A LNRS identifies opportunities for nature recovery and enhancement, agrees priorities for nature recovery and, proposes actions in the locations where it would make a particular contribution to achieving those priorities. LNRS do not prohibit development or other land uses. They are an 'enabling mechanism' which set out where interventions can happen to best support nature recovery and which bring local stakeholders together through joint working towards a shared vision (the product of this engagement being the habitat map and statement of biodiversity policies as set out in the LNRS).

There are currently no specific legal duties that require LNRS to be implemented and there are no requirements that any specific proposed action must be carried out. The proposals within the LNRS are intended to guide where the public, private and voluntary sectors focus their nature recovery efforts for greater collective impact.

Appendix 1b: Legal and Policy Integration

The Biodiversity Duty

Local planning authorities have a statutory biodiversity duty under the Environment Act 2021; [Section 40 of the Natural Environment and Rural Communities Act 2006](#) places a duty on all public authorities (in England and Wales) to have regard, in the exercise of their functions, to the purpose of conserving and enhancing biodiversity.

This duty means that the councils must consider what action they can take to further the general biodiversity objective (being the conservation and enhancement of biodiversity in England through the exercise of functions in relation to England) and where they consider there is action to be taken, the authority must determine policies and objectives that it considers appropriate for taking action to further the biodiversity objective and must take such action.

In complying with this duty, the councils must:

- “have regard” to any relevant Local Nature Recovery Strategy, species recovery strategy and protected site strategy and,
- report on the performance of this duty (under section 40A)

Cambridge City Council and South Cambridgeshire District Council have both declared climate emergencies and are committed to the protection and enhancement of biodiversity. The councils will continue to work with partners to ensure a proactive approach to the protection, enhancement and management of biodiversity identified in national/local strategies and plans such as the Cambridge Nature Network, the Cambridgeshire and Peterborough Local Nature Recovery Strategy (LNRS) and the Cambridgeshire Green Infrastructure Strategy (2011).

The NPPF and Planning Policy Guidance (PPG)

NPPF

The NPPF was updated and published 12 December 2024. Section 15 of the NPPF deals specifically with ‘conserving and enhancing the natural environment’, and this update added in reference to LNRS’s in section 13 ‘protecting green belt land’, (paragraph 159): “where land has been identified as having particular potential for habitat creation or nature recovery within Local Nature Recovery Strategies, proposals should contribute towards these outcomes.

PPG (Natural Environment)

The PPG on [protecting and enhancing the Natural Environment](#) was been updated 19 February 2025. This updated includes the addition of a new section 'Local Nature Recovery Strategies' (paras 044-048), which sets out:

- A requirement for all LPAs in England to “have regard” to local nature recovery strategies (LRNSs) in both plan-making and decisions. It states that under section 40 of the Natural Environment and Rural Communities Act (as amended by the Environment Act 2021), all public authorities in England have a duty to “consider how they can conserve and enhance biodiversity”. “In complying with this duty all public authorities must “have regard” to any relevant local nature recovery strategy,” (Paragraph 044).
- How LPAs should have regard to LNRS in plan making: LRNSs “will identify and map proposed areas for habitat management, enhancement, restoration and creation for biodiversity and the wider natural environment” and LPAs “should be aware of those areas”, as well as “the measures proposed in them [LNRS] and consider how these should be reflected in their local plan”. In doing so LPAs “should consider what safeguarding would be appropriate to enable the proposed actions to be delivered, noting the potential to target stronger safeguarding in areas the local planning authority considers to be of greater importance”. Local Plans must demonstrate how they are contributing to nature recovery through their strategy, site choices, and policies. LPAs “should consider the priorities set out in the relevant local nature recovery strategy when determining how their local plan should contribute to and enhance the local and natural environment”. The paragraph refers to paragraph 192(a) of the [NPPE](#), which states that councils' local development plans should “identify, map and safeguard components of local wildlife-rich habitats and wider ecological networks”. It also says LPAs should “promote the conservation, restoration and enhancement of priority habitats, ecological networks and the protection and recovery of priority species” as well as “identify and pursue opportunities for securing measurable net gains for biodiversity” (Paragraph 046).
- How LPAs should have regard to LNRS when it comes to planning decision-making: the guidance states that “it is for the decision-maker to determine what is a relevant material consideration based on the individual circumstances of the case”. The guidance adds: “In cases where there is a draft local nature recovery strategy that has been consulted upon but not yet finalised and published, the draft strategy may contain useful evidential information that can support appropriate decision making” (Paragraph 047).

- The relationship between LNRSs and Biodiversity Net Gain: LNRS “will identify areas where habitat creation, restoration or enhancement would be most beneficial for nature recovery and wider environmental outcome” and can play a “critical role in supporting offsite gains to be delivered in a way that maximises biodiversity benefits, when these are required to achieve a development’s biodiversity gain objective. This can help to support bigger and more joined-up areas in which our wildlife can thrive.” LPA’s involvement in the preparation of LNRSs can “help identify suitable offsite biodiversity gain sites” and serve as a key information source for example ‘regarding strategic approaches to off-site biodiversity net gain delivery and connections to existing habitat, when local planning authorities are carrying out their functions in respect of Biodiversity Net Gain’.

Paragraph 010 was also updated and now recommends that LPAs and neighbourhood planning bodies “work collaboratively with the [LNRS-] responsible authority and other partners” to prepare and agree the LNRS for their area, to “help ensure alignment” between the strategy and the local plan.

Decision making

The PPG Natural Environment section on how LPAs have regard to LNRS in planning decision making has been updated to state that an LNRS serves as “an evidence base” which contains information that may be a ‘material consideration’ in the planning system ([Paragraph: 047 Reference ID: 8-047-20250219, PPG Natural Environment](#)).

The guidance still states that all planning policies and decisions need to be based on up-to-date information about the natural environment and other characteristics of the area, and so LPAs can continue to draw on “river basin management plans, national landscapes management plans, green infrastructure strategies, tree and woodland strategies, and landscape character assessments”. Also, that it is for the decision-maker to determine what is a relevant material consideration based on the individual circumstances of the case.

Appendix 1c: How does an LNRS affect a Local Plan

Strengthens the Evidence Base for Biodiversity and Green Infrastructure

LNRS's identify priority areas for habitat creation and restoration, existing high-value natural assets and opportunities for enhancing biodiversity.

Informs Local Plan Spatial Strategy and Site Selection

Local Plans must now consider:

- Avoiding development in areas critical for nature recovery
- Directing development to areas where biodiversity net gain (BNG) can align with LNRS priorities (as set out within the LNRS written statement)

LNRS local habitat maps are spatial tools, making it easier for planners to guide development while promoting ecological networks. These maps can be used to identify sites for green infrastructure corridors and biodiversity offsetting.

Influences Local Plan Policies

Local Nature Recovery Strategies will shape and strengthen environmental policies in the Local Plan. For example:

- Nature recovery corridors
- Protection and enhancement of priority habitats
- Green infrastructure networks
- Climate adaptation through ecological restoration

Supports Delivery of Biodiversity Net Gain (BNG)

The relevant primary legislation for the statutory framework for biodiversity net gain (BNG) is principally set out under Schedule 7A (Biodiversity Gain in England) of the Town and Country Planning Act 1990 ("TCPA 1990"). This legislation was inserted into the 1990 Act by Schedule 14 of the Environment Act 2021 and was amended by the Levelling Up and Regeneration Act 2023.

Under the 2021 Environment Act all planning permissions granted in England (with a few exemptions) except for small sites have to (since 12 February 2024) deliver at least 10% biodiversity net gain development (unless exempt).

LNRSs play a role in the location of off-site mandatory BNG, by determining the 'strategic significance multiplier' of the statutory biodiversity metric which must be used to comply with BNG requirements under the TCPA 1990.

LNRSs provide the framework for targeting and measuring BNG:

- LNRS priorities help identify suitable sites for on-site and off-site gains
- Development proposals that align with LNRS may be viewed more favourably by planning authorities
- Local Plans should include policies requiring BNG to contribute to LNRS outcomes.

Appendix 1d: Review of GCLP Allocated sites against LNRS areas of particular importance for biodiversity (APIB) commentary, and areas that could become of particular importance for biodiversity (ACBs)

Site: North East Cambridge (S/NEC)

Broad location: Cambridge

Use: Mixed use

Areas of particular importance for biodiversity (APIB):

- No APIB within the site
- In close proximity to Bramblefields Local Nature Reserve

Areas that could become of particular importance for biodiversity (ACB):

- Multiple ACBs within and adjacent to site boundary.
- ACB Actions within/adjacent to site:
 - Wo3B: Deliver wider environmental benefits such as improving water quality, air quality and reduce flood risk through tree and woodland creation in appropriate locations such as upper catchment locations, adjacent to rivers and close to centres of population.
 - Wo1A: Enhance the management of unmanaged woodlands with a minimum size of 1 hectare to UK Forestry Standards to achieve a varied structure and greater diversity.
 - G2C: Deliver wider environmental benefits such as runoff reduction, water quality enhancement and potential access to nature, by creating species-rich neutral grassland in appropriate locations.
 - G2A: Enhance existing species-rich neutral grassland sites to support the diversity of scarce and common species associated with this habitat.

How does the site allocation or area of Major Change specifically have regard for ACB opportunity?

NEC will deliver an exemplary green and blue infrastructure network that will enable everyone to lead healthy lifestyles, protect and enhance biodiversity, and help mitigate the impact of development on climate change. This is to be achieved through:

- The provision of an integrated network of parks, squares, play spaces and water features, that seamlessly joins with and is accessible to the strategic networks outside of the North East Cambridge Area, such as to the River Cam and Chesterton Fen.

- Embedding nature across all development typologies, including green roofs, trees, habitat corridors and urban greening.
- Meeting 20% Biodiversity Net Gain on-site and the protection/enhancement of hedgerows and water bodies, including the First Public Drain.
- The integration of Sustainable Urban Drainage Systems and flood mitigation measures as both functional and amenity features with the design of landscapes and open spaces, including the daylighting culverts where feasible.
- The provision of community food growing, informal play and health-focused green spaces within every neighbourhood.

Site: Milton Road Garages (S/C/MRG)

Broad location: Cambridge

Use:

Areas of particular importance for biodiversity (APIB):

- No APIB within the site
- In close proximity to Bramblefields Local Nature Reserve

Areas that could become of particular importance for biodiversity (ACB):

- No ACB within site area

How does the site allocation or area of Major Change specifically have regard for ACB opportunity?

- N/A

Site: 1-33 Stanton House, Christchurch Street (S/C/SH)

Broad location: Cambridge

Use: Housing

Areas of particular importance for biodiversity (APIB):

- No APIB within the site

Areas that could become of particular importance for biodiversity (ACB):

- No ACB within site area

How does the site allocation or area of Major Change specifically have regard for ACB opportunity?

- N/A

Site: 137-143 Histon Road, Cambridge (S/C/HTR)

Broad location: Cambridge

Use: Housing

Areas of particular importance for biodiversity (APIB):

- No APIB within the site

Areas that could become of particular importance for biodiversity (ACB):

- No ACB within site area
- Site is adjacent to ACB- Histon Road Recreation Ground.
- ACB Actions adjacent to site:
 - U1A: Enhance the biodiversity value of parks and green spaces within our cities, towns and villages including allotments, churchyards, country parks, public parks and gardens, community gardens and river corridors.

How does the site allocation or area of Major Change specifically have regard for ACB opportunity?

- N/A – site does not provide opportunity to enhance recreation ground.

Site: 1-78 Hanover Court, 1-49 Princess Court and Garage at Newtown Garages (S/C/HPC)

Broad location: Cambridge

Use: Housing

Areas of particular importance for biodiversity (APIB):

- No APIB within the site

Areas that could become of particular importance for biodiversity (ACB):

- No ACB within site area

How does the site allocation or area of Major Change specifically have regard for ACB opportunity?

- N/A

Site: 1-99 Ekin Road and 1-8 Ekin Walk (S/C/ER)

Broad location: Cambridge

Use: Housing

Areas of particular importance for biodiversity (APIB):

- No APIB within the site

Areas that could become of particular importance for biodiversity (ACB):

- No ACB within site area

How does the site allocation or area of Major Change specifically have regard for ACB opportunity?

- N/A

Site: 2-28 Davy Road and Garage Blocks (S/C/DR)

Broad location: Cambridge

Use: Housing

Areas of particular importance for biodiversity (APIB):

- No APIB within the site

Areas that could become of particular importance for biodiversity (ACB):

- Site is in close proximity to ACB-Coleridge Recreation Ground.
- ACB Actions:
 - U1A: Enhance the biodiversity value of parks and green spaces within our cities, towns and villages including allotments, churchyards, country parks, public parks and gardens, community gardens and river corridors.
 - U2A: Create new natural greenspaces prioritising areas at most risk of health impacts (as identified by the Environmental Justice Index).

How does the site allocation or area of Major Change specifically have regard for ACB opportunity?

- N/A - site does not provide opportunity to enhance recreation ground.

Site: 315-349 Mill Road and Brookfields, Cambridge (S/C/BFS)

Broad location: Cambridge

Use: Mixed use

Areas of particular importance for biodiversity (APIB):

- No APIB within the site

Areas that could become of particular importance for biodiversity (ACB):

- No ACB within site area.

How does the site allocation or area of Major Change specifically have regard for ACB opportunity?

- N/A

Site: Betjeman House, Cambridge(S/C/BJH)

Broad location: Cambridge

Use: Mixed use

Areas of particular importance for biodiversity (APIB):

- No APIB within the site

Areas that could become of particular importance for biodiversity (ACB):

- No ACB within site area.
- Site is adjacent to ACB-Cambridge Botanic Gardens Site. Adjacent to ACB area.
- ACB Actions /adjacent to site:
 - Wo1A-enhance the management of unmanaged woodlands with a minimum size of 1 hectare to UK Forestry Standards to achieve a varied structure and greater diversity.
 - W07A- enhance the biodiversity value of designated or other mapped parkland and wood pasture sites, ensuring protection of and continuity of veteran and ancient trees in accordance with best practice, and the provision of complementary habitats such as species-rich grasslands, ponds and wetlands.

How does the site allocation or area of Major Change specifically have regard for ACB opportunity?

- N/A

Site: Cambridge Junction and Cambridge Leisure, Hills Road (S/C/CJ)

Broad location: Cambridge

Use: Mixed use

Areas of particular importance for biodiversity (APIB):

- No APIB within the site

Areas that could become of particular importance for biodiversity (ACB):

- No ACB within site area.

How does the site allocation or area of Major Change specifically have regard for ACB opportunity?

- N/A

Site: Cambridge Professional Development Centre, Foster Road (S/C/PDC)

Broad location: Cambridge

Use: Housing

Areas of particular importance for biodiversity (APIB):

- No APIB within the site

Areas that could become of particular importance for biodiversity (ACB):

- Site is adjacent to ACB-Fawcett Primary School Playing field.
- ACB Action adjacent to site:
 - Wo3B: Deliver wider environmental benefits such as improving water quality, air quality and reduce flood risk through tree and woodland creation in appropriate locations such as upper catchment locations, adjacent to rivers and close to centres of population.

How does the site allocation or area of Major Change specifically have regard for ACB opportunity?

- The policy requires development to provide new public open space whilst ensuring the public open space (playing fields) to the east is retained.
- Development should take a landscape-led approach should be used to determine an appropriate layout.

Site: Clifton Road Area (S/C/CLT)

Broad location: Cambridge

Use: Mixed use

Areas of particular importance for biodiversity (APIB):

- No APIB within the site

Areas that could become of particular importance for biodiversity (ACB):

- Site is in close proximity to ACB-Coleridge Recreation Ground
- ACB Actions:
 - U1A: Enhance the biodiversity value of parks and green spaces within our cities, towns and villages including allotments, churchyards, country parks, public parks and gardens, community gardens and river corridors.
 - U2A: Create new natural greenspaces prioritising areas at most risk of health impacts (as identified by the Environmental Justice Index).

How does the site allocation or area of Major Change specifically have regard for ACB opportunity?

- N/A- site does not provide opportunity to enhance recreation ground.

Site: Former Garage Block, East Road (S/C/GER)

Broad location: Cambridge

Use: Housing

Areas of particular importance for biodiversity (APIB):

- No APIB within the site

Areas that could become of particular importance for biodiversity (ACB):

- No ACB within site area.

How does the site allocation or area of Major Change specifically have regard for ACB opportunity?

- N/A

Site: Garages between 20 St. Matthews Street and Blue Moon Public House, Cambridge (S/C/SMS)

Broad location: Cambridge

Use: Housing

Areas of particular importance for biodiversity (APIB):

- No APIB within the site

Areas that could become of particular importance for biodiversity (ACB):

- No ACB within site area.

How does the site allocation or area of Major Change specifically have regard for ACB opportunity?

- N/A

Site: Henry Giles House, 73-79 Chesterton Road, Cambridge (S/C/HGH)

Broad location: Cambridge

Use: Housing

Areas of particular importance for biodiversity (APIB):

- No APIB within the site

Areas that could become of particular importance for biodiversity (ACB):

- No ACB within site area.

How does the site allocation or area of Major Change specifically have regard for ACB opportunity?

- N/A

Site: Horizon Resource Centre, 285 Coldhams Lane (S/C/HRC)

Broad location: Cambridge

Use: Housing

Areas of particular importance for biodiversity (APIB):

- No APIB within the site

Areas that could become of particular importance for biodiversity (ACB):

- No ACB within site area.
- Adjacent to 1 ACB area (no specific actions associated with ACB).
- ACB Actions adjacent to site:
 - U2A: Create new natural greenspaces prioritising areas at most risk of health impacts (as identified by the Environmental Justice Index).
 - G1B: improve biodiversity by creating species-rich calcareous grassland adjoining to, and up to 500 metres from, existing designated and other chalk and limestone grasslands.
 - M1A: Where two or more mapped actions arise on the same land parcel, the preference is to create mosaics of the identified habitats, with at least one of the habitats of a sufficient quality to meet the minimum standards for that habitat.
 - U2B: Deliver nature-based solutions through tree planting and woodland creation in beneficial locations within urban areas and close to centres of population to provide benefits such as air quality improvement, urban cooling, noise pollution, climate change resilience, and health and wellbeing.
 - Wo6A: Create wet woodland within appropriate hydrological areas, consisting of native or climate change resilient (European only) species.

How does the site allocation or area of Major Change specifically have regard for ACB opportunity?

- The policy requires existing trees and hedgerows to be integrated into the development's design and layout where possible.
- Design-based mitigation must be used to limit the development's impact on the setting of designated assets and-urbanising impacts on Coldham's Common.

Site: Land at Barnwell Road and Newmarket Road (S/C/BRN)

Broad location: Cambridge

Use: Housing

Areas of particular importance for biodiversity (APIB):

- No APIB within the site

Areas that could become of particular importance for biodiversity (ACB):

- No ACB within site area.

How does the site allocation or area of Major Change specifically have regard for ACB opportunity?

- N/A

Site: Land South of Coldhams Lane, Cambridge (S/AMC/SCL)

Broad location: Cambridge

Use: Employment

Areas of particular importance for biodiversity (APIB):

- No APIB within the site

Areas that could become of particular importance for biodiversity (ACB):

- Multiple ACBs within or adjacent to the site.
- ACB Actions within/adjacent to site:
 - We5A: Enhance existing former sand and gravel pits sites through best practice management to maintain areas of open water, fringing reedbeds and other wetland habitats such as pollard willows and wet woodland for wetland birds, invertebrates and flora.
 - Wo1A: Enhance the management of unmanaged woodlands with a minimum size of 1 hectare to UK Forestry Standards to achieve a varied structure and greater diversity.
 - RD3A: Establish natural or semi-natural buffer zones 50 metres wide adjacent to all chalk rivers and their headwaters, winterbourne sections and springs to improve river water quality, and consequently their biodiversity value and ecological functionality.

How does the site allocation or area of Major Change specifically have regard for ACB opportunity?

- The policy requires new development to enable the regeneration of the South of Coldham's Lane Area, including delivery of a new publicly accessible urban country park. Schemes must protect water bodies and ecology; delivering ecological enhancements and new wildlife habitats will mean that future development contributes to increasing biodiversity in the city. Development proposals will decontaminate the site making it safe for future users.

Site: New Museums, Downing Street, Cambridge (S/C/NMD)

Broad location: Cambridge

Use: Mixed use

Areas of particular importance for biodiversity (APIB):

- No APIB within the site

Areas that could become of particular importance for biodiversity (ACB):

- No ACB within site area.

How does the site allocation or area of Major Change specifically have regard for ACB opportunity?

- N/A

Site: North Cambridge Academy, 108, Arbury Road, Cambridge, CB4 2JF (S/C/NCA)

Broad location: Cambridge

Use: Mixed use

Areas of particular importance for biodiversity (APIB):

- No APIB within the site

Areas that could become of particular importance for biodiversity (ACB):

- No ACB within site area.

How does the site allocation or area of Major Change specifically have regard for ACB opportunity?

- N/A

Site: Old Press/Mill Lane, Cambridge (S/C/OPM)

Broad location: Cambridge

Use: Mixed use

Areas of particular importance for biodiversity (APIB):

- Site includes irreplaceable habitat-Ancient and veteran trees.

Areas that could become of particular importance for biodiversity (ACB):

- No ACB within site area.

How does the site allocation or area of Major Change specifically have regard for ACB opportunity?

- N/A

Site: Parcel Com4, Orchard Park (S/C/OPK)

Broad location: Cambridge

Use: Mixed use

Areas of particular importance for biodiversity (APIB):

- No APIB within the site

Areas that could become of particular importance for biodiversity (ACB):

- No ACB within site area.

How does the site allocation or area of Major Change specifically have regard for ACB opportunity?

- N/A

Site: Police Station, Parkside (S/C/PPS)

Broad location: Cambridge

Use: Housing

Areas of particular importance for biodiversity (APIB):

- No APIB within the site

Areas that could become of particular importance for biodiversity (ACB):

- No ACB within site area.

How does the site allocation or area of Major Change specifically have regard for ACB opportunity?

- N/A

Site: Station Road West, Cambridge (S/C/SRW)

Broad location: Cambridge

Use: Mixed use

Areas of particular importance for biodiversity (APIB):

- No APIB within the site

Areas that could become of particular importance for biodiversity (ACB):

- No ACB within site area.

How does the site allocation or area of Major Change specifically have regard for ACB opportunity?

- N/A

Site: Strangeways Research Laboratory, 2 Worts' Causeway, Cambridge, CB1 8RN (S/C/SRL)

Broad location: Cambridge

Use: Housing

Areas of particular importance for biodiversity (APIB):

- No APIB within the site

Areas that could become of particular importance for biodiversity (ACB):

- No ACB within site area.

How does the site allocation or area of Major Change specifically have regard for ACB opportunity?

- N/A

Site: Travis Perkins, Devonshire Road, Cambridge (S/C/TRP)

Broad location: Cambridge

Use: Mixed use

Areas of particular importance for biodiversity (APIB):

- No APIB within the site

Areas that could become of particular importance for biodiversity (ACB):

- No ACB within site area.

How does the site allocation or area of Major Change specifically have regard for ACB opportunity?

- N/A

Site: Cambridge East (S/CE)

Broad location: Edge of Cambridge

Use: Mixed use

Areas of particular importance for biodiversity (APIB):

- No APIB within the site

Areas that could become of particular importance for biodiversity (ACB):

- ACBs within site Boundary.
- ACB Actions within site:
 - Wo1A: Enhance the management of unmanaged woodlands with a minimum size of 1 hectare to UK Forestry Standards to achieve a varied structure and greater diversity.
 - Wo3B: Deliver wider environmental benefits such as improving water quality, air quality and reduce flood risk through tree and woodland creation in appropriate locations such as upper catchment locations, adjacent to rivers and close to centres of population.

How does the site allocation or area of Major Change specifically have regard for ACB opportunity?

- Cambridge East will include a strong and varied framework of green infrastructure throughout the development that optimises biodiversity value and connects to existing habitats and green infrastructure in the surrounding area.
- New development is required to establish a framework of open spaces, green corridors and green infrastructure, enhance ecological links to existing habitats beyond the site boundary and, provide strategic scale green infrastructure beyond the site to enable connection from the City to the Wicken Fen Vision area and provide recreational facilities to relieve visitor pressure on more sensitive sites (for example Wilbraham Fen SSSI).

Site: Bell School, Babraham Road, Cambridge (S/EOC/BS)

Broad location: Edge of Cambridge

Use: Housing

Areas of particular importance for biodiversity (APIB):

- No APIB within the site

Areas that could become of particular importance for biodiversity (ACB):

- No ACB within site area.
- Adjacent to ACB- Bell school foundation site, action to:
 - U1A- enhance the biodiversity value of parks and green spaces within our cities, towns and villages including allotments, churchyards, country parks, public parks and gardens, community gardens and river corridors.

How does the site allocation or area of Major Change specifically have regard for ACB opportunity?

- N/A– site does not provide opportunity to enhance parks and green spaces. Allocation to provide 100 student rooms to meet the needs of the educational facility adjacent to the site.

Site: Cambridge Biomedical Campus (S/CBC)/(S/AMC/CBC)

Broad location: Edge of Cambridge

Use: Employment

Areas of particular importance for biodiversity (APIB):

- Nine Wells Local Nature Reserve
- The Beechwoods Local Nature Reserve
- Gog Magog Golf Course Site of Special Scientific Interest

Areas that could become of particular importance for biodiversity (ACB):

- Multiple ACBs within and adjacent to site boundary.
- ACB Actions within/adjacent to site:

- Wo6A: Create wet woodland within appropriate hydrological areas, consisting of native or climate change resilient (European only) species.
- Wo1A: Enhance the management of unmanaged woodlands with a minimum size of 1 hectare to UK Forestry Standards to achieve a varied structure and greater diversity.
- G2A: Enhance existing species-rich neutral grassland sites to support the diversity of scarce and common species associated with this habitat.
- RD1A: Establish natural or semi-natural buffer zones 50 metres wide adjacent to all rivers to improve river water quality, and consequently their biodiversity value and ecological functionality.
- Wo3A: Improve biodiversity by creating mixed deciduous woodland consisting of appropriate native or climate change tolerant (European only) species to increase resilience and diversity.
- G1B: improve biodiversity by creating species-rich calcareous grassland adjoining to, and up to 500 metres from, existing designated and other chalk and limestone grasslands.

How does the site allocation or area of Major Change specifically have regard for ACB opportunity?

- Cambridge Biomedical campus will be developed through a design-led approach that respects its setting within Cambridge's urban and rural edge; it will integrate sensitively with adjoining residential neighbourhoods, the wider Green Belt, and countryside to the south.
- New development will retain and enhance key views and landscape features (especially from Nine Wells Local Nature Reserve and wider countryside approaches) and enhance the interface between the built form and its natural context.
- The Campus will include a strong and varied framework of accessible green infrastructure throughout the site, which optimises the biodiversity value and connects the existing habitats and green infrastructure in the surrounding area by:
 - Establishing a connected framework of green infrastructure, integrating nature-rich open spaces and ecological corridors throughout the site.
 - Enhancing existing agricultural, grassland and woodland habitat, improving links with the Nine Wells LNR and Gog Magog Hills.
 - The campus will provide a well vegetated landscape buffer within the Strategic Enhancement Area (S/SEA/CBC) to the south of the campus.
 - Utilising sustainable drainage systems (SuDS) and addressing flood risk both in the site and outside the site boundary, surface water, foul drainage and sewage disposal, with proposals utilising natural systems and landscaped solutions where appropriate.
- Community gardens and food-growing spaces will be supported subject to policy requirements.

Site: Eddington (S/ED)

Broad location: Edge of Cambridge

Use: Mixed use

Areas of particular importance for biodiversity (APIB):

- Site includes irreplaceable habitat-Ancient and veteran trees.
- Site in close proximity to SSSI- Travellers Rest Pit.

Areas that could become of particular importance for biodiversity (ACB):

- Site includes and is in close proximity to multiple ACB areas
- ACB Actions within site:
 - RD1A: establish natural or semi-natural buffer zones 50m wide adjacent to all rivers to improve their biodiversity value and ecological functionality.
 - U2A: create new natural greenspaces prioritising areas at most risk of health impacts (as identified by the Environmental Justice Index). New natural greenspaces would be of a minimum 0.5 hectares in size with larger sites preferable, to contribute to natural greenspace accessibility standards.

How does the site allocation or area of Major Change specifically have regard for ACB opportunity?

- The policy requires development to preserve the setting of the Travellers Rest SSSI, the historic Ridge and Farrow field pattern, the avenue of Horse Chestnut trees, Veteran Oak in the centre of the site, mature hedgerows to field boundaries, and landscape features on the western edge.

Site: Fulbourn Road East, Cambridge (S/EOC/FRE)

Broad location: Edge of Cambridge

Use: Employment

Areas of particular importance for biodiversity (APIB):

- No APIB within the site

Areas that could become of particular importance for biodiversity (ACB):

- Multiple ACBs adjacent to the site.
- ACB Actions adjacent to site:
 - Wo3B: Deliver wider environmental benefits such as improving water quality, air quality and reduce flood risk through tree and woodland creation in appropriate locations such as upper catchment locations, adjacent to rivers and close to centres of population.
 - G1B: improve biodiversity by creating species-rich calcareous grassland adjoining to, and up to 500 metres from, existing designated and other chalk and limestone grasslands.

How does the site allocation or area of Major Change specifically have regard for ACB opportunity?

- Proposals should provide a landscape buffer on the southern and eastern edges to screen the site and mitigate the impact on the openness of the Green Belt. This ensures the site responds to its setting and addresses wider landscape impacts.

Site: Land between Huntingdon Road and Histon Road (Darwin Green 2/3), Cambridge (S/HHR)

Broad location: Edge of Cambridge

Use: Housing

Areas of particular importance for biodiversity (APIB):

- No APIB within the site

Areas that could become of particular importance for biodiversity (ACB):

- Multiple ACBs adjacent and within the site.
- ACB Actions within/adjacent to site:
 - Wo3A: Improve biodiversity by creating mixed deciduous woodland consisting of appropriate native or climate change tolerant (European only) species to increase resilience and diversity.
 - RD1A: Establish natural or semi-natural buffer zones 50 metres wide adjacent to all rivers to improve river water quality, and consequently their biodiversity value and ecological functionality.
 - Wo1A: Enhance the management of unmanaged woodlands with a minimum size of 1 hectare to UK Forestry Standards to achieve a varied structure and greater diversity

How does the site allocation or area of Major Change specifically have regard for ACB opportunity?

- Development proposals will deliver a new country park that will protect existing and provide new enhancements including hedgerow management and enhancement, and measures to protect and enhance wildlife habitats.
- Developers will be required to retain appropriate existing features of ecological interest

Site: Land north of Worts' Causeway, Cambridge (S/EOC/NWO)

Broad location: Edge of Cambridge

Use: Housing

Areas of particular importance for biodiversity (APIB):

- No APIB within the site

Areas that could become of particular importance for biodiversity (ACB):

- No ACB within site area.

How does the site allocation or area of Major Change specifically have regard for ACB opportunity?

- N/A

Site: Land south of Worts' Causeway, Cambridge (S/EOC/SWO)

Broad location: Edge of Cambridge

Use: Housing

Areas of particular importance for biodiversity (APIB):

- No APIB within the site

Areas that could become of particular importance for biodiversity (ACB):

- Multiple ACBs adjacent to the site.
- ACB Actions on adjacent sites:

- G1B: improve biodiversity by creating species-rich calcareous grassland adjoining to, and up to 500 metres from, existing designated and other chalk and limestone grasslands.
- G1C: Deliver wider environmental benefits such as runoff reduction, water quality enhancement and potential access to nature, by creating species-rich calcareous grassland in appropriate locations.

How does the site allocation or area of Major Change specifically have regard for ACB opportunity?

- The policy requires new development to take a landscape led design which delivers appropriate buffers with adjoining existing housing and the Cambridge Green Belt and retains the country lane appearance and character of Worts' Causeway, including its verges, hedgerows and bridleway and the existing permissive footpath on the western edge of the site.
- The policy requires development to take a positive approach to biodiversity, this includes the assessment of the wider site for potential to create an ecological corridor between this site and the Land North of Worts' Causeway site.

Site: West Cambridge (S/WC)

Broad location: Edge of Cambridge

Use: Mixed use

Areas of particular importance for biodiversity (APIB):

- No APIB within the site

Areas that could become of particular importance for biodiversity (ACB):

- Multiple ACBs within and adjacent to the site.
- ACB Actions within/adjacent to site:
 - Wo3B: Deliver wider environmental benefits such as improving water quality, air quality and reduce flood risk through tree and woodland creation in appropriate locations such as upper catchment locations, adjacent to rivers and close to centres of population.
 - Wo1A: Enhance the management of unmanaged woodlands with a minimum size of 1 hectare to UK Forestry Standards to achieve a varied structure and greater diversity

- G2C: Deliver wider environmental benefits such as runoff reduction, water quality enhancement and potential access to nature, by creating species-rich neutral grassland in appropriate locations.

How does the site allocation or area of Major Change specifically have regard for ACB opportunity?

- The policy requires new development will provide substantial landscape buffering in order to respect and treat with sensitivity the important adjacent Green Belt setting to the south and west of the site. Development will be carried out in accordance with the Woodland Management Plan approved under planning permission reference 16/1134/OUT.
- The open green space to the east and west of the Schlumberger Gould Research Centre will be retained.

Site: Bourn Airfield New Village (S/BA)

Broad location: New Settlement

Use: Mixed use

Areas of particular importance for biodiversity (APIB):

- No APIB within the site

Areas that could become of particular importance for biodiversity (ACB):

- Multiple ACBs within and adjacent to site boundary.
- ACB Actions within site:
 - G2B – improve biodiversity by creating species-rich neutral grassland adjoining to, and up to 500 metres from, existing designated and other neutral grassland sites.
 - G2C- deliver wider environmental benefits such as runoff reduction, water quality enhancement and potential access to nature, by creating species-rich neutral grassland in appropriate locations.

How does the site allocation or area of Major Change specifically have regard for ACB opportunity?

- The policy requires new development to incorporate trees and soft landscaping in all streets, to minimise impacts on ecological assets whilst encouraging access to existing natural environments, to protect and enhance sensitive ecological sites and, to provide orchards.

Site: Cambourne North (S/CBN)

Broad location: New Settlement

Use: Mixed use

Areas of particular importance for biodiversity (APIB):

- Ancient woodland (irreplaceable habitat)- Knapwell Wood and, Ancient woodland (irreplaceable habitat)/ Site of Special Scientific interest (SSSI)-Elsworth Wood.

Areas that could become of particular importance for biodiversity (ACB):

- Multiple ACBs within and adjacent to site boundary.
- ACB Actions within/adjacent to site:
 - Wo3A: Improve biodiversity by creating mixed deciduous woodland consisting of appropriate native or climate change tolerant (European only) species to increase resilience and diversity.
 - Wo1A: Enhance the management of unmanaged woodlands with a minimum size of 1 hectare to UK Forestry Standards to achieve a varied structure and greater diversity.
 - Wo3B: Deliver wider environmental benefits such as improving water quality, air quality and reduce flood risk through tree and woodland creation in appropriate locations such as upper catchment locations, adjacent to rivers and close to centres of population.
 - Wo1B: Enhance all woodlands of at least 1 hectare and within 200 metres of ancient woodlands by managing to UK Forestry Standards to achieve a varied structure and greater diversity and act as corridors, stepping stones or buffers.
 - G2A: Enhance existing species-rich neutral grassland sites to support the diversity of scarce and common species associated with this habitat.
 - RD1A: Establish natural or semi-natural buffer zones 50 metres wide adjacent to all rivers to improve river water quality, and consequently their biodiversity value and ecological functionality.

How does the site allocation or area of Major Change specifically have regard for ACB opportunity?

- The policy requires new development to have an ecological masterplan and associated stewardship strategy to deliver the Cambourne Forest. The policy requires the protection and enhancement of the statutory (SSSI) and non-statutory (CWS) woodland sites and other local sites designated for their value to biodiversity, with all designated woodland sites within the site to be retained, enhanced, kept free from public access and should be provided with an appropriate buffer between canopy edge and infrastructure. The policy requires the retention and to be kept dark existing bat habitats including broadleaved woodland, wet pasture and meadows, hedgerows, watercourses and waterbodies including buffers of at least 15m around existing (non-designated) woodlands and a minimum of 10m from all rivers and streams.

Site: Cambourne (S/CB)

Broad location: New Settlement

Use: Mixed use

Areas of particular importance for biodiversity (APIB):

- No APIB within the site

Areas that could become of particular importance for biodiversity (ACB):

- Multiple ACBs within and adjacent to site boundary.
- ACB Actions within site:
 - Wo8B- Create traditional orchards close to existing traditional orchards

Area identified south and southwest of allotments, Greenbank:

- We5A- Enhance existing former sand and gravel pits sites through best practice management to maintain areas of open water, fringing reedbeds and other wetland habitats such as pollard willows and wet woodland for wetland birds, invertebrates and flora. Reduce nutrient enrichment and pollution and where necessary reprofile edges to create shallow sloping margins and bare areas for natural regeneration

Lake Ewart, Redgrave Water and Whomping Willow Lake:

- U1A - enhance the biodiversity value of parks and green spaces within our cities, towns and villages including allotments, churchyards, country parks, public parks and gardens, community gardens and river corridors.

How does the site allocation or area of Major Change specifically have regard for ACB opportunity?

- The policy requires the safeguarding and where possible the enhancement of green and blue infrastructure and open spaces.
- Existing woodland belts to the north, south and west of the site will be protected and enhanced. Existing woods, hedges, unimproved grassland areas and water features will be retained which would contribute to the character and amenity of Cambourne West, managed to enhance their ecological value and linked together by areas of open space to provide a network of accessible green infrastructure both within the site and beyond.

Site: Northstowe (S/NS)

Broad location: New Settlement

Use: Mixed use

Areas of particular importance for biodiversity (APIB):

- No APIB within the site

Areas that could become of particular importance for biodiversity (ACB):

- Multiple ACBs within and adjacent to the site.
- ACB Actions within/adjacent to site:
 - Wo3B: Deliver wider environmental benefits such as improving water quality, air quality and reduce flood risk through tree and woodland creation in appropriate locations such as upper catchment locations, adjacent to rivers and close to centres of population.
 - Wo1A: Enhance the management of unmanaged woodlands with a minimum size of 1 hectare to UK Forestry Standards to achieve a varied structure and greater diversity.

- Wo6A: Create wet woodland within appropriate hydrological areas, consisting of native or climate change resilient (European only) species.
- G2A: Enhance existing species-rich neutral grassland sites to support the diversity of scarce and common species associated with this habitat.
- RD1A: Establish natural or semi-natural buffer zones 50 metres wide adjacent to all rivers to improve river water quality, and consequently their biodiversity value and ecological functionality.
- RD5B: Establish uncultivated riparian buffer zones at least 15 metres wide from the top of the bank (including the 9 metre internal drainage board bylaw maintenance corridor).

How does the site allocation or area of Major Change specifically have regard for ACB opportunity?

- The policy requires the new development to include appropriate planting and landscaping alongside all new access roads and substantial planted areas in association with balancing ponds.
- Where practical water in the form of lakes and watercourses will be a defining characteristic.
- New development will retain and enhance the tree belt along the airfield road between Longstanton and Oakington with additional planting, and retain existing tree plantations, the lake in the southern section of the airfield and the existing ponds in the golf course.
- New development must maintain and enhance the adjoining Local Nature Reserve of St Michael's Mount, Longstanton.
- Development will retain areas of countryside within the conservation area at Longstanton to form a green separation between Longstanton and Northstowe. These areas will only contain open land uses such as playing fields, allotments and cemeteries.

Site: Waterbeach New Town (S/WNT)

Broad location: New Settlement

Use: Mixed use

Areas of particular importance for biodiversity (APIB):

- No APIB within the site

Areas that could become of particular importance for biodiversity (ACB):

- Multiple ACBs within and adjacent to the site.

- **ACB Actions within/adjacent to site:**
 - **Wo1A:** Enhance the management of unmanaged woodlands with a minimum size of 1 hectare to UK Forestry Standards to achieve a varied structure and greater diversity
 - **Wo3B:** Deliver wider environmental benefits such as improving water quality, air quality and reduce flood risk through tree and woodland creation in appropriate locations such as upper catchment locations, adjacent to rivers and close to centres of population.
 - **G2C:** Deliver wider environmental benefits such as runoff reduction, water quality enhancement and potential access to nature, by creating species-rich neutral grassland in appropriate locations.
 - **RD5A:** Maximise opportunities for nature in fen drainage ditches by choosing nature-supporting and enhancing maintenance and management approaches such as enhancing in channel habitats to provide more habitat for wetland wildlife alongside managing flood risk and water levels.
 - **RD5B:** Establish uncultivated riparian buffer zones at least 15 metres wide from the top of the bank (including the 9 metre internal drainage board bylaw maintenance corridor).

How does the site allocation or area of Major Change specifically have regard for ACB opportunity?

- The policy requires the new development to retain, and where necessary, enhance existing woodland and water bodies. The new development is also required to include ecological mitigation measures and ecological corridors. A comprehensive blue network will be developed within and beyond the site.

Site: Babraham Research Campus (S/RSC/BRC)

Broad location: Rural Southern Cluster

Use: Mixed use

Areas of particular importance for biodiversity (APIB):

- No APIB within the site

Areas that could become of particular importance for biodiversity (ACB):

- Multiple ACBs within and adjacent to site boundary.
- ACB Actions within site:
 - Wo1A - enhance the management of unmanaged woodlands with a minimum size of 1 hectare to UK Forestry Standards to achieve a varied structure and greater diversity.

There are two areas where ACB action applies to the SE of site fronting onto the High Street.

- Wo3A - improve biodiversity by creating mixed deciduous woodland consisting of appropriate native or climate change tolerant (European only) species to increase resilience and diversity:

There is one area identified where Wo3A applies to Northern edge of site adjacent to New Plantation.

How does the site allocation or area of Major Change specifically have regard for ACB opportunity?

- Development proposals should maintain and enhance the wider landscape, including the corridor of the River Granta and, deliver compensatory improvements to the environmental quality and accessibility of remaining Green Belt Land (through a Green Belt enhancement strategy for the area which includes measures such as walking loops, new wetlands, restoration of ponds, and other associated green infrastructure projects. This strategy should also incorporate the enhancement of existing hedgerows and woodland that forms the boundaries of the site, particularly to the east and west).
- The policy requires the new development to retain existing trees where possible alongside new or enhanced tree belts. Landscape buffers should provide forest scale trees and under storey planting.

Site: Comfort Café, Fourwentways (S/RSC/CC)

Broad location: Rural Southern Cluster

Use: Employment

Areas of particular importance for biodiversity (APIB):

- No APIB within the site

Areas that could become of particular importance for biodiversity (ACB):

- No ACB within site area.
- Site is in close proximity to ACB with action:
 - G2A: Enhance existing species-rich neutral grassland sites to support the diversity of scarce and common species associated with this habitat.

How does the site allocation or area of Major Change specifically have regard for ACB opportunity?

- New development must enhance, repair and replant the site's landscape edges.
- Proposals should retain and enhance existing treescape on the site and incorporate protected trees located upon western boundary into its design.

Site: Former Spicers Site, Sawston Business Park, Sawston (S/RSC/FSS)

Broad location: Rural Southern Cluster

Use: Employment

Areas of particular importance for biodiversity (APIB):

- Adjacent to Dernford Fen SSSI

Areas that could become of particular importance for biodiversity (ACB):

- Multiple ACBs within and adjacent to the site.
- ACB Actions within/adjacent to site:
 - Wo1A: Enhance the management of unmanaged woodlands with a minimum size of 1 hectare to UK Forestry Standards to achieve a varied structure and greater diversity.
 - Wo3A: Improve biodiversity by creating mixed deciduous woodland consisting of appropriate native or climate change tolerant (European only) species to increase resilience and diversity.

- G1B: improve biodiversity by creating species-rich calcareous grassland adjoining to, and up to 500 metres from, existing designated and other chalk and limestone grasslands.
- Wo6A: Create wet woodland within appropriate hydrological areas, consisting of native or climate change resilient (European only) species.
- G1C: Deliver wider environmental benefits such as runoff reduction, water quality enhancement and potential access to nature, by creating species-rich calcareous grassland in appropriate locations.
- RD3A: Establish natural or semi-natural buffer zones 50 metres wide adjacent to all chalk rivers and their headwaters, winterbourne sections and springs to improve river water quality, and consequently their biodiversity value and ecological functionality.
- RD1A: Establish natural or semi-natural buffer zones 50 metres wide adjacent to all rivers to improve river water quality, and consequently their biodiversity value and ecological functionality.
- G2A: Enhance existing species-rich neutral grassland sites to support the diversity of scarce and common species associated with this habitat.

How does the site allocation or area of Major Change specifically have regard for ACB opportunity?

- The policy requires that development to ensure that there are no adverse impacts to the River Granta or Dernford Fen SSSI, either through construction or occupation phases.
- Development must address known surface water flooding risks through a comprehensive water management plan.
- TPO trees are to be retained and incorporated into the development design.

Site: Genome Campus, Hinxton (S/RSC/GC)

Broad location: Rural Southern Cluster

Use: Employment

Areas of particular importance for biodiversity (APIB):

- Ancient/Veteran trees (irreplaceable habitat) adjacent to site

Areas that could become of particular importance for biodiversity (ACB):

- Multiple ACBs within and adjacent to the site.
- ACB Actions within/adjacent to site:
 - Wo1A: Enhance the management of unmanaged woodlands with a minimum size of 1 hectare to UK Forestry Standards to achieve a varied structure and greater diversity.
 - RD3A: Establish natural or semi-natural buffer zones 50 metres wide adjacent to all chalk rivers and their headwaters, winterbourne sections and springs to improve river water quality, and consequently their biodiversity value and ecological functionality.
 - Wo6A: Create wet woodland within appropriate hydrological areas, consisting of native or climate change resilient (European only) species.
 - G2A: Enhance existing species-rich neutral grassland sites to support the diversity of scarce and common species associated with this habitat.

How does the site allocation or area of Major Change specifically have regard for ACB opportunity?

- The campus will introduce access to existing natural environments being careful to minimise recreational impacts on any ecological habitats or species. The campus will also provide strategic landscaping which forms part of a wider green and blue infrastructure network.
- Ecological assets will be protected and enhanced, in particular the Wellcome Trust Nature Reserve, River Cam and the railway cuttings.
- Development will create a woodland to the north west of the site. Agricultural fields to the north and north-west retain their use and to be improved for biodiversity where feasible.

Site: Land adjacent to A11 and A1307 at Grange Farm (S/GF)

Broad location: Rural Southern Cluster

Use: Mixed use

Areas of particular importance for biodiversity (APIB):

- Roman Road SSSI adjacent to the site

Areas that could become of particular importance for biodiversity (ACB):

- Multiple ACBs within and adjacent to the site.
- ACB Actions within/adjacent to site:
 - Wo3A: Improve biodiversity by creating mixed deciduous woodland consisting of appropriate native or climate change tolerant (European only) species to increase resilience and diversity.
 - Wo1A: Enhance the management of unmanaged woodlands with a minimum size of 1 hectare to UK Forestry Standards to achieve a varied structure and greater diversity.
 - Wo8B: Create traditional orchards close to existing traditional orchards. These should deliver enhanced biodiversity and heritage value through the planting of heritage variety fruit trees and the creation of species-rich grassland.
 - G1B: improve biodiversity by creating species-rich calcareous grassland adjoining to, and up to 500 metres from, existing designated and other chalk and limestone grasslands.

How does the site allocation or area of Major Change specifically have regard for ACB opportunity?

- The policy requires new development to be delivered through a design-led approach with placemaking and nature at the heart of development. The policy also requires development to preserve and enhance the significant ecological heritage and natural environment.
- A landscape led design will support the diverse ecological character and preserve the chalk hills and woodlands that are home to a species rich ecology. Development will preserve the existing range of watercourses and waterbodies of ecological significance and aquatic ecosystems
- Development will provide opportunities for ecological enhancement such as through restoration of degraded habitats and reinforcements of ecological habitats and networks.
- Development will respond appropriately to, and ensure that appropriate measures are implemented to minimise recreational disturbance and pressures on ecology from on, the designated Site of Special Scientific Interest (SSSI). Development will respond appropriately to remnant lowland calcareous grassland of high floristic diversity to the northern boundary of the development and non-statutory designations such as local wildlife sites within 2km distance of the development.

Site: Land at Maarnford Farm, Hunts Road, Duxford (S/RSC/MF)

Broad location: Rural Southern Cluster

Use: Housing

Areas of particular importance for biodiversity (APIB):

- No APIB within the site

Areas that could become of particular importance for biodiversity (ACB):

- No ACB within site area.

How does the site allocation or area of Major Change specifically have regard for ACB opportunity?

- N/A

Site: Land between Hinton Way and Mingle Lane, Great Shelford (S/RSC/HW)

Broad location: Rural Southern Cluster

Use: Housing

Areas of particular importance for biodiversity (APIB):

- No APIB within the site

Areas that could become of particular importance for biodiversity (ACB):

- ACB within site area. ACB action within site:
 - Wo3B: Deliver wider environmental benefits such as improving water quality, air quality and reduce flood risk through tree and woodland creation in appropriate locations such as upper catchment locations, adjacent to rivers and close to centres of population.

How does the site allocation or area of Major Change specifically have regard for ACB opportunity?

- Policy requires development to protect character trees and form an appropriate northern edge to reflect the wider landscape character. A landscape buffer will be established on the eastern part of the site.

- Open space is to be provided throughout the site but in particular to the east of any built new development to help provide compensatory improvements to the environmental quality and accessibility of adjacent Green Belt.

Site: Land south of Babraham Road, Sawston (S/RSC/SBR)

Broad location: Rural Southern Cluster

Use: Housing

Areas of particular importance for biodiversity (APIB):

- No APIB within the site

Areas that could become of particular importance for biodiversity (ACB):

- ACB within site area. ACB action within site:
 - Wo3A: Improve biodiversity by creating mixed deciduous woodland consisting of appropriate native or climate change tolerant (European only) species to increase resilience and diversity.

How does the site allocation or area of Major Change specifically have regard for ACB opportunity?

- The policy requires development to create a significant landscape buffer along the eastern and northern boundary of the site where it adjoins farmland which should incorporate the existing vegetation on the site boundary.

Site: Land at Slate Hall Farm, Bar Hill (S/RRA/SHF)

Broad location: Rest of Rural Area

Use: Employment

Areas of particular importance for biodiversity (APIB):

- No APIB within the site

Areas that could become of particular importance for biodiversity (ACB):

- Multiple ACBs within or adjacent to the site.
- ACB Actions within/adjacent to site:
 - Wo1A: Enhance the management of unmanaged woodlands with a minimum size of 1 hectare to UK Forestry Standards to achieve a varied structure and greater diversity.
 - RD1A: Establish natural or semi-natural buffer zones 50 metres wide adjacent to all rivers to improve river water quality, and consequently their biodiversity value and ecological functionality.
 - Wo6A: Create wet woodland within appropriate hydrological areas, consisting of native or climate change resilient (European only) species.

How does the site allocation or area of Major Change specifically have regard for ACB opportunity?

- Development proposals must take a landscape led masterplan approach, retaining and reinforcing the existing mature trees and tree belts whilst maximising opportunities to create new landscape areas and corridors. A significant proportion of the site is to be new parkland and amenity spaces, creating spaces for people working and visiting the site as well as dark corridors along the Oakington Brook which is an important bat corridor.
- Development will take a comprehensive approach to water management, including appropriate mitigation measures to address areas of flooding from the Oakington and Longstanton Brooks.

Site: Compass House and adjacent land, Chivers Way, Histon (S/RRA/CH)

Broad location: Rest of Rural Area

Use: Employment

Areas of particular importance for biodiversity (APIB):

- No APIB within the site

Areas that could become of particular importance for biodiversity (ACB):

- No ACB within site area.

How does the site allocation or area of Major Change specifically have regard for ACB opportunity?

- N/A

Site: Fulbourn and Ida Darwin Hospitals (S/RRA/FID)

Broad location: Rest of Rural Area

Use: Mixed use

Areas of particular importance for biodiversity (APIB):

- No APIB within the site

Areas that could become of particular importance for biodiversity (ACB):

- Multiple ACBs adjacent to the site.
- ACB Actions adjacent to site:
 - Wo1A: Enhance the management of unmanaged woodlands with a minimum size of 1 hectare to UK Forestry Standards to achieve a varied structure and greater diversity.
 - Wo3B: Deliver wider environmental benefits such as improving water quality, air quality and reduce flood risk through tree and woodland creation in appropriate locations such as upper catchment locations, adjacent to rivers and close to centres of population.
 - G2A: Enhance existing species-rich neutral grassland sites to support the diversity of scarce and common species associated with this habitat.

How does the site allocation or area of Major Change specifically have regard for ACB opportunity?

- Redevelopment must create a landscape green wedge on the western part of the Ida Darwin site to provide a compensatory enhancement to the openness of the Green Belt in this location. This green wedge will also provide enhanced public access to the countryside.
- Development must use a landscape-led approach to site boundary configurations, particularly along the southern boundary of the Ida Darwin Hospital area.

Site: Land adjacent to Cambridge Road (A10) and Mill Lane, Hauxton (S/RRA/CRH)

Broad location: Rest of Rural Area

Use: Employment

Areas of particular importance for biodiversity (APIB):

- No APIB within the site

Areas that could become of particular importance for biodiversity (ACB):

- Multiple ACBs within and adjacent to the site.
- ACB Actions within/adjacent to site:
 - RD3A: Establish natural or semi-natural buffer zones 50 metres wide adjacent to all chalk rivers and their headwaters, winterbourne sections and springs to improve river water quality, and consequently their biodiversity value and ecological functionality.
 - Wo1A: Enhance the management of unmanaged woodlands with a minimum size of 1 hectare to UK Forestry Standards to achieve a varied structure and greater diversity

How does the site allocation or area of Major Change specifically have regard for ACB opportunity?

- Development should take a landscape led approach, and deliver a planted landscape edge including trees along the northern and western edges of the site.

Site: Land at Buckinghamway Business Park (S/RRA/BBP)

Broad location: Rest of Rural Area

Use: Employment

Areas of particular importance for biodiversity (APIB):

- No APIB within the site

Areas that could become of particular importance for biodiversity (ACB):

- No ACB within site area.

How does the site allocation or area of Major Change specifically have regard for ACB opportunity?

- N/A

Site: Land at Highfields (phase 2), Caldecote (S/RRA/H)

Broad location: Rest of Rural Area

Use: Housing

Areas of particular importance for biodiversity (APIB):

- No APIB within the site

Areas that could become of particular importance for biodiversity (ACB):

- No ACB within site area.

How does the site allocation or area of Major Change specifically have regard for ACB opportunity?

- N/A

Site: Land to the north of St Neots Road, Dry Drayton (S/RRA/SNR)

Broad location: Rest of Rural Area

Use: Employment

Areas of particular importance for biodiversity (APIB):

- No APIB within the site

Areas that could become of particular importance for biodiversity (ACB):

- ACB within site area. ACB action within site:
 - Wo1A: Enhance the management of unmanaged woodlands with a minimum size of 1 hectare to UK Forestry Standards to achieve a varied structure and greater diversity

How does the site allocation or area of Major Change specifically have regard for ACB opportunity?

- Development proposals must enhance the existing southern hedgerow to provide visual screening and include trees of forest scale and understorey planting.

Site: Land to the south of Cambridge Services, A14 (S/RRA/SCS)

Broad location: Rest of Rural Area

Use: Employment

Areas of particular importance for biodiversity (APIB):

- No APIB within the site

Areas that could become of particular importance for biodiversity (ACB):

- ACB within site Boundary.
- ACB action within site:
 - Wo6A: Create wet woodland within appropriate hydrological areas, consisting of native or climate change resilient (European only) species.
- In close proximity to 3 smaller ACB areas.

How does the site allocation or area of Major Change specifically have regard for ACB opportunity?

- Policy requires that proposals have site boundaries to provide landscape buffers of a minimum of 25m wide to mitigate adverse landscape impacts of built form and light pollution as well as the provision of open space and tree planting through the site as part of a landscape led masterplan. Existing hedges are to be retained.
- Existing balancing ponds are to be re-profiled and watercourse utilised and enhanced for biodiversity net gain and to address surface water flooding. Existing watercourses to be utilised and enhanced, with further native planting within the drainage proposals.

Site: Land to the west of Cambridge Road, Melbourn (S/RRA/CR)

Broad location: Rest of Rural Area

Use: Mixed use

Areas of particular importance for biodiversity (APIB):

- No APIB within the site

Areas that could become of particular importance for biodiversity (ACB):

- No ACB within site area.

How does the site allocation or area of Major Change specifically have regard for ACB opportunity?

- N/A

Site: Norman Way, Over (S/RRA/NW)

Broad location: Rest of Rural Area

Use: Employment

Areas of particular importance for biodiversity (APIB):

- No APIB within the site

Areas that could become of particular importance for biodiversity (ACB):

- ACB within site area. ACB action within site:
 - Wo3B: Deliver wider environmental benefits such as improving water quality, air quality and reduce flood risk through tree and woodland creation in appropriate locations such as upper catchment locations, adjacent to rivers and close to centres of population.

How does the site allocation or area of Major Change specifically have regard for ACB opportunity?

- Development proposals should retain and enhance the treescape buffer within the southern and eastern sides of the site.

Site: Old Highways Depot, Twenty Pence Lane, Cottenham (S/RRA/OHD)

Broad location: Rest of Rural Area

Use: Employment

Areas of particular importance for biodiversity (APIB):

- No APIB within the site

Areas that could become of particular importance for biodiversity (ACB):

- Multiple ACBs adjacent to the site.

- **ACB Actions adjacent to site:**
 - G2A: Enhance existing species-rich neutral grassland sites to support the diversity of scarce and common species associated with this habitat.
 - RD1A: Establish natural or semi-natural buffer zones 50 metres wide adjacent to all rivers to improve river water quality, and consequently their biodiversity value and ecological functionality.

How does the site allocation or area of Major Change specifically have regard for ACB opportunity?

- Policy requires development to retain the natural screening provided by trees along the road frontage. The site's landscape boundaries should be retained and enhanced, including provision of a native buffer up to 10 metres on the western boundary and landscape and ecology within the site itself.

Site: The Moor, Moor Lane, Melbourn (S/RRA/ML)

Broad location: Rest of Rural Area

Use: Housing

Areas of particular importance for biodiversity (APIB):

- No APIB within the site

Areas that could become of particular importance for biodiversity (ACB):

- No ACB within site area.

How does the site allocation or area of Major Change specifically have regard for ACB opportunity?

- N/A