

Viewpoint J2: Worts' Causeway / Shelford Road

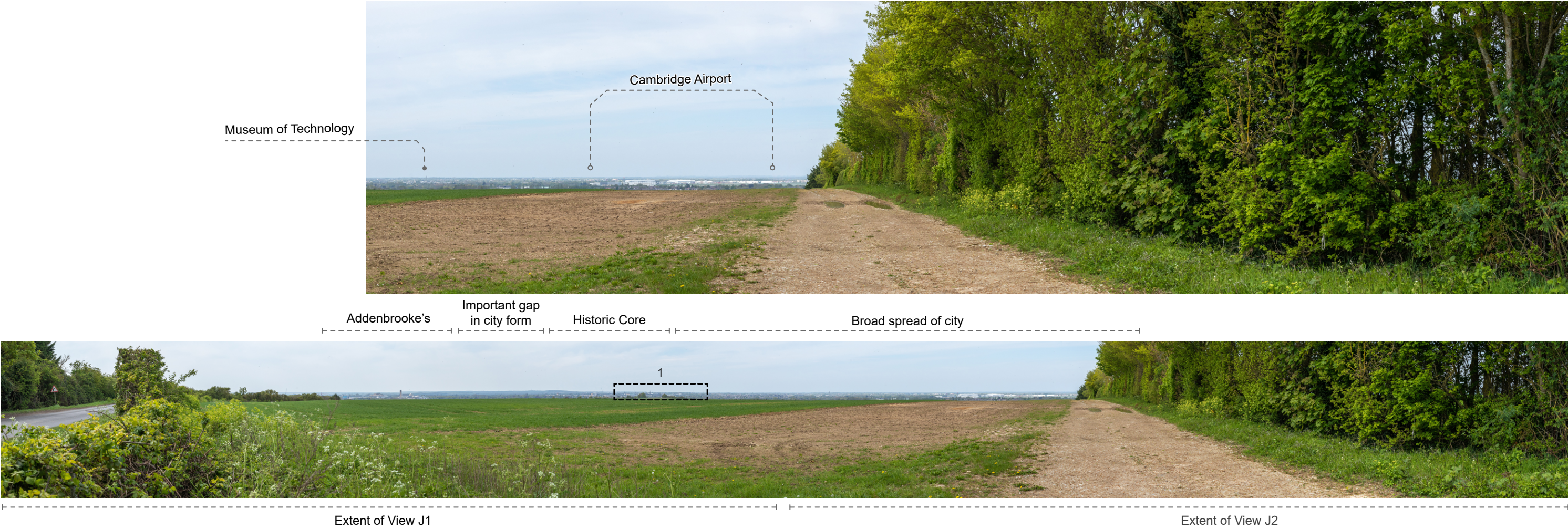


Image Description

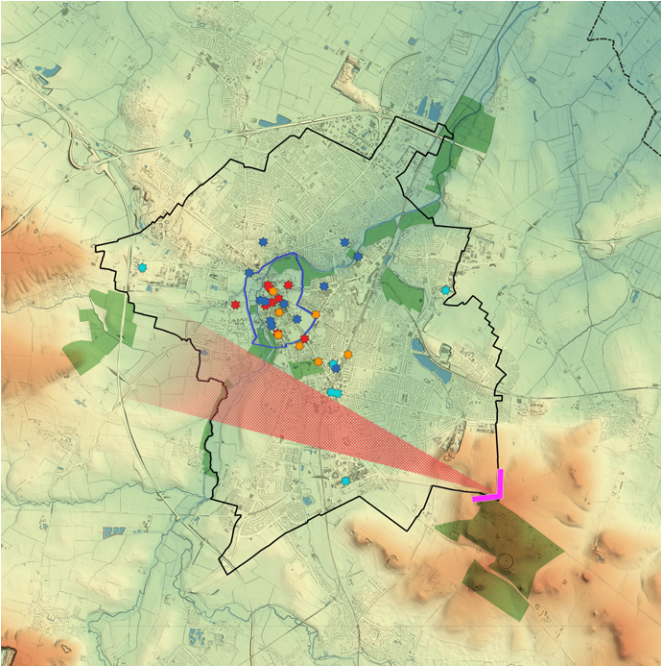
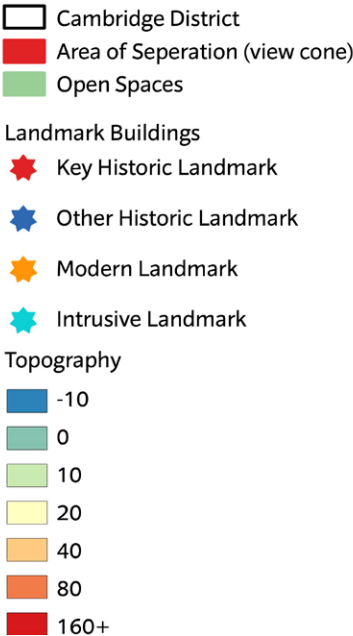
Top: View J2, a 90° static panorama from the historic Worts' Causeway approach to Cambridge, providing a broad perspective of the city's skyline from the west. The image is annotated to indicate key points in the city's skyline.

Bottom: A 180° static panorama from the same viewpoint, annotated to point out key elements within the landscape. The extent of views J1 and J2, as well as the silhouetted enlargements on the following page are annotated.

Right: A map highlighting the area of separation in relation to Cambridge, denoted by a red view cone.

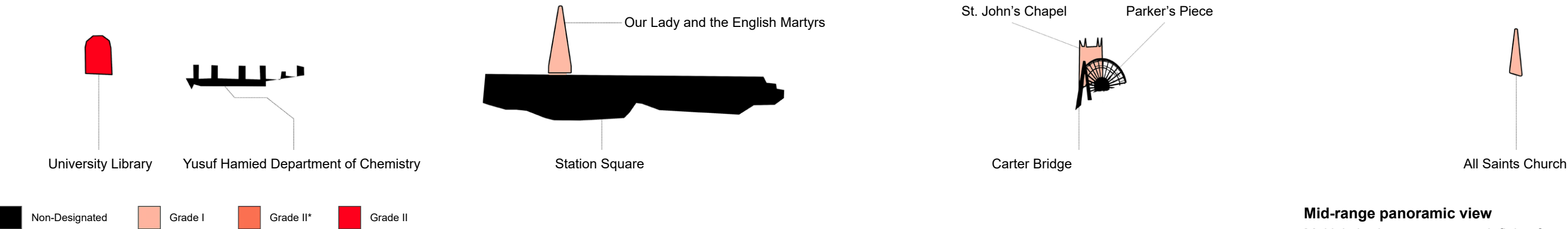
Key Elements and Sensitivities

- A heavily treed view, dominated by a track leading north into Cambridge. The views down into the city are bracketed by the Museum of Technology on the eastern edge of the Historic Core and Cambridge Airport, which stands in low profile.
- Cambridge City Airport has a relatively high visual magnitude, due largely to its lack of tree cover south of the runway. Moreover, the bright white colour of the complex's hangars is visually arresting, contrasting the comparably rural surroundings. This view is significant, as the airport marks the eastern extremity of Cambridge before it abruptly leads into rural fields.
- The right half of the image is completely obscured by the treeline, blocking the rural outskirts east of Cambridge. The significance of such obscuration should be noted, as this example exemplifies the treed landscapes typical of the region, visible here in the foreground.
- The chimney of the Museum of Technology (the Old Cheddar's Lane pumping station) is easily noticeable in the landscape. Despite standing approximately 5.5 kilometres away, it commands significant visual attention due to its size and prominence. This emphasises how industrial architecture has made a notable impact on the city's skyline. However, the chimney's solitary presence on the skyline also highlights the scarcity of industrial buildings in Cambridge's overall landscape, showcasing their limited survival in the area.



Strategic Viewpoint J

Viewpoint J: Worts' Causeway / Shelford Road



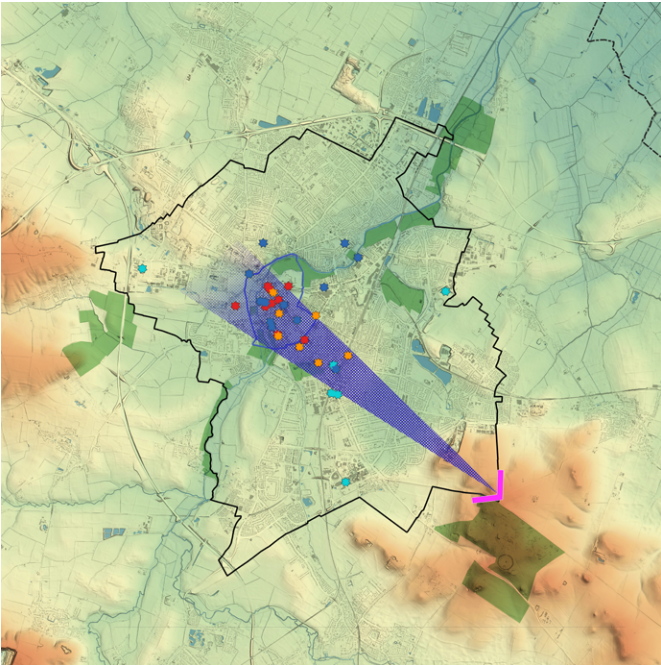
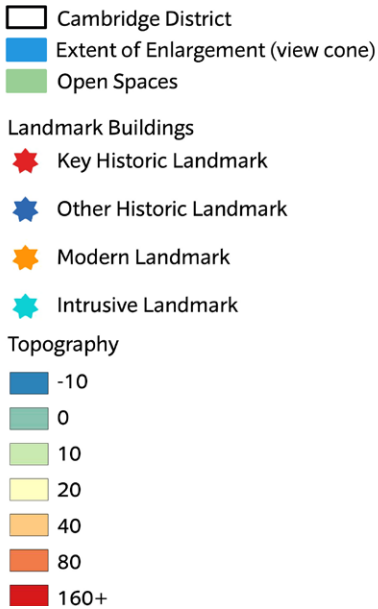
Mid-range panoramic view
Multiple heritage assets are defining features of the central part of the skyline in this view.
Separation between Addenbrooke's complex/historic core/ Cambridge East is key for legibility of the historic core.

Image Description

Top: An enlargement taken from the 180° static panorama of Viewpoint J, visualising the visual magnitude of the numerous towers within the historic core.

Right: A map showing the extent of the enlargement, denoted by a blue view cone.

See previous page for the scale of each enlargement.



Strategic Viewpoint J

Viewpoint K1: Little Wilbraham Road over A14

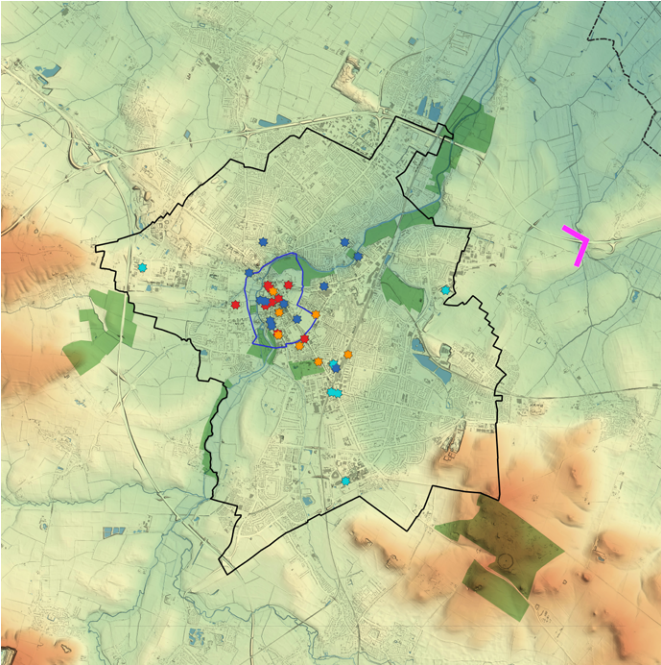
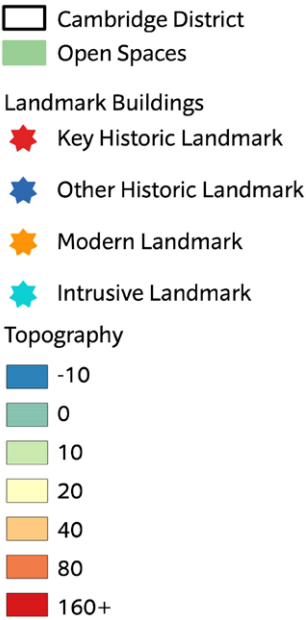


Image Description

Top: View K1, a 90° long distance view over the A14 towards Cambridge, providing a broad perspective of the city’s skyline from the west. The image is annotated to indicate key points in the city’s skyline.

Key Elements and Sensitivities

- A largely obscured view, dominated by trees lining the A14. The gap created by the span of the A14 permits compact views into the city, bracketed by Addenbrooke’s to the south and Cambridge Airport to the north. The skyline is very subtle from this viewpoint, with few buildings contrasting against the horizon.
- Cambridge City Airport possesses a relatively high visual prominence, primarily attributed to the absence of tree coverage to the east of its runway. Additionally, the bright white hue of the airport’s hangars creates a visual contrast with the predominantly rural environment. This particular vista holds significance as it demonstrates the abruptness of Cambridge’s skyline, with the airport visible before rural fields.
- The spire of the Church of Our Lady and the English Martyrs is easily visible in the landscape. Despite standing approximately 5.5 kilometres away, it commands significant visual attention due to its size and prominence. This emphasises how industrial architecture has made a notable impact on the city’s skyline. However, the chimney’s solitary presence on the skyline also highlights the scarcity of industrial buildings in Cambridge’s overall landscape, showcasing their limited survival in the area.
- The right quarter of the image is predominantly obscured by the treeline north of the A14, resulting in an obstruction of Cambridge’s rural northern outskirts. This serves as an illustrative example of the treed landscapes characteristic of the region..



Strategic Viewpoint K

Viewpoint K2: Little Wilbraham Road over A14

Very long range glimpsed view

Heritage assets are not significant defining features of the skyline- few are discernible in this view e.g. Our Lady and the English Martyrs. Assets that can be identified are mostly obscured by the treeline.

Cambridge Airport



Mostly obscured foreground looking out over the rural south of Cambridge Addenbrooke's Gap Historic Core Rural midground with few built features. Entirely obscured foreground and midground, with heavy traffic.



Extent of View K1 Extent of View K2

Image Description

Top: View K2, a 90° static panorama over the A14 towards Cambridge, providing a broad perspective of the city's skyline from the west. The image is annotated to indicate key points in the city's skyline.

Bottom: A 180° static panorama from the same point, annotated to point out key elements within the landscape.

Key Elements and Sensitivities

- A largely obscured view, dominated by trees lining the A14. The gap created by the span of the A14 permits compact views into the city, bracketed by Addenbrooke's to the south and Cambridge Airport to the north. The skyline is very subtle from this viewpoint, with few buildings contrasting against the horizon.
- Cambridge City Airport possesses a relatively high visual prominence, primarily attributed to the absence of tree coverage to the east of its runway. Additionally, the bright white hue of the airport's hangars creates a visual contrast with the predominantly rural environment. This particular vista holds significance as it demonstrates the abruptness of Cambridge's skyline, with the airport visible before rural fields.
- The spire of the Church of Our Lady and the English Martyrs is easily visible in the landscape. Despite standing approximately 5.5 kilometres away, it commands significant visual attention due to its size and prominence. This emphasises how industrial architecture has made a notable impact on the city's skyline. However, the chimney's solitary presence on the skyline also highlights the scarcity of industrial buildings in Cambridge's overall landscape, showcasing their limited survival in the area.
- The right quarter of the image is predominantly obscured by the treeline north of the A14, resulting in an obstruction of Cambridge's rural northern outskirts. This serves as an illustrative example of the treed landscapes characteristic of the region.