

Viewpoint G2: M11 between Junctions 12 and 13

Heritage assets are not defining features of the skyline - few are discernible in this view e.g. University Library. Those that can be identified are mostly obscured by the treeline. Separation between West Cambridge/historic is key for legibility of the historic core.

The Church of Our Lady and the English Martyrs



Cambridge West development is a string feature on the skyline

Mostly unbroken treed skyline, with Historic Core and Cambridge beyond.



Extent of View H1

Extent of View H2

Image Description

**Top:** View G2, a 90° panorama from a footpath beside the M11 Junction 12 and 13, providing a broad perspective of Cambridge's city skyline. The image is annotated to indicate key points in the city's skyline.

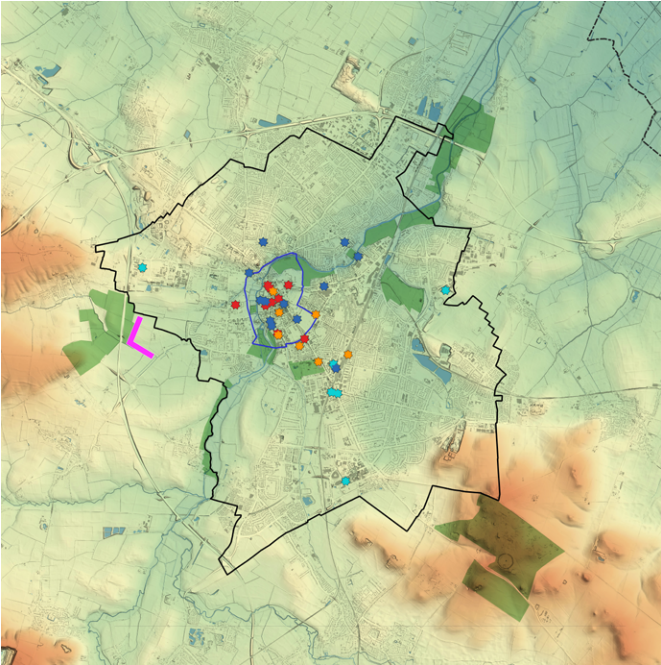
**Bottom:** A 180° static panorama, annotated to point out key elements within the landscape. The extent of views G1 and G2 are annotated below.

**Right:** A map highlighting the position of the viewpoint in relation to Cambridge.

Key Elements and Sensitivities

- The midground of the image is comprised of a mostly unbroken treed skyline, masking large portions of the views into Cambridge and its Historic Core. This provides a strong sense of rurality. The view is, therefore, moderately sensitive to development, particularly tall buildings breaking the skyline.
- The view is almost entirely rural, with few features in the skyline tying the landscape to that of urban Cambridge. Furthermore, the gentle slope of the landscape blocks background elements, seen elsewhere (i.e., distant hills etc.). This removes context from the landscape. Currently, only minor architectural elements breaking the skyline provide context to the viewpoints situation.
- The spire of the Church of Our Lady and the English Martyrs is the only church to break the skyline. However, this is mostly hidden from view behind midground trees. The spire, as well as the tower of the University Library, are commonly observed from the western outskirts of Cambridge, suggesting they are among the most visually magnitudinous buildings from that angle. View of the building are moderately sensitive to change.
- The M11 provides a discordant aural backdrop for viewing.

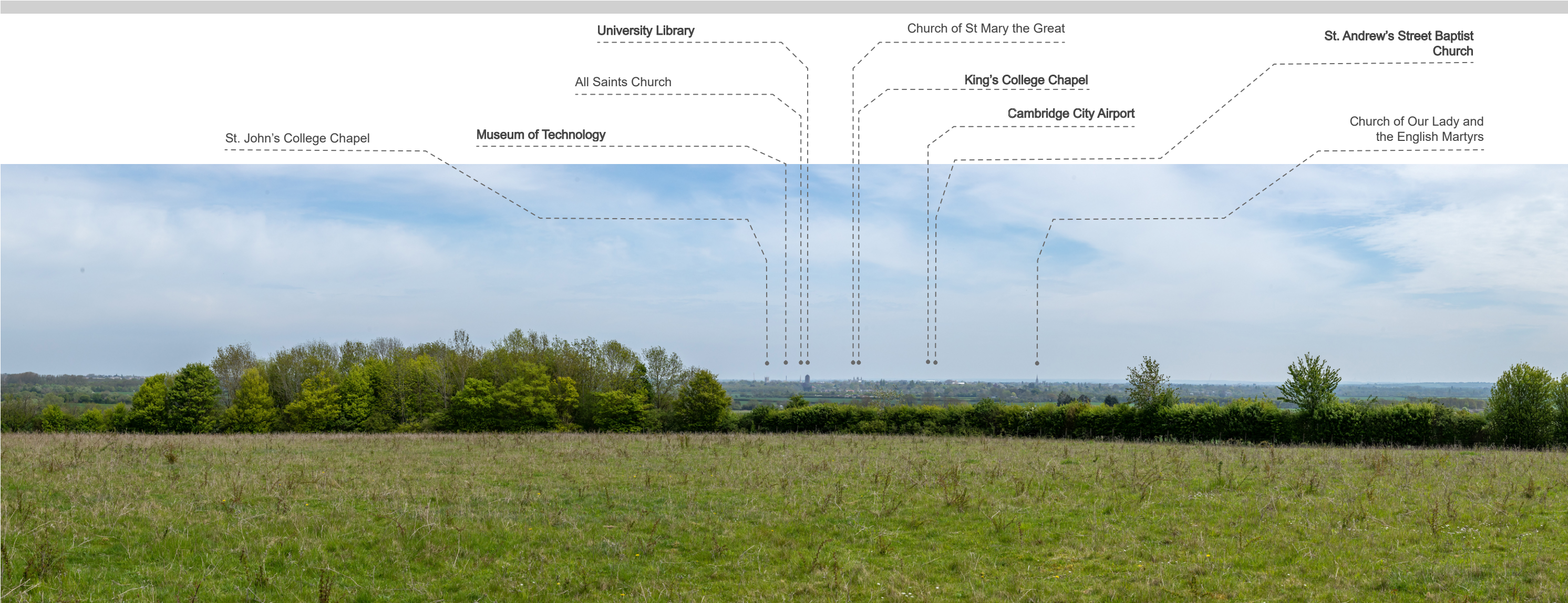
- Cambridge District
- Open Spaces
- Landmark Buildings
  - Key Historic Landmark
  - Other Historic Landmark
  - Modern Landmark
  - Intrusive Landmark
- Topography
  - 10
  - 0
  - 10
  - 20
  - 40
  - 80
  - 160+



Strategic Viewpoint G



# Viewpoint H1: Redmeadow Hill



## Image Description

**Top:** View H1, a 90° static panorama from Redmeadow Hill, looking northeast, providing a broad perspective of the city's skyline from the west. The image is annotated to indicate key points in the city's skyline.

## Key Elements and Sensitivities

- An important panoramic view of Cambridge in its rural context and setting, with meadows visible in the foreground. The spires of All Saints Church, St. John's Chapel, The Church of St. Mary's The Great, The Church of Our Lady and the English Martyrs, and Kings College Chapel contrast conspicuously against the horizon. Additionally, the University Library, and the chimney of the Museum of Technology, are prominent.
- The treed foreground blocks views of much of Cambridge's urban extent, allowing views of Cambridge's rural backdrop. However, from the viewpoint, clear views of the Historic Core are framed by the foliage, particularly the area between King's and St John's Colleges. Therefore, the view is significant in its ability to provide picturesque upland views of the historic core in relative isolation. Highly sensitive to change.
- From this vantage point, links between Cambridge's Historic Core and its surrounding rural settlements to the north is evident. The south end of Girton is visible to the left of the trees, with Madingley's rural outskirts visible in the foreground. Sensitive to change, providing an important context for the Core.
- West Cambridge is prominent in the view, but is separated from the core and other areas of the city. However, the foreground is comprised of dense foliage, which partially obscures the cityscape. This reduces the visual impact of West Cambridge while preserving some of the natural character of the area. Where visible, the visual magnitude of West Cambridge is high due to its close proximity. Low sensitivity to change.
- There is a notable area of separation between developments in West Cambridge and the Historic Core. This falls just right of the wooded area on the left of the image (see (A) on the following page).



Viewpoint H2: Redmeadow Hill

Location of  
Addenbrooke's Hospital



The south end of Girton    West Cambridge development, largely hidden from view by dense foliage.    (A) Area of Separation    Historic Core    The mostly rural southern extent of city.



Extent of View H1

Extent of View H2

Image Description

**Top:** View H2, a 90° static panorama from Redmeadow Hill, looking southeast, providing a broad perspective of the city's skyline from the west. The image is annotated to indicate key points in the city's skyline.

**Bottom:** A 180° static panorama from the same point, annotated to point out key elements within the landscape. The extent of views H1 and H2, as well as the silhouetted enlargements on the following page are annotated, 1 and 2.

**Right:** A map highlighting the area of separation of the viewpoint in relation to Cambridge, denoted by a red view cone.

Key Elements and Sensitivities

- This is an important panoramic view of the rural landscape south of Cambridge in its relatively undeveloped context. It is largely treed and with meadows in the foreground. The Historic Core is not visible from this angle.
- The view demonstrates the abruptness of the city's profile, giving way to immediate rurality upon its termination. Furthermore, the contiguous nature of the city, without sprawling areas of urbanisation bleeding off from it, is easy to witness from this vantage point. This further exemplifies the importance of the Historic Core, and its relatively close-set skyline. Low sensitive to change.
- The view encompasses a relatively undeveloped treed skyline; it is sensitive to change and provides an important context for the Historic Core. Addenbrooke's Hospital sits prominent in the view, but is largely separated from the core and other areas, and blocked by foliage. Low sensitivity to change.
- Large areas of the view are rural, with an elevated distant backdrop. Changes in the region's topography are clear in the background, with Cambridge sitting in a shallow valley between the backdrop and the viewpoint.
- There is a notable area of separation between developments in West Cambridge and the Historic Core (A). This falls just right of the wooded area on the left of the image. High sensitivity to change.

Cambridge District

Area of Separation (view cone)

Open Spaces

Landmark Buildings

Key Historic Landmark

Other Historic Landmark

Modern Landmark

Intrusive Landmark

Topography

-10

0

10

20

40

80

160+

Strategic Viewpoint H

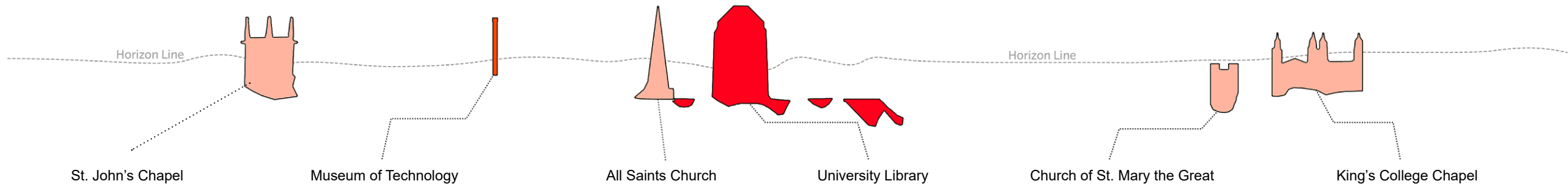
27



Viewpoint H: Redmeadow Hill



**Long range panoramic view**  
Multiple heritage assets are defining features of the skyline in this view, including legible compact historic core.



- Non-Designated
- Grade I
- Grade II
- Scheduled Monument

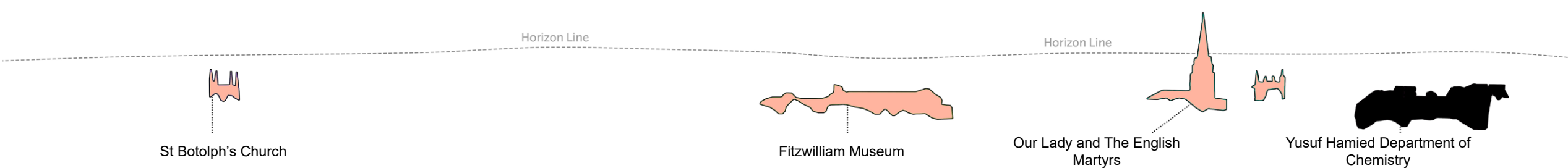


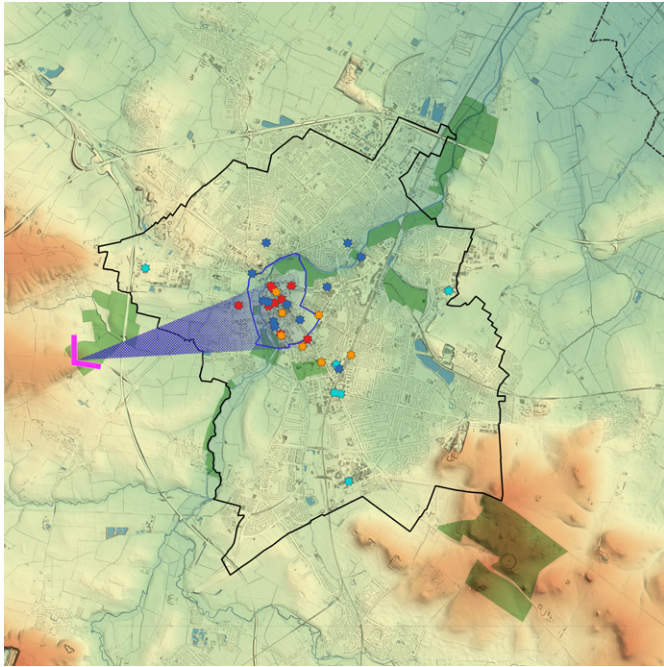
Image Description

**Top:** Two enlargements of view H, centred on the historic core, visualising the visual magnitude of the numerous towers within the historic core.

**Right:** A map showing the extent of the enlargement, denoted by a blue view cone.

See previous page for the scale of each enlargement.

- Cambridge District
- Extent of Enlargement (view cone)
- Open Spaces
- Landmark Buildings
  - Key Historic Landmark
  - Other Historic Landmark
  - Modern Landmark
  - Intrusive Landmark
- Topography
  - 10
  - 0
  - 10
  - 20
  - 40
  - 80
  - 160+



Strategic Viewpoint H