

Viewpoint F1: Little Trees Hill, Magog Down



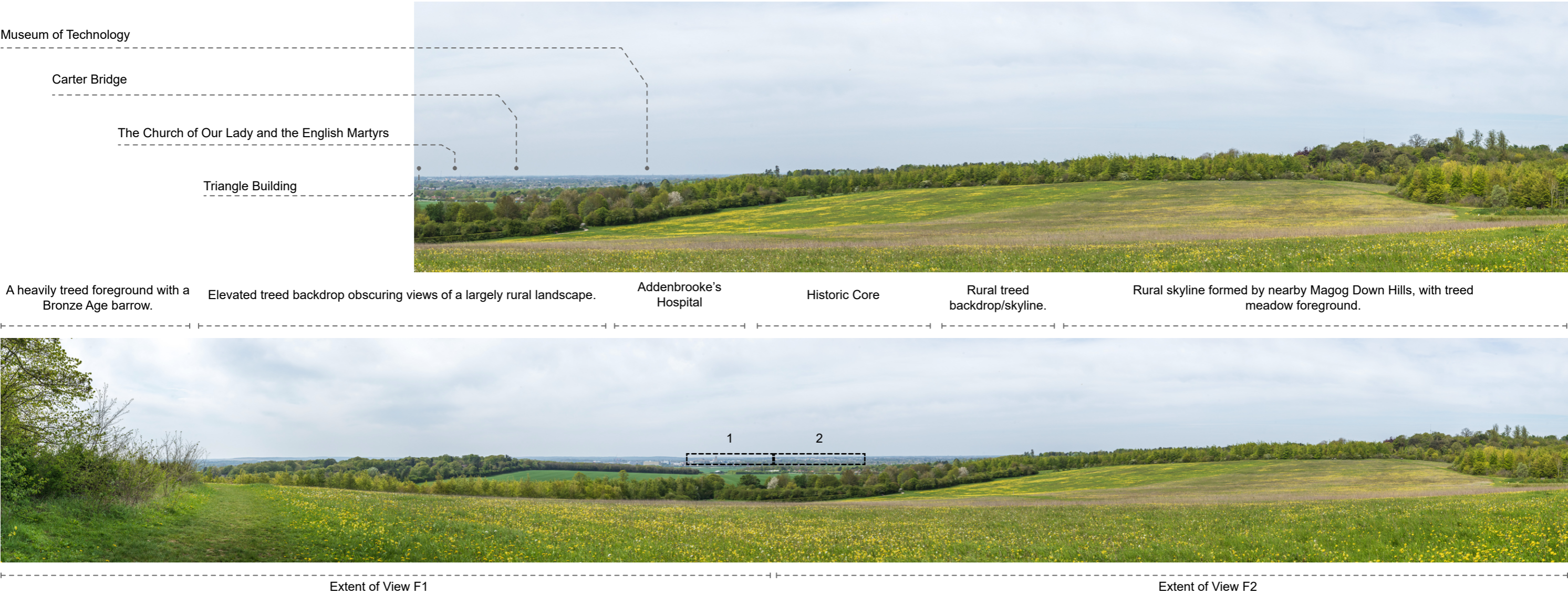
Image Description

**Top:** View F1, a 90° static panorama from Little Trees Hill, providing a broad perspective of the Cambridge’s city skyline from a footpath on Magog Down. The image is annotated to indicate key points in the city’s skyline.

Key Elements and Sensitivities

- An important panoramic view of Cambridge in its rural context and setting, with meadows visible in the foreground. The tower of the University Library and the chimney of Addenbrooke’s Hospital contrast conspicuously against the horizon. Modern developments, such as the Triangle Buildings, have a relatively high visual magnitude.
- The spread of trees obscures a significant portion of Cambridge’s urban landscape. Nonetheless, the foliage frames clear views of the city, notably the area between Addenbrooke’s and the Museum of Technology. Thus, this view holds great significance as it offers an elevated perspectives of the historic core, framed between two conspicuous buildings. It is highly susceptible to alterations.
- The historic core is small in the view, while modern developments in South Cambridge are dominant. This observance is clear when observing the University Library Tower, which appears comparably small to the Triangle Building that stands to the immediate right. King’s College Chapel, too, is largely dwarfed by Yusuf Hamied Department of Chemistry Building in its foreground.
- The presence of the Addenbrooke’s complex draws attention, yet it stands distinct from the historical core. This distinction is emphasised by the Cambridge University Library Tower, marking the core’s western boundary. The complex itself is low sensitivity, albeit within certain limitations.
- The backdrop surrounding Cambridge is largely rural, helping to blend the city into the wider landscape. It possesses a moderate sensitivity to change, especially when it comes to larger-scale development.
- The foreground is dominated by the Magog Down Hills, a rolling landscape with treed meadows.

# Viewpoint F2: Little Trees Hill, Magog Down



## Image Description

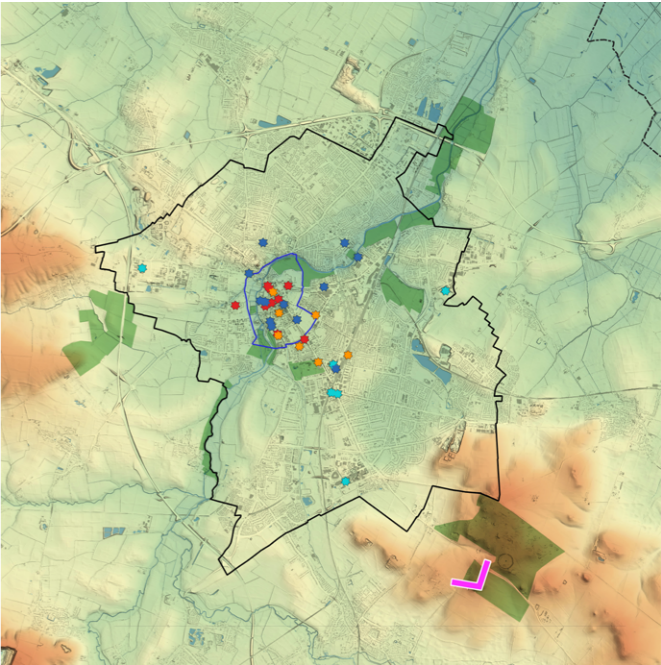
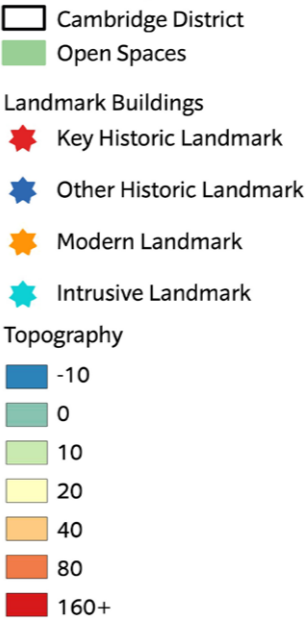
**Top:** view F2, a 90° view of Cambridge, providing a broad perspective of the city's skyline from a footpath on Magog Down. The image is annotated to indicate key points in the city's skyline.

**Bottom:** A 180° static panorama from the same viewpoint, annotated to point out key elements within the landscape. The extent of views F1 and F2, as well as the silhouetted enlargements on the following page are annotated, 1 and 2.

**Right:** A map highlighting the position of the viewpoint in relation to Cambridge.

## Key Elements and Sensitivities

- An important panoramic view of Cambridge in its rural context and setting, with meadows visible in the foreground. The tower of the University Library and the chimney of Addenbrooke's Hospital contrast conspicuously against the horizon. Modern developments, such as the Triangle Buildings, have a relatively high visual magnitude.
- The spread of trees obscures a significant portion of Cambridge's urban landscape, creating a contrast with its rural backdrop. Nonetheless, when observing from this vantage point, the foliage frames clear views of the Historic Core, notably the area between Addenbrooke's and the Museum of Technology. Thus, this view holds great significance as it offers an elevated perspectives of the historic core, framed between two conspicuous buildings. It is highly susceptible to alterations.
- The backdrop surrounding Cambridge is largely rural, helping to blend the city into the wider landscape. It possesses a moderate sensitivity to change, especially when it comes to larger-scale development.
- The foreground is dominated by the Magog Down Hills, a rolling landscape with their treed meadows.



Strategic Viewpoint F

Viewpoint F: Little Trees Hill, Magog Down



**Long range panoramic view**  
Heritage assets are not defining features of the skyline- few are discernible in this view. However, compact historic core is legible.

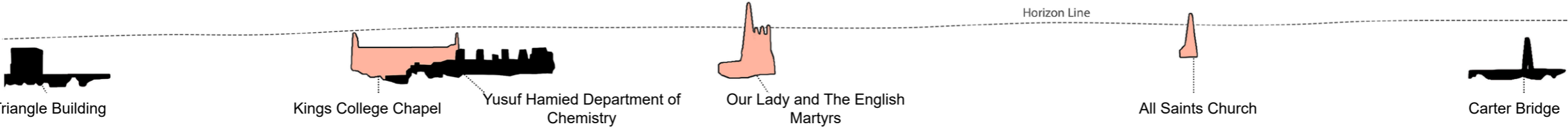
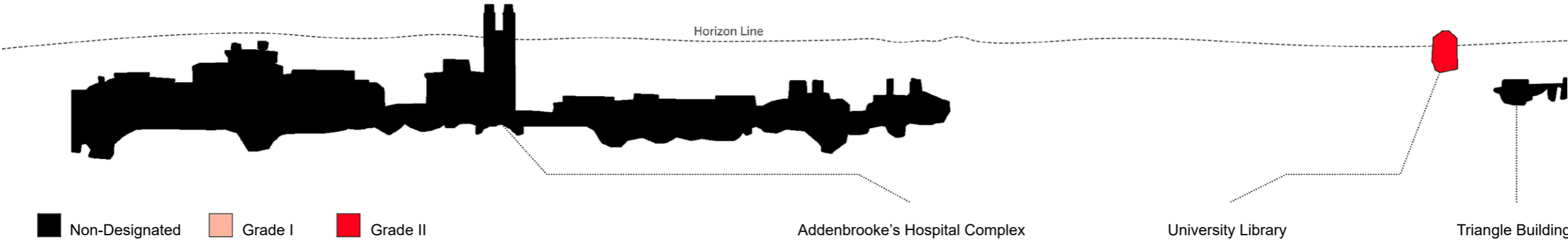


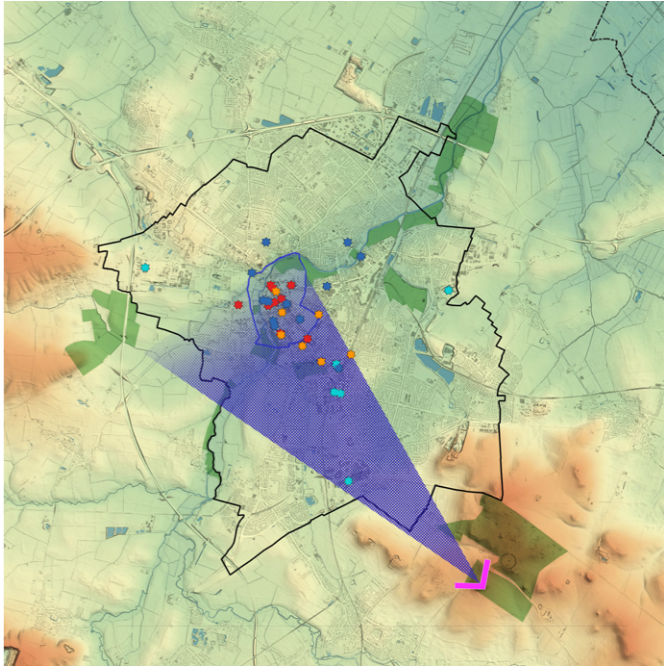
Image Description

**Top:** Multiple enlargements taken from the 180° static panorama of Viewpoint F, visualising the visual magnitude of the numerous towers within the historic core.

**Right:** A map highlighting the position of the enlargement in relation to Cambridge, denoted by a blue view cone.

See previous page for the scale of each enlargement.

- Cambridge District
- Extent of Enlargement (view cone)
- Open Spaces
- Landmark Buildings
  - Key Historic Landmark
  - Other Historic Landmark
  - Modern Landmark
  - Intrusive Landmark
- Topography
  - 10
  - 0
  - 10
  - 20
  - 40
  - 80
  - 160+



Strategic Viewpoint F

Viewpoint G1: M11 between Junctions 12 and 13

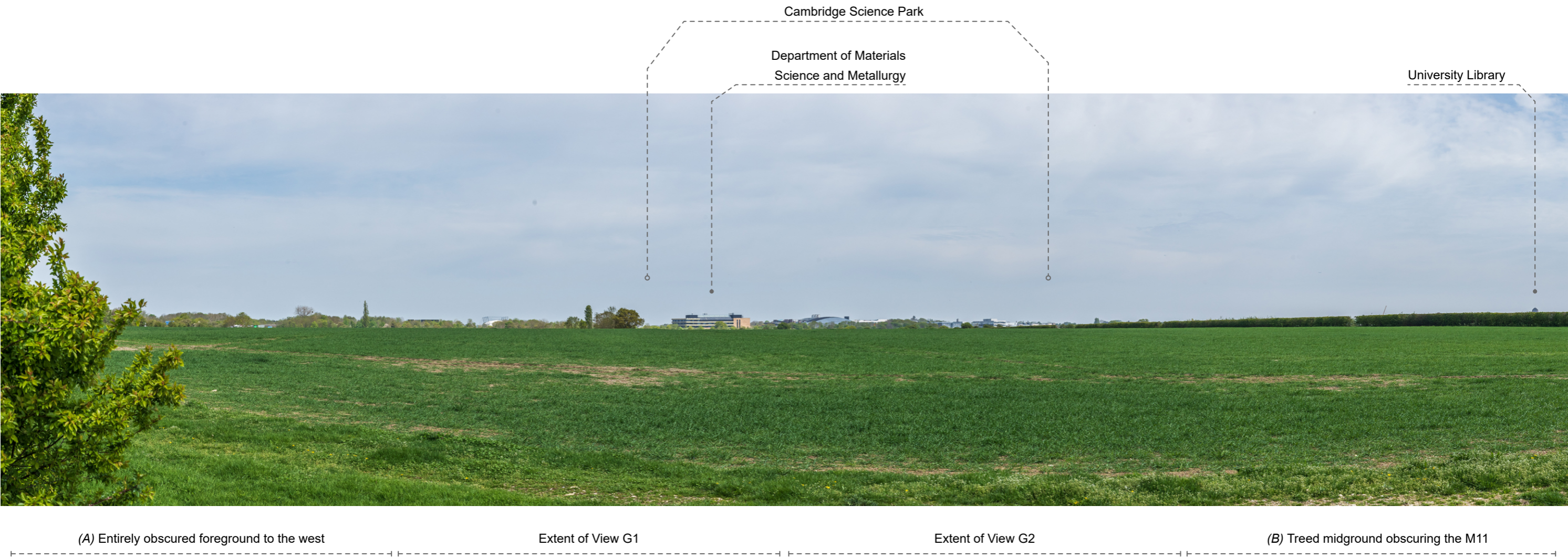


Image Description

**Top:** View G1, a 90° panorama from a footpath beside the M11 Junction 12 and 13, providing a broad perspective of Cambridge’s city skyline. The image is annotated to indicate key points in the city’s skyline.

**Bottom:** A 360° static panorama from the same viewpoint. Annotated to point out the extents of views G1 and G2, as well as number of key landscape elements behind.

Key Elements and Sensitivities

- The midground of the image is comprised of a mostly unbroken treed skyline, masking large portions of the views into Cambridge and its Historic Core. The left of the image is fully obscured by foliage lining the footpath to the west (A). This provides a strong sense of rurality. The view is, therefore, moderately sensitive to development, particularly tall buildings breaking the skyline.
- The Cambridge Science Park is the most prominent feature in view. The Department of Materials Science and Metallurgy is the least obscured of the buildings within the complex. As the Science Park is clearly separated from the wider City, this offers low sensitivity.
- The Cambridge University Library has the only tower within central Cambridge to break the skyline. The tower, as well as the spire of The Church of Our Lady and the English Martyrs, are commonly observed from the western outskirts of Cambridge, suggesting they are among the most visually magnitudinous buildings from that angle. View of the building are moderately sensitive to change.
- The M11 provides a discordant aural backdrop for viewing (B).