

Viewpoint D: Grantchester Road

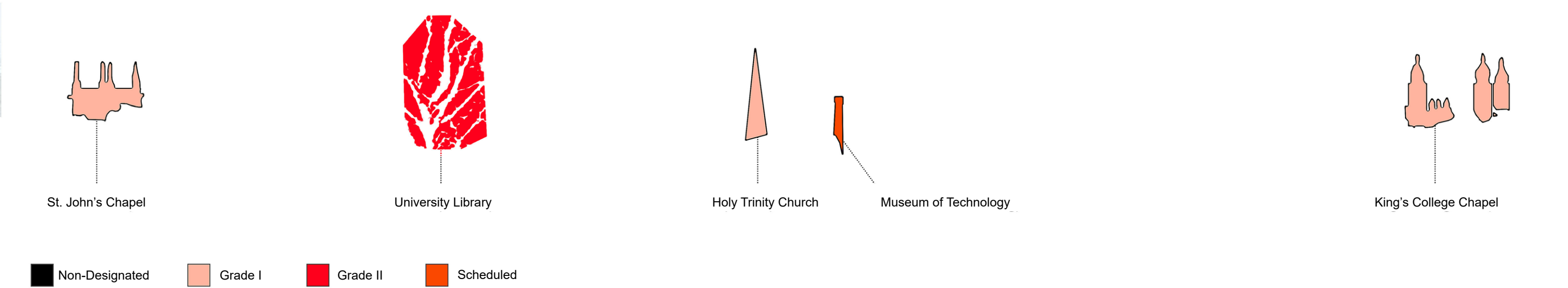
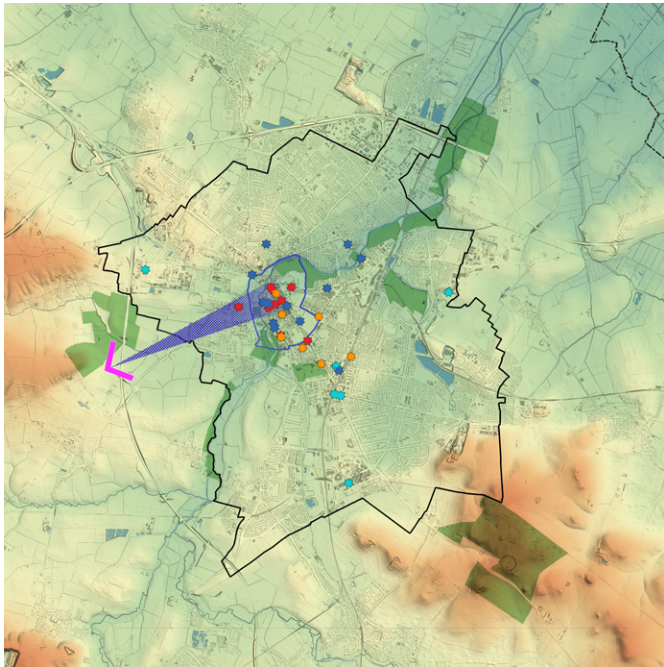
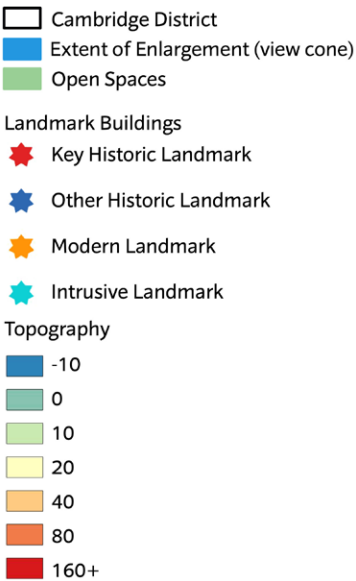


Image Description

Top: A map highlighting the position of the enlargement in relation to Cambridge, denoted by a blue view cone. An enlargement of viewpoint D, centred on the historic core, visualising the visual magnitude of the numerous towers within the historic core.

Right: A map highlighting the position of the enlargement in relation to Cambridge, denoted by a blue view cone.

See previous page for the scale of each enlargement.



Strategic Viewpoint D

Viewpoint E1: Limekiln Road

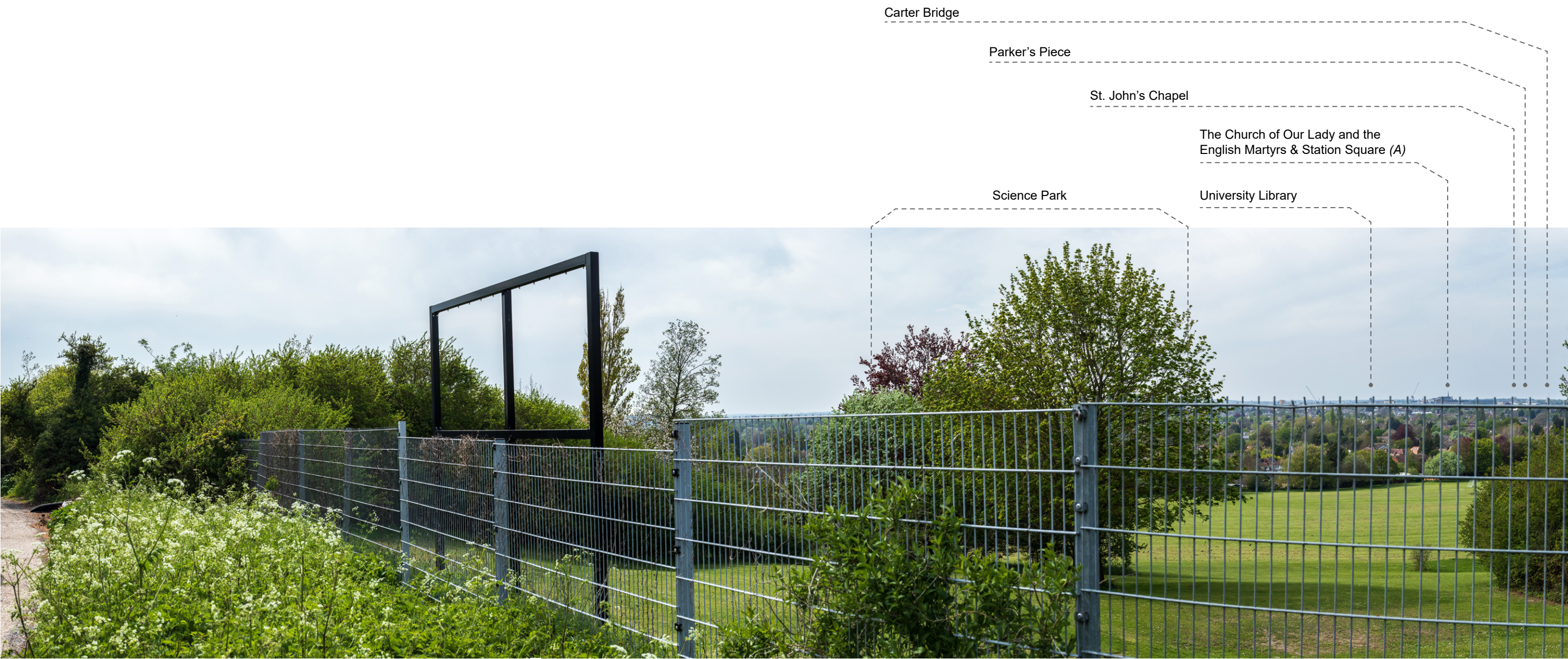


Image Description

Top: View E1, a 90° static panorama from a lay-by just off Limekiln Road, overlooking the grounds of Netherall School. The image is annotated to indicate key points in the city's skyline.

Key Elements and Sensitivities

- The viewpoint sits in a lay-by off Limekiln Road, to the southeast of Cambridge. The fence in the immediate foreground, as well as the majority of the midground and its treed areas, belong to the school yard of Netherall School. The fence, in particular, blocks significant portions of the view.
- The Historic Core features prominently in parts of the view, with key elements breaking the skyline. The Cambridge University Library is prominent, breaking the skyline in relative isolation. To the right of this, a dense collection of buildings is visible. This includes St. John's Chapel, the Parker's Piece Ferris wheel, Carter Bridge, and The Church of Our Lady and the English Martyrs. The Church of Our Lady and the English Martyrs is the tallest of the collection. The background of this regions is highly sensitive to change.
- Station Square, with its collection of large hotels (the broad side of the Ibis Hotel in particular, {A}), is highly conspicuous in the view, blocking significant portions of the Historic Core.
- The majority of the skyline is largely wooded, often with a distant rural backdrop. The foreground, in particular, is heavily treed. The foreground trees do frame the Historic Core to an extent while blocking the Science Park to the west. This area is moderately sensitive to change.

Viewpoint E2: Limekiln Road

Long range panoramic view

Heritage assets are not defining features of the skyline- few are discernible in this view and those that can be identified are mostly obscured by the treeline.



Large-scale modern development largely hidden by treed foreground

Historic Core

Heavily treed foreground



Extent of View E1

Extent of View E2

Image Description

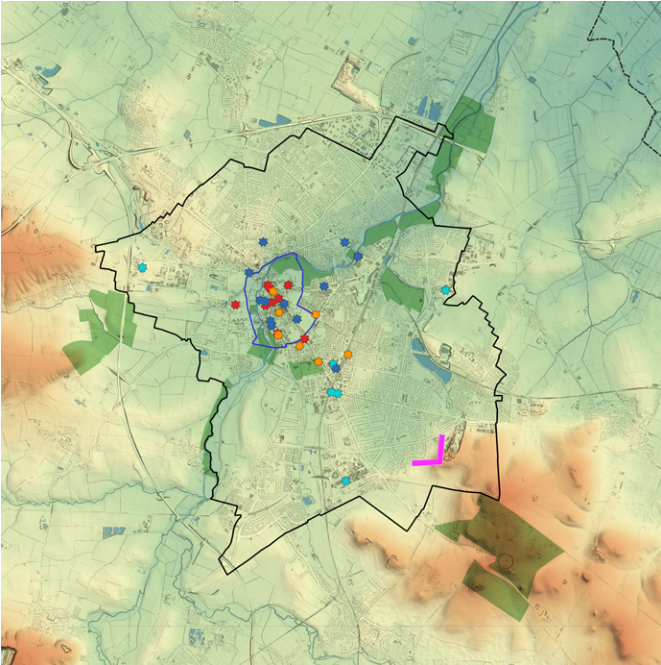
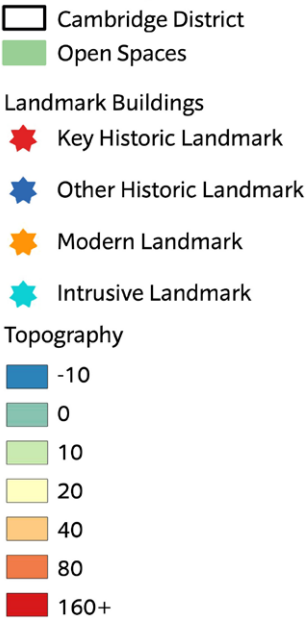
Top: View E2, a 90° static panorama from a lay-by just off Limekiln Road, overlooking the grounds of Netherall School. The image is annotated to indicate key points in the city's skyline.

Bottom: A 180° static panorama from the same viewpoint, annotated to point out key elements within the landscape. The extent of views E1 and E2, as well as the silhouetted enlargement on the following page are annotated.

Right: A map highlighting the position of the viewpoint in relation to Cambridge.

Key Elements and Sensitivities

- View E2 is almost entirely blocked by foreground foliage.



Strategic Viewpoint E

Viewpoint E: Limekiln Road

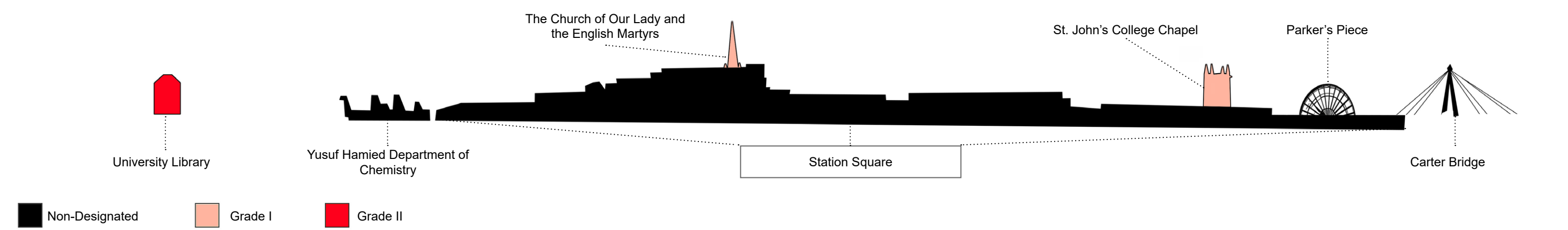
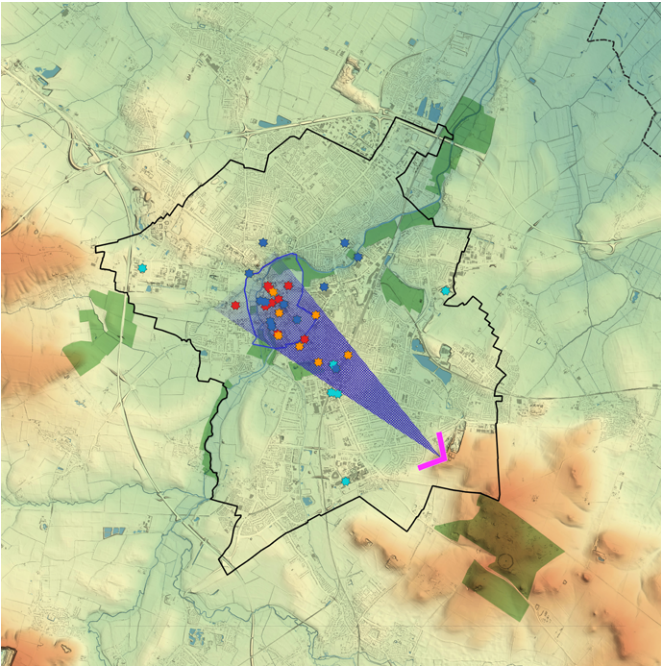
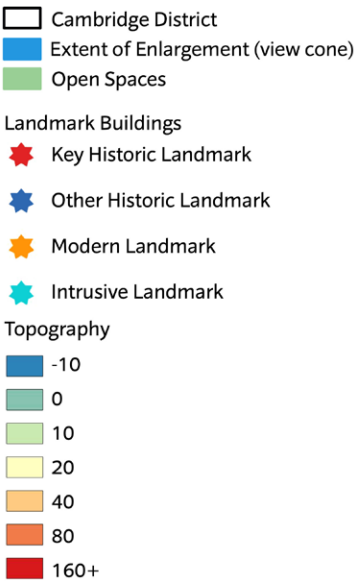


Image Description

Bottom: An enlargement of viewpoint E, centred on the historic core, visualising the visual magnitude of the numerous towers within the historic core.

Right: A map highlighting the position of the enlargement in relation to Cambridge, denoted by a blue view cone.

See previous page for the scale of each enlargement.



Strategic Viewpoint E