

Viewpoint A3: Castle Mound



Image Description

Top: A 360° static panorama from viewpoint A. Annotated to point out the extents of views A1, A2, A3, A4, as well as the silhouetted enlargement above.

Bottom: View A3, a 90° static panorama taken from Important, wide ranging view from a viewpoint on top of scheduled Castle Mound. The image is annotated to indicate key points in the city’s skyline.

Key Elements and Sensitivities

- A highly treed foreground gives way to an otherwise open view towards East Cambridge. Moderate sensitivity to change.
- The left third of the image is completely obscured by the foreground treeline, blocking the suburban outskirts of northern Cambridge. It is important to acknowledge the importance of this obscuration, as it serves as a prime illustration of the treed landscapes characteristic of the region. From here, such landscapes can be clearly observed in the immediate foreground.
- Cambridge City Airport possesses a relatively high visual magnitude, primarily attributed to the absence of tree coverage to the east of its runway. Additionally, the bright white hue of the airport’s hangars creates a visual contrast with the predominantly rural environment. This particular vista holds significance as it demonstrates the abruptness of Cambridge’s skyline, with the airport visible before rural fields.
- The scheduled chimney of the Museum of Technology (Old Cheddar’s Lane pumping station) stands both isolated and prominent in the view, achieving a relatively high visual magnitude despite its distance (of approximately 2km). The scale of the chimney on the horizon demonstrates the impact of the now scarce industrial architecture on Cambridge. Conversely, its isolated nature on the skyline demonstrates the sparsity of industrial buildings on Cambridge’s skyline. Highly sensitive to change.
- Despite the right side of the image leading directly into view A1, the Historic Core is entirely absent from view. Instead, the right third of the image looks out onto a notable gap in the cityscape, between All Saints Church and Cambridge Airport, occupied by 19th to early 20th-century housing developments.

Viewpoint B1: Coton Footpath over the M11

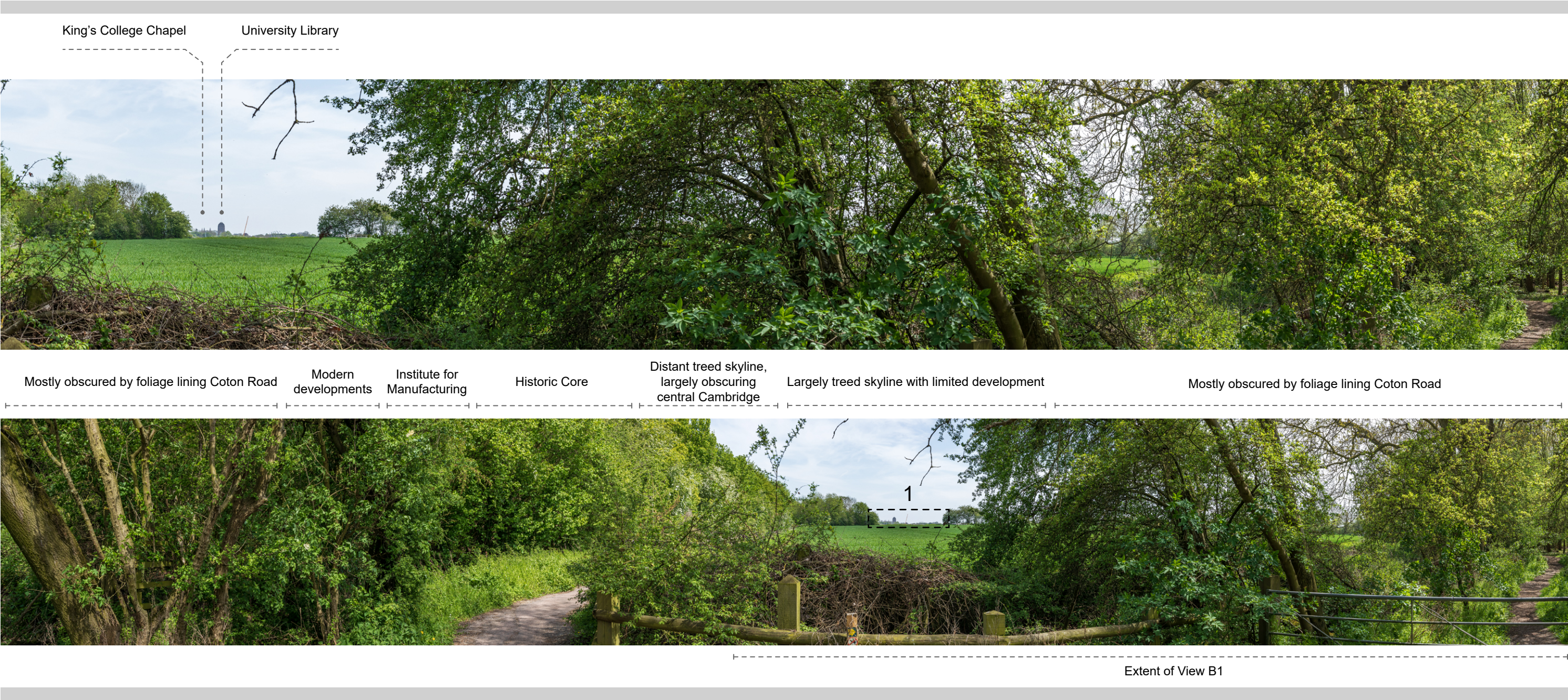


Image Description

Top: View B1, a 90° view from the east side of the M11, where the footpath breaks from woodland cover. The image is annotated to indicate key points in the city’s skyline.

Bottom: A 180° static panorama from the viewpoint B1, annotated to point out the extent of view B1, as well as the silhouetted enlargement .

Key Elements and Sensitivities

- A view from the footpath between the Science Park and the M11, south of the footbridge identified in the 2018 Local Plan. The footbridge is now obscured by motorway screening planting, which has been captured in view B2.
- There are limited views of the Cambridge University Library Tower, and, to a lesser extent, Kings College Chapel. The view showcases a largely obscured rural expanse, characterised by an agricultural landscape and undulating terrain. This middleground scenery exhibits a prevalence of open fields, delineated by lines of trees and wooden fences. The absence of significant human-made structures within the view, save for the towers of King’s College Chapel and University Library, accentuates the rural essence of the view. These towers serve as focal points within the landscape, emerging well-framed from the background between the foliage.
- Given the levels of obsuration present from this viewpoint, it is of limited value and has a relatively low sensitivity. Additionally, as the visual magnitude of the foliage in view remains large throughout the year, obscuring the midground, the view’s limited value remains the same year-round.

Viewpoint B2: Coton Footpath over the M11

The Church of Our Lady and the English Martyrs

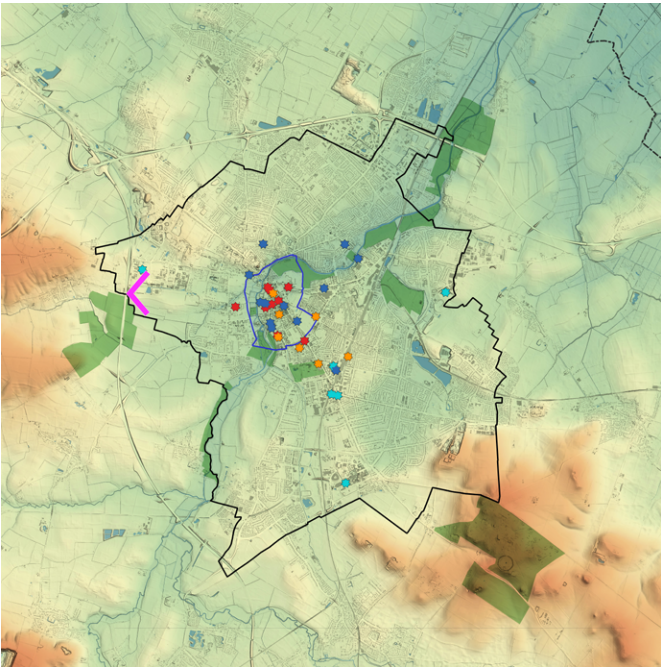


Image Description

Top: View B2, a cropped hand-held photograph from further down the footpath (542096 , 258663), towards Cambridge Science Park. Heading this direction allows for a view of the spire of the Church of Our Lady and the English Martyrs.

Bottom: A view 180° static panorama from the bridge over the M11.

- Cambridge District
- Open Spaces
- Landmark Buildings
 - Key Historic Landmark
 - Other Historic Landmark
 - Modern Landmark
 - Intrusive Landmark
- Topography
 - 10
 - 0
 - 10
 - 20
 - 40
 - 80
 - 160+



Strategic Viewpoint B

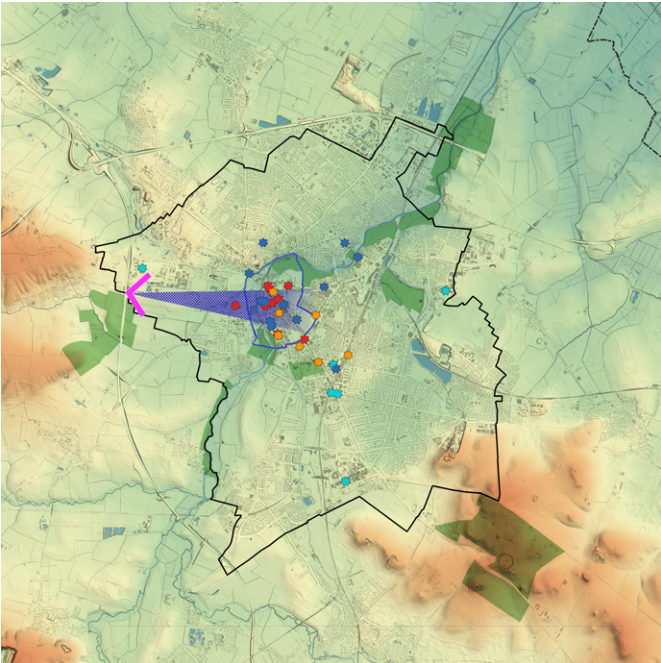
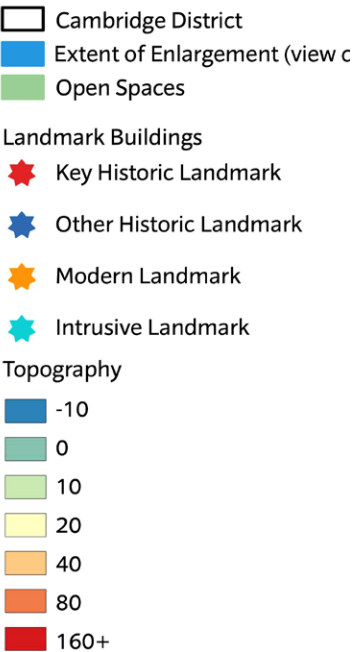
Viewpoint B2: Coton Footpath over the M11



Image Description

Top: An enlargement of view B1, visualising the visual magnitude of the numerous towers visible from viewpoint B1.

Right: A map highlighting the position of the enlargement in relation to Cambridge, denoted by a blue view cone.



Strategic Viewpoint B