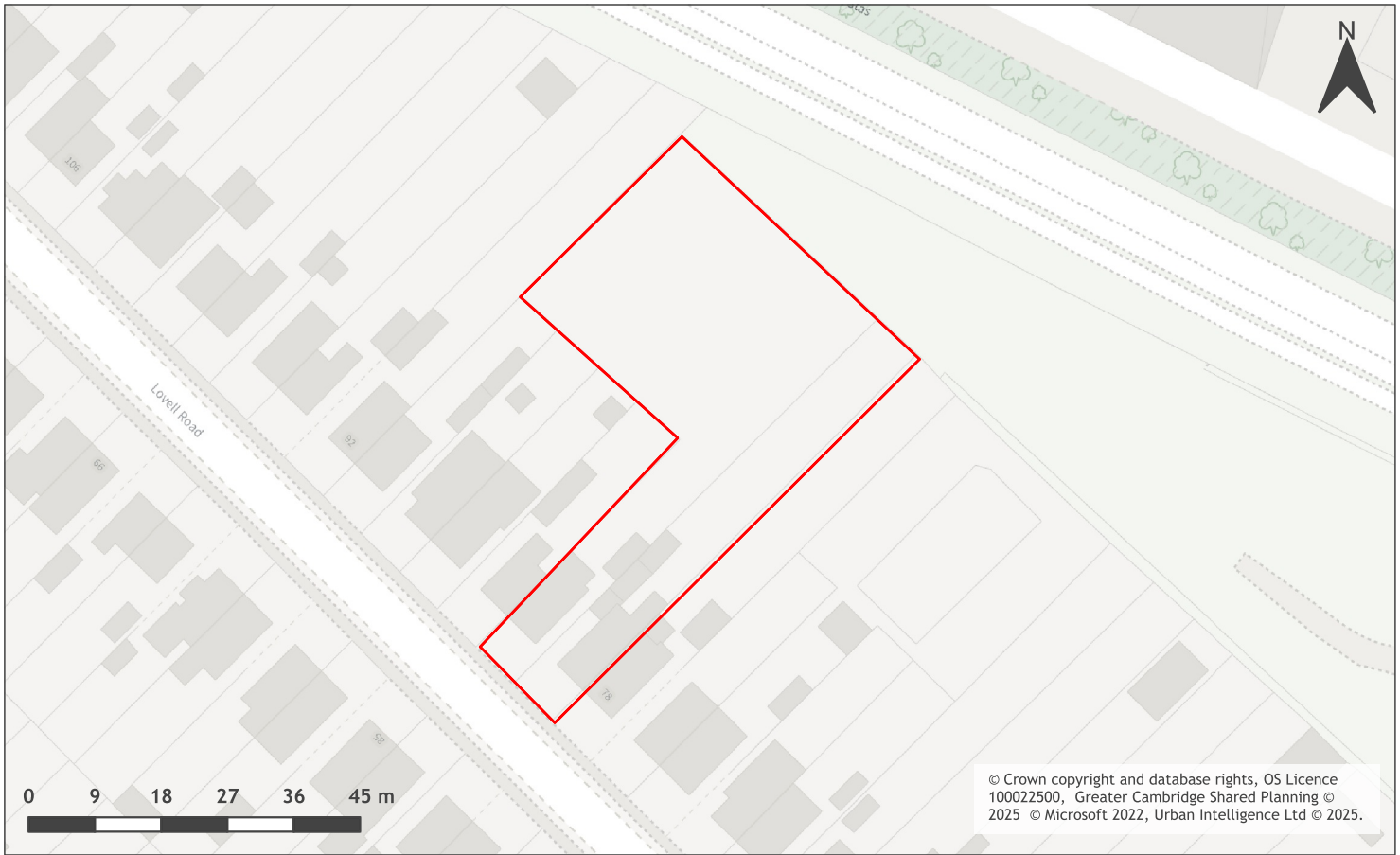


## Land to the rear of 80 - 90 Lovell Road, Cambridge assessment



A map of Land to the rear of 80 - 90 Lovell Road, Cambridge

Site information	-
Site ID	115062
HELAA Site ID	200755
Suitable Site Area (ha)	0.194224985448092
Ward/Parish	King's Hedges
Greenfield or Previously Developed?	Previously developed land
Category of site	Densification of existing urban areas
Category of settlement	Cambridge City
Current use(s)	Residential
Proposed development	Residential
Proposed employment floorspace (m2)	0
Proposed residential capacity	5- 9
Suitability	-
Adopted Development Plan Policies RAG 2025	Amber

Adopted Development Plan Policies Comment 2025	Development of the site has some potential policy constraints, but these could be overcome through the planning application process.
Flood Risk RAG Assessment 2025	Amber
Flood Risk Officer Comment 2025	Flood zone: Wholly in Flood Zone 1; Surface water flooding: 6% lies in 1 in 30 year event, 5% lies in a 1 in 100 year event and 13% lies in a 1 in 1000 year event
Flood Risk RAG Assessment 2023	-
Flood Risk Officer Comment 2023	-
Flood Risk RAG Assessment 2021	-
Flood Risk Officer Comment 2021	-
Landscape RAG Assessment 2025	Red
Landscape Comment 2025	Development of this site would be out of character when considering the surrounding character of the area due to the back-garden nature of the site. This would undermine the existing townscape character of this area, which cannot be mitigated.
Landscape RAG Assessment 2023	-
Landscape Comment 2023	-
Landscape RAG Assessment 2021	-
Landscape Comment 2021	-
Biodiversity and Geodiversity RAG Assessment 2025	Green
Biodiversity and Geodiversity Officer Comments 2025	A development of the size and scale described would not provide any specific ecological risks to statutory or non-statutory designated sites. However, this does not remove the likelihood of protected and priority species being impacted, nor that a development of the type described would likely be eligible for mandatory biodiversity net gain.
Biodiversity and Geodiversity Guideline Comments 2025	Development of the site is unlikely to have a detrimental impact on any designated site, or those with a regional or local protection.
Biodiversity and Geodiversity RAG Assessment 2023	-
Biodiversity and Geodiversity Officer Comments 2023	-
Biodiversity and Geodiversity Guideline Comments 2023	-
Biodiversity and Geodiversity RAG Assessment 2021	-

Biodiversity and Geodiversity Officer Comments 2021	-
Biodiversity and Geodiversity Guideline Comments 2021	-
Policy RAG Rating 2025	Green
Policy Officer Comment 2025	Site is not on protected open space designation. Any impact of the proposed development could be reasonably mitigated or compensated. The site is wholly outside an open space designation.
Policy RAG Rating 2023	-
Policy Officer Comment 2023	-
Policy RAG Rating 2021	-
Policy Officer Comments 2021	-
Historic Environment RAG Assessment 2025	Green
Historic Environment Comments 2025	Development of the site would have either a neutral or positive impact, but importantly not have a detrimental impact on any designated or non-designated heritage assets.
Historic Environment RAG Assessment 2023	-
Historic Environment Comments 2023	-
Historic Environment RAG Assessment 2021	-
Historic Environment Comments 2021	-
Archaeology RAG Assessment 2025	Green
Archaeology Officer Comment 2025	Significant archaeology is not anticipated in this area and archaeological investigation is not considered necessary.
Archaeology RAG Assessment 2023	-
Archaeology Officer Comment 2023	-
Archaeology RAG Assessment 2021	-
Archaeology Officer Comment 2021	-
Accessibility RAG Assessment 2025 - Automated	Green
Accessibility RAG Assessment 2025 - Officer Verified	-
Accessibility Comment 2025	Good accessibility to key local services, transport, and employment opportunities. Proposed development would not require delivery of accompanying key services

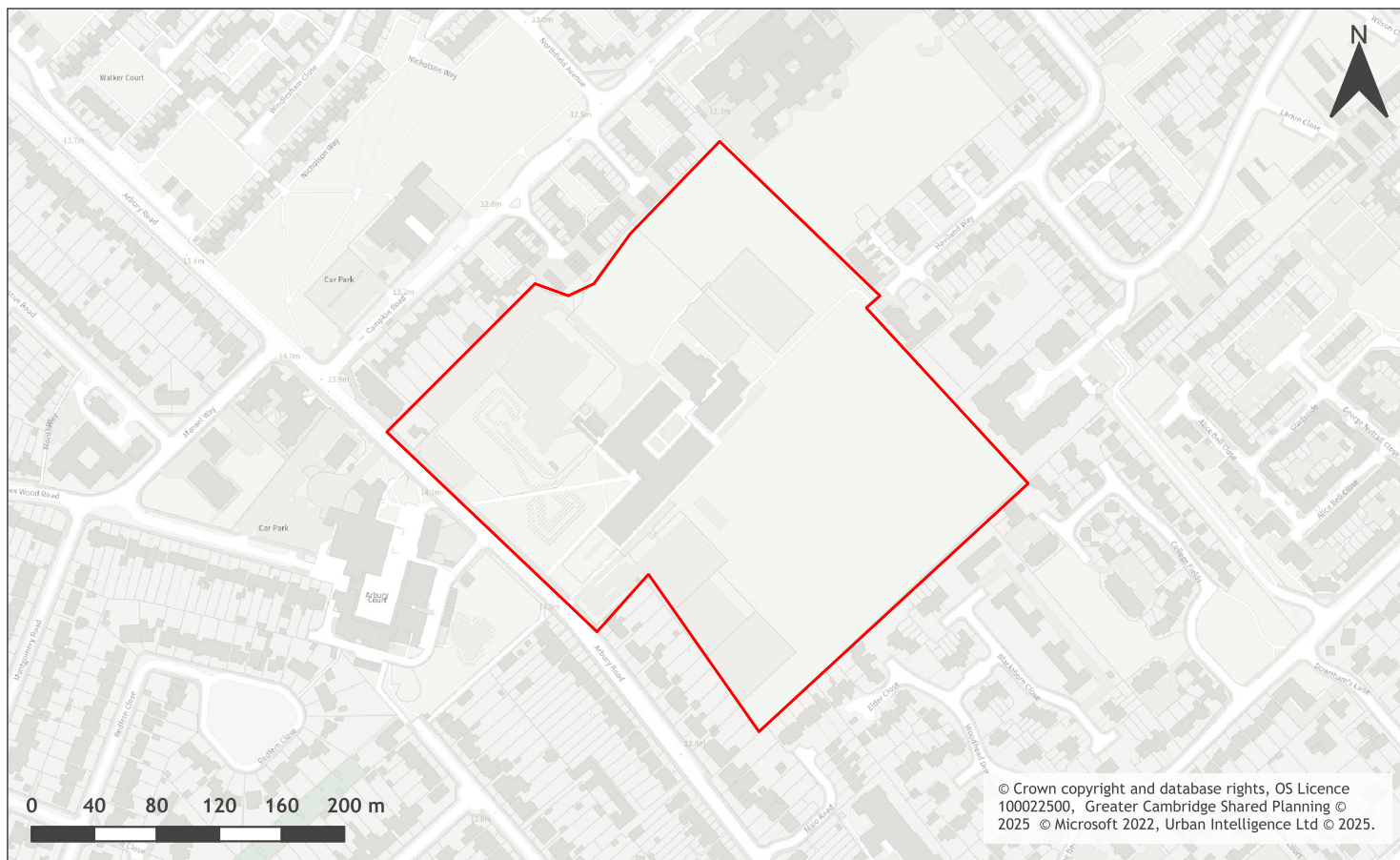
Site Access RAG Assessment 2025	Amber
Site Access Officer Comment 2025	The site has been scored as Amber. The site is acceptable in principle, subject to further detail and consultation at the planning application stage.
Site Access RAG Assessment 2023	-
Site Access Officer Comment 2023	-
Site Access RAG Assessment 2021	-
Site Access Officer Comment 2021	-
Transport and Roads RAG Assessment 2025	Green
Transport and Roads Guideline Comments 2025	This falls below the threshold for a Transport Assessment.
Transport and Roads RAG Assessment 2023	-
Transport and Roads Guideline Comments 2023	-
Transport and Roads RAG Assessment 2021	-
Transport and Roads Guideline Comments 2021	-
Noise, Vibration, Odour and Light Pollution RAG Assessment 2025	Amber
Noise, Vibration, Odour and Light Pollution Guideline Comments 2025	Cambridge Guided Busway traffic noise and various industrial / commercial / business premises noise on the Cambridge Science Park to the North are constraints. Such noise sources can have a significant adverse noise impact on health and quality of life / amenity both internally and externally. However, with the consideration of good acoustic design for example layout, orientation, mitigation / insulation early in the design process, noise can be mitigated and reduced to an acceptable level / effect.
Noise, Vibration, Odour and Light Pollution RAG Assessment 2023	-
Noise, Vibration, Odour and Light Pollution Guideline Comments 2023	-
Noise, Vibration, Odour and Light Pollution RAG Assessment 2021	-
Noise, Vibration, Odour and Light Pollution Guideline Comments 2021	-
AQMA RAG Assessment 2025	Green



Air Quality Officer Comment 2025	The site has been scored as Green. The site does not lie within an Air Quality Management Area (AQMA) and therefore will have minimal traffic impact on designated AQMAs.
AQMA RAG Assessment 2023	-
Air Quality Officer Comment 2023	-
AQMA RAG Assessment 2021	-
Air Quality Officer Comment 2021	-
Contaminated Land RAG Assessment 2025	Amber
Contaminated Land Officer Comments 2025	Brownfield site, contamination expected and planning conditions required
Contaminated Land RAG Assessment 2023	-
Contaminated Land Officer Comments 2023	-
Contaminated Land RAG Assessment 2021	-
Contaminated Land Officer Comments 2021	-
Overall Suitability Score	Red
Further constraints	-
Agricultural Land Classification Grade 1	0
Agricultural Land Classification Grade 2	54.5
Agricultural Land Classification Grade 3	0
Agricultural Land Classification Grade 4	0
Agricultural Land Classification Non Agricultural	0
Agricultural Land Classification Urban	45.5
Source Protection Zone	0
Highways England Zones	A14 CNB
Available	-
Is the site controlled by a developer or landowner who has expressed an intention to develop?	The site was submitted by the landowner and/or site promoter who has confirmed that the site is available for development in the timescales indicated.
Are there known legal or ownership impediments to development?	No
Is there planning permission to develop the site?	No, Application pending for erection of self-build dwelling. (25/00174/FUL)

When will the site be available for development?	0 to 5 years
Available RAG	Amber
Achievable	-
Is there a reasonable prospect that the site will be developed?	The land has been promoted by the landowner and or developer and is known to be available for development. The site has a low existing use value and development is likely to be economically viable
Achievable RAG	Green
Capacity	-
Prevailing Density (weighted) (dwellings per ha)	30
Residential capacity at prevailing density	6
Estimated employment space (m2)	0
Estimated start date	0-5 Years
Estimated annual build-out rate (pa)	40-75
Development completion timescales (years)	6-10 Years

## North Cambridge Academy 108 Arbury Road Cambridge assessment



A map of North Cambridge Academy 108 Arbury Road Cambridge

Site information	-
Site ID	115121
HELAA Site ID	200839
Suitable Site Area (ha)	7.67710317634866
Ward/Parish	King's Hedges
Greenfield or Previously Developed?	Previously developed land
Category of site	Densification of existing urban areas
Category of settlement	Cambridge City
Current use(s)	Car Park, Education / Community, Recreation
Proposed development	Mixed Use
Proposed employment floorspace (m2)	0
Proposed residential capacity	130-168
Suitability	-
Adopted Development Plan Policies RAG 2025	Amber

Adopted Development Plan Policies Comment 2025	Development of the site has some potential policy constraints, but these could be overcome through the planning application process.
Flood Risk RAG Assessment 2025	Amber
Flood Risk Officer Comment 2025	Flood zone: Wholly in Flood Zone 1; Surface water flooding: 17% lies in a 1 in 30 year event, 8% lies in a 1 in 100 year event and 17% lies in a 1 in 1000 year event
Flood Risk RAG Assessment 2023	-
Flood Risk Officer Comment 2023	-
Flood Risk RAG Assessment 2021	-
Flood Risk Officer Comment 2021	-
Landscape RAG Assessment 2025	Amber
Landscape Comment 2025	The northern half of the site is designated as Protected Open Space and is currently part of the wider open spaces around the school used for recreation and sport. There will be a principle object to building on this land. It may be suitable to place public open space elements within it. Loss of open space will be detrimental to the wider neighbourhoods. The remainder of the land is considered suitable for residential development. Building heights will need to be designed to ensure no harm is caused to neighbours through overlooking and overbearing. Tree planting will be required to keep in line with local Tree Strategy for canopy cover.
Landscape RAG Assessment 2023	-
Landscape Comment 2023	-
Landscape RAG Assessment 2021	-
Landscape Comment 2021	-
Biodiversity and Geodiversity RAG Assessment 2025	Green
Biodiversity and Geodiversity Officer Comments 2025	A development of the size and scale described would not provide any specific ecological risks to statutory or non-statutory designated sites. However, this does not remove the possibility of protected and priority species being impacted, nor that a development of the type described would likely be eligible for mandatory biodiversity net gain.
Biodiversity and Geodiversity Guideline Comments 2025	Development of the site would not have a detrimental impact on any designated site, or those with a regional or local protection.
Biodiversity and Geodiversity RAG Assessment 2023	-
Biodiversity and Geodiversity Officer Comments 2023	-

Biodiversity and Geodiversity Guideline Comments 2023	-
Biodiversity and Geodiversity RAG Assessment 2021	-
Biodiversity and Geodiversity Officer Comments 2021	-
Biodiversity and Geodiversity Guideline Comments 2021	-
Policy RAG Rating 2025	Red
Policy Officer Comment 2025	Within or partially within an Outdoor sports facility. Within or partially within Protected Open Space. Within 50m of an Amenity Green Space. Site includes protected open space designations. Development of the site would result in a loss of open space which could not be replaced locally.
Policy RAG Rating 2023	-
Policy Officer Comment 2023	-
Policy RAG Rating 2021	-
Policy Officer Comments 2021	-
Historic Environment RAG Assessment 2025	Green
Historic Environment Comments 2025	The closet heritage asset to the site is the Church of the Good Shepherd, which is situated 100m to the west. The church is well screened from the site by existing intervening development. Development of the site would have either a neutral or positive impact, but importantly not have a detrimental impact on any designated or non-designated heritage assets.
Historic Environment RAG Assessment 2023	-
Historic Environment Comments 2023	-
Historic Environment RAG Assessment 2021	-
Historic Environment Comments 2021	-
Archaeology RAG Assessment 2025	Amber
Archaeology Officer Comment 2025	There is extensive evidence for high status Roman settlement in the vicinity. Previous evaluation confirm that former school buildings will have truncated archaeology. However, there is high potential for survival within areas of open space. Archaeological investigations would be necessary in advance of development.
Archaeology RAG Assessment 2023	-
Archaeology Officer Comment 2023	-

Archaeology RAG Assessment 2021	-
Archaeology Officer Comment 2021	-
Accessibility RAG Assessment 2025 - Automated	Green
Accessibility RAG Assessment 2025 - Officer Verified	-
Accessibility Comment 2025	Adequate accessibility to key local services, transport, and employment opportunities. Proposed development would not require delivery of accompanying key services
Site Access RAG Assessment 2025	Amber
Site Access Officer Comment 2025	The site has been scored as Amber. The site is acceptable in principle, subject to further detail and consultation at the planning application stage.
Site Access RAG Assessment 2023	-
Site Access Officer Comment 2023	-
Site Access RAG Assessment 2021	-
Site Access Officer Comment 2021	-
Transport and Roads RAG Assessment 2025	Amber
Transport and Roads Guideline Comments 2025	<p>The development would need to provide mitigation to reduce the vehicle impact and encourage active travel and public transport use. Any potential impact on the functioning of trunk roads and/or local roads could be reasonably mitigated.</p> <p>A Transport Assessment and a Travel Plan will be required.</p>
Transport and Roads RAG Assessment 2023	-
Transport and Roads Guideline Comments 2023	-
Transport and Roads RAG Assessment 2021	-
Transport and Roads Guideline Comments 2021	-
Noise, Vibration, Odour and Light Pollution RAG Assessment 2025	Amber

Noise, Vibration, Odour and Light Pollution Guideline Comments 2025	Possible existing Grove Primary School noise source constraints. However low to medium risk and opportunities to improve existing adverse acoustic environment. Careful integration of proposed mixed uses with noise sensitive residential required to maximize good acoustic design and noise management and mitigation / insulation early in design process for example substantial noise insulation scheme etc. will be a challenge to integrate but achievable.
Noise, Vibration, Odour and Light Pollution RAG Assessment 2023	-
Noise, Vibration, Odour and Light Pollution Guideline Comments 2023	-
Noise, Vibration, Odour and Light Pollution RAG Assessment 2021	-
Noise, Vibration, Odour and Light Pollution Guideline Comments 2021	-
AQMA RAG Assessment 2025	Amber
Air Quality Officer Comment 2025	The site has been scored as Amber. The site does not lie within an Air Quality Management Area (AQMA). Given the location of the site, inherent/intrinsic designed-in air quality mitigation measures and conditions may be required to offset impacts on designated AQMAs.
AQMA RAG Assessment 2023	-
Air Quality Officer Comment 2023	-
AQMA RAG Assessment 2021	-
Air Quality Officer Comment 2021	-
Contaminated Land RAG Assessment 2025	Amber
Contaminated Land Officer Comments 2025	Brownfield site, minor contamination expected, conditions required
Contaminated Land RAG Assessment 2023	-
Contaminated Land Officer Comments 2023	-
Contaminated Land RAG Assessment 2021	-
Contaminated Land Officer Comments 2021	-
Overall Suitability Score	Amber
Further constraints	-
Agricultural Land Classification Grade 1	0

Agricultural Land Classification Grade 2	0
Agricultural Land Classification Grade 3	0
Agricultural Land Classification Grade 4	0
Agricultural Land Classification Non Agricultural	0
Agricultural Land Classification Urban	100
Source Protection Zone	0
Highways England Zones	Cambridge
Available	-
Is the site controlled by a developer or landowner who has expressed an intention to develop?	The site was submitted by the landowner and/or site promoter who has confirmed that the site is available for development in the timescales indicated.
Are there known legal or ownership impediments to development?	No
Is there planning permission to develop the site?	Yes, Planning permission granted for temporary single storey modular unit to provide two new general teaching spaces. (23/02893/FUL), Planning permission granted for new activity hall and front entrance to the school. (23/03671/FUL), Planning permission granted for installation of external sprinkler tank and pump set to existing sprinkler system. (25/01932/FUL)
When will the site be available for development?	0 to 5 years
Available RAG	Amber
Achievable	-
Is there a reasonable prospect that the site will be developed?	The land has been promoted by the landowner and or developer and is known to be available for development. The site has a low existing use value and development is likely to be economically viable
Achievable RAG	Green
Capacity	-
Prevailing Density (weighted) (dwellings per ha)	30
Residential capacity at prevailing density	161
Estimated employment space (m2)	0
Estimated start date	0-5 Years
Estimated annual build-out rate (pa)	40-75
Development completion timescales (years)	0-5 Years



## Hawthorn Community Centre, Haviland Way, Cambridge assessment



A map of Hawthorn Community Centre, Haviland Way, Cambridge

Site information	-
Site ID	115551
HELAA Site ID	40166
Suitable Site Area (ha)	0.430264381055227
Ward/Parish	King's Hedges
Greenfield or Previously Developed?	Previously Developed Land
Category of site	Densification of existing urban areas
Category of settlement	Cambridge City
Current use(s)	-
Proposed development	Residential
Proposed employment floorspace (m2)	0
Proposed residential capacity	15
Suitability	-
Adopted Development Plan Policies RAG 2025	Amber

Adopted Development Plan Policies Comment 2025	Development of the site has some potential policy constraints, but these could be overcome through the planning application process.
Flood Risk RAG Assessment 2025	Amber
Flood Risk Officer Comment 2025	Flood Zone: Wholly in Flood Zone 1. Surface Water Flooding: 8% lies in a 1 in 30 year event. 4% lies in a 1 in 100 year event. 29% lies in a 1 in 1000 year event
Flood Risk RAG Assessment 2023	-
Flood Risk Officer Comment 2023	-
Flood Risk RAG Assessment 2021	Amber
Flood Risk Officer Comment 2021	The site is within flood zone 2 (taking into account climate change) and/or is within an area at high, medium or low risk from surface water flooding.
Landscape RAG Assessment 2025	-
Landscape Comment 2025	-
Landscape RAG Assessment 2023	-
Landscape Comment 2023	-
Landscape RAG Assessment 2021	Green
Landscape Comment 2021	As proposed development of the site would be out of context with the low rise and low density surroundings. Development of the site could be achieved at a lower number and if the vegetated boundaries are protected and retained.
Biodiversity and Geodiversity RAG Assessment 2025	-
Biodiversity and Geodiversity Officer Comments 2025	-
Biodiversity and Geodiversity Guideline Comments 2025	-
Biodiversity and Geodiversity RAG Assessment 2023	-
Biodiversity and Geodiversity Officer Comments 2023	-
Biodiversity and Geodiversity Guideline Comments 2023	-
Biodiversity and Geodiversity RAG Assessment 2021	Green

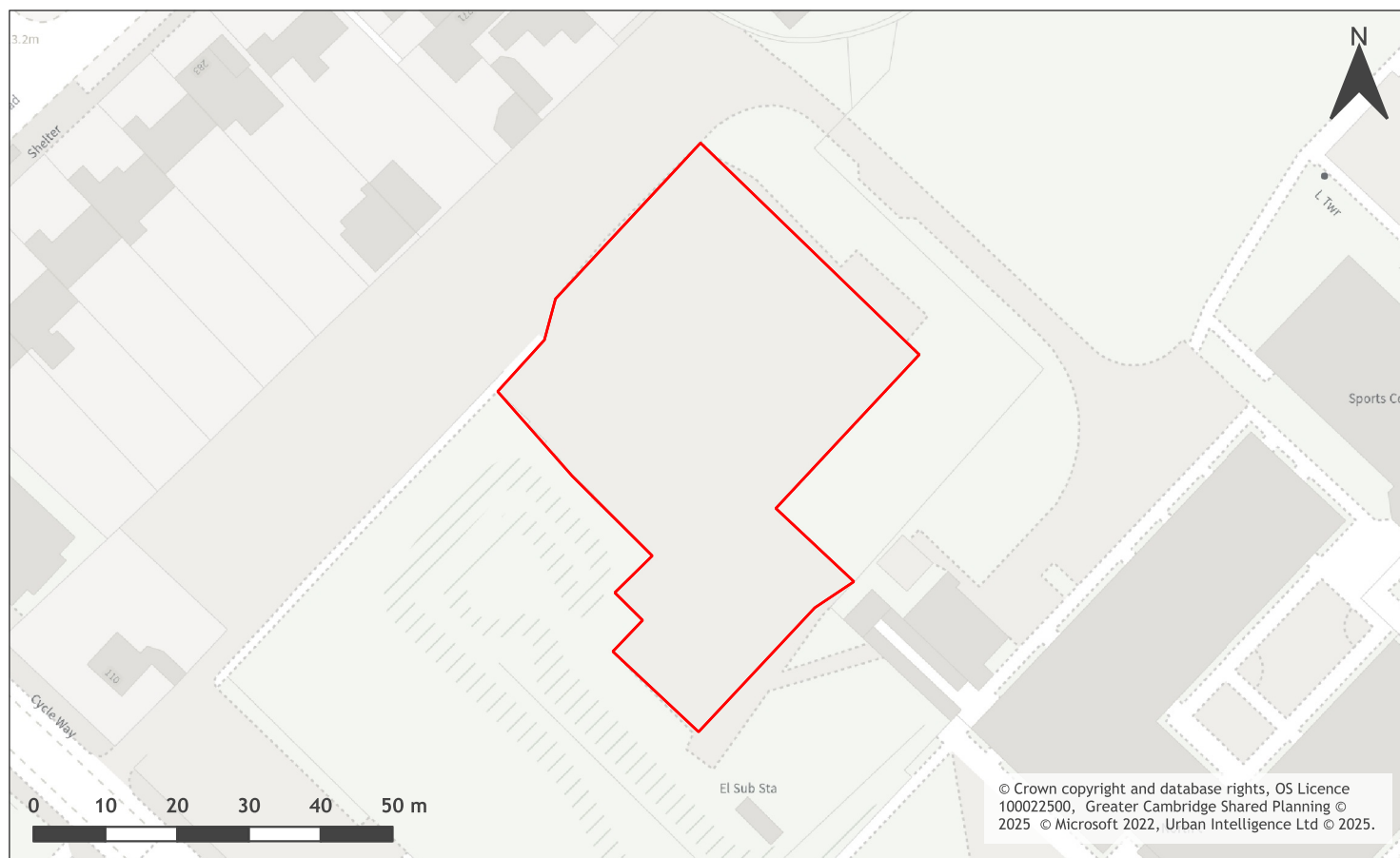
Biodiversity and Geodiversity Officer Comments 2021	Existing grounds have amenity grassland and mature trees providing locally important green space in the urban environment. Development should seek to retain connectivity and provide a measurable net gain in biodiversity.
Biodiversity and Geodiversity Guideline Comments 2021	Development of the site would not have a detrimental impact on any designated site, or those with a regional or local protection.
Policy RAG Rating 2025	-
Policy Officer Comment 2025	-
Policy RAG Rating 2023	-
Policy Officer Comment 2023	-
Policy RAG Rating 2021	Green
Policy Officer Comments 2021	Site is not on a protected open space designation, however there are some protected open space designations on periphery of the site. Development of the site may have a detrimental impact on the peripheral open space designation, but the impact could be reasonably mitigated or compensated.
Historic Environment RAG Assessment 2025	-
Historic Environment Comments 2025	-
Historic Environment RAG Assessment 2023	-
Historic Environment Comments 2023	-
Historic Environment RAG Assessment 2021	Green
Historic Environment Comments 2021	There are no known heritage assets in this area. Development of the site would have either a neutral or positive impact, but importantly not have a detrimental impact on any designated or non-designated heritage assets.
Archaeology RAG Assessment 2025	-
Archaeology Officer Comment 2025	-
Archaeology RAG Assessment 2023	-
Archaeology Officer Comment 2023	-
Archaeology RAG Assessment 2021	Green
Archaeology Officer Comment 2021	No significant archaeology is likely to survive in this area
Accessibility RAG Assessment 2025 - Automated	Green
Accessibility RAG Assessment 2025 - Officer Verified	-

Accessibility Comment 2025	Good accessibility to key local services, transport, and employment opportunities. Proposed development would not require delivery of accompanying key services
Site Access RAG Assessment 2025	-
Site Access Officer Comment 2025	-
Site Access RAG Assessment 2023	Red
Site Access Officer Comment 2023	The development boundary has been amended to reflect potential highways access. However this is over third party land and therefore the site does not have direct access to the adopted public highway that is within that landowners control. The previous assessment therefore remains unchanged.
Site Access RAG Assessment 2021	Red
Site Access Officer Comment 2021	The proposed site does not to have a direct link to the adopted public highway.
Transport and Roads RAG Assessment 2025	-
Transport and Roads Guideline Comments 2025	-
Transport and Roads RAG Assessment 2023	-
Transport and Roads Guideline Comments 2023	-
Transport and Roads RAG Assessment 2021	Amber
Transport and Roads Guideline Comments 2021	Any potential impact on the functioning of trunk roads and/or local roads could be reasonably mitigated.
Noise, Vibration, Odour and Light Pollution RAG Assessment 2025	-
Noise, Vibration, Odour and Light Pollution Guideline Comments 2025	-
Noise, Vibration, Odour and Light Pollution RAG Assessment 2023	-
Noise, Vibration, Odour and Light Pollution Guideline Comments 2023	-
Noise, Vibration, Odour and Light Pollution RAG Assessment 2021	Amber
Noise, Vibration, Odour and Light Pollution Guideline Comments 2021	The site is affected by noise from adjacent playing fields but development would be acceptable subject to detailed design considerations and mitigation.
AQMA RAG Assessment 2025	-
Air Quality Officer Comment 2025	-

AQMA RAG Assessment 2023	-
Air Quality Officer Comment 2023	-
AQMA RAG Assessment 2021	Amber
Air Quality Officer Comment 2021	Will require inherent / intrinsic designed in AQ mitigation.
Contaminated Land RAG Assessment 2025	-
Contaminated Land Officer Comments 2025	-
Contaminated Land RAG Assessment 2023	-
Contaminated Land Officer Comments 2023	-
Contaminated Land RAG Assessment 2021	Amber
Contaminated Land Officer Comments 2021	Brownfield site, contamination expected and planning conditions required
Overall Suitability Score	Red
Further constraints	-
Agricultural Land Classification Grade 1	0
Agricultural Land Classification Grade 2	0
Agricultural Land Classification Grade 3	0
Agricultural Land Classification Grade 4	0
Agricultural Land Classification Non Agricultural	0
Agricultural Land Classification Urban	100
Source Protection Zone	0
Highways England Zones	Cambridge
Available	-
Is the site controlled by a developer or landowner who has expressed an intention to develop?	The site was submitted by the landowner and/or site promoter who has confirmed that the site is available for development in the timescales indicated.
Are there known legal or ownership impediments to development?	No
Is there planning permission to develop the site?	No relevant recent planning history
When will the site be available for development?	0-5 Years

Available RAG	Green
Achievable	-
Is there a reasonable prospect that the site will be developed?	The land has been promoted by the landowner and or developer and is known to be available for development. The site has a low existing use value and residential development is likely to be economically viable at an appropriate density.
Achievable RAG	Green
Capacity	-
Prevailing Density (weighted) (dwellings per ha)	30
Residential capacity at prevailing density	13
Estimated employment space (m2)	0
Estimated start date	0-5 Years
Estimated annual build-out rate (pa)	40-75
Development completion timescales (years)	0-5 Years

## North Cambridge Academy, Arbury Road, Cambridge assessment



A map of North Cambridge Academy, Arbury Road, Cambridge

Site information	-
Site ID	115553
HELAA Site ID	40172
Suitable Site Area (ha)	0.238540489000092
Ward/Parish	King's Hedges
Greenfield or Previously Developed?	Previously Developed Land
Category of site	Densification of existing urban areas
Category of settlement	Cambridge City
Current use(s)	-
Proposed development	Mixed Use
Proposed employment floorspace (m2)	0
Proposed residential capacity	20
Suitability	-
Adopted Development Plan Policies RAG 2025	Amber

Adopted Development Plan Policies Comment 2025	Development of the site has some potential policy constraints, but these could be overcome through the planning application process.
Flood Risk RAG Assessment 2025	Amber
Flood Risk Officer Comment 2025	Flood Zone: Wholly in Flood Zone 1. Surface Water Flooding: 41% lies in a 1 in 30 year event. 15% lies in a 1 in 100 year event. 16% lies in a 1 in 1000 year event
Flood Risk RAG Assessment 2023	-
Flood Risk Officer Comment 2023	-
Flood Risk RAG Assessment 2021	Amber
Flood Risk Officer Comment 2021	The site is within flood zone 2 (taking into account climate change) and/or is within an area at high, medium or low risk from surface water flooding.
Landscape RAG Assessment 2025	-
Landscape Comment 2025	-
Landscape RAG Assessment 2023	Amber
Landscape Comment 2023	Additional information makes changes to the site boundary, related to site access. This boundary amendment does not change the RAG assessment because there are no additional mitigation measures proposed to address the original site assessment related to privacy.
Landscape RAG Assessment 2021	Amber
Landscape Comment 2021	The site is a part of North Cambridge Academy but was not a part of the recent redevelopment of the school. The site currently is developed with a college building and promoted for use as a flatted, residential development. Adequate buffer planting and trees should be a part of any scheme which allows the residents privacy from the activity of the school grounds.
Biodiversity and Geodiversity RAG Assessment 2025	-
Biodiversity and Geodiversity Officer Comments 2025	-
Biodiversity and Geodiversity Guideline Comments 2025	-
Biodiversity and Geodiversity RAG Assessment 2023	Green
Biodiversity and Geodiversity Officer Comments 2023	The amendment to the site boundary does not impact the original assessment of the site as it is primarily to address site access issues. Therefore there is no change to the site assessment scoring.



Biodiversity and Geodiversity Guideline Comments 2023	Development of the site would not have a detrimental impact on any designated site, or those with a regional or local protection.
Biodiversity and Geodiversity RAG Assessment 2021	Amber
Biodiversity and Geodiversity Officer Comments 2021	Any residential development above 100 units will require consultation with Natural England. Habitats most likely to be of relatively low ecological value (arable) although boundary hedgerows may be Habitats of Principal Importance/priority habitat and may be pockets of scrub/woodland/mosaic habitat in northern area. Potential for bat roosts in buildings in north of site (if suitable) and farmland bird populations.
Biodiversity and Geodiversity Guideline Comments 2021	Development of the site may have a detrimental impact on a designated site, or those with a regional or local protection but the impact could be reasonably mitigated or compensated.
Policy RAG Rating 2025	-
Policy Officer Comment 2025	-
Policy RAG Rating 2023	-
Policy Officer Comment 2023	-
Policy RAG Rating 2021	Green
Policy Officer Comments 2021	Site is not on protected open space designation. Any impact of the proposed development could be reasonably mitigated or compensated.
Historic Environment RAG Assessment 2025	-
Historic Environment Comments 2025	-
Historic Environment RAG Assessment 2023	Green
Historic Environment Comments 2023	The updated submission does not raise any additional conservation issues. Development of the site would have either a neutral or positive impact, but importantly not have a detrimental impact on any designated or non-designated heritage assets.
Historic Environment RAG Assessment 2021	Green
Historic Environment Comments 2021	Development of the site would not have a detrimental impact on any designated or non-designated heritage assets.
Archaeology RAG Assessment 2025	-
Archaeology Officer Comment 2025	-
Archaeology RAG Assessment 2023	Green
Archaeology Officer Comment 2023	Based on the new information provided, the assessment for the site remains unchanged as Green as it is unlikely that an significant archaeology is likely to survive in this area.
Archaeology RAG Assessment 2021	Green

Archaeology Officer Comment 2021	No significant archaeology is unlikely to survive in this area.
Accessibility RAG Assessment 2025 - Automated	Green
Accessibility RAG Assessment 2025 - Officer Verified	-
Accessibility Comment 2025	Good accessibility to key local services, transport, and employment opportunities. Proposed development would not require delivery of accompanying key services
Site Access RAG Assessment 2025	-
Site Access Officer Comment 2025	-
Site Access RAG Assessment 2023	Red
Site Access Officer Comment 2023	The development boundary has been amended to reflect potential highways access. However this is over third party land and therefore the site does not have direct access to the adopted public highway that is within that landowners control. The previous assessment therefore remains unchanged.
Site Access RAG Assessment 2021	Red
Site Access Officer Comment 2021	The proposed site does not to have a direct link to the adopted public highway.
Transport and Roads RAG Assessment 2025	-
Transport and Roads Guideline Comments 2025	-
Transport and Roads RAG Assessment 2023	Amber
Transport and Roads Guideline Comments 2023	Based on the additional information provided, there is no change to the assessment score as any potential impact on the functioning of trunk roads and/or local roads could be reasonably mitigated.
Transport and Roads RAG Assessment 2021	Amber
Transport and Roads Guideline Comments 2021	Any potential impact on the functioning of trunk roads and/or local roads could be reasonably mitigated.
Noise, Vibration, Odour and Light Pollution RAG Assessment 2025	-
Noise, Vibration, Odour and Light Pollution Guideline Comments 2025	-
Noise, Vibration, Odour and Light Pollution RAG Assessment 2023	-
Noise, Vibration, Odour and Light Pollution Guideline Comments 2023	-

Noise, Vibration, Odour and Light Pollution RAG Assessment 2021	Amber
Noise, Vibration, Odour and Light Pollution Guideline Comments 2021	Potential noise from North Cambridge Academy and associated sports centre (possible community uses) but suitably designed development may be acceptable with mitigation.
AQMA RAG Assessment 2025	-
Air Quality Officer Comment 2025	-
AQMA RAG Assessment 2023	Amber
Air Quality Officer Comment 2023	No further information provided related to air quality issues or mitigation. Therefore the assessment of the site remains unchanged since the original assessment as the site is within an AQMA and will require inherent/intrinsic mitigation measures.
AQMA RAG Assessment 2021	Amber
Air Quality Officer Comment 2021	Will require inherent / intrinsic designed in AQ mitigation.
Contaminated Land RAG Assessment 2025	-
Contaminated Land Officer Comments 2025	-
Contaminated Land RAG Assessment 2023	Amber
Contaminated Land Officer Comments 2023	No further information provided related to environmental health issues or mitigation. Therefore the assessment of the site remains unchanged since the original assessment as this is a brownfield site where contamination is expected and planning conditions will be required.
Contaminated Land RAG Assessment 2021	Amber
Contaminated Land Officer Comments 2021	Brownfield site, contamination expected, conditions required
Overall Suitability Score	Red
Further constraints	-
Agricultural Land Classification Grade 1	0
Agricultural Land Classification Grade 2	0
Agricultural Land Classification Grade 3	0
Agricultural Land Classification Grade 4	0
Agricultural Land Classification Non Agricultural	0
Agricultural Land Classification Urban	100
Source Protection Zone	0

Highways England Zones	Cambridge
Available	-
Is the site controlled by a developer or landowner who has expressed an intention to develop?	The site was submitted by the landowner and/or site promoter who has confirmed that the site is available for development in the timescales indicated.
Are there known legal or ownership impediments to development?	No
Is there planning permission to develop the site?	No relevant recent planning history
When will the site be available for development?	0-5 Years
Available RAG	Green
Achievable	-
Is there a reasonable prospect that the site will be developed?	The land has been promoted by the landowner and or developer and is known to be available for development. The site has a low existing use value and residential development is likely to be economically viable at an appropriate density.
Achievable RAG	Green
Capacity	-
Prevailing Density (weighted) (dwellings per ha)	30
Residential capacity at prevailing density	7
Estimated employment space (m2)	0
Estimated start date	0-5 Years
Estimated annual build-out rate (pa)	40-75
Development completion timescales (years)	0-5 Years

## 379 - 381 Milton Road (Policy 27 - M1) assessment



A map of 379 - 381 Milton Road (Policy 27 - M1)

Site information	-
Site ID	115554
HELAA Site ID	OS033
Suitable Site Area (ha)	2.41286842955511
Ward/Parish	King's Hedges
Greenfield or Previously Developed?	Previously Developed Land
Category of site	Densification of existing urban areas
Category of settlement	Cambridge City
Current use(s)	-
Proposed development	Mixed use
Proposed employment floorspace (m2)	2000
Proposed residential capacity	95
Suitability	-
Adopted Development Plan Policies RAG 2025	Amber

Adopted Development Plan Policies Comment 2025	Development of the site is compatible and consistent with Development Plan policies and allocation.
Flood Risk RAG Assessment 2025	Amber
Flood Risk Officer Comment 2025	Flood Zone: Wholly in Flood Zone 1. Surface Water Flooding: 5% lies in a 1 in 30 year event. 7% lies in a 1 in 100 year event. 34% lies in a 1 in 1000 year event
Flood Risk RAG Assessment 2023	-
Flood Risk Officer Comment 2023	-
Flood Risk RAG Assessment 2021	Amber
Flood Risk Officer Comment 2021	The site contains areas at high, or medium risk from surface water flooding and/or the site contains some land in Flood Zones 2 and/or 3 but there is sufficient land in Flood Zone 1 to accommodate at least 5 additional dwellings or an increase of 500 square metres of employment floorspace.
Landscape RAG Assessment 2025	-
Landscape Comment 2025	-
Landscape RAG Assessment 2023	-
Landscape Comment 2023	-
Landscape RAG Assessment 2021	Green
Landscape Comment 2021	The site is a roughly triangular shaped site tucked in just south of the Guided Busway with partial frontage to Milton Road. The site proposals for a mix of housing and employment pose no landscape impacts on this site. It is recommended that space it retained for buffer planting and for additional tree planting within the site.
Biodiversity and Geodiversity RAG Assessment 2025	-
Biodiversity and Geodiversity Officer Comments 2025	-
Biodiversity and Geodiversity Guideline Comments 2025	-
Biodiversity and Geodiversity RAG Assessment 2023	-
Biodiversity and Geodiversity Officer Comments 2023	-
Biodiversity and Geodiversity Guideline Comments 2023	-

Biodiversity and Geodiversity RAG Assessment 2021	Green
Biodiversity and Geodiversity Officer Comments 2021	Unlikely to impact on designated sites for nature conservation and consultation with Natural England unlikely to be required. Boundary habitats including trees, wooded margins and hedgerows may qualify as Habitats of Principal Importance/be of ecological value. Remainder of site is likely to be of low ecological value although buildings may support bats and nesting birds if suitable. Records of Birds of Conservation Concern and hedgehog nearby.
Biodiversity and Geodiversity Guideline Comments 2021	Development of the site would not have a detrimental impact on any designated site, or those with a regional or local protection.
Policy RAG Rating 2025	-
Policy Officer Comment 2025	-
Policy RAG Rating 2023	-
Policy Officer Comment 2023	-
Policy RAG Rating 2021	Green
Policy Officer Comments 2021	Site is not on protected open space designation. Any impact of the proposed development could be reasonably mitigated or compensated.
Historic Environment RAG Assessment 2025	-
Historic Environment Comments 2025	-
Historic Environment RAG Assessment 2023	-
Historic Environment Comments 2023	-
Historic Environment RAG Assessment 2021	Green
Historic Environment Comments 2021	Development of the site would have either a neutral or positive impact, but importantly not have a detrimental impact on any designated or non-designated heritage assets.
Archaeology RAG Assessment 2025	-
Archaeology Officer Comment 2025	-
Archaeology RAG Assessment 2023	-
Archaeology Officer Comment 2023	-
Archaeology RAG Assessment 2021	Amber
Archaeology Officer Comment 2021	Finds of prehistoric date recorded in the area
Accessibility RAG Assessment 2025 - Automated	Green

Accessibility RAG Assessment 2025 - Officer Verified	-
Accessibility Comment 2025	Good accessibility to key local services, transport, and employment opportunities. Proposed development would not require delivery of accompanying key services
Site Access RAG Assessment 2025	-
Site Access Officer Comment 2025	-
Site Access RAG Assessment 2023	-
Site Access Officer Comment 2023	-
Site Access RAG Assessment 2021	Amber
Site Access Officer Comment 2021	The proposed site is acceptable in principle subject to detailed design.
Transport and Roads RAG Assessment 2025	-
Transport and Roads Guideline Comments 2025	-
Transport and Roads RAG Assessment 2023	-
Transport and Roads Guideline Comments 2023	-
Transport and Roads RAG Assessment 2021	Amber
Transport and Roads Guideline Comments 2021	Must consider the context of existing planning permissions and Strategies/Policies within this area. Network is approaching capacity so critical that travel by non car mode and reduced car parking are included with contribution towards GCP/Strategic schemes will be required.
Noise, Vibration, Odour and Light Pollution RAG Assessment 2025	-
Noise, Vibration, Odour and Light Pollution Guideline Comments 2025	-
Noise, Vibration, Odour and Light Pollution RAG Assessment 2023	-
Noise, Vibration, Odour and Light Pollution Guideline Comments 2023	-
Noise, Vibration, Odour and Light Pollution RAG Assessment 2021	Amber
Noise, Vibration, Odour and Light Pollution Guideline Comments 2021	The site is affected by noise from the Cambridge Guided Busway, Traffic and Industrial Noise but is acceptable in principle subject to detailed design considerations and mitigation.



AQMA RAG Assessment 2025	-
Air Quality Officer Comment 2025	-
AQMA RAG Assessment 2023	-
Air Quality Officer Comment 2023	-
AQMA RAG Assessment 2021	Amber
Air Quality Officer Comment 2021	Site does not lie within an AQMA. Will require inherent / intrinsic designed in AQ mitigation eg EVCP - City
Contaminated Land RAG Assessment 2025	-
Contaminated Land Officer Comments 2025	-
Contaminated Land RAG Assessment 2023	-
Contaminated Land Officer Comments 2023	-
Contaminated Land RAG Assessment 2021	Amber
Contaminated Land Officer Comments 2021	Brownfield site, contamination expected, conditions required
Overall Suitability Score	Amber
Further constraints	-
Agricultural Land Classification Grade 1	0
Agricultural Land Classification Grade 2	33.27
Agricultural Land Classification Grade 3	0
Agricultural Land Classification Grade 4	0
Agricultural Land Classification Non Agricultural	0
Agricultural Land Classification Urban	66.73
Source Protection Zone	0
Highways England Zones	A14 CNB
Available	-
Is the site controlled by a developer or landowner who has expressed an intention to develop?	The site is an existing Local Plan Allocation and confirmation of its availability has been confirmed in the Greater Cambridge Housing Trajectory and Five year Housing Land Supply
Are there known legal or ownership impediments to development?	No

Is there planning permission to develop the site?	No relevant recent planning history
When will the site be available for development?	0-5 Years
Available RAG	Green
Achievable	-
Is there a reasonable prospect that the site will be developed?	Land is known to be available, evidenced through the published housing trajectory. The site has a low existing use value and development is likely to be economically viable at an appropriate density.
Achievable RAG	Green
Capacity	-
Prevailing Density (weighted) (dwellings per ha)	30
Residential capacity at prevailing density	58
Estimated employment space (m2)	2000
Estimated start date	0-5 Years
Estimated annual build-out rate (pa)	40-75
Development completion timescales (years)	0-5 Years