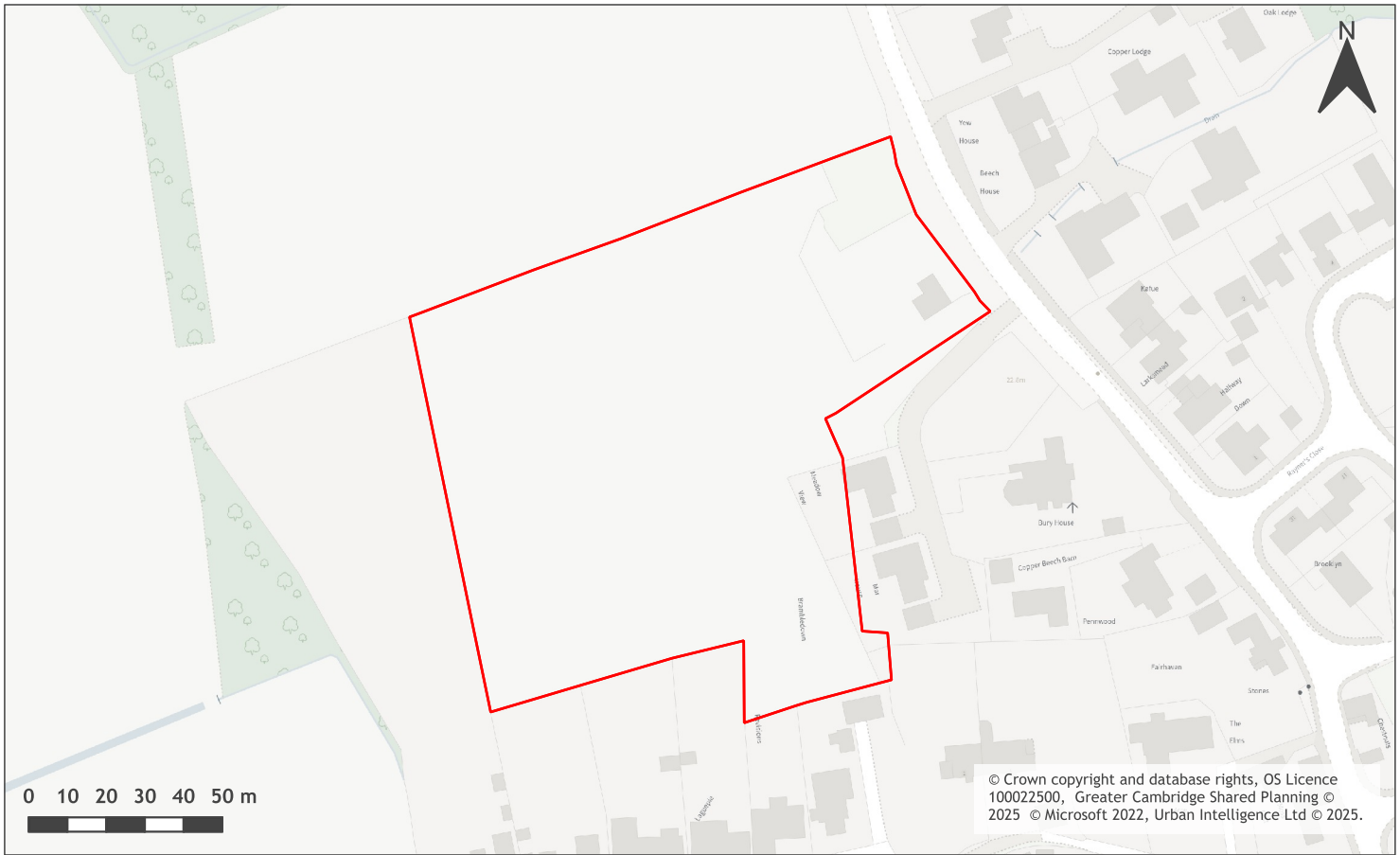


Site Access RAG Assessment 2025	-
Site Access Officer Comment 2025	-
Site Access RAG Assessment 2023	-
Site Access Officer Comment 2023	-
Site Access RAG Assessment 2021	Red
Site Access Officer Comment 2021	The proposed site does not to have a direct link to the adopted public highway.
Transport and Roads RAG Assessment 2025	-
Transport and Roads Guideline Comments 2025	-
Transport and Roads RAG Assessment 2023	-
Transport and Roads Guideline Comments 2023	-
Transport and Roads RAG Assessment 2021	Green
Transport and Roads Guideline Comments 2021	Development of the site will not have a detrimental impact on the functioning of trunk roads and/or local roads.
Noise, Vibration, Odour and Light Pollution RAG Assessment 2025	-
Noise, Vibration, Odour and Light Pollution Guideline Comments 2025	-
Noise, Vibration, Odour and Light Pollution RAG Assessment 2023	-
Noise, Vibration, Odour and Light Pollution Guideline Comments 2023	-
Noise, Vibration, Odour and Light Pollution RAG Assessment 2021	Green
Noise, Vibration, Odour and Light Pollution Guideline Comments 2021	The site is capable of being developed to provide healthy internal and external environments in regard to noise / vibration/ odour/ Light Pollution after careful site layout, design and mitigation
AQMA RAG Assessment 2025	-
Air Quality Officer Comment 2025	-
AQMA RAG Assessment 2023	-
Air Quality Officer Comment 2023	-

AQMA RAG Assessment 2021	Green
Air Quality Officer Comment 2021	Site does not lie within an AQMA. Minimal traffic impact on AQMA.
Contaminated Land RAG Assessment 2025	-
Contaminated Land Officer Comments 2025	-
Contaminated Land RAG Assessment 2023	-
Contaminated Land Officer Comments 2023	-
Contaminated Land RAG Assessment 2021	Green
Contaminated Land Officer Comments 2021	No prior history of development.
Overall Suitability Score	Red
Further constraints	-
Agricultural Land Classification Grade 1	0
Agricultural Land Classification Grade 2	100
Agricultural Land Classification Grade 3	0
Agricultural Land Classification Grade 4	0
Agricultural Land Classification Non Agricultural	0
Agricultural Land Classification Urban	0
Source Protection Zone	0
Highways England Zones	South West
Available	-
Is the site controlled by a developer or landowner who has expressed an intention to develop?	The site was submitted by the landowner and/or site promoter who has confirmed that the site is available for development in the timescales indicated.
Are there known legal or ownership impediments to development?	No
Is there planning permission to develop the site?	No relevant recent planning history
When will the site be available for development?	0-5 Years
Available RAG	Green
Achievable	-

Is there a reasonable prospect that the site will be developed?	The land has been promoted by the landowner and or developer and is known to be available for development. The site has a low existing use value and residential development is likely to be economically viable at an appropriate density.
Achievable RAG	Green
Capacity	-
Prevailing Density (weighted) (dwellings per ha)	30
Residential capacity at prevailing density	6
Estimated employment space (m2)	0
Estimated start date	0-5 Years
Estimated annual build-out rate (pa)	40-75
Development completion timescales (years)	0-5 Years

Land off Long Lane, Fowlmere assessment



A map of Land off Long Lane, Fowlmere

Site information	-
Site ID	115842
HELAA Site ID	40327
Suitable Site Area (ha)	1.37694400385516
Ward/Parish	Foxton
Greenfield or Previously Developed?	Greenfield
Category of site	Dispersal: Villages
Category of settlement	Within or adjacent to Group Village
Current use(s)	-
Proposed development	Residential
Proposed employment floorspace (m2)	0
Proposed residential capacity	17
Suitability	-
Adopted Development Plan Policies RAG 2025	Amber

Adopted Development Plan Policies Comment 2025	Development of the site has some potential policy constraints, but these could be overcome through the planning application process.
Flood Risk RAG Assessment 2025	Amber
Flood Risk Officer Comment 2025	Flood Zone: Wholly in Flood Zone 1. Surface Water Flooding: 2% lies in a 1 in 1000 year event
Flood Risk RAG Assessment 2023	-
Flood Risk Officer Comment 2023	-
Flood Risk RAG Assessment 2021	Green
Flood Risk Officer Comment 2021	The site is at low risk of flooding (within flood zone 1) and no risk from surface water flooding
Landscape RAG Assessment 2025	-
Landscape Comment 2025	-
Landscape RAG Assessment 2023	-
Landscape Comment 2023	-
Landscape RAG Assessment 2021	Amber
Landscape Comment 2021	The site is located to the north west of the village, outside and abutting the Development Framework boundary. To the north and west the site adjoins small green fields and the east and south are residential properties. Wide views are negligible and local views are open upon the northern boundary due to lack of vegetation. To mitigate any potential harm landscape measures are required inclusive of the following: existing boundary planting to be managed, buffer planting to be included upon the northern and western boundary, the form of development to reflect the existing settlement pattern and to have a rural approach.
Biodiversity and Geodiversity RAG Assessment 2025	-
Biodiversity and Geodiversity Officer Comments 2025	-
Biodiversity and Geodiversity Guideline Comments 2025	-
Biodiversity and Geodiversity RAG Assessment 2023	-
Biodiversity and Geodiversity Officer Comments 2023	-
Biodiversity and Geodiversity Guideline Comments 2023	-

Biodiversity and Geodiversity RAG Assessment 2021	Amber
Biodiversity and Geodiversity Officer Comments 2021	All new housing developments will require assessment of increased visitor pressure on nearby SSSI. Any residential development above 50 outside of current urban area will require consultation with Natural England. Hedges on site may qualify as Habitats of Principal Importance/be of high ecological value. Botanical diversity of grassland will need to be assessed. May be protected or notable species associated with boundary and grassland habitats.
Biodiversity and Geodiversity Guideline Comments 2021	Development of the site may have a detrimental impact on a designated site, or those with a regional or local protection but the impact could be reasonably mitigated or compensated.
Policy RAG Rating 2025	-
Policy Officer Comment 2025	-
Policy RAG Rating 2023	-
Policy Officer Comment 2023	-
Policy RAG Rating 2021	Green
Policy Officer Comments 2021	Site is not on protected open space designation. Any impact of the proposed development could be reasonably mitigated or compensated.
Historic Environment RAG Assessment 2025	-
Historic Environment Comments 2025	-
Historic Environment RAG Assessment 2023	-
Historic Environment Comments 2023	-
Historic Environment RAG Assessment 2021	Green
Historic Environment Comments 2021	Development of the site would have either a neutral or positive impact, but importantly not have a detrimental impact on any designated or non-designated heritage assets.
Archaeology RAG Assessment 2025	-
Archaeology Officer Comment 2025	-
Archaeology RAG Assessment 2023	-
Archaeology Officer Comment 2023	-
Archaeology RAG Assessment 2021	Amber
Archaeology Officer Comment 2021	Located on the north edge of the historic village
Accessibility RAG Assessment 2025 - Automated	Amber

Accessibility RAG Assessment 2025 - Officer Verified	-
Accessibility Comment 2025	Adequate accessibility to key local services, transport, and employment opportunities.
Site Access RAG Assessment 2025	-
Site Access Officer Comment 2025	-
Site Access RAG Assessment 2023	-
Site Access Officer Comment 2023	-
Site Access RAG Assessment 2021	Amber
Site Access Officer Comment 2021	The proposed site is acceptable in principle subject to detailed design.
Transport and Roads RAG Assessment 2025	-
Transport and Roads Guideline Comments 2025	-
Transport and Roads RAG Assessment 2023	-
Transport and Roads Guideline Comments 2023	-
Transport and Roads RAG Assessment 2021	Amber
Transport and Roads Guideline Comments 2021	Any potential impact on the functioning of trunk roads and/or local roads could be reasonably mitigated.
Noise, Vibration, Odour and Light Pollution RAG Assessment 2025	-
Noise, Vibration, Odour and Light Pollution Guideline Comments 2025	-
Noise, Vibration, Odour and Light Pollution RAG Assessment 2023	-
Noise, Vibration, Odour and Light Pollution Guideline Comments 2023	-
Noise, Vibration, Odour and Light Pollution RAG Assessment 2021	Amber
Noise, Vibration, Odour and Light Pollution Guideline Comments 2021	The site is capable of being developed to provide healthy internal and external environments in regard to noise / vibration/ odour/ Light Pollution after careful site layout, design and mitigation.
AQMA RAG Assessment 2025	-
Air Quality Officer Comment 2025	-

AQMA RAG Assessment 2023	-
Air Quality Officer Comment 2023	-
AQMA RAG Assessment 2021	Green
Air Quality Officer Comment 2021	Site does not lie within an AQMA. Minimal traffic impact on AQMA.
Contaminated Land RAG Assessment 2025	-
Contaminated Land Officer Comments 2025	-
Contaminated Land RAG Assessment 2023	-
Contaminated Land Officer Comments 2023	-
Contaminated Land RAG Assessment 2021	Amber
Contaminated Land Officer Comments 2021	Potential for historic contamination, conditions required.
Overall Suitability Score	Amber
Further constraints	-
Agricultural Land Classification Grade 1	0
Agricultural Land Classification Grade 2	100
Agricultural Land Classification Grade 3	0
Agricultural Land Classification Grade 4	0
Agricultural Land Classification Non Agricultural	0
Agricultural Land Classification Urban	0
Source Protection Zone	0
Highways England Zones	South West
Available	-
Is the site controlled by a developer or landowner who has expressed an intention to develop?	The site was submitted by the landowner and/or site promoter who has confirmed that the site is available for development in the timescales indicated.
Are there known legal or ownership impediments to development?	No
Is there planning permission to develop the site?	No relevant recent planning history
When will the site be available for development?	0-5 Years

Available RAG	Green
Achievable	-
Is there a reasonable prospect that the site will be developed?	The land has been promoted by the landowner and or developer and is known to be available for development. The site has a low existing use value and residential development is likely to be economically viable at an appropriate density.
Achievable RAG	Green
Capacity	-
Prevailing Density (weighted) (dwellings per ha)	30
Residential capacity at prevailing density	37
Estimated employment space (m2)	0
Estimated start date	0-5 Years
Estimated annual build-out rate (pa)	40-75
Development completion timescales (years)	0-5 Years

Land at Rectory Lane, Fowlmere assessment



A map of Land at Rectory Lane, Fowlmere

Site information	-
Site ID	115843
HELAA Site ID	40353
Suitable Site Area (ha)	0.982940595851382
Ward/Parish	Foxton
Greenfield or Previously Developed?	Greenfield
Category of site	Dispersal: Villages
Category of settlement	Within or adjacent to Group Village
Current use(s)	-
Proposed development	Residential
Proposed employment floorspace (m2)	0
Proposed residential capacity	30
Suitability	-
Adopted Development Plan Policies RAG 2025	Amber

Adopted Development Plan Policies Comment 2025	Development of the site has some potential policy constraints, but these could be overcome through the planning application process.
Flood Risk RAG Assessment 2025	Amber
Flood Risk Officer Comment 2025	Flood Zone: Partly in Flood Zone 2 (6%). Partly in Flood Zone 3 (27%).. Surface Water Flooding: 2% lies in a 1 in 100 year event. 10% lies in a 1 in 1000 year event
Flood Risk RAG Assessment 2023	-
Flood Risk Officer Comment 2023	-
Flood Risk RAG Assessment 2021	Amber
Flood Risk Officer Comment 2021	The site is within flood zones 3a or 3b.
Landscape RAG Assessment 2025	-
Landscape Comment 2025	-
Landscape RAG Assessment 2023	-
Landscape Comment 2023	-
Landscape RAG Assessment 2021	Amber
Landscape Comment 2021	Development would be an infill to the existing framework and have a neutral impact to the settlement character. However, unit numbers would need to be reduced in order to ensure a contextual village development. Typical landscape enhancement works would include the following: existing trees and hedgerows to be protected, managed and gaps infilled, village open space to be encouraged and development to be a rural approach.
Biodiversity and Geodiversity RAG Assessment 2025	-
Biodiversity and Geodiversity Officer Comments 2025	-
Biodiversity and Geodiversity Guideline Comments 2025	-
Biodiversity and Geodiversity RAG Assessment 2023	-
Biodiversity and Geodiversity Officer Comments 2023	-
Biodiversity and Geodiversity Guideline Comments 2023	-
Biodiversity and Geodiversity RAG Assessment 2021	Amber

Biodiversity and Geodiversity Officer Comments 2021	All new housing developments will require assessment of increased visitor pressure on nearby SSSI, and any residential development above 50 outside of current urban area will require consultation with Natural England. There is a watercourse/ditch adjacent to the eastern boundary that may require surveys and possible mitigation. There are no other apparent priority habitats within the site; however, there are grasslands, hedges, and wooded boundaries on site that are likely to have ecological value. Applications may find provision of a 10% net gain in biodiversity difficult within their red line boundaries and may need to find offsite compensation to comply with up-coming National legislation and developing local policies.
Biodiversity and Geodiversity Guideline Comments 2021	Development of the site may have a detrimental impact on a designated site, or those with a regional or local protection but the impact could be reasonably mitigated or compensated.
Policy RAG Rating 2025	-
Policy Officer Comment 2025	-
Policy RAG Rating 2023	-
Policy Officer Comment 2023	-
Policy RAG Rating 2021	Green
Policy Officer Comments 2021	Site is not on protected open space designation. Any impact of the proposed development could be reasonably mitigated or compensated.
Historic Environment RAG Assessment 2025	-
Historic Environment Comments 2025	-
Historic Environment RAG Assessment 2023	-
Historic Environment Comments 2023	-
Historic Environment RAG Assessment 2021	Amber
Historic Environment Comments 2021	This site is within the boundary of the conservation area as it provides a rural buffer to the character of Rectory Lane. A larger development may be possible to the north east of the site but the south western section of the site is too sensitive for major development. Any improvements to the access off Rectory Lane has the potential to harm the character of the lane.
Archaeology RAG Assessment 2025	-
Archaeology Officer Comment 2025	-
Archaeology RAG Assessment 2023	-
Archaeology Officer Comment 2023	-
Archaeology RAG Assessment 2021	Amber
Archaeology Officer Comment 2021	Located in the historic village core adjacent to the site of a medieval moat.

Accessibility RAG Assessment 2025 - Automated	Amber
Accessibility RAG Assessment 2025 - Officer Verified	-
Accessibility Comment 2025	Adequate accessibility to key local services, transport, and employment opportunities.
Site Access RAG Assessment 2025	-
Site Access Officer Comment 2025	-
Site Access RAG Assessment 2023	-
Site Access Officer Comment 2023	-
Site Access RAG Assessment 2021	Red
Site Access Officer Comment 2021	The proposed development is lacking in pedestrian connectivity and improvements will be required to make the development acceptable to the Local Highway Authority.
Transport and Roads RAG Assessment 2025	-
Transport and Roads Guideline Comments 2025	-
Transport and Roads RAG Assessment 2023	-
Transport and Roads Guideline Comments 2023	-
Transport and Roads RAG Assessment 2021	Amber
Transport and Roads Guideline Comments 2021	Any potential impact on the functioning of trunk roads and/or local roads could be reasonably mitigated.
Noise, Vibration, Odour and Light Pollution RAG Assessment 2025	-
Noise, Vibration, Odour and Light Pollution Guideline Comments 2025	-
Noise, Vibration, Odour and Light Pollution RAG Assessment 2023	-
Noise, Vibration, Odour and Light Pollution Guideline Comments 2023	-
Noise, Vibration, Odour and Light Pollution RAG Assessment 2021	Amber
Noise, Vibration, Odour and Light Pollution Guideline Comments 2021	The proposed site will be affected by road traffic noise from nearby main roads and nearby industrial /commercial activities but is acceptable in principle, subject to appropriate detailed design considerations and mitigation.

AQMA RAG Assessment 2025	-
Air Quality Officer Comment 2025	-
AQMA RAG Assessment 2023	-
Air Quality Officer Comment 2023	-
AQMA RAG Assessment 2021	Green
Air Quality Officer Comment 2021	Site does not lie within an AQMA. Minimal traffic impact on AQMA.
Contaminated Land RAG Assessment 2025	-
Contaminated Land Officer Comments 2025	-
Contaminated Land RAG Assessment 2023	-
Contaminated Land Officer Comments 2023	-
Contaminated Land RAG Assessment 2021	Amber
Contaminated Land Officer Comments 2021	Previous agricultural land use. Potential for historic contamination, conditions required.
Overall Suitability Score	Red
Further constraints	-
Agricultural Land Classification Grade 1	0
Agricultural Land Classification Grade 2	100
Agricultural Land Classification Grade 3	0
Agricultural Land Classification Grade 4	0
Agricultural Land Classification Non Agricultural	0
Agricultural Land Classification Urban	0
Source Protection Zone	0
Highways England Zones	South West
Available	-
Is the site controlled by a developer or landowner who has expressed an intention to develop?	The site was submitted by the landowner and/or site promoter who has confirmed that the site is available for development in the timescales indicated.
Are there known legal or ownership impediments to development?	No

Is there planning permission to develop the site?	No relevant recent planning history
When will the site be available for development?	0-5 Years
Available RAG	Green
Achievable	-
Is there a reasonable prospect that the site will be developed?	The land has been promoted by the landowner and or developer and is known to be available for development. The site has a low existing use value and residential development is likely to be economically viable at an appropriate density.
Achievable RAG	Green
Capacity	-
Prevailing Density (weighted) (dwellings per ha)	30
Residential capacity at prevailing density	28
Estimated employment space (m2)	0
Estimated start date	0-5 Years
Estimated annual build-out rate (pa)	40-75
Development completion timescales (years)	0-5 Years

0 20 40 60 80 100 m

© Crown copyright and database rights, OS Licence 100022500, Greater Cambridge Shared Planning © 2025 © Microsoft 2022, Urban Intelligence Ltd © 2025.

Site information	-
Site ID	115844
HELAA Site ID	40023
Suitable Site Area (ha)	2.13822786784654
Ward/Parish	Foxton
Greenfield or Previously Developed?	Previously Developed Land
Category of site	Dispersal: Villages
Category of settlement	Within or adjacent to Group Village
Current use(s)	-
Proposed development	Mixed Use
Proposed employment floorspace (m2)	204
Proposed residential capacity	45
Suitability	-
Adopted Development Plan Policies RAG 2025	Amber

Adopted Development Plan Policies Comment 2025	Development of the site has some potential policy constraints, but these could be overcome through the planning application process.
Flood Risk RAG Assessment 2025	Amber
Flood Risk Officer Comment 2025	Flood Zone: Partly in Flood Zone 2 (26%). Partly in Flood Zone 3 (42%).. Surface Water Flooding: 2% lies in a 1 in 30 year event. 2% lies in a 1 in 100 year event. 22% lies in a 1 in 1000 year event
Flood Risk RAG Assessment 2023	-
Flood Risk Officer Comment 2023	-
Flood Risk RAG Assessment 2021	Amber
Flood Risk Officer Comment 2021	The site is within flood zones 3a or 3b.
Landscape RAG Assessment 2025	-
Landscape Comment 2025	-
Landscape RAG Assessment 2023	-
Landscape Comment 2023	-
Landscape RAG Assessment 2021	Amber
Landscape Comment 2021	The site is a brownfield light/agro industrial site, views into and out of the site are limited due to surrounding vegetation primarily. Development would require buffering and should include landscape mitigation along all boundaries and at an appropriate width to filter views from the surrounding landscape or from neighbours.
Biodiversity and Geodiversity RAG Assessment 2025	-
Biodiversity and Geodiversity Officer Comments 2025	-
Biodiversity and Geodiversity Guideline Comments 2025	-
Biodiversity and Geodiversity RAG Assessment 2023	-
Biodiversity and Geodiversity Officer Comments 2023	-
Biodiversity and Geodiversity Guideline Comments 2023	-
Biodiversity and Geodiversity RAG Assessment 2021	Amber

Biodiversity and Geodiversity Officer Comments 2021	All new housing developments will require assessment of increased visitor pressure on nearby SSSI, and any residential development above 50 outside of current urban area will require consultation with Natural England. There are no apparent priority habitats within the site; however, there are buildings, grasslands, woodland areas, hedges, and wooded boundaries on site that are likely to have ecological value. Applications may find provision of a 10% net gain in biodiversity difficult within their redline boundaries and may need to find off-site compensation to comply with up-coming National legislation and developing local policies.
Biodiversity and Geodiversity Guideline Comments 2021	Development of the site may have a detrimental impact on a designated site, or those with a regional or local protection but the impact could be reasonably mitigated or compensated.
Policy RAG Rating 2025	-
Policy Officer Comment 2025	-
Policy RAG Rating 2023	-
Policy Officer Comment 2023	-
Policy RAG Rating 2021	Green
Policy Officer Comments 2021	Site is not on protected open space designation. Any impact of the proposed development could be reasonably mitigated or compensated.
Historic Environment RAG Assessment 2025	-
Historic Environment Comments 2025	-
Historic Environment RAG Assessment 2023	-
Historic Environment Comments 2023	-
Historic Environment RAG Assessment 2021	Green
Historic Environment Comments 2021	Development of the site would not have a detrimental impact on any designated or non-designated heritage assets.
Archaeology RAG Assessment 2025	-
Archaeology Officer Comment 2025	-
Archaeology RAG Assessment 2023	-
Archaeology Officer Comment 2023	-
Archaeology RAG Assessment 2021	Amber
Archaeology Officer Comment 2021	Located on the northern edge of the historic village core. Previous land use may have impacted archaeology on site.
Accessibility RAG Assessment 2025 - Automated	Amber

Accessibility RAG Assessment 2025 - Officer Verified	-
Accessibility Comment 2025	Adequate accessibility to key local services, transport, and employment opportunities.
Site Access RAG Assessment 2025	-
Site Access Officer Comment 2025	-
Site Access RAG Assessment 2023	-
Site Access Officer Comment 2023	-
Site Access RAG Assessment 2021	Red
Site Access Officer Comment 2021	The proposed site does not to have a direct link to the adopted public highway.
Transport and Roads RAG Assessment 2025	-
Transport and Roads Guideline Comments 2025	-
Transport and Roads RAG Assessment 2023	-
Transport and Roads Guideline Comments 2023	-
Transport and Roads RAG Assessment 2021	Amber
Transport and Roads Guideline Comments 2021	Any potential impact on the functioning of trunk roads and/or local roads could be reasonably mitigated.
Noise, Vibration, Odour and Light Pollution RAG Assessment 2025	-
Noise, Vibration, Odour and Light Pollution Guideline Comments 2025	-
Noise, Vibration, Odour and Light Pollution RAG Assessment 2023	-
Noise, Vibration, Odour and Light Pollution Guideline Comments 2023	-
Noise, Vibration, Odour and Light Pollution RAG Assessment 2021	Amber
Noise, Vibration, Odour and Light Pollution Guideline Comments 2021	The site is capable of being developed to provide healthy internal and external environments in regard to noise / vibration/ odour/ Light Pollution after careful site layout, design and mitigation
AQMA RAG Assessment 2025	-
Air Quality Officer Comment 2025	-

AQMA RAG Assessment 2023	-
Air Quality Officer Comment 2023	-
AQMA RAG Assessment 2021	Green
Air Quality Officer Comment 2021	Site does not lie within an AQMA. Minimal traffic impact on AQMA.
Contaminated Land RAG Assessment 2025	-
Contaminated Land Officer Comments 2025	-
Contaminated Land RAG Assessment 2023	-
Contaminated Land Officer Comments 2023	-
Contaminated Land RAG Assessment 2021	Amber
Contaminated Land Officer Comments 2021	Brownfield site, contamination expected, conditions required
Overall Suitability Score	Red
Further constraints	-
Agricultural Land Classification Grade 1	0
Agricultural Land Classification Grade 2	100
Agricultural Land Classification Grade 3	0
Agricultural Land Classification Grade 4	0
Agricultural Land Classification Non Agricultural	0
Agricultural Land Classification Urban	0
Source Protection Zone	0
Highways England Zones	South West
Available	-
Is the site controlled by a developer or landowner who has expressed an intention to develop?	The site was submitted by the landowner and/or site promoter who has confirmed that the site is available for development in the timescales indicated.
Are there known legal or ownership impediments to development?	No
Is there planning permission to develop the site?	No, Appeal withdrawn
When will the site be available for development?	0-5 Years

Available RAG	Green
Achievable	-
Is there a reasonable prospect that the site will be developed?	The land has been promoted by the landowner and or developer and is known to be available for development. The site has a low existing use value and mixed-use development is likely to be economically viable at an appropriate density.
Achievable RAG	Green
Capacity	-
Prevailing Density (weighted) (dwellings per ha)	30
Residential capacity at prevailing density	51
Estimated employment space (m2)	204
Estimated start date	0-5 Years
Estimated annual build-out rate (pa)	40-75
Development completion timescales (years)	0-5 Years

The Triangle, Fowlmere assessment



A map of The Triangle, Fowlmere

Site information	-
Site ID	115845
HELAA Site ID	40456
Suitable Site Area (ha)	1.01013183384456
Ward/Parish	Foxton
Greenfield or Previously Developed?	Greenfield
Category of site	Dispersal: Villages
Category of settlement	Within or adjacent to Group Village
Current use(s)	-
Proposed development	Residential
Proposed employment floorspace (m2)	0
Proposed residential capacity	24
Suitability	-
Adopted Development Plan Policies RAG 2025	Amber

Adopted Development Plan Policies Comment 2025	Development of the site has some potential policy constraints, but these could be overcome through the planning application process.
Flood Risk RAG Assessment 2025	Amber
Flood Risk Officer Comment 2025	Flood Zone: Wholly in Flood Zone 1. Surface Water Flooding: 6% lies in a 1 in 1000 year event
Flood Risk RAG Assessment 2023	-
Flood Risk Officer Comment 2023	-
Flood Risk RAG Assessment 2021	Green
Flood Risk Officer Comment 2021	The site is at low risk of flooding (within flood zone 1) and no risk from surface water flooding
Landscape RAG Assessment 2025	-
Landscape Comment 2025	-
Landscape RAG Assessment 2023	-
Landscape Comment 2023	-
Landscape RAG Assessment 2021	Amber
Landscape Comment 2021	This is a small irregular shaped grass field to the east of the village of Fowlmere outside and adjacent to the village settlement framework. Wide and local views are limited due to boundary planting. Development upon this site would have a negative impact to the settlement character. Landscape enhancement measures are recommended to mitigate.
Biodiversity and Geodiversity RAG Assessment 2025	-
Biodiversity and Geodiversity Officer Comments 2025	-
Biodiversity and Geodiversity Guideline Comments 2025	-
Biodiversity and Geodiversity RAG Assessment 2023	-
Biodiversity and Geodiversity Officer Comments 2023	-
Biodiversity and Geodiversity Guideline Comments 2023	-
Biodiversity and Geodiversity RAG Assessment 2021	Amber

Biodiversity and Geodiversity Officer Comments 2021	All residential development would require an assessment of recreational impacts on nearby SSSIs. Any applications would require consultation with Natural England in relation to Whittlesford-Thriplow Hummocky Fields SSSI 10m east. Any development would need to be very carefully designed to avoid impacts on SSSI and recreational impacts may be hard to avoid/mitigate. Habitats including trees, hedges and grassland may qualify as Habitats of Principal Importance/be of high ecological value and support protected or notable species. Applications may find provision of a net gain in biodiversity of a minimum of 10% difficult within their red line boundaries and may need to find off-site compensation.
Biodiversity and Geodiversity Guideline Comments 2021	Development of the site may have a detrimental impact on a designated site, or those with a regional or local protection but the impact could be reasonably mitigated or compensated.
Policy RAG Rating 2025	-
Policy Officer Comment 2025	-
Policy RAG Rating 2023	-
Policy Officer Comment 2023	-
Policy RAG Rating 2021	Green
Policy Officer Comments 2021	Site is not on protected open space designation. Any impact of the proposed development could be reasonably mitigated or compensated.
Historic Environment RAG Assessment 2025	-
Historic Environment Comments 2025	-
Historic Environment RAG Assessment 2023	-
Historic Environment Comments 2023	-
Historic Environment RAG Assessment 2021	Amber
Historic Environment Comments 2021	The site is within the setting of the listed building Fieldhouse, which derives some significance through its position within the highly rural surroundings .The cottage is particularly experienced in these surroundings on approach from north and east and both views will be affected by development on site. To avoid diminishing the setting, the South West site should be landscaped and kept free of buildings, the boundary to south and east should be retained and reinforced. Height of dwellings should step down towards east and south.
Archaeology RAG Assessment 2025	-
Archaeology Officer Comment 2025	-
Archaeology RAG Assessment 2023	-
Archaeology Officer Comment 2023	-
Archaeology RAG Assessment 2021	Amber

Archaeology Officer Comment 2021	Bronze Age ring ditch recorded to south. Undated ditches recorded during evaluation of adjacent site
Accessibility RAG Assessment 2025 - Automated	Amber
Accessibility RAG Assessment 2025 - Officer Verified	-
Accessibility Comment 2025	Adequate accessibility to key local services, transport, and employment opportunities.
Site Access RAG Assessment 2025	-
Site Access Officer Comment 2025	-
Site Access RAG Assessment 2023	-
Site Access Officer Comment 2023	-
Site Access RAG Assessment 2021	Amber
Site Access Officer Comment 2021	The proposed site is acceptable in principle subject to detailed design.
Transport and Roads RAG Assessment 2025	-
Transport and Roads Guideline Comments 2025	-
Transport and Roads RAG Assessment 2023	-
Transport and Roads Guideline Comments 2023	-
Transport and Roads RAG Assessment 2021	Amber
Transport and Roads Guideline Comments 2021	Any potential impact on the functioning of trunk roads and/or local roads could be reasonably mitigated.
Noise, Vibration, Odour and Light Pollution RAG Assessment 2025	-
Noise, Vibration, Odour and Light Pollution Guideline Comments 2025	-
Noise, Vibration, Odour and Light Pollution RAG Assessment 2023	-
Noise, Vibration, Odour and Light Pollution Guideline Comments 2023	-
Noise, Vibration, Odour and Light Pollution RAG Assessment 2021	Green

Noise, Vibration, Odour and Light Pollution Guideline Comments 2021	The site is capable of being developed to provide healthy internal and external environments in regard to noise / vibration/ odour/ Light Pollution after careful site layout, design and mitigation.
AQMA RAG Assessment 2025	-
Air Quality Officer Comment 2025	-
AQMA RAG Assessment 2023	-
Air Quality Officer Comment 2023	-
AQMA RAG Assessment 2021	Green
Air Quality Officer Comment 2021	Site does not lie within an AQMA. Minimal traffic impact on AQMA.
Contaminated Land RAG Assessment 2025	-
Contaminated Land Officer Comments 2025	-
Contaminated Land RAG Assessment 2023	-
Contaminated Land Officer Comments 2023	-
Contaminated Land RAG Assessment 2021	Amber
Contaminated Land Officer Comments 2021	Potential for historic contamination, conditions required.
Overall Suitability Score	Amber
Further constraints	-
Agricultural Land Classification Grade 1	0
Agricultural Land Classification Grade 2	100
Agricultural Land Classification Grade 3	0
Agricultural Land Classification Grade 4	0
Agricultural Land Classification Non Agricultural	0
Agricultural Land Classification Urban	0
Source Protection Zone	0
Highways England Zones	South West
Available	-
Is the site controlled by a developer or landowner who has expressed an intention to develop?	The site was submitted by the landowner and/or site promoter who has confirmed that the site is available for development in the timescales indicated.

Are there known legal or ownership impediments to development?	No
Is there planning permission to develop the site?	No relevant recent planning history
When will the site be available for development?	0-5 Years
Available RAG	Green
Achievable	-
Is there a reasonable prospect that the site will be developed?	The land has been promoted by the landowner and or developer and is known to be available for development. The site has a low existing use value and residential development is likely to be economically viable at an appropriate density.
Achievable RAG	Green
Capacity	-
Prevailing Density (weighted) (dwellings per ha)	30
Residential capacity at prevailing density	27
Estimated employment space (m2)	0
Estimated start date	0-5 Years
Estimated annual build-out rate (pa)	40-75
Development completion timescales (years)	0-5 Years

Land west side of Long Lane, Fowlmere assessment



A map of Land west side of Long Lane, Fowlmere

Site information	-
Site ID	115846
HELAA Site ID	40115
Suitable Site Area (ha)	1.65034791740457
Ward/Parish	Foxton
Greenfield or Previously Developed?	Greenfield
Category of site	Dispersal: Villages
Category of settlement	Within or adjacent to Group Village
Current use(s)	-
Proposed development	Residential
Proposed employment floorspace (m2)	0
Proposed residential capacity	40-50
Suitability	-
Adopted Development Plan Policies RAG 2025	Amber

Adopted Development Plan Policies Comment 2025	Development of the site has some potential policy constraints, but these could be overcome through the planning application process.
Flood Risk RAG Assessment 2025	Amber
Flood Risk Officer Comment 2025	Flood Zone: Wholly in Flood Zone 1. Surface Water Flooding: 3% lies in a 1 in 1000 year event
Flood Risk RAG Assessment 2023	-
Flood Risk Officer Comment 2023	-
Flood Risk RAG Assessment 2021	Amber
Flood Risk Officer Comment 2021	The site is within flood zone 2 (taking into account climate change) and/or is within an area at high, medium or low risk from surface water flooding.
Landscape RAG Assessment 2025	-
Landscape Comment 2025	-
Landscape RAG Assessment 2023	-
Landscape Comment 2023	-
Landscape RAG Assessment 2021	Amber
Landscape Comment 2021	The site is located to the north west of the village of Fowlmere and outside the village framework. Wider views are limited due to vegetation and built form. However, local and amenity views are high due to the open and low lying nature of land. Following appropriate landscape mitigation works the site is capable of accommodating a development. The strong rural character to be protected and retained, existing wide hedgerow to be protected and enhanced.
Biodiversity and Geodiversity RAG Assessment 2025	-
Biodiversity and Geodiversity Officer Comments 2025	-
Biodiversity and Geodiversity Guideline Comments 2025	-
Biodiversity and Geodiversity RAG Assessment 2023	-
Biodiversity and Geodiversity Officer Comments 2023	-
Biodiversity and Geodiversity Guideline Comments 2023	-

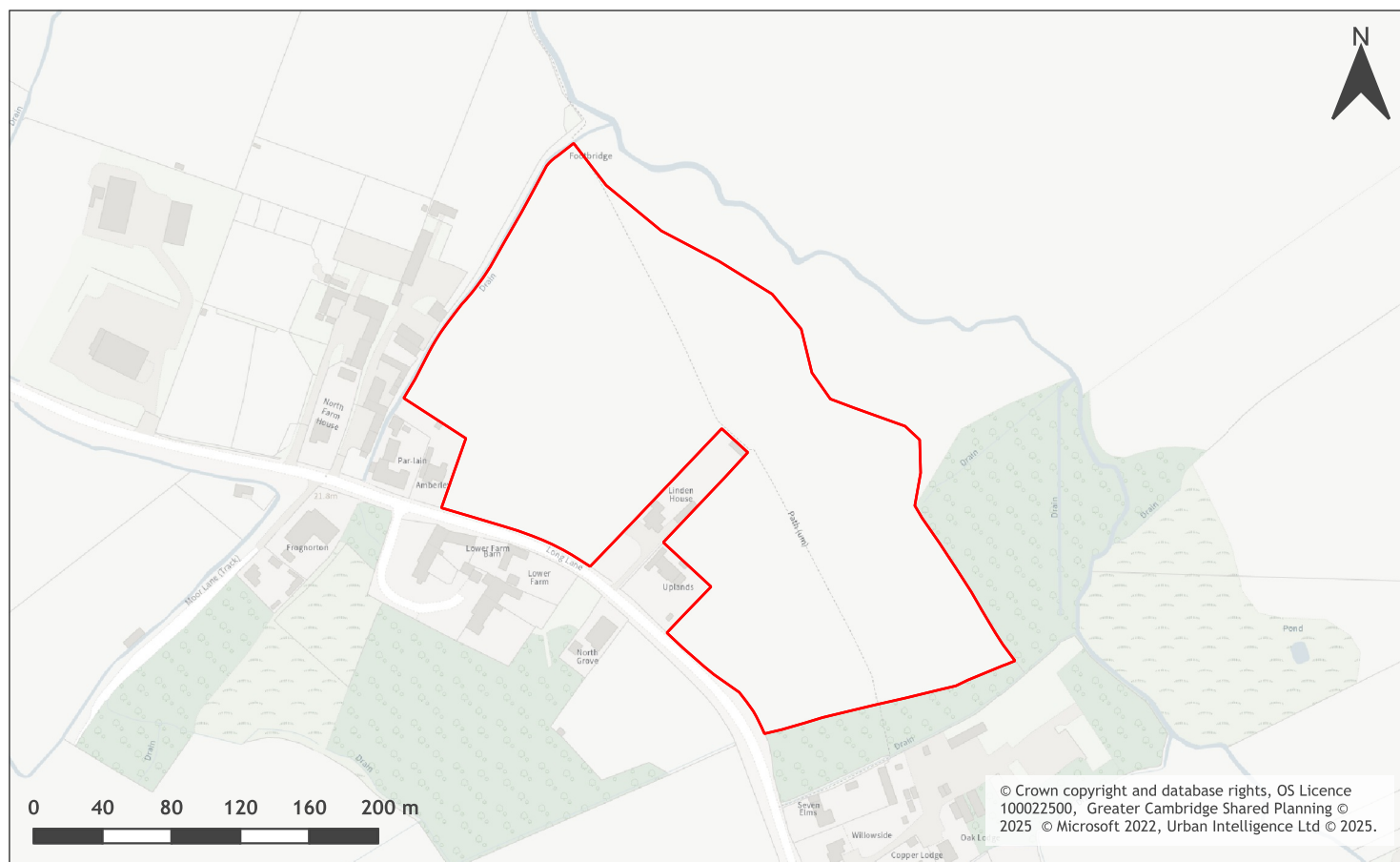
Biodiversity and Geodiversity RAG Assessment 2021	Amber
Biodiversity and Geodiversity Officer Comments 2021	All new housing developments will require assessment of increased visitor pressure on nearby SSSI. Any residential development above 50 outside of current urban area will require consultation with Natural England. There are no apparent priority habitats within the site; however, there are grasslands, hedges and wooded boundaries on site that are likely to have ecological value.
Biodiversity and Geodiversity Guideline Comments 2021	Development of the site may have a detrimental impact on a designated site, or those with a regional or local protection but the impact could be reasonably mitigated or compensated.
Policy RAG Rating 2025	-
Policy Officer Comment 2025	-
Policy RAG Rating 2023	-
Policy Officer Comment 2023	-
Policy RAG Rating 2021	Green
Policy Officer Comments 2021	Site is not on protected open space designation. Any impact of the proposed development could be reasonably mitigated or compensated.
Historic Environment RAG Assessment 2025	-
Historic Environment Comments 2025	-
Historic Environment RAG Assessment 2023	-
Historic Environment Comments 2023	-
Historic Environment RAG Assessment 2021	Amber
Historic Environment Comments 2021	Loss of area of open countryside at entrance to the Conservation Area which provides a buffer between the farmhouse and the settlement to the south, reflecting the historic rural character and setting of the Conservation Area. Development of the site could have a detrimental impact on a designated or non-designated heritage asset or the setting of a designated or non-designated heritage asset, but the impact could be reasonably mitigated.
Archaeology RAG Assessment 2025	-
Archaeology Officer Comment 2025	-
Archaeology RAG Assessment 2023	-
Archaeology Officer Comment 2023	-
Archaeology RAG Assessment 2021	Amber
Archaeology Officer Comment 2021	Located on the north edge of the historic village

Accessibility RAG Assessment 2025 - Automated	Amber
Accessibility RAG Assessment 2025 - Officer Verified	-
Accessibility Comment 2025	Adequate accessibility to key local services, transport, and employment opportunities.
Site Access RAG Assessment 2025	-
Site Access Officer Comment 2025	-
Site Access RAG Assessment 2023	-
Site Access Officer Comment 2023	-
Site Access RAG Assessment 2021	Amber
Site Access Officer Comment 2021	The proposed site is acceptable in principle subject to detailed design.
Transport and Roads RAG Assessment 2025	-
Transport and Roads Guideline Comments 2025	-
Transport and Roads RAG Assessment 2023	-
Transport and Roads Guideline Comments 2023	-
Transport and Roads RAG Assessment 2021	Amber
Transport and Roads Guideline Comments 2021	Any potential impact on the functioning of trunk roads and/or local roads could be reasonably mitigated.
Noise, Vibration, Odour and Light Pollution RAG Assessment 2025	-
Noise, Vibration, Odour and Light Pollution Guideline Comments 2025	-
Noise, Vibration, Odour and Light Pollution RAG Assessment 2023	-
Noise, Vibration, Odour and Light Pollution Guideline Comments 2023	-
Noise, Vibration, Odour and Light Pollution RAG Assessment 2021	Amber
Noise, Vibration, Odour and Light Pollution Guideline Comments 2021	The site is capable of being developed to provide healthy internal and external environments in regard to noise / vibration/ odour/ Light Pollution after careful site layout, design and mitigation.

AQMA RAG Assessment 2025	-
Air Quality Officer Comment 2025	-
AQMA RAG Assessment 2023	-
Air Quality Officer Comment 2023	-
AQMA RAG Assessment 2021	Green
Air Quality Officer Comment 2021	Site does not lie within an AQMA. Minimal traffic impact on AQMA.
Contaminated Land RAG Assessment 2025	-
Contaminated Land Officer Comments 2025	-
Contaminated Land RAG Assessment 2023	-
Contaminated Land Officer Comments 2023	-
Contaminated Land RAG Assessment 2021	Amber
Contaminated Land Officer Comments 2021	Potential for historic contamination, conditions required.
Overall Suitability Score	Amber
Further constraints	-
Agricultural Land Classification Grade 1	0
Agricultural Land Classification Grade 2	100
Agricultural Land Classification Grade 3	0
Agricultural Land Classification Grade 4	0
Agricultural Land Classification Non Agricultural	0
Agricultural Land Classification Urban	0
Source Protection Zone	0
Highways England Zones	South West
Available	-
Is the site controlled by a developer or landowner who has expressed an intention to develop?	The site was submitted by the landowner and/or site promoter who has confirmed that the site is available for development in the timescales indicated.
Are there known legal or ownership impediments to development?	No

Is there planning permission to develop the site?	No relevant recent planning history
When will the site be available for development?	0-5 Years
Available RAG	Green
Achievable	-
Is there a reasonable prospect that the site will be developed?	The land has been promoted by the landowner and or developer and is known to be available for development. The site has a low existing use value and residential development is likely to be economically viable at an appropriate density.
Achievable RAG	Green
Capacity	-
Prevailing Density (weighted) (dwellings per ha)	30
Residential capacity at prevailing density	45
Estimated employment space (m2)	0
Estimated start date	0-5 Years
Estimated annual build-out rate (pa)	40-75
Development completion timescales (years)	0-5 Years

Land to north-east side of Long Lane, Fowlmere assessment



A map of Land to north-east side of Long Lane, Fowlmere

Site information	-
Site ID	115847
HELAA Site ID	40012
Suitable Site Area (ha)	5.60978499075964
Ward/Parish	Foxton
Greenfield or Previously Developed?	Greenfield
Category of site	Dispersal: Villages
Category of settlement	Not within or adjacent to an existing settlement
Current use(s)	-
Proposed development	Residential
Proposed employment floorspace (m2)	0
Proposed residential capacity	158
Suitability	-
Adopted Development Plan Policies RAG 2025	Amber

Adopted Development Plan Policies Comment 2025	Development of the site has some potential policy constraints, but these could be overcome through the planning application process.
Flood Risk RAG Assessment 2025	Amber
Flood Risk Officer Comment 2025	Flood Zone: Partly in Flood Zone 2 (2%). Partly in Flood Zone 3 (2%).. Surface Water Flooding: 1% lies in a 1 in 100 year event. 3% lies in a 1 in 1000 year event
Flood Risk RAG Assessment 2023	-
Flood Risk Officer Comment 2023	-
Flood Risk RAG Assessment 2021	Amber
Flood Risk Officer Comment 2021	The site is within flood zones 3a or 3b.
Landscape RAG Assessment 2025	-
Landscape Comment 2025	-
Landscape RAG Assessment 2023	Red
Landscape Comment 2023	New information has been submitted to support development of the site including a concept masterplan and text in response to the previous landscape assessment. The response does not address the potential impact of new buildings on the landscape character of the site and its rural setting and edge of village location and so the assessment remains red. The Parish Council information does not affect our assessment. HS 07/10/2022
Landscape RAG Assessment 2021	Red
Landscape Comment 2021	The landscape impact of the proposed development would be minor adverse on the NCA/LCA. Conversely, however, the harm on the village form and townscape of Fowlmere would be significant. Development would continue a pattern of sprawl which has begun but should not be encouraged.
Biodiversity and Geodiversity RAG Assessment 2025	-
Biodiversity and Geodiversity Officer Comments 2025	-
Biodiversity and Geodiversity Guideline Comments 2025	-
Biodiversity and Geodiversity RAG Assessment 2023	Amber
Biodiversity and Geodiversity Officer Comments 2023	No additional information has been provided in relation to ecology impacts and mitigation and therefore there is no change to the site assessment scoring.

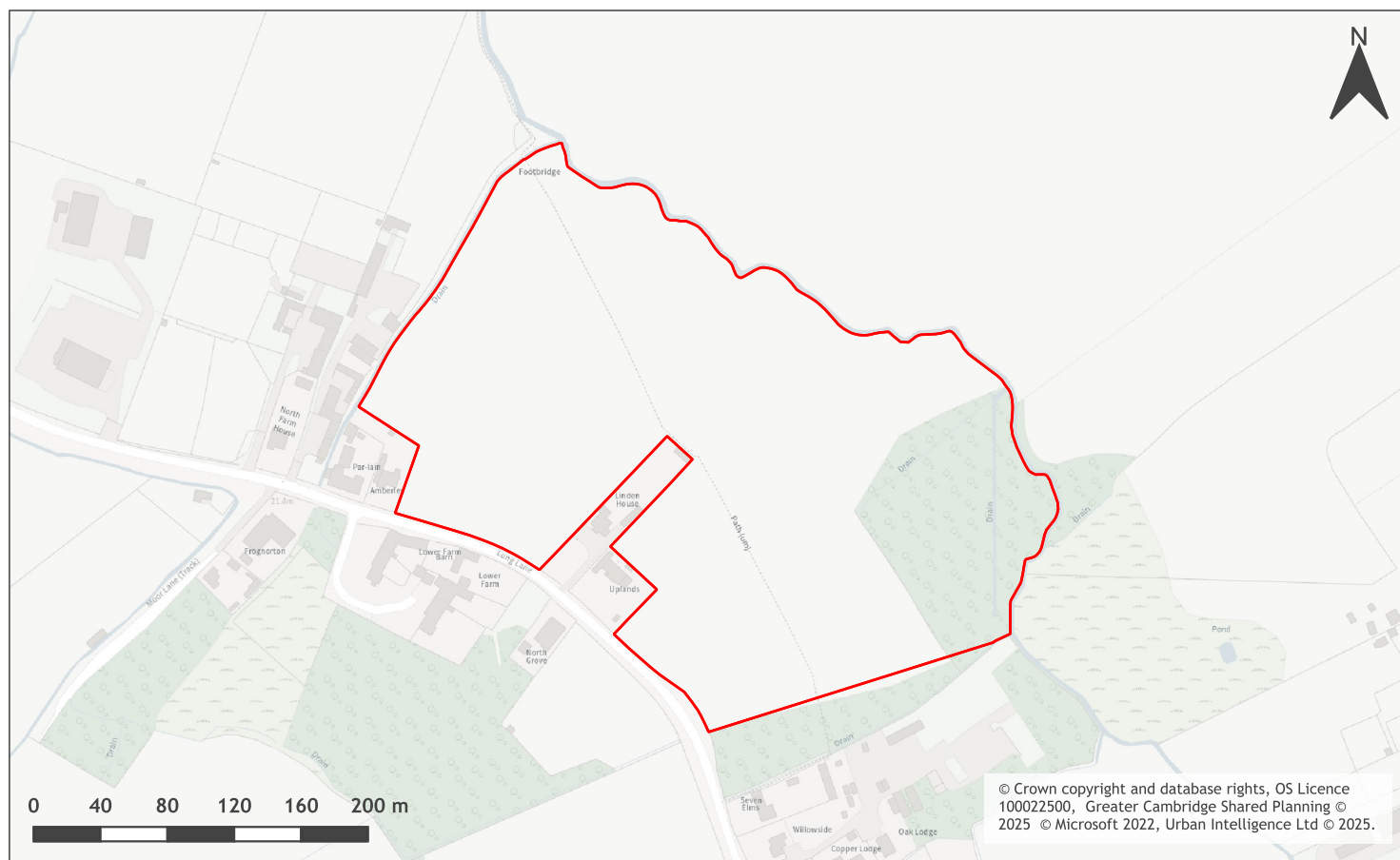
Biodiversity and Geodiversity Guideline Comments 2023	Development of the site may have a detrimental impact on a designated site, or those with a regional or local protection but the impact could be reasonably mitigated or compensated.
Biodiversity and Geodiversity RAG Assessment 2021	Amber
Biodiversity and Geodiversity Officer Comments 2021	All new housing developments will require assessment of increased visitor pressure on nearby SSSI, and any residential development above 50 outside of current urban area will require consultation with Natural England. There are no apparent priority habitats within the site; however there are grasslands, hedges, and wooded boundaries on site that are likely to have ecological value. Applications may find provision of a 10% net gain in biodiversity difficult within their red line boundaries and may need to find offsite compensation to comply with up-coming National legislation and developing local policies.
Biodiversity and Geodiversity Guideline Comments 2021	Development of the site may have a detrimental impact on a designated site, or those with a regional or local protection but the impact could be reasonably mitigated or compensated.
Policy RAG Rating 2025	-
Policy Officer Comment 2025	-
Policy RAG Rating 2023	-
Policy Officer Comment 2023	-
Policy RAG Rating 2021	Green
Policy Officer Comments 2021	Site is not on protected open space designation. Any impact of the proposed development could be reasonably mitigated or compensated.
Historic Environment RAG Assessment 2025	-
Historic Environment Comments 2025	-
Historic Environment RAG Assessment 2023	Amber
Historic Environment Comments 2023	The additional information provided has introduced a buffer between the development and listed building. This is not in itself enough to mitigate any potential harm to the setting of the listed building given the size and urban nature of the proposed development. The Rag rating remains amber.
Historic Environment RAG Assessment 2021	Amber
Historic Environment Comments 2021	A large development on this site could potentially harm the character and setting of the approach to the village and the listed building. The impact could be reasonably mitigated.
Archaeology RAG Assessment 2025	-
Archaeology Officer Comment 2025	-
Archaeology RAG Assessment 2023	-
Archaeology Officer Comment 2023	-

Archaeology RAG Assessment 2021	Amber
Archaeology Officer Comment 2021	Located on the north edge of the historic village. Extensive scheduled Iron Age settlement to north.
Accessibility RAG Assessment 2025 - Automated	Amber
Accessibility RAG Assessment 2025 - Officer Verified	-
Accessibility Comment 2025	Adequate accessibility to key local services, transport, and employment opportunities.
Site Access RAG Assessment 2025	-
Site Access Officer Comment 2025	-
Site Access RAG Assessment 2023	Amber
Site Access Officer Comment 2023	Based on the new information provided, the site access assessment remains unchanged as it is acceptable in principle, subject to detailed design at a planning application stage.
Site Access RAG Assessment 2021	Amber
Site Access Officer Comment 2021	The proposed site is acceptable in principle subject to detailed design.
Transport and Roads RAG Assessment 2025	-
Transport and Roads Guideline Comments 2025	-
Transport and Roads RAG Assessment 2023	Amber
Transport and Roads Guideline Comments 2023	Based on the new information provided, the assessment scoring remains Amber as the site is remote from any existing non-motorised user or passenger transport infrastructure, will require links to Meldreth station potentially via the Melbourn Greenway providing passenger transport links to Cambridge and will impact on local junctions.
Transport and Roads RAG Assessment 2021	Amber
Transport and Roads Guideline Comments 2021	Any potential impact on the functioning of trunk roads and/or local roads could be reasonably mitigated.
Noise, Vibration, Odour and Light Pollution RAG Assessment 2025	-
Noise, Vibration, Odour and Light Pollution Guideline Comments 2025	-
Noise, Vibration, Odour and Light Pollution RAG Assessment 2023	-
Noise, Vibration, Odour and Light Pollution Guideline Comments 2023	-

Noise, Vibration, Odour and Light Pollution RAG Assessment 2021	Amber
Noise, Vibration, Odour and Light Pollution Guideline Comments 2021	The site is capable of being developed to provide healthy internal and external environments in regard to noise / vibration/ odour/ Light Pollution after careful site layout, design and mitigation.
AQMA RAG Assessment 2025	-
Air Quality Officer Comment 2025	-
AQMA RAG Assessment 2023	-
Air Quality Officer Comment 2023	-
AQMA RAG Assessment 2021	Green
Air Quality Officer Comment 2021	Site does not lie within an AQMA. Minimal traffic impact on AQMA.
Contaminated Land RAG Assessment 2025	-
Contaminated Land Officer Comments 2025	-
Contaminated Land RAG Assessment 2023	-
Contaminated Land Officer Comments 2023	-
Contaminated Land RAG Assessment 2021	Amber
Contaminated Land Officer Comments 2021	Previous agricultural land use. Potential for historic contamination, conditions required.
Overall Suitability Score	Red
Further constraints	-
Agricultural Land Classification Grade 1	0
Agricultural Land Classification Grade 2	100
Agricultural Land Classification Grade 3	0
Agricultural Land Classification Grade 4	0
Agricultural Land Classification Non Agricultural	0
Agricultural Land Classification Urban	0
Source Protection Zone	0
Highways England Zones	South West
Available	-

Is the site controlled by a developer or landowner who has expressed an intention to develop?	The site was submitted by the landowner and/or site promoter who has confirmed that the site is available for development in the timescales indicated.
Are there known legal or ownership impediments to development?	No
Is there planning permission to develop the site?	No relevant recent planning history
When will the site be available for development?	0-5 Years
Available RAG	Green
Achievable	-
Is there a reasonable prospect that the site will be developed?	The land has been promoted by the landowner and or developer and is known to be available for development. The site has a low existing use value and residential development is likely to be economically viable at an appropriate density.
Achievable RAG	Green
Capacity	-
Prevailing Density (weighted) (dwellings per ha)	30
Residential capacity at prevailing density	118
Estimated employment space (m2)	0
Estimated start date	0-5 Years
Estimated annual build-out rate (pa)	40-75
Development completion timescales (years)	6-10 Years

Land north-east of Long Lane, Fowlmere assessment



A map of Land north-east of Long Lane, Fowlmere

Site information	-
Site ID	115848
HELAA Site ID	51059
Suitable Site Area (ha)	8.07957499940663
Ward/Parish	Foxton
Greenfield or Previously Developed?	Greenfield
Category of site	Dispersal: Villages
Category of settlement	Not within or adjacent to an existing settlement
Current use(s)	-
Proposed development	Residential
Proposed employment floorspace (m2)	0
Proposed residential capacity	75-150
Suitability	-
Adopted Development Plan Policies RAG 2025	Amber

Adopted Development Plan Policies Comment 2025	Development of the site has some potential policy constraints, but these could be overcome through the planning application process.
Flood Risk RAG Assessment 2025	Amber
Flood Risk Officer Comment 2025	Flood Zone: Partly in Flood Zone 2 (5%). Partly in Flood Zone 3 (26%).. Surface Water Flooding: 4% lies in a 1 in 1000 year event
Flood Risk RAG Assessment 2023	-
Flood Risk Officer Comment 2023	-
Flood Risk RAG Assessment 2021	Amber
Flood Risk Officer Comment 2021	The site contains areas at high, or medium risk from surface water flooding and/or the site contains some land in Flood Zones 2 and/or 3 but there is sufficient land in Flood Zone 1 to accommodate at least 5 additional dwellings or an increase of 500 square metres of employment floorspace.
Landscape RAG Assessment 2025	-
Landscape Comment 2025	-
Landscape RAG Assessment 2023	-
Landscape Comment 2023	-
Landscape RAG Assessment 2021	Red
Landscape Comment 2021	The site is in a rural location outside the settlement framework of the village. Wide and local views are high due to low lying nature of land and open landscape. Development upon this site would have a significant adverse impact upon the settlement character. A significantly reduced scheme may be acceptable subject to landscape mitigation and retention of PROW.
Biodiversity and Geodiversity RAG Assessment 2025	-
Biodiversity and Geodiversity Officer Comments 2025	-
Biodiversity and Geodiversity Guideline Comments 2025	-
Biodiversity and Geodiversity RAG Assessment 2023	-
Biodiversity and Geodiversity Officer Comments 2023	-
Biodiversity and Geodiversity Guideline Comments 2023	-

Biodiversity and Geodiversity RAG Assessment 2021	Amber
Biodiversity and Geodiversity Officer Comments 2021	All new housing developments will require assessment of increased visitor pressure on nearby SSSI (closest is 500m), and any residential development above 50 outside of current urban area will require consultation with Natural England. Hedgerows, boundary watercourses and wooded copse in north-east may qualify as Habitats of Principal Importance/be of high ecological value and support protected or notable species. Arable habitats likely to be of low ecological value, although may support farmland birds. Applications may find provision of a 10% net gain in biodiversity difficult within their red line boundaries and may need to find off-site compensation to comply with up-coming National legislation and developing local policies.
Biodiversity and Geodiversity Guideline Comments 2021	Development of the site may have a detrimental impact on a designated site, or those with a regional or local protection but the impact could be reasonably mitigated or compensated.
Policy RAG Rating 2025	-
Policy Officer Comment 2025	-
Policy RAG Rating 2023	-
Policy Officer Comment 2023	-
Policy RAG Rating 2021	Green
Policy Officer Comments 2021	Site is not on protected open space designation. Any impact of the proposed development could be reasonably mitigated or compensated.
Historic Environment RAG Assessment 2025	-
Historic Environment Comments 2025	-
Historic Environment RAG Assessment 2023	-
Historic Environment Comments 2023	-
Historic Environment RAG Assessment 2021	Amber
Historic Environment Comments 2021	There are no known heritage assets on the site, but development could have a detrimental impact on the setting of the listed building opposite but this impact could be reasonably mitigated.
Archaeology RAG Assessment 2025	-
Archaeology Officer Comment 2025	-
Archaeology RAG Assessment 2023	-
Archaeology Officer Comment 2023	-
Archaeology RAG Assessment 2021	Amber
Archaeology Officer Comment 2021	Located on the north edge of the historic village. Extensive scheduled Iron Age settlement to north.

Accessibility RAG Assessment 2025 - Automated	Amber
Accessibility RAG Assessment 2025 - Officer Verified	-
Accessibility Comment 2025	Adequate accessibility to key local services, transport, and employment opportunities.
Site Access RAG Assessment 2025	-
Site Access Officer Comment 2025	-
Site Access RAG Assessment 2023	-
Site Access Officer Comment 2023	-
Site Access RAG Assessment 2021	Amber
Site Access Officer Comment 2021	The proposed site is acceptable in principle subject to detailed design.
Transport and Roads RAG Assessment 2025	-
Transport and Roads Guideline Comments 2025	-
Transport and Roads RAG Assessment 2023	-
Transport and Roads Guideline Comments 2023	-
Transport and Roads RAG Assessment 2021	Amber
Transport and Roads Guideline Comments 2021	Any potential impact on the functioning of trunk roads and/or local roads could be reasonably mitigated.
Noise, Vibration, Odour and Light Pollution RAG Assessment 2025	-
Noise, Vibration, Odour and Light Pollution Guideline Comments 2025	-
Noise, Vibration, Odour and Light Pollution RAG Assessment 2023	-
Noise, Vibration, Odour and Light Pollution Guideline Comments 2023	-
Noise, Vibration, Odour and Light Pollution RAG Assessment 2021	Amber
Noise, Vibration, Odour and Light Pollution Guideline Comments 2021	The site is capable of being developed to provide healthy internal and external environments in regard to noise / vibration/ odour/ Light Pollution after careful site layout, design and mitigation.

AQMA RAG Assessment 2025	-
Air Quality Officer Comment 2025	-
AQMA RAG Assessment 2023	-
Air Quality Officer Comment 2023	-
AQMA RAG Assessment 2021	Green
Air Quality Officer Comment 2021	Site does not lie within an AQMA. Minimal traffic impact on AQMA.
Contaminated Land RAG Assessment 2025	-
Contaminated Land Officer Comments 2025	-
Contaminated Land RAG Assessment 2023	-
Contaminated Land Officer Comments 2023	-
Contaminated Land RAG Assessment 2021	Amber
Contaminated Land Officer Comments 2021	Potential for historic contamination, conditions required.
Overall Suitability Score	Red
Further constraints	-
Agricultural Land Classification Grade 1	0
Agricultural Land Classification Grade 2	100
Agricultural Land Classification Grade 3	0
Agricultural Land Classification Grade 4	0
Agricultural Land Classification Non Agricultural	0
Agricultural Land Classification Urban	0
Source Protection Zone	0
Highways England Zones	South West
Available	-
Is the site controlled by a developer or landowner who has expressed an intention to develop?	The site was submitted by the landowner and/or site promoter who has confirmed that the site is available for development in the timescales indicated.
Are there known legal or ownership impediments to development?	No

Is there planning permission to develop the site?	No relevant recent planning history
When will the site be available for development?	0-5 Years
Available RAG	Green
Achievable	-
Is there a reasonable prospect that the site will be developed?	The land has been promoted by the landowner and or developer and is known to be available for development. The site has a low existing use value and residential development is likely to be economically viable at an appropriate density.
Achievable RAG	Green
Capacity	-
Prevailing Density (weighted) (dwellings per ha)	30
Residential capacity at prevailing density	170
Estimated employment space (m2)	0
Estimated start date	0-5 Years
Estimated annual build-out rate (pa)	40-75
Development completion timescales (years)	0-5 Years

Land on north-east side of Long Lane, Fowlmere assessment



A map of Land on north-east side of Long Lane, Fowlmere

Site information	-
Site ID	115850
HELAA Site ID	40308
Suitable Site Area (ha)	0.691950193347981
Ward/Parish	Foxton
Greenfield or Previously Developed?	Greenfield
Category of site	Dispersal: Villages
Category of settlement	Not within or adjacent to an existing settlement
Current use(s)	-
Proposed development	Residential
Proposed employment floorspace (m2)	0
Proposed residential capacity	25
Suitability	-
Adopted Development Plan Policies RAG 2025	Amber

Adopted Development Plan Policies Comment 2025	Development of the site has some potential policy constraints, but these could be overcome through the planning application process.
Flood Risk RAG Assessment 2025	Green
Flood Risk Officer Comment 2025	Flood Zone: Wholly in Flood Zone 1. Surface Water Flooding: None
Flood Risk RAG Assessment 2023	-
Flood Risk Officer Comment 2023	-
Flood Risk RAG Assessment 2021	Green
Flood Risk Officer Comment 2021	The site is at low risk of flooding (within flood zone 1) and no risk from surface water flooding
Landscape RAG Assessment 2025	-
Landscape Comment 2025	-
Landscape RAG Assessment 2023	-
Landscape Comment 2023	-
Landscape RAG Assessment 2021	Amber
Landscape Comment 2021	This site is divided into 2no. linear plots separated by 2no. existing residential properties. They are part of an existing agricultural field little or no boundaries particularly to the north and south. Wide views are limited. However, local views are high due to topography and gappy boundary vegetation. The landscape impact of the proposed development would be minor adverse. Landscape mitigation measures would be required.
Biodiversity and Geodiversity RAG Assessment 2025	-
Biodiversity and Geodiversity Officer Comments 2025	-
Biodiversity and Geodiversity Guideline Comments 2025	-
Biodiversity and Geodiversity RAG Assessment 2023	-
Biodiversity and Geodiversity Officer Comments 2023	-
Biodiversity and Geodiversity Guideline Comments 2023	-
Biodiversity and Geodiversity RAG Assessment 2021	Amber

Biodiversity and Geodiversity Officer Comments 2021	All new housing developments will require assessment of increased visitor pressure on nearby SSSI. There are no apparent priority habitats within the site; however, there are grasslands, wooded areas, hedges, and wooded boundaries on site that are likely to have ecological value. Applications may find provision of a 10% net gain in biodiversity difficult within their red line boundaries and may need to find offsite compensation to comply with up-coming National legislation and developing local policies.
Biodiversity and Geodiversity Guideline Comments 2021	Development of the site may have a detrimental impact on a designated site, or those with a regional or local protection but the impact could be reasonably mitigated or compensated.
Policy RAG Rating 2025	-
Policy Officer Comment 2025	-
Policy RAG Rating 2023	-
Policy Officer Comment 2023	-
Policy RAG Rating 2021	Green
Policy Officer Comments 2021	Site is not on protected open space designation. Any impact of the proposed development could be reasonably mitigated or compensated.
Historic Environment RAG Assessment 2025	-
Historic Environment Comments 2025	-
Historic Environment RAG Assessment 2023	-
Historic Environment Comments 2023	-
Historic Environment RAG Assessment 2021	Amber
Historic Environment Comments 2021	Development of the site could have a detrimental impact on a designated or non-designated heritage asset or the setting of a designated or non-designated heritage asset, but the impact could be reasonably mitigated.
Archaeology RAG Assessment 2025	-
Archaeology Officer Comment 2025	-
Archaeology RAG Assessment 2023	-
Archaeology Officer Comment 2023	-
Archaeology RAG Assessment 2021	Amber
Archaeology Officer Comment 2021	Located on the north edge of the historic village. Extensive scheduled Iron Age settlement to north.
Accessibility RAG Assessment 2025 - Automated	Amber

Accessibility RAG Assessment 2025 - Officer Verified	-
Accessibility Comment 2025	Adequate accessibility to key local services, transport, and employment opportunities.
Site Access RAG Assessment 2025	-
Site Access Officer Comment 2025	-
Site Access RAG Assessment 2023	-
Site Access Officer Comment 2023	-
Site Access RAG Assessment 2021	Amber
Site Access Officer Comment 2021	The proposed site is acceptable in principle subject to detailed design.
Transport and Roads RAG Assessment 2025	-
Transport and Roads Guideline Comments 2025	-
Transport and Roads RAG Assessment 2023	-
Transport and Roads Guideline Comments 2023	-
Transport and Roads RAG Assessment 2021	Amber
Transport and Roads Guideline Comments 2021	Any potential impact on the functioning of trunk roads and/or local roads could be reasonably mitigated.
Noise, Vibration, Odour and Light Pollution RAG Assessment 2025	-
Noise, Vibration, Odour and Light Pollution Guideline Comments 2025	-
Noise, Vibration, Odour and Light Pollution RAG Assessment 2023	-
Noise, Vibration, Odour and Light Pollution Guideline Comments 2023	-
Noise, Vibration, Odour and Light Pollution RAG Assessment 2021	Amber
Noise, Vibration, Odour and Light Pollution Guideline Comments 2021	The site is capable of being developed to provide healthy internal and external environments in regard to noise / vibration/ odour/ Light Pollution after careful site layout, design and mitigation.
AQMA RAG Assessment 2025	-
Air Quality Officer Comment 2025	-