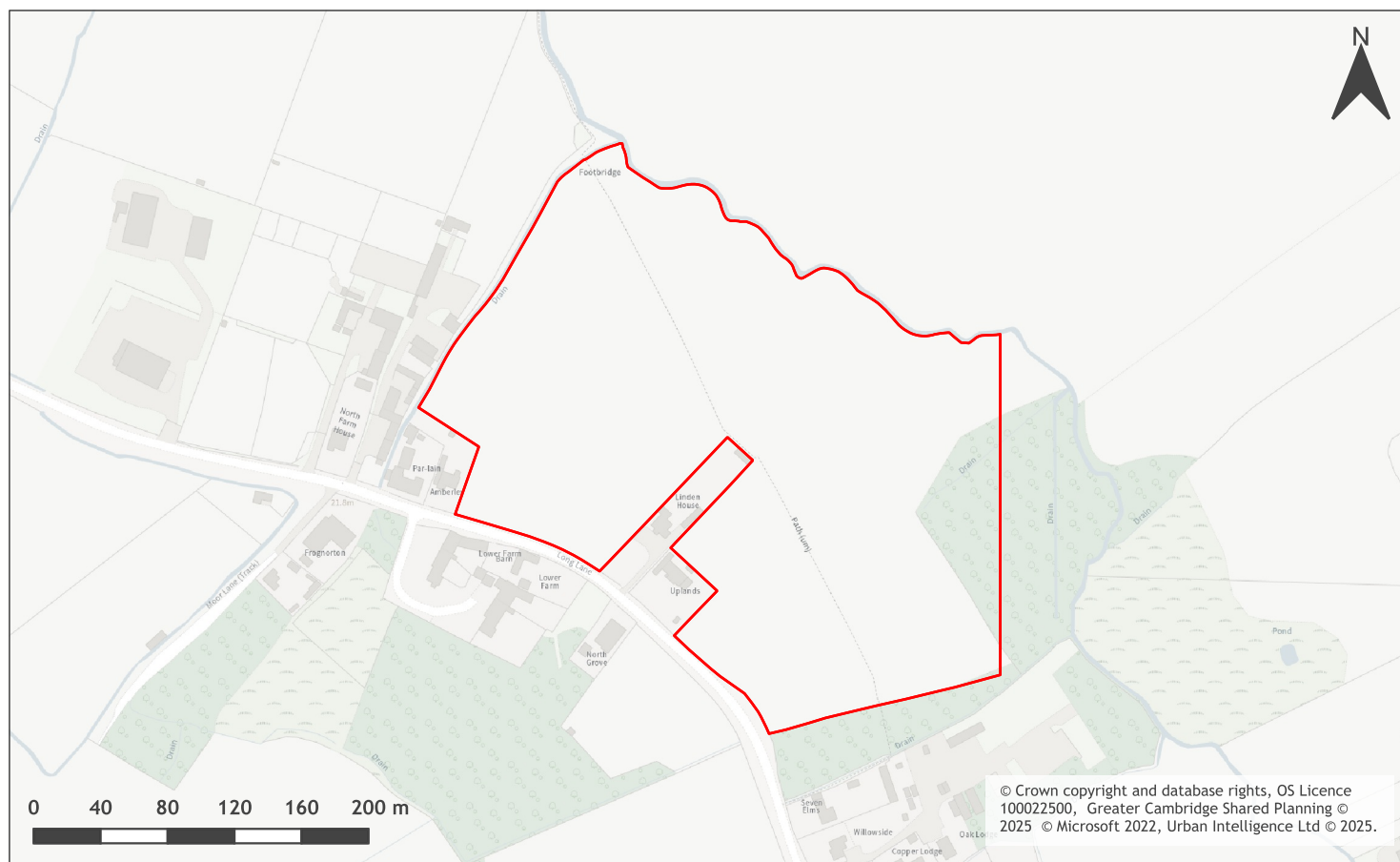


## Land at Long Lane, Fowlmere assessment



A map of Land at Long Lane, Fowlmere

Site information	-
Site ID	115163
HELAA Site ID	59408
Suitable Site Area (ha)	7.24967549884363
Ward/Parish	Foxton
Greenfield or Previously Developed?	Greenfield
Category of site	Dispersal: Villages
Category of settlement	Not within or adjacent to an existing settlement
Current use(s)	Agricultural land/building
Proposed development	Residential
Proposed employment floorspace (m2)	0
Proposed residential capacity	130
Suitability	-
Adopted Development Plan Policies RAG 2025	Amber

Adopted Development Plan Policies Comment 2025	Development of the site has some potential policy constraints, but these could be overcome through the planning application process.
Flood Risk RAG Assessment 2025	Amber
Flood Risk Officer Comment 2025	Flood Zone: Partly in Flood Zone 2 (5%). Partly in Flood Zone 3 (26%).. Surface Water Flooding: 4% lies in a 1 in 1000 year event
Flood Risk RAG Assessment 2023	Amber
Flood Risk Officer Comment 2023	-
Flood Risk RAG Assessment 2021	-
Flood Risk Officer Comment 2021	-
Landscape RAG Assessment 2025	-
Landscape Comment 2025	-
Landscape RAG Assessment 2023	Red
Landscape Comment 2023	New information has been submitted to support development of the site including a concept masterplan and text in response to the previous landscape assessment. The response does not address the potential impact of new buildings on the landscape character of the site, its rural setting and edge of village location and so the assessment remains red. The Parish Council information doesn't change our assessment HS 07/10/22
Landscape RAG Assessment 2021	-
Landscape Comment 2021	-
Biodiversity and Geodiversity RAG Assessment 2025	Amber
Biodiversity and Geodiversity Officer Comments 2025	Having considered the updated information, the overall assessment score remains unchanged. A development of the size and scale described would likely meet the criteria set out by Natural England that would raise concerns regarding impacts to statutory protected sites. This includes increases in recreational pressure on nearby statutory protected sites.
Biodiversity and Geodiversity Guideline Comments 2025	Development of the site may have a detrimental impact on a designated site or those with a regional or local protection, but the impact could be reasonably mitigated or compensated.
Biodiversity and Geodiversity RAG Assessment 2023	Amber
Biodiversity and Geodiversity Officer Comments 2023	Discharge to ground or surface water of more than 5m <sup>3</sup> per day would require consultation with Natural England. All new housing developments will also require assessment of increased visitor pressure on nearby SSSIs. The deciduous woodland Priority habitat is present within the site boundary. The arable land on site is likely to contain limited ecological value, but may contain potential to support breeding and wintering populations of farmland birds.

Biodiversity and Geodiversity Guideline Comments 2023	Development of the site may have a detrimental impact on a designated site, or those with a regional or local protection but the impact could be reasonably mitigated or compensated.
Biodiversity and Geodiversity RAG Assessment 2021	Amber
Biodiversity and Geodiversity Officer Comments 2021	-
Biodiversity and Geodiversity Guideline Comments 2021	-
Policy RAG Rating 2025	-
Policy Officer Comment 2025	-
Policy RAG Rating 2023	Green
Policy Officer Comment 2023	Site is not on protected open space designation. Any impact of the proposed development could be reasonably mitigated or compensated.
Policy RAG Rating 2021	-
Policy Officer Comments 2021	-
Historic Environment RAG Assessment 2025	Amber
Historic Environment Comments 2025	Based on the additional information (lower quantum of development) the RAG score remains amber. Development of the site could still have a detrimental impact on the rural character that adds to the significance of the setting of Lower Farmhouse (grade II). However the impact could be reasonably mitigated if handled sensitively with careful layout, form, density and landscaping.
Historic Environment RAG Assessment 2023	Amber
Historic Environment Comments 2023	The development site is rural in character and this adds to the significance of the setting of the grade II listed Lower Farmhouse which is directly adjacent to the site. There is a Public Right of Way off Long Lane, through the proposed site which provides views towards listed building. Development of the site could have a detrimental affect on it but it is considered that the impact could be reasonably mitigated if handled sensitively. This is acknowledged in the supporting documents.
Historic Environment RAG Assessment 2021	-
Historic Environment Comments 2021	-
Archaeology RAG Assessment 2025	-
Archaeology Officer Comment 2025	-
Archaeology RAG Assessment 2023	Amber
Archaeology Officer Comment 2023	Located on the north edge of the historic village. Extensive scheduled Iron Age settlement to north.
Archaeology RAG Assessment 2021	-

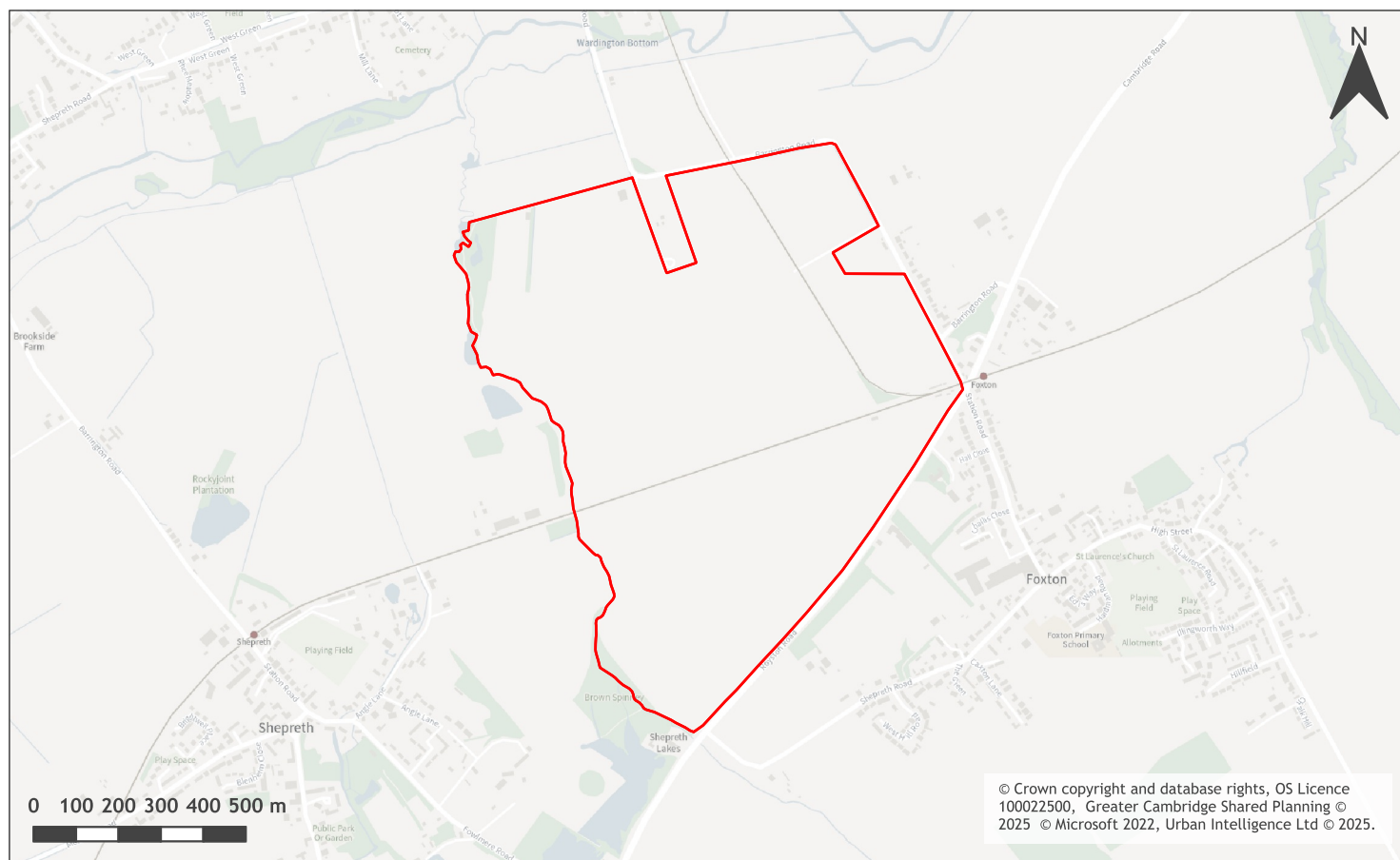
Archaeology Officer Comment 2021	-
Accessibility RAG Assessment 2025 - Automated	Amber
Accessibility RAG Assessment 2025 - Officer Verified	-
Accessibility Comment 2025	Adequate accessibility to key local services, transport, and employment opportunities. Proposed development would not require delivery of accompanying key services
Site Access RAG Assessment 2025	-
Site Access Officer Comment 2025	-
Site Access RAG Assessment 2023	Amber
Site Access Officer Comment 2023	The proposed site is acceptable in principle, subject to detailed design at a planning application stage.
Site Access RAG Assessment 2021	-
Site Access Officer Comment 2021	-
Transport and Roads RAG Assessment 2025	-
Transport and Roads Guideline Comments 2025	-
Transport and Roads RAG Assessment 2023	Amber
Transport and Roads Guideline Comments 2023	The site is remote from any existing Non-Motorised User or passenger transport infrastructure and will therefore require links to Meldreth station potentially via the Melbourn Greenway and to provide passenger transport links into Cambridge. The site will potentially impact on local junctions and will therefore require a robust Travel Plan.
Transport and Roads RAG Assessment 2021	-
Transport and Roads Guideline Comments 2021	-
Noise, Vibration, Odour and Light Pollution RAG Assessment 2025	Amber
Noise, Vibration, Odour and Light Pollution Guideline Comments 2025	The site is capable of being developed to provide healthy internal and external environments in regard to noise / vibration/ odour/ light pollution after careful site layout, design and mitigation.
Noise, Vibration, Odour and Light Pollution RAG Assessment 2023	-
Noise, Vibration, Odour and Light Pollution Guideline Comments 2023	The proposed site will be affected by road traffic noise from nearby main roads but is acceptable in principle subject to appropriate detailed design considerations and mitigation. Detailed site specific assessments will be required for any future planning applications at this location.



Noise, Vibration, Odour and Light Pollution RAG Assessment 2021	-
Noise, Vibration, Odour and Light Pollution Guideline Comments 2021	-
AQMA RAG Assessment 2025	Amber
Air Quality Officer Comment 2025	Based on the additional information provided, assessment of the site remains unchanged as Amber. The site does not fall within an Air Quality Management Area (AQMA). Given the scale of the scheme, inherent/intrinsic designed-in air quality mitigation measures may be necessary to offset impacts on designated AQMAs.
AQMA RAG Assessment 2023	Amber
Air Quality Officer Comment 2023	The site is located outside AQMA but there is potential for an impact on AQMA which will require inherent / intrinsic designed in Air Quality mitigation.
AQMA RAG Assessment 2021	-
Air Quality Officer Comment 2021	-
Contaminated Land RAG Assessment 2025	Amber
Contaminated Land Officer Comments 2025	Assessment of the site remains unchanged as Amber, this is a site previously in agricultural use with the potential for historic contamination and planning conditions will be required.
Contaminated Land RAG Assessment 2023	Amber
Contaminated Land Officer Comments 2023	This is a site previously in agricultural use with the potential for historic contamination and planning conditions will be required.
Contaminated Land RAG Assessment 2021	-
Contaminated Land Officer Comments 2021	-
Overall Suitability Score	Red
Further constraints	-
Agricultural Land Classification Grade 1	0
Agricultural Land Classification Grade 2	100
Agricultural Land Classification Grade 3	0
Agricultural Land Classification Grade 4	0
Agricultural Land Classification Non Agricultural	0
Agricultural Land Classification Urban	0

Source Protection Zone	0
Highways England Zones	South West
Available	-
Is the site controlled by a developer or landowner who has expressed an intention to develop?	The site was submitted by the landowner and/or site promoter who has confirmed that the site is available for development in the timescales indicated.
Are there known legal or ownership impediments to development?	No
Is there planning permission to develop the site?	No relevant recent planning history
When will the site be available for development?	0-5 Years
Available RAG	Green
Achievable	-
Is there a reasonable prospect that the site will be developed?	The land has been promoted by the landowner and or developer and is known to be available for development. The site has a low existing use value and residential development is likely to be economically viable at an appropriate density.
Achievable RAG	Green
Capacity	-
Prevailing Density (weighted) (dwellings per ha)	30
Residential capacity at prevailing density	152
Estimated employment space (m2)	0
Estimated start date	0-5 Years
Estimated annual build-out rate (pa)	40-75
Development completion timescales (years)	0-5 Years

## Land at Foxton Railway Station assessment



A map of Land at Foxton Railway Station

Site information	-
Site ID	115171
HELAA Site ID	40084
Suitable Site Area (ha)	95.9931105973969
Ward/Parish	Foxton
Greenfield or Previously Developed?	Greenfield
Category of site	Dispersal: Villages / Transport Corridor
Category of settlement	Within or adjacent to group village
Current use(s)	Agricultural Land / Building, Infrastructure
Proposed development	Mixed use
Proposed employment floorspace (m2)	5000-10000
Proposed residential capacity	1500-2000
Suitability	-
Adopted Development Plan Policies RAG 2025	Amber

Adopted Development Plan Policies Comment 2025	Development of the site has some potential policy constraints, but these could be overcome through the planning application process.
Flood Risk RAG Assessment 2025	Amber
Flood Risk Officer Comment 2025	Flood Zones: Partially in Flood Zone 2 (2%). Partially in Flood Zone 3 (4%). Surface Water Flooding: 1% lies in a 1 in 30 year event. 1% lies in a 1 in 100 year event. 4% lies in a 1 in 1000 year event.
Flood Risk RAG Assessment 2023	-
Flood Risk Officer Comment 2023	-
Flood Risk RAG Assessment 2021	Amber
Flood Risk Officer Comment 2021	The site is within flood zones 3a or 3b.
Landscape RAG Assessment 2025	-
Landscape Comment 2025	-
Landscape RAG Assessment 2023	-
Landscape Comment 2023	-
Landscape RAG Assessment 2021	Red
Landscape Comment 2021	The site is located to the north of the village of Foxton. Development upon this site would be an encroachment into the countryside and have a significant adverse effect upon the rural local landscape character and existing gateway into the village of Foxton. Minor development could be accommodated to the south east of the site but significant landscape mitigation works would be required to enhance the new village edge.
Biodiversity and Geodiversity RAG Assessment 2025	-
Biodiversity and Geodiversity Officer Comments 2025	-
Biodiversity and Geodiversity Guideline Comments 2025	-
Biodiversity and Geodiversity RAG Assessment 2023	Amber
Biodiversity and Geodiversity Officer Comments 2023	A Preliminary Ecological Appraisal has been submitted. This identifies that deciduous woodland Priority habitat is present within the site, as well as other habitat with ecological value. The assessment identifies the need for further surveys for Great Crested Newt, bats, Water Vole, Otter, badger and reptiles. The development may still cause visitor pressure on nearby SSSI's. Therefore, the further information has not changed the RAG scoring of the site.
Biodiversity and Geodiversity Guideline Comments 2023	Development of the site may have a detrimental impact on a designated site, or those with a regional or local protection but the impact could be reasonably mitigated or compensated.

Biodiversity and Geodiversity RAG Assessment 2021	Amber
Biodiversity and Geodiversity Officer Comments 2021	All new housing developments will require assessment of increased visitor pressure on nearby SSSI. Priority habitats within the site include deciduous woodland, with a ditch lying adjacent to the western boundary; however, there are grassland, hedges and wooded boundaries on site that are also likely to have ecological value.
Biodiversity and Geodiversity Guideline Comments 2021	Development of the site may have a detrimental impact on a designated site, or those with a regional or local protection but the impact could be reasonably mitigated or compensated.
Policy RAG Rating 2025	-
Policy Officer Comment 2025	-
Policy RAG Rating 2023	-
Policy Officer Comment 2023	-
Policy RAG Rating 2021	Green
Policy Officer Comments 2021	Site is not on protected open space designation. Any impact of the proposed development could be reasonably mitigated or compensated.
Historic Environment RAG Assessment 2025	-
Historic Environment Comments 2025	-
Historic Environment RAG Assessment 2023	Amber
Historic Environment Comments 2023	The additional information includes an initial Heritage Appraisal which concludes that there is potential for the development of certain areas of the site to cause harm to the significance of heritage assets and care will be required to mitigate this harm. It further states that based on the information available this harm would be less than substantial although it is not possible to define any more precisely the levels of impact at this stage until more detail is available. Given this lack of certainty and the need for mitigation of harm the Amber rating remains appropriate.
Historic Environment RAG Assessment 2021	Amber
Historic Environment Comments 2021	The site is adjacent to a Scheduled Monument site so care needed. Development of the site could have a detrimental impact on a designated or non-designated heritage asset or the setting of a designated or non-designated heritage asset, but the impact could be reasonably mitigated.
Archaeology RAG Assessment 2025	-
Archaeology Officer Comment 2025	-
Archaeology RAG Assessment 2023	Red

Archaeology Officer Comment 2023	The additional information provided within the Geophysical Survey aligns with information held on the Historic Environment Record. However the Desk Based Assessment does not take account of limitations of magnetometer survey and does not acknowledge significance of Roman landscape. Continuity with designated assets indicates that assets should be considered under footnote 68. Therefore based on the additional information and the response above, the assessment score remains as red.
Archaeology RAG Assessment 2021	Red
Archaeology Officer Comment 2021	Contains extensive cropmarks of Roman settlement, part of the same complex as the scheduled Brown Spinney Roman settlement and of demonstrably equivalent status to designated heritage assets
Accessibility RAG Assessment 2025 - Automated	Amber
Accessibility RAG Assessment 2025 - Officer Verified	-
Accessibility Comment 2025	Adequate accessibility to key local services, transport, and employment opportunities. Proposed development would require accompanying primary school and community centre
Site Access RAG Assessment 2025	-
Site Access Officer Comment 2025	-
Site Access RAG Assessment 2023	Amber
Site Access Officer Comment 2023	Based on the new information provided, the site access assessment remains unchanged. The proposed site is acceptable in principle, subject to detailed design at a planning application stage.
Site Access RAG Assessment 2021	Amber
Site Access Officer Comment 2021	The proposed site is acceptable in principle subject to detailed design.
Transport and Roads RAG Assessment 2025	Amber
Transport and Roads Guideline Comments 2025	Based on the updated information, the overall site score remains unchanged. Site is adjacent to Foxton Station. The site will need to provide high-quality local non-motorised user routes and passenger transport routes linking to Foxton Station and Cambridge, making significant contributions to the delivery of the Melbourn Greenway. Development of the site will be dependent on significant improvements to the A10 and its junction with the M11 including delivery of a bridge (or bridges) over the railway. Will require a robust Travel Plan.
Transport and Roads RAG Assessment 2023	Amber

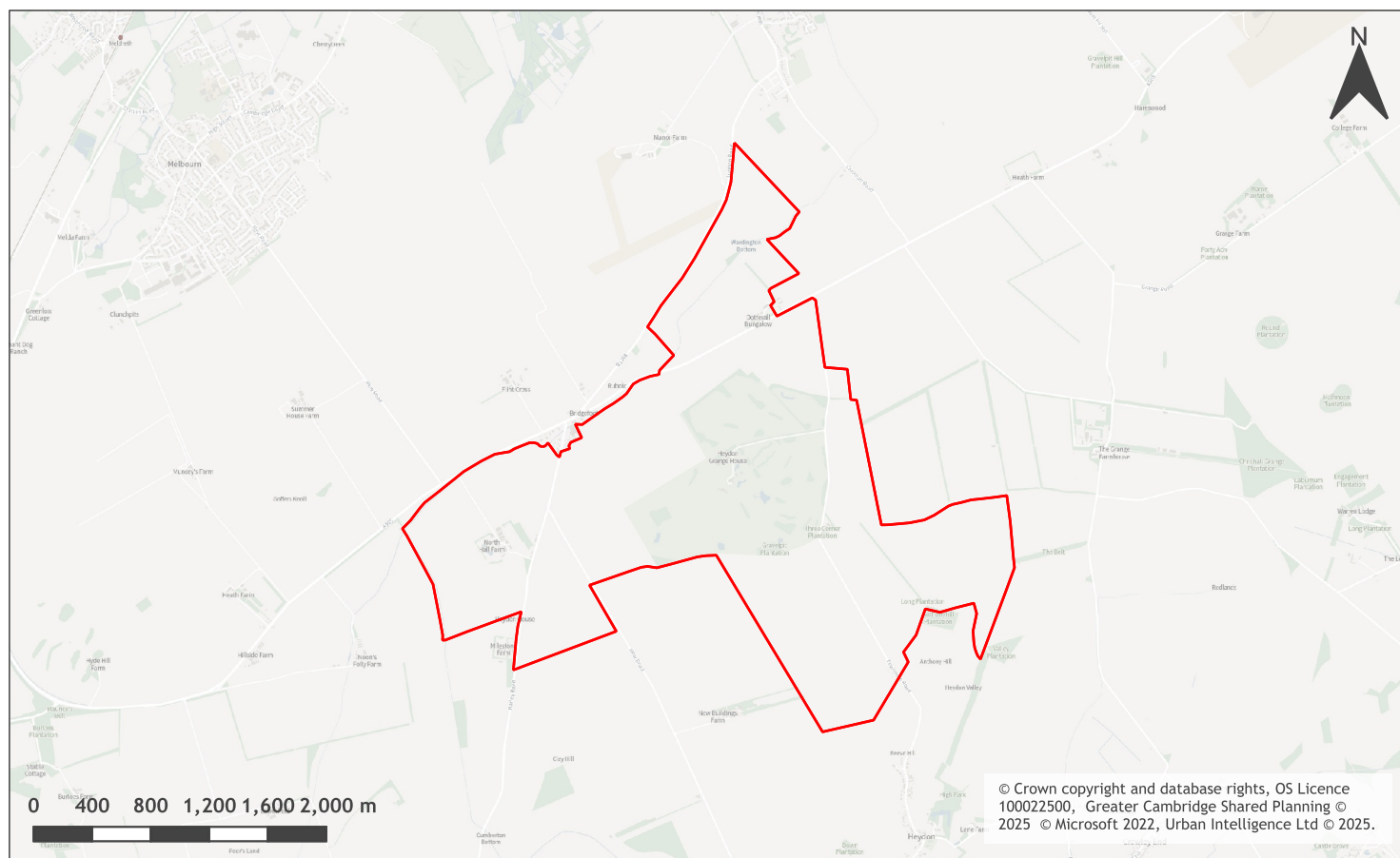
Transport and Roads Guideline Comments 2023	Site is adjacent to Foxton Station. Based on the new information, the assessment score has been amended to amber. The site will need to provide high quality local non motorised user routes and passenger transport routes linking to the station and Cambridge, making significant contributions to the delivery of the Melbourn Greenway. The site will be dependent on significant improvements to the A10 and its junction with the M11 including delivery of a bridge (or bridges) over the railway. Will require a robust Travel Plan.
Transport and Roads RAG Assessment 2021	Red
Transport and Roads Guideline Comments 2021	Transport Assessment and Travel Plan required.
Noise, Vibration, Odour and Light Pollution RAG Assessment 2025	-
Noise, Vibration, Odour and Light Pollution Guideline Comments 2025	-
Noise, Vibration, Odour and Light Pollution RAG Assessment 2023	-
Noise, Vibration, Odour and Light Pollution Guideline Comments 2023	New information provided has not changed the assessment. Detailed site specific assessments will be required for any future planning applications at this location.
Noise, Vibration, Odour and Light Pollution RAG Assessment 2021	Amber
Noise, Vibration, Odour and Light Pollution Guideline Comments 2021	The proposed site will be affected by road traffic noise from nearby main roads and by railway noise (and possibly vibration) but is acceptable in principle subject to appropriate detailed design considerations and mitigation.
AQMA RAG Assessment 2025	-
Air Quality Officer Comment 2025	-
AQMA RAG Assessment 2023	Amber
Air Quality Officer Comment 2023	The additional information provided does not significantly affect air quality issues or mitigation. Therefore the assessment of the site remains unchanged since the original assessment. The site is located outside an AQMA but there is potential for an impact on AQMA which will require inherent / intrinsic designed in Air Quality mitigation.
AQMA RAG Assessment 2021	Amber
Air Quality Officer Comment 2021	Large site and lots of residential units - potential for AQMA traffic impact without mitigation. Site does not lie within an AQMA.
Contaminated Land RAG Assessment 2025	-
Contaminated Land Officer Comments 2025	-
Contaminated Land RAG Assessment 2023	Amber

Contaminated Land Officer Comments 2023	The additional information provided does not significantly affect environmental health issues or mitigation. Therefore the assessment of the site remains unchanged since the original assessment as this is a site previously in use for agriculture and agricultural buildings with the potential for historic contamination and planning conditions will be required.
Contaminated Land RAG Assessment 2021	Amber
Contaminated Land Officer Comments 2021	Previous agricultural buildings and land use. Potential for historic contamination, conditions required.
Overall Suitability Score	Red
Further constraints	-
Agricultural Land Classification Grade 1	0
Agricultural Land Classification Grade 2	100
Agricultural Land Classification Grade 3	0
Agricultural Land Classification Grade 4	0
Agricultural Land Classification Non Agricultural	0
Agricultural Land Classification Urban	0
Source Protection Zone	0
Highways England Zones	South West
Available	-
Is the site controlled by a developer or landowner who has expressed an intention to develop?	The site was submitted by the landowner and/or site promoter who has confirmed that the site is available for development in the timescales indicated.
Are there known legal or ownership impediments to development?	No
Is there planning permission to develop the site?	No, Application pending for erection of 1 No. Self-Build Dwelling and Garage. (25/01684/FUL)
When will the site be available for development?	0 to 5 years
Available RAG	Amber
Achievable	-
Is there a reasonable prospect that the site will be developed?	The land has been promoted by the landowner and or developer and is known to be available for development. The site has a low existing use value and development is likely to be economically viable
Achievable RAG	Green
Capacity	-
Prevailing Density (weighted) (dwellings per ha)	30



Residential capacity at prevailing density	1440
Estimated employment space (m2)	5000-10000
Estimated start date	0-5 Years
Estimated annual build-out rate (pa)	145
Development completion timescales (years)	6-10 Years

## Heydon Grange Golf Club, Heydon assessment



A map of Heydon Grange Golf Club, Heydon

Site information	-
Site ID	115213
HELAA Site ID	40046
Suitable Site Area (ha)	647.550163896242
Ward/Parish	Foxton
Greenfield or Previously Developed?	Greenfield
Category of site	New settlement
Category of settlement	Not within or adjacent to an existing settlement
Current use(s)	Agricultural Land / Building, Recreation, Residential, Woodland / Orchard
Proposed development	Residential
Proposed employment floorspace (m2)	0
Proposed residential capacity	10000-10497
Suitability	-
Adopted Development Plan Policies RAG 2025	Amber

Adopted Development Plan Policies Comment 2025	Development of the site has some potential policy constraints, but these could be overcome through the planning application process.
Flood Risk RAG Assessment 2025	Amber
Flood Risk Officer Comment 2025	Flood Zone: Partly in Flood Zone 3 (2%); Surface Water Flooding: 1% lies in a 1 in 30 year event, 1% lies in a 1 in 100 year event and 2% lies in a 1 in 1000 year event.
Flood Risk RAG Assessment 2023	-
Flood Risk Officer Comment 2023	-
Flood Risk RAG Assessment 2021	-
Flood Risk Officer Comment 2021	-
Landscape RAG Assessment 2025	Red
Landscape Comment 2025	Having considered the submitted information, the site has been scored Red. The site is in the Southern Chalk Hills Landscape Character Area, which is a distinctive, high and undulating landscape with steep sided valleys and long views from high points. The site appears to include an area of rare chalkland landscape around Heydon. Development of such a large scale would irreversibly damage the landscape character and views and would not be acceptable in this location.
Landscape RAG Assessment 2023	-
Landscape Comment 2023	-
Landscape RAG Assessment 2021	-
Landscape Comment 2021	-
Biodiversity and Geodiversity RAG Assessment 2025	Amber
Biodiversity and Geodiversity Officer Comments 2025	Having considered the submitted information, the site has been assessed as Amber. A development of the size and scale described would meet the criteria set out by Natural England that would raise concerns regarding impacts to statutory protected sites. This includes increases in recreational pressure on nearby SSSIs. The proposed site contains priority habitat which will require assessment and possible compensation if removed. Heydon Pit and RSV CWS, which supports at least 6 calcareous indicator species, lies in proximity to the site and would require bespoke mitigation or compensation to remove any risk of harm.
Biodiversity and Geodiversity Guideline Comments 2025	Development of the site may have a detrimental impact on a designated site, or those with a regional or local protection, but the impact could be reasonably mitigated or compensated.
Biodiversity and Geodiversity RAG Assessment 2023	-

Biodiversity and Geodiversity Officer Comments 2023	-
Biodiversity and Geodiversity Guideline Comments 2023	-
Biodiversity and Geodiversity RAG Assessment 2021	-
Biodiversity and Geodiversity Officer Comments 2021	-
Biodiversity and Geodiversity Guideline Comments 2021	-
Policy RAG Rating 2025	Green
Policy Officer Comment 2025	Site is not on protected open space designation. Any impact of the proposed development could be reasonably mitigated or compensated. the site is wholly outside an open space designation
Policy RAG Rating 2023	-
Policy Officer Comment 2023	-
Policy RAG Rating 2021	Green
Policy Officer Comments 2021	Site is not on protected open space designation. Any impact of the proposed development could be reasonably mitigated or compensated.
Historic Environment RAG Assessment 2025	Red
Historic Environment Comments 2025	Large site on very open chalk land rising to Heydon village Conservation Area crossed by Bran Ditch Scheduled Monument and historic landscape features. Concept plan indicates substantial harm to Scheduled Monument. High level of harm through loss of important landscape setting to Heydon Conservation Area and multiple Listed Buildings. Harm cannot be mitigated with proposed quantum. Development surrounding grade II listed barn at Heydon Grange in centre of site results in high 'less than substantial harm' from loss of rural setting. Development of the site would cause substantial harm, or severe or significant "Less than substantial harm" to a designated heritage asset or the setting of a designated heritage asset which cannot be reasonably mitigated.
Historic Environment RAG Assessment 2023	-
Historic Environment Comments 2023	-
Historic Environment RAG Assessment 2021	-
Historic Environment Comments 2021	-
Archaeology RAG Assessment 2025	Red

Archaeology Officer Comment 2025	The site is crossed by the nationally important Bran Ditch, an Anglo-Saxon linear boundary designated as a Scheduled Monument. The site is located in a rich archaeological landscape of prehistoric and Roman date. It is bisected by the Roman road Harcamlow Way, which is nationally important and designated as a scheduled monument. Development would have a detrimental impact on this heritage asset which cannot be mitigated.
Archaeology RAG Assessment 2023	-
Archaeology Officer Comment 2023	-
Archaeology RAG Assessment 2021	-
Archaeology Officer Comment 2021	-
Accessibility RAG Assessment 2025 - Automated	Red
Accessibility RAG Assessment 2025 - Officer Verified	Green
Accessibility Comment 2025	Inadequate accessibility to key local services, transport, and employment opportunities. Proposed development would require accompanying primary school, secondary school, local centre/employment provision, community centre, health centre and district centre/superstore
Site Access RAG Assessment 2025	Amber
Site Access Officer Comment 2025	The site has been scored as Amber based on the information submitted for consideration. The site is acceptable in principle, subject to greater detail and consultation. A significant level of infrastructure will be required outside the site boundary to encourage more sustainable transport links.
Site Access RAG Assessment 2023	-
Site Access Officer Comment 2023	-
Site Access RAG Assessment 2021	-
Site Access Officer Comment 2021	-
Transport and Roads RAG Assessment 2025	Amber

Transport and Roads Guideline Comments 2025	Having considered the submitted information, the site has been scored Amber. The A505 is a heavily trafficked road. The junctions around the site will be heavily impacted by this site. There are no sustainable transport links to existing sustainable transport infrastructure. Given the scale and location of the site, it will mostly be a car-dependent development. Previously, the County Council were considering a scheme along the A505 corridor, which would have assisted in making this site more feasible, but this scheme has been put on hold. This means there has to be more of a focus on non-motorised modes, which could be very difficult to facilitate due to land constraints.
Transport and Roads RAG Assessment 2023	-
Transport and Roads Guideline Comments 2023	-
Transport and Roads RAG Assessment 2021	-
Transport and Roads Guideline Comments 2021	-
Noise, Vibration, Odour and Light Pollution RAG Assessment 2025	Amber
Noise, Vibration, Odour and Light Pollution Guideline Comments 2025	The proposed site will be affected by road traffic noise from nearby main roads, but is acceptable in principle, subject to appropriate detailed design considerations and mitigation.
Noise, Vibration, Odour and Light Pollution RAG Assessment 2023	-
Noise, Vibration, Odour and Light Pollution Guideline Comments 2023	-
Noise, Vibration, Odour and Light Pollution RAG Assessment 2021	-
Noise, Vibration, Odour and Light Pollution Guideline Comments 2021	-
AQMA RAG Assessment 2025	Amber
Air Quality Officer Comment 2025	The site has been scored as Amber based on the information provided. The site does not fall within an Air Quality Management Area (AQMA). Given the scale of the scheme, inherent/intrinsic designed-in air quality mitigation measures may be necessary to offset impacts on designated AQMAs.
AQMA RAG Assessment 2023	-
Air Quality Officer Comment 2023	-
AQMA RAG Assessment 2021	-
Air Quality Officer Comment 2021	-

Contaminated Land RAG Assessment 2025	Amber
Contaminated Land Officer Comments 2025	Brownfield site, contamination expected, conditions required.
Contaminated Land RAG Assessment 2023	-
Contaminated Land Officer Comments 2023	-
Contaminated Land RAG Assessment 2021	-
Contaminated Land Officer Comments 2021	-
Overall Suitability Score	Red
Further constraints	-
Agricultural Land Classification Grade 1	0
Agricultural Land Classification Grade 2	84.23
Agricultural Land Classification Grade 3	15.77
Agricultural Land Classification Grade 4	0
Agricultural Land Classification Non Agricultural	0
Agricultural Land Classification Urban	0
Source Protection Zone	4.86
Highways England Zones	South West
Available	-
Is the site controlled by a developer or landowner who has expressed an intention to develop?	The site was submitted by the landowner and/or site promoter who has confirmed that the site is available for development in the timescales indicated.
Are there known legal or ownership impediments to development?	No
Is there planning permission to develop the site?	Yes, Planning permission granted for installation of 5 no. EVC bays. (22/03297/FUL), Planning permission granted for change of use of the site from agriculture to the mixed use for agriculture and for the storage, packing and distribution of eggs. (23/01726/FUL), Application pending for change of use from dance studio to dentistry laboratory. (25/02771/FUL)
When will the site be available for development?	0 to 5 years
Available RAG	Amber
Achievable	-
Is there a reasonable prospect that the site will be developed?	The land has been promoted by the landowner and or developer and is known to be available for development. The site has a low existing use value and development is likely to be economically viable

Achievable RAG	Green
Capacity	-
Prevailing Density (weighted) (dwellings per ha)	30
Residential capacity at prevailing density	9713
Estimated employment space (m2)	0
Estimated start date	6-10 Years
Estimated annual build-out rate (pa)	225-230
Development completion timescales (years)	11-15 years



## Land West of Challis Close, Foxton assessment



### A map of Land West of Challis Close, Foxton

Site information	-
Site ID	115221
HELAA Site ID	40159
Suitable Site Area (ha)	0.547143283079442
Ward/Parish	Foxton
Greenfield or Previously Developed?	Greenfield
Category of site	Dispersal: Villages / Transport Corridor
Category of settlement	Within or adjacent to group village
Current use(s)	Agricultural Land / Building
Proposed development	Non-Residential
Proposed employment floorspace (m2)	2000-3500
Proposed residential capacity	0
Suitability	-
Adopted Development Plan Policies RAG 2025	Amber

Adopted Development Plan Policies Comment 2025	Development of the site has some potential policy constraints, but these could be overcome through the planning application process.
Flood Risk RAG Assessment 2025	Amber
Flood Risk Officer Comment 2025	Flood zone: Wholly in Flood Zone 1; Surface water flooding: 12% lies in a 1 in 1000 year event
Flood Risk RAG Assessment 2023	-
Flood Risk Officer Comment 2023	-
Flood Risk RAG Assessment 2021	Amber
Flood Risk Officer Comment 2021	The site is within flood zone 2 (taking into account climate change) and/or is within an area at high, medium or low risk from surface water flooding.
Landscape RAG Assessment 2025	Amber
Landscape Comment 2025	The proposals outline a change in use from residential to employment. The previously proposed residential use was supported in landscape terms, but we are more cautious in support for an employment use. Conservative height and scale must be adopted within any design to limit impact on neighbouring residential development. Developable area will likely be constrained by existing trees, as well as the additional planting required to buffer a larger building(s) from the surrounding area.
Landscape RAG Assessment 2023	-
Landscape Comment 2023	-
Landscape RAG Assessment 2021	Green
Landscape Comment 2021	Development upon this site would have a negligible impact to the landscape settlement character. Landscape enhancement measures to include the following: the development to reflect the existing settlement rural characteristics, existing boundary planting to be protected and retained and a new landscape buffer to be included to the south of the site.
Biodiversity and Geodiversity RAG Assessment 2025	Amber
Biodiversity and Geodiversity Officer Comments 2025	Based on the new information provided, the assessment score has not changed. No additional ecology information has been provided and as such the previous assessment still applies.
Biodiversity and Geodiversity Guideline Comments 2025	Development of the site may have a detrimental impact on a designated site, or those with a regional or local protection but the impact could be reasonably mitigated or compensated.
Biodiversity and Geodiversity RAG Assessment 2023	-
Biodiversity and Geodiversity Officer Comments 2023	-

Biodiversity and Geodiversity Guideline Comments 2023	-
Biodiversity and Geodiversity RAG Assessment 2021	-
Biodiversity and Geodiversity Officer Comments 2021	Recreational impacts on SSSIs to be considered. Scattered trees and boundary habitats may qualify as Habitat of Principal Importance/priority habitat and/or be of high ecological importance. Otherwise, habitats within the site likely to be of low ecological value.
Biodiversity and Geodiversity Guideline Comments 2021	Development of the site may have a detrimental impact on a designated site, or those with a regional or local protection but the impact could be reasonably mitigated or compensated.
Policy RAG Rating 2025	Green
Policy Officer Comment 2025	Site is not on protected open space designation. Any impact of the proposed development could be reasonably mitigated or compensated. the site is wholly outside an open space designation
Policy RAG Rating 2023	-
Policy Officer Comment 2023	-
Policy RAG Rating 2021	Green
Policy Officer Comments 2021	Site is not on protected open space designation. Any impact of the proposed development could be reasonably mitigated or compensated.
Historic Environment RAG Assessment 2025	Amber
Historic Environment Comments 2025	Based on the new information provided, the assessment score has not changed. This site sits outside but between two conservation areas and to the west of Challis Close. Any development of more than two storeys has the potential to harm the setting of the conservation areas but a R&D building of an appropriate scale, well screened might be possible. Development of the site could have a detrimental impact on a designated or non-designated heritage asset or the setting of a designated or non-designated heritage asset, but the impact could be reasonably mitigated.
Historic Environment RAG Assessment 2023	-
Historic Environment Comments 2023	-
Historic Environment RAG Assessment 2021	Amber
Historic Environment Comments 2021	The site is close to the boundary of the Foxton Conservation Area which wraps around this site and the adjacent building to the east, development of the site could have a detrimental impact on the Conservation Area, but the impact could be reasonably mitigated.
Archaeology RAG Assessment 2025	Amber
Archaeology Officer Comment 2025	Excavations to the immediate east identified enclosures of middle Bronze Age date. Archaeological investigations would be necessary in advance of development.
Archaeology RAG Assessment 2023	-

Archaeology Officer Comment 2023	-
Archaeology RAG Assessment 2021	Amber
Archaeology Officer Comment 2021	Archaeological investigation in advance of development at Challis Close identified Bronze Age enclosures.
Accessibility RAG Assessment 2025 - Automated	Amber
Accessibility RAG Assessment 2025 - Officer Verified	-
Accessibility Comment 2025	Adequate accessibility to key local services, transport, and employment opportunities. Proposed development would not require delivery of accompanying key services
Site Access RAG Assessment 2025	Red
Site Access Officer Comment 2025	Based on the additional information, the assessment score remains unchanged as Red. The site does not link to the adopted public highway and is therefore inaccessible to highway users.
Site Access RAG Assessment 2023	-
Site Access Officer Comment 2023	-
Site Access RAG Assessment 2021	Red
Site Access Officer Comment 2021	The proposed site does not to have a direct link to the adopted public highway.
Transport and Roads RAG Assessment 2025	Amber
Transport and Roads Guideline Comments 2025	Any potential impact on the functioning of trunk roads and/or local roads could be reasonably mitigated. The development would need to provide mitigation to reduce the vehicle impact and encourage active travel and public transport use. A Transport Assessment and a Travel Plan will be required.
Transport and Roads RAG Assessment 2023	-
Transport and Roads Guideline Comments 2023	-
Transport and Roads RAG Assessment 2021	Amber
Transport and Roads Guideline Comments 2021	Any potential impact on the functioning of trunk roads and/or local roads could be reasonably mitigated.
Noise, Vibration, Odour and Light Pollution RAG Assessment 2025	Amber
Noise, Vibration, Odour and Light Pollution Guideline Comments 2025	The site is capable of being developed to provide healthy internal and external environments in regard to noise / vibration / odour/ Light Pollution after careful site layout, design and mitigation.

Noise, Vibration, Odour and Light Pollution RAG Assessment 2023	-
Noise, Vibration, Odour and Light Pollution Guideline Comments 2023	-
Noise, Vibration, Odour and Light Pollution RAG Assessment 2021	Amber
Noise, Vibration, Odour and Light Pollution Guideline Comments 2021	The proposed site will be affected by noise from nearby industrial/commercial activities but is acceptable in principle subject to appropriate detailed design considerations and mitigation.
AQMA RAG Assessment 2025	Green
Air Quality Officer Comment 2025	The assessment score remains as Green based on the additional information. The site does not lie within an Air Quality Management Area (AQMA) and therefore will have minimal traffic impact on designated AQMAs.
AQMA RAG Assessment 2023	-
Air Quality Officer Comment 2023	-
AQMA RAG Assessment 2021	Green
Air Quality Officer Comment 2021	Site does not lie within an AQMA. Minimal traffic impact on AQMA.
Contaminated Land RAG Assessment 2025	Amber
Contaminated Land Officer Comments 2025	The assessment score has not changed and remains amber. This is a Brownfield site and contamination is expected, conditions will be required.
Contaminated Land RAG Assessment 2023	-
Contaminated Land Officer Comments 2023	-
Contaminated Land RAG Assessment 2021	Amber
Contaminated Land Officer Comments 2021	Brownfield site, contamination expected, conditions required
Overall Suitability Score	Red
Further constraints	-
Agricultural Land Classification Grade 1	0
Agricultural Land Classification Grade 2	100
Agricultural Land Classification Grade 3	0
Agricultural Land Classification Grade 4	0

Agricultural Land Classification Non Agricultural	0
Agricultural Land Classification Urban	0
Source Protection Zone	0
Highways England Zones	South West
Available	-
Is the site controlled by a developer or landowner who has expressed an intention to develop?	The site was submitted by the landowner and/or site promoter who has confirmed that the site is available for development in the timescales indicated.
Are there known legal or ownership impediments to development?	No
Is there planning permission to develop the site?	No relevant recent planning history
When will the site be available for development?	0 to 5 years
Available RAG	Amber
Achievable	-
Is there a reasonable prospect that the site will be developed?	The land has been promoted by the landowner and or developer and is known to be available for development. The site has a low existing use value and development is likely to be economically viable
Achievable RAG	Green
Capacity	-
Prevailing Density (weighted) (dwellings per ha)	30
Residential capacity at prevailing density	16
Estimated employment space (m2)	2000-3500
Estimated start date	0-5 Years
Estimated annual build-out rate (pa)	-
Development completion timescales (years)	0-5 Years

## College Farm, Barrington Road, Foxton assessment



A map of College Farm, Barrington Road, Foxton

Site information	-
Site ID	115809
HELAA Site ID	40031
Suitable Site Area (ha)	1.09243093054308
Ward/Parish	Foxton
Greenfield or Previously Developed?	Greenfield and Previously Developed Land
Category of site	Dispersal: Villages
Category of settlement	Not within or adjacent to an existing settlement
Current use(s)	-
Proposed development	Mixed Use
Proposed employment floorspace (m2)	2500
Proposed residential capacity	30
Suitability	-
Adopted Development Plan Policies RAG 2025	Amber

Adopted Development Plan Policies Comment 2025	Development of the site has some potential policy constraints, but these could be overcome through the planning application process.
Flood Risk RAG Assessment 2025	Amber
Flood Risk Officer Comment 2025	Flood Zone: Wholly in Flood Zone 1. Surface Water Flooding: 3% lies in a 1 in 100 year event. 18% lies in a 1 in 1000 year event
Flood Risk RAG Assessment 2023	-
Flood Risk Officer Comment 2023	-
Flood Risk RAG Assessment 2021	Amber
Flood Risk Officer Comment 2021	The site is within flood zone 2 (taking into account climate change) and/or is within an area at high, medium or low risk from surface water flooding.
Landscape RAG Assessment 2025	-
Landscape Comment 2025	-
Landscape RAG Assessment 2023	-
Landscape Comment 2023	-
Landscape RAG Assessment 2021	Red
Landscape Comment 2021	Development of residential units upon this site would have a significant adverse impact to the rural characteristics of Foxton, its gateway and an encroachment of urban development into the countryside.
Biodiversity and Geodiversity RAG Assessment 2025	-
Biodiversity and Geodiversity Officer Comments 2025	-
Biodiversity and Geodiversity Guideline Comments 2025	-
Biodiversity and Geodiversity RAG Assessment 2023	-
Biodiversity and Geodiversity Officer Comments 2023	-
Biodiversity and Geodiversity Guideline Comments 2023	-
Biodiversity and Geodiversity RAG Assessment 2021	Amber



Biodiversity and Geodiversity Officer Comments 2021	All new housing developments will require assessment of increased visitor pressure on nearby SSSI. There are no other apparent priority habitats within the site; however, there are grasslands, introduced shrub, wooded areas, hedges, and wooded boundaries on site that are likely to have ecological value. Applications may find provision of a 10% net gain in biodiversity difficult within their red line boundaries and may need to find offsite compensation to comply with up-coming National legislation and developing local policies.
Biodiversity and Geodiversity Guideline Comments 2021	Development of the site may have a detrimental impact on a designated site, or those with a regional or local protection but the impact could be reasonably mitigated or compensated.
Policy RAG Rating 2025	-
Policy Officer Comment 2025	-
Policy RAG Rating 2023	-
Policy Officer Comment 2023	-
Policy RAG Rating 2021	Green
Policy Officer Comments 2021	Site is not on protected open space designation. Any impact of the proposed development could be reasonably mitigated or compensated.
Historic Environment RAG Assessment 2025	-
Historic Environment Comments 2025	-
Historic Environment RAG Assessment 2023	-
Historic Environment Comments 2023	-
Historic Environment RAG Assessment 2021	Green
Historic Environment Comments 2021	Development of the site would have either a neutral or positive impact, but importantly not have a detrimental impact on any designated or non-designated heritage assets.
Archaeology RAG Assessment 2025	-
Archaeology Officer Comment 2025	-
Archaeology RAG Assessment 2023	-
Archaeology Officer Comment 2023	-
Archaeology RAG Assessment 2021	Amber
Archaeology Officer Comment 2021	Located in an area of extensive Roman settlement
Accessibility RAG Assessment 2025 - Automated	Amber
Accessibility RAG Assessment 2025 - Officer Verified	-

Accessibility Comment 2025	Adequate accessibility to key local services, transport, and employment opportunities.
Site Access RAG Assessment 2025	-
Site Access Officer Comment 2025	-
Site Access RAG Assessment 2023	-
Site Access Officer Comment 2023	-
Site Access RAG Assessment 2021	Amber
Site Access Officer Comment 2021	The proposed development is lacking in pedestrian connectivity and improvements will be required to make the development acceptable to the Local Highway Authority.
Transport and Roads RAG Assessment 2025	-
Transport and Roads Guideline Comments 2025	-
Transport and Roads RAG Assessment 2023	-
Transport and Roads Guideline Comments 2023	-
Transport and Roads RAG Assessment 2021	Amber
Transport and Roads Guideline Comments 2021	Any potential impact on the functioning of trunk roads and/or local roads could be reasonably mitigated.
Noise, Vibration, Odour and Light Pollution RAG Assessment 2025	-
Noise, Vibration, Odour and Light Pollution Guideline Comments 2025	-
Noise, Vibration, Odour and Light Pollution RAG Assessment 2023	-
Noise, Vibration, Odour and Light Pollution Guideline Comments 2023	-
Noise, Vibration, Odour and Light Pollution RAG Assessment 2021	Amber
Noise, Vibration, Odour and Light Pollution Guideline Comments 2021	The site is capable of being developed to provide healthy internal and external environments in regard to noise / vibration/ odour/ Light Pollution after careful site layout, design and mitigation.
AQMA RAG Assessment 2025	-
Air Quality Officer Comment 2025	-
AQMA RAG Assessment 2023	-

Air Quality Officer Comment 2023	-
AQMA RAG Assessment 2021	Green
Air Quality Officer Comment 2021	Site does not lie within an AQMA. Minimal traffic impact on AQMA.
Contaminated Land RAG Assessment 2025	-
Contaminated Land Officer Comments 2025	-
Contaminated Land RAG Assessment 2023	-
Contaminated Land Officer Comments 2023	-
Contaminated Land RAG Assessment 2021	Amber
Contaminated Land Officer Comments 2021	Brownfield site, contamination expected, conditions required
Overall Suitability Score	Red
Further constraints	-
Agricultural Land Classification Grade 1	0
Agricultural Land Classification Grade 2	100
Agricultural Land Classification Grade 3	0
Agricultural Land Classification Grade 4	0
Agricultural Land Classification Non Agricultural	0
Agricultural Land Classification Urban	0
Source Protection Zone	0
Highways England Zones	South West
Available	-
Is the site controlled by a developer or landowner who has expressed an intention to develop?	The site was submitted by the landowner and/or site promoter who has confirmed that the site is available for development in the timescales indicated.
Are there known legal or ownership impediments to development?	Yes - Restrictive covenant (partially lifted).
Is there planning permission to develop the site?	No relevant recent planning history
When will the site be available for development?	0-5 Years
Available RAG	Amber

Achievable	-
Is there a reasonable prospect that the site will be developed?	The land has been promoted by the landowner and or developer and is known to be available for development. The site has a low existing use value and mixed-use development is likely to be economically viable at an appropriate density.
Achievable RAG	Green
Capacity	-
Prevailing Density (weighted) (dwellings per ha)	30
Residential capacity at prevailing density	29
Estimated employment space (m2)	2500
Estimated start date	0-5 Years
Estimated annual build-out rate (pa)	40-75
Development completion timescales (years)	0-5 Years

## Land at Shepreth Road, Foxton assessment



A map of Land at Shepreth Road, Foxton

Site information	-
Site ID	115812
HELAA Site ID	40495
Suitable Site Area (ha)	4.19111364859521
Ward/Parish	Foxton
Greenfield or Previously Developed?	Greenfield
Category of site	Dispersal: Villages / Transport Corridor
Category of settlement	Within or adjacent to Group Village
Current use(s)	-
Proposed development	Residential
Proposed employment floorspace (m2)	0
Proposed residential capacity	50
Suitability	-
Adopted Development Plan Policies RAG 2025	Amber

Adopted Development Plan Policies Comment 2025	Development of the site has some potential policy constraints, but these could be overcome through the planning application process.
Flood Risk RAG Assessment 2025	Amber
Flood Risk Officer Comment 2025	Flood Zone: Wholly in Flood Zone 1. Surface Water Flooding: 1% lies in a 1 in 100 year event. 2% lies in a 1 in 1000 year event
Flood Risk RAG Assessment 2023	-
Flood Risk Officer Comment 2023	-
Flood Risk RAG Assessment 2021	Amber
Flood Risk Officer Comment 2021	The site contains areas at high, or medium risk from surface water flooding and/or the site contains some land in Flood Zones 2 and/or 3 but there is sufficient land in Flood Zone 1 to accommodate at least 5 additional dwellings or an increase of 500 square metres of employment floorspace.
Landscape RAG Assessment 2025	-
Landscape Comment 2025	-
Landscape RAG Assessment 2023	-
Landscape Comment 2023	-
Landscape RAG Assessment 2021	Red
Landscape Comment 2021	This is medium sized grass field outside and abutting the settlement edge of Foxton. Wide and local views are high with long distant views out towards the south of the site. Development upon this site would be an encroachment into the countryside, it would be permanent and urbanising the rural landscape. Residential units would also be harmful to the existing views both towards and out of the village with a significant impact to the sensitive urban edge as outlined in the neighbourhood plan.
Biodiversity and Geodiversity RAG Assessment 2025	-
Biodiversity and Geodiversity Officer Comments 2025	-
Biodiversity and Geodiversity Guideline Comments 2025	-
Biodiversity and Geodiversity RAG Assessment 2023	-
Biodiversity and Geodiversity Officer Comments 2023	-
Biodiversity and Geodiversity Guideline Comments 2023	-

Biodiversity and Geodiversity RAG Assessment 2021	Amber
Biodiversity and Geodiversity Officer Comments 2021	All new housing developments will require assessment of increased visitor pressure on nearby SSSI. There are no apparent priority habitats within the site; however, there are grasslands, woodland areas, hedges, and wooded boundaries on site that are likely to have ecological value. Applications may find provision of a 10% net gain in biodiversity difficult within their red line boundaries and may need to find offsite compensation to comply with up-coming National legislation and developing local policies.
Biodiversity and Geodiversity Guideline Comments 2021	Development of the site may have a detrimental impact on a designated site, or those with a regional or local protection but the impact could be reasonably mitigated or compensated.
Policy RAG Rating 2025	-
Policy Officer Comment 2025	-
Policy RAG Rating 2023	-
Policy Officer Comment 2023	-
Policy RAG Rating 2021	Green
Policy Officer Comments 2021	Site is not on protected open space designation. Any impact of the proposed development could be reasonably mitigated or compensated.
Historic Environment RAG Assessment 2025	-
Historic Environment Comments 2025	-
Historic Environment RAG Assessment 2023	-
Historic Environment Comments 2023	-
Historic Environment RAG Assessment 2021	Amber
Historic Environment Comments 2021	This field lies outside the village edge with only a few buildings in the vicinity. Foxton has not been greatly developed beyond its original form and development here would extend the village further west and change rural views into and out of the village. Development of the site could have a detrimental impact on a designated or non-designated heritage asset or the setting of a designated or non-designated heritage asset, but the impact could be reasonably mitigated.
Archaeology RAG Assessment 2025	-
Archaeology Officer Comment 2025	-
Archaeology RAG Assessment 2023	-
Archaeology Officer Comment 2023	-
Archaeology RAG Assessment 2021	Amber
Archaeology Officer Comment 2021	Located in a landscape of extensive prehistoric and Roman settlement and land use.

Accessibility RAG Assessment 2025 - Automated	Amber
Accessibility RAG Assessment 2025 - Officer Verified	-
Accessibility Comment 2025	Adequate accessibility to key local services, transport, and employment opportunities.
Site Access RAG Assessment 2025	-
Site Access Officer Comment 2025	-
Site Access RAG Assessment 2023	-
Site Access Officer Comment 2023	-
Site Access RAG Assessment 2021	Amber
Site Access Officer Comment 2021	The proposed site is acceptable in principle subject to detailed design.
Transport and Roads RAG Assessment 2025	-
Transport and Roads Guideline Comments 2025	-
Transport and Roads RAG Assessment 2023	-
Transport and Roads Guideline Comments 2023	-
Transport and Roads RAG Assessment 2021	Amber
Transport and Roads Guideline Comments 2021	Any potential impact on the functioning of trunk roads and/or local roads could be reasonably mitigated.
Noise, Vibration, Odour and Light Pollution RAG Assessment 2025	-
Noise, Vibration, Odour and Light Pollution Guideline Comments 2025	-
Noise, Vibration, Odour and Light Pollution RAG Assessment 2023	-
Noise, Vibration, Odour and Light Pollution Guideline Comments 2023	-
Noise, Vibration, Odour and Light Pollution RAG Assessment 2021	Amber
Noise, Vibration, Odour and Light Pollution Guideline Comments 2021	The proposed site will be affected by road traffic noise from nearby main roads but is acceptable in principle subject to appropriate detailed design considerations and mitigation.



AQMA RAG Assessment 2025	-
Air Quality Officer Comment 2025	-
AQMA RAG Assessment 2023	-
Air Quality Officer Comment 2023	-
AQMA RAG Assessment 2021	Green
Air Quality Officer Comment 2021	Site does not lie within an AQMA. Minimal traffic impact on AQMA.
Contaminated Land RAG Assessment 2025	-
Contaminated Land Officer Comments 2025	-
Contaminated Land RAG Assessment 2023	-
Contaminated Land Officer Comments 2023	-
Contaminated Land RAG Assessment 2021	Amber
Contaminated Land Officer Comments 2021	Previous agricultural land use. Potential for historic contamination, conditions required.
Overall Suitability Score	Red
Further constraints	-
Agricultural Land Classification Grade 1	0
Agricultural Land Classification Grade 2	100
Agricultural Land Classification Grade 3	0
Agricultural Land Classification Grade 4	0
Agricultural Land Classification Non Agricultural	0
Agricultural Land Classification Urban	0
Source Protection Zone	0
Highways England Zones	South West
Available	-
Is the site controlled by a developer or landowner who has expressed an intention to develop?	The site was submitted by the landowner and/or site promoter who has confirmed that the site is available for development in the timescales indicated.
Are there known legal or ownership impediments to development?	No

Is there planning permission to develop the site?	No relevant recent planning history
When will the site be available for development?	0-5 Years
Available RAG	Green
Achievable	-
Is there a reasonable prospect that the site will be developed?	The land has been promoted by the landowner and or developer and is known to be available for development. The site has a low existing use value and residential development is likely to be economically viable at an appropriate density.
Achievable RAG	Green
Capacity	-
Prevailing Density (weighted) (dwellings per ha)	30
Residential capacity at prevailing density	101
Estimated employment space (m2)	0
Estimated start date	0-5 Years
Estimated annual build-out rate (pa)	40-75
Development completion timescales (years)	0-5 Years

## Land south of Shepreth Road, Foxton assessment



A map of Land south of Shepreth Road, Foxton

Site information	-
Site ID	115813
HELAA Site ID	40430
Suitable Site Area (ha)	2.65940420939701
Ward/Parish	Foxton
Greenfield or Previously Developed?	Greenfield
Category of site	Dispersal: Villages / Transport Corridor
Category of settlement	Within or adjacent to Group Village
Current use(s)	-
Proposed development	Residential
Proposed employment floorspace (m2)	0
Proposed residential capacity	32
Suitability	-
Adopted Development Plan Policies RAG 2025	Amber

Adopted Development Plan Policies Comment 2025	Development of the site has some potential policy constraints, but these could be overcome through the planning application process.
Flood Risk RAG Assessment 2025	Amber
Flood Risk Officer Comment 2025	Flood Zone: Partly in Flood Zone 2 (3%). Partly in Flood Zone 3 (5%).. Surface Water Flooding: None
Flood Risk RAG Assessment 2023	-
Flood Risk Officer Comment 2023	-
Flood Risk RAG Assessment 2021	Amber
Flood Risk Officer Comment 2021	The site contains areas at high, or medium risk from surface water flooding and/or the site contains some land in Flood Zones 2 and/or 3 but there is sufficient land in Flood Zone 1 to accommodate at least 5 additional dwellings or an increase of 500 square metres of employment floorspace.
Landscape RAG Assessment 2025	-
Landscape Comment 2025	-
Landscape RAG Assessment 2023	-
Landscape Comment 2023	-
Landscape RAG Assessment 2021	Red
Landscape Comment 2021	Development upon this site would be an encroachment into the countryside, it would be permanent and urbanising the rural landscape. Wide and local views are high with long distant views out towards the south of the site. Residential units would also be harmful to the existing views both towards and out of the village with a significant impact to the sensitive urban edge as outlined in the neighbourhood plan. There is little scope to mitigate these effects without causing adverse harm to the existing landscape character.
Biodiversity and Geodiversity RAG Assessment 2025	-
Biodiversity and Geodiversity Officer Comments 2025	-
Biodiversity and Geodiversity Guideline Comments 2025	-
Biodiversity and Geodiversity RAG Assessment 2023	-
Biodiversity and Geodiversity Officer Comments 2023	-

Biodiversity and Geodiversity Guideline Comments 2023	-
Biodiversity and Geodiversity RAG Assessment 2021	Amber
Biodiversity and Geodiversity Officer Comments 2021	All new housing developments will require assessment of increased visitor pressure on nearby SSSI. There is a watercourse that runs adjacent to the southwest corner of the site that will require surveys and probable mitigation. There are no apparent priority habitats within the site; however, there are grasslands, hedges, and wooded boundaries on site that are likely to have ecological value. Applications may find provision of a 10% net gain in biodiversity difficult within their red line boundaries and may need to find offsite compensation to comply with up-coming National legislation and developing local policies.
Biodiversity and Geodiversity Guideline Comments 2021	Development of the site may have a detrimental impact on a designated site, or those with a regional or local protection but the impact could be reasonably mitigated or compensated.
Policy RAG Rating 2025	-
Policy Officer Comment 2025	-
Policy RAG Rating 2023	-
Policy Officer Comment 2023	-
Policy RAG Rating 2021	Green
Policy Officer Comments 2021	Site is not on protected open space designation. Any impact of the proposed development could be reasonably mitigated or compensated.
Historic Environment RAG Assessment 2025	-
Historic Environment Comments 2025	-
Historic Environment RAG Assessment 2023	-
Historic Environment Comments 2023	-
Historic Environment RAG Assessment 2021	Green
Historic Environment Comments 2021	Development of the site would have either a neutral or positive impact, but importantly not have a detrimental impact on any designated or non-designated heritage assets.
Archaeology RAG Assessment 2025	-
Archaeology Officer Comment 2025	-
Archaeology RAG Assessment 2023	-
Archaeology Officer Comment 2023	-
Archaeology RAG Assessment 2021	Amber

Archaeology Officer Comment 2021	Previous evaluation has confirmed the presence of significant archaeology. Excavation in advance of development would be appropriate.
Accessibility RAG Assessment 2025 - Automated	Amber
Accessibility RAG Assessment 2025 - Officer Verified	-
Accessibility Comment 2025	Adequate accessibility to key local services, transport, and employment opportunities.
Site Access RAG Assessment 2025	-
Site Access Officer Comment 2025	-
Site Access RAG Assessment 2023	-
Site Access Officer Comment 2023	-
Site Access RAG Assessment 2021	Amber
Site Access Officer Comment 2021	The proposed site is acceptable in principle subject to detailed design.
Transport and Roads RAG Assessment 2025	-
Transport and Roads Guideline Comments 2025	-
Transport and Roads RAG Assessment 2023	-
Transport and Roads Guideline Comments 2023	-
Transport and Roads RAG Assessment 2021	Amber
Transport and Roads Guideline Comments 2021	Any potential impact on the functioning of trunk roads and/or local roads could be reasonably mitigated.
Noise, Vibration, Odour and Light Pollution RAG Assessment 2025	-
Noise, Vibration, Odour and Light Pollution Guideline Comments 2025	-
Noise, Vibration, Odour and Light Pollution RAG Assessment 2023	-
Noise, Vibration, Odour and Light Pollution Guideline Comments 2023	-
Noise, Vibration, Odour and Light Pollution RAG Assessment 2021	Amber

Noise, Vibration, Odour and Light Pollution Guideline Comments 2021	The proposed site will be affected by road traffic noise from nearby main roads but is acceptable in principle subject to appropriate detailed design considerations and mitigation.
AQMA RAG Assessment 2025	-
Air Quality Officer Comment 2025	-
AQMA RAG Assessment 2023	-
Air Quality Officer Comment 2023	-
AQMA RAG Assessment 2021	Green
Air Quality Officer Comment 2021	Site does not lie within an AQMA. Minimal traffic impact on AQMA.
Contaminated Land RAG Assessment 2025	-
Contaminated Land Officer Comments 2025	-
Contaminated Land RAG Assessment 2023	-
Contaminated Land Officer Comments 2023	-
Contaminated Land RAG Assessment 2021	Green
Contaminated Land Officer Comments 2021	No prior history of development.
Overall Suitability Score	Red
Further constraints	-
Agricultural Land Classification Grade 1	0
Agricultural Land Classification Grade 2	100
Agricultural Land Classification Grade 3	0
Agricultural Land Classification Grade 4	0
Agricultural Land Classification Non Agricultural	0
Agricultural Land Classification Urban	0
Source Protection Zone	0
Highways England Zones	South West
Available	-
Is the site controlled by a developer or landowner who has expressed an intention to develop?	The site was submitted by the landowner and/or site promoter who has confirmed that the site is available for development in the timescales indicated.

Are there known legal or ownership impediments to development?	No
Is there planning permission to develop the site?	No, Appeal dismissed
When will the site be available for development?	0-5 Years
Available RAG	Green
Achievable	-
Is there a reasonable prospect that the site will be developed?	The land has been promoted by the landowner and or developer and is known to be available for development. The site has a low existing use value and residential development is likely to be economically viable at an appropriate density.
Achievable RAG	Green
Capacity	-
Prevailing Density (weighted) (dwellings per ha)	30
Residential capacity at prevailing density	64
Estimated employment space (m2)	0
Estimated start date	0-5 Years
Estimated annual build-out rate (pa)	40-75
Development completion timescales (years)	0-5 Years



## Land off Butts Lane, Fowlmere assessment



A map of Land off Butts Lane, Fowlmere

Site information	-
Site ID	115841
HELAA Site ID	40160
Suitable Site Area (ha)	0.187595588599491
Ward/Parish	Foxton
Greenfield or Previously Developed?	Greenfield
Category of site	Dispersal: Villages
Category of settlement	Within or adjacent to Group Village
Current use(s)	-
Proposed development	Residential
Proposed employment floorspace (m2)	0
Proposed residential capacity	6
Suitability	-
Adopted Development Plan Policies RAG 2025	Amber

Adopted Development Plan Policies Comment 2025	Development of the site has some potential policy constraints, but these could be overcome through the planning application process.
Flood Risk RAG Assessment 2025	Amber
Flood Risk Officer Comment 2025	Flood Zone: Wholly in Flood Zone 1. Surface Water Flooding: 16% lies in a 1 in 1000 year event
Flood Risk RAG Assessment 2023	-
Flood Risk Officer Comment 2023	-
Flood Risk RAG Assessment 2021	Green
Flood Risk Officer Comment 2021	The site is at low risk of flooding (within flood zone 1) and no risk from surface water flooding
Landscape RAG Assessment 2025	-
Landscape Comment 2025	-
Landscape RAG Assessment 2023	-
Landscape Comment 2023	-
Landscape RAG Assessment 2021	Green
Landscape Comment 2021	The site is overgrown with scrub and tree planting with an existing allotment to the west. Wide views are negligible and local views are high. Development upon this site would be an enhancement and be consistent with the existing settlement pattern.
Biodiversity and Geodiversity RAG Assessment 2025	-
Biodiversity and Geodiversity Officer Comments 2025	-
Biodiversity and Geodiversity Guideline Comments 2025	-
Biodiversity and Geodiversity RAG Assessment 2023	-
Biodiversity and Geodiversity Officer Comments 2023	-
Biodiversity and Geodiversity Guideline Comments 2023	-
Biodiversity and Geodiversity RAG Assessment 2021	Amber

Biodiversity and Geodiversity Officer Comments 2021	All new housing developments will require assessment of increased visitor pressure on nearby SSSI. The site is comprised predominately of woodland, removal of this woodland is unlikely to be compensated (biodiversity net gain) within the red line boundary of the site; therefore applicants will need to provide biodiversity net gain through offsite compensation. All wooded areas are likely to hold ecological value.
Biodiversity and Geodiversity Guideline Comments 2021	Development of the site may have a detrimental impact on a designated site, or those with a regional or local protection but the impact could be reasonably mitigated or compensated.
Policy RAG Rating 2025	-
Policy Officer Comment 2025	-
Policy RAG Rating 2023	-
Policy Officer Comment 2023	-
Policy RAG Rating 2021	Green
Policy Officer Comments 2021	Site is not on protected open space designation. Any impact of the proposed development could be reasonably mitigated or compensated.
Historic Environment RAG Assessment 2025	-
Historic Environment Comments 2025	-
Historic Environment RAG Assessment 2023	-
Historic Environment Comments 2023	-
Historic Environment RAG Assessment 2021	Green
Historic Environment Comments 2021	Development of the site would have either a neutral or positive impact, but importantly not have a detrimental impact on any designated or non-designated heritage assets.
Archaeology RAG Assessment 2025	-
Archaeology Officer Comment 2025	-
Archaeology RAG Assessment 2023	-
Archaeology Officer Comment 2023	-
Archaeology RAG Assessment 2021	Amber
Archaeology Officer Comment 2021	Located on the western edge of the medieval village core. Structures relating to the wartime use of the airfield may also survive.
Accessibility RAG Assessment 2025 - Automated	Amber
Accessibility RAG Assessment 2025 - Officer Verified	-
Accessibility Comment 2025	Adequate accessibility to key local services, transport, and employment opportunities.