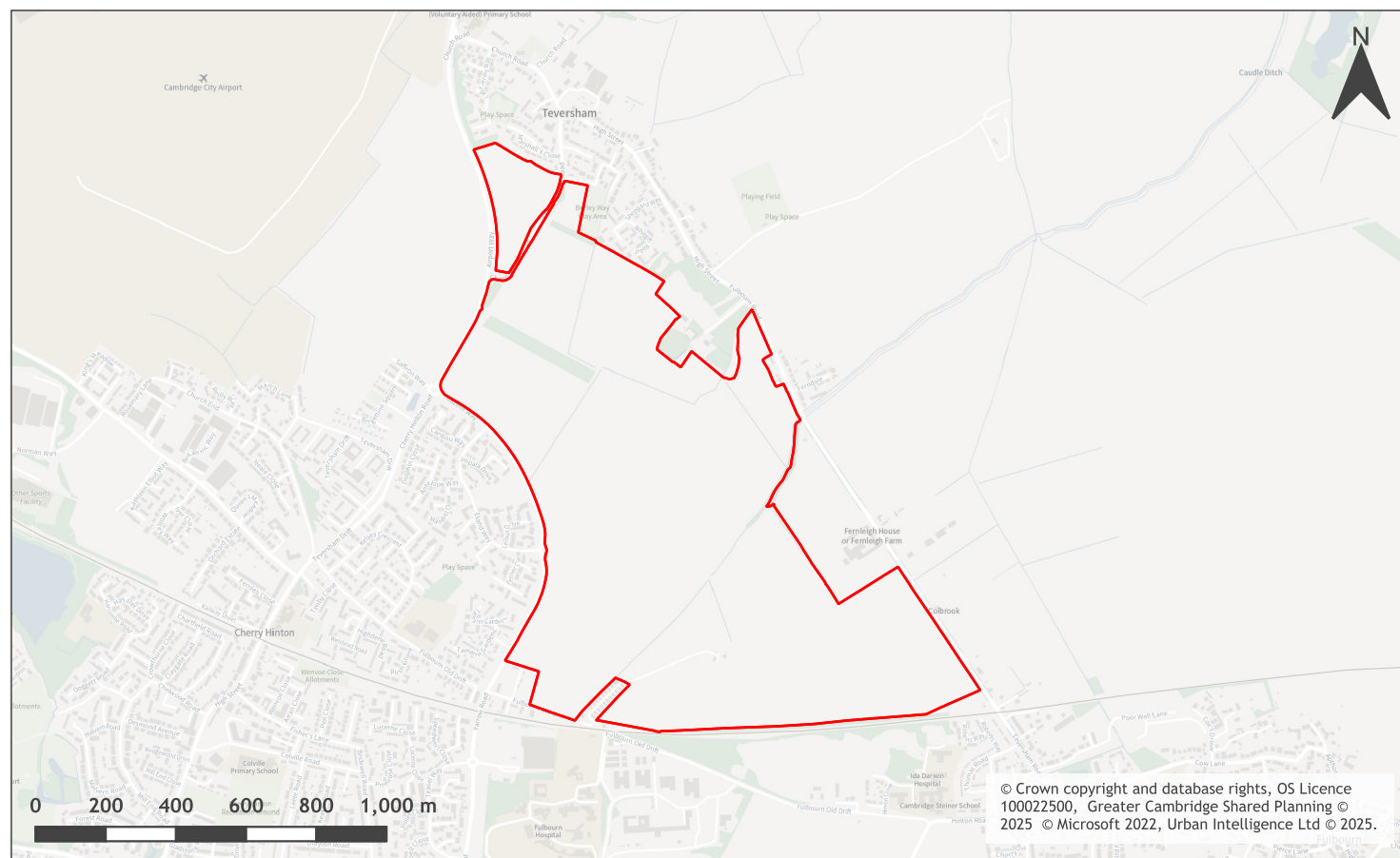


## Land East of Gazelle Way assessment



A map of Land East of Gazelle Way

Site information	-
Site ID	115222
HELAA Site ID	40250
Suitable Site Area (ha)	120.003676668898
Ward/Parish	Fen Ditton & Fulbourn
Greenfield or Previously Developed?	Greenfield
Category of site	Edge of Cambridge: Green Belt
Category of settlement	Edge of Cambridge
Current use(s)	Agricultural Land / Building
Proposed development	Mixed Use
Proposed employment floorspace (m2)	55000-45000
Proposed residential capacity	1080-1320
Suitability	-
Adopted Development Plan Policies RAG 2025	Amber

Adopted Development Plan Policies Comment 2025	Development of the site has some potential policy constraints, but these could be overcome through the planning application process.
Flood Risk RAG Assessment 2025	Amber
Flood Risk Officer Comment 2025	Flood Zones: Site is wholly within Flood Zone 1. Surface Water Flooding: 1% lies in a 1 in 100 year event. 3% lies in a 1 in 1000 year event.
Flood Risk RAG Assessment 2023	-
Flood Risk Officer Comment 2023	-
Flood Risk RAG Assessment 2021	Amber
Flood Risk Officer Comment 2021	The site is within flood zone 2 (taking into account climate change) and/or is within an area at high, medium or low risk from surface water flooding.
Landscape RAG Assessment 2025	Red
Landscape Comment 2025	The illustrative framework submitted as part of the revised information indicates a narrow continuation of the green belt corridor, however, it is considered that the space is too constrained to function well for all the uses envisaged, including sports fields and recreational spaces. Development of the site as shown would continue to have an adverse impact on the landscape character and would amalgamate Cambridge, Cherry Hinton, Teversham and Fulbourn, However, it is considered that with alterations to quantum of development, layout and character, and design of the open spaces, some limited development could be considered.
Landscape RAG Assessment 2023	Red
Landscape Comment 2023	A revision of the Vision Document was submitted as new information with some minor document modifications and an early Land Use parameter type plan. The new information does not alter the original assessment as the development will still result in a significant adverse impact on the landscape character and serve to amalgamate Cambridge, Cherry Hinton, Teversham and Fulbourn
Landscape RAG Assessment 2021	Red
Landscape Comment 2021	This submission consists of 2 sites separated by Cherry Hinton Road. Development upon this site would have a significant adverse impact upon the landscape character. It would amalgamate Cambridge, Teversham and Fulbourn and encroach into the rural countryside.
Biodiversity and Geodiversity RAG Assessment 2025	-
Biodiversity and Geodiversity Officer Comments 2025	-
Biodiversity and Geodiversity Guideline Comments 2025	-

Biodiversity and Geodiversity RAG Assessment 2023	Amber
Biodiversity and Geodiversity Officer Comments 2023	The supporting documents indicate that an ecological consultant have provided initial observations. This indicates that measures to safeguard Caulde Ditch will be a key aspect of the design to ensure that no adverse effects on Wilbraham Fens SSSI. It is recommended that there is no change to the site assessment scoring as more detailed information is required to demonstrate that impacts will be avoided. Further surveys for protected and Priority species will also be required.
Biodiversity and Geodiversity Guideline Comments 2023	Development of the site may have a detrimental impact on a designated site, or those with a regional or local protection but the impact could be reasonably mitigated or compensated.
Biodiversity and Geodiversity RAG Assessment 2021	Amber
Biodiversity and Geodiversity Officer Comments 2021	All new housing developments will require assessment of increased visitor pressure on nearby SSSIs. Boundary woodland and hedgerows may be Habitats of Principal Importance/priority habitats, of high ecological value and/or support protected or notable species. Otherwise arable habitats likely to be of low ecological value but potential to support breeding and wintering populations of farmland birds.
Biodiversity and Geodiversity Guideline Comments 2021	Development of the site may have a detrimental impact on a designated site, or those with a regional or local protection but the impact could be reasonably mitigated or compensated.
Policy RAG Rating 2025	-
Policy Officer Comment 2025	-
Policy RAG Rating 2023	-
Policy Officer Comment 2023	-
Policy RAG Rating 2021	Green
Policy Officer Comments 2021	Site is not on protected open space designation. Any impact of the proposed development could be reasonably mitigated or compensated.
Historic Environment RAG Assessment 2025	-
Historic Environment Comments 2025	-
Historic Environment RAG Assessment 2023	Amber
Historic Environment Comments 2023	Additional information has been provided in relation to impacts on heritage assets, as described in the documentation, and proposes mitigation. While these appear reasonable, further details would be required and therefore there is no change in the score of the earlier assessment
Historic Environment RAG Assessment 2021	Amber

Historic Environment Comments 2021	Significant issue of the setting of the Listed Farmhouse on a scheduled moated site. Fields closest to west should be excluded from site. Development of the site could have a detrimental impact on a designated or non-designated heritage asset or the setting of a designated or non-designated heritage asset, but the impact could be reasonably mitigated.
Archaeology RAG Assessment 2025	Red
Archaeology Officer Comment 2025	The assessment remains unchanged. The site includes the nationally important, designated medieval moat and associated features. The Roman settlement is also likely to be of equivalent significance to designated assets. We advise against the allocation of this site for development.
Archaeology RAG Assessment 2023	Red
Archaeology Officer Comment 2023	Based on the amended information provided, the assessment for the site remains unchanged as Red as there is evidence of significant archaeology in the area which will be adversely impacted by development and can not be mitigated.
Archaeology RAG Assessment 2021	Red
Archaeology Officer Comment 2021	Contains Roman remains of national importance. The scheduled site of Caudle Corner Farm is located in the southern part of the site. A Roman Villa in the area is also likely to be of national importance
Accessibility RAG Assessment 2025 - Automated	Green
Accessibility RAG Assessment 2025 - Officer Verified	-
Accessibility Comment 2025	Good accessibility to key local services, transport, and employment opportunities. Proposed development would not require delivery of accompanying key services
Site Access RAG Assessment 2025	-
Site Access Officer Comment 2025	-
Site Access RAG Assessment 2023	Amber
Site Access Officer Comment 2023	Based on the new information provided, the site access assessment remains unchanged. The proposed site is acceptable in principle, subject to detailed design at a planning application stage.
Site Access RAG Assessment 2021	Amber
Site Access Officer Comment 2021	The proposed site is acceptable in principle subject to detailed design.
Transport and Roads RAG Assessment 2025	-
Transport and Roads Guideline Comments 2025	-
Transport and Roads RAG Assessment 2023	Amber



Transport and Roads Guideline Comments 2023	Based on the new information provided, the assessment scoring remains Amber as the site will need to provide high quality passenger transport and non-motorised user links into existing and proposed non-motorised user and passenger transport facilities and Cambridge. Would impact on an existing severely congested part of the network and would therefore require a 'trip budget' approach. Would rely on delivery of the Eastern Access and Newmarket Road corridor proposals, and will require a robust Travel Plan.
Transport and Roads RAG Assessment 2021	Amber
Transport and Roads Guideline Comments 2021	Any potential impact on the functioning of trunk roads and/or local roads could be reasonably mitigated.
Noise, Vibration, Odour and Light Pollution RAG Assessment 2025	-
Noise, Vibration, Odour and Light Pollution Guideline Comments 2025	-
Noise, Vibration, Odour and Light Pollution RAG Assessment 2023	Amber
Noise, Vibration, Odour and Light Pollution Guideline Comments 2023	New information provided has not changed the assessment. The proposed site will be affected by road traffic noise from nearby main roads and by railway noise (and possibly vibration), but is acceptable in principle subject to appropriate detailed design considerations and mitigation. Detailed site specific assessments will be required for any future planning applications at this location.
Noise, Vibration, Odour and Light Pollution RAG Assessment 2021	Amber
Noise, Vibration, Odour and Light Pollution Guideline Comments 2021	The proposed site will be affected by road traffic noise from nearby main roads and by railway noise (and possibly vibration), but is acceptable in principle subject to appropriate detailed design considerations and mitigation.
AQMA RAG Assessment 2025	Amber
Air Quality Officer Comment 2025	No change to the score given the potential impacts on air quality.
AQMA RAG Assessment 2023	Amber
Air Quality Officer Comment 2023	The amended site boundary has been reviewed but the assessment remains unchanged since the original assessment. The site is located outside AQMA but there is potential for an impact on an AQMA which will require inherent / intrinsic designed in Air Quality mitigation.
AQMA RAG Assessment 2021	Amber
Air Quality Officer Comment 2021	Large site and lots of residential units - potential for AQMA traffic impact without mitigation
Contaminated Land RAG Assessment 2025	-
Contaminated Land Officer Comments 2025	-

Contaminated Land RAG Assessment 2023	Amber
Contaminated Land Officer Comments 2023	The revised site boundary has been reviewed but the assessment remains unchanged. This is a site previously in agricultural use with the potential for historic contamination and planning conditions will be required.
Contaminated Land RAG Assessment 2021	Amber
Contaminated Land Officer Comments 2021	Previous agricultural land use. Potential for historic contamination, conditions required.
Overall Suitability Score	Red
Further constraints	-
Agricultural Land Classification Grade 1	0
Agricultural Land Classification Grade 2	100
Agricultural Land Classification Grade 3	0
Agricultural Land Classification Grade 4	0
Agricultural Land Classification Non Agricultural	0
Agricultural Land Classification Urban	0
Source Protection Zone	17.43
Highways England Zones	A14 East, Cambridge, A11
Available	-
Is the site controlled by a developer or landowner who has expressed an intention to develop?	The site was submitted by the landowner and/or site promoter who has confirmed that the site is available for development in the timescales indicated.
Are there known legal or ownership impediments to development?	No
Is there planning permission to develop the site?	Yes, Planning permission granted for reserved matters of outline applications 18/0481/OUT and S/1231/18/OL as varied by references 22/01966/S73 and 22/01967/S73. (22/03140/REM), Application pending for conversion of agricultural buildings to farm shops and community uses (use classes E(a), E(b) and F1), external works to existing buildings with lawful commercial uses (class E), demolition of barns and erection of class E use building. (24/04820/FUL)
When will the site be available for development?	0 to 5 years
Available RAG	Amber
Achievable	-
Is there a reasonable prospect that the site will be developed?	The land has been promoted by the landowner and or developer and is known to be available for development. The site has a low existing use value and development is likely to be economically viable
Achievable RAG	Green

Capacity	-
Prevailing Density (weighted) (dwellings per ha)	30
Residential capacity at prevailing density	1800
Estimated employment space (m2)	55000-45000
Estimated start date	0-5 Years
Estimated annual build-out rate (pa)	40-75
Development completion timescales (years)	0-5 Years

## Land east of Airport Way and North of Newmarket Road assessment



A map of Land east of Airport Way and North of Newmarket Road

Site information	-
Site ID	115252
HELAA Site ID	40306
Suitable Site Area (ha)	135.66320625871
Ward/Parish	Fen Ditton & Fulbourn
Greenfield or Previously Developed?	Greenfield
Category of site	Edge of Cambridge: Green Belt
Category of settlement	Edge of Cambridge
Current use(s)	Agricultural Land / Building, Paddock / Scrub
Proposed development	Mixed Use
Proposed employment floorspace (m2)	35000-56000
Proposed residential capacity	2750 -3250
Suitability	-
Adopted Development Plan Policies RAG 2025	Amber

Adopted Development Plan Policies Comment 2025	Development of the site has some potential policy constraints, but these could be overcome through the planning application process.
Flood Risk RAG Assessment 2025	Amber
Flood Risk Officer Comment 2025	Flood Zones: Partially in Flood Zone 3 (9%). Surface Water Flooding: 1% lies in a 1 in 100 year event. 5% lies in a 1 in 1000 year event.
Flood Risk RAG Assessment 2023	-
Flood Risk Officer Comment 2023	-
Flood Risk RAG Assessment 2021	Amber
Flood Risk Officer Comment 2021	The site is within flood zones 3a or 3b.
Landscape RAG Assessment 2025	Red
Landscape Comment 2025	The new Vision Document shows that development could be designed with a strong landscape framework, and it could integrate recreational and ecological greenspaces and links. However, the scale of the built development encroaching east into the Cambridge Green Belt would cause loss of most of the existing landscape character and would likely result in significant, long-term changes to the landscape character within and around the site.
Landscape RAG Assessment 2023	-
Landscape Comment 2023	-
Landscape RAG Assessment 2021	Red
Landscape Comment 2021	This site proposal includes land beyond the safeguarded area, to the east of Airport Way, and to the north of Newmarket Road. Currently the land in these two parcels contribute to the buffering between the A14 and the edge of Cambridge. Buffer landscapes between development and motorways is essential to protecting the setting of the city and to achieving better quality development. By extending development to the east of Airport Way would expose long views from the east to additional impact. To the north of Newmarket Road, High Ditch Road could become the new edge of Cambridge. The potential transition in this area could be stark if not designed sympathetically. To the south and east of Newmarket Road and Airport Way, the impact is higher. The landscape here provides not only the a setting and buffer for Cambridge but also separates Teversham from becoming engulfed by development and amalgamating with Cambridge. Newmarket Road, east of the Airport Way roundabout is very heavily used commuter route, linking the A14 to the east and the B1102 to the northeast with Cambridge. The site proposes potential development on both sides of the road, which would unalterably change this approach to the City. The Marshall's Airport site includes an area of green belt safeguarded from the previous green belt release which must be retained to enable the green link which connects the wider countryside with the centre of Cambridge via the series of green spaces (Eastern Green Corridor as defined in the Cambridge LCA) which include Coldham's Common and Stourbridge Common to the River Cam.

Biodiversity and Geodiversity RAG Assessment 2025	-
Biodiversity and Geodiversity Officer Comments 2025	-
Biodiversity and Geodiversity Guideline Comments 2025	-
Biodiversity and Geodiversity RAG Assessment 2023	-
Biodiversity and Geodiversity Officer Comments 2023	-
Biodiversity and Geodiversity Guideline Comments 2023	-
Biodiversity and Geodiversity RAG Assessment 2021	Red
Biodiversity and Geodiversity Officer Comments 2021	All new housing developments will require assessment of increased visitor pressure on nearby SSSI, and all planning applications will require consultation with Natural England. There appears to be an area designated as Cambridge East Country Park within the boundary of the site. There does not appear to be any infrastructure associated with such areas; however if this area is a Country Park it may provide a reason for a principle objection to a development of size and scope proposed (RED). If there is no such area designated within the boundaries then the site should be acceptable with appropriate mitigation (AMBER). The eastern boundary of the site lies opposite the Airport Way CWS, which has been designated for its population of rare plants. There are numerous wooded areas within the boundary that are registered on the 2014 National Forest Inventory and may be classed as priority habitat. Quy Water runs along the southern boundary and will require survey and probable mitigation. There are no other apparent priority habitats within the site; however, there are buildings, grasslands, wooded areas, hedges, ditches, and wooded boundaries on site that are likely to have ecological value.
Biodiversity and Geodiversity Guideline Comments 2021	Development of the site would have a detrimental impact on designated sites, or those with a regional or local protection which cannot be reasonably mitigated or compensated as appropriate.
Policy RAG Rating 2025	-
Policy Officer Comment 2025	-
Policy RAG Rating 2023	-
Policy Officer Comment 2023	-
Policy RAG Rating 2021	Green
Policy Officer Comments 2021	This site has various designations. Development in accordance with Cambridge East Local Plan policies is acceptable. Development on Green Belt in principle not acceptable.

Historic Environment RAG Assessment 2025	-
Historic Environment Comments 2025	-
Historic Environment RAG Assessment 2023	-
Historic Environment Comments 2023	-
Historic Environment RAG Assessment 2021	Amber
Historic Environment Comments 2021	Development of the site could have a detrimental impact on the setting of Barham Hall on the opposite side of the road, but the impact could be reasonably mitigated with appropriate layout and design.
Archaeology RAG Assessment 2025	Red
Archaeology Officer Comment 2025	Roman settlement is recorded in the west of this area. Cropmarks also indicate Iron Age and/or Roman activity in the area. Further information would be necessary to determine the suitability of this site for development.
Archaeology RAG Assessment 2023	-
Archaeology Officer Comment 2023	-
Archaeology RAG Assessment 2021	Amber
Archaeology Officer Comment 2021	Located in a landscape of known prehistoric, Roman, Saxon and medieval activity.
Accessibility RAG Assessment 2025 - Automated	Amber
Accessibility RAG Assessment 2025 - Officer Verified	-
Accessibility Comment 2025	Inadequate accessibility to key local services, transport, and employment opportunities. Proposed development would require accompanying primary school, local centre/employment provision and community centre
Site Access RAG Assessment 2025	-
Site Access Officer Comment 2025	-
Site Access RAG Assessment 2023	-
Site Access Officer Comment 2023	-
Site Access RAG Assessment 2021	Amber
Site Access Officer Comment 2021	The proposed site is acceptable in principle subject to detailed design.
Transport and Roads RAG Assessment 2025	-

Transport and Roads Guideline Comments 2025	-
Transport and Roads RAG Assessment 2023	-
Transport and Roads Guideline Comments 2023	-
Transport and Roads RAG Assessment 2021	Amber
Transport and Roads Guideline Comments 2021	Any potential impact on the functioning of trunk roads and/or local roads could be reasonably mitigated.
Noise, Vibration, Odour and Light Pollution RAG Assessment 2025	-
Noise, Vibration, Odour and Light Pollution Guideline Comments 2025	-
Noise, Vibration, Odour and Light Pollution RAG Assessment 2023	-
Noise, Vibration, Odour and Light Pollution Guideline Comments 2023	-
Noise, Vibration, Odour and Light Pollution RAG Assessment 2021	Amber
Noise, Vibration, Odour and Light Pollution Guideline Comments 2021	Nearby airport activities (industrial type ground operations and airborne aircraft) - The proposed site will be affected by noise from but is acceptable in principle subject to appropriate detailed design / mitigation considerations and mitigation. The proposed site will be affected by noise from nearby industrial/commercial activities but is acceptable in principle subject to appropriate detailed design considerations and mitigation.
AQMA RAG Assessment 2025	-
Air Quality Officer Comment 2025	-
AQMA RAG Assessment 2023	-
Air Quality Officer Comment 2023	-
AQMA RAG Assessment 2021	Amber
Air Quality Officer Comment 2021	Large site and lots of residential units - potential for AQMA traffic impact without mitigation
Contaminated Land RAG Assessment 2025	-
Contaminated Land Officer Comments 2025	-
Contaminated Land RAG Assessment 2023	-
Contaminated Land Officer Comments 2023	-



Contaminated Land RAG Assessment 2021	Amber
Contaminated Land Officer Comments 2021	Brownfield site, contamination expected, conditions required
Overall Suitability Score	Red
Further constraints	-
Agricultural Land Classification Grade 1	0
Agricultural Land Classification Grade 2	59.17
Agricultural Land Classification Grade 3	34.83
Agricultural Land Classification Grade 4	6
Agricultural Land Classification Non Agricultural	0
Agricultural Land Classification Urban	0
Source Protection Zone	0
Highways England Zones	A14 East
Available	-
Is the site controlled by a developer or landowner who has expressed an intention to develop?	The site was submitted by the landowner and/or site promoter who has confirmed that the site is available for development in the timescales indicated.
Are there known legal or ownership impediments to development?	Yes - The site is in multiple landownership - agreements to be secured.
Is there planning permission to develop the site?	Yes, Planning permission granted for laying of car park surfacing and the installation of a decorative gateway at the car park entrance. (20/02476/FUL), Planning permission granted for installation of a 33kV to 11kV substation. (24/03629/FUL)
When will the site be available for development?	6 to 10 years
Available RAG	Amber
Achievable	-
Is there a reasonable prospect that the site will be developed?	The land has been promoted by the landowner and or developer and is known to be available for development. The site has a low existing use value and development is likely to be economically viable
Achievable RAG	Green
Capacity	-
Prevailing Density (weighted) (dwellings per ha)	30
Residential capacity at prevailing density	2035
Estimated employment space (m2)	35000-56000

Estimated start date	6-10 Years
Estimated annual build-out rate (pa)	225-230
Development completion timescales (years)	11-15 years

## Land east of Clayhithe Road, Horningsea assessment



A map of Land east of Clayhithe Road, Horningsea

Site information	-
Site ID	115487
HELAA Site ID	40137
Suitable Site Area (ha)	0.367162303350415
Ward/Parish	Fen Ditton & Fulbourn
Greenfield or Previously Developed?	Greenfield
Category of site	Dispersal: Villages
Category of settlement	Within or adjacent to Infill Village
Current use(s)	-
Proposed development	Residential
Proposed employment floorspace (m2)	0
Proposed residential capacity	11
Suitability	-
Adopted Development Plan Policies RAG 2025	Amber

Adopted Development Plan Policies Comment 2025	Development of the site has some potential policy constraints, but these could be overcome through the planning application process.
Flood Risk RAG Assessment 2025	Amber
Flood Risk Officer Comment 2025	Flood Zone: Wholly in Flood Zone 1. Surface Water Flooding: 1% lies in a 1 in 100 year event. 3% lies in a 1 in 1000 year event
Flood Risk RAG Assessment 2023	-
Flood Risk Officer Comment 2023	-
Flood Risk RAG Assessment 2021	Amber
Flood Risk Officer Comment 2021	The site is within flood zone 2 (taking into account climate change) and/or is within an area at high, medium or low risk from surface water flooding.
Landscape RAG Assessment 2025	-
Landscape Comment 2025	-
Landscape RAG Assessment 2023	-
Landscape Comment 2023	-
Landscape RAG Assessment 2021	Green
Landscape Comment 2021	Development upon this site would have neutral impact to the landscape character. With careful landscape mitigation measures the site would be enhanced subject to the following principles: other than a single access the existing native hedgerow to be protected and retained, buildings to the street facing and a new hedgerow boundary to be planted upon its eastern boundary to integrate with the landscape and create a new settlement edge.
Biodiversity and Geodiversity RAG Assessment 2025	-
Biodiversity and Geodiversity Officer Comments 2025	-
Biodiversity and Geodiversity Guideline Comments 2025	-
Biodiversity and Geodiversity RAG Assessment 2023	-
Biodiversity and Geodiversity Officer Comments 2023	-
Biodiversity and Geodiversity Guideline Comments 2023	-
Biodiversity and Geodiversity RAG Assessment 2021	Green

Biodiversity and Geodiversity Officer Comments 2021	Application unlikely to require Natural England consultation. There are no apparent priority habitats within the site; however, there are grasslands, hedges and wooded boundaries on site that are likely to have ecological value.
Biodiversity and Geodiversity Guideline Comments 2021	Development of the site would not have a detrimental impact on any designated site, or those with a regional or local protection.
Policy RAG Rating 2025	-
Policy Officer Comment 2025	-
Policy RAG Rating 2023	-
Policy Officer Comment 2023	-
Policy RAG Rating 2021	Green
Policy Officer Comments 2021	Site is not on protected open space designation. Any impact of the proposed development could be reasonably mitigated or compensated.
Historic Environment RAG Assessment 2025	-
Historic Environment Comments 2025	-
Historic Environment RAG Assessment 2023	-
Historic Environment Comments 2023	-
Historic Environment RAG Assessment 2021	Amber
Historic Environment Comments 2021	Rural village edge and adjacent to Conservation Area. Any development here would need to respect scale and design of surrounding area. Development of the site could have a detrimental impact on a designated or non-designated heritage asset or the setting of a designated or non-designated heritage asset, but the impact could be reasonably mitigated.
Archaeology RAG Assessment 2025	-
Archaeology Officer Comment 2025	-
Archaeology RAG Assessment 2023	-
Archaeology Officer Comment 2023	-
Archaeology RAG Assessment 2021	Amber
Archaeology Officer Comment 2021	Located on the northern edge of the historic village core. Extensive late prehistoric and Roman archaeology also known in the area
Accessibility RAG Assessment 2025 - Automated	Amber
Accessibility RAG Assessment 2025 - Officer Verified	-

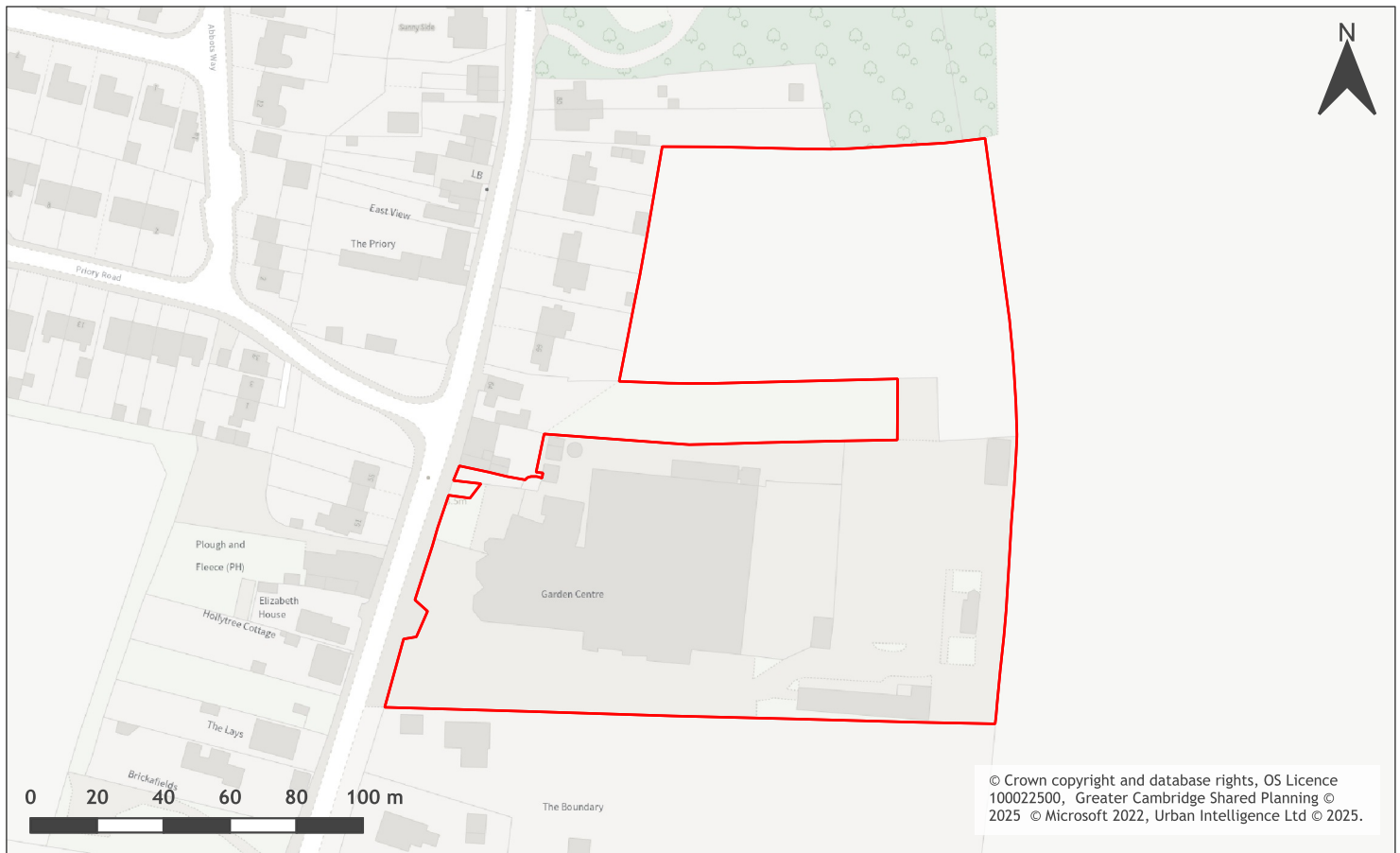
Accessibility Comment 2025	Adequate accessibility to key local services, transport, and employment opportunities.
Site Access RAG Assessment 2025	-
Site Access Officer Comment 2025	-
Site Access RAG Assessment 2023	-
Site Access Officer Comment 2023	-
Site Access RAG Assessment 2021	Amber
Site Access Officer Comment 2021	The proposed site is acceptable in principle subject to detailed design.
Transport and Roads RAG Assessment 2025	-
Transport and Roads Guideline Comments 2025	-
Transport and Roads RAG Assessment 2023	-
Transport and Roads Guideline Comments 2023	-
Transport and Roads RAG Assessment 2021	Green
Transport and Roads Guideline Comments 2021	Development of the site will not have a detrimental impact on the functioning of trunk roads and/or local roads.
Noise, Vibration, Odour and Light Pollution RAG Assessment 2025	-
Noise, Vibration, Odour and Light Pollution Guideline Comments 2025	-
Noise, Vibration, Odour and Light Pollution RAG Assessment 2023	-
Noise, Vibration, Odour and Light Pollution Guideline Comments 2023	-
Noise, Vibration, Odour and Light Pollution RAG Assessment 2021	Amber
Noise, Vibration, Odour and Light Pollution Guideline Comments 2021	The site is capable of being developed to provide healthy internal and external environments in regard to noise / vibration/ odour/ Light Pollution after careful site layout, design and mitigation.
AQMA RAG Assessment 2025	-
Air Quality Officer Comment 2025	-
AQMA RAG Assessment 2023	-

Air Quality Officer Comment 2023	-
AQMA RAG Assessment 2021	Green
Air Quality Officer Comment 2021	Site does not lie within an AQMA. Minimal traffic impact on AQMA.
Contaminated Land RAG Assessment 2025	-
Contaminated Land Officer Comments 2025	-
Contaminated Land RAG Assessment 2023	-
Contaminated Land Officer Comments 2023	-
Contaminated Land RAG Assessment 2021	Amber
Contaminated Land Officer Comments 2021	Potential for historic contamination, conditions required.
Overall Suitability Score	Amber
Further constraints	-
Agricultural Land Classification Grade 1	0
Agricultural Land Classification Grade 2	0
Agricultural Land Classification Grade 3	100
Agricultural Land Classification Grade 4	0
Agricultural Land Classification Non Agricultural	0
Agricultural Land Classification Urban	0
Source Protection Zone	0
Highways England Zones	A14 CNB
Available	-
Is the site controlled by a developer or landowner who has expressed an intention to develop?	The site was submitted by the landowner and/or site promoter who has confirmed that the site is available for development in the timescales indicated.
Are there known legal or ownership impediments to development?	No
Is there planning permission to develop the site?	No relevant recent planning history
When will the site be available for development?	0-5 Years
Available RAG	Green

Achievable	-
Is there a reasonable prospect that the site will be developed?	The land has been promoted by the landowner and or developer and is known to be available for development. The site has a low existing use value and residential development is likely to be economically viable at an appropriate density.
Achievable RAG	Green
Capacity	-
Prevailing Density (weighted) (dwellings per ha)	30
Residential capacity at prevailing density	11
Estimated employment space (m2)	0
Estimated start date	0-5 Years
Estimated annual build-out rate (pa)	40-75
Development completion timescales (years)	0-5 Years



## High Street, Horningsea assessment



A map of High Street, Horningsea

Site information	-
Site ID	115488
HELAA Site ID	40113
Suitable Site Area (ha)	2.2565620069533
Ward/Parish	Fen Ditton & Fulbourn
Greenfield or Previously Developed?	Greenfield and Previously Developed Land
Category of site	Dispersal: Villages
Category of settlement	Within or adjacent to Infill Village
Current use(s)	-
Proposed development	Non-Residential
Proposed employment floorspace (m2)	13000
Proposed residential capacity	0
Suitability	-
Adopted Development Plan Policies RAG 2025	Amber

Adopted Development Plan Policies Comment 2025	Development of the site has some potential policy constraints, but these could be overcome through the planning application process.
Flood Risk RAG Assessment 2025	Amber
Flood Risk Officer Comment 2025	Flood Zone: Wholly in Flood Zone 1. Surface Water Flooding: 5% lies in a 1 in 30 year event. 4% lies in a 1 in 100 year event. 8% lies in a 1 in 1000 year event
Flood Risk RAG Assessment 2023	-
Flood Risk Officer Comment 2023	-
Flood Risk RAG Assessment 2021	Amber
Flood Risk Officer Comment 2021	The site is within flood zone 2 (taking into account climate change) and/or is within an area at high, medium or low risk from surface water flooding.
Landscape RAG Assessment 2025	-
Landscape Comment 2025	-
Landscape RAG Assessment 2023	-
Landscape Comment 2023	-
Landscape RAG Assessment 2021	Amber
Landscape Comment 2021	There are limited views to and from the site, and it is enclosed by existing buildings to the west and south and mature vegetation on all boundaries, although the eastern vegetation is thinner. Depending on their design, location and scale of development within the site, and depending on appropriate mitigation measures, it should be possible to accommodate the proposed employment uses for the site with limited landscape impacts.
Biodiversity and Geodiversity RAG Assessment 2025	-
Biodiversity and Geodiversity Officer Comments 2025	-
Biodiversity and Geodiversity Guideline Comments 2025	-
Biodiversity and Geodiversity RAG Assessment 2023	-
Biodiversity and Geodiversity Officer Comments 2023	-
Biodiversity and Geodiversity Guideline Comments 2023	-

Biodiversity and Geodiversity RAG Assessment 2021	Amber
Biodiversity and Geodiversity Officer Comments 2021	All new large non-residential developments, outside of current settlements in excess of 1 ha and any infrastructure such as warehousing over 1000m <sup>2</sup> will require Natural England consultation. There are no apparent priority habitats within the site; however, there are grasslands, hedges and wooded boundaries on site that are likely to have ecological value.
Biodiversity and Geodiversity Guideline Comments 2021	Development of the site may have a detrimental impact on a designated site, or those with a regional or local protection but the impact could be reasonably mitigated or compensated.
Policy RAG Rating 2025	-
Policy Officer Comment 2025	-
Policy RAG Rating 2023	-
Policy Officer Comment 2023	-
Policy RAG Rating 2021	Green
Policy Officer Comments 2021	Site is not on protected open space designation. Any impact of the proposed development could be reasonably mitigated or compensated.
Historic Environment RAG Assessment 2025	-
Historic Environment Comments 2025	-
Historic Environment RAG Assessment 2023	-
Historic Environment Comments 2023	-
Historic Environment RAG Assessment 2021	Red
Historic Environment Comments 2021	North of the site is extremely sensitive and unlikely to sustain any new development whilst there may be limited scope to the south. Development of the site would cause substantial harm, or severe or significant “Less than substantial harm” to a designated heritage asset or the setting of a designated heritage asset which cannot be reasonably mitigated.
Archaeology RAG Assessment 2025	-
Archaeology Officer Comment 2025	-
Archaeology RAG Assessment 2023	-
Archaeology Officer Comment 2023	-
Archaeology RAG Assessment 2021	Amber
Archaeology Officer Comment 2021	Located on the southern edge of the historic village core. Evidence for Roman settlement to the east

Accessibility RAG Assessment 2025 - Automated	Amber
Accessibility RAG Assessment 2025 - Officer Verified	-
Accessibility Comment 2025	Adequate accessibility to key local services, transport, and employment opportunities.
Site Access RAG Assessment 2025	-
Site Access Officer Comment 2025	-
Site Access RAG Assessment 2023	-
Site Access Officer Comment 2023	-
Site Access RAG Assessment 2021	Amber
Site Access Officer Comment 2021	The proposed site is acceptable in principle subject to detailed design.
Transport and Roads RAG Assessment 2025	-
Transport and Roads Guideline Comments 2025	-
Transport and Roads RAG Assessment 2023	-
Transport and Roads Guideline Comments 2023	-
Transport and Roads RAG Assessment 2021	Amber
Transport and Roads Guideline Comments 2021	Any potential impact on the functioning of trunk roads and/or local roads could be reasonably mitigated.
Noise, Vibration, Odour and Light Pollution RAG Assessment 2025	-
Noise, Vibration, Odour and Light Pollution Guideline Comments 2025	-
Noise, Vibration, Odour and Light Pollution RAG Assessment 2023	-
Noise, Vibration, Odour and Light Pollution Guideline Comments 2023	-
Noise, Vibration, Odour and Light Pollution RAG Assessment 2021	Amber
Noise, Vibration, Odour and Light Pollution Guideline Comments 2021	The proposed site will be affected by road traffic noise from nearby main roads, but is acceptable in principle subject to appropriate detailed design considerations and mitigation. The site is capable of being developed in regard to vibration/ odour/ light Pollution after careful site layout, design and mitigation.

AQMA RAG Assessment 2025	-
Air Quality Officer Comment 2025	-
AQMA RAG Assessment 2023	-
Air Quality Officer Comment 2023	-
AQMA RAG Assessment 2021	Green
Air Quality Officer Comment 2021	Not suggested for residential use therefore likely low traffic impact on AQMA
Contaminated Land RAG Assessment 2025	-
Contaminated Land Officer Comments 2025	-
Contaminated Land RAG Assessment 2023	-
Contaminated Land Officer Comments 2023	-
Contaminated Land RAG Assessment 2021	Amber
Contaminated Land Officer Comments 2021	Brownfield site, contamination expected, conditions required
Overall Suitability Score	Red
Further constraints	-
Agricultural Land Classification Grade 1	0
Agricultural Land Classification Grade 2	0
Agricultural Land Classification Grade 3	100
Agricultural Land Classification Grade 4	0
Agricultural Land Classification Non Agricultural	0
Agricultural Land Classification Urban	0
Source Protection Zone	0
Highways England Zones	A14 CNB
Available	-
Is the site controlled by a developer or landowner who has expressed an intention to develop?	The site was submitted by the landowner and/or site promoter who has confirmed that the site is available for development in the timescales indicated.
Are there known legal or ownership impediments to development?	No

Is there planning permission to develop the site?	No relevant recent planning history
When will the site be available for development?	0-5 Years
Available RAG	Green
Achievable	-
Is there a reasonable prospect that the site will be developed?	The land has been promoted by the landowner and or developer and is known to be available for development. The site has a low existing use value and non-residential development is likely to be economically viable at an appropriate density.
Achievable RAG	Green
Capacity	-
Prevailing Density (weighted) (dwellings per ha)	30
Residential capacity at prevailing density	54
Estimated employment space (m2)	13000
Estimated start date	0-5 Years
Estimated annual build-out rate (pa)	-
Development completion timescales (years)	0-5 Years

## Land north of Wilbraham Rd, Six Mile Bottom assessment



A map of Land north of Wilbraham Rd, Six Mile Bottom

Site information	-
Site ID	115491
HELAA Site ID	59380
Suitable Site Area (ha)	4.09757409565545
Ward/Parish	Fen Ditton & Fulbourn
Greenfield or Previously Developed?	Greenfield
Category of site	Dispersal: Villages
Category of settlement	Within or adjacent to Infill Village
Current use(s)	-
Proposed development	Residential
Proposed employment floorspace (m2)	0
Proposed residential capacity	50
Suitability	-
Adopted Development Plan Policies RAG 2025	Amber

Adopted Development Plan Policies Comment 2025	Development of the site has some potential policy constraints, but these could be overcome through the planning application process.
Flood Risk RAG Assessment 2025	Green
Flood Risk Officer Comment 2025	Flood Zone: Wholly in Flood Zone 1. Surface Water Flooding: 2% lies in a 1 in 30 year event. 1% lies in a 1 in 100 year event. 1% lies in a 1 in 1000 year event
Flood Risk RAG Assessment 2023	Green
Flood Risk Officer Comment 2023	-
Flood Risk RAG Assessment 2021	-
Flood Risk Officer Comment 2021	-
Landscape RAG Assessment 2025	-
Landscape Comment 2025	-
Landscape RAG Assessment 2023	Amber
Landscape Comment 2023	The site comprises two long rectangular fields or paddocks which are bordered by trees and hedges next to London Road and Wilbraham Road. The site is outside the Development Framework. Very limited development could be accommodated in the eastern section of the eastern field but only as part of a planned expansion of the settlement and with sensitive landscape design to integrate housing into the rural setting.
Landscape RAG Assessment 2021	-
Landscape Comment 2021	-
Biodiversity and Geodiversity RAG Assessment 2025	-
Biodiversity and Geodiversity Officer Comments 2025	-
Biodiversity and Geodiversity Guideline Comments 2025	-
Biodiversity and Geodiversity RAG Assessment 2023	Amber
Biodiversity and Geodiversity Officer Comments 2023	All new housing developments will require assessment of increased visitor pressure on nearby SSSI. There are no apparent Priority habitats within the site; however, there are grasslands, woodland areas, hedges, and wooded boundaries on site that are likely to have ecological value. Applications may find provision of a 10 % net gain in biodiversity difficult within their redline boundaries.
Biodiversity and Geodiversity Guideline Comments 2023	Development of the site may have a detrimental impact on a designated site, or those with a regional or local protection but the impact could be reasonably mitigated or compensated.



Biodiversity and Geodiversity RAG Assessment 2021	-
Biodiversity and Geodiversity Officer Comments 2021	-
Biodiversity and Geodiversity Guideline Comments 2021	-
Policy RAG Rating 2025	-
Policy Officer Comment 2025	-
Policy RAG Rating 2023	Green
Policy Officer Comment 2023	Site is not on protected open space designation. Any impact of the proposed development could be reasonably mitigated or compensated.
Policy RAG Rating 2021	-
Policy Officer Comments 2021	-
Historic Environment RAG Assessment 2025	-
Historic Environment Comments 2025	-
Historic Environment RAG Assessment 2023	Green
Historic Environment Comments 2023	There are no heritage assets within or near the site. There are potential NDHAs further to the north and east although these are unlikely to be affected by development. Development of the site would have either a neutral or positive impact, but importantly not have a detrimental impact on any designated or non-designated heritage assets.
Historic Environment RAG Assessment 2021	-
Historic Environment Comments 2021	-
Archaeology RAG Assessment 2025	-
Archaeology Officer Comment 2025	-
Archaeology RAG Assessment 2023	Amber
Archaeology Officer Comment 2023	Cropmarks of probable prehistoric activity in known in the vicinity
Archaeology RAG Assessment 2021	-
Archaeology Officer Comment 2021	-
Accessibility RAG Assessment 2025 - Automated	Red
Accessibility RAG Assessment 2025 - Officer Verified	-

Accessibility Comment 2025	Inadequate accessibility to key local services, transport, and employment opportunities.
Site Access RAG Assessment 2025	-
Site Access Officer Comment 2025	-
Site Access RAG Assessment 2023	Amber
Site Access Officer Comment 2023	The proposed site is acceptable in principle, subject to detailed design at a planning application stage.
Site Access RAG Assessment 2021	-
Site Access Officer Comment 2021	-
Transport and Roads RAG Assessment 2025	-
Transport and Roads Guideline Comments 2025	-
Transport and Roads RAG Assessment 2023	Green
Transport and Roads Guideline Comments 2023	Based on the nature and scale of the proposed development, there are no substantial roads and transport impacts identified at this stage.
Transport and Roads RAG Assessment 2021	-
Transport and Roads Guideline Comments 2021	-
Noise, Vibration, Odour and Light Pollution RAG Assessment 2025	-
Noise, Vibration, Odour and Light Pollution Guideline Comments 2025	-
Noise, Vibration, Odour and Light Pollution RAG Assessment 2023	Amber
Noise, Vibration, Odour and Light Pollution Guideline Comments 2023	The proposed site will be affected by road traffic noise from nearby main roads but is acceptable in principle subject to appropriate detailed design considerations and mitigation. Detailed site specific assessments will be required for any future planning applications at this location.
Noise, Vibration, Odour and Light Pollution RAG Assessment 2021	-
Noise, Vibration, Odour and Light Pollution Guideline Comments 2021	-
AQMA RAG Assessment 2025	-
Air Quality Officer Comment 2025	-
AQMA RAG Assessment 2023	Green

Air Quality Officer Comment 2023	The site does not lie within an AQMA and there will be minimal traffic impact on AQMA.
AQMA RAG Assessment 2021	-
Air Quality Officer Comment 2021	-
Contaminated Land RAG Assessment 2025	-
Contaminated Land Officer Comments 2025	-
Contaminated Land RAG Assessment 2023	Amber
Contaminated Land Officer Comments 2023	The site has the potential for historic contamination and, therefore, planning conditions will be required.
Contaminated Land RAG Assessment 2021	-
Contaminated Land Officer Comments 2021	-
Overall Suitability Score	Red
Further constraints	-
Agricultural Land Classification Grade 1	0
Agricultural Land Classification Grade 2	63.6
Agricultural Land Classification Grade 3	36.4
Agricultural Land Classification Grade 4	0
Agricultural Land Classification Non Agricultural	0
Agricultural Land Classification Urban	0
Source Protection Zone	100
Highways England Zones	A11
Available	-
Is the site controlled by a developer or landowner who has expressed an intention to develop?	The site was submitted by the landowner and/or site promoter who has confirmed that the site is available for development in the timescales indicated.
Are there known legal or ownership impediments to development?	No
Is there planning permission to develop the site?	No relevant recent planning history
When will the site be available for development?	0-5 Years
Available RAG	Green

Achievable	-
Is there a reasonable prospect that the site will be developed?	The land has been promoted by the landowner and or developer and is known to be available for development. The site has a low existing use value and residential development is likely to be economically viable at an appropriate density.
Achievable RAG	Green
Capacity	-
Prevailing Density (weighted) (dwellings per ha)	30
Residential capacity at prevailing density	98
Estimated employment space (m2)	0
Estimated start date	0-5 Years
Estimated annual build-out rate (pa)	40-75
Development completion timescales (years)	0-5 Years

## Land at Parsonage Farm, Horningsea assessment



A map of Land at Parsonage Farm, Horningsea

Site information	-
Site ID	115492
HELAA Site ID	40482
Suitable Site Area (ha)	4.28789645854786
Ward/Parish	Fen Ditton & Fulbourn
Greenfield or Previously Developed?	Greenfield
Category of site	Dispersal: Villages
Category of settlement	Not within or adjacent to an existing settlement
Current use(s)	-
Proposed development	Residential
Proposed employment floorspace (m2)	0
Proposed residential capacity	20
Suitability	-
Adopted Development Plan Policies RAG 2025	Amber

Adopted Development Plan Policies Comment 2025	Development of the site has some potential policy constraints, but these could be overcome through the planning application process.
Flood Risk RAG Assessment 2025	Amber
Flood Risk Officer Comment 2025	Flood Zone: Wholly in Flood Zone 1. Surface Water Flooding: 5% lies in a 1 in 30 year event. 5% lies in a 1 in 100 year event. 10% lies in a 1 in 1000 year event
Flood Risk RAG Assessment 2023	-
Flood Risk Officer Comment 2023	-
Flood Risk RAG Assessment 2021	Amber
Flood Risk Officer Comment 2021	The site contains areas at high, or medium risk from surface water flooding and/or the site contains some land in Flood Zones 2 and/or 3 but there is sufficient land in Flood Zone 1 to accommodate at least 5 additional dwellings or an increase of 500 square metres of employment floorspace.
Landscape RAG Assessment 2025	-
Landscape Comment 2025	-
Landscape RAG Assessment 2023	-
Landscape Comment 2023	-
Landscape RAG Assessment 2021	Red
Landscape Comment 2021	The site is set in a rural location and outside the village settlement framework. Wide and local views are extensive due to low lying nature of topography and lack of boundary vegetation. The site is not attached to the village settlement edge and development would appear incongruous and isolated. Therefore, development would have a significant adverse impact to the landscape character and an encroachment into the countryside.
Biodiversity and Geodiversity RAG Assessment 2025	-
Biodiversity and Geodiversity Officer Comments 2025	-
Biodiversity and Geodiversity Guideline Comments 2025	-
Biodiversity and Geodiversity RAG Assessment 2023	-
Biodiversity and Geodiversity Officer Comments 2023	-
Biodiversity and Geodiversity Guideline Comments 2023	-

Biodiversity and Geodiversity RAG Assessment 2021	Green
Biodiversity and Geodiversity Officer Comments 2021	Application unlikely to require Natural England consultation. There are no apparent priority habitats within the site; however, there are grasslands, hedges, and wooded boundaries on site that are likely to have ecological value. Applications may find provision of a 10% net gain in biodiversity difficult within their red line boundaries and may need to find offsite compensation to comply with up-coming National legislation and developing local policies.
Biodiversity and Geodiversity Guideline Comments 2021	Development of the site would not have a detrimental impact on any designated site, or those with a regional or local protection.
Policy RAG Rating 2025	-
Policy Officer Comment 2025	-
Policy RAG Rating 2023	-
Policy Officer Comment 2023	-
Policy RAG Rating 2021	Green
Policy Officer Comments 2021	Site is not on protected open space designation. Any impact of the proposed development could be reasonably mitigated or compensated.
Historic Environment RAG Assessment 2025	-
Historic Environment Comments 2025	-
Historic Environment RAG Assessment 2023	-
Historic Environment Comments 2023	-
Historic Environment RAG Assessment 2021	Amber
Historic Environment Comments 2021	Development of the site could have harmful impact on views from Stapleford unless design and layout are informed by this issue.
Archaeology RAG Assessment 2025	-
Archaeology Officer Comment 2025	-
Archaeology RAG Assessment 2023	-
Archaeology Officer Comment 2023	-
Archaeology RAG Assessment 2021	Amber
Archaeology Officer Comment 2021	Located in a landscape of Roman settlement and associated activity
Accessibility RAG Assessment 2025 - Automated	Amber

Accessibility RAG Assessment 2025 - Officer Verified	-
Accessibility Comment 2025	Adequate accessibility to key local services, transport, and employment opportunities.
Site Access RAG Assessment 2025	-
Site Access Officer Comment 2025	-
Site Access RAG Assessment 2023	-
Site Access Officer Comment 2023	-
Site Access RAG Assessment 2021	Amber
Site Access Officer Comment 2021	The proposed site is acceptable in principle subject to detailed design.
Transport and Roads RAG Assessment 2025	-
Transport and Roads Guideline Comments 2025	-
Transport and Roads RAG Assessment 2023	-
Transport and Roads Guideline Comments 2023	-
Transport and Roads RAG Assessment 2021	Amber
Transport and Roads Guideline Comments 2021	Any potential impact on the functioning of trunk roads and/or local roads could be reasonably mitigated.
Noise, Vibration, Odour and Light Pollution RAG Assessment 2025	-
Noise, Vibration, Odour and Light Pollution Guideline Comments 2025	-
Noise, Vibration, Odour and Light Pollution RAG Assessment 2023	-
Noise, Vibration, Odour and Light Pollution Guideline Comments 2023	-
Noise, Vibration, Odour and Light Pollution RAG Assessment 2021	Amber
Noise, Vibration, Odour and Light Pollution Guideline Comments 2021	The site is capable of being developed to provide healthy internal and external environments in regard to noise / vibration/ odour/ Light Pollution after careful site layout, design and mitigation.
AQMA RAG Assessment 2025	-
Air Quality Officer Comment 2025	-



AQMA RAG Assessment 2023	-
Air Quality Officer Comment 2023	-
AQMA RAG Assessment 2021	Green
Air Quality Officer Comment 2021	Site does not lie within an AQMA. Minimal traffic impact on AQMA.
Contaminated Land RAG Assessment 2025	-
Contaminated Land Officer Comments 2025	-
Contaminated Land RAG Assessment 2023	-
Contaminated Land Officer Comments 2023	-
Contaminated Land RAG Assessment 2021	Amber
Contaminated Land Officer Comments 2021	Potential for historic contamination, conditions required.
Overall Suitability Score	Red
Further constraints	-
Agricultural Land Classification Grade 1	0
Agricultural Land Classification Grade 2	24.65
Agricultural Land Classification Grade 3	75.35
Agricultural Land Classification Grade 4	0
Agricultural Land Classification Non Agricultural	0
Agricultural Land Classification Urban	0
Source Protection Zone	0
Highways England Zones	A14 CNB
Available	-
Is the site controlled by a developer or landowner who has expressed an intention to develop?	The site was submitted by the landowner and/or site promoter who has confirmed that the site is available for development in the timescales indicated.
Are there known legal or ownership impediments to development?	No
Is there planning permission to develop the site?	No relevant recent planning history
When will the site be available for development?	0-5 Years

Available RAG	Green
Achievable	-
Is there a reasonable prospect that the site will be developed?	The land has been promoted by the landowner and or developer and is known to be available for development. The site has a low existing use value and residential development is likely to be economically viable at an appropriate density.
Achievable RAG	Green
Capacity	-
Prevailing Density (weighted) (dwellings per ha)	30
Residential capacity at prevailing density	103
Estimated employment space (m2)	0
Estimated start date	0-5 Years
Estimated annual build-out rate (pa)	40-75
Development completion timescales (years)	0-5 Years

## Land at Horningsea Road, Fen Ditton assessment



A map of Land at Horningsea Road, Fen Ditton

Site information	-
Site ID	115493
HELAA Site ID	40406
Suitable Site Area (ha)	5.63206135462748
Ward/Parish	Fen Ditton & Fulbourn
Greenfield or Previously Developed?	Greenfield
Category of site	Dispersal: Villages
Category of settlement	Not within or adjacent to an existing settlement
Current use(s)	-
Proposed development	Residential
Proposed employment floorspace (m2)	0
Proposed residential capacity	150
Suitability	-
Adopted Development Plan Policies RAG 2025	Amber

Adopted Development Plan Policies Comment 2025	Development of the site has some potential policy constraints, but these could be overcome through the planning application process.
Flood Risk RAG Assessment 2025	Amber
Flood Risk Officer Comment 2025	Flood Zone: Wholly in Flood Zone 1. Surface Water Flooding: 2% lies in a 1 in 100 year event. 5% lies in a 1 in 1000 year event
Flood Risk RAG Assessment 2023	-
Flood Risk Officer Comment 2023	-
Flood Risk RAG Assessment 2021	Amber
Flood Risk Officer Comment 2021	The site is within flood zone 2 (taking into account climate change) and/or is within an area at high, medium or low risk from surface water flooding.
Landscape RAG Assessment 2025	-
Landscape Comment 2025	-
Landscape RAG Assessment 2023	-
Landscape Comment 2023	-
Landscape RAG Assessment 2021	Amber
Landscape Comment 2021	The site consists of agricultural land and allotments adjacent to and to the rear of houses on Horningsea Road, within the Green Belt. The agricultural field to the rear of the houses is edged by shallow ditches, but it otherwise very open. Views are potentially available from the A14, but intervening hedging along the motorway adequately mitigates the impact. Views are also available from Horningsea Road further to the north. Development of the site would be clearly visible and impactful to the character without adequate mitigations. Unit numbers may require reductions to allow for landscape mitigation at an appropriate width to filter views from the surrounding landscape or from neighbours.
Biodiversity and Geodiversity RAG Assessment 2025	-
Biodiversity and Geodiversity Officer Comments 2025	-
Biodiversity and Geodiversity Guideline Comments 2025	-
Biodiversity and Geodiversity RAG Assessment 2023	-
Biodiversity and Geodiversity Officer Comments 2023	-

Biodiversity and Geodiversity Guideline Comments 2023	-
Biodiversity and Geodiversity RAG Assessment 2021	Amber
Biodiversity and Geodiversity Officer Comments 2021	Consultation with Natural England required if discharge to ground or surface water of more than 5m <sup>3</sup> per day. Most of site (arable habitats) likely to be of low ecological value although may support farmland bird populations. South-west field and boundary hedgerows may qualify as Habitats of Principal Importance/be of high ecological value and support protected or notable species.
Biodiversity and Geodiversity Guideline Comments 2021	Development of the site may have a detrimental impact on a designated site, or those with a regional or local protection but the impact could be reasonably mitigated or compensated.
Policy RAG Rating 2025	-
Policy Officer Comment 2025	-
Policy RAG Rating 2023	-
Policy Officer Comment 2023	-
Policy RAG Rating 2021	Green
Policy Officer Comments 2021	Site is not on protected open space designation. Any impact of the proposed development could be reasonably mitigated or compensated.
Historic Environment RAG Assessment 2025	-
Historic Environment Comments 2025	-
Historic Environment RAG Assessment 2023	-
Historic Environment Comments 2023	-
Historic Environment RAG Assessment 2021	Green
Historic Environment Comments 2021	Development of the site would have either a neutral or positive impact, but importantly not have a detrimental impact on any designated or non-designated heritage assets.
Archaeology RAG Assessment 2025	-
Archaeology Officer Comment 2025	-
Archaeology RAG Assessment 2023	-
Archaeology Officer Comment 2023	-
Archaeology RAG Assessment 2021	Amber
Archaeology Officer Comment 2021	Extensive evidence for Roman settlement in the vicinity including the scheduled settlement site Caudle Corner Farm to the north

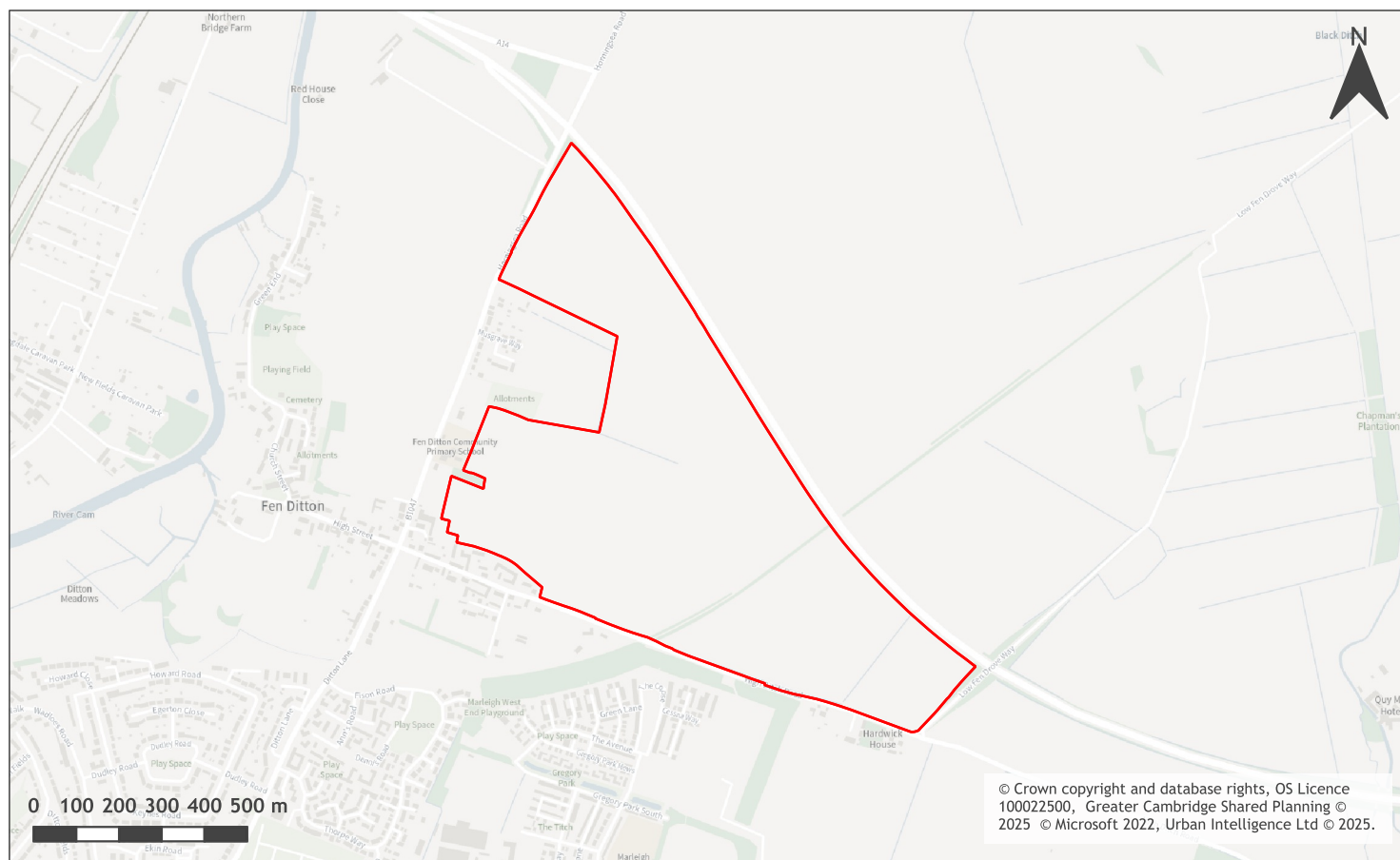
Accessibility RAG Assessment 2025 - Automated	Amber
Accessibility RAG Assessment 2025 - Officer Verified	-
Accessibility Comment 2025	Adequate accessibility to key local services, transport, and employment opportunities.
Site Access RAG Assessment 2025	-
Site Access Officer Comment 2025	-
Site Access RAG Assessment 2023	-
Site Access Officer Comment 2023	-
Site Access RAG Assessment 2021	Red
Site Access Officer Comment 2021	The proposed site does not to have a direct link to the adopted public highway.
Transport and Roads RAG Assessment 2025	-
Transport and Roads Guideline Comments 2025	-
Transport and Roads RAG Assessment 2023	-
Transport and Roads Guideline Comments 2023	-
Transport and Roads RAG Assessment 2021	Amber
Transport and Roads Guideline Comments 2021	Any potential impact on the functioning of trunk roads and/or local roads could be reasonably mitigated.
Noise, Vibration, Odour and Light Pollution RAG Assessment 2025	-
Noise, Vibration, Odour and Light Pollution Guideline Comments 2025	-
Noise, Vibration, Odour and Light Pollution RAG Assessment 2023	-
Noise, Vibration, Odour and Light Pollution Guideline Comments 2023	-
Noise, Vibration, Odour and Light Pollution RAG Assessment 2021	Amber
Noise, Vibration, Odour and Light Pollution Guideline Comments 2021	The site is capable of being developed to provide healthy internal and external environments in regard to noise / vibration/ odour/ Light Pollution after careful site layout, design and mitigation.

AQMA RAG Assessment 2025	-
Air Quality Officer Comment 2025	-
AQMA RAG Assessment 2023	-
Air Quality Officer Comment 2023	-
AQMA RAG Assessment 2021	Green
Air Quality Officer Comment 2021	Site does not lie within an AQMA. Minimal traffic impact on AQMA.
Contaminated Land RAG Assessment 2025	-
Contaminated Land Officer Comments 2025	-
Contaminated Land RAG Assessment 2023	-
Contaminated Land Officer Comments 2023	-
Contaminated Land RAG Assessment 2021	Amber
Contaminated Land Officer Comments 2021	Previous agricultural land use. Potential for historic contamination, conditions required.
Overall Suitability Score	Red
Further constraints	-
Agricultural Land Classification Grade 1	0
Agricultural Land Classification Grade 2	39.35
Agricultural Land Classification Grade 3	60.65
Agricultural Land Classification Grade 4	0
Agricultural Land Classification Non Agricultural	0
Agricultural Land Classification Urban	0
Source Protection Zone	0
Highways England Zones	A14 CNB
Available	-
Is the site controlled by a developer or landowner who has expressed an intention to develop?	The site was submitted by the landowner and/or site promoter who has confirmed that the site is available for development in the timescales indicated.
Are there known legal or ownership impediments to development?	No

Is there planning permission to develop the site?	No relevant recent planning history
When will the site be available for development?	0-5 Years
Available RAG	Green
Achievable	-
Is there a reasonable prospect that the site will be developed?	The land has been promoted by the landowner and or developer and is known to be available for development. The site has a low existing use value and residential development is likely to be economically viable at an appropriate density.
Achievable RAG	Green
Capacity	-
Prevailing Density (weighted) (dwellings per ha)	30
Residential capacity at prevailing density	118
Estimated employment space (m2)	0
Estimated start date	0-5 Years
Estimated annual build-out rate (pa)	40-75
Development completion timescales (years)	6-10 Years



## Land to the east of Horningsea Road, Fen Ditton assessment



A map of Land to the east of Horningsea Road, Fen Ditton

Site information	-
Site ID	115494
HELAA Site ID	47647
Suitable Site Area (ha)	66.4359981667911
Ward/Parish	Fen Ditton & Fulbourn
Greenfield or Previously Developed?	Greenfield
Category of site	Edge of Cambridge: Green Belt
Category of settlement	Within or adjacent to Group Village
Current use(s)	-
Proposed development	Residential
Proposed employment floorspace (m2)	0
Proposed residential capacity	1320
Suitability	-
Adopted Development Plan Policies RAG 2025	Amber

Adopted Development Plan Policies Comment 2025	Development of the site has some potential policy constraints, but these could be overcome through the planning application process.
Flood Risk RAG Assessment 2025	Amber
Flood Risk Officer Comment 2025	Flood Zone: Wholly in Flood Zone 1. Surface Water Flooding: 3% lies in a 1 in 1000 year event
Flood Risk RAG Assessment 2023	-
Flood Risk Officer Comment 2023	-
Flood Risk RAG Assessment 2021	Amber
Flood Risk Officer Comment 2021	The site contains areas at high, or medium risk from surface water flooding and/or the site contains some land in Flood Zones 2 and/or 3 but there is sufficient land in Flood Zone 1 to accommodate at least 5 additional dwellings or an increase of 500 square metres of employment floorspace.
Landscape RAG Assessment 2025	-
Landscape Comment 2025	-
Landscape RAG Assessment 2023	Red
Landscape Comment 2023	The new information includes a Vision Document which links the site to a neighbouring plot east of Horningsea Road (JDI 40516). The vision document proposes a large city extension which extends (though with vegetated buffers) to the A14. Views are long from surrounding areas and across rural fields and countryside and this would be irreversibly altered by development. Ultimately the original assessment stands.
Landscape RAG Assessment 2021	Red
Landscape Comment 2021	This is a large site located to the north east of the village of Fen Ditton outside and abutting the settlement framework. wide, local and amenity views are high due to low lying nature of topography and lack of boundary vegetation. Development upon this site would have a significant adverse impact to the landscape character. It would be an encroachment into the landscape and an urbanisation of the rural landscape.
Biodiversity and Geodiversity RAG Assessment 2025	-
Biodiversity and Geodiversity Officer Comments 2025	-
Biodiversity and Geodiversity Guideline Comments 2025	-
Biodiversity and Geodiversity RAG Assessment 2023	Amber

Biodiversity and Geodiversity Officer Comments 2023	No detailed information has been provided in relation to ecology impacts and mitigation and therefore there is no change to the site assessment scoring.
Biodiversity and Geodiversity Guideline Comments 2023	Development of the site may have a detrimental impact on a designated site, or those with a regional or local protection but the impact could be reasonably mitigated or compensated.
Biodiversity and Geodiversity RAG Assessment 2021	Amber
Biodiversity and Geodiversity Officer Comments 2021	Discharge to surface or ground water of more than 5m <sup>3</sup> /day will require consultation with Natural England. Retention/mitigation may be required. Drove through centre of site may be of high ecological value as continuous to Low Fen Drove Way; grasslands and hedges 35m to north. Boundary hedgerows, watercourses and woodland may qualify as Habitats of Principal Importance/be of high ecological importance and support protected or notable species. Arable habitats likely to be of low ecological value, although may support farmland bird populations.
Biodiversity and Geodiversity Guideline Comments 2021	Development of the site may have a detrimental impact on a designated site, or those with a regional or local protection but the impact could be reasonably mitigated or compensated.
Policy RAG Rating 2025	-
Policy Officer Comment 2025	-
Policy RAG Rating 2023	-
Policy Officer Comment 2023	-
Policy RAG Rating 2021	Green
Policy Officer Comments 2021	Site is not on protected open space designation. Any impact of the proposed development could be reasonably mitigated or compensated.
Historic Environment RAG Assessment 2025	-
Historic Environment Comments 2025	-
Historic Environment RAG Assessment 2023	Amber
Historic Environment Comments 2023	The additional information makes the assessment that any impacts on the historic environment could be reasonably mitigated. This is in line with the previous assessment and so the Rag rating remains the same.
Historic Environment RAG Assessment 2021	Amber
Historic Environment Comments 2021	Development of the site could have a detrimental impact on Listed Buildings on High Ditch Road and the adjoining Conservation Area but the impact could be reasonably mitigated. Development of the site should avoid or respond to this area.
Archaeology RAG Assessment 2025	-
Archaeology Officer Comment 2025	-
Archaeology RAG Assessment 2023	Amber

Archaeology Officer Comment 2023	Based on the additional information provided, the assessment for the site remains unchanged as Amber as there is evidence of archaeology in the area that will require further investigation.
Archaeology RAG Assessment 2021	Amber
Archaeology Officer Comment 2021	Multi period remains recorded within and in the vicinity of the site including a settlement of Roman date to the north
Accessibility RAG Assessment 2025 - Automated	Amber
Accessibility RAG Assessment 2025 - Officer Verified	-
Accessibility Comment 2025	Adequate accessibility to key local services, transport, and employment opportunities.
Site Access RAG Assessment 2025	-
Site Access Officer Comment 2025	-
Site Access RAG Assessment 2023	Amber
Site Access Officer Comment 2023	Based on the new information provided, the site access assessment remains unchanged. The proposed site is acceptable in principle subject to detailed design.
Site Access RAG Assessment 2021	Amber
Site Access Officer Comment 2021	The proposed site is acceptable in principle subject to detailed design.
Transport and Roads RAG Assessment 2025	-
Transport and Roads Guideline Comments 2025	-
Transport and Roads RAG Assessment 2023	Amber
Transport and Roads Guideline Comments 2023	Based on the new information provided the Amber assessment remains unchanged. The site will need to provide high quality local Non-Motorised User links and passenger transport links into Cambridge North Station and Cambridge centre. The site will potentially have an impact on the congested Newmarket Road and will be dependent on schemes relating to the Eastern Access and Non-Motorised User routes on Newmarket Road. It will therefore require a robust Travel Plan.
Transport and Roads RAG Assessment 2021	Amber
Transport and Roads Guideline Comments 2021	Any potential impact on the functioning of trunk roads and/or local roads could be reasonably mitigated.
Noise, Vibration, Odour and Light Pollution RAG Assessment 2025	-
Noise, Vibration, Odour and Light Pollution Guideline Comments 2025	-

Noise, Vibration, Odour and Light Pollution RAG Assessment 2023	Amber
Noise, Vibration, Odour and Light Pollution Guideline Comments 2023	New information provided has not changed the assessment. The proposed site will be affected by road traffic noise from nearby main roads but is acceptable in principle subject to appropriate detailed design considerations and mitigation. Detailed site specific assessments will be required for any future planning applications at this location.
Noise, Vibration, Odour and Light Pollution RAG Assessment 2021	Amber
Noise, Vibration, Odour and Light Pollution Guideline Comments 2021	The proposed site will be affected by road traffic noise from nearby main roads but is acceptable in principle subject to appropriate detailed design considerations and mitigation. The site is capable of being developed to provide healthy internal and external environments in regard to noise / vibration/ odour/ Light Pollution after careful site layout, design and mitigation.
AQMA RAG Assessment 2025	-
Air Quality Officer Comment 2025	-
AQMA RAG Assessment 2023	Amber
Air Quality Officer Comment 2023	The additional information provided does not significantly affect air quality issues or mitigation. Therefore the assessment of the site remains unchanged since the original assessment. The site is located outside an AQMA but there is potential for an impact on AQMA which will require inherent / intrinsic designed in Air Quality mitigation.
AQMA RAG Assessment 2021	Amber
Air Quality Officer Comment 2021	Large site and lots of residential units - potential for AQMA traffic impact without mitigation
Contaminated Land RAG Assessment 2025	-
Contaminated Land Officer Comments 2025	-
Contaminated Land RAG Assessment 2023	Amber
Contaminated Land Officer Comments 2023	The additional information provided does not significantly affect environmental health issues or mitigation. Therefore the assessment of the site remains unchanged since the original assessment as this is a site adjacent to a railway with the potential for historic contamination and planning conditions will be required including a desk top study.
Contaminated Land RAG Assessment 2021	Amber
Contaminated Land Officer Comments 2021	Site adjacent to a railway. Potential for historic contamination, conditions required. Phase I likely.
Overall Suitability Score	Red
Further constraints	-
Agricultural Land Classification Grade 1	0

Agricultural Land Classification Grade 2	81.23
Agricultural Land Classification Grade 3	18.77
Agricultural Land Classification Grade 4	0
Agricultural Land Classification Non Agricultural	0
Agricultural Land Classification Urban	0
Source Protection Zone	0
Highways England Zones	A14 CNB, A14 East
Available	-
Is the site controlled by a developer or landowner who has expressed an intention to develop?	The site was submitted by the landowner and/or site promoter who has confirmed that the site is available for development in the timescales indicated.
Are there known legal or ownership impediments to development?	No
Is there planning permission to develop the site?	No relevant recent planning history
When will the site be available for development?	6-10 Years
Available RAG	Green
Achievable	-
Is there a reasonable prospect that the site will be developed?	The land has been promoted by the landowner and or developer and is known to be available for development. The site has a low existing use value and residential development is likely to be economically viable at an appropriate density.
Achievable RAG	Green
Capacity	-
Prevailing Density (weighted) (dwellings per ha)	30
Residential capacity at prevailing density	997
Estimated employment space (m2)	0
Estimated start date	6-10 Years
Estimated annual build-out rate (pa)	120
Development completion timescales (years)	6-10 Years