

Archaeology Officer Comment 2023	-
Archaeology RAG Assessment 2021	Amber
Archaeology Officer Comment 2021	Located within the extent of the Saxon and medieval extent of the village
Accessibility RAG Assessment 2025 - Automated	Amber
Accessibility RAG Assessment 2025 - Officer Verified	-
Accessibility Comment 2025	Adequate accessibility to key local services, transport, and employment opportunities.
Site Access RAG Assessment 2025	-
Site Access Officer Comment 2025	-
Site Access RAG Assessment 2023	-
Site Access Officer Comment 2023	-
Site Access RAG Assessment 2021	Amber
Site Access Officer Comment 2021	The proposed site is acceptable in principle subject to detailed design.
Transport and Roads RAG Assessment 2025	-
Transport and Roads Guideline Comments 2025	-
Transport and Roads RAG Assessment 2023	-
Transport and Roads Guideline Comments 2023	-
Transport and Roads RAG Assessment 2021	Green
Transport and Roads Guideline Comments 2021	Development of the site will not have a detrimental impact on the functioning of trunk roads and/or local roads.
Noise, Vibration, Odour and Light Pollution RAG Assessment 2025	-
Noise, Vibration, Odour and Light Pollution Guideline Comments 2025	-
Noise, Vibration, Odour and Light Pollution RAG Assessment 2023	-
Noise, Vibration, Odour and Light Pollution Guideline Comments 2023	-

Noise, Vibration, Odour and Light Pollution RAG Assessment 2021	Amber
Noise, Vibration, Odour and Light Pollution Guideline Comments 2021	The proposed site will be affected by road traffic noise from nearby main roads but is acceptable in principle subject to appropriate detailed design considerations and mitigation.
AQMA RAG Assessment 2025	-
Air Quality Officer Comment 2025	-
AQMA RAG Assessment 2023	-
Air Quality Officer Comment 2023	-
AQMA RAG Assessment 2021	Green
Air Quality Officer Comment 2021	Site does not lie within an AQMA. Minimal traffic impact on AQMA.
Contaminated Land RAG Assessment 2025	-
Contaminated Land Officer Comments 2025	-
Contaminated Land RAG Assessment 2023	-
Contaminated Land Officer Comments 2023	-
Contaminated Land RAG Assessment 2021	Amber
Contaminated Land Officer Comments 2021	Previous agricultural land use. Potential for historic contamination, conditions required.
Overall Suitability Score	Red
Further constraints	-
Agricultural Land Classification Grade 1	58.83
Agricultural Land Classification Grade 2	0
Agricultural Land Classification Grade 3	0
Agricultural Land Classification Grade 4	0
Agricultural Land Classification Non Agricultural	0
Agricultural Land Classification Urban	41.17
Source Protection Zone	0
Highways England Zones	A14 CNB
Available	-

Is the site controlled by a developer or landowner who has expressed an intention to develop?	The site was submitted by the landowner and/or site promoter who has confirmed that the site is available for development in the timescales indicated.
Are there known legal or ownership impediments to development?	No
Is there planning permission to develop the site?	No relevant recent planning history
When will the site be available for development?	0-5 Years
Available RAG	Green
Achievable	-
Is there a reasonable prospect that the site will be developed?	The land has been promoted by the landowner and or developer and is known to be available for development. The site has a low existing use value and residential development is likely to be economically viable at an appropriate density.
Achievable RAG	Green
Capacity	-
Prevailing Density (weighted) (dwellings per ha)	30
Residential capacity at prevailing density	194
Estimated employment space (m2)	0
Estimated start date	0-5 Years
Estimated annual build-out rate (pa)	40-75
Development completion timescales (years)	0-5 Years

Land at Beach Road, Cottenham assessment



A map of Land at Beach Road, Cottenham

Site information	-
Site ID	115472
HELAA Site ID	40346
Suitable Site Area (ha)	1.77934117334179
Ward/Parish	Cottenham
Greenfield or Previously Developed?	Greenfield
Category of site	Dispersal: Villages
Category of settlement	Not within or adjacent to an existing settlement
Current use(s)	-
Proposed development	Residential
Proposed employment floorspace (m2)	0
Proposed residential capacity	40
Suitability	-
Adopted Development Plan Policies RAG 2025	Amber

Adopted Development Plan Policies Comment 2025	Development of the site has some potential policy constraints, but these could be overcome through the planning application process.
Flood Risk RAG Assessment 2025	Amber
Flood Risk Officer Comment 2025	Flood Zone: Wholly in Flood Zone 1. Surface Water Flooding: 1% lies in a 1 in 30 year event. 3% lies in a 1 in 1000 year event
Flood Risk RAG Assessment 2023	-
Flood Risk Officer Comment 2023	-
Flood Risk RAG Assessment 2021	Green
Flood Risk Officer Comment 2021	The site is at low risk of flooding (within flood zone 1) and no risk from surface water flooding
Landscape RAG Assessment 2025	-
Landscape Comment 2025	-
Landscape RAG Assessment 2023	-
Landscape Comment 2023	-
Landscape RAG Assessment 2021	Red
Landscape Comment 2021	Development would cause the loss of an orchard, and begin to alter the character of Beach Road. The light industrial and farm sites along Beach Road with large gaps of trees, hedges and fields which aid in transitioning the development framework of Cottenham to the countryside
Biodiversity and Geodiversity RAG Assessment 2025	-
Biodiversity and Geodiversity Officer Comments 2025	-
Biodiversity and Geodiversity Guideline Comments 2025	-
Biodiversity and Geodiversity RAG Assessment 2023	-
Biodiversity and Geodiversity Officer Comments 2023	-
Biodiversity and Geodiversity Guideline Comments 2023	-
Biodiversity and Geodiversity RAG Assessment 2021	Amber

Biodiversity and Geodiversity Officer Comments 2021	Discharge to surface or ground water of more than 20m ³ per day would require consultation with Natural England. Mature trees and boundary hedgerows may qualify as Habitats of Principal Importance/be of high ecological value. Appears to be plantation woodland within site. Otherwise habitats may be of low ecological importance. Building may support roosting bats (if suitable).
Biodiversity and Geodiversity Guideline Comments 2021	Development of the site may have a detrimental impact on a designated site, or those with a regional or local protection but the impact could be reasonably mitigated or compensated.
Policy RAG Rating 2025	-
Policy Officer Comment 2025	-
Policy RAG Rating 2023	-
Policy Officer Comment 2023	-
Policy RAG Rating 2021	Green
Policy Officer Comments 2021	Site is not on protected open space designation. Any impact of the proposed development could be reasonably mitigated or compensated.
Historic Environment RAG Assessment 2025	-
Historic Environment Comments 2025	-
Historic Environment RAG Assessment 2023	-
Historic Environment Comments 2023	-
Historic Environment RAG Assessment 2021	Green
Historic Environment Comments 2021	Development of the site would have either a neutral or positive impact, but importantly not have a detrimental impact on any designated or non-designated heritage assets.
Archaeology RAG Assessment 2025	-
Archaeology Officer Comment 2025	-
Archaeology RAG Assessment 2023	-
Archaeology Officer Comment 2023	-
Archaeology RAG Assessment 2021	Amber
Archaeology Officer Comment 2021	Located within the extent of the Saxox and medieval extent of the village
Accessibility RAG Assessment 2025 - Automated	Amber
Accessibility RAG Assessment 2025 - Officer Verified	-
Accessibility Comment 2025	Adequate accessibility to key local services, transport, and employment opportunities.

Site Access RAG Assessment 2025	-
Site Access Officer Comment 2025	-
Site Access RAG Assessment 2023	-
Site Access Officer Comment 2023	-
Site Access RAG Assessment 2021	Red
Site Access Officer Comment 2021	The site appears unable to provide suitable inter vehicle visibility splays from anywhere along the site boundary to the adopted public highway.
Transport and Roads RAG Assessment 2025	-
Transport and Roads Guideline Comments 2025	-
Transport and Roads RAG Assessment 2023	-
Transport and Roads Guideline Comments 2023	-
Transport and Roads RAG Assessment 2021	Amber
Transport and Roads Guideline Comments 2021	Any potential impact on the functioning of trunk roads and/or local roads could be reasonably mitigated.
Noise, Vibration, Odour and Light Pollution RAG Assessment 2025	-
Noise, Vibration, Odour and Light Pollution Guideline Comments 2025	-
Noise, Vibration, Odour and Light Pollution RAG Assessment 2023	-
Noise, Vibration, Odour and Light Pollution Guideline Comments 2023	-
Noise, Vibration, Odour and Light Pollution RAG Assessment 2021	Green
Noise, Vibration, Odour and Light Pollution Guideline Comments 2021	The site is capable of being developed to provide healthy internal and external environments in regard to noise / vibration/ odour/ Light Pollution after careful site layout, design and mitigation.
AQMA RAG Assessment 2025	-
Air Quality Officer Comment 2025	-
AQMA RAG Assessment 2023	-
Air Quality Officer Comment 2023	-

AQMA RAG Assessment 2021	Green
Air Quality Officer Comment 2021	Site does not lie within an AQMA. Minimal traffic impact on AQMA.
Contaminated Land RAG Assessment 2025	-
Contaminated Land Officer Comments 2025	-
Contaminated Land RAG Assessment 2023	-
Contaminated Land Officer Comments 2023	-
Contaminated Land RAG Assessment 2021	Amber
Contaminated Land Officer Comments 2021	Previous agricultural land use. Potential for historic contamination, conditions required.
Overall Suitability Score	Red
Further constraints	-
Agricultural Land Classification Grade 1	55.74
Agricultural Land Classification Grade 2	0
Agricultural Land Classification Grade 3	0
Agricultural Land Classification Grade 4	0
Agricultural Land Classification Non Agricultural	0
Agricultural Land Classification Urban	44.26
Source Protection Zone	0
Highways England Zones	A14 CNB
Available	-
Is the site controlled by a developer or landowner who has expressed an intention to develop?	The site was submitted by the landowner and/or site promoter who has confirmed that the site is available for development in the timescales indicated.
Are there known legal or ownership impediments to development?	No
Is there planning permission to develop the site?	No relevant recent planning history
When will the site be available for development?	0-5 Years
Available RAG	Green
Achievable	-

Is there a reasonable prospect that the site will be developed?	The land has been promoted by the landowner and or developer and is known to be available for development. The site has a low existing use value and residential development is likely to be economically viable at an appropriate density.
Achievable RAG	Green
Capacity	-
Prevailing Density (weighted) (dwellings per ha)	30
Residential capacity at prevailing density	48
Estimated employment space (m2)	0
Estimated start date	0-5 Years
Estimated annual build-out rate (pa)	40-75
Development completion timescales (years)	0-5 Years

Land west of Beach Road, Cottenham assessment



A map of Land west of Beach Road, Cottenham

Site information	-
Site ID	115473
HELAA Site ID	59409
Suitable Site Area (ha)	3.74290184230944
Ward/Parish	Cottenham
Greenfield or Previously Developed?	Greenfield
Category of site	Dispersal: Villages
Category of settlement	Within or adjacent to Rural Centre
Current use(s)	-
Proposed development	Residential
Proposed employment floorspace (m2)	0
Proposed residential capacity	80
Suitability	-
Adopted Development Plan Policies RAG 2025	Amber

Adopted Development Plan Policies Comment 2025	Development of the site has some potential policy constraints, but these could be overcome through the planning application process.
Flood Risk RAG Assessment 2025	Amber
Flood Risk Officer Comment 2025	Flood Zone: Wholly in Flood Zone 1. Surface Water Flooding: 1% lies in a 1 in 30 year event. 7% lies in a 1 in 100 year event. 20% lies in a 1 in 1000 year event
Flood Risk RAG Assessment 2023	Amber
Flood Risk Officer Comment 2023	-
Flood Risk RAG Assessment 2021	-
Flood Risk Officer Comment 2021	-
Landscape RAG Assessment 2025	-
Landscape Comment 2025	-
Landscape RAG Assessment 2023	Red
Landscape Comment 2023	The site is a small field abutting the southern edge of the Village, next to the edge of the Conservation area and outside the Development Framework. The site is inside the greenbelt. Development of the site would change the character of the southern edge of the village, removing part of the open fields which surround the village edge and blocking views towards the countryside. The changes would be out of character with the surrounding landscape and so the RAG rating is red.
Landscape RAG Assessment 2021	-
Landscape Comment 2021	-
Biodiversity and Geodiversity RAG Assessment 2025	-
Biodiversity and Geodiversity Officer Comments 2025	-
Biodiversity and Geodiversity Guideline Comments 2025	-
Biodiversity and Geodiversity RAG Assessment 2023	Amber
Biodiversity and Geodiversity Officer Comments 2023	Discharge to ground or surface water of more than 20m ³ per day would require consultation with Natural England. The site contains traditional orchard Priority habitat, albeit some areas listed has been historically turned into arable land. The arable land on site is likely to contain limited ecological value, but may contain potential to support breeding and wintering populations of farmland birds.
Biodiversity and Geodiversity Guideline Comments 2023	Development of the site may have a detrimental impact on a designated site, or those with a regional or local protection but the impact could be reasonably mitigated or compensated.

Biodiversity and Geodiversity RAG Assessment 2021	-
Biodiversity and Geodiversity Officer Comments 2021	-
Biodiversity and Geodiversity Guideline Comments 2021	-
Policy RAG Rating 2025	Amber
Policy Officer Comment 2025	Within 50m of Amenity Green Space. Within 50m of Informal Open Space. Within 50m of Protected Open Space. Development of the site may have a detrimental impact on a peripheral open space designation, but the impact could be reasonably mitigated or compensated.
Policy RAG Rating 2023	Amber
Policy Officer Comment 2023	Site includes protected open space designation. Development of the site may have a detrimental impact on the protected open space designation, but the impact could be reasonably mitigated or compensated.
Policy RAG Rating 2021	-
Policy Officer Comments 2021	-
Historic Environment RAG Assessment 2025	-
Historic Environment Comments 2025	-
Historic Environment RAG Assessment 2023	Amber
Historic Environment Comments 2023	The Cottenham Conservation Area boundary joins a portion of the northern site boundary and it is considered that there are a number of NDHA in close proximity. The development site is rural in character and forms the setting of the conservation area. Development of the site could have a detrimental affect on these heritage assets but it is considered that the impact could be reasonably mitigated if handled sensitively.
Historic Environment RAG Assessment 2021	-
Historic Environment Comments 2021	-
Archaeology RAG Assessment 2025	-
Archaeology Officer Comment 2025	-
Archaeology RAG Assessment 2023	Amber
Archaeology Officer Comment 2023	Saxon and medieval settlement is recorded to the immediate north
Archaeology RAG Assessment 2021	-
Archaeology Officer Comment 2021	-

Accessibility RAG Assessment 2025 - Automated	Amber
Accessibility RAG Assessment 2025 - Officer Verified	-
Accessibility Comment 2025	Adequate accessibility to key local services, transport, and employment opportunities. Proposed development would not require delivery of accompanying key services.
Site Access RAG Assessment 2025	-
Site Access Officer Comment 2025	-
Site Access RAG Assessment 2023	Amber
Site Access Officer Comment 2023	The proposed site is acceptable in principle, subject to detailed design at a planning application stage.
Site Access RAG Assessment 2021	-
Site Access Officer Comment 2021	-
Transport and Roads RAG Assessment 2025	-
Transport and Roads Guideline Comments 2025	-
Transport and Roads RAG Assessment 2023	Amber
Transport and Roads Guideline Comments 2023	The site is relatively remote from existing passenger transport infrastructure and will therefore require high quality Non-Motorised User facilities to link into the Guided Busway and links into other local Non-Motorised User facilities. The site will potentially impact on local junctions and will therefore require a robust Travel Plan.
Transport and Roads RAG Assessment 2021	-
Transport and Roads Guideline Comments 2021	-
Noise, Vibration, Odour and Light Pollution RAG Assessment 2025	-
Noise, Vibration, Odour and Light Pollution Guideline Comments 2025	-
Noise, Vibration, Odour and Light Pollution RAG Assessment 2023	Amber
Noise, Vibration, Odour and Light Pollution Guideline Comments 2023	The proposed site will be affected by road traffic noise from nearby main roads but is acceptable in principle subject to appropriate detailed design considerations and mitigation. Detailed site specific assessments will be required for any future planning applications at this location.
Noise, Vibration, Odour and Light Pollution RAG Assessment 2021	-

Noise, Vibration, Odour and Light Pollution Guideline Comments 2021	-
AQMA RAG Assessment 2025	-
Air Quality Officer Comment 2025	-
AQMA RAG Assessment 2023	Amber
Air Quality Officer Comment 2023	The site is located outside AQMA but there is potential for an impact on AQMA which will require inherent / intrinsic designed in Air Quality mitigation.
AQMA RAG Assessment 2021	-
Air Quality Officer Comment 2021	-
Contaminated Land RAG Assessment 2025	-
Contaminated Land Officer Comments 2025	-
Contaminated Land RAG Assessment 2023	Amber
Contaminated Land Officer Comments 2023	The site has the potential for historic contamination and, therefore, planning conditions will be required.
Contaminated Land RAG Assessment 2021	-
Contaminated Land Officer Comments 2021	-
Overall Suitability Score	Red
Further constraints	-
Agricultural Land Classification Grade 1	0.2
Agricultural Land Classification Grade 2	0
Agricultural Land Classification Grade 3	0
Agricultural Land Classification Grade 4	0
Agricultural Land Classification Non Agricultural	0
Agricultural Land Classification Urban	99.8
Source Protection Zone	0
Highways England Zones	A14 CNB
Available	-
Is the site controlled by a developer or landowner who has expressed an intention to develop?	The site was submitted by the landowner and/or site promoter who has confirmed that the site is available for development in the timescales indicated.

Are there known legal or ownership impediments to development?	No
Is there planning permission to develop the site?	No relevant recent planning history
When will the site be available for development?	0-5 Years
Available RAG	Green
Achievable	-
Is there a reasonable prospect that the site will be developed?	The land has been promoted by the landowner and or developer and is known to be available for development. The site has a low existing use value and residential development is likely to be economically viable at an appropriate density.
Achievable RAG	Green
Capacity	-
Prevailing Density (weighted) (dwellings per ha)	30
Residential capacity at prevailing density	90
Estimated employment space (m2)	0
Estimated start date	0-5 Years
Estimated annual build-out rate (pa)	40-75
Development completion timescales (years)	0-5 Years

Land off Beach Road, Cottenham assessment



A map of Land off Beach Road, Cottenham

Site information	-
Site ID	115474
HELAA Site ID	51618
Suitable Site Area (ha)	1.17141019975896
Ward/Parish	Cottenham
Greenfield or Previously Developed?	Greenfield
Category of site	Dispersal: Villages
Category of settlement	Not within or adjacent to an existing settlement
Current use(s)	-
Proposed development	Residential
Proposed employment floorspace (m2)	0
Proposed residential capacity	20
Suitability	-
Adopted Development Plan Policies RAG 2025	Amber

Adopted Development Plan Policies Comment 2025	Development of the site has some potential policy constraints, but these could be overcome through the planning application process.
Flood Risk RAG Assessment 2025	Amber
Flood Risk Officer Comment 2025	Flood Zone: Wholly in Flood Zone 1. Surface Water Flooding: 1% lies in a 1 in 30 year event. 10% lies in a 1 in 100 year event. 19% lies in a 1 in 1000 year event
Flood Risk RAG Assessment 2023	-
Flood Risk Officer Comment 2023	-
Flood Risk RAG Assessment 2021	Amber
Flood Risk Officer Comment 2021	The site contains areas at high, or medium risk from surface water flooding and/or the site contains some land in Flood Zones 2 and/or 3 but there is sufficient land in Flood Zone 1 to accommodate at least 5 additional dwellings or an increase of 500 square metres of employment floorspace.
Landscape RAG Assessment 2025	-
Landscape Comment 2025	-
Landscape RAG Assessment 2023	-
Landscape Comment 2023	-
Landscape RAG Assessment 2021	Red
Landscape Comment 2021	Development upon this site would have a significant adverse impact upon the landscape character. Residential units would be incongruous, not reflect the existing settlement pattern and an encroachment into the landscape. Even with a significant reduction in residential units landscape mitigation is unlikely to reduce adverse impacts and the measures themselves would appear inconsistent with the surrounding landscape character. The isolation the site has from nearby carriageways further exacerbates this assessment of development potential for this site.
Biodiversity and Geodiversity RAG Assessment 2025	-
Biodiversity and Geodiversity Officer Comments 2025	-
Biodiversity and Geodiversity Guideline Comments 2025	-
Biodiversity and Geodiversity RAG Assessment 2023	-
Biodiversity and Geodiversity Officer Comments 2023	-

Biodiversity and Geodiversity Guideline Comments 2023	-
Biodiversity and Geodiversity RAG Assessment 2021	Amber
Biodiversity and Geodiversity Officer Comments 2021	Discharge to surface or ground water of more than 20m ³ per day would require consultation with Natural England. Boundary drain and hedgerows may qualify as Habitats of Principal Importance/be of high ecological value. Arable habitats may be of low ecological importance, but may support farmland bird populations.
Biodiversity and Geodiversity Guideline Comments 2021	Development of the site may have a detrimental impact on a designated site, or those with a regional or local protection but the impact could be reasonably mitigated or compensated.
Policy RAG Rating 2025	-
Policy Officer Comment 2025	-
Policy RAG Rating 2023	-
Policy Officer Comment 2023	-
Policy RAG Rating 2021	Green
Policy Officer Comments 2021	Site is not on protected open space designation. Any impact of the proposed development could be reasonably mitigated or compensated.
Historic Environment RAG Assessment 2025	-
Historic Environment Comments 2025	-
Historic Environment RAG Assessment 2023	-
Historic Environment Comments 2023	-
Historic Environment RAG Assessment 2021	Green
Historic Environment Comments 2021	Development of the site would have either a neutral or positive impact, but importantly not have a detrimental impact on any designated or non-designated heritage assets.
Archaeology RAG Assessment 2025	-
Archaeology Officer Comment 2025	-
Archaeology RAG Assessment 2023	-
Archaeology Officer Comment 2023	-
Archaeology RAG Assessment 2021	Amber
Archaeology Officer Comment 2021	Located within the extent of the Saxon and medieval extent of the village
Accessibility RAG Assessment 2025 - Automated	Amber

Accessibility RAG Assessment 2025 - Officer Verified	-
Accessibility Comment 2025	Adequate accessibility to key local services, transport, and employment opportunities.
Site Access RAG Assessment 2025	-
Site Access Officer Comment 2025	-
Site Access RAG Assessment 2023	-
Site Access Officer Comment 2023	-
Site Access RAG Assessment 2021	Red
Site Access Officer Comment 2021	The proposed site does not to have a direct link to the adopted public highway.
Transport and Roads RAG Assessment 2025	-
Transport and Roads Guideline Comments 2025	-
Transport and Roads RAG Assessment 2023	-
Transport and Roads Guideline Comments 2023	-
Transport and Roads RAG Assessment 2021	Green
Transport and Roads Guideline Comments 2021	Development of the site will not have a detrimental impact on the functioning of trunk roads and/or local roads.
Noise, Vibration, Odour and Light Pollution RAG Assessment 2025	-
Noise, Vibration, Odour and Light Pollution Guideline Comments 2025	-
Noise, Vibration, Odour and Light Pollution RAG Assessment 2023	-
Noise, Vibration, Odour and Light Pollution Guideline Comments 2023	-
Noise, Vibration, Odour and Light Pollution RAG Assessment 2021	Green
Noise, Vibration, Odour and Light Pollution Guideline Comments 2021	The site is capable of being developed to provide healthy internal and external environments in regard to noise / vibration/ odour/ Light Pollution after careful site layout, design and mitigation.
AQMA RAG Assessment 2025	-
Air Quality Officer Comment 2025	-

AQMA RAG Assessment 2023	-
Air Quality Officer Comment 2023	-
AQMA RAG Assessment 2021	Green
Air Quality Officer Comment 2021	Site does not lie within an AQMA. Minimal traffic impact on AQMA.
Contaminated Land RAG Assessment 2025	-
Contaminated Land Officer Comments 2025	-
Contaminated Land RAG Assessment 2023	-
Contaminated Land Officer Comments 2023	-
Contaminated Land RAG Assessment 2021	Amber
Contaminated Land Officer Comments 2021	Previous agricultural land use. Potential for historic contamination, conditions required.
Overall Suitability Score	Red
Further constraints	-
Agricultural Land Classification Grade 1	0.53
Agricultural Land Classification Grade 2	0
Agricultural Land Classification Grade 3	0
Agricultural Land Classification Grade 4	0
Agricultural Land Classification Non Agricultural	0
Agricultural Land Classification Urban	99.47
Source Protection Zone	0
Highways England Zones	A14 CNB
Available	-
Is the site controlled by a developer or landowner who has expressed an intention to develop?	The site was submitted by the landowner and/or site promoter who has confirmed that the site is available for development in the timescales indicated.
Are there known legal or ownership impediments to development?	No
Is there planning permission to develop the site?	No relevant recent planning history
When will the site be available for development?	0-5 Years

Available RAG	Green
Achievable	-
Is there a reasonable prospect that the site will be developed?	The land has been promoted by the landowner and or developer and is known to be available for development. The site has a low existing use value and residential development is likely to be economically viable at an appropriate density.
Achievable RAG	Green
Capacity	-
Prevailing Density (weighted) (dwellings per ha)	30
Residential capacity at prevailing density	32
Estimated employment space (m2)	0
Estimated start date	0-5 Years
Estimated annual build-out rate (pa)	40-75
Development completion timescales (years)	0-5 Years

Land to the south west Short Drove, Cottenham assessment



A map of Land to the south west Short Drove, Cottenham

Site information	-
Site ID	115475
HELAA Site ID	51583
Suitable Site Area (ha)	1.84244143729393
Ward/Parish	Cottenham
Greenfield or Previously Developed?	Greenfield
Category of site	Dispersal: Villages
Category of settlement	Not within or adjacent to an existing settlement
Current use(s)	-
Proposed development	Residential
Proposed employment floorspace (m2)	0
Proposed residential capacity	36
Suitability	-
Adopted Development Plan Policies RAG 2025	Amber

Adopted Development Plan Policies Comment 2025	Development of the site has some potential policy constraints, but these could be overcome through the planning application process.
Flood Risk RAG Assessment 2025	Amber
Flood Risk Officer Comment 2025	Flood Zone: Wholly in Flood Zone 1. Surface Water Flooding: 9% lies in a 1 in 30 year event. 2% lies in a 1 in 100 year event. 4% lies in a 1 in 1000 year event
Flood Risk RAG Assessment 2023	-
Flood Risk Officer Comment 2023	-
Flood Risk RAG Assessment 2021	Amber
Flood Risk Officer Comment 2021	The site contains areas at high, or medium risk from surface water flooding and/or the site contains some land in Flood Zones 2 and/or 3 but there is sufficient land in Flood Zone 1 to accommodate at least 5 additional dwellings or an increase of 500 square metres of employment floorspace.
Landscape RAG Assessment 2025	-
Landscape Comment 2025	-
Landscape RAG Assessment 2023	-
Landscape Comment 2023	-
Landscape RAG Assessment 2021	Red
Landscape Comment 2021	The site is a small rectangular field in a remote setting, accessed via a narrow unpaved track called Short Drove. The site is not particularly visible from surrounding areas due to the level of enclosure and remoteness from any publicly accessible roads. This remoteness would make the siting of development of poor quality and disconnected from the village of Cottenham.
Biodiversity and Geodiversity RAG Assessment 2025	-
Biodiversity and Geodiversity Officer Comments 2025	-
Biodiversity and Geodiversity Guideline Comments 2025	-
Biodiversity and Geodiversity RAG Assessment 2023	-
Biodiversity and Geodiversity Officer Comments 2023	-
Biodiversity and Geodiversity Guideline Comments 2023	-

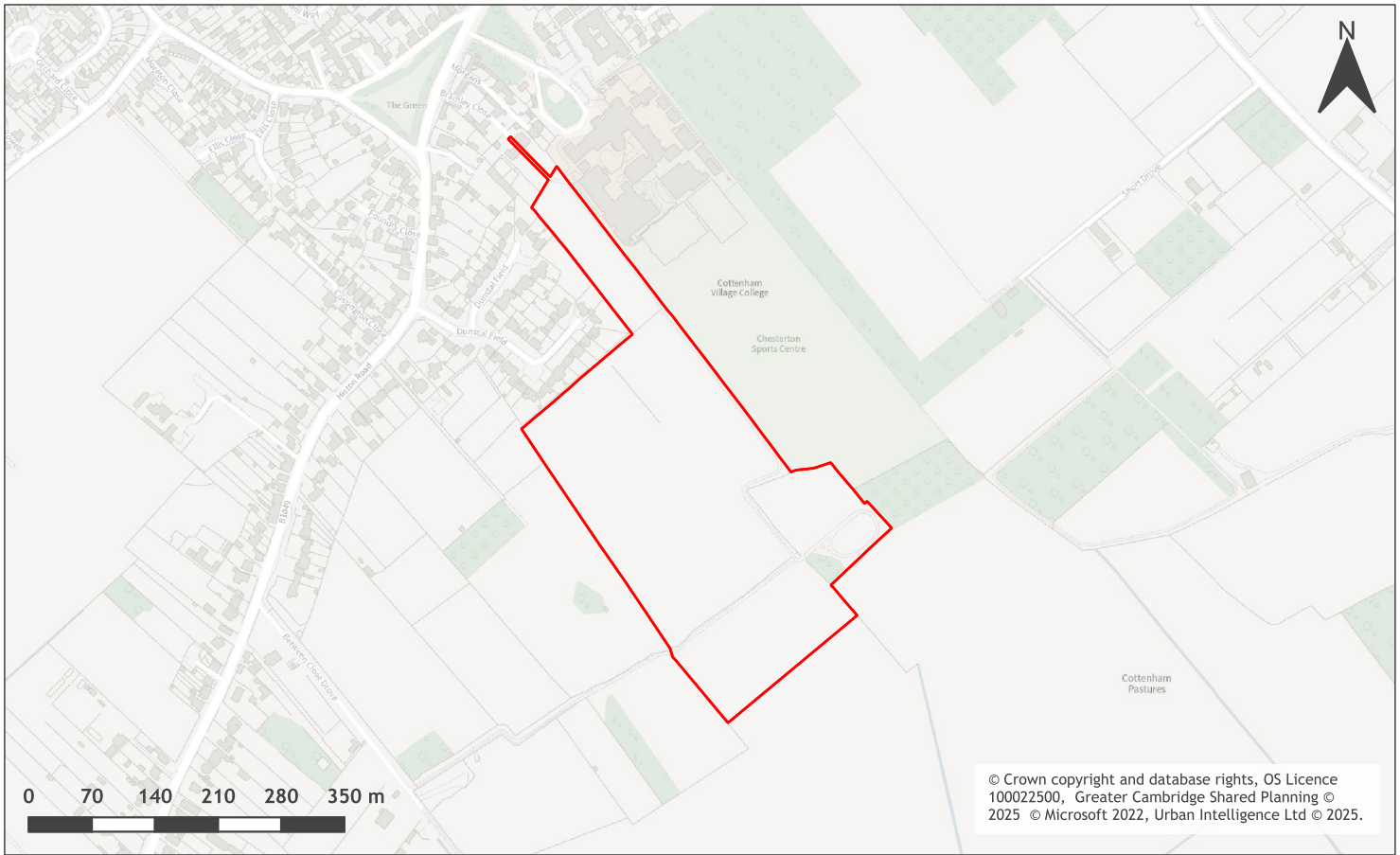
Biodiversity and Geodiversity RAG Assessment 2021	Amber
Biodiversity and Geodiversity Officer Comments 2021	Discharge to ground or surface water of more than 20m ³ /day would require consultation with Natural England. Boundary hedgerows and watercourse may qualify as Habitats of Principal Importance/be of high ecological value and support protected or notable species. Grassland quality will need to be assessed. Applications may find provision of a 10% net gain in biodiversity difficult within their red line boundaries and may need to find off-site compensation to comply with up-coming National legislation and developing local policies.
Biodiversity and Geodiversity Guideline Comments 2021	Development of the site may have a detrimental impact on a designated site, or those with a regional or local protection but the impact could be reasonably mitigated or compensated.
Policy RAG Rating 2025	-
Policy Officer Comment 2025	-
Policy RAG Rating 2023	-
Policy Officer Comment 2023	-
Policy RAG Rating 2021	Green
Policy Officer Comments 2021	Site is not on protected open space designation. Any impact of the proposed development could be reasonably mitigated or compensated.
Historic Environment RAG Assessment 2025	-
Historic Environment Comments 2025	-
Historic Environment RAG Assessment 2023	-
Historic Environment Comments 2023	-
Historic Environment RAG Assessment 2021	Green
Historic Environment Comments 2021	Development of the site would not have a detrimental impact on any designated or non-designated heritage assets.
Archaeology RAG Assessment 2025	-
Archaeology Officer Comment 2025	-
Archaeology RAG Assessment 2023	-
Archaeology Officer Comment 2023	-
Archaeology RAG Assessment 2021	Amber
Archaeology Officer Comment 2021	Cropmarks of probable late prehistoric or Roman date are recorded in the vicinity
Accessibility RAG Assessment 2025 - Automated	Amber

Accessibility RAG Assessment 2025 - Officer Verified	-
Accessibility Comment 2025	Adequate accessibility to key local services, transport, and employment opportunities.
Site Access RAG Assessment 2025	-
Site Access Officer Comment 2025	-
Site Access RAG Assessment 2023	-
Site Access Officer Comment 2023	-
Site Access RAG Assessment 2021	Red
Site Access Officer Comment 2021	The proposed site does not to have a direct link to the adopted public highway.
Transport and Roads RAG Assessment 2025	-
Transport and Roads Guideline Comments 2025	-
Transport and Roads RAG Assessment 2023	-
Transport and Roads Guideline Comments 2023	-
Transport and Roads RAG Assessment 2021	Green
Transport and Roads Guideline Comments 2021	Development of the site will not have a detrimental impact on the functioning of trunk roads and/or local roads.
Noise, Vibration, Odour and Light Pollution RAG Assessment 2025	-
Noise, Vibration, Odour and Light Pollution Guideline Comments 2025	-
Noise, Vibration, Odour and Light Pollution RAG Assessment 2023	-
Noise, Vibration, Odour and Light Pollution Guideline Comments 2023	-
Noise, Vibration, Odour and Light Pollution RAG Assessment 2021	Green
Noise, Vibration, Odour and Light Pollution Guideline Comments 2021	The site is capable of being developed to provide healthy internal and external environments in regard to noise / vibration/ odour/ Light Pollution after careful site layout, design and mitigation.
AQMA RAG Assessment 2025	-
Air Quality Officer Comment 2025	-

AQMA RAG Assessment 2023	-
Air Quality Officer Comment 2023	-
AQMA RAG Assessment 2021	Green
Air Quality Officer Comment 2021	Site does not lie within an AQMA. Minimal traffic impact on AQMA.
Contaminated Land RAG Assessment 2025	-
Contaminated Land Officer Comments 2025	-
Contaminated Land RAG Assessment 2023	-
Contaminated Land Officer Comments 2023	-
Contaminated Land RAG Assessment 2021	Amber
Contaminated Land Officer Comments 2021	Previous agricultural land use. Potential for historic contamination, conditions required.
Overall Suitability Score	Red
Further constraints	-
Agricultural Land Classification Grade 1	100
Agricultural Land Classification Grade 2	0
Agricultural Land Classification Grade 3	0
Agricultural Land Classification Grade 4	0
Agricultural Land Classification Non Agricultural	0
Agricultural Land Classification Urban	0
Source Protection Zone	0
Highways England Zones	A14 CNB
Available	-
Is the site controlled by a developer or landowner who has expressed an intention to develop?	The site was submitted by the landowner and/or site promoter who has confirmed that the site is available for development in the timescales indicated.
Are there known legal or ownership impediments to development?	No
Is there planning permission to develop the site?	No relevant recent planning history
When will the site be available for development?	0-5 Years

Available RAG	Green
Achievable	-
Is there a reasonable prospect that the site will be developed?	The land has been promoted by the landowner and or developer and is known to be available for development. The site has a low existing use value and residential development is likely to be economically viable at an appropriate density.
Achievable RAG	Green
Capacity	-
Prevailing Density (weighted) (dwellings per ha)	30
Residential capacity at prevailing density	50
Estimated employment space (m2)	0
Estimated start date	0-5 Years
Estimated annual build-out rate (pa)	40-75
Development completion timescales (years)	0-5 Years

Land off 335 High Street, Cottenham assessment



A map of Land off 335 High Street, Cottenham

Site information	-
Site ID	115476
HELAA Site ID	40047
Suitable Site Area (ha)	10.0020214590929
Ward/Parish	Cottenham
Greenfield or Previously Developed?	Greenfield
Category of site	Dispersal: Villages
Category of settlement	Within or adjacent to Rural Centre
Current use(s)	-
Proposed development	Residential
Proposed employment floorspace (m2)	0
Proposed residential capacity	175
Suitability	-
Adopted Development Plan Policies RAG 2025	Amber

Adopted Development Plan Policies Comment 2025	Development of the site has some potential policy constraints, but these could be overcome through the planning application process.
Flood Risk RAG Assessment 2025	Amber
Flood Risk Officer Comment 2025	Flood Zone: Wholly in Flood Zone 1. Surface Water Flooding: 6% lies in a 1 in 30 year event. 5% lies in a 1 in 100 year event. 20% lies in a 1 in 1000 year event
Flood Risk RAG Assessment 2023	-
Flood Risk Officer Comment 2023	-
Flood Risk RAG Assessment 2021	Amber
Flood Risk Officer Comment 2021	The site is within flood zone 2 (taking into account climate change) and/or is within an area at high, medium or low risk from surface water flooding.
Landscape RAG Assessment 2025	-
Landscape Comment 2025	-
Landscape RAG Assessment 2023	-
Landscape Comment 2023	-
Landscape RAG Assessment 2021	Red
Landscape Comment 2021	The character of the village to the south is linear, with long rear gardens. Development of this site would create a large area of residential development in a cul-de-sac, which would alter the character of this settlement, close to the historic core. It is in a prominent location, jutting out into the countryside, which surrounds the site on all sides. This would alter the current rural character and setting of the village
Biodiversity and Geodiversity RAG Assessment 2025	-
Biodiversity and Geodiversity Officer Comments 2025	-
Biodiversity and Geodiversity Guideline Comments 2025	-
Biodiversity and Geodiversity RAG Assessment 2023	-
Biodiversity and Geodiversity Officer Comments 2023	-
Biodiversity and Geodiversity Guideline Comments 2023	-

Biodiversity and Geodiversity RAG Assessment 2021	Amber
Biodiversity and Geodiversity Officer Comments 2021	Application unlikely to require Natural England consultation. There are no apparent priority habitats within the site; however, there are buildings, grasslands, wooded areas, hedges, and wooded boundaries on site that are likely to have ecological value. Applications may find provision of a 10% net gain in biodiversity difficult within their red line boundaries given the density of development, and may need to find off-site compensation to comply with up-coming National legislation and developing local policies.
Biodiversity and Geodiversity Guideline Comments 2021	Development of the site would have a detrimental impact on designated sites, or those with a regional or local protection which cannot be reasonably mitigated or compensated as appropriate.
Policy RAG Rating 2025	-
Policy Officer Comment 2025	-
Policy RAG Rating 2023	-
Policy Officer Comment 2023	-
Policy RAG Rating 2021	Green
Policy Officer Comments 2021	Site is not on a protected open space designation, however there are some protected open space designations on periphery of the site. Development of the site may have a detrimental impact on the peripheral open space designation, but the impact could be reasonably mitigated or compensated.
Historic Environment RAG Assessment 2025	-
Historic Environment Comments 2025	-
Historic Environment RAG Assessment 2023	-
Historic Environment Comments 2023	-
Historic Environment RAG Assessment 2021	Amber
Historic Environment Comments 2021	If the entrance to the site needs alteration this could have a negative impact on the setting of the Listed Buildings near the entrance and the character and appearance of the Conservation Area. Development of the site could have a detrimental impact on a designated or non-designated heritage asset or the setting of a designated or non-designated heritage asset, but the impact could be reasonably mitigated.
Archaeology RAG Assessment 2025	-
Archaeology Officer Comment 2025	-
Archaeology RAG Assessment 2023	-
Archaeology Officer Comment 2023	-
Archaeology RAG Assessment 2021	Amber

Archaeology Officer Comment 2021	Located to the south of the medieval core of the historic village of Cottenham.
Accessibility RAG Assessment 2025 - Automated	Green
Accessibility RAG Assessment 2025 - Officer Verified	-
Accessibility Comment 2025	Good accessibility to key local services, transport, and employment opportunities. Proposed development would not require delivery of accompanying key services
Site Access RAG Assessment 2025	-
Site Access Officer Comment 2025	-
Site Access RAG Assessment 2023	-
Site Access Officer Comment 2023	-
Site Access RAG Assessment 2021	Red
Site Access Officer Comment 2021	The access link to the public highway is unsuitable to serve the number of units that are being proposed.
Transport and Roads RAG Assessment 2025	-
Transport and Roads Guideline Comments 2025	-
Transport and Roads RAG Assessment 2023	-
Transport and Roads Guideline Comments 2023	-
Transport and Roads RAG Assessment 2021	Amber
Transport and Roads Guideline Comments 2021	Any potential impact on the functioning of trunk roads and/or local roads could be reasonably mitigated.
Noise, Vibration, Odour and Light Pollution RAG Assessment 2025	-
Noise, Vibration, Odour and Light Pollution Guideline Comments 2025	-
Noise, Vibration, Odour and Light Pollution RAG Assessment 2023	-
Noise, Vibration, Odour and Light Pollution Guideline Comments 2023	-
Noise, Vibration, Odour and Light Pollution RAG Assessment 2021	Amber

Noise, Vibration, Odour and Light Pollution Guideline Comments 2021	The proposed site will be affected by road traffic noise from nearby main roads but is acceptable in principle subject to appropriate detailed design considerations and mitigation. Noise impacts from the nearby college will need assessment.
AQMA RAG Assessment 2025	-
Air Quality Officer Comment 2025	-
AQMA RAG Assessment 2023	-
Air Quality Officer Comment 2023	-
AQMA RAG Assessment 2021	Green
Air Quality Officer Comment 2021	Site does not lie within an AQMA. Minimal traffic impact on AQMA.
Contaminated Land RAG Assessment 2025	-
Contaminated Land Officer Comments 2025	-
Contaminated Land RAG Assessment 2023	-
Contaminated Land Officer Comments 2023	-
Contaminated Land RAG Assessment 2021	Amber
Contaminated Land Officer Comments 2021	Previous agricultural land use. Potential for historic contamination, conditions required.
Overall Suitability Score	Red
Further constraints	-
Agricultural Land Classification Grade 1	63.49
Agricultural Land Classification Grade 2	0
Agricultural Land Classification Grade 3	0
Agricultural Land Classification Grade 4	0
Agricultural Land Classification Non Agricultural	0
Agricultural Land Classification Urban	36.51
Source Protection Zone	0
Highways England Zones	A14 CNB
Available	-
Is the site controlled by a developer or landowner who has expressed an intention to develop?	The site was submitted by the landowner and/or site promoter who has confirmed that the site is available for development in the timescales indicated.

Are there known legal or ownership impediments to development?	No
Is there planning permission to develop the site?	No relevant recent planning history
When will the site be available for development?	0-5 Years
Available RAG	Green
Achievable	-
Is there a reasonable prospect that the site will be developed?	The land has been promoted by the landowner and or developer and is known to be available for development. The site has a low existing use value and residential development is likely to be economically viable at an appropriate density.
Achievable RAG	Green
Capacity	-
Prevailing Density (weighted) (dwellings per ha)	30
Residential capacity at prevailing density	150
Estimated employment space (m2)	0
Estimated start date	0-5 Years
Estimated annual build-out rate (pa)	40-75
Development completion timescales (years)	6-10 Years