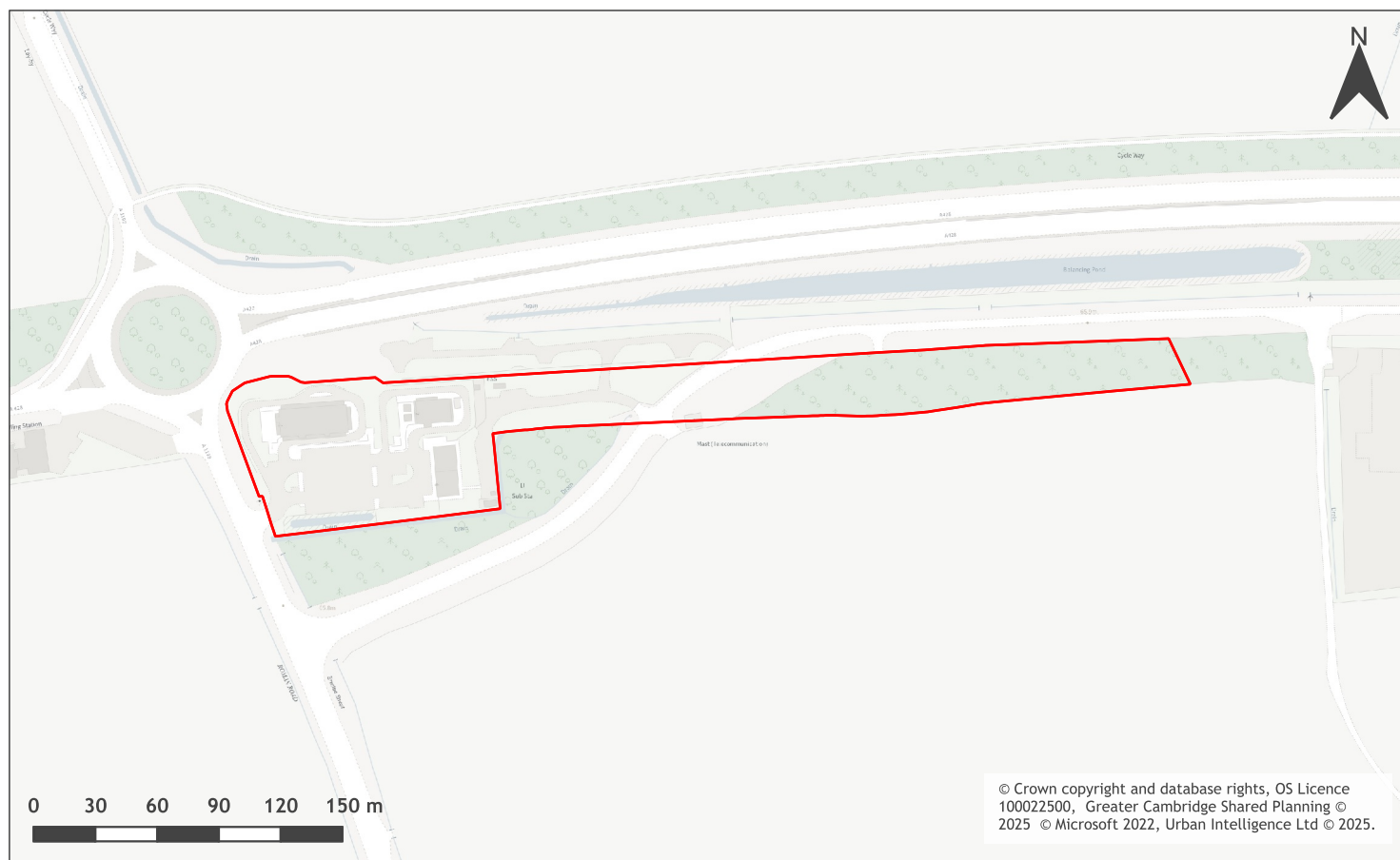


## Land to the east of Caxton Gibbet Services, Caxton assessment



A map of Land to the east of Caxton Gibbet Services, Caxton

Site information	-
Site ID	115583
HELAA Site ID	47945
Suitable Site Area (ha)	1.76435678565505
Ward/Parish	Cambourne
Greenfield or Previously Developed?	Greenfield
Category of site	Dispersal: Villages / Transport Corridor
Category of settlement	Not within or adjacent to an existing settlement
Current use(s)	-
Proposed development	Non-Residential
Proposed employment floorspace (m2)	2500
Proposed residential capacity	0
Suitability	-
Adopted Development Plan Policies RAG 2025	Amber

Adopted Development Plan Policies Comment 2025	Development of the site has some potential policy constraints, but these could be overcome through the planning application process.
Flood Risk RAG Assessment 2025	Amber
Flood Risk Officer Comment 2025	Flood Zone: Wholly in Flood Zone 1. Surface Water Flooding: 10% lies in a 1 in 30 year event. 6% lies in a 1 in 100 year event. 14% lies in a 1 in 1000 year event
Flood Risk RAG Assessment 2023	-
Flood Risk Officer Comment 2023	-
Flood Risk RAG Assessment 2021	Amber
Flood Risk Officer Comment 2021	The site contains areas at high, or medium risk from surface water flooding and/or the site contains some land in Flood Zones 2 and/or 3 but there is sufficient land in Flood Zone 1 to accommodate at least 5 additional dwellings or an increase of 500 square metres of employment floorspace.
Landscape RAG Assessment 2025	-
Landscape Comment 2025	-
Landscape RAG Assessment 2023	-
Landscape Comment 2023	-
Landscape RAG Assessment 2021	Amber
Landscape Comment 2021	A brownfield site and nearby to commercial uses. The woodland strip on site presents an opportunity afforded to existing screening, this must be retained, development must be limited to where existing development is located. The implementation of green infrastructure will be key along roadside and rural facing boundaries. An appropriate landscape strategy is to be implemented. Buildings should be sited appropriately to reduce their mass and minimise their impact on the wider landscape.
Biodiversity and Geodiversity RAG Assessment 2025	-
Biodiversity and Geodiversity Officer Comments 2025	-
Biodiversity and Geodiversity Guideline Comments 2025	-
Biodiversity and Geodiversity RAG Assessment 2023	-
Biodiversity and Geodiversity Officer Comments 2023	-
Biodiversity and Geodiversity Guideline Comments 2023	-

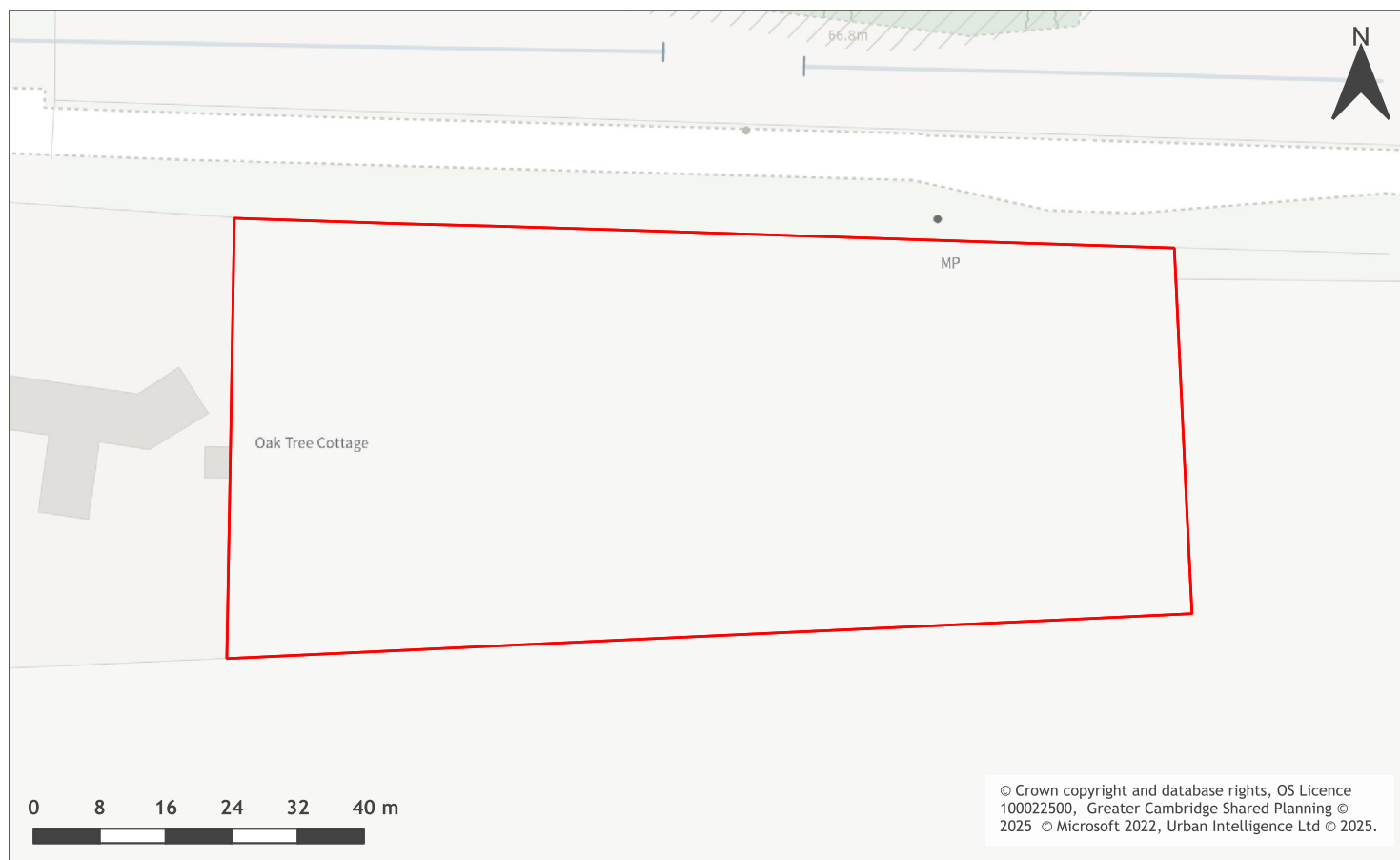
Biodiversity and Geodiversity RAG Assessment 2021	Amber
Biodiversity and Geodiversity Officer Comments 2021	Developments resulting in air pollution would require consultation with Natural England. Woodland to east and waterbodies may qualify as Habitats of Principal Importance/be of high ecological importance and support protected or notable species. Buildings may support roosting bats and waterbodies may support great crested newt (if suitable). Records of GCN within 30m. Applications may find provision of a 10% net gain in biodiversity difficult within their red line boundaries and may need to find offsite compensation to comply with up-coming National legislation and developing local policies.
Biodiversity and Geodiversity Guideline Comments 2021	Development of the site may have a detrimental impact on a designated site, or those with a regional or local protection but the impact could be reasonably mitigated or compensated.
Policy RAG Rating 2025	-
Policy Officer Comment 2025	-
Policy RAG Rating 2023	-
Policy Officer Comment 2023	-
Policy RAG Rating 2021	Green
Policy Officer Comments 2021	Site is not on protected open space designation. Any impact of the proposed development could be reasonably mitigated or compensated.
Historic Environment RAG Assessment 2025	-
Historic Environment Comments 2025	-
Historic Environment RAG Assessment 2023	-
Historic Environment Comments 2023	-
Historic Environment RAG Assessment 2021	Green
Historic Environment Comments 2021	Development of the site would have either a neutral or positive impact, but importantly not have a detrimental impact on any designated or non-designated heritage assets.
Archaeology RAG Assessment 2025	-
Archaeology Officer Comment 2025	-
Archaeology RAG Assessment 2023	-
Archaeology Officer Comment 2023	-
Archaeology RAG Assessment 2021	Green
Archaeology Officer Comment 2021	Previous evaluation has not identified significant archaeology

Accessibility RAG Assessment 2025 - Automated	Red
Accessibility RAG Assessment 2025 - Officer Verified	-
Accessibility Comment 2025	Inadequate accessibility to key local services, transport, and employment opportunities.
Site Access RAG Assessment 2025	-
Site Access Officer Comment 2025	-
Site Access RAG Assessment 2023	-
Site Access Officer Comment 2023	-
Site Access RAG Assessment 2021	Amber
Site Access Officer Comment 2021	The proposed site is acceptable in principle subject to detailed design.
Transport and Roads RAG Assessment 2025	-
Transport and Roads Guideline Comments 2025	-
Transport and Roads RAG Assessment 2023	-
Transport and Roads Guideline Comments 2023	-
Transport and Roads RAG Assessment 2021	Amber
Transport and Roads Guideline Comments 2021	Any potential impact on the functioning of trunk roads and/or local roads could be reasonably mitigated.
Noise, Vibration, Odour and Light Pollution RAG Assessment 2025	-
Noise, Vibration, Odour and Light Pollution Guideline Comments 2025	-
Noise, Vibration, Odour and Light Pollution RAG Assessment 2023	-
Noise, Vibration, Odour and Light Pollution Guideline Comments 2023	-
Noise, Vibration, Odour and Light Pollution RAG Assessment 2021	Green

Noise, Vibration, Odour and Light Pollution Guideline Comments 2021	The proposed site will be affected by road traffic noise from nearby main roads but is acceptable in principle subject to appropriate detailed design considerations and mitigation. The site is capable of being developed to provide healthy internal and external environments in regard to noise / vibration/ odour/ Light Pollution after careful site layout, design and mitigation.
AQMA RAG Assessment 2025	-
Air Quality Officer Comment 2025	-
AQMA RAG Assessment 2023	-
Air Quality Officer Comment 2023	-
AQMA RAG Assessment 2021	Green
Air Quality Officer Comment 2021	Not suggested for residential use therefore likely low traffic impact on AQMA
Contaminated Land RAG Assessment 2025	-
Contaminated Land Officer Comments 2025	-
Contaminated Land RAG Assessment 2023	-
Contaminated Land Officer Comments 2023	-
Contaminated Land RAG Assessment 2021	Amber
Contaminated Land Officer Comments 2021	Previous use of the site is as Military Land. Potential for historic contamination, conditions required.
Overall Suitability Score	Red
Further constraints	-
Agricultural Land Classification Grade 1	0
Agricultural Land Classification Grade 2	100
Agricultural Land Classification Grade 3	0
Agricultural Land Classification Grade 4	0
Agricultural Land Classification Non Agricultural	0
Agricultural Land Classification Urban	0
Source Protection Zone	0
Highways England Zones	A428
Available	-

Is the site controlled by a developer or landowner who has expressed an intention to develop?	The site was submitted by the landowner and/or site promoter who has confirmed that the site is available for development in the timescales indicated.
Are there known legal or ownership impediments to development?	No
Is there planning permission to develop the site?	No relevant recent planning history
When will the site be available for development?	0-5 Years
Available RAG	Green
Achievable	-
Is there a reasonable prospect that the site will be developed?	The land has been promoted by the landowner and or developer and is known to be available for development. The site has a low existing use value and non-residential development is likely to be economically viable at an appropriate density.
Achievable RAG	Green
Capacity	-
Prevailing Density (weighted) (dwellings per ha)	30
Residential capacity at prevailing density	48
Estimated employment space (m2)	2500
Estimated start date	0-5 Years
Estimated annual build-out rate (pa)	-
Development completion timescales (years)	0-5 Years

## Land at Oak Tree Cottage, Cambridge Road, Caxton assessment



A map of Land at Oak Tree Cottage, Cambridge Road, Caxton

Site information	-
Site ID	115584
HELAA Site ID	40290
Suitable Site Area (ha)	0.563831250951184
Ward/Parish	Cambourne
Greenfield or Previously Developed?	Greenfield
Category of site	Dispersal: Villages
Category of settlement	Not within or adjacent to an existing settlement
Current use(s)	-
Proposed development	Residential
Proposed employment floorspace (m2)	0
Proposed residential capacity	5
Suitability	-
Adopted Development Plan Policies RAG 2025	Amber

Adopted Development Plan Policies Comment 2025	Development of the site has some potential policy constraints, but these could be overcome through the planning application process.
Flood Risk RAG Assessment 2025	Amber
Flood Risk Officer Comment 2025	Flood Zone: Wholly in Flood Zone 1. Surface Water Flooding: 20% lies in a 1 in 30 year event. 3% lies in a 1 in 100 year event. 11% lies in a 1 in 1000 year event
Flood Risk RAG Assessment 2023	-
Flood Risk Officer Comment 2023	-
Flood Risk RAG Assessment 2021	Amber
Flood Risk Officer Comment 2021	The site is within flood zone 2 (taking into account climate change) and/or is within an area at high, medium or low risk from surface water flooding.
Landscape RAG Assessment 2025	-
Landscape Comment 2025	-
Landscape RAG Assessment 2023	-
Landscape Comment 2023	-
Landscape RAG Assessment 2021	Red
Landscape Comment 2021	The site is a grass field on the edge of a linear row of residential properties. Existing adjacent sites are generally large plots for individual units and the development of 5no. residential properties is likely to have an adverse effect upon this intrinsic rural character.
Biodiversity and Geodiversity RAG Assessment 2025	-
Biodiversity and Geodiversity Officer Comments 2025	-
Biodiversity and Geodiversity Guideline Comments 2025	-
Biodiversity and Geodiversity RAG Assessment 2023	-
Biodiversity and Geodiversity Officer Comments 2023	-
Biodiversity and Geodiversity Guideline Comments 2023	-
Biodiversity and Geodiversity RAG Assessment 2021	Amber



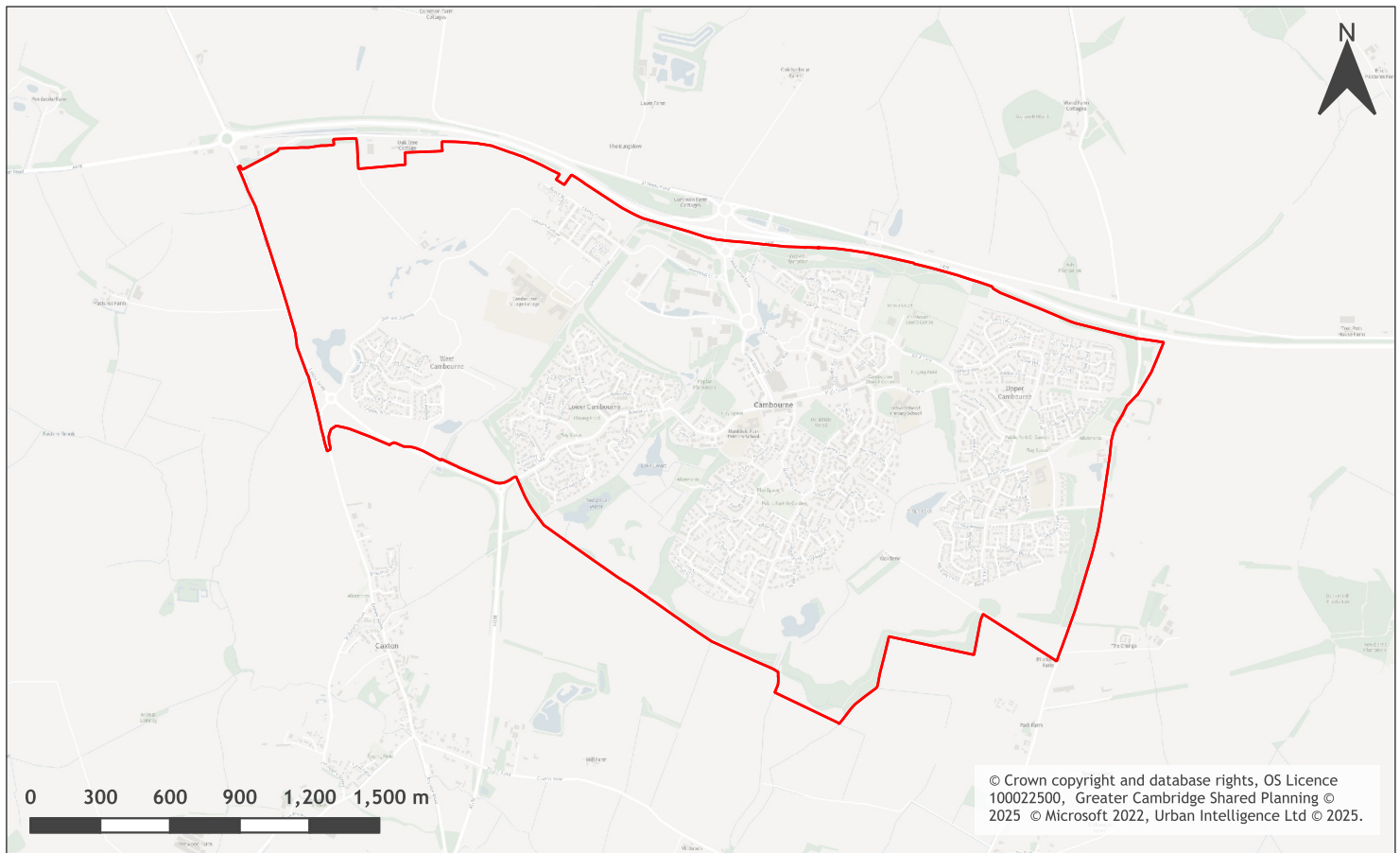
Biodiversity and Geodiversity Officer Comments 2021	All new housing developments will require assessment of increased visitor pressure on nearby SSSI. There are no apparent priority habitats within the site; however, there are grasslands, wooded areas, hedges, and wooded boundaries on site that are likely to have ecological value. Applications may find provision of a 10% net gain in biodiversity difficult within their redline boundaries and may need to find off-site compensation to comply with up-coming National legislation and developing local policies.
Biodiversity and Geodiversity Guideline Comments 2021	Development of the site may have a detrimental impact on a designated site, or those with a regional or local protection but the impact could be reasonably mitigated or compensated.
Policy RAG Rating 2025	-
Policy Officer Comment 2025	-
Policy RAG Rating 2023	-
Policy Officer Comment 2023	-
Policy RAG Rating 2021	Green
Policy Officer Comments 2021	Site is not on protected open space designation. Any impact of the proposed development could be reasonably mitigated or compensated.
Historic Environment RAG Assessment 2025	-
Historic Environment Comments 2025	-
Historic Environment RAG Assessment 2023	-
Historic Environment Comments 2023	-
Historic Environment RAG Assessment 2021	Amber
Historic Environment Comments 2021	Development has the potential to affect the setting of the Listed Church of St Peter & St Paul but this could be reasonably mitigated.
Archaeology RAG Assessment 2025	-
Archaeology Officer Comment 2025	-
Archaeology RAG Assessment 2023	-
Archaeology Officer Comment 2023	-
Archaeology RAG Assessment 2021	Green
Archaeology Officer Comment 2021	Development unlikely to have significant archaeological impact
Accessibility RAG Assessment 2025 - Automated	Red
Accessibility RAG Assessment 2025 - Officer Verified	-

Accessibility Comment 2025	Inadequate accessibility to key local services, transport, and employment opportunities.
Site Access RAG Assessment 2025	-
Site Access Officer Comment 2025	-
Site Access RAG Assessment 2023	-
Site Access Officer Comment 2023	-
Site Access RAG Assessment 2021	Amber
Site Access Officer Comment 2021	The proposed site is acceptable in principle subject to detailed design.
Transport and Roads RAG Assessment 2025	-
Transport and Roads Guideline Comments 2025	-
Transport and Roads RAG Assessment 2023	-
Transport and Roads Guideline Comments 2023	-
Transport and Roads RAG Assessment 2021	Green
Transport and Roads Guideline Comments 2021	Development of the site will not have a detrimental impact on the functioning of trunk roads and/or local roads.
Noise, Vibration, Odour and Light Pollution RAG Assessment 2025	-
Noise, Vibration, Odour and Light Pollution Guideline Comments 2025	-
Noise, Vibration, Odour and Light Pollution RAG Assessment 2023	-
Noise, Vibration, Odour and Light Pollution Guideline Comments 2023	-
Noise, Vibration, Odour and Light Pollution RAG Assessment 2021	Amber
Noise, Vibration, Odour and Light Pollution Guideline Comments 2021	The proposed site will be affected by road traffic noise from nearby main roads but is acceptable in principle subject to appropriate detailed design considerations and mitigation.
AQMA RAG Assessment 2025	-
Air Quality Officer Comment 2025	-
AQMA RAG Assessment 2023	-

Air Quality Officer Comment 2023	-
AQMA RAG Assessment 2021	Green
Air Quality Officer Comment 2021	Site does not lie within an AQMA. Minimal traffic impact on AQMA.
Contaminated Land RAG Assessment 2025	-
Contaminated Land Officer Comments 2025	-
Contaminated Land RAG Assessment 2023	-
Contaminated Land Officer Comments 2023	-
Contaminated Land RAG Assessment 2021	Amber
Contaminated Land Officer Comments 2021	Ex military land. Potential for contamination, conditions required.
Overall Suitability Score	Red
Further constraints	-
Agricultural Land Classification Grade 1	0
Agricultural Land Classification Grade 2	100
Agricultural Land Classification Grade 3	0
Agricultural Land Classification Grade 4	0
Agricultural Land Classification Non Agricultural	0
Agricultural Land Classification Urban	0
Source Protection Zone	0
Highways England Zones	A428
Available	-
Is the site controlled by a developer or landowner who has expressed an intention to develop?	The site was submitted by the landowner and/or site promoter who has confirmed that the site is available for development in the timescales indicated.
Are there known legal or ownership impediments to development?	No
Is there planning permission to develop the site?	No relevant recent planning history
When will the site be available for development?	0-5 Years
Available RAG	Green

Achievable	-
Is there a reasonable prospect that the site will be developed?	The land has been promoted by the landowner and or developer and is known to be available for development. The site has a low existing use value and residential development is likely to be economically viable at an appropriate density.
Achievable RAG	Green
Capacity	-
Prevailing Density (weighted) (dwellings per ha)	30
Residential capacity at prevailing density	16
Estimated employment space (m2)	0
Estimated start date	0-5 Years
Estimated annual build-out rate (pa)	40-75
Development completion timescales (years)	0-5 Years

## Cambourne assessment



A map of Cambourne

Site information	-
Site ID	116253
HELAA Site ID	OS220
Suitable Site Area (ha)	549.567526678628
Ward/Parish	Cambourne
Greenfield or Previously Developed?	Greenfield and Previously Developed Land
Category of site	Growth around transport nodes: Cambourne Area
Category of settlement	Within or adjacent to an existing settlement
Current use(s)	-
Proposed development	Mixed use
Proposed employment floorspace (m2)	34600
Proposed residential capacity	2720
Suitability	-
Adopted Development Plan Policies RAG 2025	Amber

Adopted Development Plan Policies Comment 2025	Development of the site has some potential policy constraints, but these could be overcome through the planning application process.
Flood Risk RAG Assessment 2025	Amber
Flood Risk Officer Comment 2025	Flood Zones: Part of the site is in Flood Zone 3 (<1%). Surface Water Flooding: 5% lies in a 1 in 30 year event, 3% lies in a 1 in 100 year event, 8% lies in a 1 in 1000 year event.
Flood Risk RAG Assessment 2023	-
Flood Risk Officer Comment 2023	-
Flood Risk RAG Assessment 2021	-
Flood Risk Officer Comment 2021	-
Landscape RAG Assessment 2025	Amber
Landscape Comment 2025	This is an extensive site, which includes the existing town of Cambourne and the permitted growth site of West Cambourne. There are wide, open views from and across the site from neighbouring areas due to the open nature of the agricultural fields and low-lying boundary hedgerows and topography. Development at West Cambourne and Cambourne Business Park have been considered through the planning application process. Any further development within the existing built up area on brownfield land is likely to be acceptable subject to detailed testing and mitigation measures to ensure there are no adverse impacts on landscape and townscape character as well as local and wider views.
Landscape RAG Assessment 2023	-
Landscape Comment 2023	-
Landscape RAG Assessment 2021	-
Landscape Comment 2021	-
Biodiversity and Geodiversity RAG Assessment 2025	Amber
Biodiversity and Geodiversity Officer Comments 2025	<p>All residential developments will require consideration of impact on nearby SSSIs. There is an extensive ecological network throughout the site, some of which is designated as a County Wildlife Site. Additionally, there are buildings, grasslands, woodland areas, hedges, and wooded boundaries on site that are likely to have ecological value. Provision of a 10% BNG may be difficult within the redline boundary.</p> <p>Development of the site may have a detrimental impact on a designated site, or those with a regional or local protection but the impact could be reasonably mitigated or compensated.</p>
Biodiversity and Geodiversity Guideline Comments 2025	-
Biodiversity and Geodiversity RAG Assessment 2023	-

Biodiversity and Geodiversity Officer Comments 2023	-
Biodiversity and Geodiversity Guideline Comments 2023	-
Biodiversity and Geodiversity RAG Assessment 2021	-
Biodiversity and Geodiversity Officer Comments 2021	-
Biodiversity and Geodiversity Guideline Comments 2021	-
Policy RAG Rating 2025	Amber
Policy Officer Comment 2025	<p>Within or Partially within Protected Open Space</p> <p>Within or Partially within Country Park</p> <p>Within or Partially within Local Green Space</p> <p>Within or Partially within Sports Facilities</p> <p>Site contains a number of open space designations. Any impact of the proposed development could be reasonably mitigated or compensated.</p>
Policy RAG Rating 2023	-
Policy Officer Comment 2023	-
Policy RAG Rating 2021	Amber
Policy Officer Comments 2021	Site includes protected open space. Development of the remaining site may have a detrimental impact on the designation, but the impact could be reasonably mitigated or compensated.
Historic Environment RAG Assessment 2025	Amber
Historic Environment Comments 2025	Whilst there are a number of heritage assets beyond the site, the impact of development on them and their setting will have (in part) been previously been considered as part of the planning permissions within the site. Further development within the site is not likely to have a detrimental impact on any designated or non-designated heritage assets.
Historic Environment RAG Assessment 2023	-
Historic Environment Comments 2023	-
Historic Environment RAG Assessment 2021	-

Historic Environment Comments 2021	-
Archaeology RAG Assessment 2025	Amber
Archaeology Officer Comment 2025	There is evidence of significant archaeology in the area and conditions have been applied to the permitted developments. Additional development on brownfield sites will require further investigation but archaeological remains may not remain given extensive recent development in this area.
Archaeology RAG Assessment 2023	-
Archaeology Officer Comment 2023	-
Archaeology RAG Assessment 2021	-
Archaeology Officer Comment 2021	-
Accessibility RAG Assessment 2025 - Automated	Green
Accessibility RAG Assessment 2025 - Officer Verified	-
Accessibility Comment 2025	Good accessibility to key local services, transport, and employment opportunities. Proposed development would not require delivery of accompanying key services
Site Access RAG Assessment 2025	Amber
Site Access Officer Comment 2025	The site is acceptable in principle, although a significant level of infrastructure would be required to encourage more sustainable transport links. It is unclear whether these sustainable transport links can be achieved within the local available constraints.
Site Access RAG Assessment 2023	-
Site Access Officer Comment 2023	-
Site Access RAG Assessment 2021	-
Site Access Officer Comment 2021	-
Transport and Roads RAG Assessment 2025	Amber
Transport and Roads Guideline Comments 2025	Any potential impact on the functioning of trunk roads and/or local roads could be reasonably mitigated. The development would need to provide mitigation to reduce the vehicle impact and encourage active travel and public transport use. Transport Assessments and Travel Plans required.
Transport and Roads RAG Assessment 2023	-
Transport and Roads Guideline Comments 2023	-
Transport and Roads RAG Assessment 2021	-



Transport and Roads Guideline Comments 2021	-
Noise, Vibration, Odour and Light Pollution RAG Assessment 2025	Amber
Noise, Vibration, Odour and Light Pollution Guideline Comments 2025	The site will be affected by road traffic noise from nearby main roads and potentially the proposed railway but is acceptable in principle subject to appropriate detailed design considerations and mitigation.
Noise, Vibration, Odour and Light Pollution RAG Assessment 2023	-
Noise, Vibration, Odour and Light Pollution Guideline Comments 2023	-
Noise, Vibration, Odour and Light Pollution RAG Assessment 2021	-
Noise, Vibration, Odour and Light Pollution Guideline Comments 2021	-
AQMA RAG Assessment 2025	Amber
Air Quality Officer Comment 2025	The site does not fall within an Air Quality Management Area (AQMA). However traffic mitigation measures may be necessary to offset impacts on designated AQMAs.
AQMA RAG Assessment 2023	-
Air Quality Officer Comment 2023	-
AQMA RAG Assessment 2021	-
Air Quality Officer Comment 2021	-
Contaminated Land RAG Assessment 2025	Amber
Contaminated Land Officer Comments 2025	Potential for historic contamination, conditions required.
Contaminated Land RAG Assessment 2023	-
Contaminated Land Officer Comments 2023	-
Contaminated Land RAG Assessment 2021	-
Contaminated Land Officer Comments 2021	-
Overall Suitability Score	Amber
Further constraints	-
Agricultural Land Classification Grade 1	0
Agricultural Land Classification Grade 2	99.97

Agricultural Land Classification Grade 3	0.03
Agricultural Land Classification Grade 4	0
Agricultural Land Classification Non Agricultural	0
Agricultural Land Classification Urban	0
Source Protection Zone	5.94
Highways England Zones	A428
Available	-
Is the site controlled by a developer or landowner who has expressed an intention to develop?	The site is in multiple land ownership, some of which is known to be currently available for development.
Are there known legal or ownership impediments to development?	No
Is there planning permission to develop the site?	Yes, planning permission was granted in 2017 for the development known as Cambourne West (S/2903/14/OL). This was for up to 2,350 homes, retail floor space, employment, community and leisure uses as well as new schools. In 2024, a planning application was submitted for the development of Cambourne High Sreet.
When will the site be available for development?	0-5 Years
Available RAG	Green
Achievable	-
Is there a reasonable prospect that the site will be developed?	The land has been promoted by the landowner and or developer and is known to be available for development. The site has a low existing use value and development is likely to be economically viable.
Achievable RAG	Green
Capacity	-
Prevailing Density (weighted) (dwellings per ha)	49.0065997480767
Residential capacity at prevailing density	13466
Estimated employment space (m2)	34600
Estimated start date	0-5 Years
Estimated annual build-out rate (pa)	225-230
Development completion timescales (years)	11-15 years