

AQMA RAG Assessment 2021	Amber
Air Quality Officer Comment 2021	Large site and lots of residential units - potential for AQMA traffic impact without mitigation. Site does not lie within an AQMA.
Contaminated Land RAG Assessment 2025	-
Contaminated Land Officer Comments 2025	-
Contaminated Land RAG Assessment 2023	-
Contaminated Land Officer Comments 2023	-
Contaminated Land RAG Assessment 2021	Amber
Contaminated Land Officer Comments 2021	Previous agricultural buildings and land use. Potential for historic contamination, conditions required.
Overall Suitability Score	Red
Further constraints	-
Agricultural Land Classification Grade 1	0
Agricultural Land Classification Grade 2	72.94
Agricultural Land Classification Grade 3	26.97
Agricultural Land Classification Grade 4	0
Agricultural Land Classification Non Agricultural	0
Agricultural Land Classification Urban	0
Source Protection Zone	92.16
Highways England Zones	South West
Available	-
Is the site controlled by a developer or landowner who has expressed an intention to develop?	The site was submitted by the landowner and/or site promoter who has confirmed that the site is available for development in the timescales indicated.
Are there known legal or ownership impediments to development?	Yes - There is an existing tenant on the site.
Is there planning permission to develop the site?	No relevant recent planning history
When will the site be available for development?	6-10 Years
Available RAG	Amber
Achievable	-

Is there a reasonable prospect that the site will be developed?	The land has been promoted by the landowner and or developer and is known to be available for development. The site has a low existing use value and residential development is likely to be economically viable at an appropriate density.
Achievable RAG	Green
Capacity	-
Prevailing Density (weighted) (dwellings per ha)	30
Residential capacity at prevailing density	4301
Estimated employment space (m2)	0
Estimated start date	6-10 Years
Estimated annual build-out rate (pa)	225-230
Development completion timescales (years)	11-15 Years

Land off Brook Road, Bassingbourn assessment



A map of Land off Brook Road, Bassingbourn

Site information	-
Site ID	116045
HELAA Site ID	40342
Suitable Site Area (ha)	6.59892532049979
Ward/Parish	Bassingbourn
Greenfield or Previously Developed?	Greenfield
Category of site	Dispersal: Villages
Category of settlement	Not within or adjacent to an existing settlement
Current use(s)	-
Proposed development	Residential
Proposed employment floorspace (m2)	0
Proposed residential capacity	140
Suitability	-
Adopted Development Plan Policies RAG 2025	Amber

Adopted Development Plan Policies Comment 2025	Development of the site has some potential policy constraints, but these could be overcome through the planning application process.
Flood Risk RAG Assessment 2025	Amber
Flood Risk Officer Comment 2025	Flood Zone: Partly in Flood Zone 3 (4%). Surface Water Flooding: 2% lies in a 1 in 1000 year event
Flood Risk RAG Assessment 2023	-
Flood Risk Officer Comment 2023	-
Flood Risk RAG Assessment 2021	Amber
Flood Risk Officer Comment 2021	The site is within flood zones 3a or 3b.
Landscape RAG Assessment 2025	-
Landscape Comment 2025	-
Landscape RAG Assessment 2023	Amber
Landscape Comment 2023	Additional supporting text and a concept masterplan have been submitted but don't include any specific information on landscape or change the scope of proposed development and so the assessment remains amber.
Landscape RAG Assessment 2021	Amber
Landscape Comment 2021	The site is an arable field south of Brook Road detached from the Development Framework Boundary, lying to the west of the Village College and Primary School. The irregular eastern boundary follows a brook/drain and is vegetated intermittently with hedging and trees. The site contributes to the rural character of the western entrance to the village; however, some development may be possible, subject to unit numbers, detailed design and a landscaping strategy to include appropriate tree/hedge planting to mitigate against potential adverse impacts.
Biodiversity and Geodiversity RAG Assessment 2025	-
Biodiversity and Geodiversity Officer Comments 2025	-
Biodiversity and Geodiversity Guideline Comments 2025	-
Biodiversity and Geodiversity RAG Assessment 2023	Amber
Biodiversity and Geodiversity Officer Comments 2023	No additional information has been provided in relation to ecology impacts and mitigation and therefore there is no change to the site assessment scoring. Based on the proposed masterplan, it is considered likely that a 10% net gain in biodiversity can be achieved.

Biodiversity and Geodiversity Guideline Comments 2023	Development of the site may have a detrimental impact on a designated site, or those with a regional or local protection but the impact could be reasonably mitigated or compensated.
Biodiversity and Geodiversity RAG Assessment 2021	Amber
Biodiversity and Geodiversity Officer Comments 2021	Application unlikely to require Natural England consultation. There is a watercourse adjacent to the eastern boundary that will require survey and possible mitigation. There are no other apparent priority habitats within the site; however, there are grasslands, wooded areas, hedges, and wooded boundaries on site that are likely to have ecological value. Applications may find provision of a 10% net gain in biodiversity difficult within their red line boundaries given the density of development and may need to find offsite compensation to comply with up-coming National legislation and developing local policies.
Biodiversity and Geodiversity Guideline Comments 2021	Development of the site would have a detrimental impact on designated sites, or those with a regional or local protection which cannot be reasonably mitigated or compensated as appropriate.
Policy RAG Rating 2025	-
Policy Officer Comment 2025	-
Policy RAG Rating 2023	-
Policy Officer Comment 2023	-
Policy RAG Rating 2021	Green
Policy Officer Comments 2021	Site is not on protected open space designation. Any impact of the proposed development could be reasonably mitigated or compensated.
Historic Environment RAG Assessment 2025	-
Historic Environment Comments 2025	-
Historic Environment RAG Assessment 2023	Green
Historic Environment Comments 2023	The revised information has submitted no additional comments regarding heritage assets. The RAG rating remains the same.
Historic Environment RAG Assessment 2021	Green
Historic Environment Comments 2021	Development of the site would have either a neutral or positive impact, but importantly not have a detrimental impact on any designated or non-designated heritage assets.
Archaeology RAG Assessment 2025	-
Archaeology Officer Comment 2025	-
Archaeology RAG Assessment 2023	Amber
Archaeology Officer Comment 2023	Based on the additional information provided, the assessment for the site remains unchanged as Amber as there is evidence of archaeology in the area that will require further investigation.
Archaeology RAG Assessment 2021	Amber

Archaeology Officer Comment 2021	Remains of prehistoric and Saxon date are recorded from excavations to the west.
Accessibility RAG Assessment 2025 - Automated	Green
Accessibility RAG Assessment 2025 - Officer Verified	-
Accessibility Comment 2025	Good accessibility to key local services, transport, and employment opportunities. Proposed development would not require delivery of accompanying key services
Site Access RAG Assessment 2025	-
Site Access Officer Comment 2025	-
Site Access RAG Assessment 2023	Amber
Site Access Officer Comment 2023	Based on the new information provided, the site access assessment has been changed to Amber. The proposed site is acceptable in principle, subject to detailed design at a planning application stage.
Site Access RAG Assessment 2021	Red
Site Access Officer Comment 2021	The proposed site does not to have a direct link to the adopted public highway. If over 100 dwellings two points of access are required to accord with the advice of the Cambridgeshire Fire and Rescue.
Transport and Roads RAG Assessment 2025	-
Transport and Roads Guideline Comments 2025	-
Transport and Roads RAG Assessment 2023	Amber
Transport and Roads Guideline Comments 2023	Based on the new information provided, the assessment scoring remains Amber as the site is relatively remote from existing passenger transport infrastructure so will require high quality passenger transport links to Cambridge and links into local non-motorised user facilities and will impact local junctions.
Transport and Roads RAG Assessment 2021	Amber
Transport and Roads Guideline Comments 2021	Any potential impact on the functioning of trunk roads and/or local roads could be reasonably mitigated.
Noise, Vibration, Odour and Light Pollution RAG Assessment 2025	-
Noise, Vibration, Odour and Light Pollution Guideline Comments 2025	-
Noise, Vibration, Odour and Light Pollution RAG Assessment 2023	Amber

Noise, Vibration, Odour and Light Pollution Guideline Comments 2023	New information provided has not changed the assessment. The proposed site will be affected by road traffic noise from nearby main roads but is acceptable in principle subject to appropriate detailed design considerations and mitigation. Detailed site specific assessments will be required for any future planning applications at this location.
Noise, Vibration, Odour and Light Pollution RAG Assessment 2021	Amber
Noise, Vibration, Odour and Light Pollution Guideline Comments 2021	The proposed site will be affected by road traffic noise from nearby main roads but is acceptable in principle subject to appropriate detailed design considerations and mitigation.
AQMA RAG Assessment 2025	-
Air Quality Officer Comment 2025	-
AQMA RAG Assessment 2023	Green
Air Quality Officer Comment 2023	The additional information provided does not significantly affect air quality issues or mitigation. Therefore the assessment of the site remains unchanged since the original assessment. The site does not lie within an AQMA and there will be minimal traffic impact on AQMA.
AQMA RAG Assessment 2021	Green
Air Quality Officer Comment 2021	Site does not lie within an AQMA. Minimal traffic impact on AQMA.
Contaminated Land RAG Assessment 2025	-
Contaminated Land Officer Comments 2025	-
Contaminated Land RAG Assessment 2023	Amber
Contaminated Land Officer Comments 2023	The additional information provided does not significantly affect environmental health issues or mitigation. Therefore the assessment of the site remains unchanged since the original assessment as this is a site previously in agricultural use with the potential for historic contamination and planning conditions will be required.
Contaminated Land RAG Assessment 2021	Amber
Contaminated Land Officer Comments 2021	Previous agricultural land use. Potential for historic contamination, conditions required.
Overall Suitability Score	Amber
Further constraints	-
Agricultural Land Classification Grade 1	0
Agricultural Land Classification Grade 2	100
Agricultural Land Classification Grade 3	0
Agricultural Land Classification Grade 4	0

Agricultural Land Classification Non Agricultural	0
Agricultural Land Classification Urban	0
Source Protection Zone	0
Highways England Zones	South West
Available	-
Is the site controlled by a developer or landowner who has expressed an intention to develop?	The site was submitted by the landowner and/or site promoter who has confirmed that the site is available for development in the timescales indicated.
Are there known legal or ownership impediments to development?	No
Is there planning permission to develop the site?	No relevant recent planning history
When will the site be available for development?	0-5 Years
Available RAG	Green
Achievable	-
Is there a reasonable prospect that the site will be developed?	The land has been promoted by the landowner and or developer and is known to be available for development. The site has a low existing use value and residential development is likely to be economically viable at an appropriate density.
Achievable RAG	Green
Capacity	-
Prevailing Density (weighted) (dwellings per ha)	30
Residential capacity at prevailing density	139
Estimated employment space (m2)	0
Estimated start date	0-5 Years
Estimated annual build-out rate (pa)	40-75
Development completion timescales (years)	0-5 Years

Land at Clear Farm, South End, Bassingbourn assessment



A map of Land at Clear Farm, South End, Bassingbourn

Site information	-
Site ID	116046
HELAA Site ID	40204
Suitable Site Area (ha)	1.97174780220459
Ward/Parish	Bassingbourn
Greenfield or Previously Developed?	Greenfield
Category of site	Dispersal: Villages
Category of settlement	Within or adjacent to Minor Rural Centre
Current use(s)	-
Proposed development	Residential
Proposed employment floorspace (m2)	0
Proposed residential capacity	59
Suitability	-
Adopted Development Plan Policies RAG 2025	Amber

Adopted Development Plan Policies Comment 2025	Development of the site has some potential policy constraints, but these could be overcome through the planning application process.
Flood Risk RAG Assessment 2025	Amber
Flood Risk Officer Comment 2025	Flood Zone: Wholly in Flood Zone 1. Surface Water Flooding: 1% lies in a 1 in 100 year event. 1% lies in a 1 in 1000 year event
Flood Risk RAG Assessment 2023	-
Flood Risk Officer Comment 2023	-
Flood Risk RAG Assessment 2021	Amber
Flood Risk Officer Comment 2021	The site is within flood zones 3a or 3b.
Landscape RAG Assessment 2025	-
Landscape Comment 2025	-
Landscape RAG Assessment 2023	-
Landscape Comment 2023	-
Landscape RAG Assessment 2021	Amber
Landscape Comment 2021	The site is a heavily vegetated agricultural field located in back land between South End Road and Spring Lane but with access corridors to both. The site is suitable for development but must include landscape mitigation at an appropriate width to filter views from the surrounding neighbours. Sufficient space should also be reserved within the site for large tree species to be planted to eventually create a layered view of roofs and treetops; this may require adjustment to numbers proposed to be achieved.
Biodiversity and Geodiversity RAG Assessment 2025	-
Biodiversity and Geodiversity Officer Comments 2025	-
Biodiversity and Geodiversity Guideline Comments 2025	-
Biodiversity and Geodiversity RAG Assessment 2023	-
Biodiversity and Geodiversity Officer Comments 2023	-
Biodiversity and Geodiversity Guideline Comments 2023	-
Biodiversity and Geodiversity RAG Assessment 2021	Amber

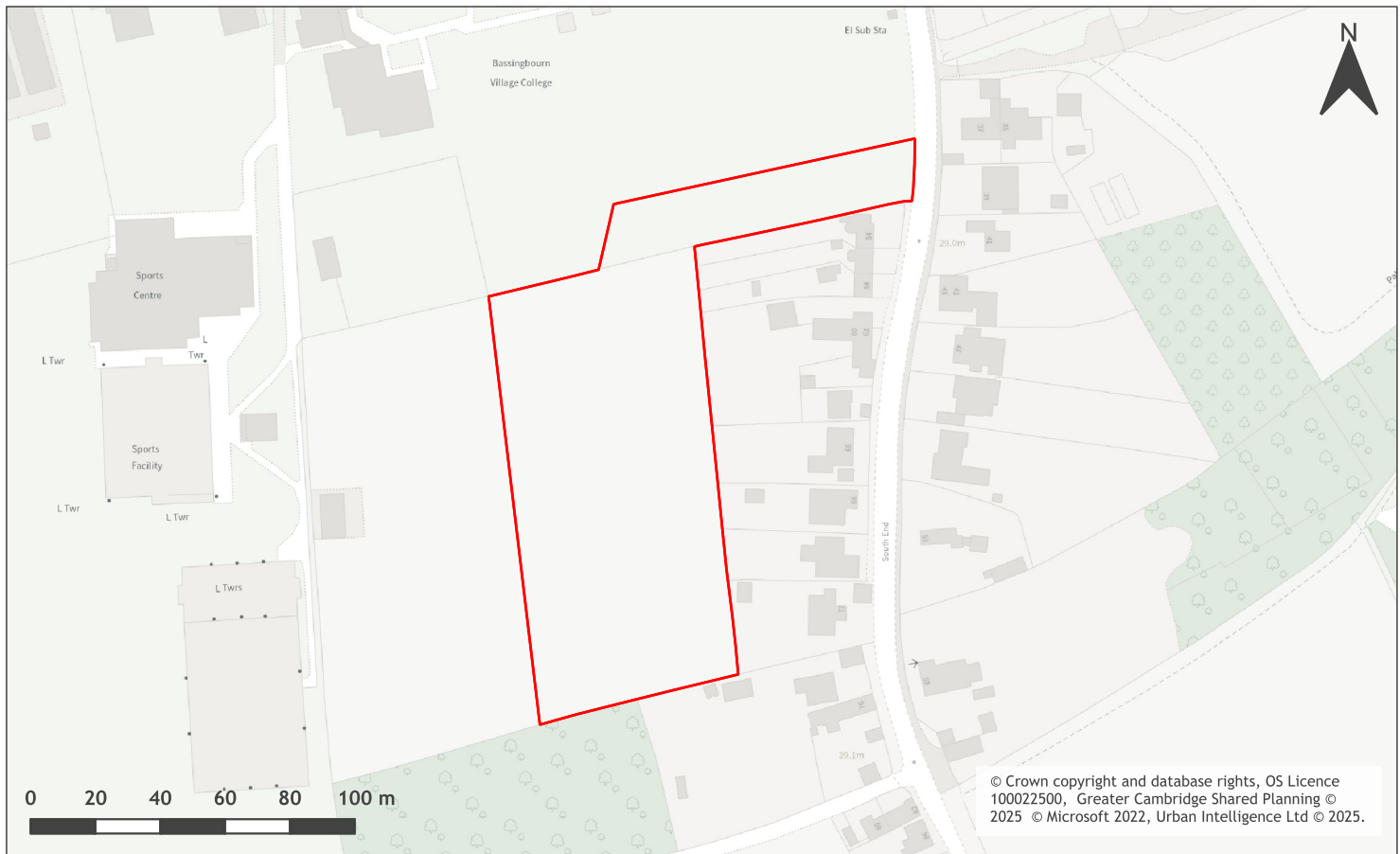
Biodiversity and Geodiversity Officer Comments 2021	Recreational impacts on nearby SSSIs to be considered. Boundary hedgerows, small section of watercourse and adjacent orchard/woodland may qualify as Habitats of Principal Importance/priority habitat and/or be of high ecological value. Arable habitats likely of low ecological value. Boundary habitats may support protected species. Farmland bird populations may be present.
Biodiversity and Geodiversity Guideline Comments 2021	Development of the site may have a detrimental impact on a designated site, or those with a regional or local protection but the impact could be reasonably mitigated or compensated.
Policy RAG Rating 2025	-
Policy Officer Comment 2025	-
Policy RAG Rating 2023	-
Policy Officer Comment 2023	-
Policy RAG Rating 2021	Green
Policy Officer Comments 2021	Site is not on protected open space designation. Any impact of the proposed development could be reasonably mitigated or compensated.
Historic Environment RAG Assessment 2025	-
Historic Environment Comments 2025	-
Historic Environment RAG Assessment 2023	-
Historic Environment Comments 2023	-
Historic Environment RAG Assessment 2021	Amber
Historic Environment Comments 2021	Likely impact to setting of, and views into and out of, Conservation Area, particularly from public footpaths through and adjacent to the site. Potential impact to immediate setting of Dovecote and wider setting of adjacent Listed Buildings, but the impact could be reasonably mitigated.
Archaeology RAG Assessment 2025	-
Archaeology Officer Comment 2025	-
Archaeology RAG Assessment 2023	-
Archaeology Officer Comment 2023	-
Archaeology RAG Assessment 2021	Amber
Archaeology Officer Comment 2021	Previous evaluation has confirmed the presence of significant archaeology of late Saxon and medieval date
Accessibility RAG Assessment 2025 - Automated	Green
Accessibility RAG Assessment 2025 - Officer Verified	-

Accessibility Comment 2025	Good accessibility to key local services, transport, and employment opportunities. Proposed development would not require delivery of accompanying key services
Site Access RAG Assessment 2025	-
Site Access Officer Comment 2025	-
Site Access RAG Assessment 2023	-
Site Access Officer Comment 2023	-
Site Access RAG Assessment 2021	Red
Site Access Officer Comment 2021	The access link to the public highway is unsuitable to serve the number of units that are being proposed.
Transport and Roads RAG Assessment 2025	-
Transport and Roads Guideline Comments 2025	-
Transport and Roads RAG Assessment 2023	-
Transport and Roads Guideline Comments 2023	-
Transport and Roads RAG Assessment 2021	Green
Transport and Roads Guideline Comments 2021	This falls below the threshold for a Transport Assessment
Noise, Vibration, Odour and Light Pollution RAG Assessment 2025	-
Noise, Vibration, Odour and Light Pollution Guideline Comments 2025	-
Noise, Vibration, Odour and Light Pollution RAG Assessment 2023	-
Noise, Vibration, Odour and Light Pollution Guideline Comments 2023	-
Noise, Vibration, Odour and Light Pollution RAG Assessment 2021	Amber
Noise, Vibration, Odour and Light Pollution Guideline Comments 2021	The site is capable of being developed to provide healthy internal and external environments in regard to noise / vibration/ odour/ Light Pollution after careful site layout, design and mitigation.
AQMA RAG Assessment 2025	-
Air Quality Officer Comment 2025	-
AQMA RAG Assessment 2023	-

Air Quality Officer Comment 2023	-
AQMA RAG Assessment 2021	Green
Air Quality Officer Comment 2021	Site does not lie within an AQMA. Minimal traffic impact on AQMA.
Contaminated Land RAG Assessment 2025	-
Contaminated Land Officer Comments 2025	-
Contaminated Land RAG Assessment 2023	-
Contaminated Land Officer Comments 2023	-
Contaminated Land RAG Assessment 2021	Amber
Contaminated Land Officer Comments 2021	Potential for historic contamination, conditions required.
Overall Suitability Score	Red
Further constraints	-
Agricultural Land Classification Grade 1	0
Agricultural Land Classification Grade 2	100
Agricultural Land Classification Grade 3	0
Agricultural Land Classification Grade 4	0
Agricultural Land Classification Non Agricultural	0
Agricultural Land Classification Urban	0
Source Protection Zone	0
Highways England Zones	South West
Available	-
Is the site controlled by a developer or landowner who has expressed an intention to develop?	The site was submitted by the landowner and/or site promoter who has confirmed that the site is available for development in the timescales indicated.
Are there known legal or ownership impediments to development?	No
Is there planning permission to develop the site?	No relevant recent planning history
When will the site be available for development?	0-5 Years
Available RAG	Green

Achievable	-
Is there a reasonable prospect that the site will be developed?	The land has been promoted by the landowner and or developer and is known to be available for development. The site has a low existing use value and residential development is likely to be economically viable at an appropriate density.
Achievable RAG	Green
Capacity	-
Prevailing Density (weighted) (dwellings per ha)	30
Residential capacity at prevailing density	53
Estimated employment space (m2)	0
Estimated start date	0-5 Years
Estimated annual build-out rate (pa)	40-75
Development completion timescales (years)	0-5 Years

Land west of South End, Bassingbourn assessment



A map of Land west of South End, Bassingbourn

Site information	-
Site ID	116047
HELAA Site ID	40164
Suitable Site Area (ha)	1.01985187495001
Ward/Parish	Bassingbourn
Greenfield or Previously Developed?	Greenfield
Category of site	Dispersal: Villages
Category of settlement	Within or adjacent to Minor Rural Centre
Current use(s)	-
Proposed development	Residential
Proposed employment floorspace (m2)	0
Proposed residential capacity	25
Suitability	-
Adopted Development Plan Policies RAG 2025	Amber

Adopted Development Plan Policies Comment 2025	Development of the site has some potential policy constraints, but these could be overcome through the planning application process.
Flood Risk RAG Assessment 2025	Amber
Flood Risk Officer Comment 2025	Flood Zone: Wholly in Flood Zone 1. Surface Water Flooding: 1% lies in a 1 in 1000 year event
Flood Risk RAG Assessment 2023	-
Flood Risk Officer Comment 2023	-
Flood Risk RAG Assessment 2021	Amber
Flood Risk Officer Comment 2021	The site is within flood zone 2 (taking into account climate change) and/or is within an area at high, medium or low risk from surface water flooding.
Landscape RAG Assessment 2025	-
Landscape Comment 2025	-
Landscape RAG Assessment 2023	-
Landscape Comment 2023	-
Landscape RAG Assessment 2021	Amber
Landscape Comment 2021	The site, being enclosed by development and formal open spaces. The village conservation area abuts the site to the north and east and the route for the access is within the conservation area. If development took place landscape mitigation would be required along all boundaries and at an appropriate width to filter views from the surrounding landscape or from neighbours.
Biodiversity and Geodiversity RAG Assessment 2025	-
Biodiversity and Geodiversity Officer Comments 2025	-
Biodiversity and Geodiversity Guideline Comments 2025	-
Biodiversity and Geodiversity RAG Assessment 2023	-
Biodiversity and Geodiversity Officer Comments 2023	-
Biodiversity and Geodiversity Guideline Comments 2023	-
Biodiversity and Geodiversity RAG Assessment 2021	Green

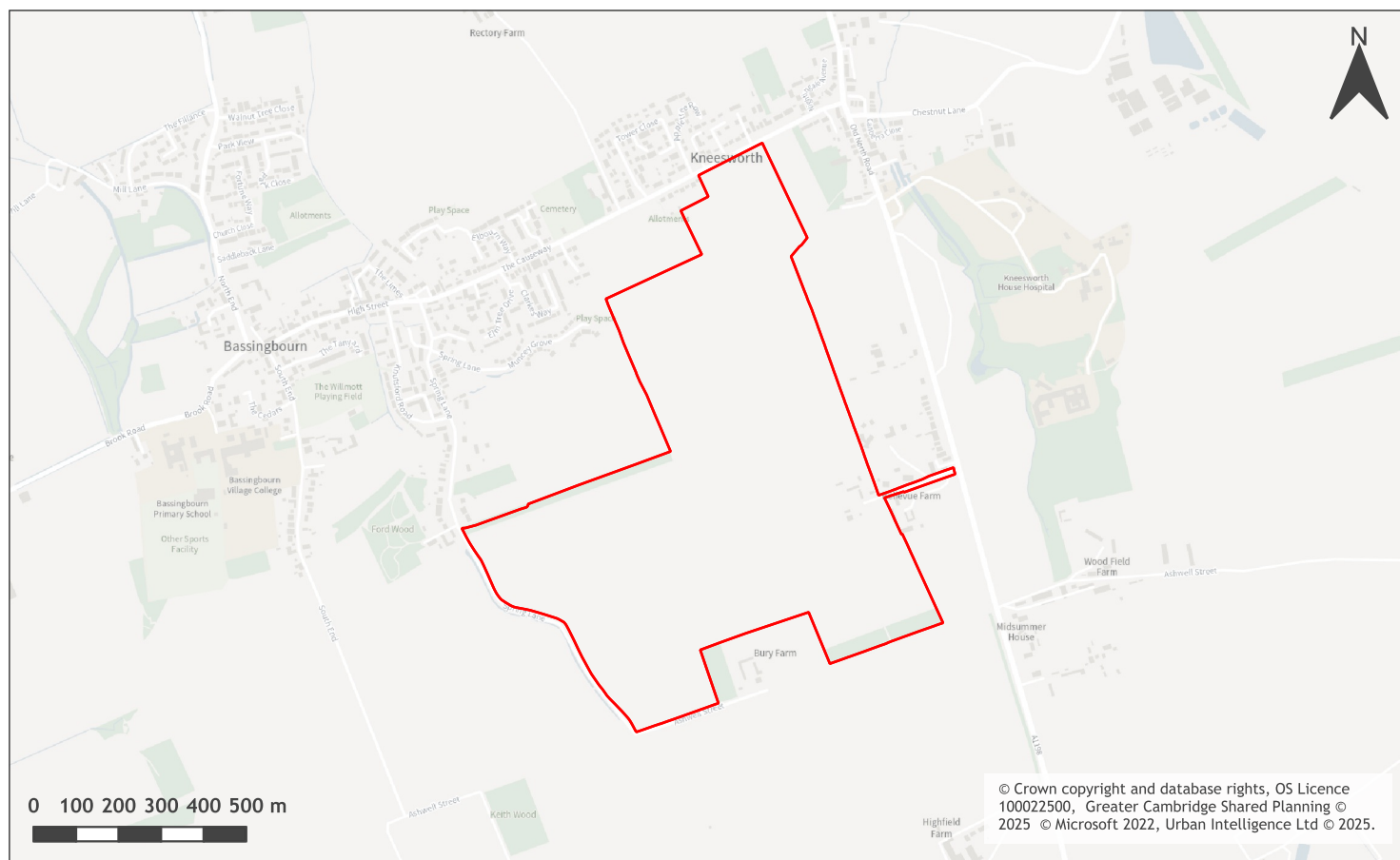
Biodiversity and Geodiversity Officer Comments 2021	Application unlikely to require Natural England Consultation. There are no apparent priority habitats within the site; however, there are grasslands, wooded areas, hedges and wooded boundaries on site that are likely to have ecological value.
Biodiversity and Geodiversity Guideline Comments 2021	Development of the site would not have a detrimental impact on any designated site, or those with a regional or local protection.
Policy RAG Rating 2025	-
Policy Officer Comment 2025	-
Policy RAG Rating 2023	-
Policy Officer Comment 2023	-
Policy RAG Rating 2021	Green
Policy Officer Comments 2021	Site is not on protected open space designation. Any impact of the proposed development could be reasonably mitigated or compensated.
Historic Environment RAG Assessment 2025	-
Historic Environment Comments 2025	-
Historic Environment RAG Assessment 2023	-
Historic Environment Comments 2023	-
Historic Environment RAG Assessment 2021	Amber
Historic Environment Comments 2021	Potential to affect the setting of the Listed Building, and the character and appearance of the Conservation Area. Development of the site could have a detrimental impact on a designated or non-designated heritage asset or the setting of a designated or non-designated heritage asset, but the impact could be reasonably mitigated.
Archaeology RAG Assessment 2025	-
Archaeology Officer Comment 2025	-
Archaeology RAG Assessment 2023	-
Archaeology Officer Comment 2023	-
Archaeology RAG Assessment 2021	Amber
Archaeology Officer Comment 2021	Excavations to west have identified evidence for Saxon and Iron Age settlement
Accessibility RAG Assessment 2025 - Automated	Green
Accessibility RAG Assessment 2025 - Officer Verified	-

Accessibility Comment 2025	Good accessibility to key local services, transport, and employment opportunities. Proposed development would not require delivery of accompanying key services
Site Access RAG Assessment 2025	-
Site Access Officer Comment 2025	-
Site Access RAG Assessment 2023	-
Site Access Officer Comment 2023	-
Site Access RAG Assessment 2021	Amber
Site Access Officer Comment 2021	The proposed site is acceptable in principle subject to detailed design.
Transport and Roads RAG Assessment 2025	-
Transport and Roads Guideline Comments 2025	-
Transport and Roads RAG Assessment 2023	-
Transport and Roads Guideline Comments 2023	-
Transport and Roads RAG Assessment 2021	Amber
Transport and Roads Guideline Comments 2021	Any potential impact on the functioning of trunk roads and/or local roads could be reasonably mitigated.
Noise, Vibration, Odour and Light Pollution RAG Assessment 2025	-
Noise, Vibration, Odour and Light Pollution Guideline Comments 2025	-
Noise, Vibration, Odour and Light Pollution RAG Assessment 2023	-
Noise, Vibration, Odour and Light Pollution Guideline Comments 2023	-
Noise, Vibration, Odour and Light Pollution RAG Assessment 2021	Amber
Noise, Vibration, Odour and Light Pollution Guideline Comments 2021	The site is capable of being developed to provide healthy internal and external environments in regard to noise / vibration/ odour/ Light Pollution after careful site layout, design and mitigation.
AQMA RAG Assessment 2025	-
Air Quality Officer Comment 2025	-
AQMA RAG Assessment 2023	-

Air Quality Officer Comment 2023	-
AQMA RAG Assessment 2021	Green
Air Quality Officer Comment 2021	Site does not lie within an AQMA. Minimal traffic impact on AQMA.
Contaminated Land RAG Assessment 2025	-
Contaminated Land Officer Comments 2025	-
Contaminated Land RAG Assessment 2023	-
Contaminated Land Officer Comments 2023	-
Contaminated Land RAG Assessment 2021	Amber
Contaminated Land Officer Comments 2021	Potential for historic contamination, conditions required.
Overall Suitability Score	Amber
Further constraints	-
Agricultural Land Classification Grade 1	0
Agricultural Land Classification Grade 2	100
Agricultural Land Classification Grade 3	0
Agricultural Land Classification Grade 4	0
Agricultural Land Classification Non Agricultural	0
Agricultural Land Classification Urban	0
Source Protection Zone	0
Highways England Zones	South West
Available	-
Is the site controlled by a developer or landowner who has expressed an intention to develop?	The site was submitted by the landowner and/or site promoter who has confirmed that the site is available for development in the timescales indicated.
Are there known legal or ownership impediments to development?	No
Is there planning permission to develop the site?	No relevant recent planning history
When will the site be available for development?	0-5 Years
Available RAG	Green

Achievable	-
Is there a reasonable prospect that the site will be developed?	The land has been promoted by the landowner and or developer and is known to be available for development. The site has a low existing use value and residential development is likely to be economically viable at an appropriate density.
Achievable RAG	Green
Capacity	-
Prevailing Density (weighted) (dwellings per ha)	30
Residential capacity at prevailing density	28
Estimated employment space (m2)	0
Estimated start date	0-5 Years
Estimated annual build-out rate (pa)	40-75
Development completion timescales (years)	0-5 Years

Land at Beauval Farm, Old North Road, Bassingbourn assessment



A map of Land at Beauval Farm, Old North Road, Bassingbourn

Site information	-
Site ID	116048
HELAA Site ID	40202
Suitable Site Area (ha)	69.3127113969145
Ward/Parish	Bassingbourn
Greenfield or Previously Developed?	Greenfield and Previously Developed Land
Category of site	Dispersal: Villages
Category of settlement	Within or adjacent to Minor Rural Centre
Current use(s)	-
Proposed development	Mixed Use
Proposed employment floorspace (m2)	27000
Proposed residential capacity	2080
Suitability	-
Adopted Development Plan Policies RAG 2025	Amber

Adopted Development Plan Policies Comment 2025	Development of the site has some potential policy constraints, but these could be overcome through the planning application process.
Flood Risk RAG Assessment 2025	Green
Flood Risk Officer Comment 2025	Flood Zone: Wholly in Flood Zone 1. Surface Water Flooding: None
Flood Risk RAG Assessment 2023	-
Flood Risk Officer Comment 2023	-
Flood Risk RAG Assessment 2021	Green
Flood Risk Officer Comment 2021	The site is at low risk of flooding (within flood zone 1) and no risk from surface water flooding
Landscape RAG Assessment 2025	-
Landscape Comment 2025	-
Landscape RAG Assessment 2023	-
Landscape Comment 2023	-
Landscape RAG Assessment 2021	Red
Landscape Comment 2021	The site is nearly 70 hectares of farmland between Bassingbourn and Kneesworth; long range views are currently possible with indivisibility between villages. Development of the scale proposed would unalterably change the character of Bassingbourn and Kneesworth and effectively merge the two villages. Views towards the south are expansive and extend to the hills surrounding and beyond Royston from The Causeway and should be retained.
Biodiversity and Geodiversity RAG Assessment 2025	-
Biodiversity and Geodiversity Officer Comments 2025	-
Biodiversity and Geodiversity Guideline Comments 2025	-
Biodiversity and Geodiversity RAG Assessment 2023	-
Biodiversity and Geodiversity Officer Comments 2023	-
Biodiversity and Geodiversity Guideline Comments 2023	-
Biodiversity and Geodiversity RAG Assessment 2021	Amber

Biodiversity and Geodiversity Officer Comments 2021	Residential development above 25 dwellings or development with potential to cause air pollution would require consultation with Natural England. Recreational impacts on nearby SSSIs needs to be considered. Likely requirement for alternative green space provision. Boundary hedgerows and watercourse may qualify as Habitats of Principal Importance/priority habitat and/or be of high ecological value. Majority of site (arable) likely of low ecological value. Buildings and trees may support roosting bats (if suitable). Watercourse may have potential to support protected species e.g. water vole. Farmland bird populations likely to be present.
Biodiversity and Geodiversity Guideline Comments 2021	Development of the site may have a detrimental impact on a designated site, or those with a regional or local protection but the impact could be reasonably mitigated or compensated.
Policy RAG Rating 2025	-
Policy Officer Comment 2025	-
Policy RAG Rating 2023	-
Policy Officer Comment 2023	-
Policy RAG Rating 2021	Green
Policy Officer Comments 2021	Site is not on protected open space designation. Any impact of the proposed development could be reasonably mitigated or compensated.
Historic Environment RAG Assessment 2025	-
Historic Environment Comments 2025	-
Historic Environment RAG Assessment 2023	-
Historic Environment Comments 2023	-
Historic Environment RAG Assessment 2021	Amber
Historic Environment Comments 2021	Potential impact to wider setting of heritage assets and approach and setting of Bassingbourn Conservation Area. Careful consideration required regarding impact to northern site boundary, adjacent to The Causeway. Development of the site could have a detrimental impact on a designated or non-designated heritage asset or the setting of a designated or non-designated heritage asset, but the impact could be reasonably mitigated.
Archaeology RAG Assessment 2025	-
Archaeology Officer Comment 2025	-
Archaeology RAG Assessment 2023	-
Archaeology Officer Comment 2023	-
Archaeology RAG Assessment 2021	Amber
Archaeology Officer Comment 2021	Located in an extensive prehistoric landscape with a known Bronze Age Barrow in the area

Accessibility RAG Assessment 2025 - Automated	Amber
Accessibility RAG Assessment 2025 - Officer Verified	-
Accessibility Comment 2025	Adequate accessibility to key local services, transport, and employment opportunities.
Site Access RAG Assessment 2025	-
Site Access Officer Comment 2025	-
Site Access RAG Assessment 2023	-
Site Access Officer Comment 2023	-
Site Access RAG Assessment 2021	Amber
Site Access Officer Comment 2021	The proposed site is acceptable in principle subject to detailed design.
Transport and Roads RAG Assessment 2025	-
Transport and Roads Guideline Comments 2025	-
Transport and Roads RAG Assessment 2023	-
Transport and Roads Guideline Comments 2023	-
Transport and Roads RAG Assessment 2021	Amber
Transport and Roads Guideline Comments 2021	Any potential impact on the functioning of trunk roads and/or local roads could be reasonably mitigated.
Noise, Vibration, Odour and Light Pollution RAG Assessment 2025	-
Noise, Vibration, Odour and Light Pollution Guideline Comments 2025	-
Noise, Vibration, Odour and Light Pollution RAG Assessment 2023	-
Noise, Vibration, Odour and Light Pollution Guideline Comments 2023	-
Noise, Vibration, Odour and Light Pollution RAG Assessment 2021	Amber
Noise, Vibration, Odour and Light Pollution Guideline Comments 2021	The site is capable of being developed to provide healthy internal and external environments in regard to noise / vibration/ odour/ Light Pollution after careful site layout, design and mitigation.

AQMA RAG Assessment 2025	-
Air Quality Officer Comment 2025	-
AQMA RAG Assessment 2023	-
Air Quality Officer Comment 2023	-
AQMA RAG Assessment 2021	Amber
Air Quality Officer Comment 2021	Large site and lots of residential units - potential for AQMA traffic impact without mitigation
Contaminated Land RAG Assessment 2025	-
Contaminated Land Officer Comments 2025	-
Contaminated Land RAG Assessment 2023	-
Contaminated Land Officer Comments 2023	-
Contaminated Land RAG Assessment 2021	Amber
Contaminated Land Officer Comments 2021	Potential for historic contamination, conditions required.
Overall Suitability Score	Red
Further constraints	-
Agricultural Land Classification Grade 1	0
Agricultural Land Classification Grade 2	100
Agricultural Land Classification Grade 3	0
Agricultural Land Classification Grade 4	0
Agricultural Land Classification Non Agricultural	0
Agricultural Land Classification Urban	0
Source Protection Zone	6.38
Highways England Zones	South West
Available	-
Is the site controlled by a developer or landowner who has expressed an intention to develop?	The site was submitted by the landowner and/or site promoter who has confirmed that the site is available for development in the timescales indicated.
Are there known legal or ownership impediments to development?	No

Is there planning permission to develop the site?	No relevant recent planning history
When will the site be available for development?	0-5 Years
Available RAG	Green
Achievable	-
Is there a reasonable prospect that the site will be developed?	The land has been promoted by the landowner and or developer and is known to be available for development. The site has a low existing use value and mixed-use development is likely to be economically viable at an appropriate density.
Achievable RAG	Green
Capacity	-
Prevailing Density (weighted) (dwellings per ha)	30
Residential capacity at prevailing density	1040
Estimated employment space (m2)	27000
Estimated start date	0-5 Years
Estimated annual build-out rate (pa)	225-230
Development completion timescales (years)	11-15 Years