

Legend

Study Area

- Cambridge City Boundary
- South Cambridgeshire Boundary

Groundwater Flooding Potential

- Limited potential for groundwater flooding to occur
- Potential for groundwater flooding of property situated below ground level
- Potential for groundwater flooding to occur at surface

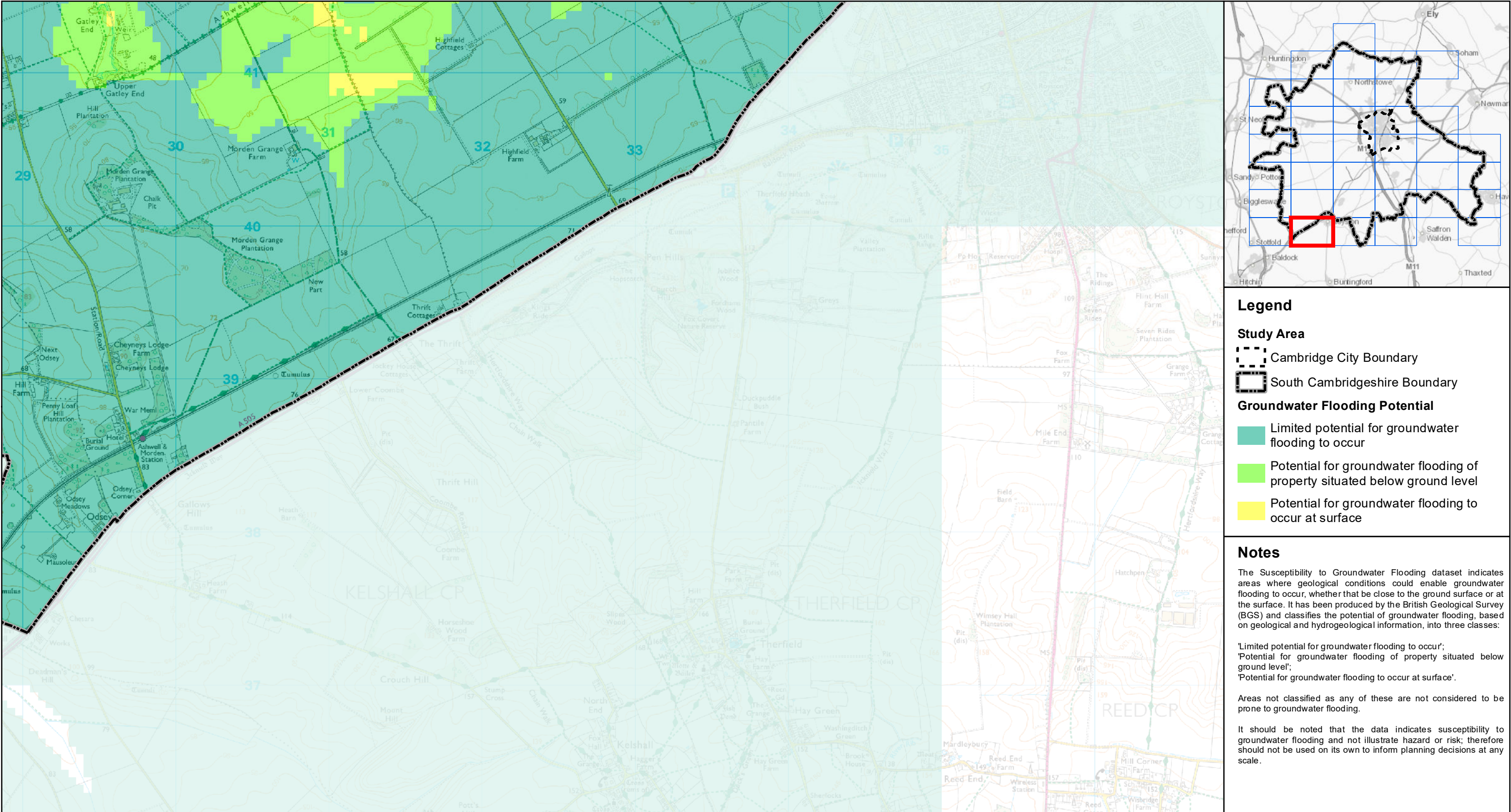
Notes

The Susceptibility to Groundwater Flooding dataset indicates areas where geological conditions could enable groundwater flooding to occur, whether that be close to the ground surface or at the surface. It has been produced by the British Geological Survey (BGS) and classifies the potential of groundwater flooding, based on geological and hydrogeological information, into three classes:

'Limited potential for groundwater flooding to occur';
'Potential for groundwater flooding of property situated below ground level';
'Potential for groundwater flooding to occur at surface'.

Areas not classified as any of these are not considered to be prone to groundwater flooding.

It should be noted that the data indicates susceptibility to groundwater flooding and not illustrate hazard or risk; therefore should not be used on its own to inform planning decisions at any scale.



Legend

Study Area

- Cambridge City Boundary
- South Cambridgeshire Boundary

Groundwater Flooding Potential

- Limited potential for groundwater flooding to occur
- Potential for groundwater flooding of property situated below ground level
- Potential for groundwater flooding to occur at surface

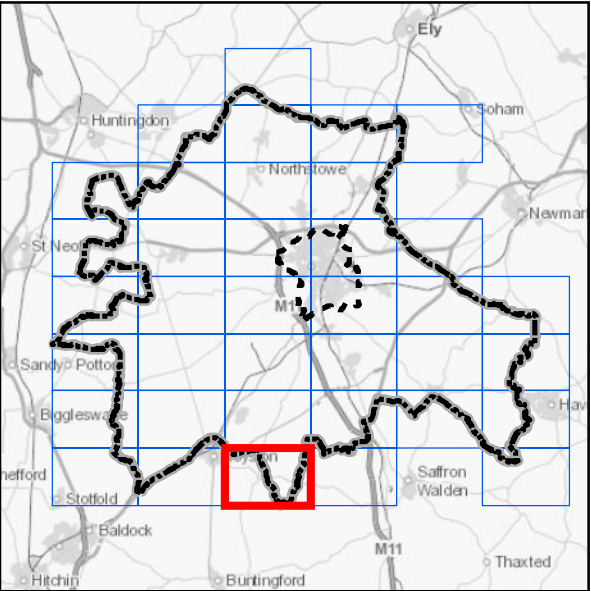
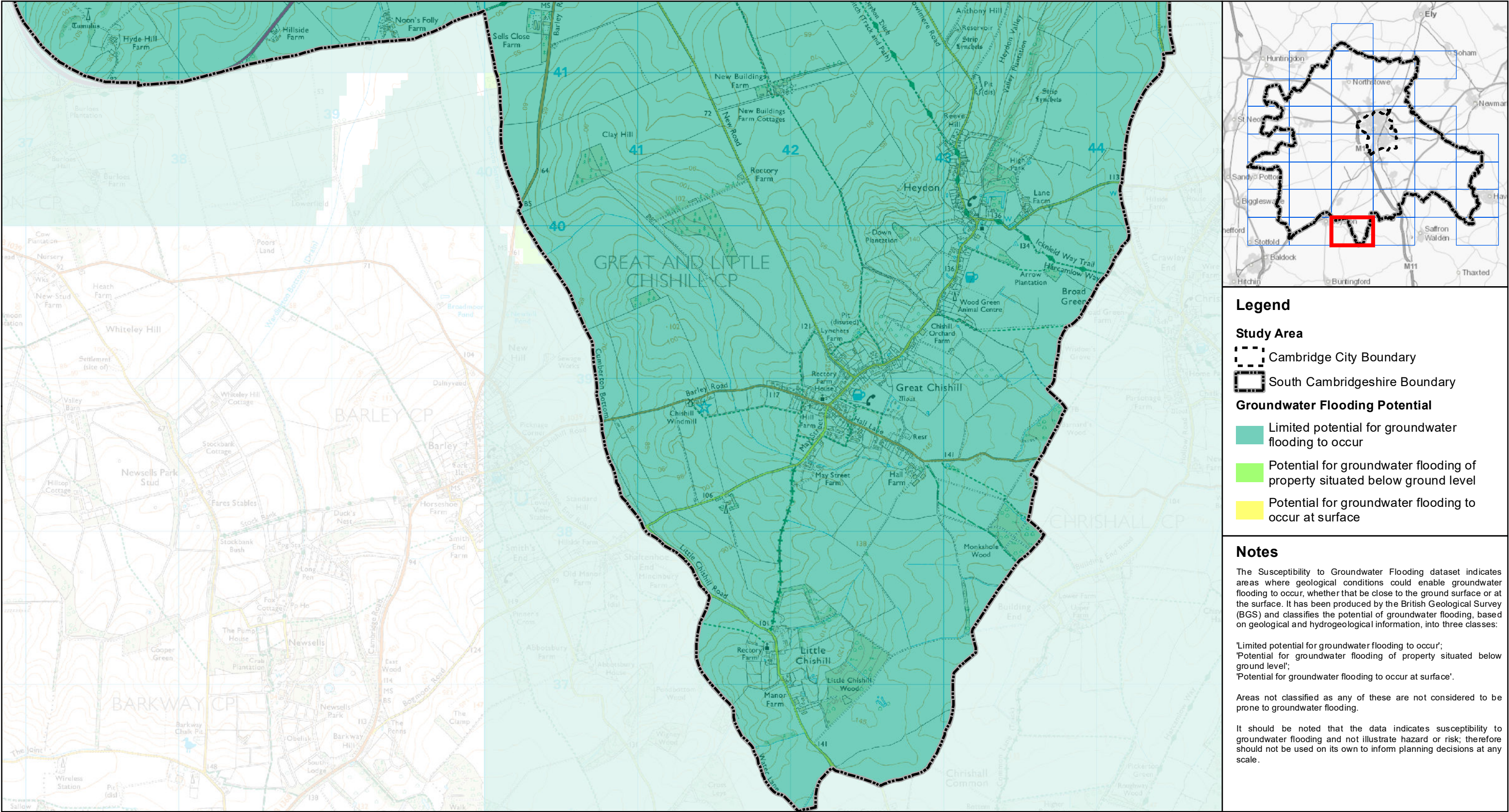
Notes

The Susceptibility to Groundwater Flooding dataset indicates areas where geological conditions could enable groundwater flooding to occur, whether that be close to the ground surface or at the surface. It has been produced by the British Geological Survey (BGS) and classifies the potential of groundwater flooding, based on geological and hydrogeological information, into three classes:

- 'Limited potential for groundwater flooding to occur';
- 'Potential for groundwater flooding of property situated below ground level';
- 'Potential for groundwater flooding to occur at surface'.

Areas not classified as any of these are not considered to be prone to groundwater flooding.

It should be noted that the data indicates susceptibility to groundwater flooding and not illustrate hazard or risk; therefore should not be used on its own to inform planning decisions at any scale.



Legend

Study Area
[Dashed line] Cambridge City Boundary
[Thick dashed line] South Cambridgeshire Boundary

Groundwater Flooding Potential
[Light green box] Limited potential for groundwater flooding to occur
[Medium green box] Potential for groundwater flooding of property situated below ground level
[Yellow box] Potential for groundwater flooding to occur at surface

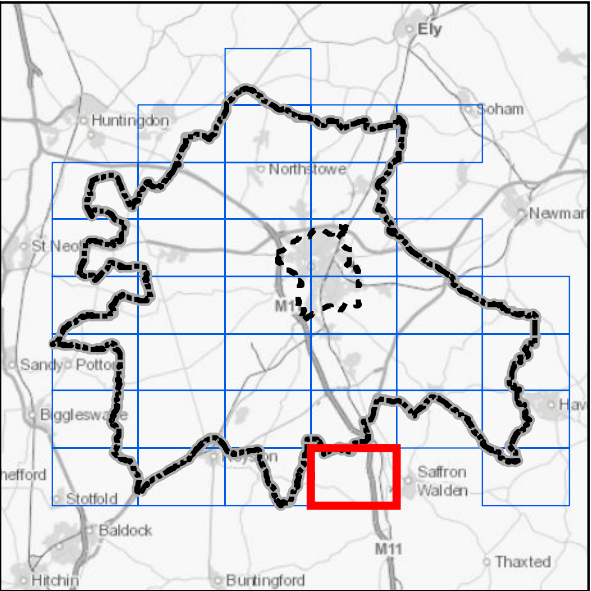
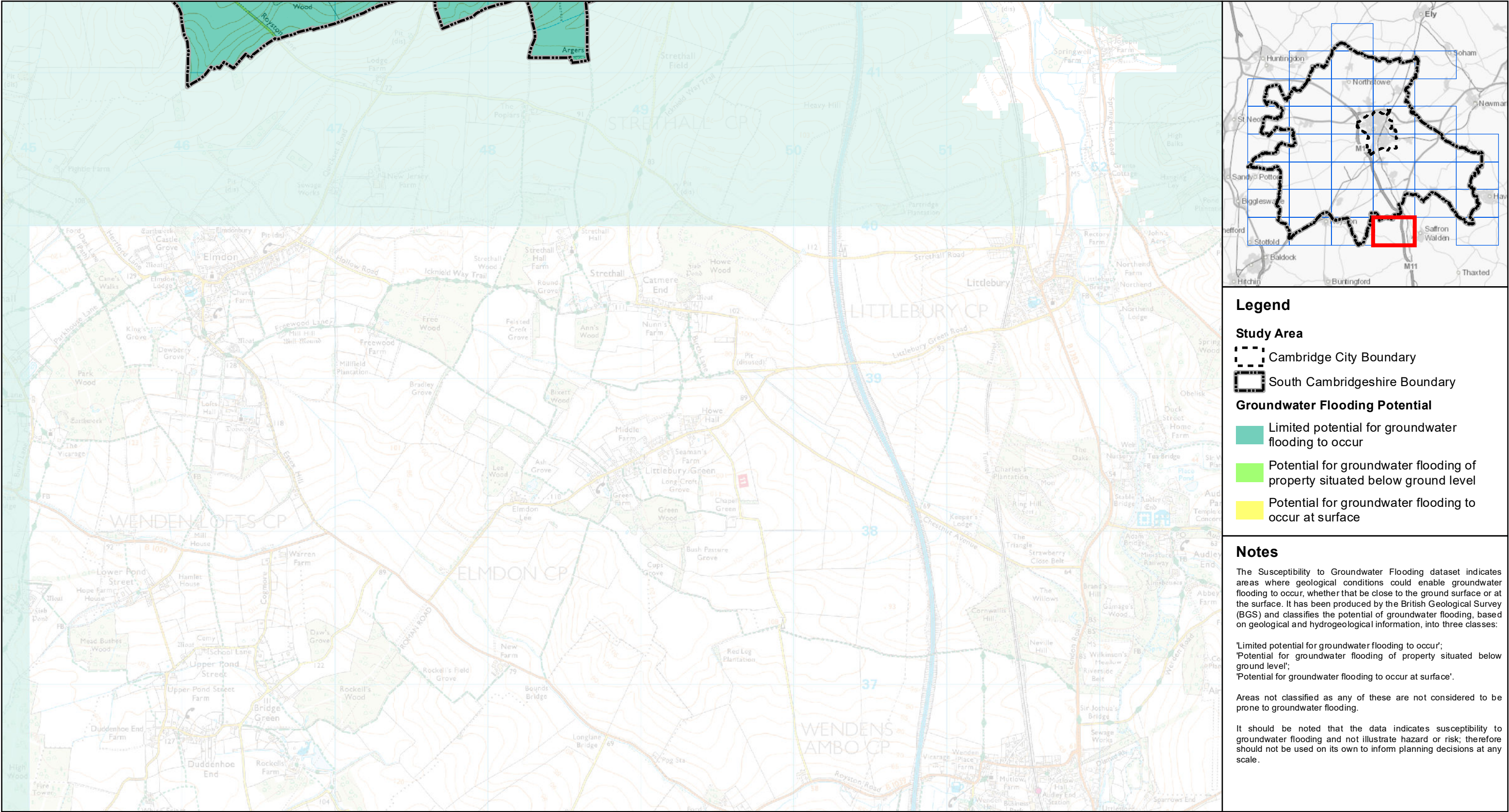
Notes

The Susceptibility to Groundwater Flooding dataset indicates areas where geological conditions could enable groundwater flooding to occur, whether that be close to the ground surface or at the surface. It has been produced by the British Geological Survey (BGS) and classifies the potential of groundwater flooding, based on geological and hydrogeological information, into three classes:

'Limited potential for groundwater flooding to occur';
'Potential for groundwater flooding of property situated below ground level';
'Potential for groundwater flooding to occur at surface'.

Areas not classified as any of these are not considered to be prone to groundwater flooding.

It should be noted that the data indicates susceptibility to groundwater flooding and not illustrate hazard or risk; therefore should not be used on its own to inform planning decisions at any scale.



Legend

Study Area

- Cambridge City Boundary
- South Cambridgeshire Boundary

Groundwater Flooding Potential

- Limited potential for groundwater flooding to occur
- Potential for groundwater flooding of property situated below ground level
- Potential for groundwater flooding to occur at surface

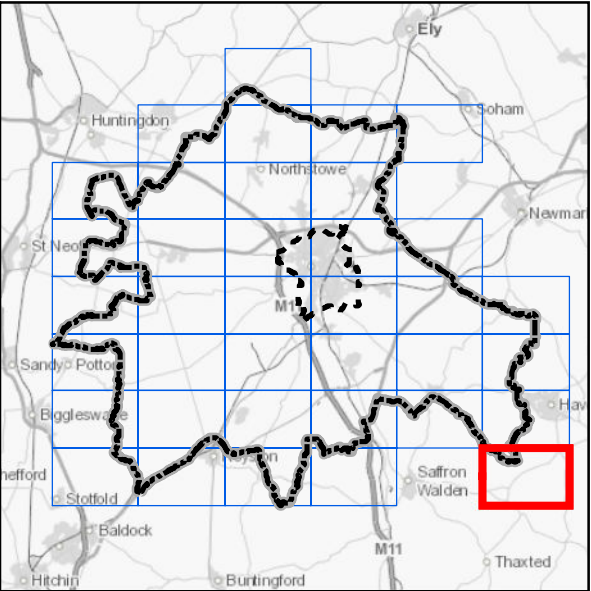
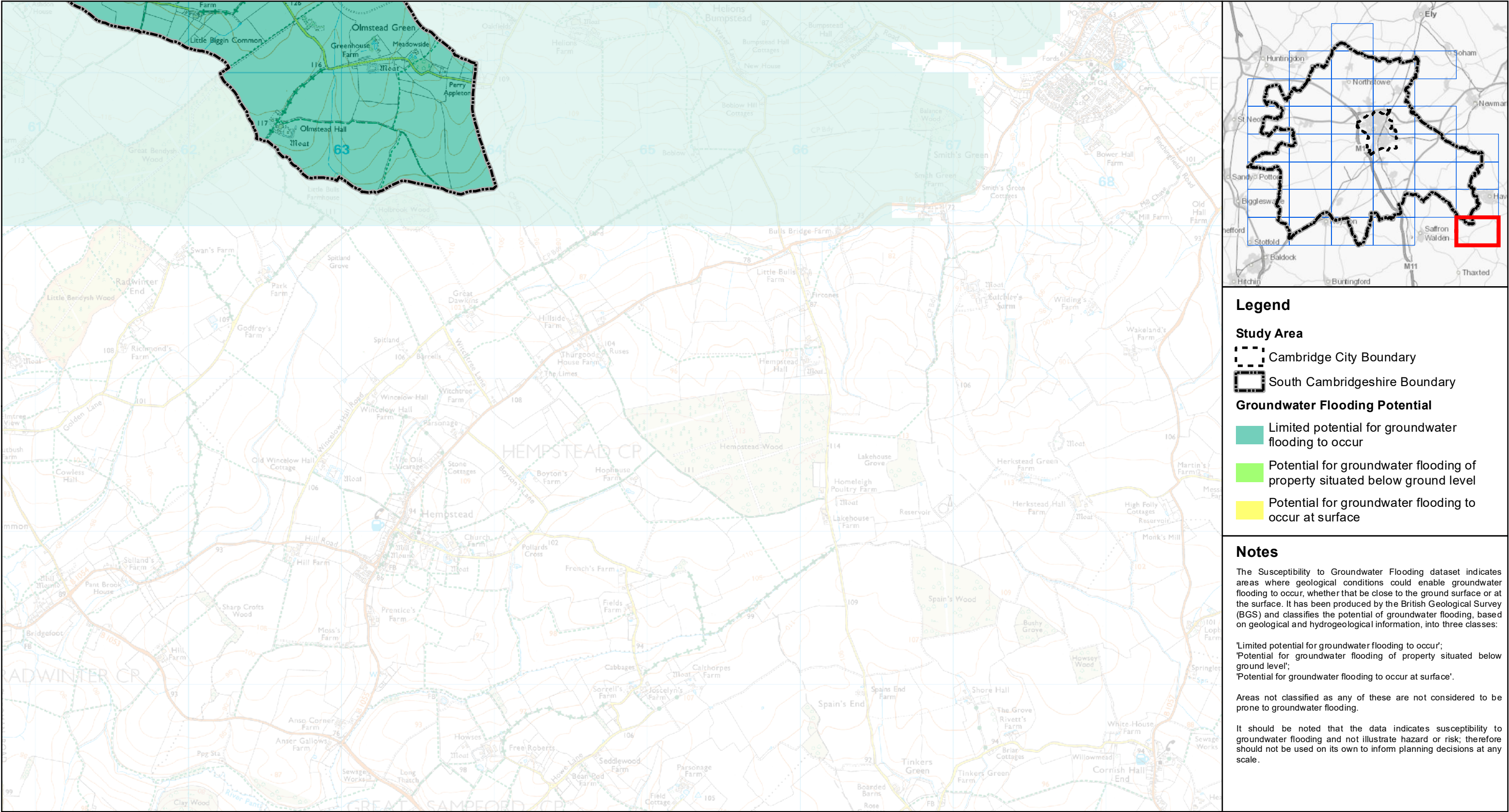
Notes

The Susceptibility to Groundwater Flooding dataset indicates areas where geological conditions could enable groundwater flooding to occur, whether that be close to the ground surface or at the surface. It has been produced by the British Geological Survey (BGS) and classifies the potential of groundwater flooding, based on geological and hydrogeological information, into three classes:

'Limited potential for groundwater flooding to occur';
'Potential for groundwater flooding of property situated below ground level';
'Potential for groundwater flooding to occur at surface'.

Areas not classified as any of these are not considered to be prone to groundwater flooding.

It should be noted that the data indicates susceptibility to groundwater flooding and not illustrate hazard or risk; therefore should not be used on its own to inform planning decisions at any scale.



Legend

Study Area

- Cambridge City Boundary
- South Cambridgeshire Boundary

Groundwater Flooding Potential

- Limited potential for groundwater flooding to occur
- Potential for groundwater flooding of property situated below ground level
- Potential for groundwater flooding to occur at surface

Notes

The Susceptibility to Groundwater Flooding dataset indicates areas where geological conditions could enable groundwater flooding to occur, whether that be close to the ground surface or at the surface. It has been produced by the British Geological Survey (BGS) and classifies the potential of groundwater flooding, based on geological and hydrogeological information, into three classes:

'Limited potential for groundwater flooding to occur';
'Potential for groundwater flooding of property situated below ground level';
'Potential for groundwater flooding to occur at surface'.

Areas not classified as any of these are not considered to be prone to groundwater flooding.

It should be noted that the data indicates susceptibility to groundwater flooding and not illustrate hazard or risk; therefore should not be used on its own to inform planning decisions at any scale.