



Client



Greater Cambridge Integrated Water Management Study

Susceptibility to Groundwater Flooding

012

Contains OS data © Crown Copyright and database right 2020
Contains British Geological Survey materials © UKRI 2020. All rights reserved.

Sheet Number:

1 of 37

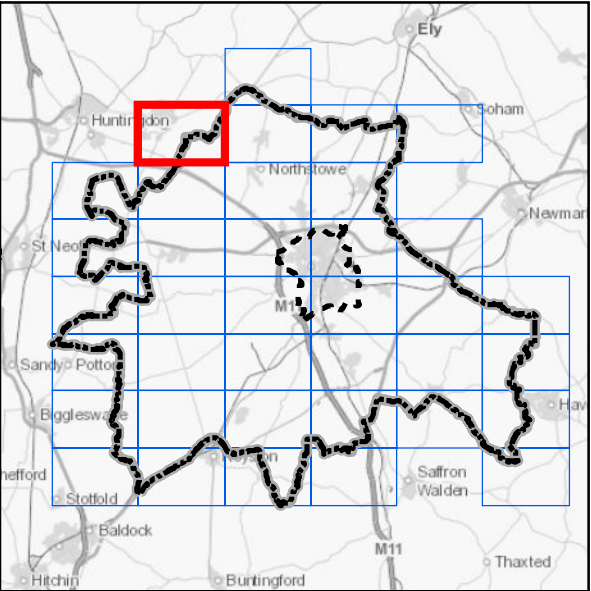
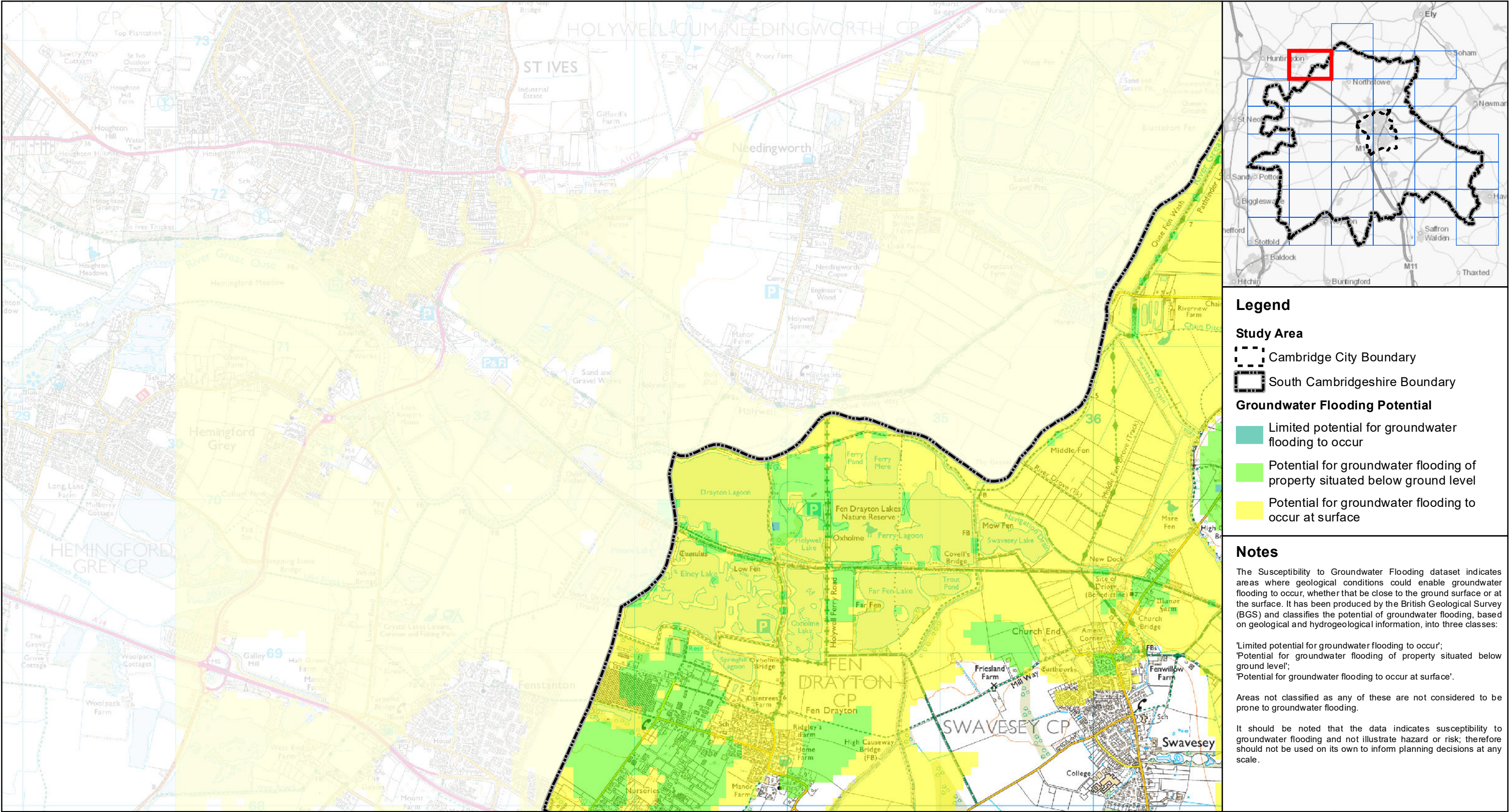
1:23,960 @ A3

Figure: 48444/4005/GIS024

Date: 17/09/2020

Checked: CW

Rev A



Legend

Study Area

- Cambridge City Boundary
- South Cambridgeshire Boundary

Groundwater Flooding Potential

- Limited potential for groundwater flooding to occur
- Potential for groundwater flooding of property situated below ground level
- Potential for groundwater flooding to occur at surface

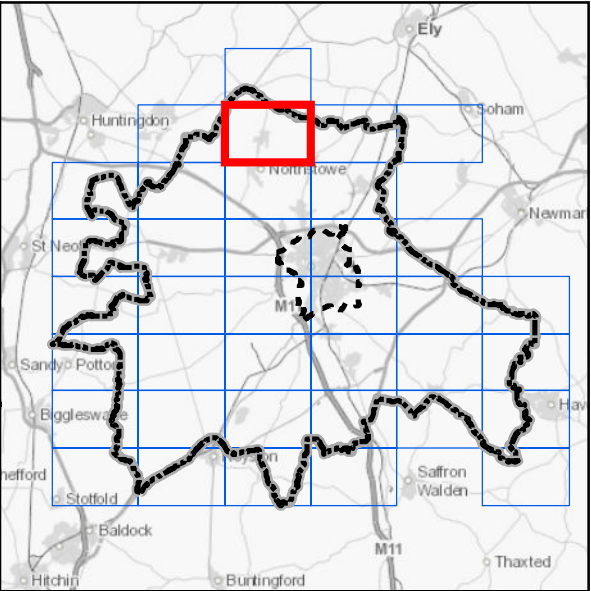
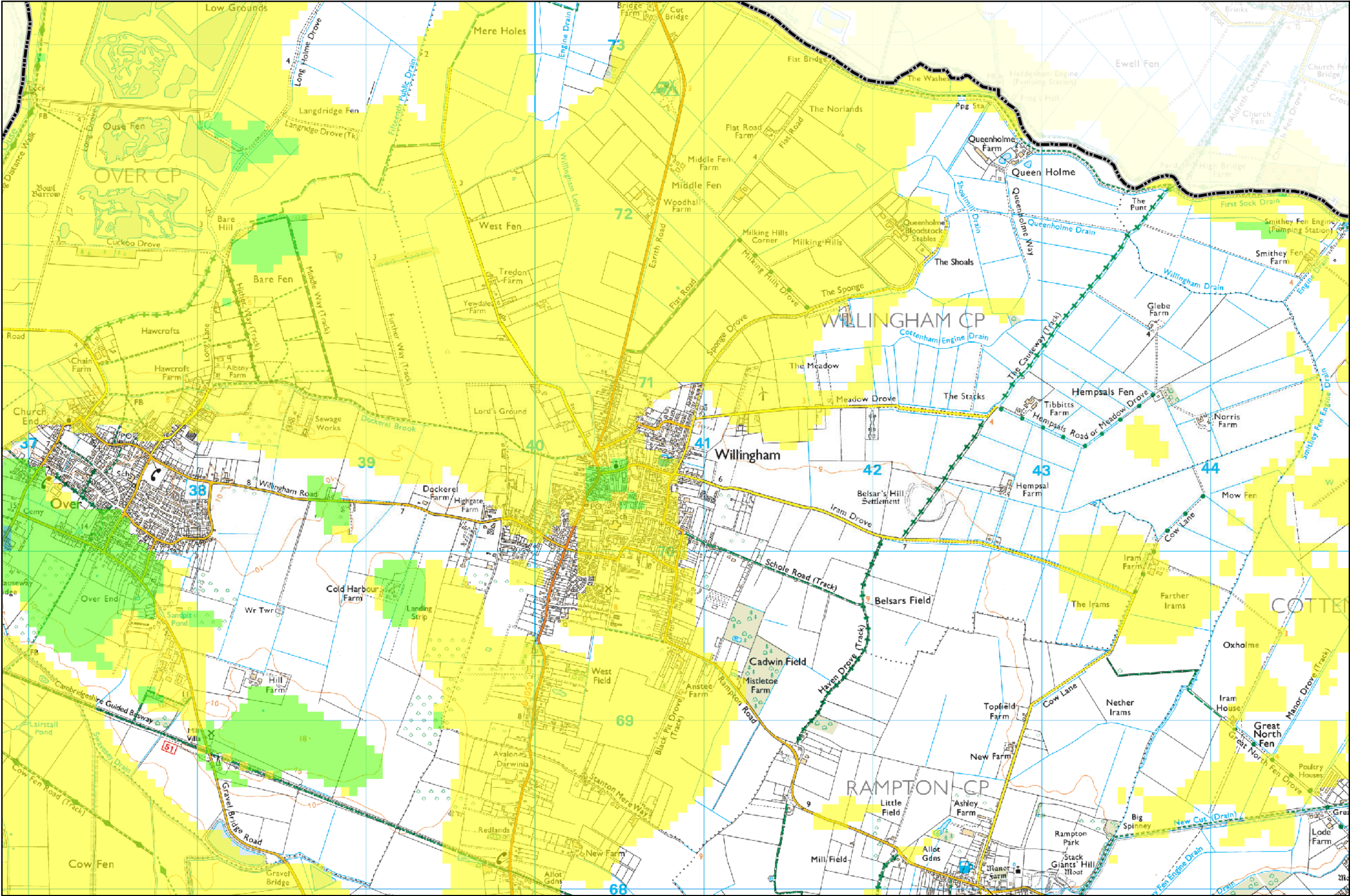
Notes

The Susceptibility to Groundwater Flooding dataset indicates areas where geological conditions could enable groundwater flooding to occur, whether that be close to the ground surface or at the surface. It has been produced by the British Geological Survey (BGS) and classifies the potential of groundwater flooding, based on geological and hydrogeological information, into three classes:

- 'Limited potential for groundwater flooding to occur';
- 'Potential for groundwater flooding of property situated below ground level';
- 'Potential for groundwater flooding to occur at surface'.

Areas not classified as any of these are not considered to be prone to groundwater flooding.

It should be noted that the data indicates susceptibility to groundwater flooding and not illustrate hazard or risk; therefore should not be used on its own to inform planning decisions at any scale.



Legend

Study Area

- Cambridge City Boundary
- South Cambridgeshire Boundary

Groundwater Flooding Potential

- Limited potential for groundwater flooding to occur
- Potential for groundwater flooding of property situated below ground level
- Potential for groundwater flooding to occur at surface

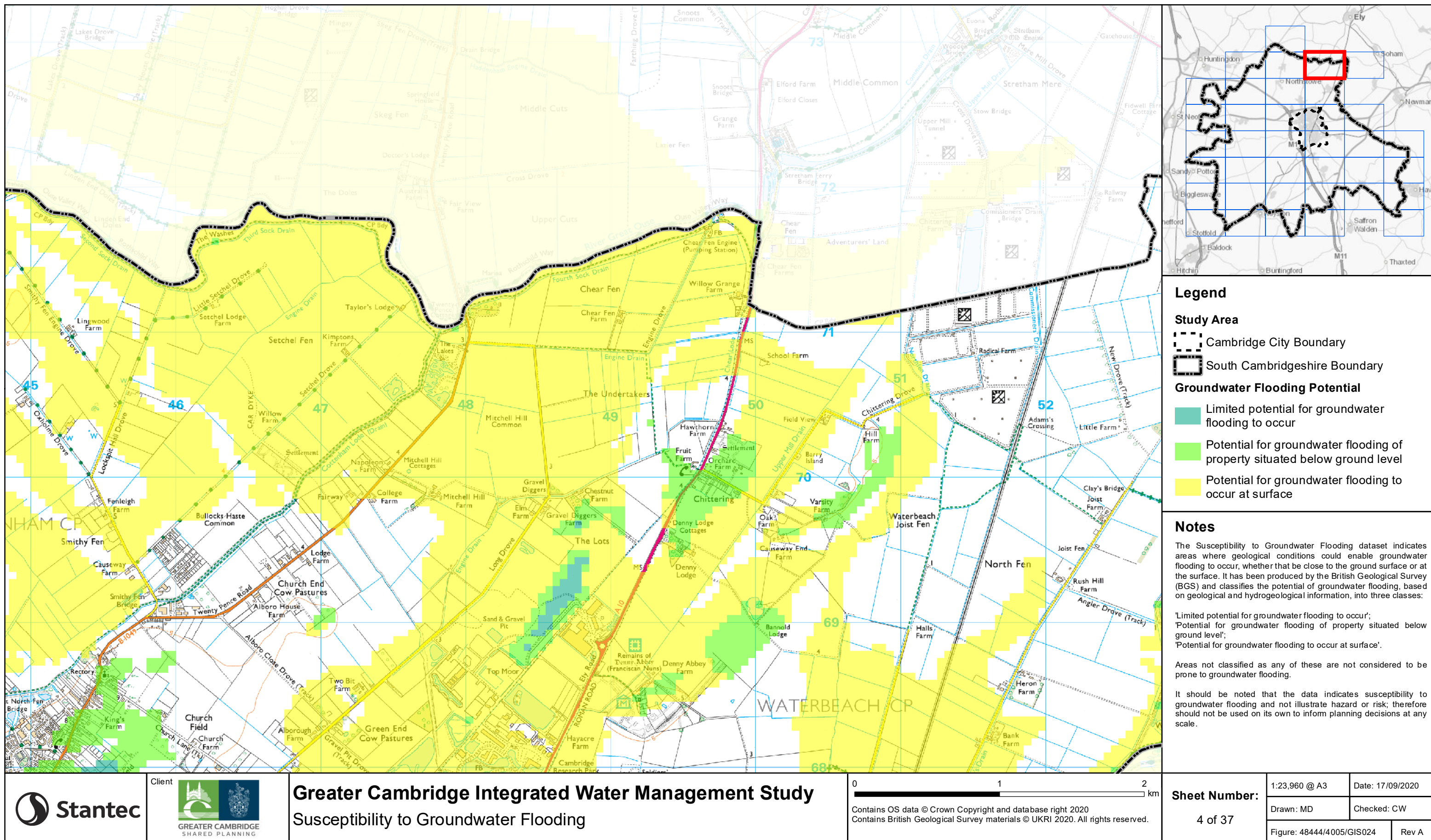
Notes

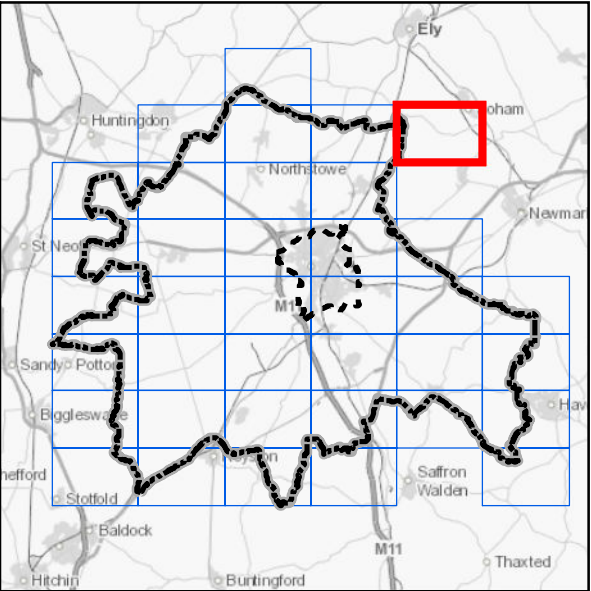
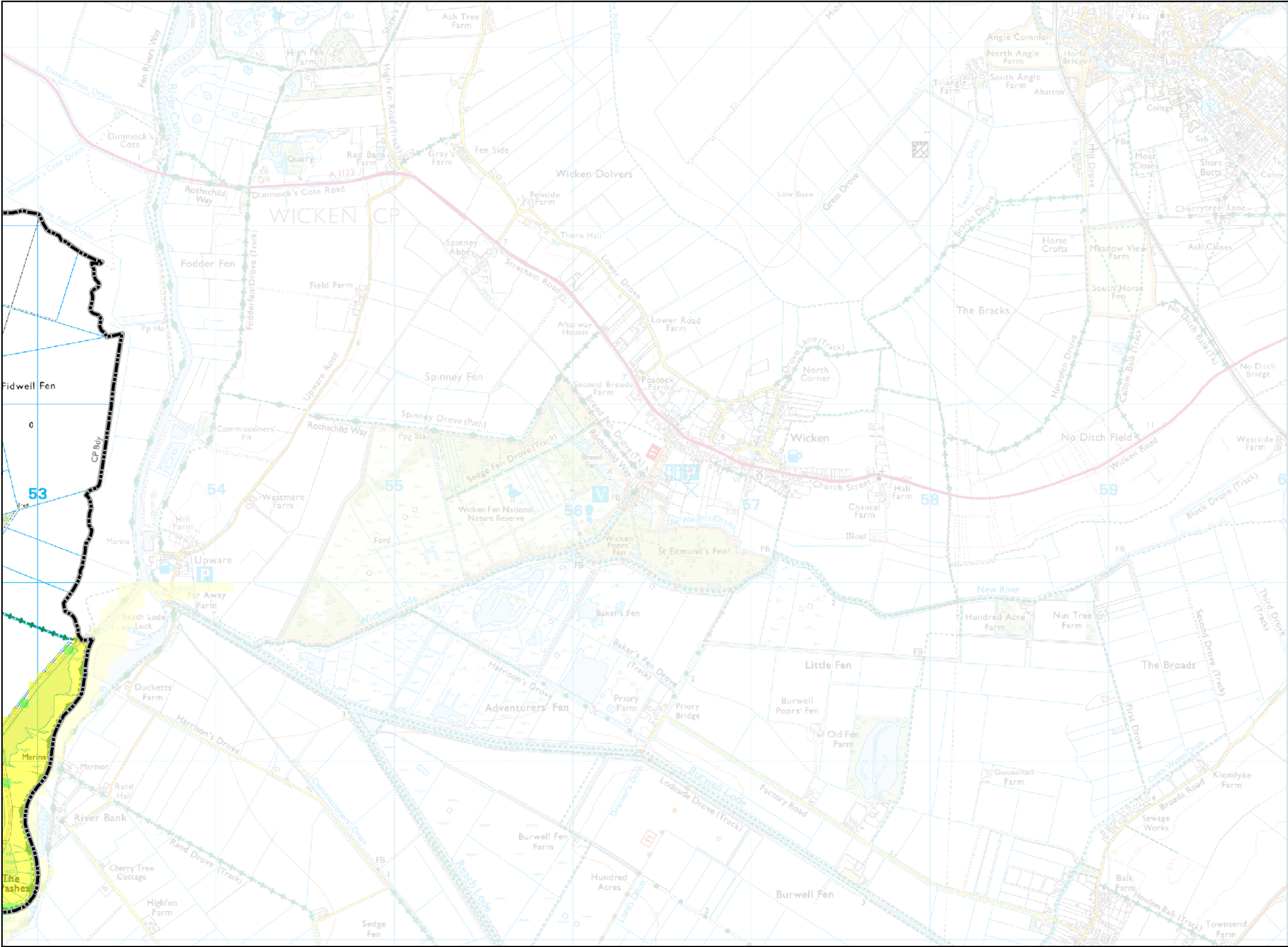
The Susceptibility to Groundwater Flooding dataset indicates areas where geological conditions could enable groundwater flooding to occur, whether that be close to the ground surface or at the surface. It has been produced by the British Geological Survey (BGS) and classifies the potential of groundwater flooding, based on geological and hydrogeological information, into three classes:

'Limited potential for groundwater flooding to occur';
'Potential for groundwater flooding of property situated below ground level';
'Potential for groundwater flooding to occur at surface'.

Areas not classified as any of these are not considered to be prone to groundwater flooding.

It should be noted that the data indicates susceptibility to groundwater flooding and not illustrate hazard or risk; therefore should not be used on its own to inform planning decisions at any scale.





- Legend**
- Study Area**
- Cambridge City Boundary
 - South Cambridgeshire Boundary
- Groundwater Flooding Potential**
- Limited potential for groundwater flooding to occur
 - Potential for groundwater flooding of property situated below ground level
 - Potential for groundwater flooding to occur at surface

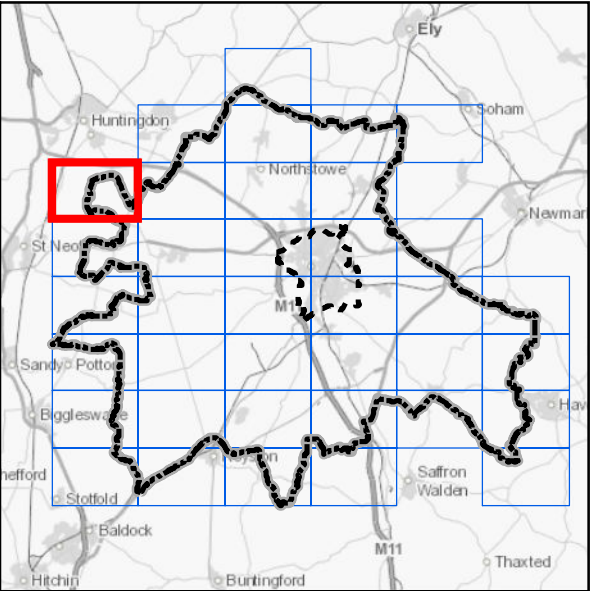
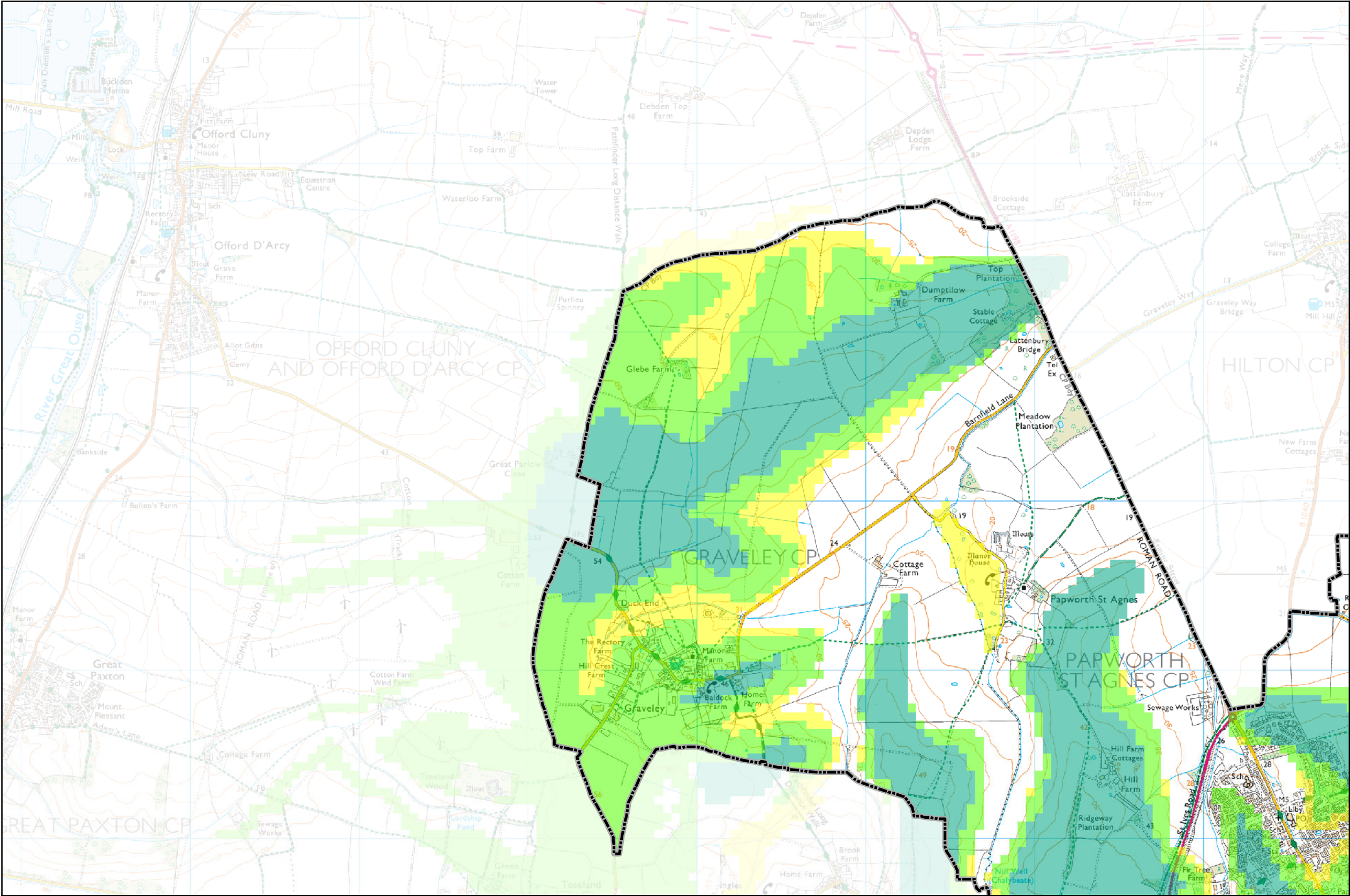
Notes

The Susceptibility to Groundwater Flooding dataset indicates areas where geological conditions could enable groundwater flooding to occur, whether that be close to the ground surface or at the surface. It has been produced by the British Geological Survey (BGS) and classifies the potential of groundwater flooding, based on geological and hydrogeological information, into three classes:

'Limited potential for groundwater flooding to occur';
'Potential for groundwater flooding of property situated below ground level';
'Potential for groundwater flooding to occur at surface'.

Areas not classified as any of these are not considered to be prone to groundwater flooding.

It should be noted that the data indicates susceptibility to groundwater flooding and not illustrate hazard or risk; therefore should not be used on its own to inform planning decisions at any scale.



Legend

Study Area

- Cambridge City Boundary
- South Cambridgeshire Boundary

Groundwater Flooding Potential

- Limited potential for groundwater flooding to occur
- Potential for groundwater flooding of property situated below ground level
- Potential for groundwater flooding to occur at surface

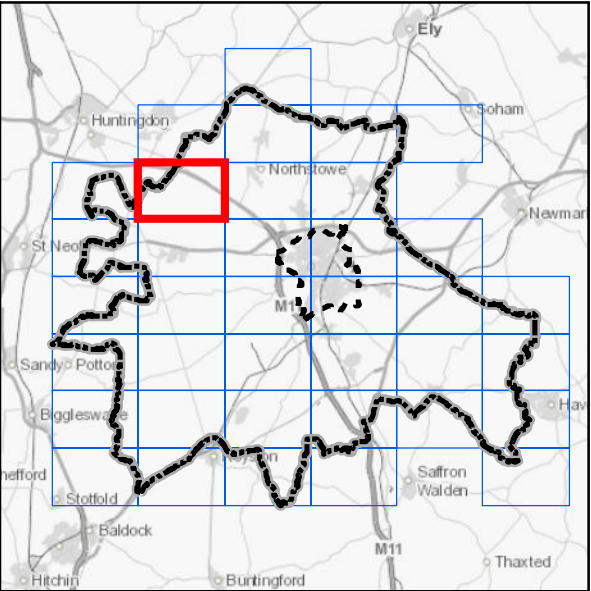
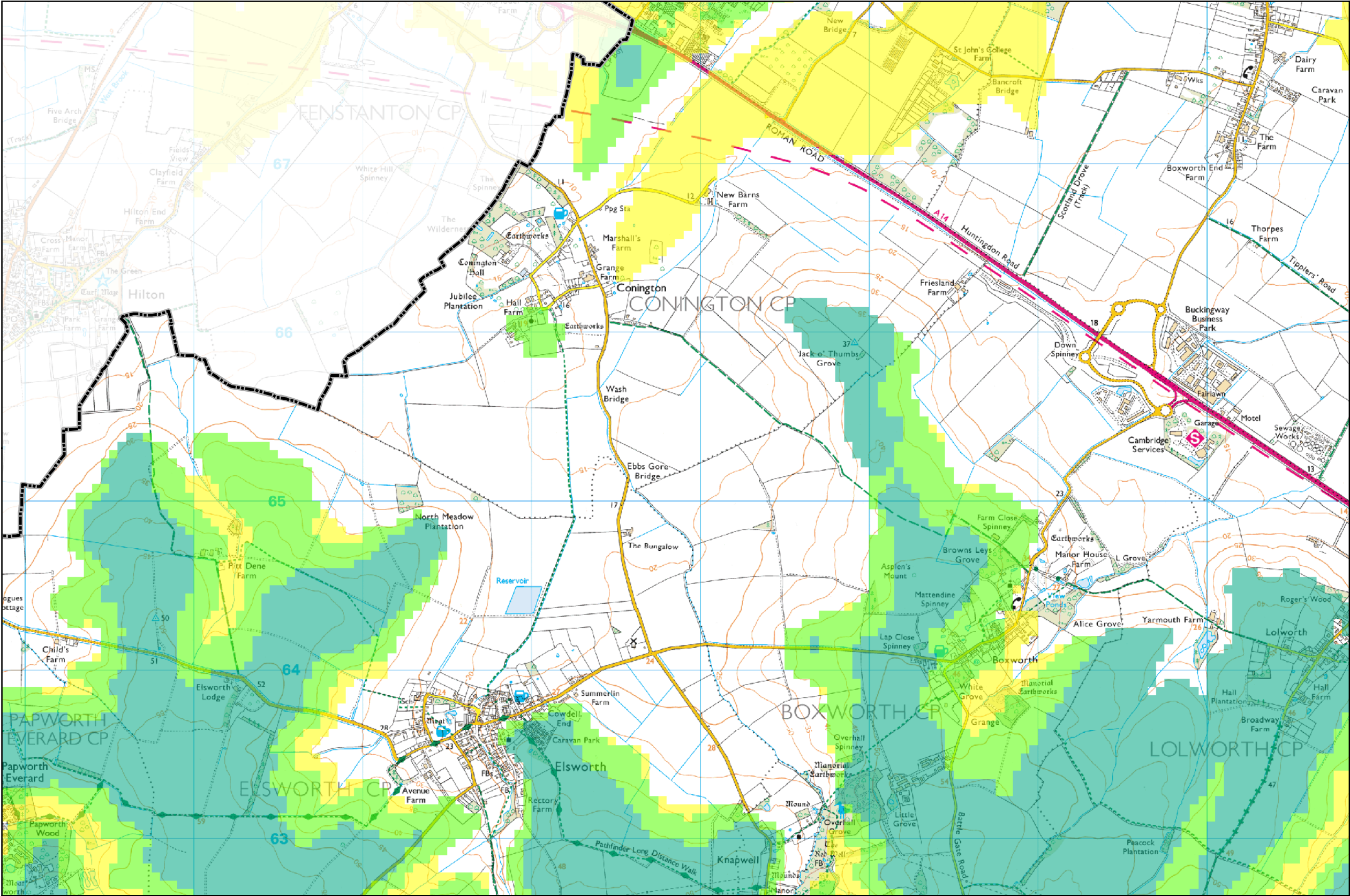
Notes

The Susceptibility to Groundwater Flooding dataset indicates areas where geological conditions could enable groundwater flooding to occur, whether that be close to the ground surface or at the surface. It has been produced by the British Geological Survey (BGS) and classifies the potential of groundwater flooding, based on geological and hydrogeological information, into three classes:

- 'Limited potential for groundwater flooding to occur';
- 'Potential for groundwater flooding of property situated below ground level';
- 'Potential for groundwater flooding to occur at surface'.

Areas not classified as any of these are not considered to be prone to groundwater flooding.

It should be noted that the data indicates susceptibility to groundwater flooding and not illustrate hazard or risk; therefore should not be used on its own to inform planning decisions at any scale.



Legend

Study Area

- Cambridge City Boundary
- South Cambridgeshire Boundary

Groundwater Flooding Potential

- Limited potential for groundwater flooding to occur
- Potential for groundwater flooding of property situated below ground level
- Potential for groundwater flooding to occur at surface

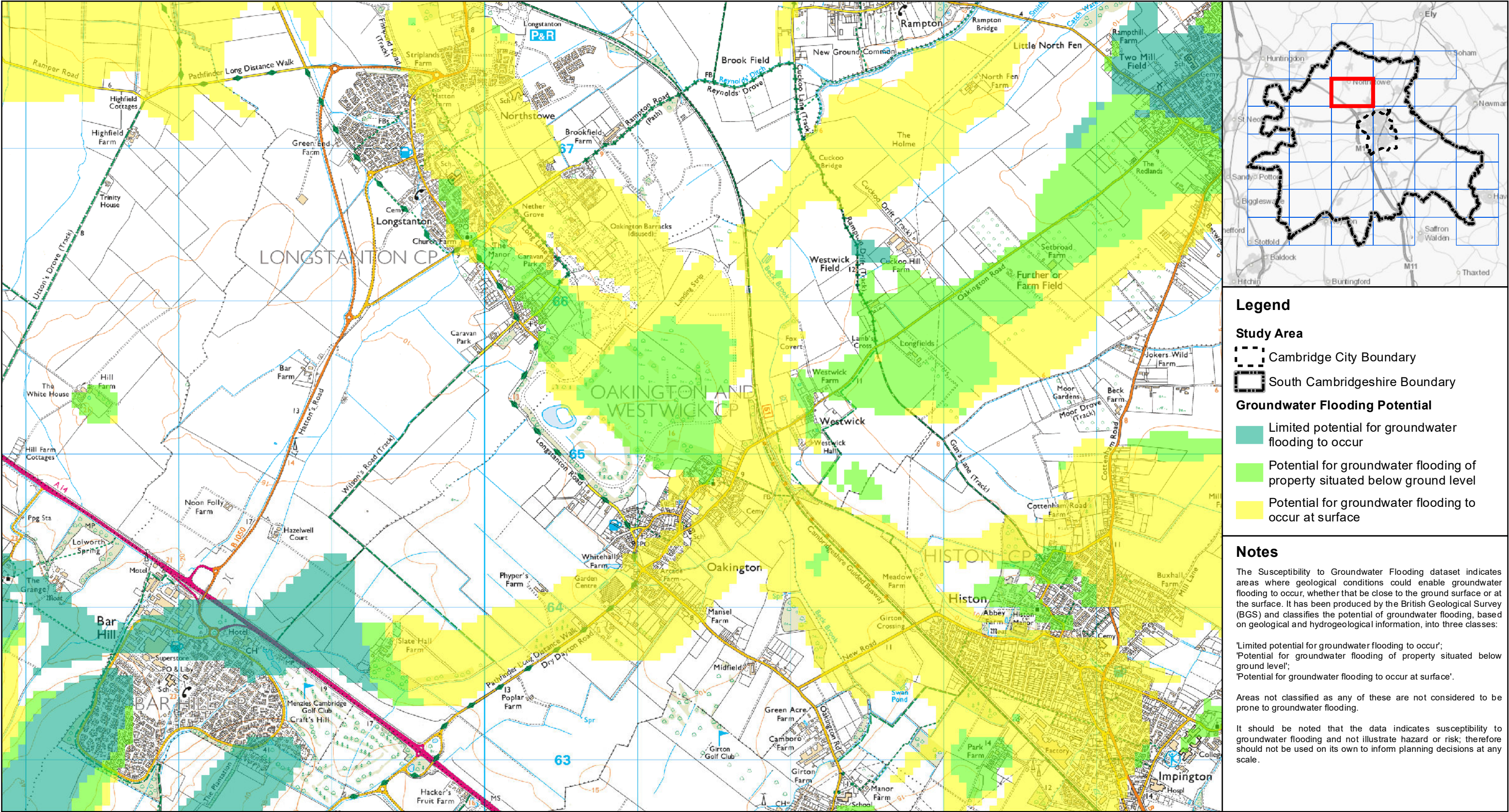
Notes

The Susceptibility to Groundwater Flooding dataset indicates areas where geological conditions could enable groundwater flooding to occur, whether that be close to the ground surface or at the surface. It has been produced by the British Geological Survey (BGS) and classifies the potential of groundwater flooding, based on geological and hydrogeological information, into three classes:

'Limited potential for groundwater flooding to occur';
'Potential for groundwater flooding of property situated below ground level';
'Potential for groundwater flooding to occur at surface'.

Areas not classified as any of these are not considered to be prone to groundwater flooding.

It should be noted that the data indicates susceptibility to groundwater flooding and not illustrate hazard or risk; therefore should not be used on its own to inform planning decisions at any scale.



Legend

Study Area

- Cambridge City Boundary
- South Cambridgeshire Boundary

Groundwater Flooding Potential

- Limited potential for groundwater flooding to occur
- Potential for groundwater flooding of property situated below ground level
- Potential for groundwater flooding to occur at surface

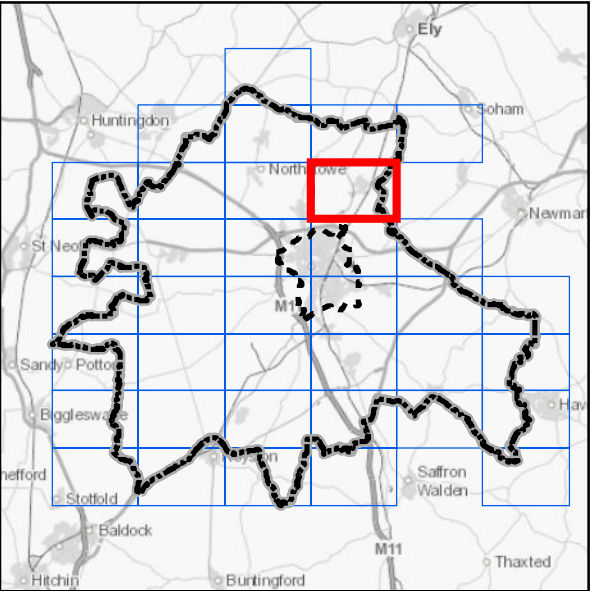
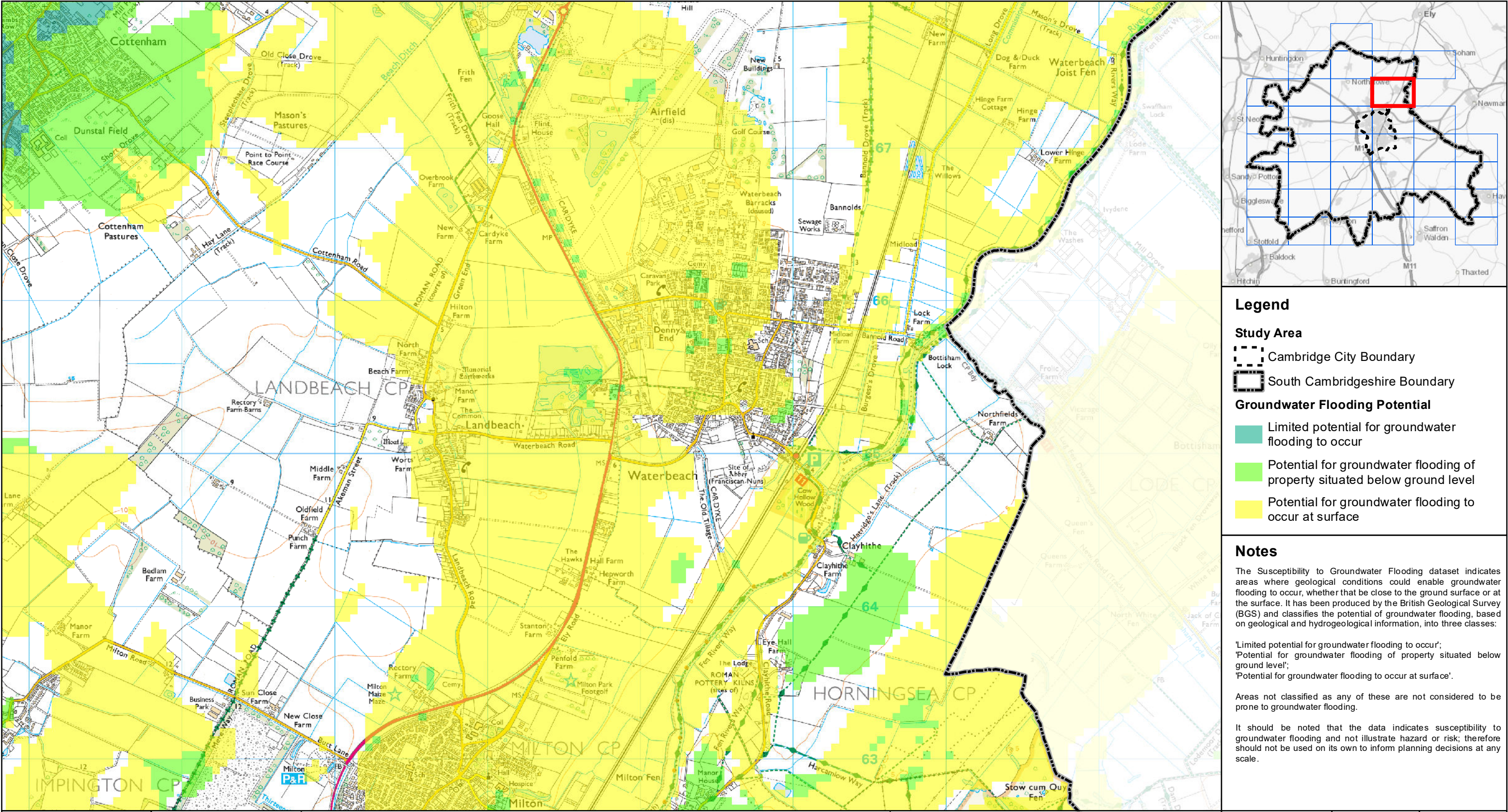
Notes

The Susceptibility to Groundwater Flooding dataset indicates areas where geological conditions could enable groundwater flooding to occur, whether that be close to the ground surface or at the surface. It has been produced by the British Geological Survey (BGS) and classifies the potential of groundwater flooding, based on geological and hydrogeological information, into three classes:

'Limited potential for groundwater flooding to occur';
'Potential for groundwater flooding of property situated below ground level';
'Potential for groundwater flooding to occur at surface'.

Areas not classified as any of these are not considered to be prone to groundwater flooding.

It should be noted that the data indicates susceptibility to groundwater flooding and not illustrate hazard or risk; therefore should not be used on its own to inform planning decisions at any scale.



- Legend**
- Study Area**
- Cambridge City Boundary
 - South Cambridgeshire Boundary
- Groundwater Flooding Potential**
- Limited potential for groundwater flooding to occur
 - Potential for groundwater flooding of property situated below ground level
 - Potential for groundwater flooding to occur at surface

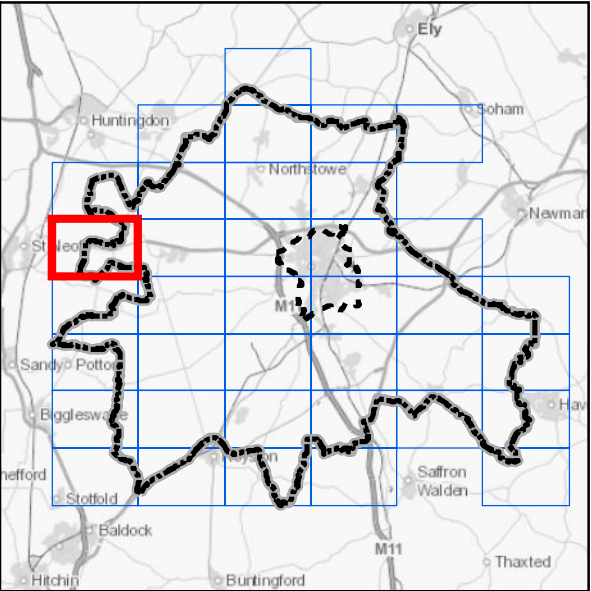
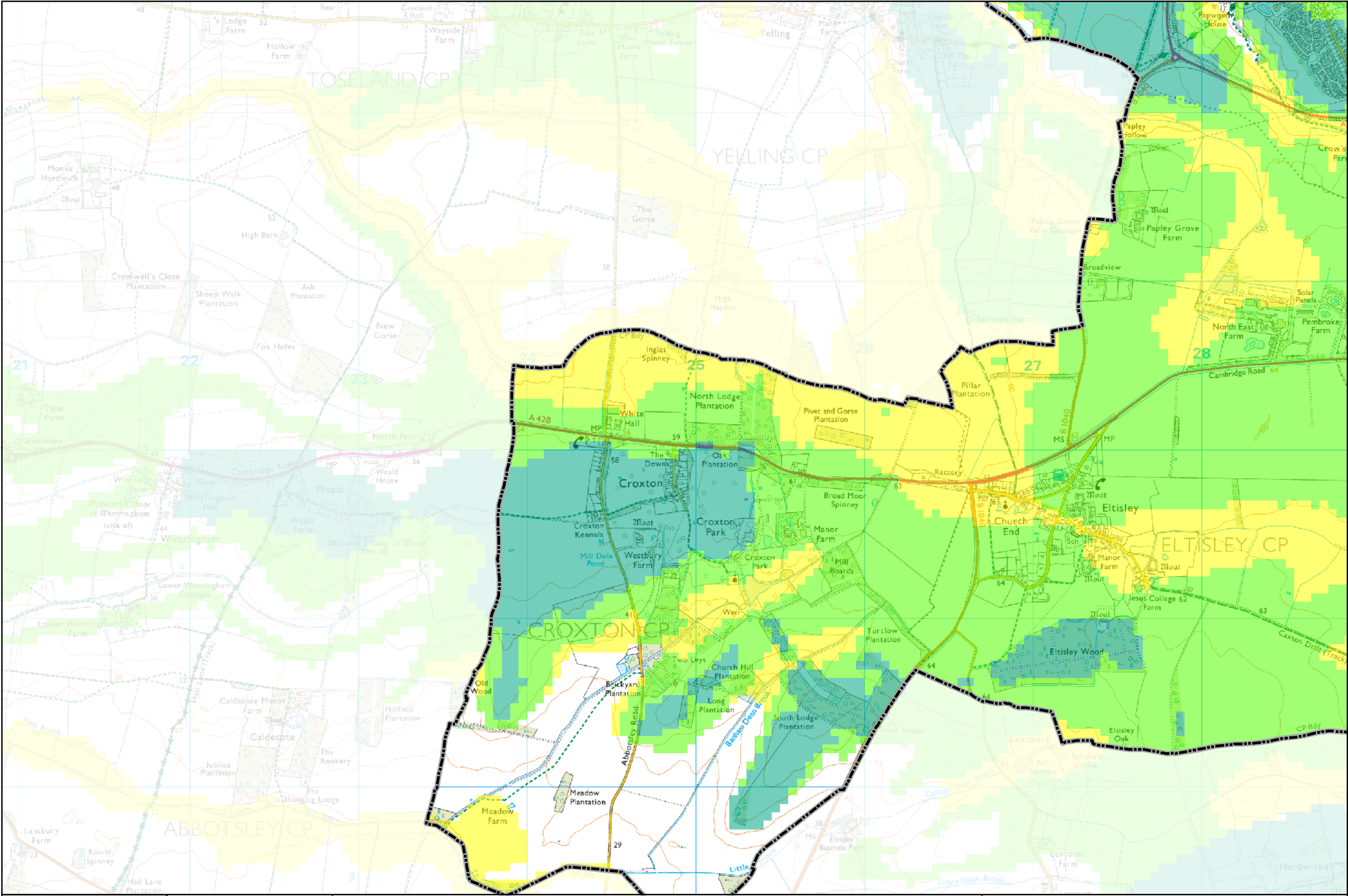
Notes

The Susceptibility to Groundwater Flooding dataset indicates areas where geological conditions could enable groundwater flooding to occur, whether that be close to the ground surface or at the surface. It has been produced by the British Geological Survey (BGS) and classifies the potential of groundwater flooding, based on geological and hydrogeological information, into three classes:

- 'Limited potential for groundwater flooding to occur';
- 'Potential for groundwater flooding of property situated below ground level';
- 'Potential for groundwater flooding to occur at surface'.

Areas not classified as any of these are not considered to be prone to groundwater flooding.

It should be noted that the data indicates susceptibility to groundwater flooding and not illustrate hazard or risk; therefore should not be used on its own to inform planning decisions at any scale.



Legend

Study Area
--- Cambridge City Boundary
— South Cambridgeshire Boundary

Groundwater Flooding Potential
 Limited potential for groundwater flooding to occur
 Potential for groundwater flooding of property situated below ground level
 Potential for groundwater flooding to occur at surface

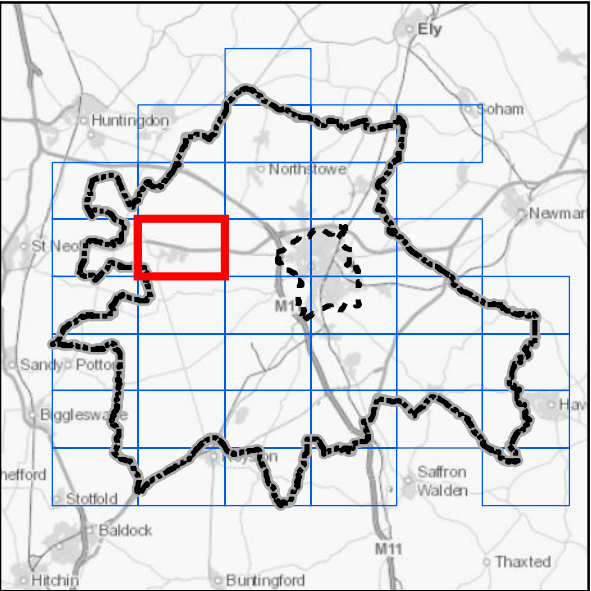
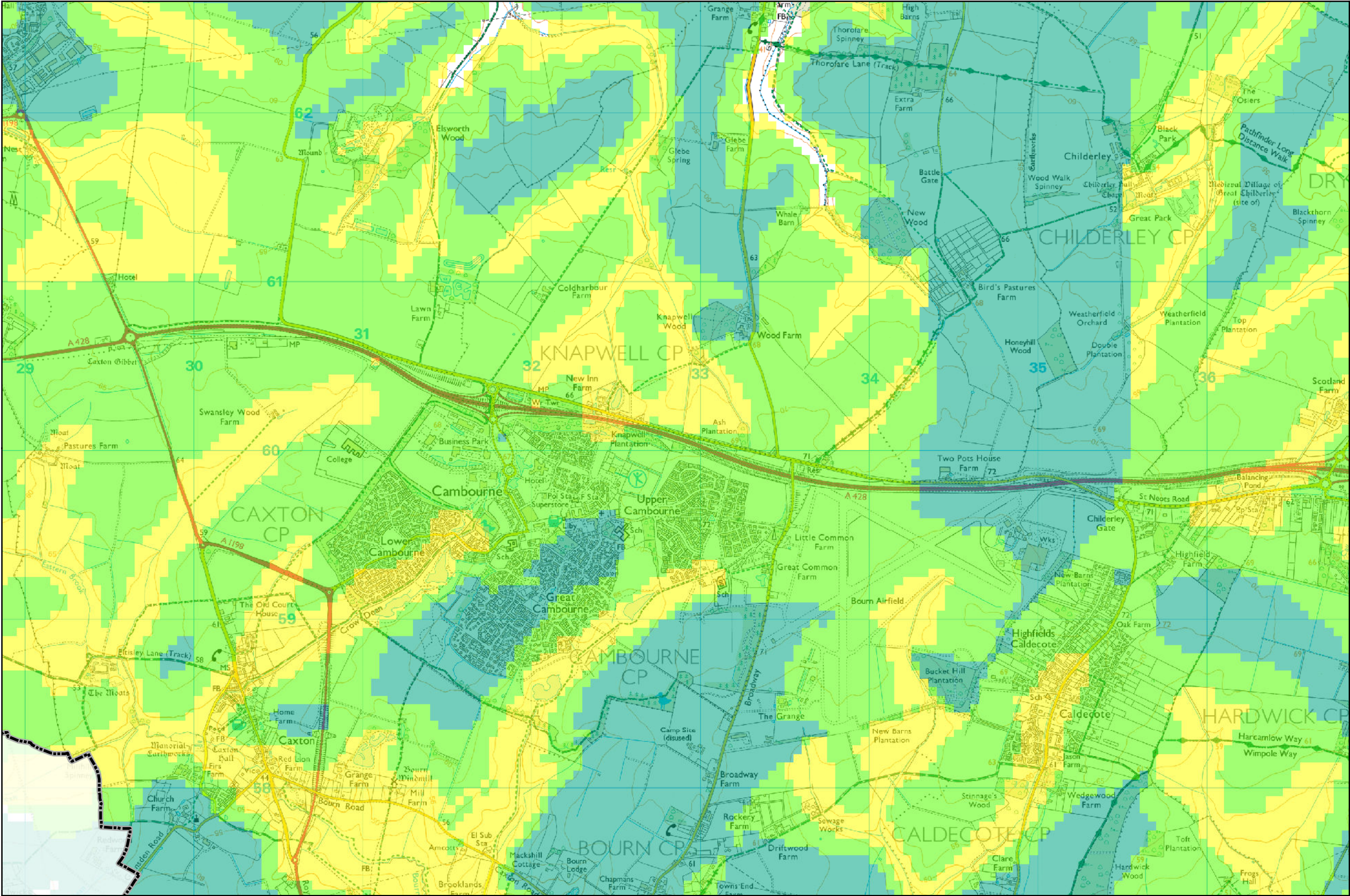
Notes

The Susceptibility to Groundwater Flooding dataset indicates areas where geological conditions could enable groundwater flooding to occur, whether that be close to the ground surface or at the surface. It has been produced by the British Geological Survey (BGS) and classifies the potential of groundwater flooding, based on geological and hydrogeological information, into three classes:

'Limited potential for groundwater flooding to occur';
'Potential for groundwater flooding of property situated below ground level';
'Potential for groundwater flooding to occur at surface'.

Areas not classified as any of these are not considered to be prone to groundwater flooding.

It should be noted that the data indicates susceptibility to groundwater flooding and not illustrate hazard or risk; therefore should not be used on its own to inform planning decisions at any scale.



Legend

Study Area

- Cambridge City Boundary
- South Cambridgeshire Boundary

Groundwater Flooding Potential

- Limited potential for groundwater flooding to occur
- Potential for groundwater flooding of property situated below ground level
- Potential for groundwater flooding to occur at surface

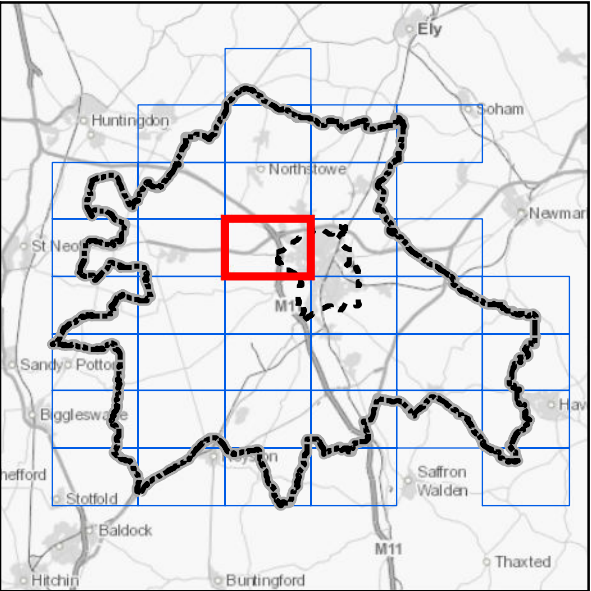
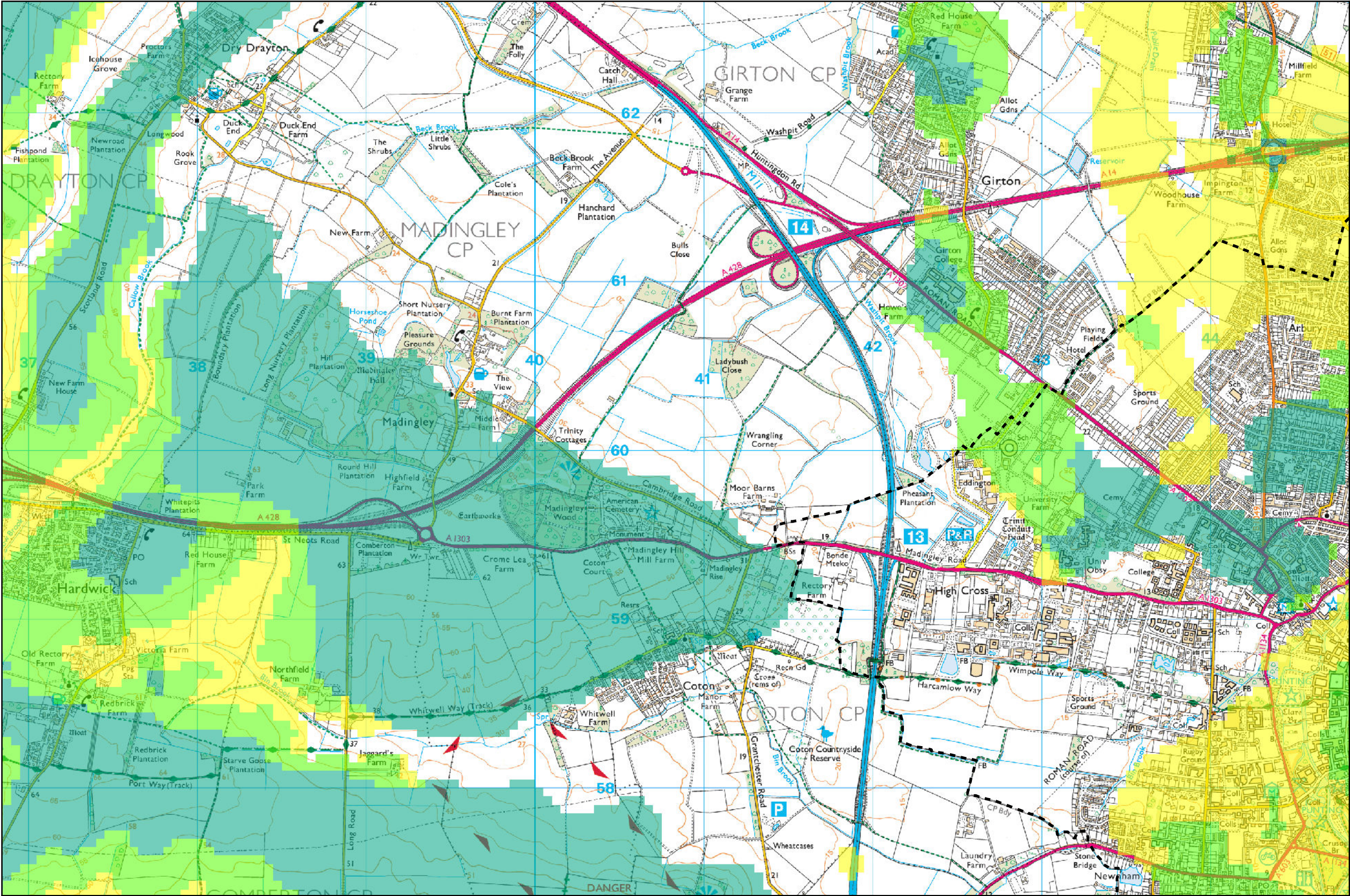
Notes

The Susceptibility to Groundwater Flooding dataset indicates areas where geological conditions could enable groundwater flooding to occur, whether that be close to the ground surface or at the surface. It has been produced by the British Geological Survey (BGS) and classifies the potential of groundwater flooding, based on geological and hydrogeological information, into three classes:

- 'Limited potential for groundwater flooding to occur';
- 'Potential for groundwater flooding of property situated below ground level';
- 'Potential for groundwater flooding to occur at surface'.

Areas not classified as any of these are not considered to be prone to groundwater flooding.

It should be noted that the data indicates susceptibility to groundwater flooding and not illustrate hazard or risk; therefore should not be used on its own to inform planning decisions at any scale.



- Legend**
- Study Area**
- Cambridge City Boundary
 - South Cambridgeshire Boundary
- Groundwater Flooding Potential**
- Limited potential for groundwater flooding to occur
 - Potential for groundwater flooding of property situated below ground level
 - Potential for groundwater flooding to occur at surface

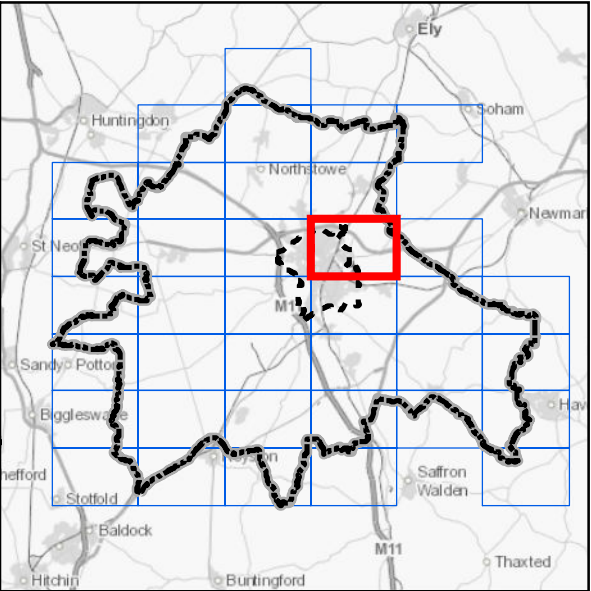
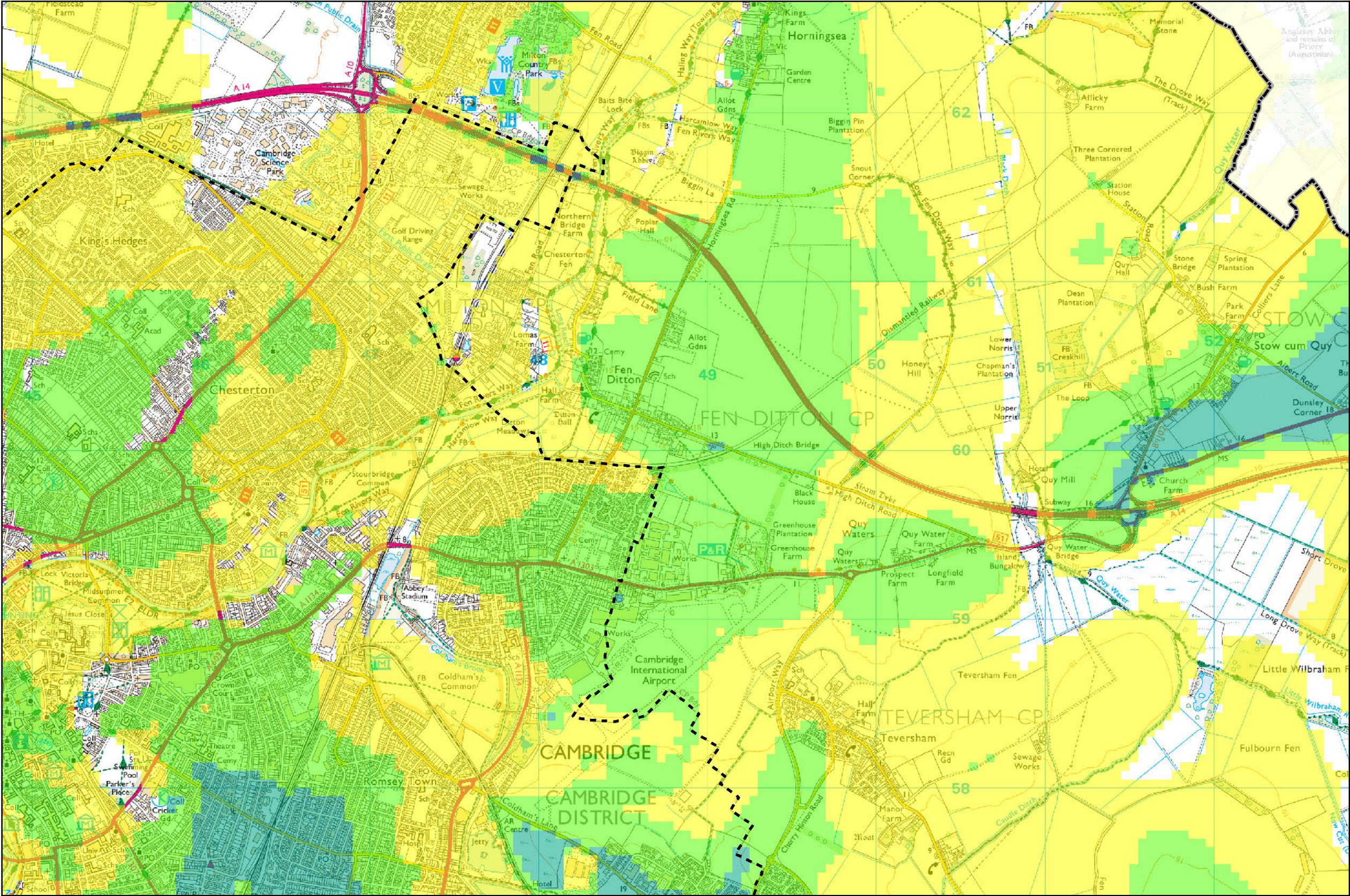
Notes

The Susceptibility to Groundwater Flooding dataset indicates areas where geological conditions could enable groundwater flooding to occur, whether that be close to the ground surface or at the surface. It has been produced by the British Geological Survey (BGS) and classifies the potential of groundwater flooding, based on geological and hydrogeological information, into three classes:

- 'Limited potential for groundwater flooding to occur';
- 'Potential for groundwater flooding of property situated below ground level';
- 'Potential for groundwater flooding to occur at surface'.

Areas not classified as any of these are not considered to be prone to groundwater flooding.

It should be noted that the data indicates susceptibility to groundwater flooding and not illustrate hazard or risk; therefore should not be used on its own to inform planning decisions at any scale.



- Legend**
- Study Area**
- Cambridge City Boundary
 - South Cambridgeshire Boundary
- Groundwater Flooding Potential**
- Limited potential for groundwater flooding to occur
 - Potential for groundwater flooding of property situated below ground level
 - Potential for groundwater flooding to occur at surface

Notes

The Susceptibility to Groundwater Flooding dataset indicates areas where geological conditions could enable groundwater flooding to occur, whether that be close to the ground surface or at the surface. It has been produced by the British Geological Survey (BGS) and classifies the potential of groundwater flooding, based on geological and hydrogeological information, into three classes:

- 'Limited potential for groundwater flooding to occur';
- 'Potential for groundwater flooding of property situated below ground level';
- 'Potential for groundwater flooding to occur at surface'.

Areas not classified as any of these are not considered to be prone to groundwater flooding.

It should be noted that the data indicates susceptibility to groundwater flooding and not illustrate hazard or risk; therefore should not be used on its own to inform planning decisions at any scale.



Client 

Greater Cambridge Integrated Water Management Study

Susceptibility to Groundwater Flooding

012 km

Contains OS data © Crown Copyright and database right 2020
Contains British Geological Survey materials © UKRI 2020. All rights reserved.

Sheet Number:

13 of 37

1:23,960 @ A3

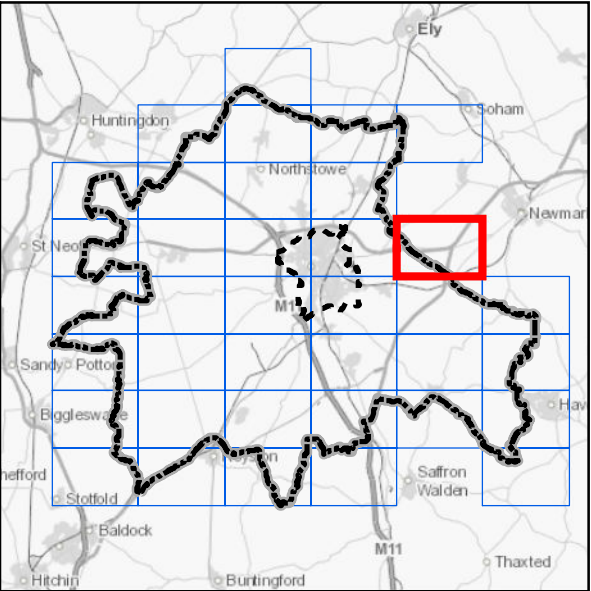
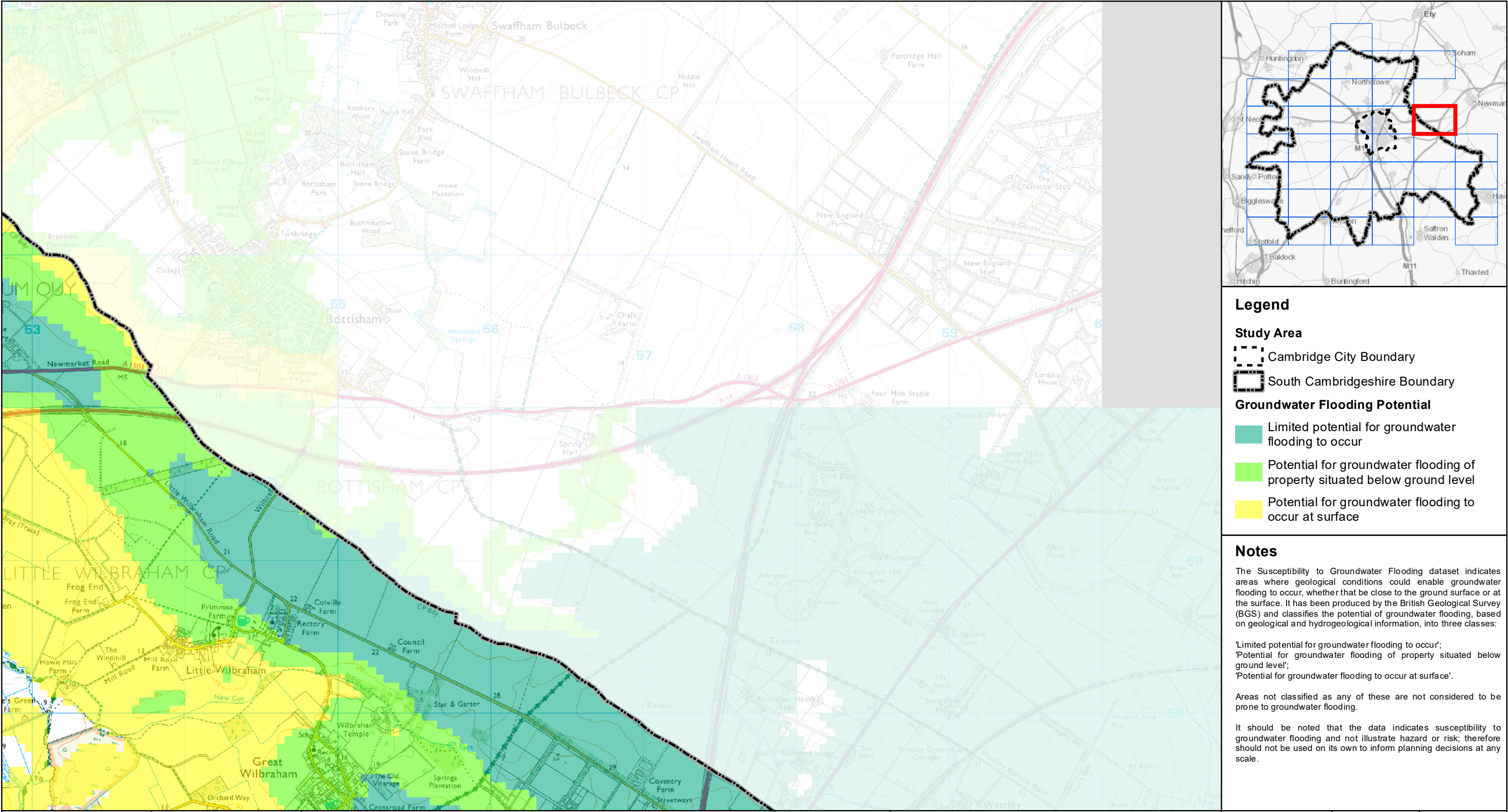
Date: 17/09/2020

Drawn: MD

Checked: CW

Figure: 48444/4005/GIS024

Rev A



Legend

Study Area

- Cambridge City Boundary
- South Cambridgeshire Boundary

Groundwater Flooding Potential

- Limited potential for groundwater flooding to occur
- Potential for groundwater flooding of property situated below ground level
- Potential for groundwater flooding to occur at surface

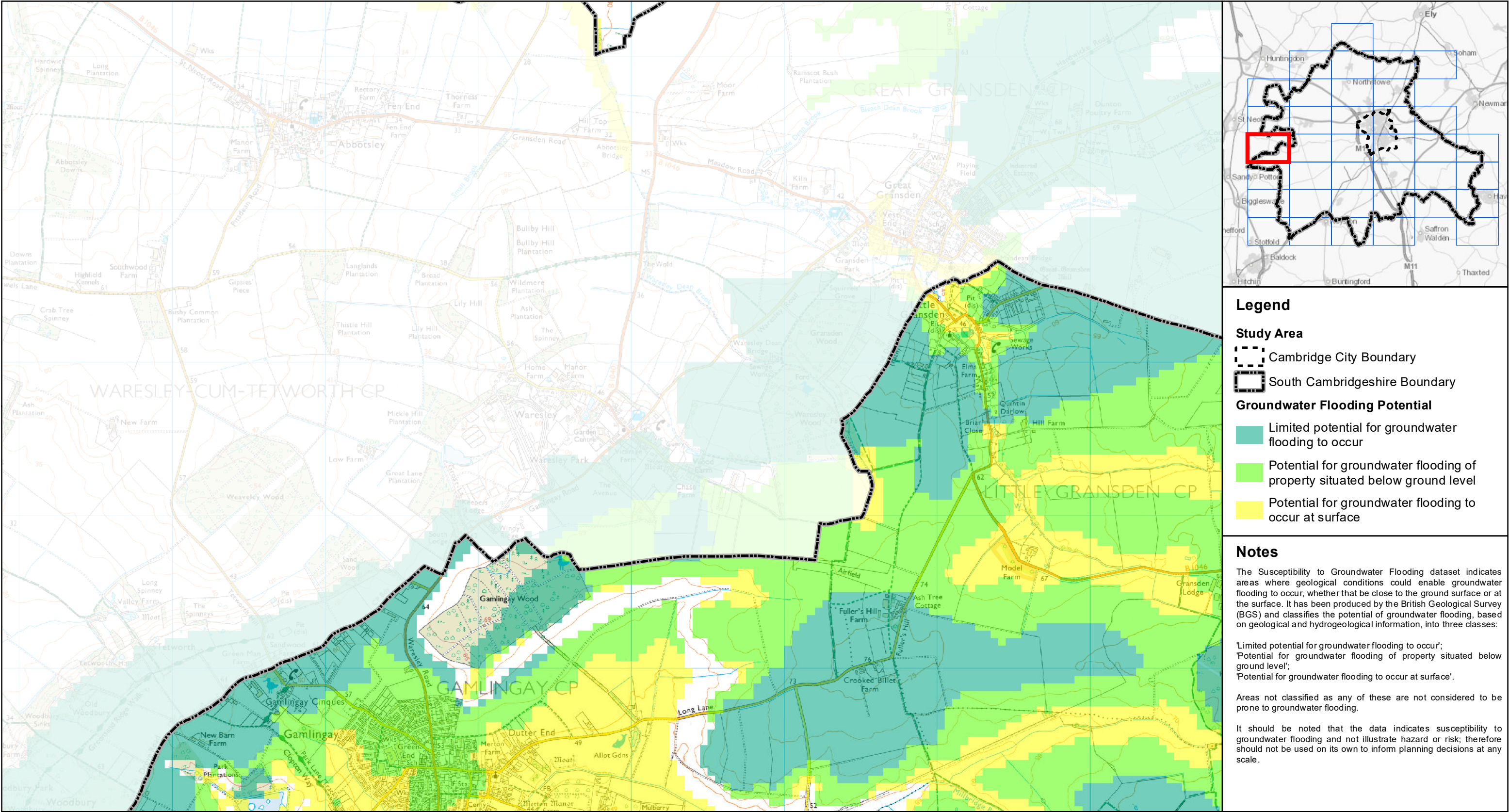
Notes

The Susceptibility to Groundwater Flooding dataset indicates areas where geological conditions could enable groundwater flooding to occur, whether that be close to the ground surface or at the surface. It has been produced by the British Geological Survey (BGS) and classifies the potential of groundwater flooding, based on geological and hydrogeological information, into three classes:

'Limited potential for groundwater flooding to occur';
'Potential for groundwater flooding of property situated below ground level';
'Potential for groundwater flooding to occur at surface'.

Areas not classified as any of these are not considered to be prone to groundwater flooding.

It should be noted that the data indicates susceptibility to groundwater flooding and not illustrate hazard or risk; therefore should not be used on its own to inform planning decisions at any scale.



Legend

Study Area

- Cambridge City Boundary
- South Cambridgeshire Boundary

Groundwater Flooding Potential

- Limited potential for groundwater flooding to occur
- Potential for groundwater flooding of property situated below ground level
- Potential for groundwater flooding to occur at surface

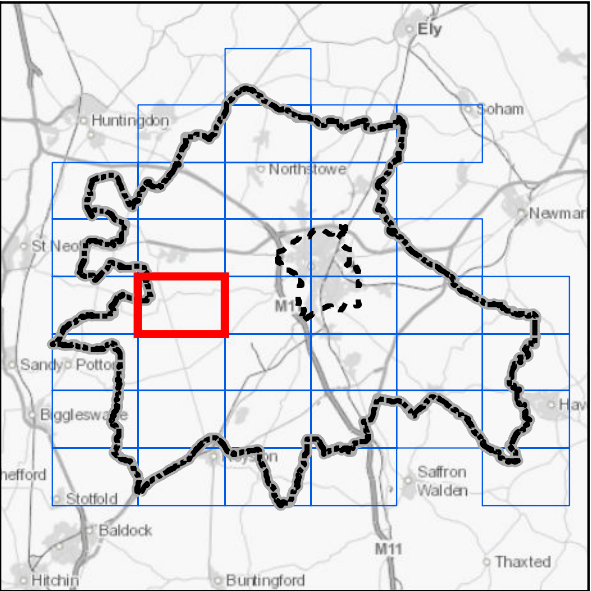
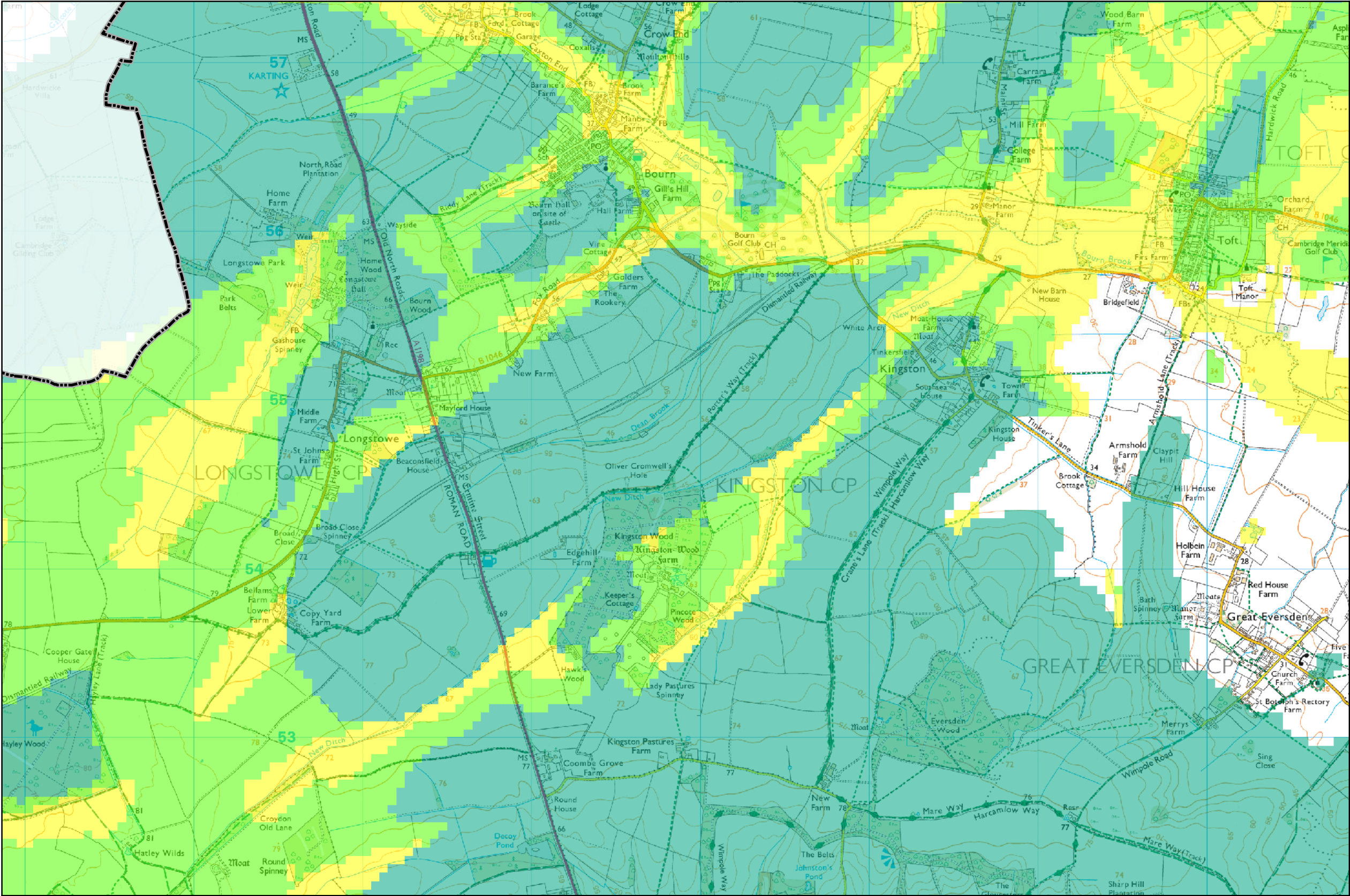
Notes

The Susceptibility to Groundwater Flooding dataset indicates areas where geological conditions could enable groundwater flooding to occur, whether that be close to the ground surface or at the surface. It has been produced by the British Geological Survey (BGS) and classifies the potential of groundwater flooding, based on geological and hydrogeological information, into three classes:

'Limited potential for groundwater flooding to occur';
'Potential for groundwater flooding of property situated below ground level';
'Potential for groundwater flooding to occur at surface'.

Areas not classified as any of these are not considered to be prone to groundwater flooding.

It should be noted that the data indicates susceptibility to groundwater flooding and not illustrate hazard or risk; therefore should not be used on its own to inform planning decisions at any scale.



Legend

Study Area

- Cambridge City Boundary
- South Cambridgeshire Boundary

Groundwater Flooding Potential

- Limited potential for groundwater flooding to occur
- Potential for groundwater flooding of property situated below ground level
- Potential for groundwater flooding to occur at surface

Notes

The Susceptibility to Groundwater Flooding dataset indicates areas where geological conditions could enable groundwater flooding to occur, whether that be close to the ground surface or at the surface. It has been produced by the British Geological Survey (BGS) and classifies the potential of groundwater flooding, based on geological and hydrogeological information, into three classes:

- 'Limited potential for groundwater flooding to occur';
- 'Potential for groundwater flooding of property situated below ground level';
- 'Potential for groundwater flooding to occur at surface'.

Areas not classified as any of these are not considered to be prone to groundwater flooding.

It should be noted that the data indicates susceptibility to groundwater flooding and not illustrate hazard or risk; therefore should not be used on its own to inform planning decisions at any scale.



Greater Cambridge Integrated Water Management Study

Susceptibility to Groundwater Flooding

0 1 2 km

Contains OS data © Crown Copyright and database right 2020
Contains British Geological Survey materials © UKRI 2020. All rights reserved.

Sheet Number: 16 of 37	1:23,960 @ A3	Date: 17/09/2020
	Drawn: MD	Checked: CW
	Figure: 48444/4005/GIS024	Rev A