

Legend

- Cambridge City Boundary
- South Cambridgeshire Boundary

Surface Water Flood Extent

- 3.3% (1 in 30) AEP Event
- 1% (1 in 100) AEP Event
- 0.1% (1 in 1000) AEP Event

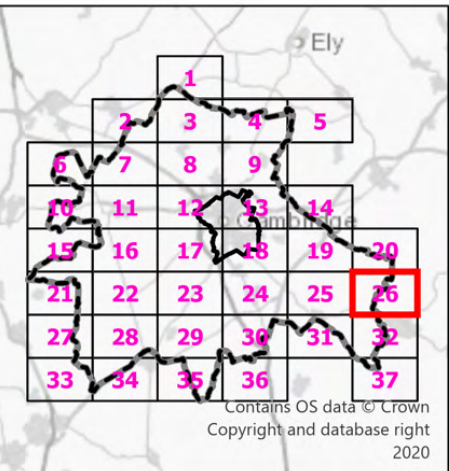
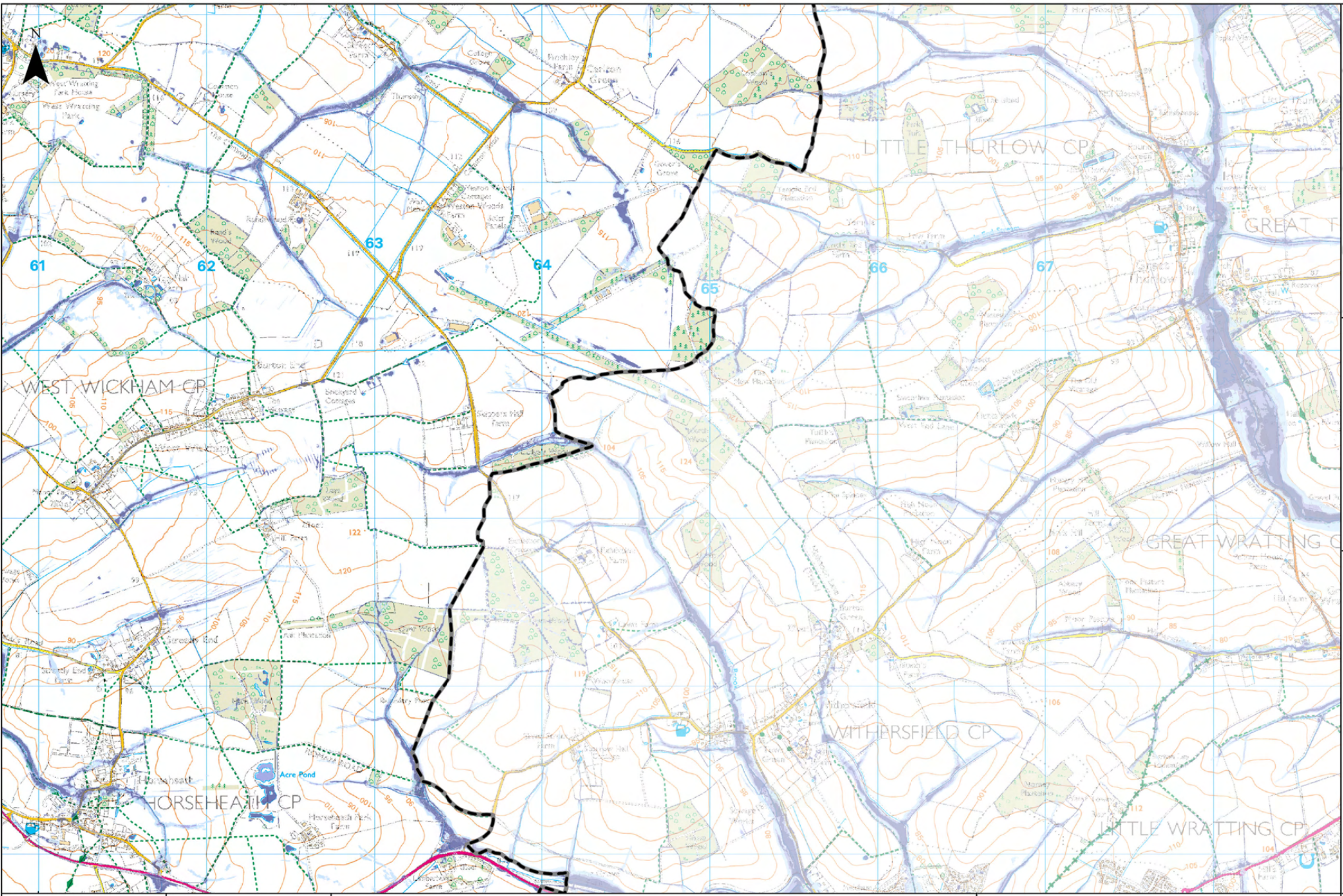
Notes

Risk of Flooding from Surface Water (RoFSW) map is an assessment of where surface water flooding may occur when rainwater does not drain away through the normal drainage systems or soak into the ground, but lies on or flows over the ground instead. It includes information about flooding extents and depths. It is produced using national scale modelling and enhanced with compatible, locally produced modelling from lead local flood authorities (LLFAs).

RoFSW is a probabilistic product, meaning that it shows the overall risk, rather than the risk associated with a specific event or scenario. In externally published versions of this dataset, risk is displayed as one of three likelihood bandings:

- High - greater than or equal to 3.3% chance in any given year (1 in 30)
- Medium - less than 3.3% (1 in 30) but greater than or equal to 1% (1 in 100) chance in any given year
- Low - less than 1% (1 in 100) chance in any given year

These outputs are advised to not be used at the property level, at scales more detailed than 1:50,000 as the data is open to misinterpretation; due to how they are produced, these extents are not appropriate to act as the sole evidence for any specific planning or regulatory decision or assessment of risk in relation to flooding at any scale without further supporting studies or evidence.



Legend

- Cambridge City Boundary
- South Cambridgeshire Boundary

Surface Water Flood Extent

- 3.3% (1 in 30) AEP Event
- 1% (1 in 100) AEP Event
- 0.1% (1 in 1000) AEP Event

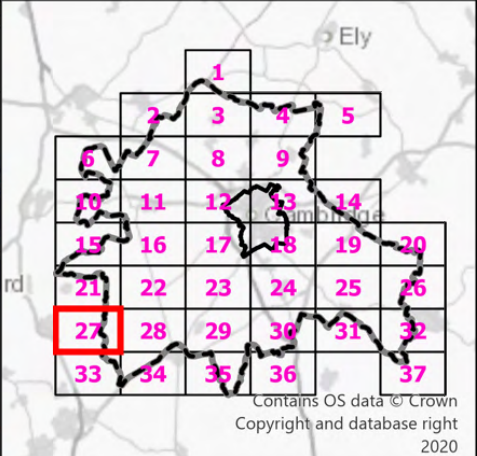
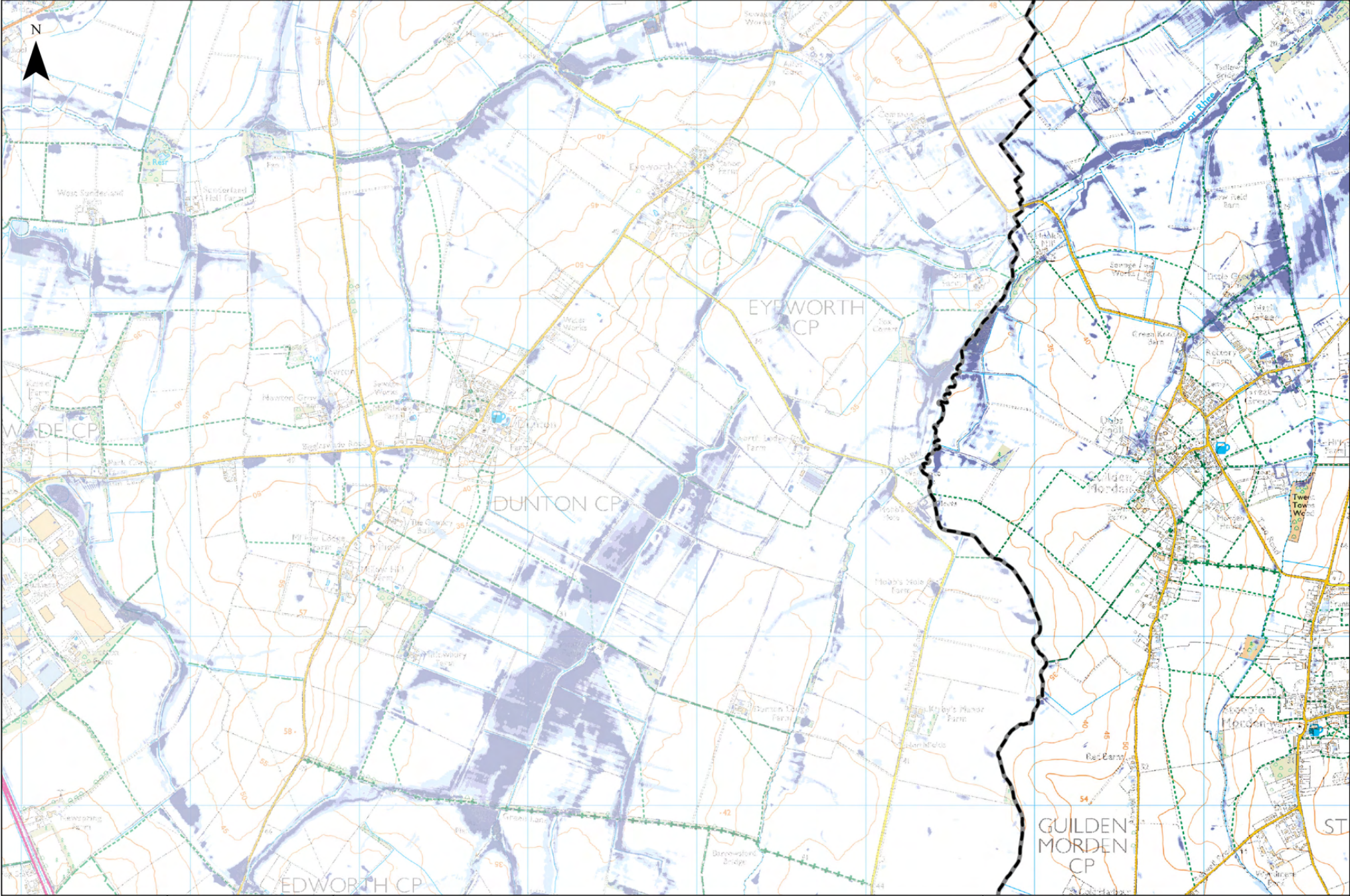
Notes

Risk of Flooding from Surface Water (RoFSW) map is an assessment of where surface water flooding may occur when rainwater does not drain away through the normal drainage systems or soak into the ground, but lies on or flows over the ground instead. It includes information about flooding extents and depths. It is produced using national scale modelling and enhanced with compatible, locally produced modelling from lead local flood authorities (LLFAs).

RoFSW is a probabilistic product, meaning that it shows the overall risk, rather than the risk associated with a specific event or scenario. In externally published versions of this dataset, risk is displayed as one of three likelihood bandings:

- High - greater than or equal to 3.3% chance in any given year (1 in 30)
- Medium - less than 3.3% (1 in 30) but greater than or equal to 1% (1 in 100) chance in any given year
- Low - less than 1% (1 in 100) chance in any given year

These outputs are advised to not be used at the property level, at scales more detailed than 1:50,000 as the data is open to misinterpretation; due to how they are produced, these extents are not appropriate to act as the sole evidence for any specific planning or regulatory decision or assessment of risk in relation to flooding at any scale without further supporting studies or evidence.



Legend

- Cambridge City Boundary
- South Cambridgeshire Boundary
- Surface Water Flood Extent**
 - 3.3% (1 in 30) AEP Event
 - 1% (1 in 100) AEP Event
 - 0.1% (1 in 1000) AEP Event

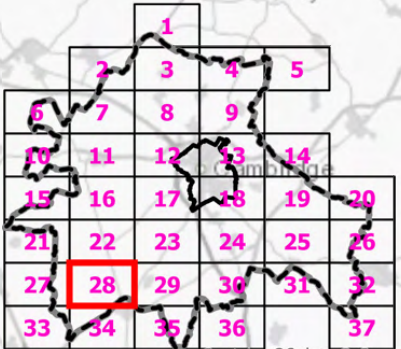
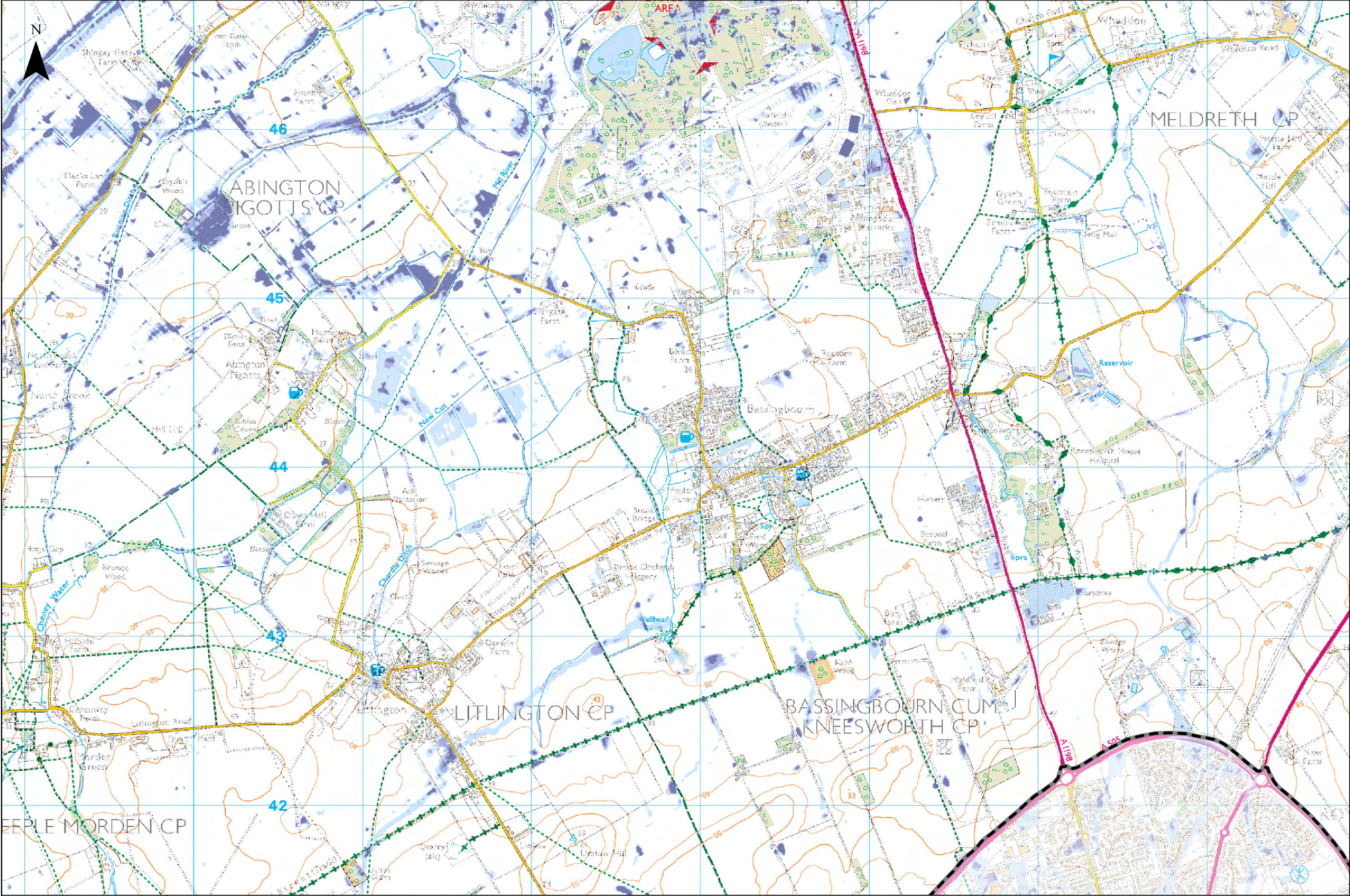
Notes

Risk of Flooding from Surface Water (RoFSW) map is an assessment of where surface water flooding may occur when rainwater does not drain away through the normal drainage systems or soak into the ground, but lies on or flows over the ground instead. It includes information about flooding extents and depths. It is produced using national scale modelling and enhanced with compatible, locally produced modelling from lead local flood authorities (LLFAs).

RoFSW is a probabilistic product, meaning that it shows the overall risk, rather than the risk associated with a specific event or scenario. In externally published versions of this dataset, risk is displayed as one of three likelihood bandings:

High - greater than or equal to 3.3% chance in any given year (1 in 30)
Medium - less than 3.3% (1 in 30) but greater than or equal to 1% (1 in 100) chance in any given year
Low - less than 1% (1 in 100) chance in any given year

These outputs are advised to not be used at the property level, at scales more detailed than 1:50,000 as the data is open to misinterpretation; due to how they are produced, these extents are not appropriate to act as the sole evidence for any specific planning or regulatory decision or assessment of risk in relation to flooding at any scale without further supporting studies or evidence.



Contains OS data © Crown Copyright and database right 2020

Legend

- Cambridge City Boundary
- South Cambridgeshire Boundary
- Surface Water Flood Extent
 - 3.3% (1 in 30) AEP Event
 - 1% (1 in 100) AEP Event
 - 0.1% (1 in 1000) AEP Event

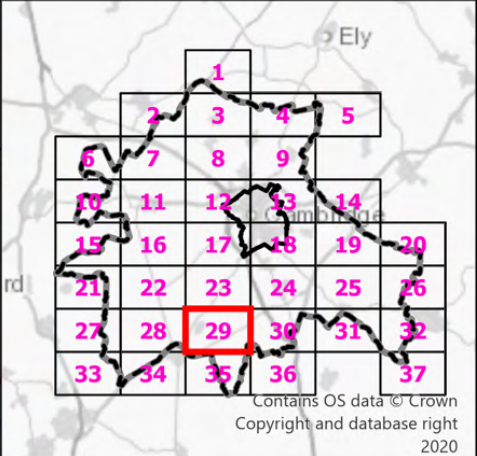
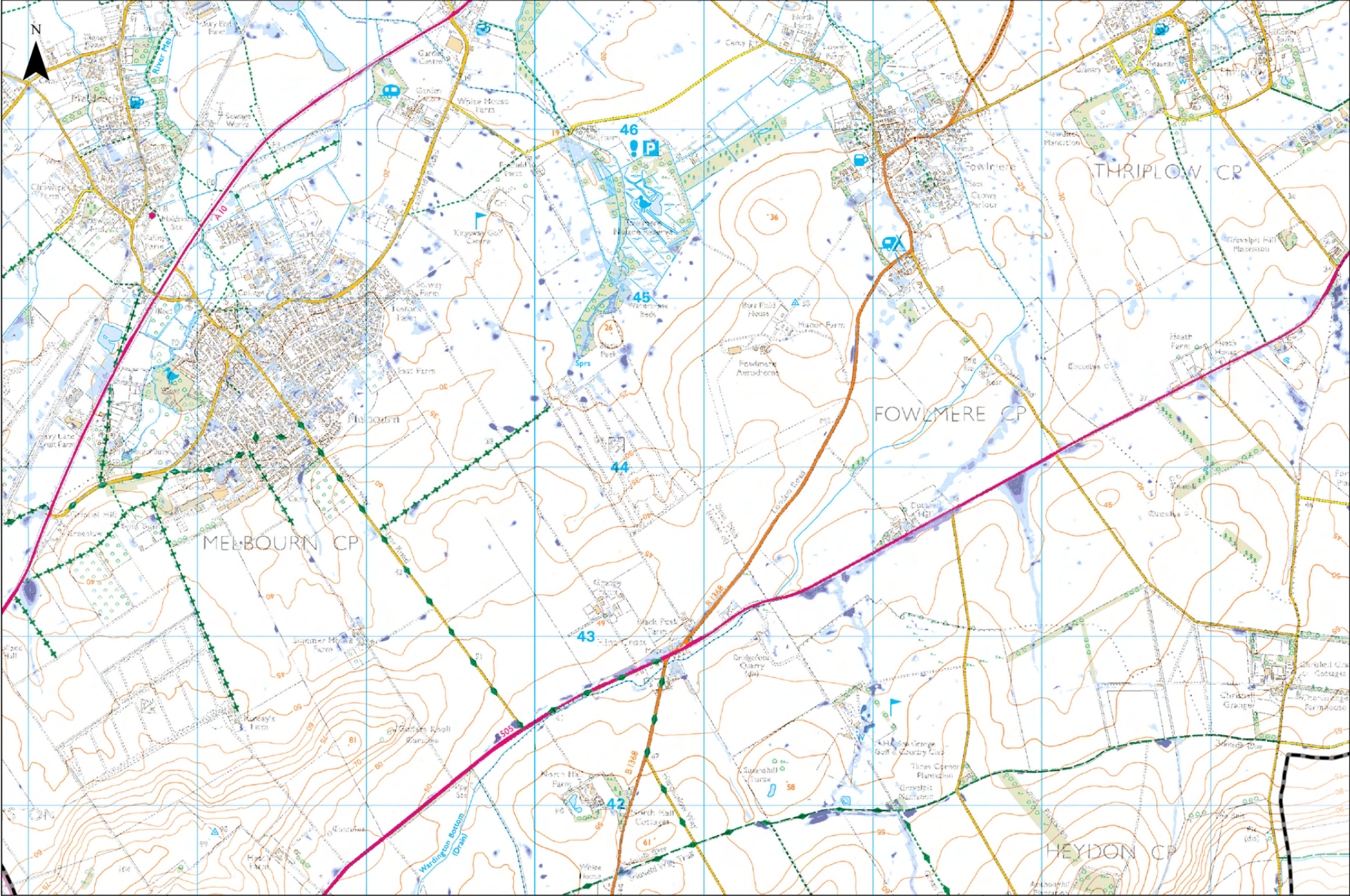
Notes

Risk of Flooding from Surface Water (RoFSW) map is an assessment of where surface water flooding may occur when rainwater does not drain away through the normal drainage systems or soak into the ground, but lies on or flows over the ground instead. It includes information about flooding extents and depths. It is produced using national scale modelling and enhanced with compatible, locally produced modelling from lead local flood authorities (LLFAs).

RoFSW is a probabilistic product, meaning that it shows the overall risk, rather than the risk associated with a specific event or scenario. In externally published versions of this dataset, risk is displayed as one of three likelihood bandings:

- High - greater than or equal to 3.3% chance in any given year (1 in 30)
- Medium - less than 3.3% (1 in 30) but greater than or equal to 1% (1 in 100) chance in any given year
- Low - less than 1% (1 in 100) chance in any given year

These outputs are advised to not be used at the property level, at scales more detailed than 1:50,000 as the data is open to misinterpretation; due to how they are produced, these extents are not appropriate to act as the sole evidence for any specific planning or regulatory decision or assessment of risk in relation to flooding at any scale without further supporting studies or evidence.



Legend

- Cambridge City Boundary
- South Cambridgeshire Boundary

Surface Water Flood Extent

- 3.3% (1 in 30) AEP Event
- 1% (1 in 100) AEP Event
- 0.1% (1 in 1000) AEP Event

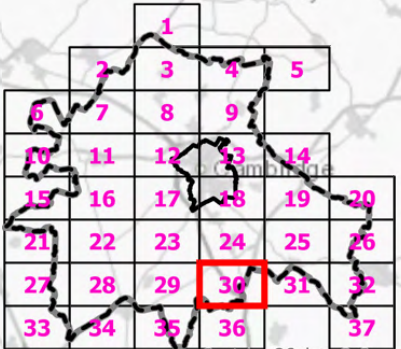
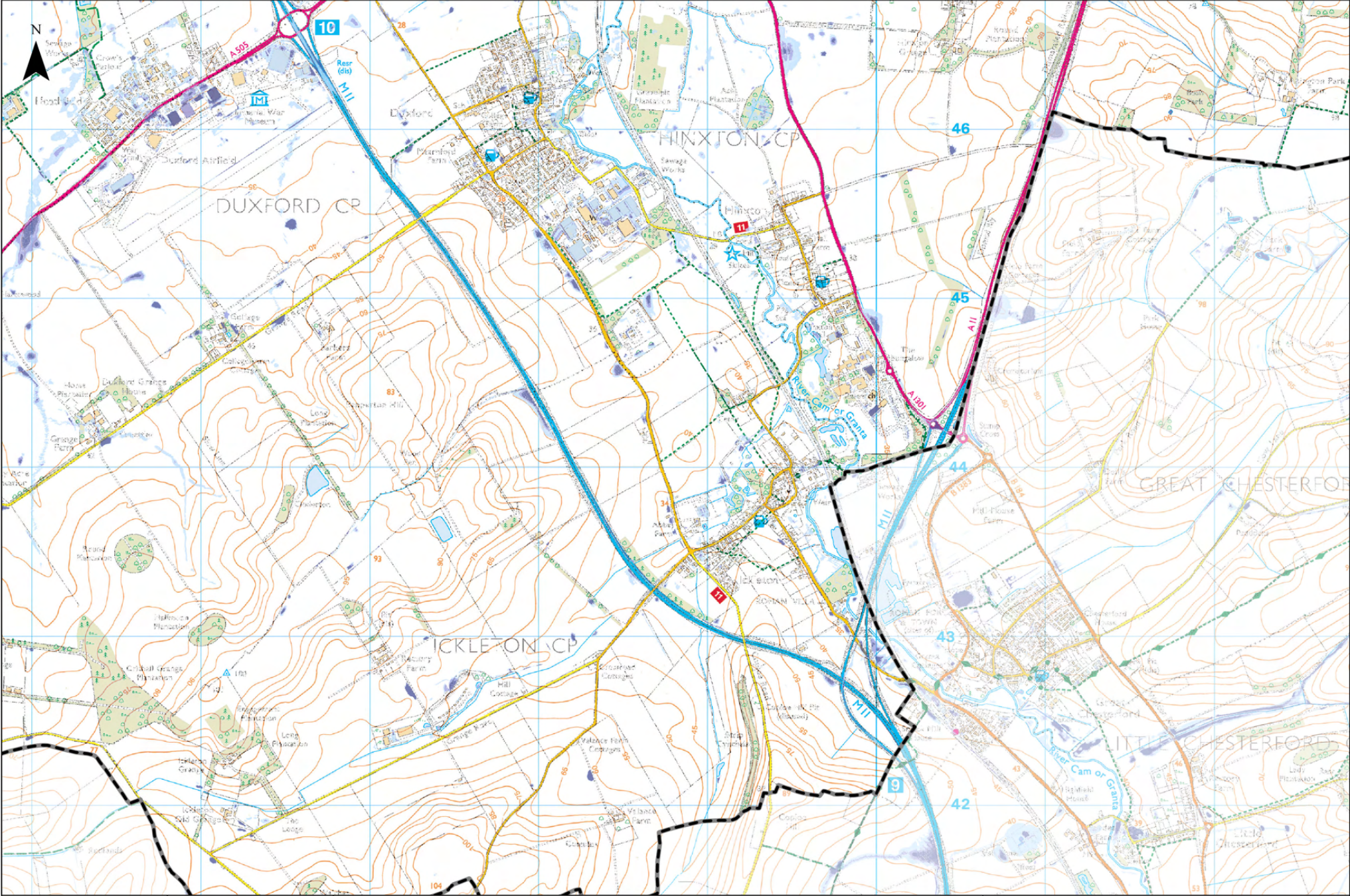
Notes

Risk of Flooding from Surface Water (RoFSW) map is an assessment of where surface water flooding may occur when rainwater does not drain away through the normal drainage systems or soak into the ground, but lies on or flows over the ground instead. It includes information about flooding extents and depths. It is produced using national scale modelling and enhanced with compatible, locally produced modelling from lead local flood authorities (LLFAs).

RoFSW is a probabilistic product, meaning that it shows the overall risk, rather than the risk associated with a specific event or scenario. In externally published versions of this dataset, risk is displayed as one of three likelihood bandings:

- High - greater than or equal to 3.3% chance in any given year (1 in 30)
- Medium - less than 3.3% (1 in 30) but greater than or equal to 1% (1 in 100) chance in any given year
- Low - less than 1% (1 in 100) chance in any given year

These outputs are advised to not be used at the property level, at scales more detailed than 1:50,000 as the data is open to misinterpretation; due to how they are produced, these extents are not appropriate to act as the sole evidence for any specific planning or regulatory decision or assessment of risk in relation to flooding at any scale without further supporting studies or evidence.



Contains OS data © Crown Copyright and database right 2020

Legend

- Cambridge City Boundary
- South Cambridgeshire Boundary
- Surface Water Flood Extent**
 - 3.3% (1 in 30) AEP Event
 - 1% (1 in 100) AEP Event
 - 0.1% (1 in 1000) AEP Event

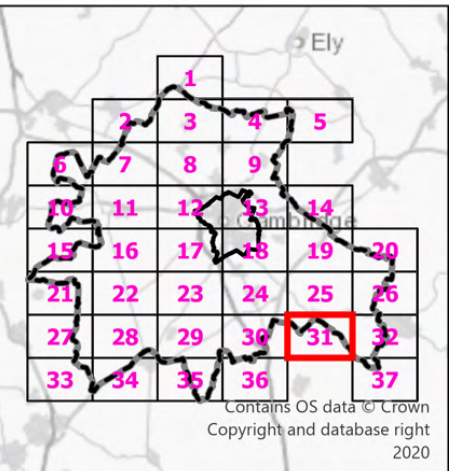
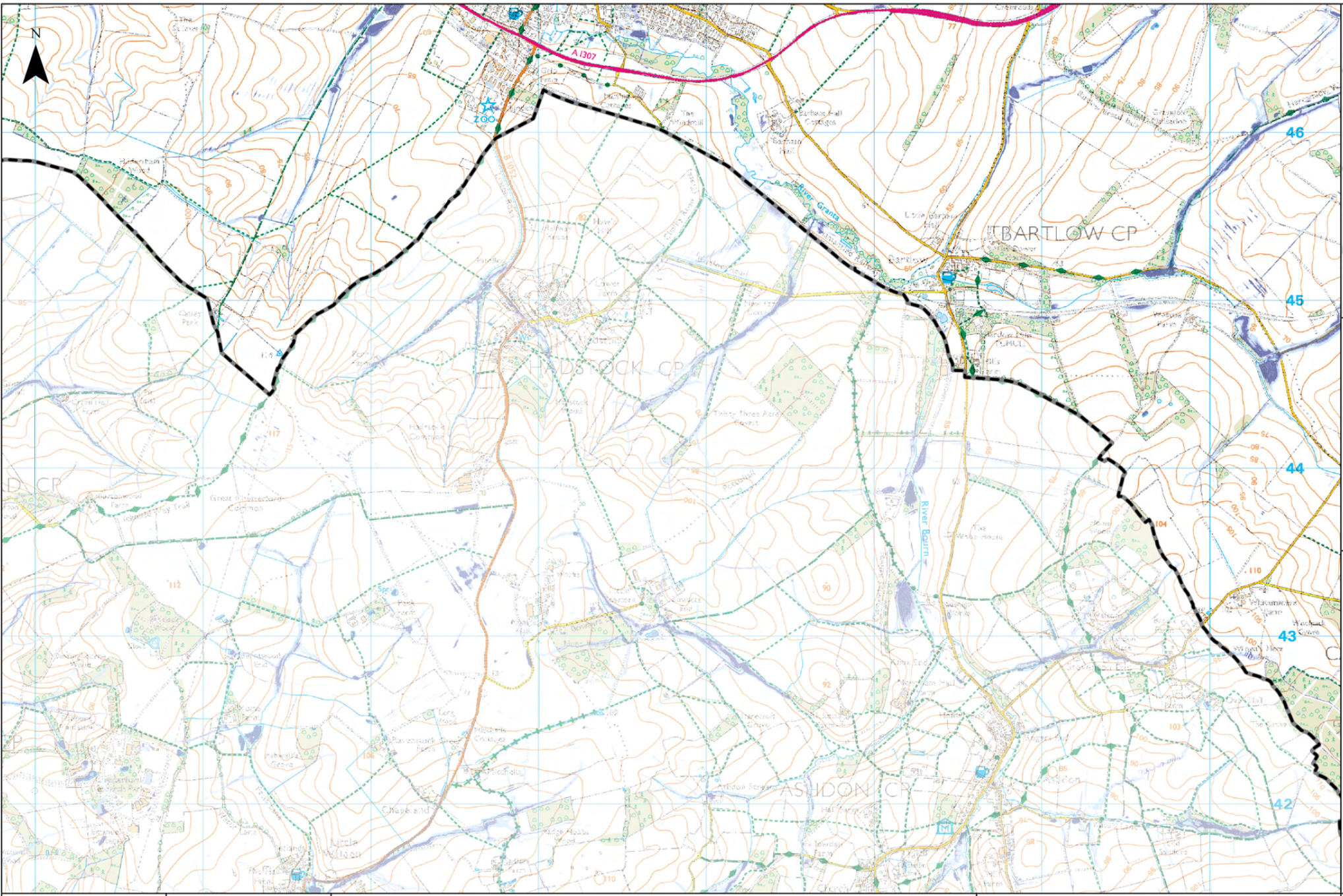
Notes

Risk of Flooding from Surface Water (RoFSW) map is an assessment of where surface water flooding may occur when rainwater does not drain away through the normal drainage systems or soak into the ground, but lies on or flows over the ground instead. It includes information about flooding extents and depths. It is produced using national scale modelling and enhanced with compatible, locally produced modelling from lead local flood authorities (LLFAs).

RoFSW is a probabilistic product, meaning that it shows the overall risk, rather than the risk associated with a specific event or scenario. In externally published versions of this dataset, risk is displayed as one of three likelihood bandings:

- High - greater than or equal to 3.3% chance in any given year (1 in 30)
- Medium - less than 3.3% (1 in 30) but greater than or equal to 1% (1 in 100) chance in any given year
- Low - less than 1% (1 in 100) chance in any given year

These outputs are advised to not be used at the property level, at scales more detailed than 1:50,000 as the data is open to misinterpretation; due to how they are produced, these extents are not appropriate to act as the sole evidence for any specific planning or regulatory decision or assessment of risk in relation to flooding at any scale without further supporting studies or evidence.



Legend

- Cambridge City Boundary
- South Cambridgeshire Boundary

Surface Water Flood Extent

- 3.3% (1 in 30) AEP Event
- 1% (1 in 100) AEP Event
- 0.1% (1 in 1000) AEP Event

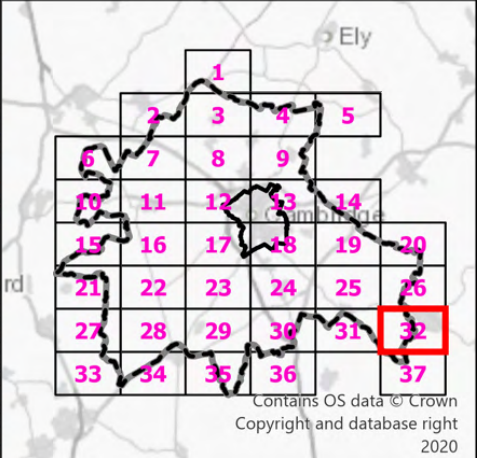
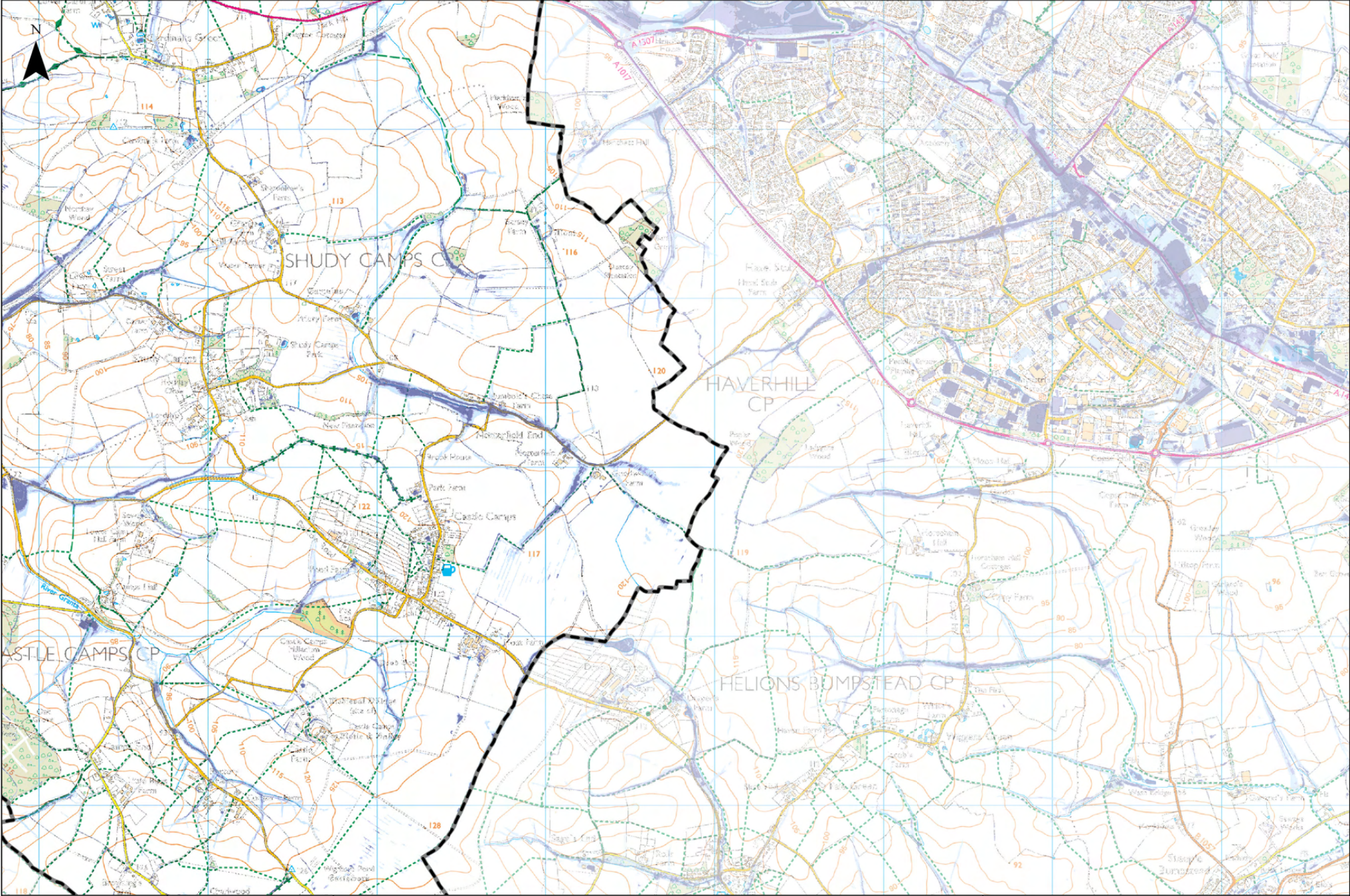
Notes

Risk of Flooding from Surface Water (RoFSW) map is an assessment of where surface water flooding may occur when rainwater does not drain away through the normal drainage systems or soak into the ground, but lies on or flows over the ground instead. It includes information about flooding extents and depths. It is produced using national scale modelling and enhanced with compatible, locally produced modelling from lead local flood authorities (LLFAs).

RoFSW is a probabilistic product, meaning that it shows the overall risk, rather than the risk associated with a specific event or scenario. In externally published versions of this dataset, risk is displayed as one of three likelihood bandings:

- High - greater than or equal to 3.3% chance in any given year (1 in 30)
- Medium - less than 3.3% (1 in 30) but greater than or equal to 1% (1 in 100) chance in any given year
- Low - less than 1% (1 in 100) chance in any given year

These outputs are advised to not be used at the property level, at scales more detailed than 1:50,000 as the data is open to misinterpretation; due to how they are produced, these extents are not appropriate to act as the sole evidence for any specific planning or regulatory decision or assessment of risk in relation to flooding at any scale without further supporting studies or evidence.



Legend

- Cambridge City Boundary
- South Cambridgeshire Boundary
- Surface Water Flood Extent
 - 3.3% (1 in 30) AEP Event
 - 1% (1 in 100) AEP Event
 - 0.1% (1 in 1000) AEP Event

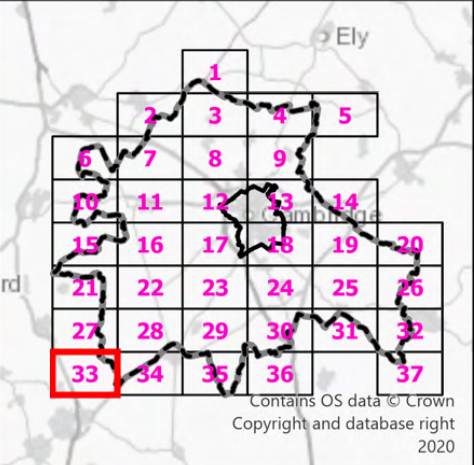
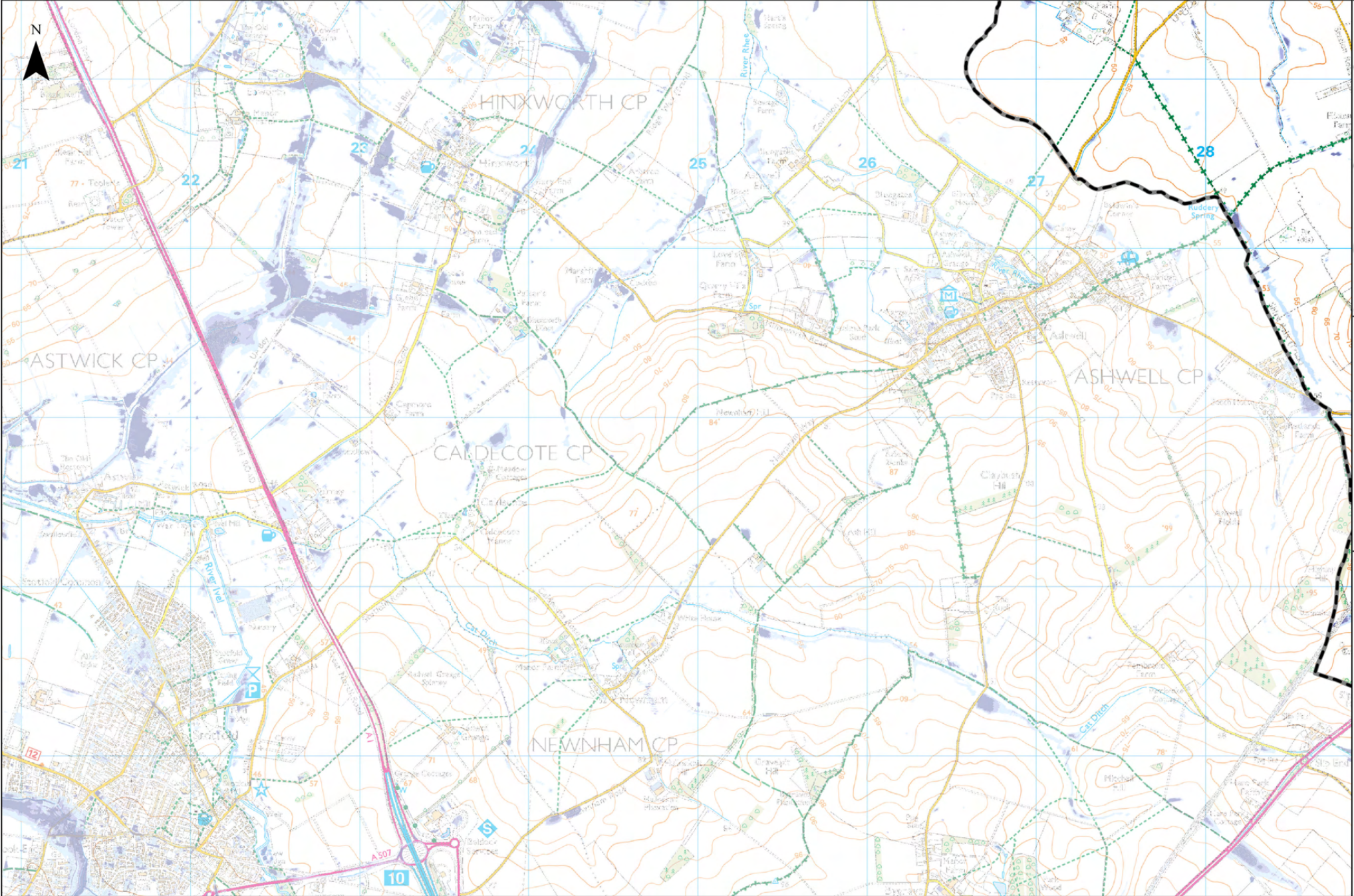
Notes

Risk of Flooding from Surface Water (RoFSW) map is an assessment of where surface water flooding may occur when rainwater does not drain away through the normal drainage systems or soak into the ground, but lies on or flows over the ground instead. It includes information about flooding extents and depths. It is produced using national scale modelling and enhanced with compatible, locally produced modelling from lead local flood authorities (LLFAs).

RoFSW is a probabilistic product, meaning that it shows the overall risk, rather than the risk associated with a specific event or scenario. In externally published versions of this dataset, risk is displayed as one of three likelihood bandings:

High - greater than or equal to 3.3% chance in any given year (1 in 30)
Medium - less than 3.3% (1 in 30) but greater than or equal to 1% (1 in 100) chance in any given year
Low - less than 1% (1 in 100) chance in any given year

These outputs are advised to not be used at the property level, at scales more detailed than 1:50,000 as the data is open to misinterpretation; due to how they are produced, these extents are not appropriate to act as the sole evidence for any specific planning or regulatory decision or assessment of risk in relation to flooding at any scale without further supporting studies or evidence.



Legend

- Cambridge City Boundary
- South Cambridgeshire Boundary

Surface Water Flood Extent

- 3.3% (1 in 30) AEP Event
- 1% (1 in 100) AEP Event
- 0.1% (1 in 1000) AEP Event

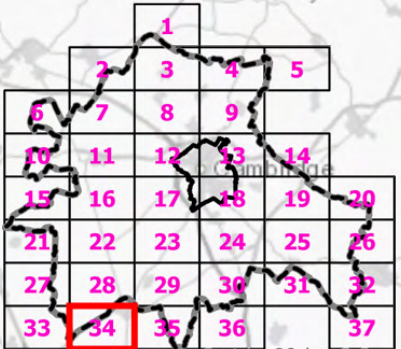
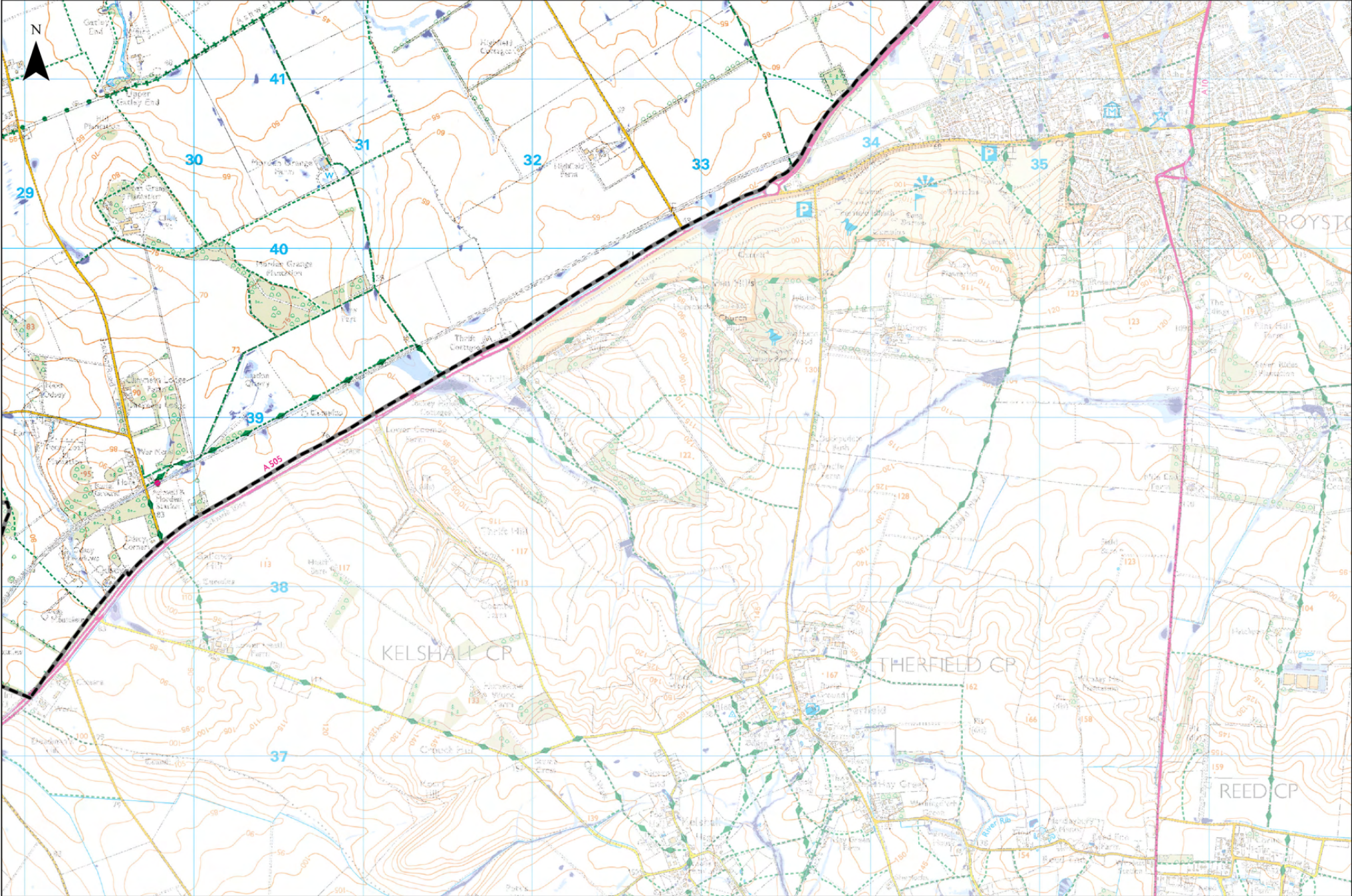
Notes

Risk of Flooding from Surface Water (RoFSW) map is an assessment of where surface water flooding may occur when rainwater does not drain away through the normal drainage systems or soak into the ground, but lies on or flows over the ground instead. It includes information about flooding extents and depths. It is produced using national scale modelling and enhanced with compatible, locally produced modelling from lead local flood authorities (LLFAs).

RoFSW is a probabilistic product, meaning that it shows the overall risk, rather than the risk associated with a specific event or scenario. In externally published versions of this dataset, risk is displayed as one of three likelihood bandings:

- High - greater than or equal to 3.3% chance in any given year (1 in 30)
- Medium - less than 3.3% (1 in 30) but greater than or equal to 1% (1 in 100) chance in any given year
- Low - less than 1% (1 in 100) chance in any given year

These outputs are advised to not be used at the property level, at scales more detailed than 1:50,000 as the data is open to misinterpretation; due to how they are produced, these extents are not appropriate to act as the sole evidence for any specific planning or regulatory decision or assessment of risk in relation to flooding at any scale without further supporting studies or evidence.



Contains OS data © Crown
Copyright and database right
2020

Legend

- Cambridge City Boundary
- South Cambridgeshire Boundary
- Surface Water Flood Extent**
 - 3.3% (1 in 30) AEP Event
 - 1% (1 in 100) AEP Event
 - 0.1% (1 in 1000) AEP Event

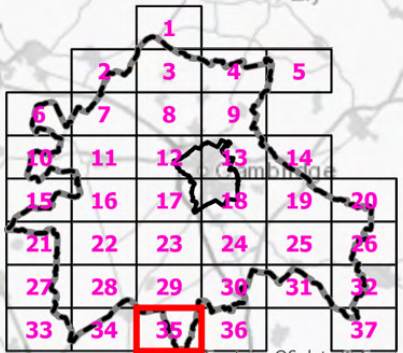
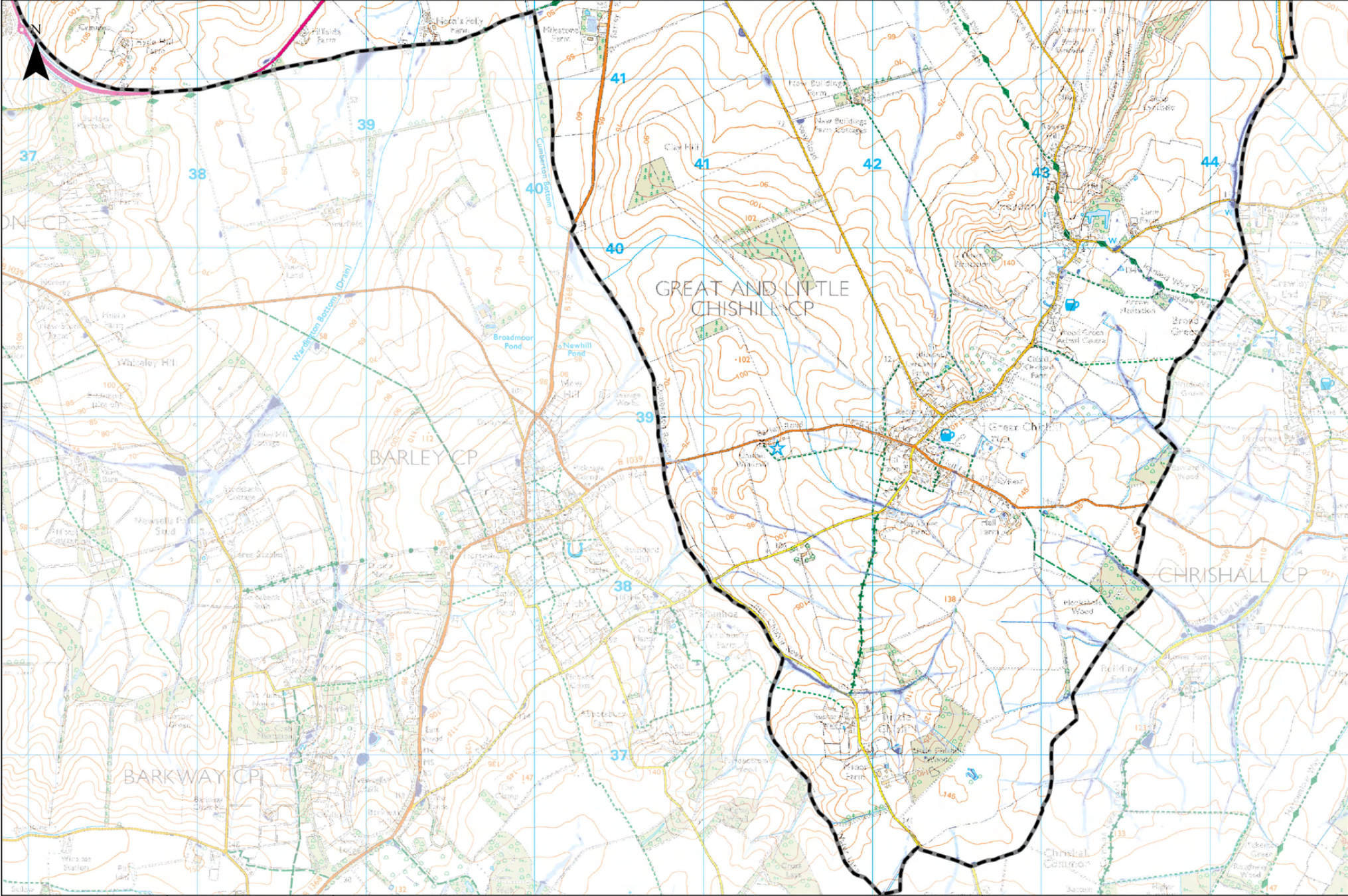
Notes

Risk of Flooding from Surface Water (RoFSW) map is an assessment of where surface water flooding may occur when rainwater does not drain away through the normal drainage systems or soak into the ground, but lies on or flows over the ground instead. It includes information about flooding extents and depths. It is produced using national scale modelling and enhanced with compatible, locally produced modelling from lead local flood authorities (LLFAs).

RoFSW is a probabilistic product, meaning that it shows the overall risk, rather than the risk associated with a specific event or scenario. In externally published versions of this dataset, risk is displayed as one of three likelihood bandings:

- High - greater than or equal to 3.3% chance in any given year (1 in 30)
- Medium - less than 3.3% (1 in 30) but greater than or equal to 1% (1 in 100) chance in any given year
- Low - less than 1% (1 in 100) chance in any given year

These outputs are advised to not be used at the property level, at scales more detailed than 1:50,000 as the data is open to misinterpretation; due to how they are produced, these extents are not appropriate to act as the sole evidence for any specific planning or regulatory decision or assessment of risk in relation to flooding at any scale without further supporting studies or evidence.



Legend

- Cambridge City Boundary
- South Cambridgeshire Boundary
- Surface Water Flood Extent**
 - 3.3% (1 in 30) AEP Event
 - 1% (1 in 100) AEP Event
 - 0.1% (1 in 1000) AEP Event

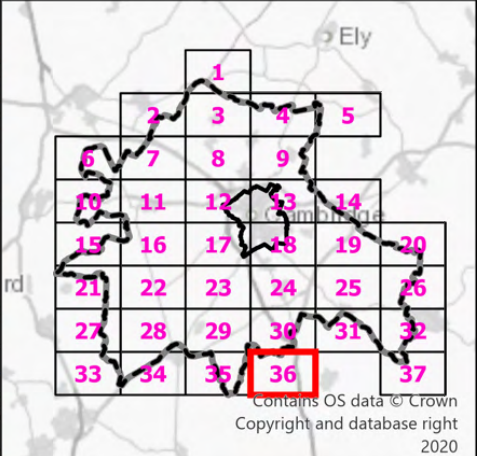
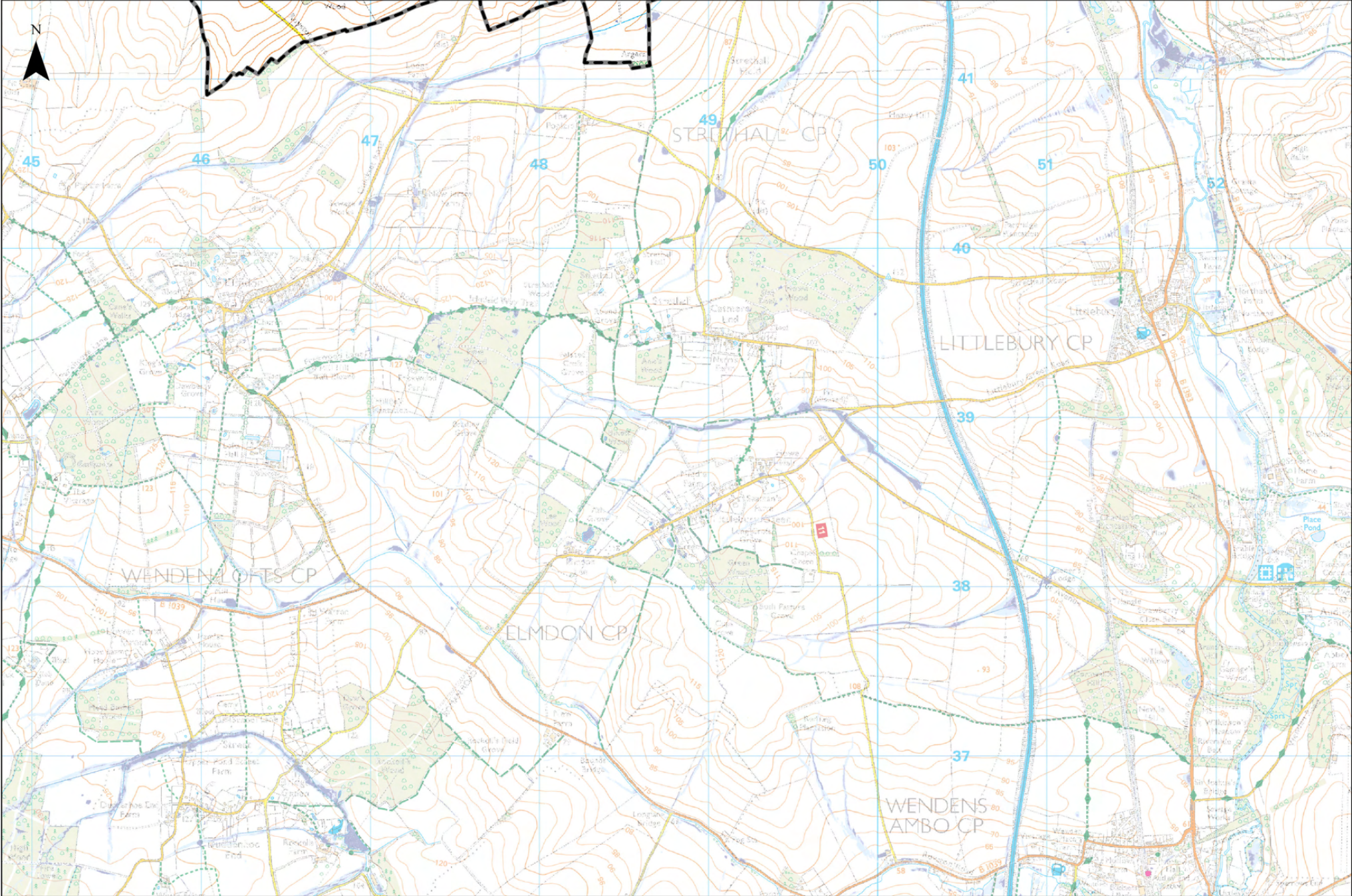
Notes

Risk of Flooding from Surface Water (RoFSW) map is an assessment of where surface water flooding may occur when rainwater does not drain away through the normal drainage systems or soak into the ground, but lies on or flows over the ground instead. It includes information about flooding extents and depths. It is produced using national scale modelling and enhanced with compatible, locally produced modelling from lead local flood authorities (LLFAs).

RoFSW is a probabilistic product, meaning that it shows the overall risk, rather than the risk associated with a specific event or scenario. In externally published versions of this dataset, risk is displayed as one of three likelihood bandings:

High - greater than or equal to 3.3% chance in any given year (1 in 30)
Medium - less than 3.3% (1 in 30) but greater than or equal to 1% (1 in 100) chance in any given year
Low - less than 1% (1 in 100) chance in any given year

These outputs are advised to not be used at the property level, at scales more detailed than 1:50,000 as the data is open to misinterpretation; due to how they are produced, these extents are not appropriate to act as the sole evidence for any specific planning or regulatory decision or assessment of risk in relation to flooding at any scale without further supporting studies or evidence.



Legend

- Cambridge City Boundary
- South Cambridgeshire Boundary
- Surface Water Flood Extent
 - 3.3% (1 in 30) AEP Event
 - 1% (1 in 100) AEP Event
 - 0.1% (1 in 1000) AEP Event

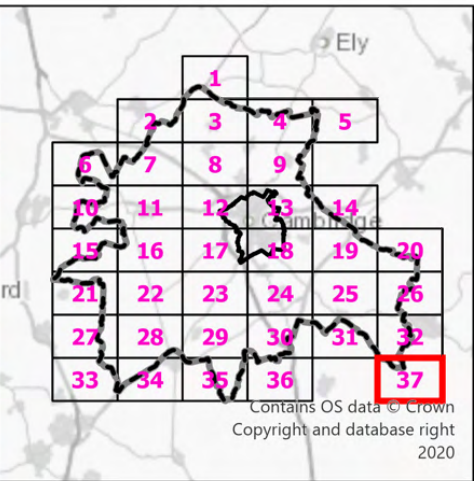
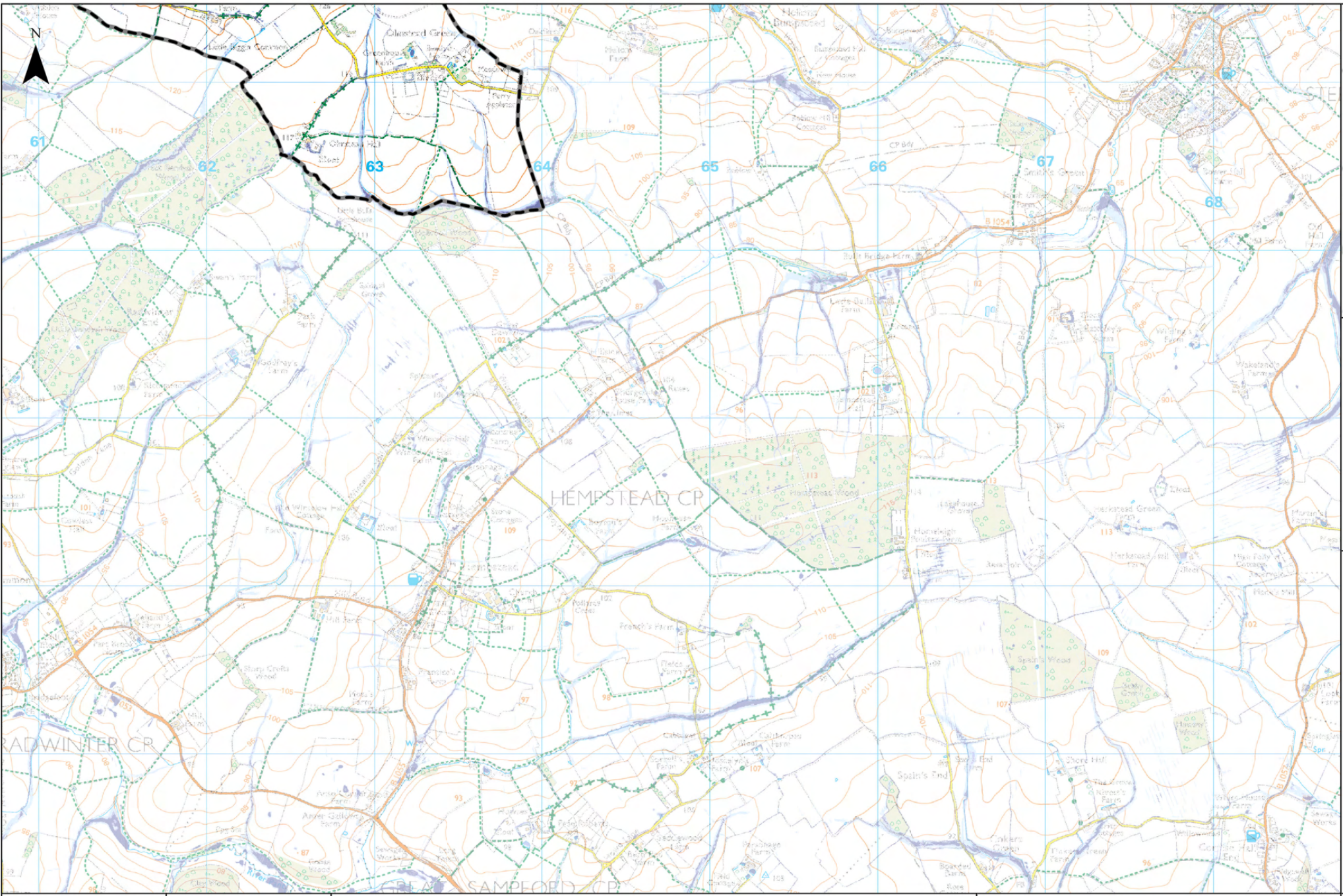
Notes

Risk of Flooding from Surface Water (RoFSW) map is an assessment of where surface water flooding may occur when rainwater does not drain away through the normal drainage systems or soak into the ground, but lies on or flows over the ground instead. It includes information about flooding extents and depths. It is produced using national scale modelling and enhanced with compatible, locally produced modelling from lead local flood authorities (LLFAs).

RoFSW is a probabilistic product, meaning that it shows the overall risk, rather than the risk associated with a specific event or scenario. In externally published versions of this dataset, risk is displayed as one of three likelihood bandings:

- High - greater than or equal to 3.3% chance in any given year (1 in 30)
- Medium - less than 3.3% (1 in 30) but greater than or equal to 1% (1 in 100) chance in any given year
- Low - less than 1% (1 in 100) chance in any given year

These outputs are advised to not be used at the property level, at scales more detailed than 1:50,000 as the data is open to misinterpretation; due to how they are produced, these extents are not appropriate to act as the sole evidence for any specific planning or regulatory decision or assessment of risk in relation to flooding at any scale without further supporting studies or evidence.



Contains OS data © Crown Copyright and database right 2020

Legend

- Cambridge City Boundary
- South Cambridgeshire Boundary

Surface Water Flood Extent

- 3.3% (1 in 30) AEP Event
- 1% (1 in 100) AEP Event
- 0.1% (1 in 1000) AEP Event

Notes

Risk of Flooding from Surface Water (RoFSW) map is an assessment of where surface water flooding may occur when rainwater does not drain away through the normal drainage systems or soak into the ground, but lies on or flows over the ground instead. It includes information about flooding extents and depths. It is produced using national scale modelling and enhanced with compatible, locally produced modelling from lead local flood authorities (LLFAs).

RoFSW is a probabilistic product, meaning that it shows the overall risk, rather than the risk associated with a specific event or scenario. In externally published versions of this dataset, risk is displayed as one of three likelihood bandings:

- High - greater than or equal to 3.3% chance in any given year (1 in 30)
- Medium - less than 3.3% (1 in 30) but greater than or equal to 1% (1 in 100) chance in any given year
- Low - less than 1% (1 in 100) chance in any given year

These outputs are advised to not be used at the property level, at scales more detailed than 1:50,000 as the data is open to misinterpretation; due to how they are produced, these extents are not appropriate to act as the sole evidence for any specific planning or regulatory decision or assessment of risk in relation to flooding at any scale without further supporting studies or evidence.