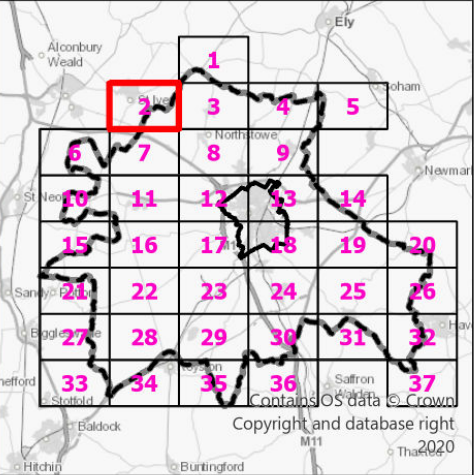
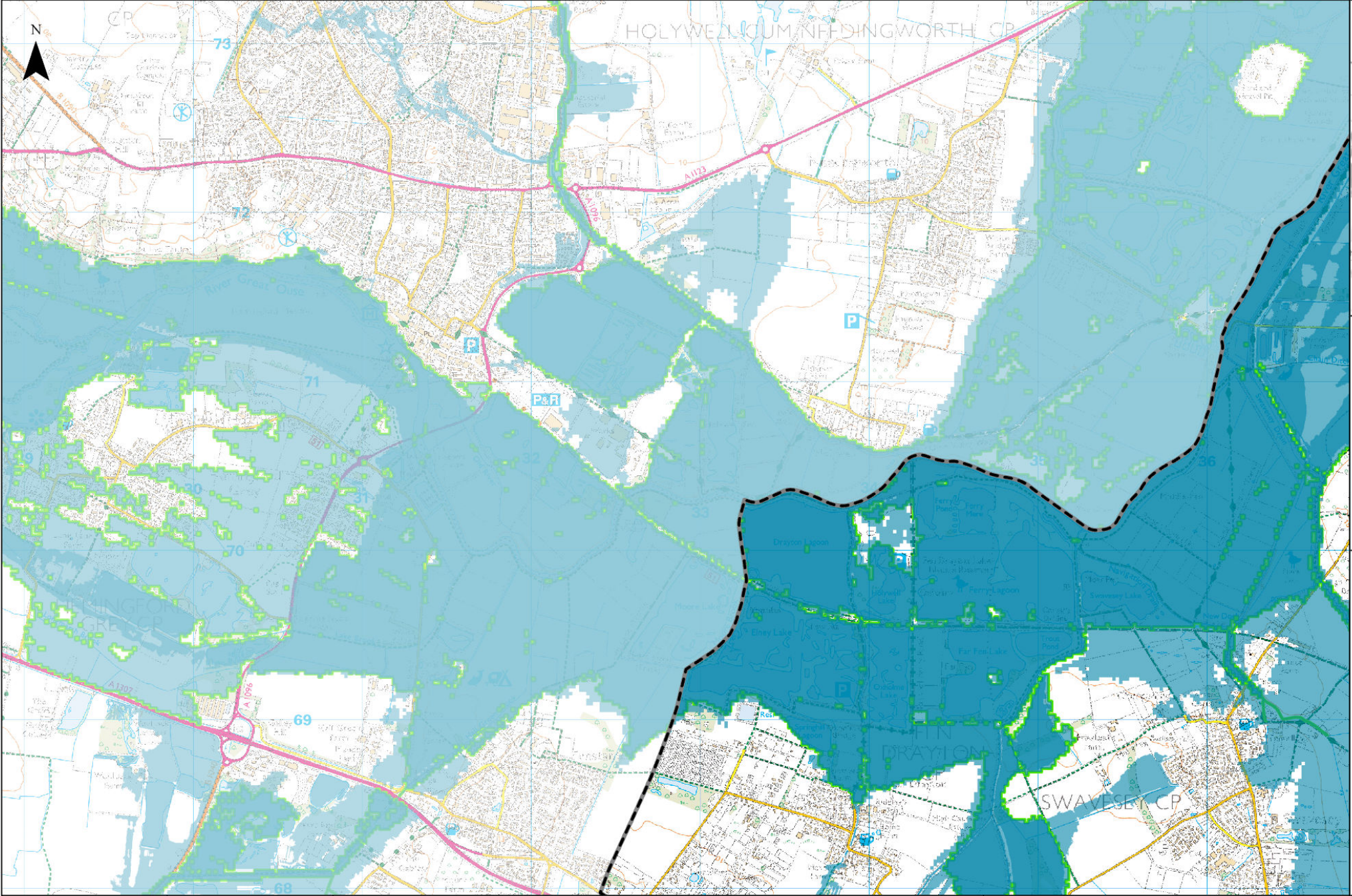


Legend

- Cambridge City Boundary
- South Cambridgeshire Boundary
- Functional Floodplain
- Cam Urban Model 2023
- Cam Rural 2014
- Cam Broadscale 2023
- Lower Ouse Model 2015
- Coldhams Brook Model 2013

Notes

The indicative functional floodplain is defined as land where water has to flow or be stored in times of flood. The map uses the 1 in 30 year flood risk from surface water extent was used. Models included are the Cam Urban (2023), Cam Rural (2014), Coldhams Brook (2013), Cam Broadscale (2023) and Lower Ouse (2015). Moreover, areas intended to flood, for example upstream flood storage areas designed to protect communities further downstream, classed as flood storage areas are identified as functional floodplains to safeguard them from development as suggested by the guidance.

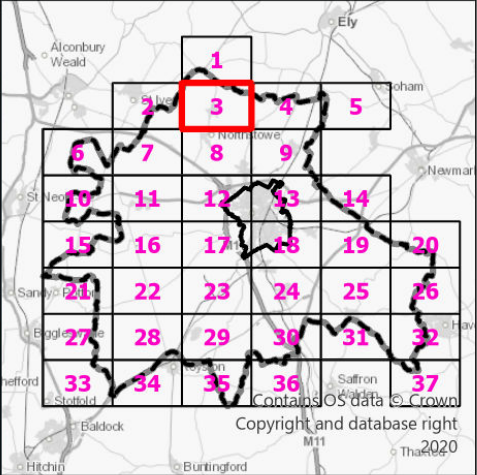
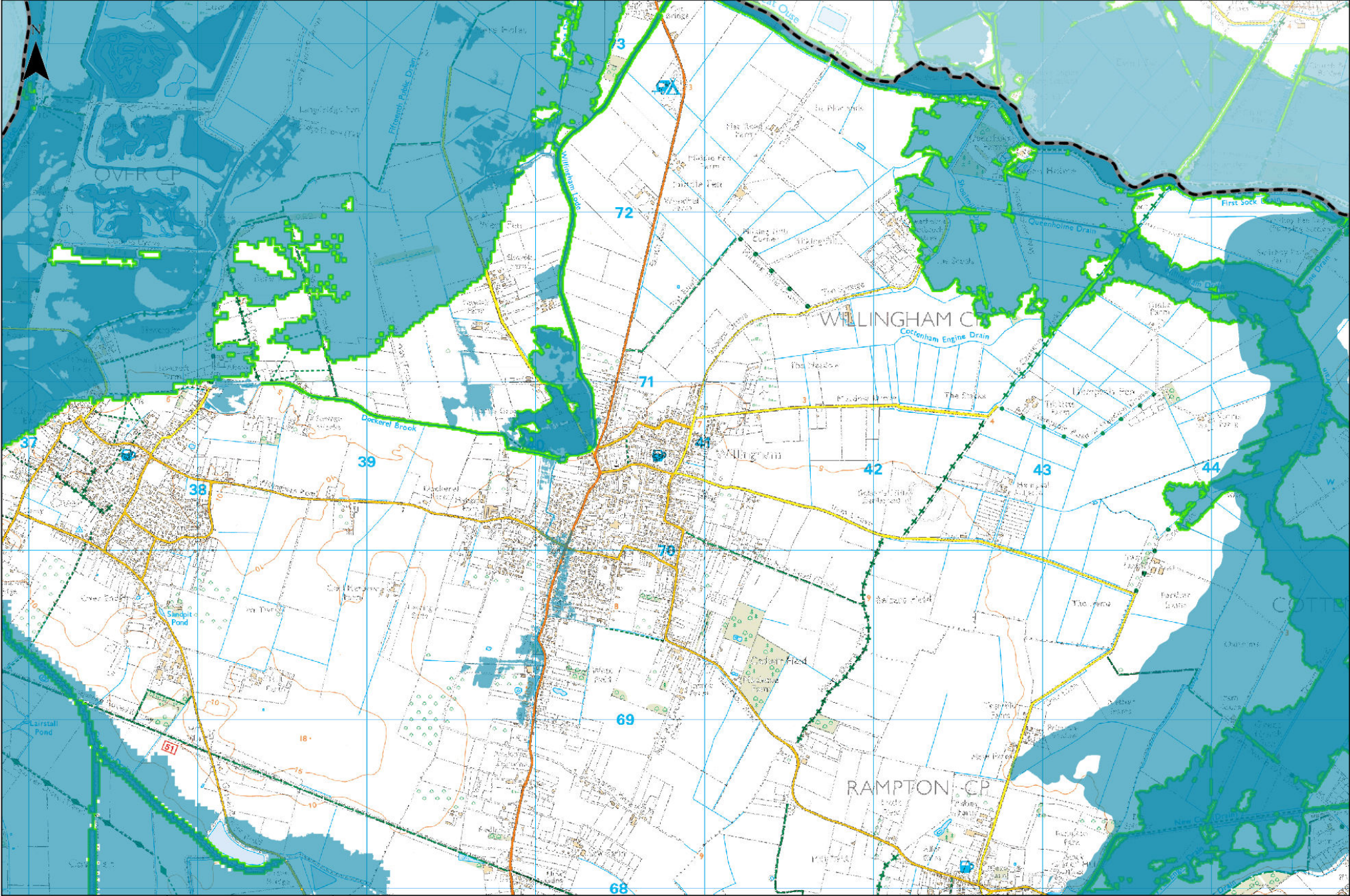


Legend

- Cambridge City Boundary
- South Cambridgeshire Boundary
- Functional Floodplain
- Cam Urban Model 2023
- Cam Rural 2014
- Cam Broadscale 2023
- Lower Ouse Model 2015
- Coldhams Brook Model 2013

Notes

The indicative functional floodplain is defined as land where water has to flow or be stored in times of flood. The map uses the 1 in 30 year flood risk from surface water extent was used. Models included are the Cam Urban (2023), Cam Rural (2014), Coldhams Brook (2013), Cam Broadscale (2023) and Lower Ouse (2015). Moreover, areas intended to flood, for example upstream flood storage areas designed to protect communities further downstream, classed as flood storage areas are identified as functional floodplains to safeguard them from development as suggested by the guidance.

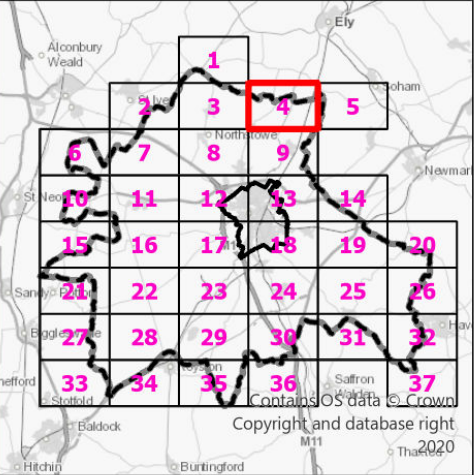
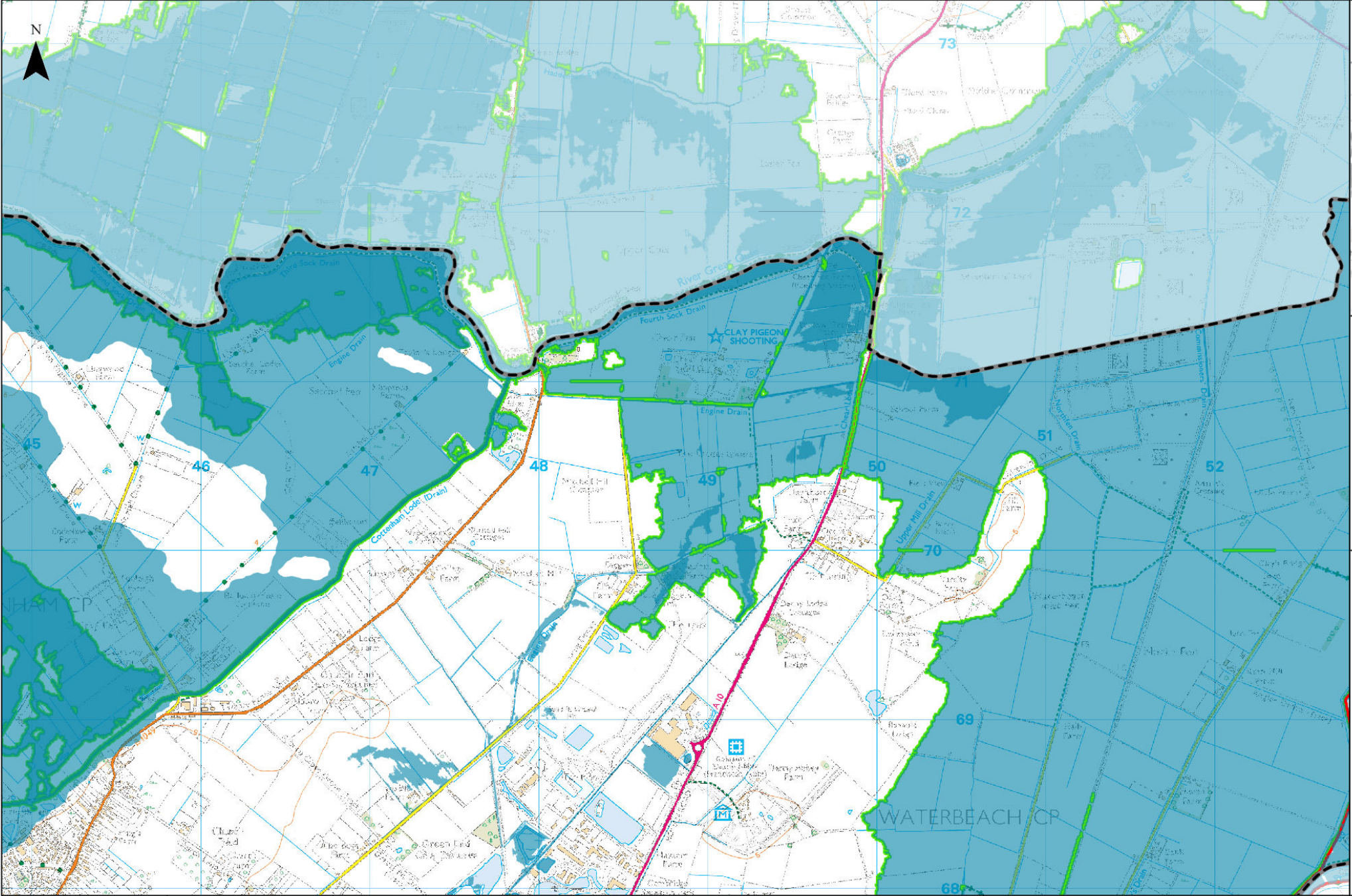


Legend

- Cambridge City Boundary
- South Cambridgeshire Boundary
- Functional Floodplain
- Cam Urban Model 2023
- Cam Rural 2014
- Cam Broadscale 2023
- Lower Ouse Model 2015
- Coldhams Brook Model 2013

Notes

The indicative functional floodplain is defined as land where water has to flow or be stored in times of flood. The map uses the 1 in 30 year flood risk from surface water extent was used. Models included are the Cam Urban (2023), Cam Rural (2014), Coldhams Brook (2013), Cam Broadscale (2023) and Lower Ouse (2015). Moreover, areas intended to flood, for example upstream flood storage areas designed to protect communities further downstream, classed as flood storage areas are identified as functional floodplains to safeguard them from development as suggested by the guidance.

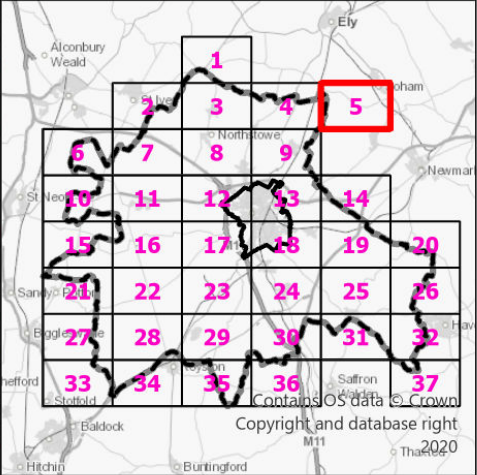
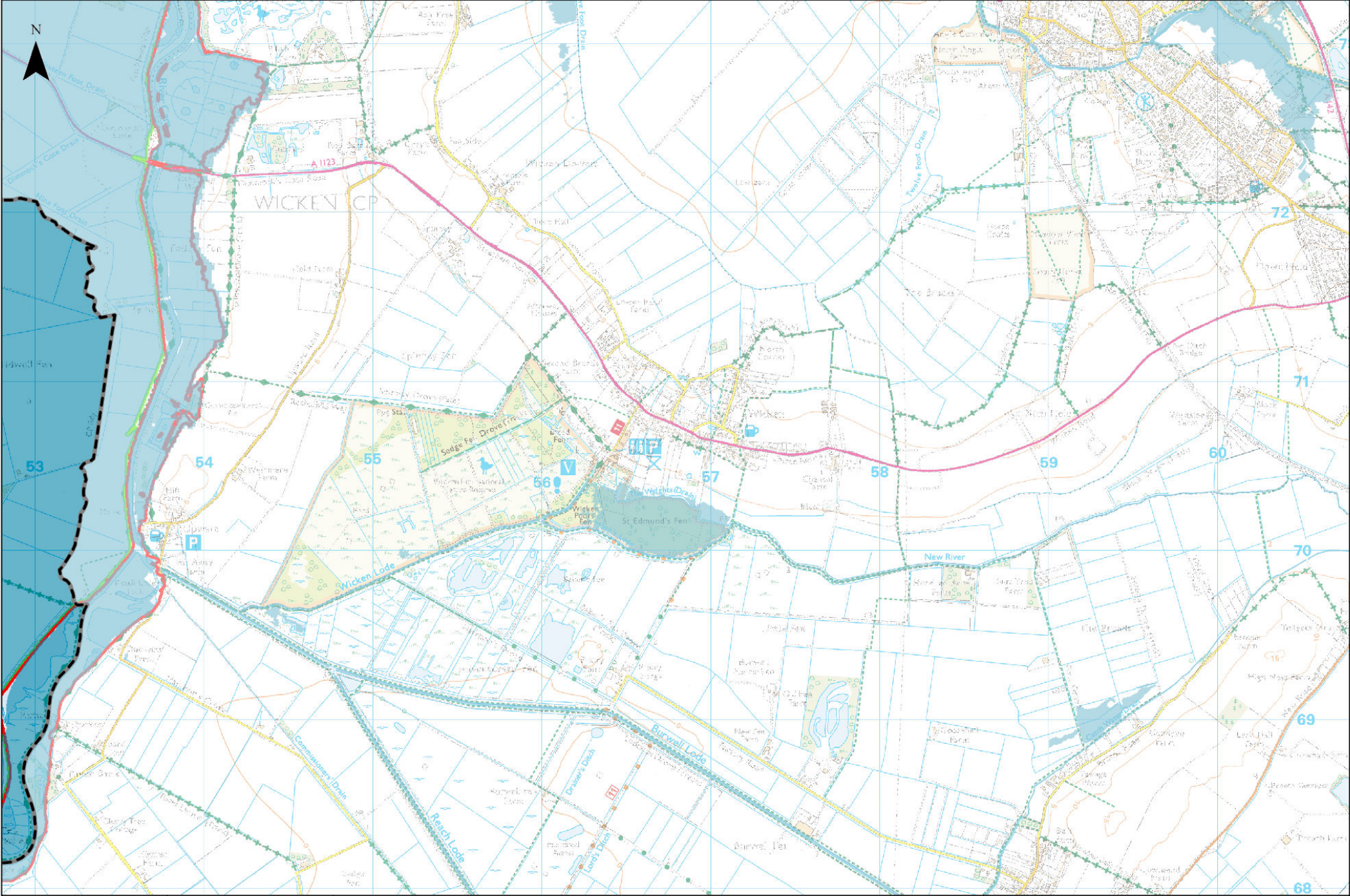


Legend

- Cambridge City Boundary
- South Cambridgeshire Boundary
- Functional Floodplain
- Cam Urban Model 2023
- Cam Rural 2014
- Cam Broadscale 2023
- Lower Ouse Model 2015
- Coldhams Brook Model 2013

Notes

The indicative functional floodplain is defined as land where water has to flow or be stored in times of flood. The map uses the 1 in 30 year flood risk from surface water extent was used. Models included are the Cam Urban (2023), Cam Rural (2014), Coldhams Brook (2013), Cam Broadscale (2023) and Lower Ouse (2015). Moreover, areas intended to flood, for example upstream flood storage areas designed to protect communities further downstream, classed as flood storage areas are identified as functional floodplains to safeguard them from development as suggested by the guidance.

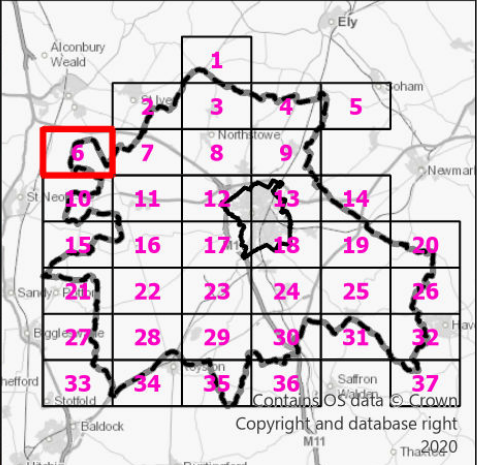
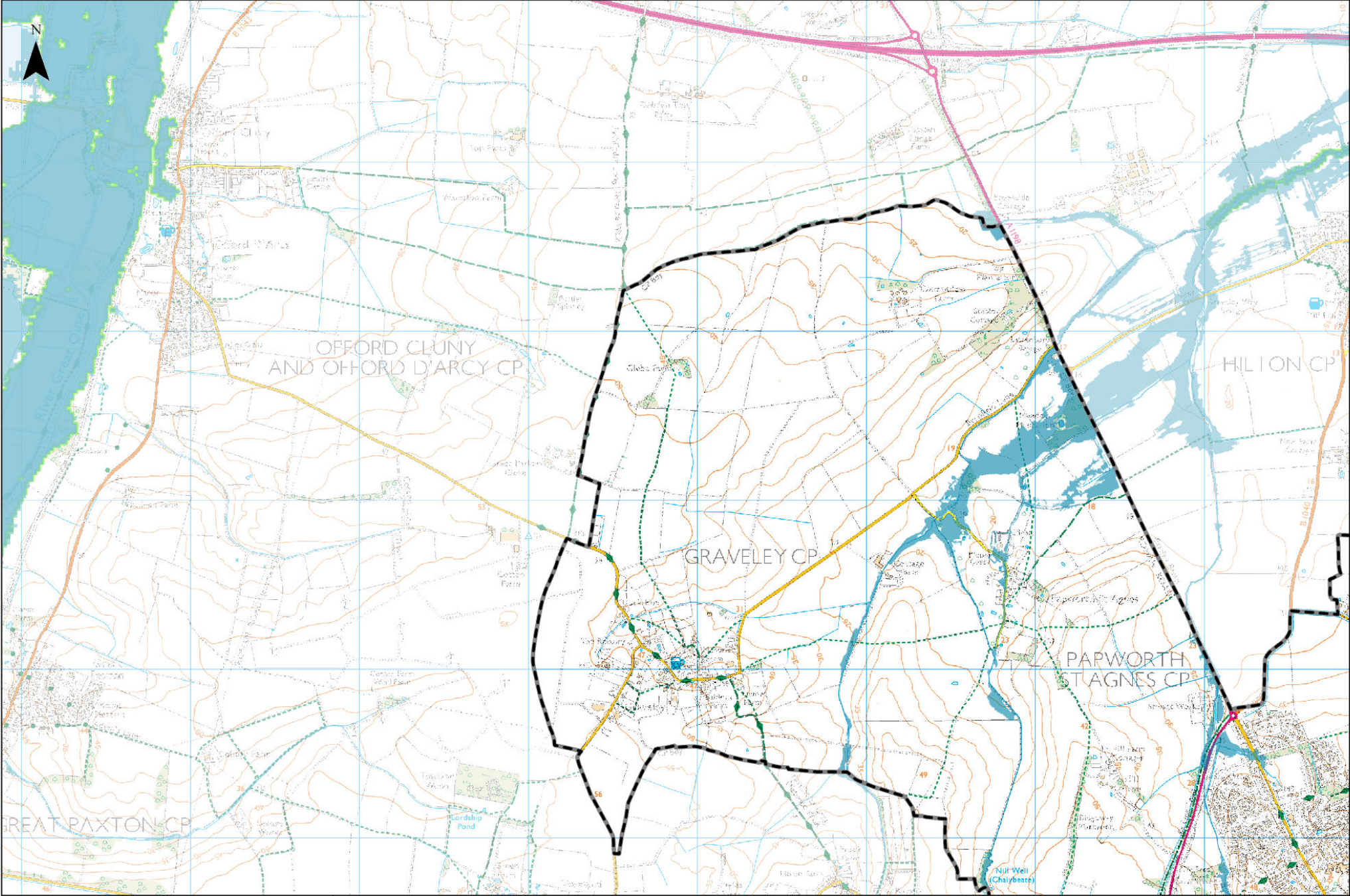


Legend

- Cambridge City Boundary
- South Cambridgeshire Boundary
- Functional Floodplain
- Cam Urban Model 2023
- Cam Rural 2014
- Cam Broadscale 2023
- Lower Ouse Model 2015
- Coldhams Brook Model 2013

Notes

The indicative functional floodplain is defined as land where water has to flow or be stored in times of flood. The map uses the 1 in 30 year flood risk from surface water extent was used. Models included are the Cam Urban (2023), Cam Rural (2014), Coldhams Brook (2013), Cam Broadscale (2023) and Lower Ouse (2015). Moreover, areas intended to flood, for example upstream flood storage areas designed to protect communities further downstream, classed as flood storage areas are identified as functional floodplains to safeguard them from development as suggested by the guidance.

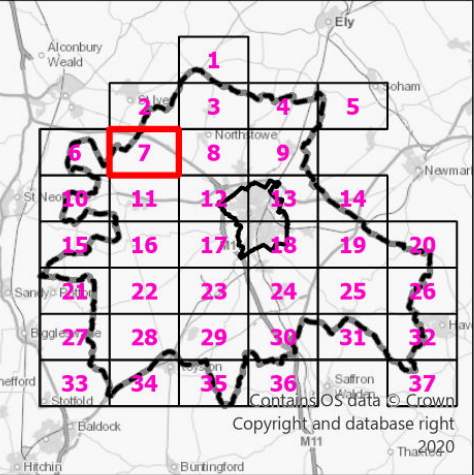
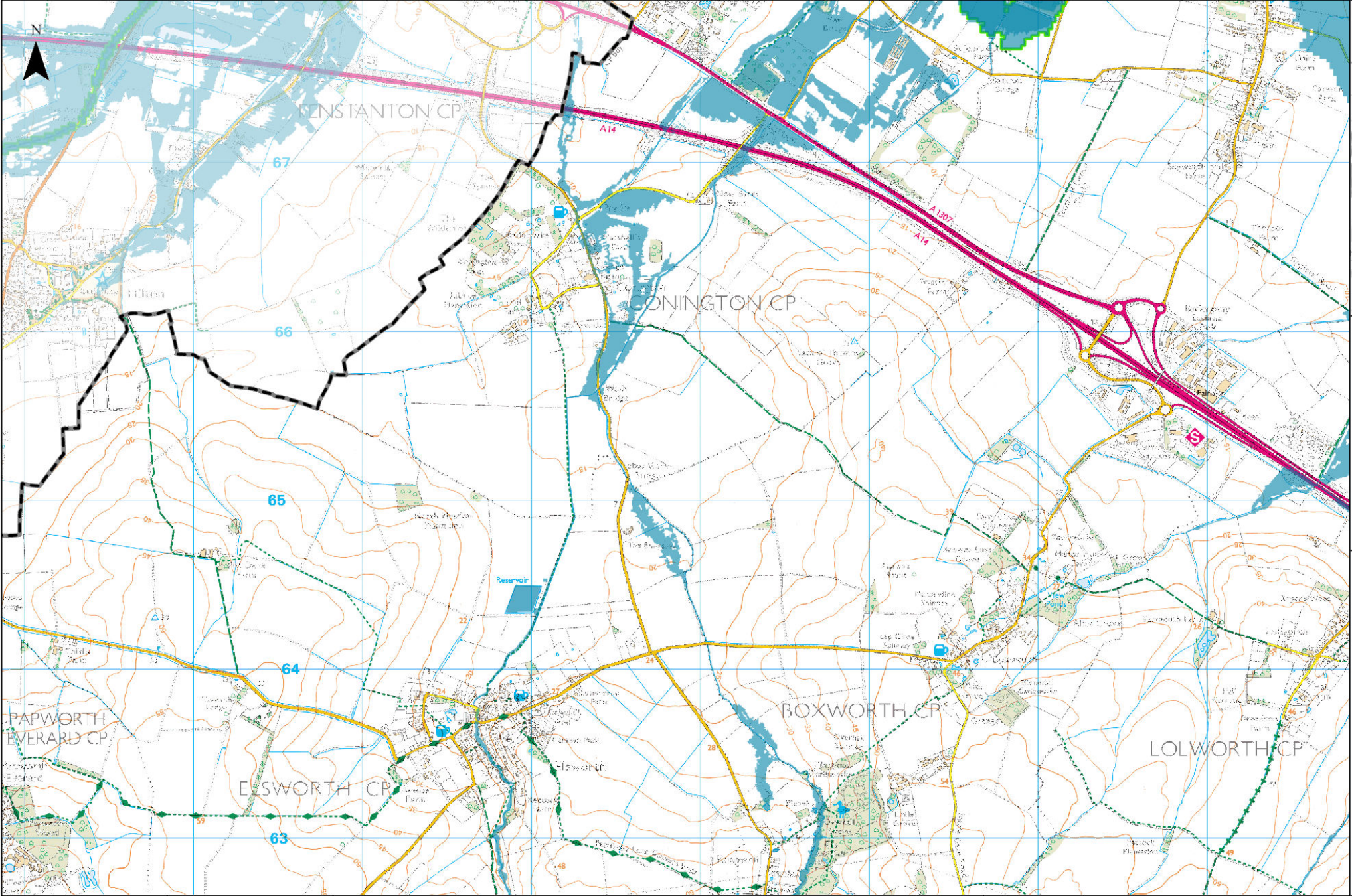


Legend

- Cambridge City Boundary
- South Cambridgeshire Boundary
- Functional Floodplain
- Cam Urban Model 2023
- Cam Rural 2014
- Cam Broadscale 2023
- Lower Ouse Model 2015
- Coldhams Brook Model 2013

Notes

The indicative functional floodplain is defined as land where water has to flow or be stored in times of flood. The map uses the 1 in 30 year flood risk from surface water extent was used. Models included are the Cam Urban (2023), Cam Rural (2014), Coldhams Brook (2013), Cam Broadscale (2023) and Lower Ouse (2015). Moreover, areas intended to flood, for example upstream flood storage areas designed to protect communities further downstream, classed as flood storage areas are identified as functional floodplains to safeguard them from development as suggested by the guidance.

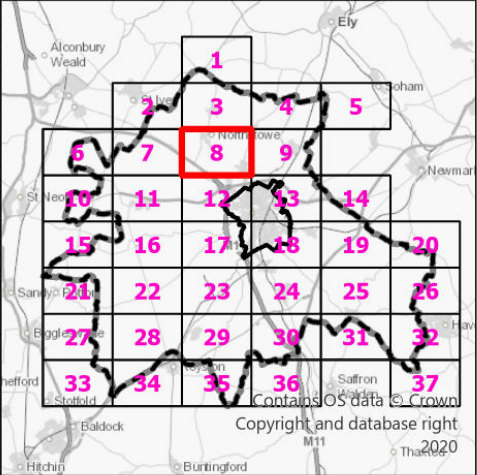
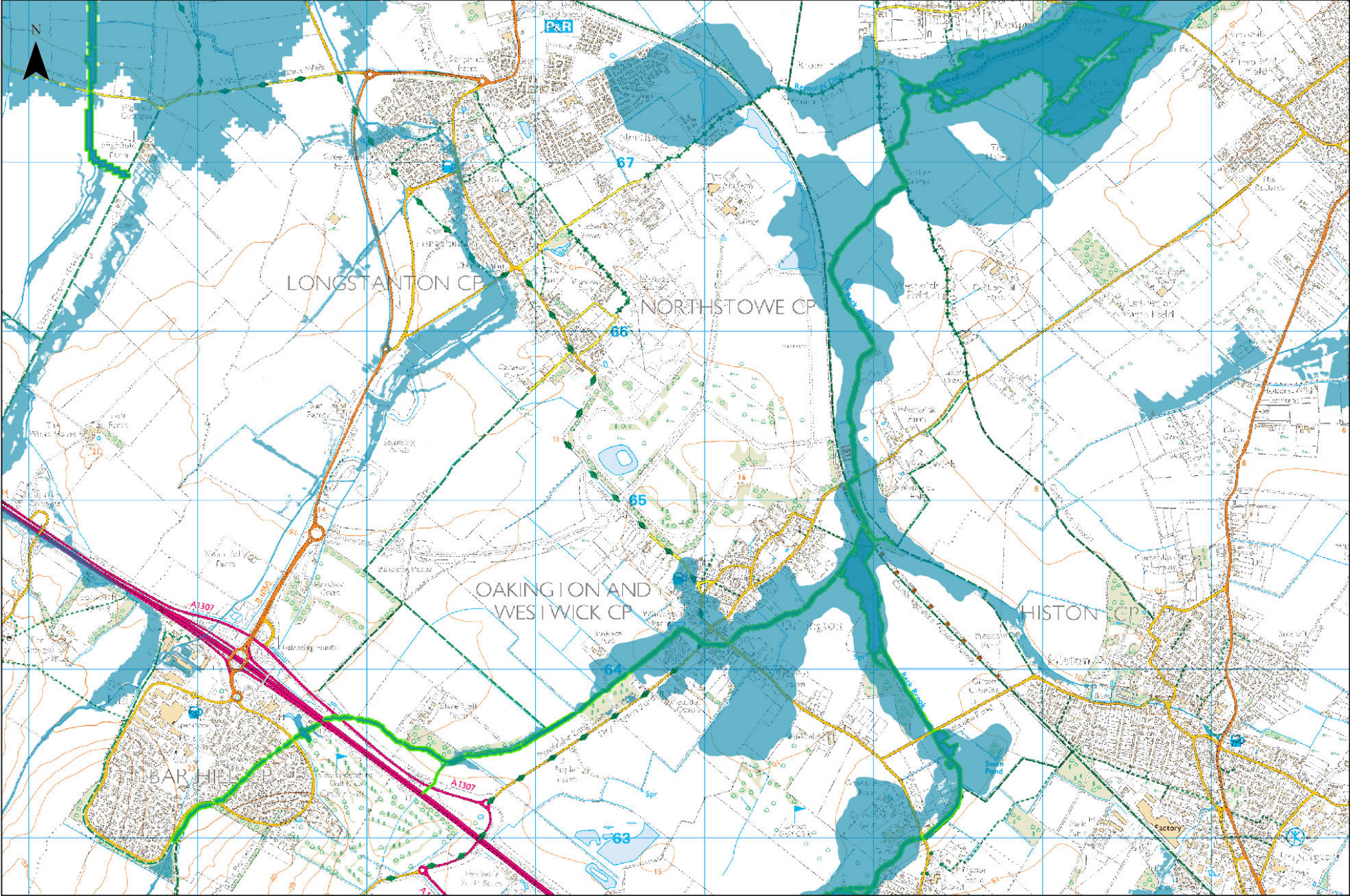


Legend

- Cambridge City Boundary
- South Cambridgeshire Boundary
- Functional Floodplain
- Cam Urban Model 2023
- Cam Rural 2014
- Cam Broadscale 2023
- Lower Ouse Model 2015
- Coldhams Brook Model 2013

Notes

The indicative functional floodplain is defined as land where water has to flow or be stored in times of flood. The map uses the 1 in 30 year flood risk from surface water extent was used. Models included are the Cam Urban (2023), Cam Rural (2014), Coldhams Brook (2013), Cam Broadscale (2023) and Lower Ouse (2015). Moreover, areas intended to flood, for example upstream flood storage areas designed to protect communities further downstream, classed as flood storage areas are identified as functional floodplains to safeguard them from development as suggested by the guidance.

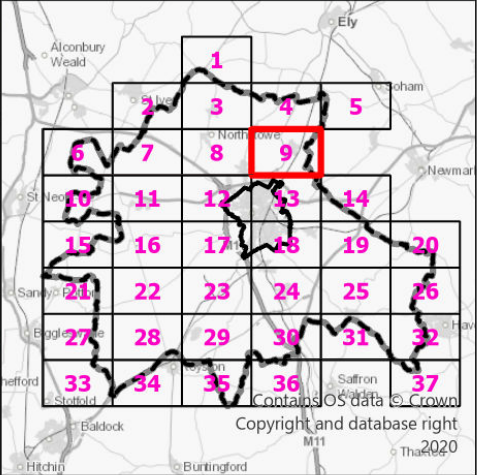
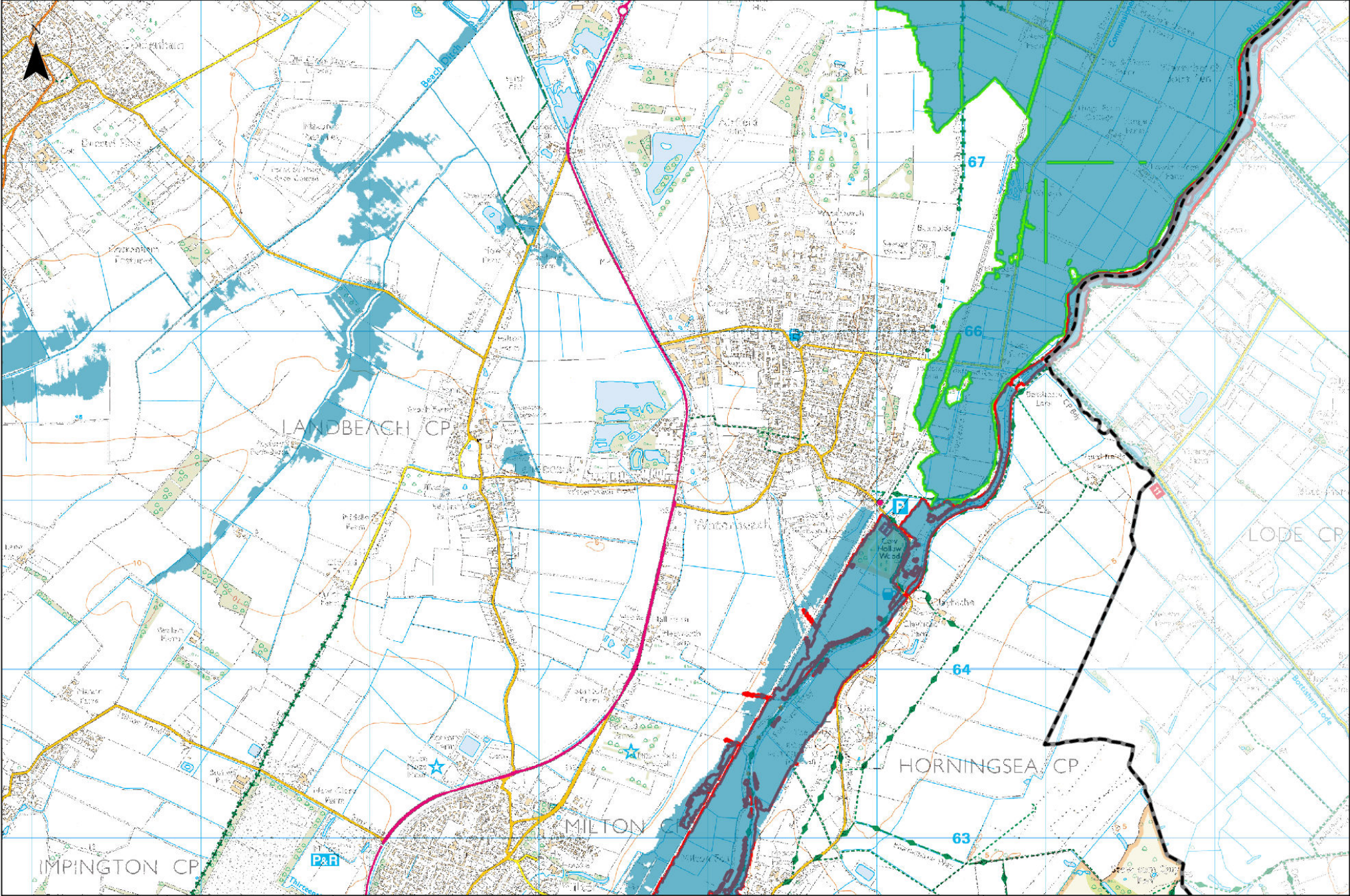


Legend

- Cambridge City Boundary
- South Cambridgeshire Boundary
- Functional Floodplain
- Cam Urban Model 2023
- Cam Rural 2014
- Cam Broadscale 2023
- Lower Ouse Model 2015
- Coldhams Brook Model 2013

Notes

The indicative functional floodplain is defined as land where water has to flow or be stored in times of flood. The map uses the 1 in 30 year flood risk from surface water extent was used. Models included are the Cam Urban (2023), Cam Rural (2014), Coldhams Brook (2013), Cam Broadscale (2023) and Lower Ouse (2015). Moreover, areas intended to flood, for example upstream flood storage areas designed to protect communities further downstream, classed as flood storage areas are identified as functional floodplains to safeguard them from development as suggested by the guidance.

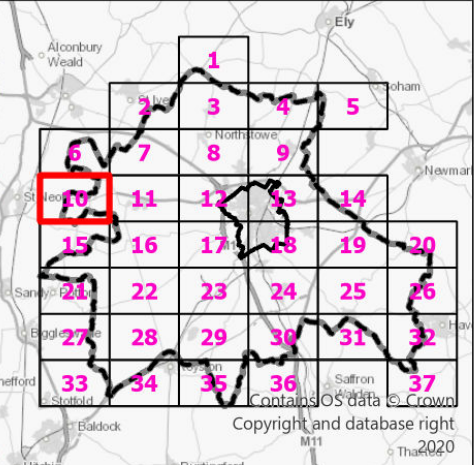
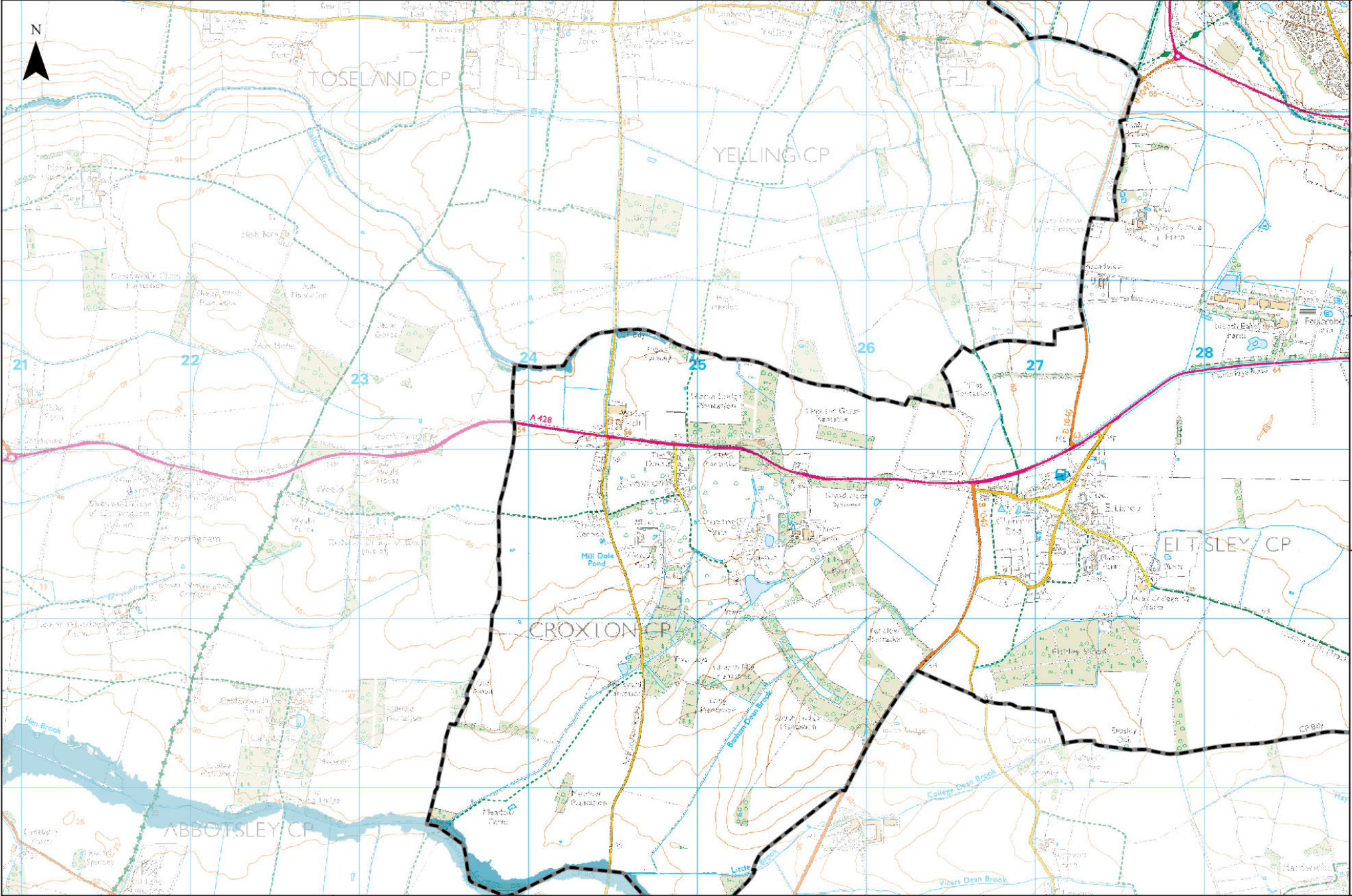


Legend

- Cambridge City Boundary
- South Cambridgeshire Boundary
- Functional Floodplain
- Cam Urban Model 2023
- Cam Rural 2014
- Cam Broadscale 2023
- Lower Ouse Model 2015
- Coldhams Brook Model 2013

Notes

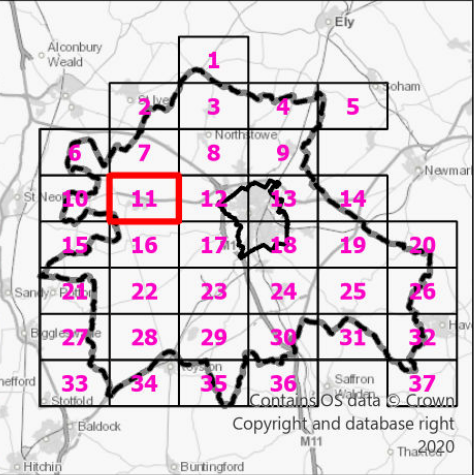
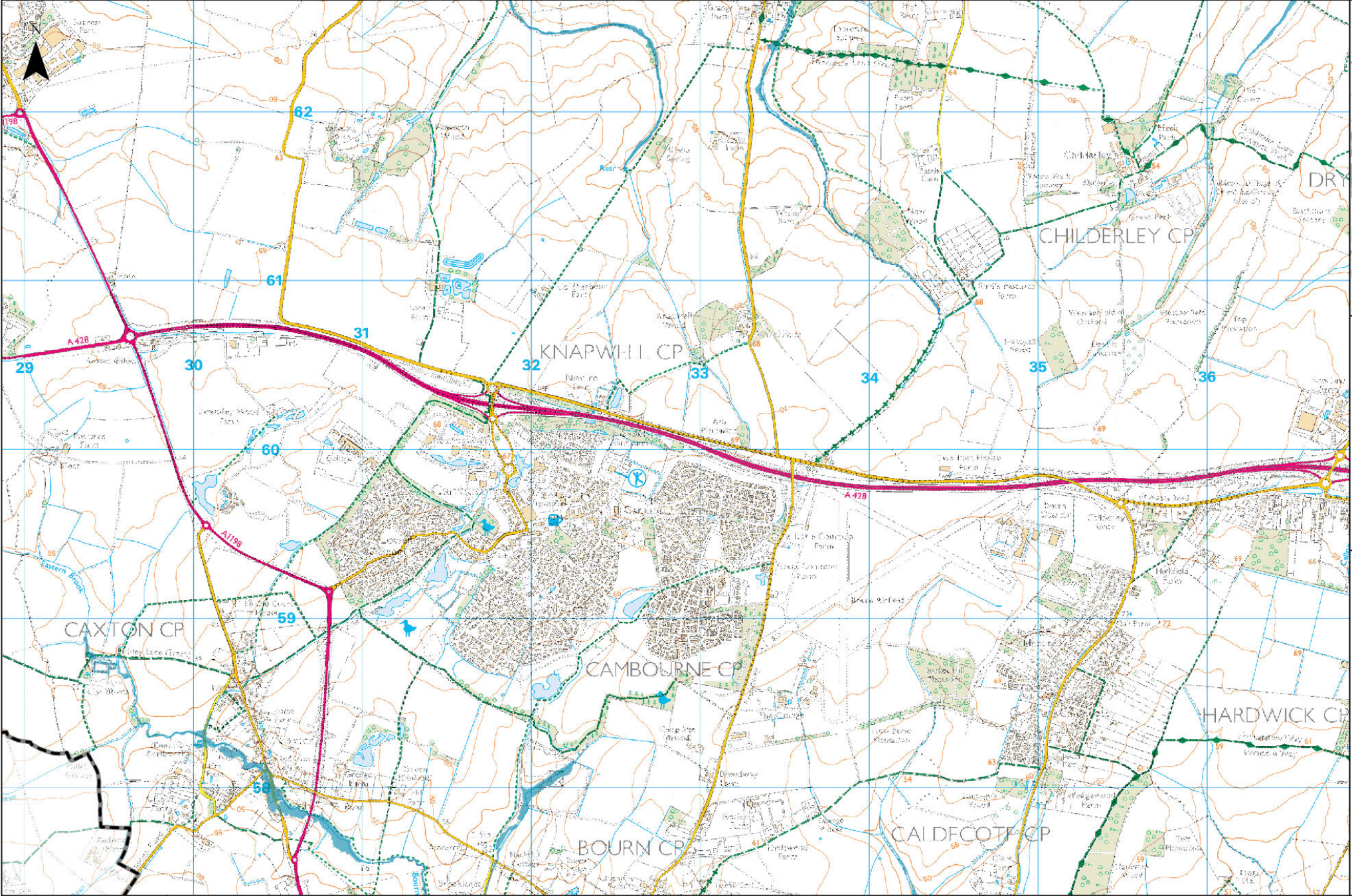
The indicative functional floodplain is defined as land where water has to flow or be stored in times of flood. The map uses the 1 in 30 year flood risk from surface water extent was used. Models included are the Cam Urban (2023), Cam Rural (2014), Coldhams Brook (2013), Cam Broadscale (2023) and Lower Ouse (2015). Moreover, areas intended to flood, for example upstream flood storage areas designed to protect communities further downstream, classed as flood storage areas are identified as functional floodplains to safeguard them from development as suggested by the guidance.



- Legend**
- Cambridge City Boundary
 - South Cambridgeshire Boundary
 - Cam Urban Model 2023
 - Cam Rural 2014
 - Cam Broadscale 2023
 - Lower Ouse Model 2015
 - Coldhams Brook Model 2013

Notes

The indicative functional floodplain is defined as land where water has to flow or be stored in times of flood. The map uses the 1 in 30 year flood risk from surface water extent was used. Models included are the Cam Urban (2023), Cam Rural (2014), Coldhams Brook (2013), Cam Broadscale (2023) and Lower Ouse (2015). Moreover, areas intended to flood, for example upstream flood storage areas designed to protect communities further downstream, classed as flood storage areas are identified as functional floodplains to safeguard them from development as suggested by the guidance.

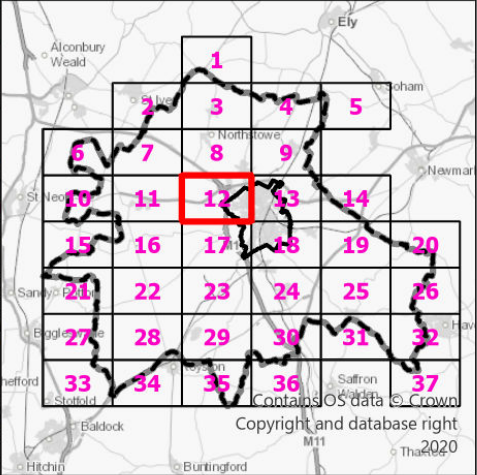
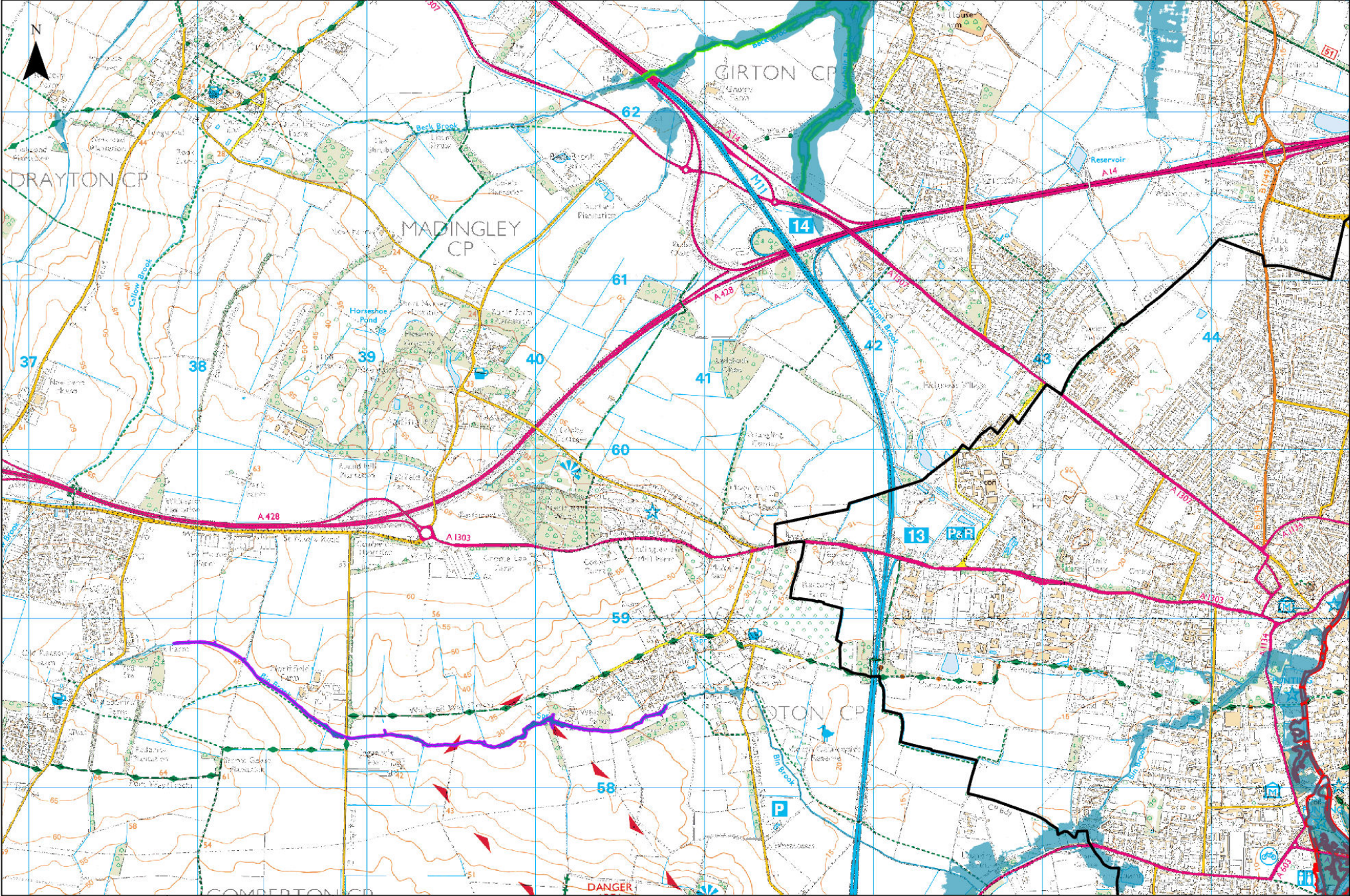


Legend

- Cambridge City Boundary
- South Cambridgeshire Boundary
- Cam Urban Model 2023
- Cam Rural 2014
- Cam Broadscale 2023
- Lower Ouse Model 2015
- Coldhams Brook Model 2013

Notes

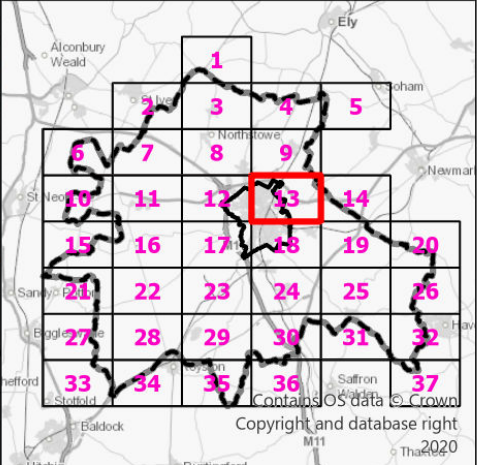
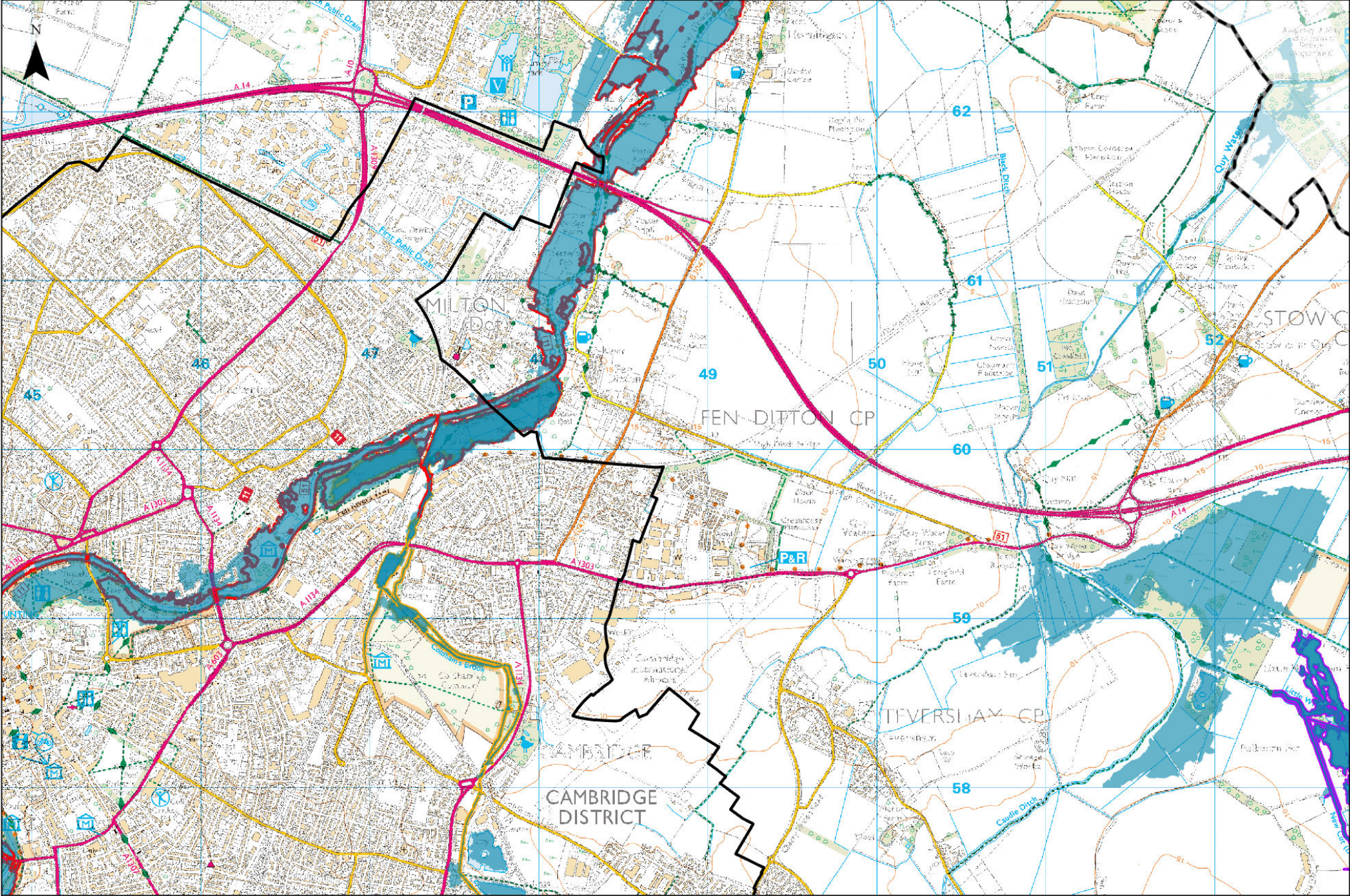
The indicative functional floodplain is defined as land where water has to flow or be stored in times of flood. The map uses the 1 in 30 year flood risk from surface water extent was used. Models included are the Cam Urban (2023), Cam Rural (2014), Coldhams Brook (2013), Cam Broadscale (2023) and Lower Ouse (2015). Moreover, areas intended to flood, for example upstream flood storage areas designed to protect communities further downstream, classed as flood storage areas are identified as functional floodplains to safeguard them from development as suggested by the guidance.



- Legend**
- Cambridge City Boundary
 - South Cambridgeshire Boundary
 - Functional Floodplain
 - Cam Urban Model 2023
 - Cam Rural 2014
 - Cam Broadscale 2023
 - Lower Ouse Model 2015
 - Coldhams Brook Model 2013

Notes

The indicative functional floodplain is defined as land where water has to flow or be stored in times of flood. The map uses the 1 in 30 year flood risk from surface water extent was used. Models included are the Cam Urban (2023), Cam Rural (2014), Coldhams Brook (2013), Cam Broadscale (2023) and Lower Ouse (2015). Moreover, areas intended to flood, for example upstream flood storage areas designed to protect communities further downstream, classed as flood storage areas are identified as functional floodplains to safeguard them from development as suggested by the guidance.

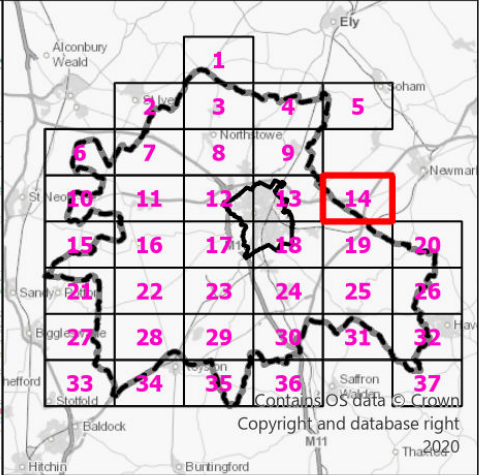
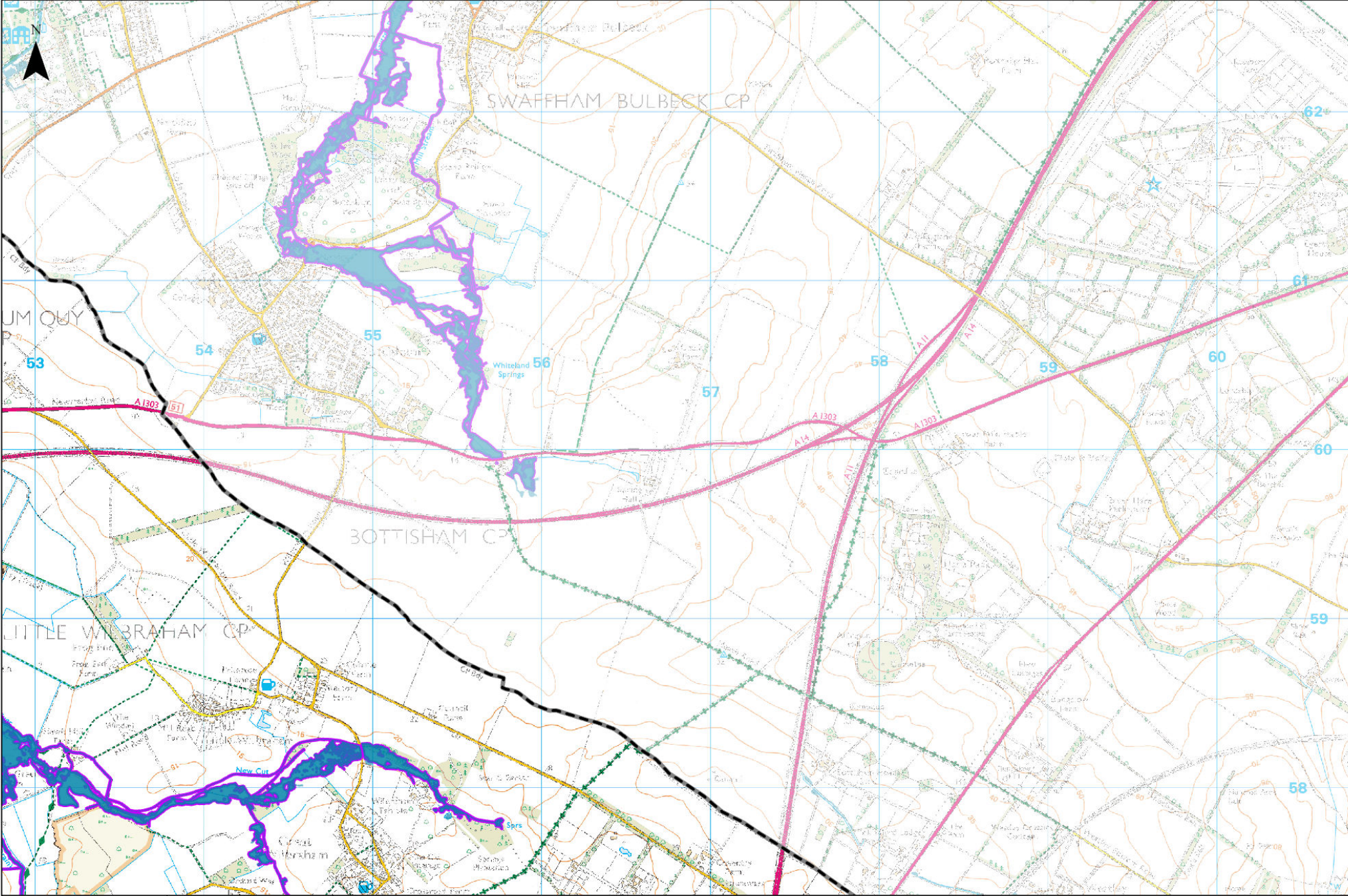


Legend

- Cambridge City Boundary
- South Cambridgeshire Boundary
- Functional Floodplain
- Cam Urban Model 2023
- Cam Rural 2014
- Cam Broadscale 2023
- Lower Ouse Model 2015
- Coldhams Brook Model 2013

Notes

The indicative functional floodplain is defined as land where water has to flow or be stored in times of flood. The map uses the 1 in 30 year flood risk from surface water extent was used. Models included are the Cam Urban (2023), Cam Rural (2014), Coldhams Brook (2013), Cam Broadscale (2023) and Lower Ouse (2015). Moreover, areas intended to flood, for example upstream flood storage areas designed to protect communities further downstream, classed as flood storage areas are identified as functional floodplains to safeguard them from development as suggested by the guidance.

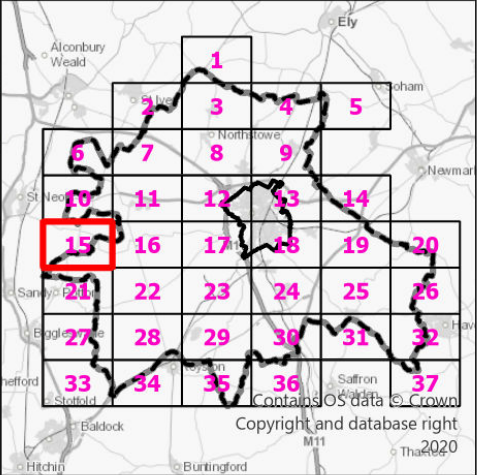
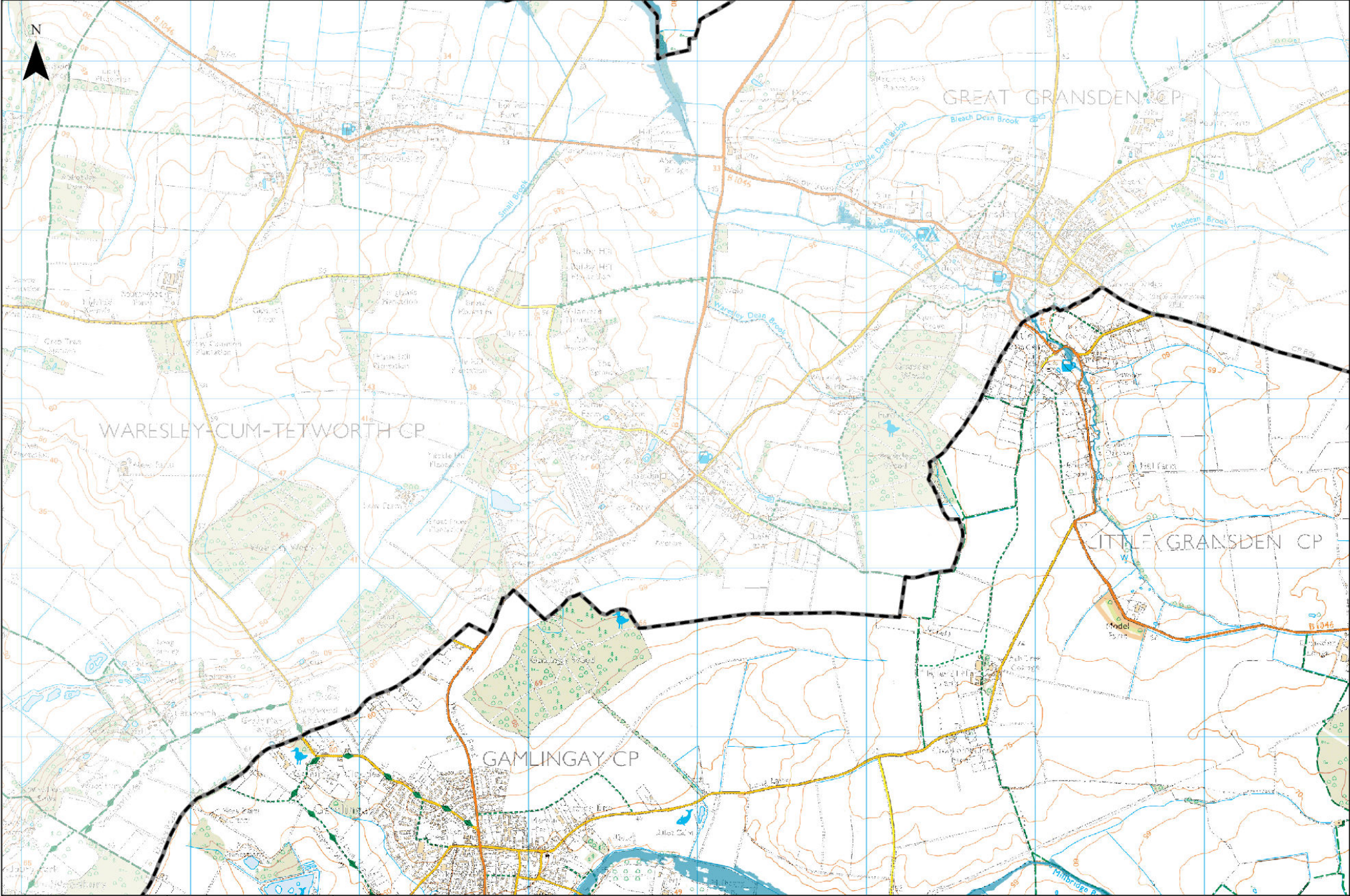


Legend

- Cambridge City Boundary
- South Cambridgeshire Boundary
- Functional Floodplain
- Cam Urban Model 2023
- Cam Rural 2014
- Cam Broadscale 2023
- Lower Ouse Model 2015
- Coldhams Brook Model 2013

Notes

The indicative functional floodplain is defined as land where water has to flow or be stored in times of flood. The map uses the 1 in 30 year flood risk from surface water extent was used. Models included are the Cam Urban (2023), Cam Rural (2014), Coldhams Brook (2013), Cam Broadscale (2023) and Lower Ouse (2015). Moreover, areas intended to flood, for example upstream flood storage areas designed to protect communities further downstream, classed as flood storage areas are identified as functional floodplains to safeguard them from development as suggested by the guidance.

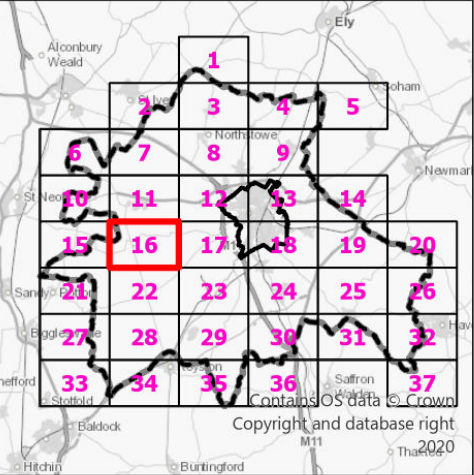
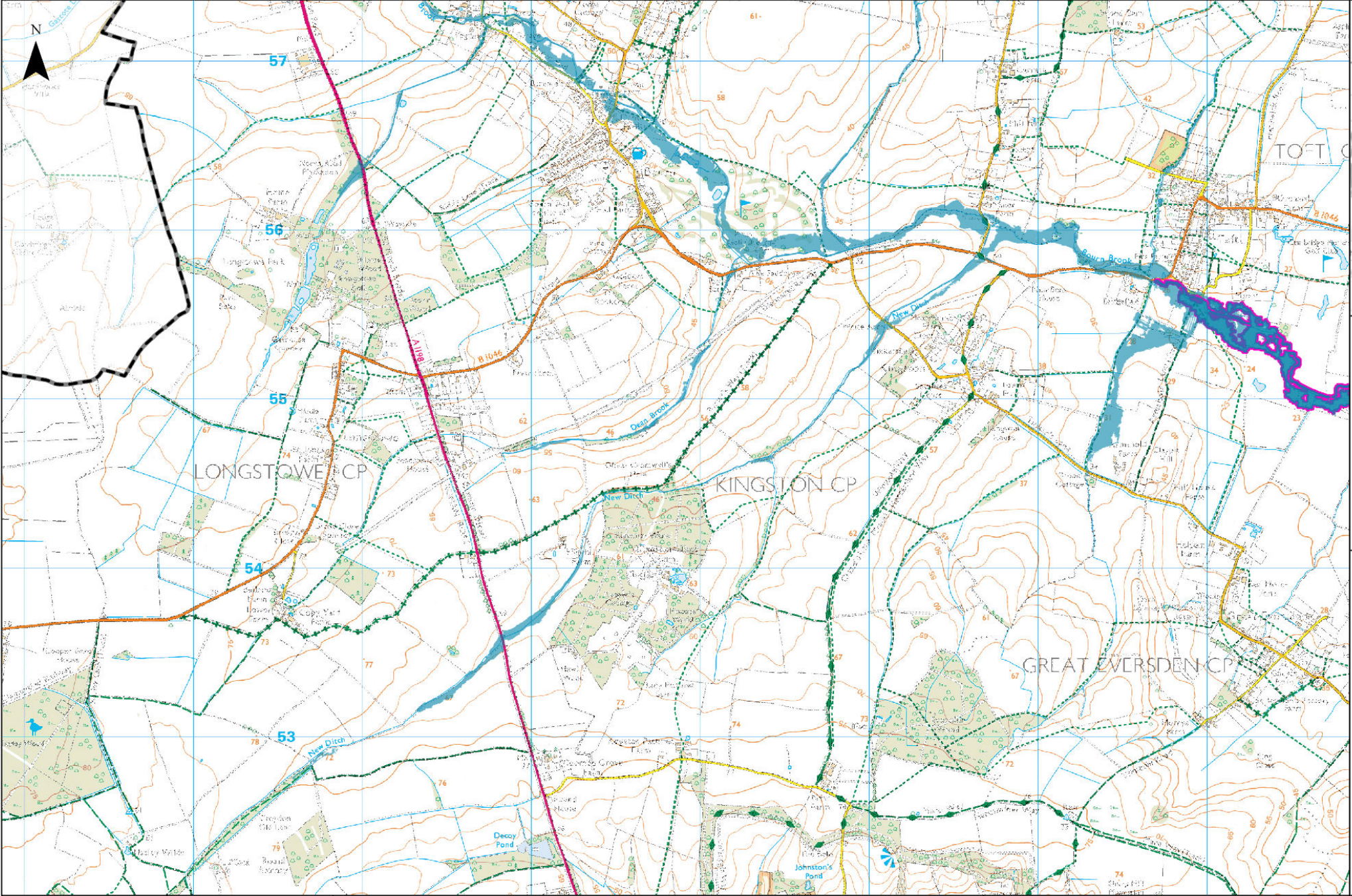


Legend

- Cambridge City Boundary
- South Cambridgeshire Boundary
- Cam Urban Model 2023
- Cam Rural 2014
- Cam Broadscale 2023
- Lower Ouse Model 2015
- Coldhams Brook Model 2013

Notes

The indicative functional floodplain is defined as land where water has to flow or be stored in times of flood. The map uses the 1 in 30 year flood risk from surface water extent was used. Models included are the Cam Urban (2023), Cam Rural (2014), Coldhams Brook (2013), Cam Broadscale (2023) and Lower Ouse (2015). Moreover, areas intended to flood, for example upstream flood storage areas designed to protect communities further downstream, classed as flood storage areas are identified as functional floodplains to safeguard them from development as suggested by the guidance.

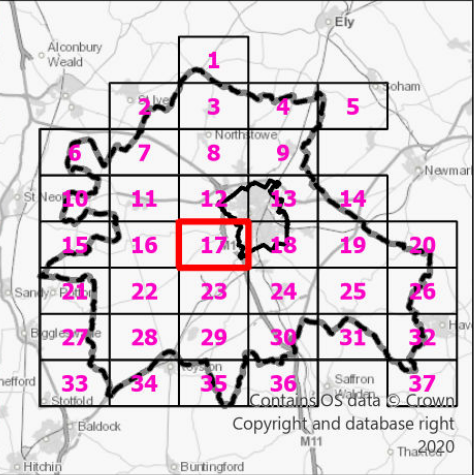
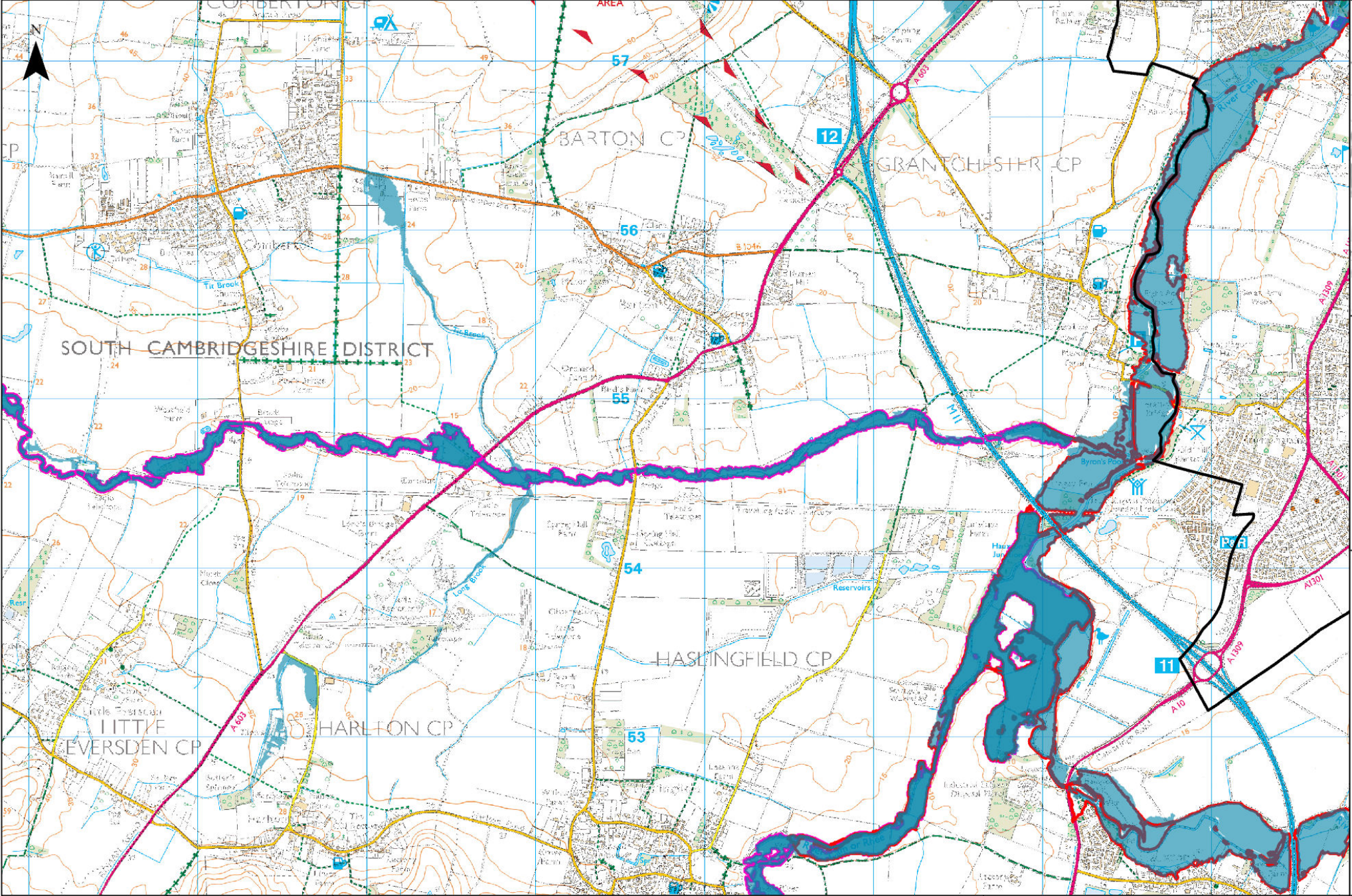


Legend

- Cambridge City Boundary
- South Cambridgeshire Boundary
- Functional Floodplain
- Cam Urban Model 2023
- Cam Rural 2014
- Cam Broadscale 2023
- Lower Ouse Model 2015
- Coldhams Brook Model 2013

Notes

The indicative functional floodplain is defined as land where water has to flow or be stored in times of flood. The map uses the 1 in 30 year flood risk from surface water extent was used. Models included are the Cam Urban (2023), Cam Rural (2014), Coldhams Brook (2013), Cam Broadscale (2023) and Lower Ouse (2015). Moreover, areas intended to flood, for example upstream flood storage areas designed to protect communities further downstream, classed as flood storage areas are identified as functional floodplains to safeguard them from development as suggested by the guidance.



Legend

- Cambridge City Boundary
- South Cambridgeshire Boundary
- Functional Floodplain
- Cam Urban Model 2023
- Cam Rural 2014
- Cam Broadscale 2023
- Lower Ouse Model 2015
- Coldhams Brook Model 2013

Notes

The indicative functional floodplain is defined as land where water has to flow or be stored in times of flood. The map uses the 1 in 30 year flood risk from surface water extent was used. Models included are the Cam Urban (2023), Cam Rural (2014), Coldhams Brook (2013), Cam Broadscale (2023) and Lower Ouse (2015). Moreover, areas intended to flood, for example upstream flood storage areas designed to protect communities further downstream, classed as flood storage areas are identified as functional floodplains to safeguard them from development as suggested by the guidance.