

Contains OS data © Crown Copyright and database right 2020

Legend

- Cambridge City Boundary
- South Cambridgeshire Boundary
- 100yr Modelled Flood Extent
- 1000yr Modelled Flood Extent

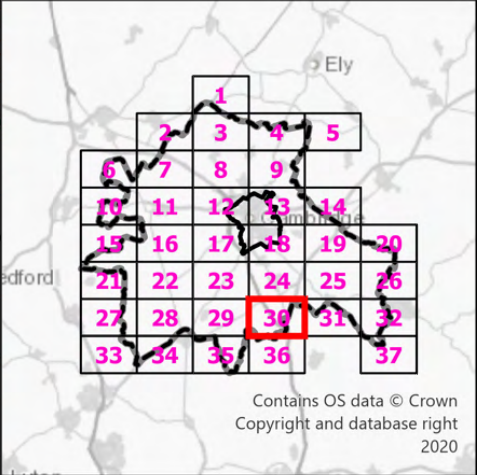
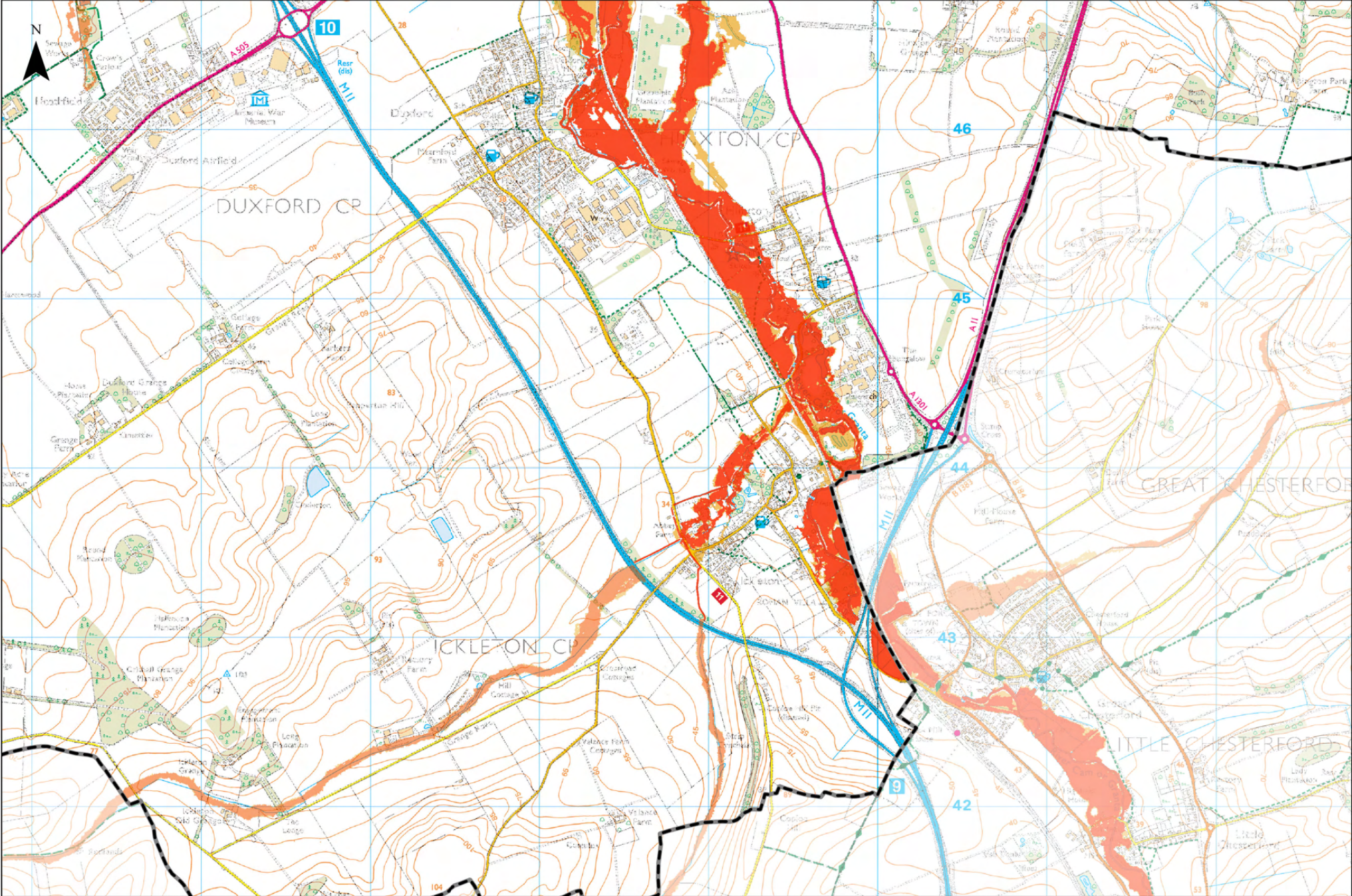
Notes

The Modelled Flood Extents map combines multiple model outputs to indicate modelled extents for the 1 in 100 year (1%) and 1 in 1000 year (0.1%) flood events. The model outputs were provided by the Environment Agency (EA). Models included in these are as follows:

- Bin Brook Model (2023)
- Cam Broadscale Model (2023)
- Cam Lodes (2023)
- Cam Rural Model (2014)
- Cam Urban Model (2023)
- Coldhams Brook Model (2013)
- Lower Ouse Model (2015)

The main type of model utilised by these is an ISIS-TuFLOW 1D-2D model.

Sheet Number: 29 of 37	1:23,960 @ A3	Date: 01/07/2025
	Drawn: OJ	Checked: MD
	Figure: 332612670/D3	Rev A



Contains OS data © Crown Copyright and database right 2020

Legend

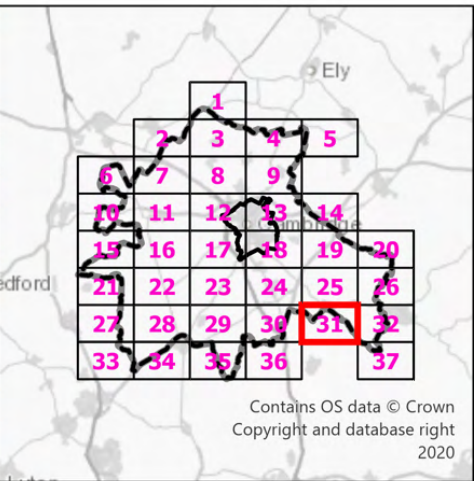
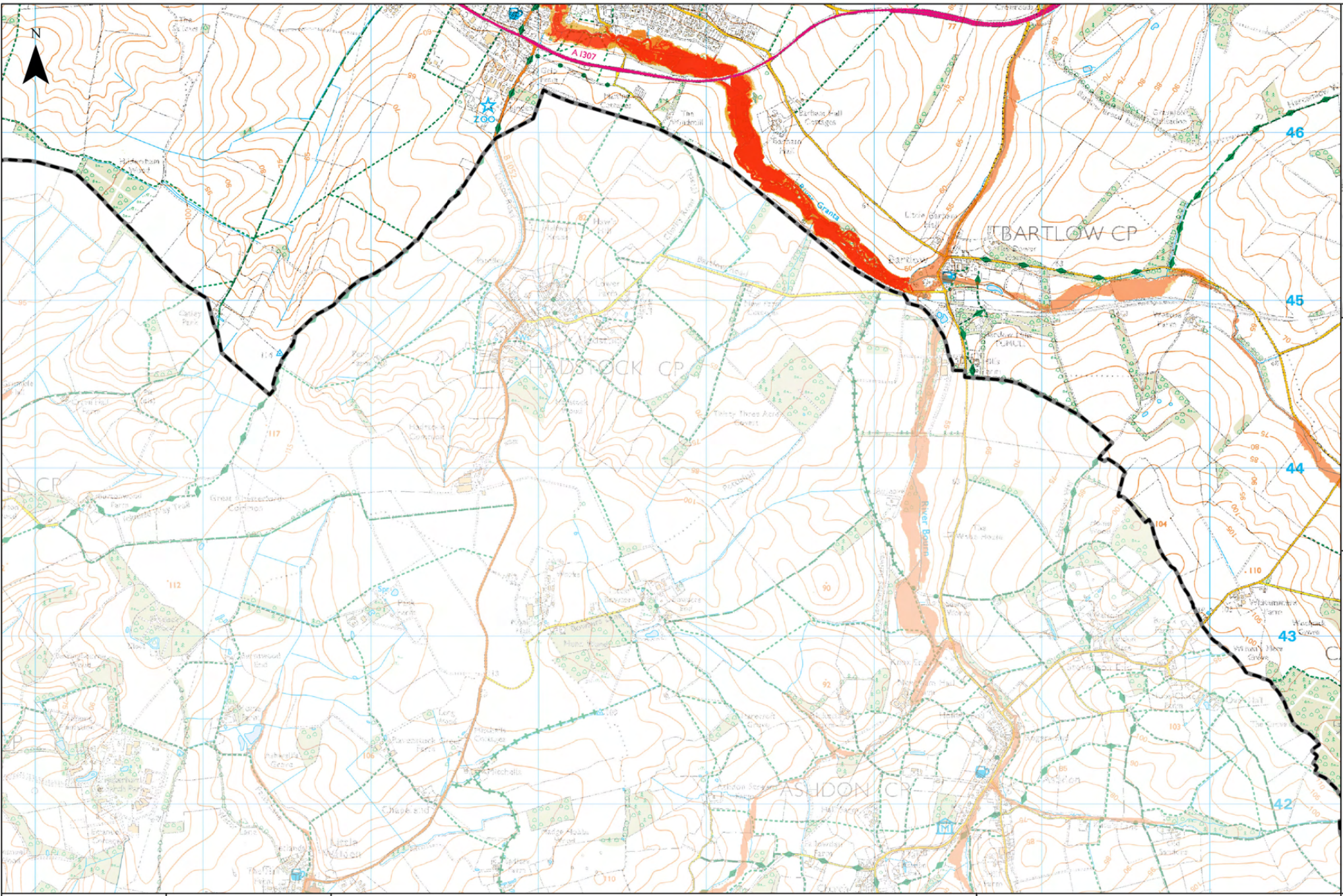
- Cambridge City Boundary
- South Cambridgeshire Boundary
- 100yr Modelled Flood Extent
- 1000yr Modelled Flood Extent

Notes

The Modelled Flood Extents map combines multiple model outputs to indicate modelled extents for the 1 in 100 year (1%) and 1 in 1000 year (0.1%) flood events. The model outputs were provided by the Environment Agency (EA). Models included in these are as follows:

- Bin Brook Model (2023)
- Cam Broadscale Model (2023)
- Cam Lodes (2023)
- Cam Rural Model (2014)
- Cam Urban Model (2023)
- Coldhams Brook Model (2013)
- Lower Ouse Model (2015)

The main type of model utilised by these is an ISIS-TuFLOW 1D-2D model.



Contains OS data © Crown Copyright and database right 2020

Legend

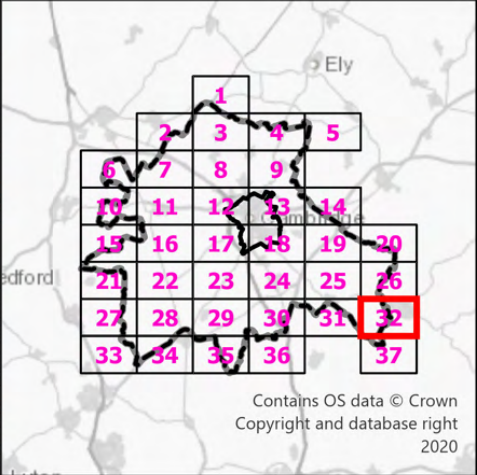
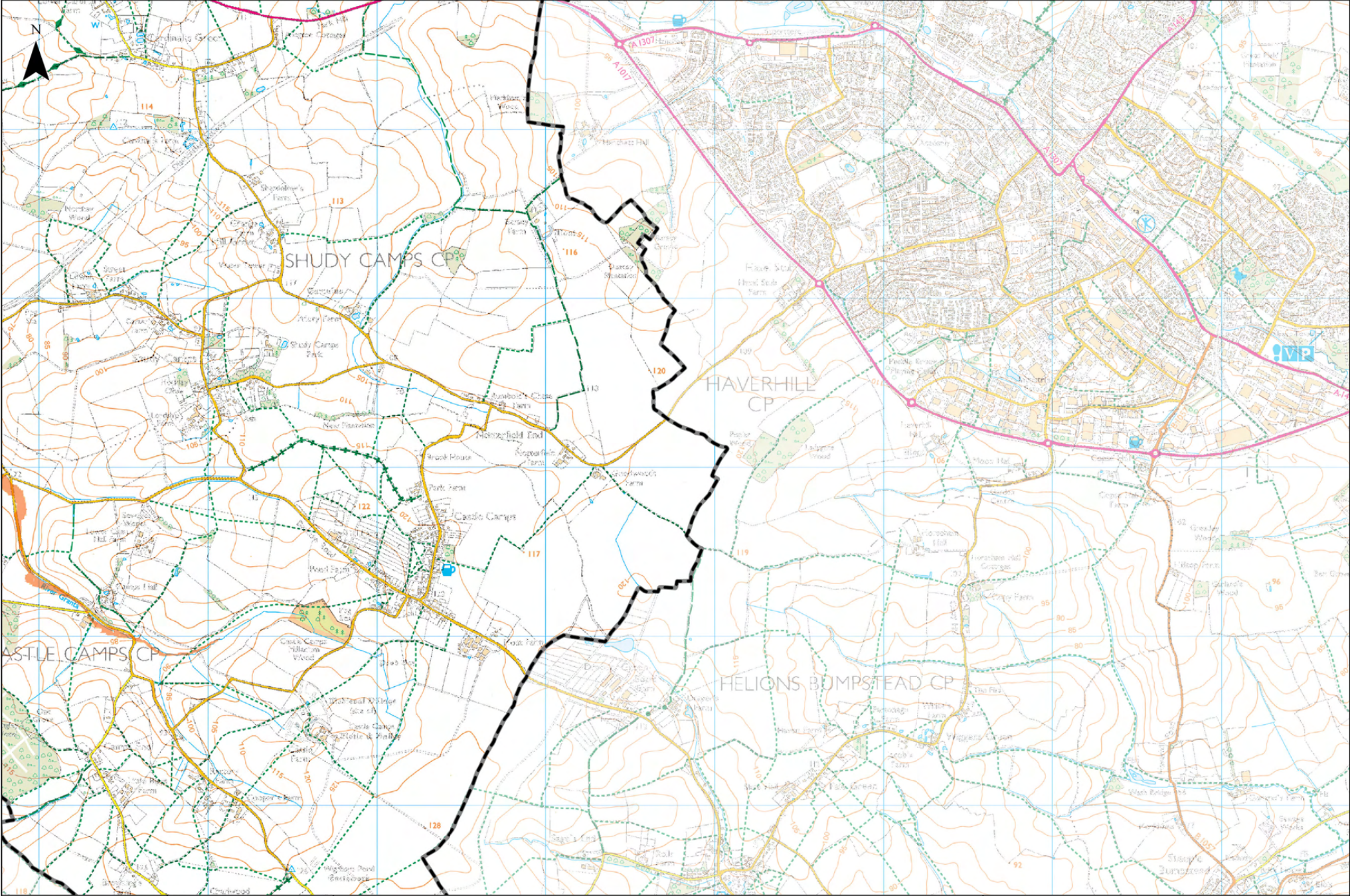
- Cambridge City Boundary
- South Cambridgeshire Boundary
- 100yr Modelled Flood Extent
- 1000yr Modelled Flood Extent

Notes

The Modelled Flood Extents map combines multiple model outputs to indicate modelled extents for the 1 in 100 year (1%) and 1 in 1000 year (0.1%) flood events. The model outputs were provided by the Environment Agency (EA). Models included in these are as follows:

- Bin Brook Model (2023)
- Cam Broadscale Model (2023)
- Cam Lodes (2023)
- Cam Rural Model (2014)
- Cam Urban Model (2023)
- Coldhams Brook Model (2013)
- Lower Ouse Model (2015)

The main type of model utilised by these is an ISIS-TuFLOW 1D-2D model.



Legend

- Cambridge City Boundary
- South Cambridgeshire Boundary
- 100yr Modelled Flood Extent
- 1000yr Modelled Flood Extent

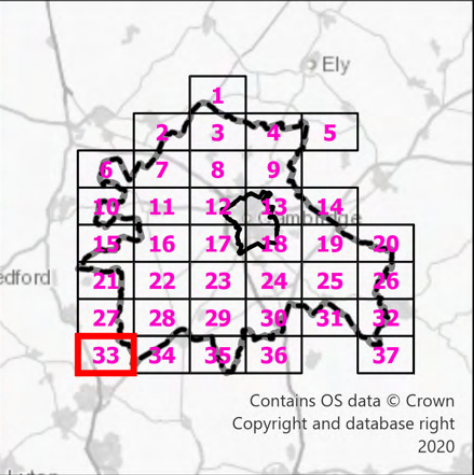
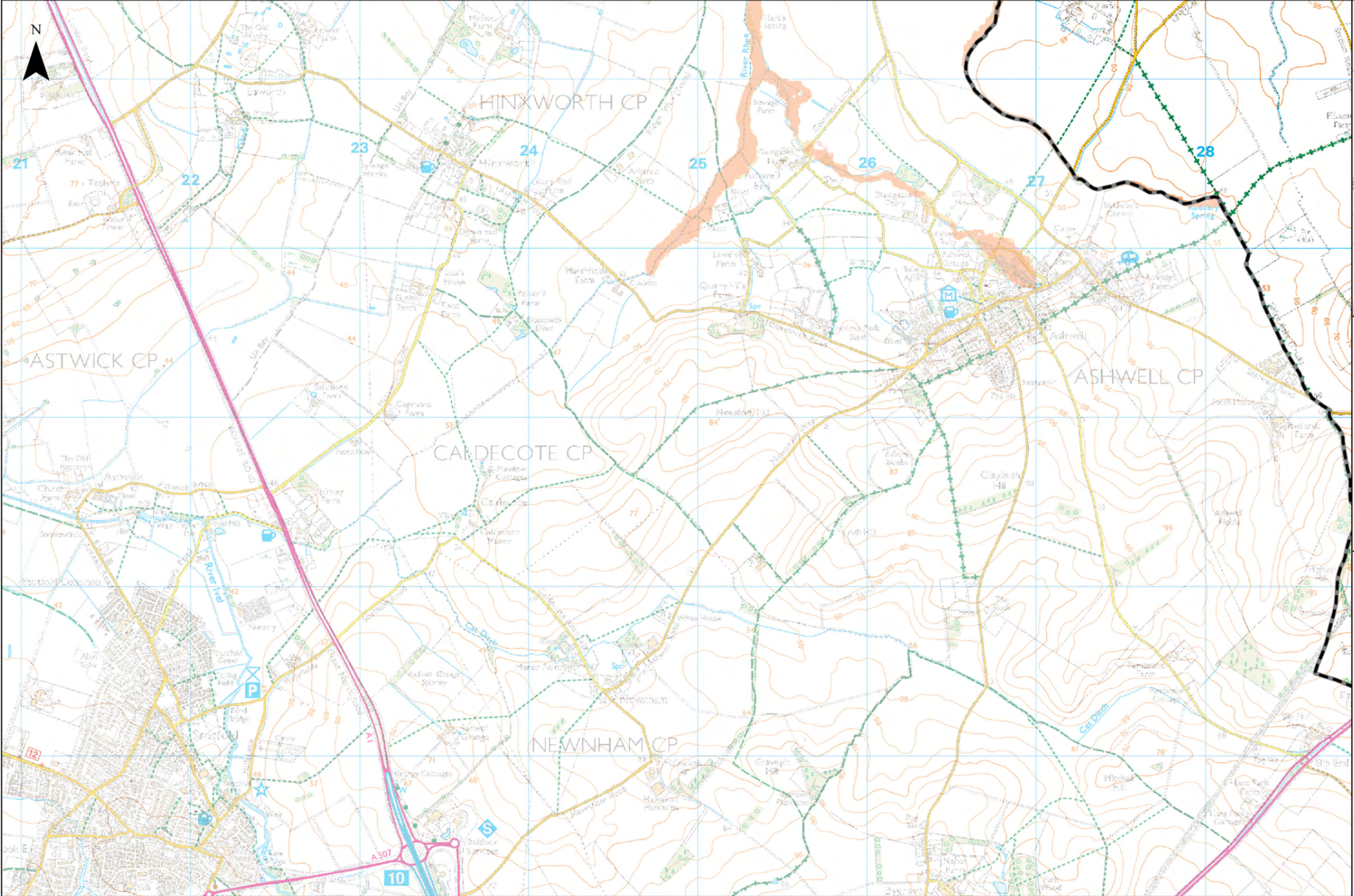
Notes

The Modelled Flood Extents map combines multiple model outputs to indicate modelled extents for the 1 in 100 year (1%) and 1 in 1000 year (0.1%) flood events. The model outputs were provided by the Environment Agency (EA). Models included in these are as follows:

- Bin Brook Model (2023)
- Cam Broadscale Model (2023)
- Cam Lodes (2023)
- Cam Rural Model (2014)
- Cam Urban Model (2023)
- Coldhams Brook Model (2013)
- Lower Ouse Model (2015)

The main type of model utilised by these is an ISIS-TuFLOW 1D-2D model.

Sheet Number: 32 of 37	1:23,960 @ A3	Date: 01/07/2025
	Drawn: OJ	Checked: MD
	Figure: 332612670/D3	Rev A



Contains OS data © Crown Copyright and database right 2020

Legend

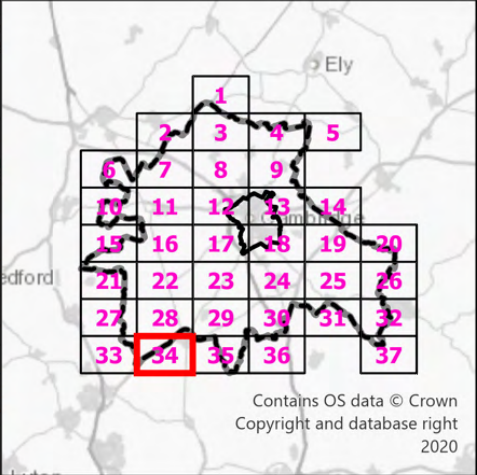
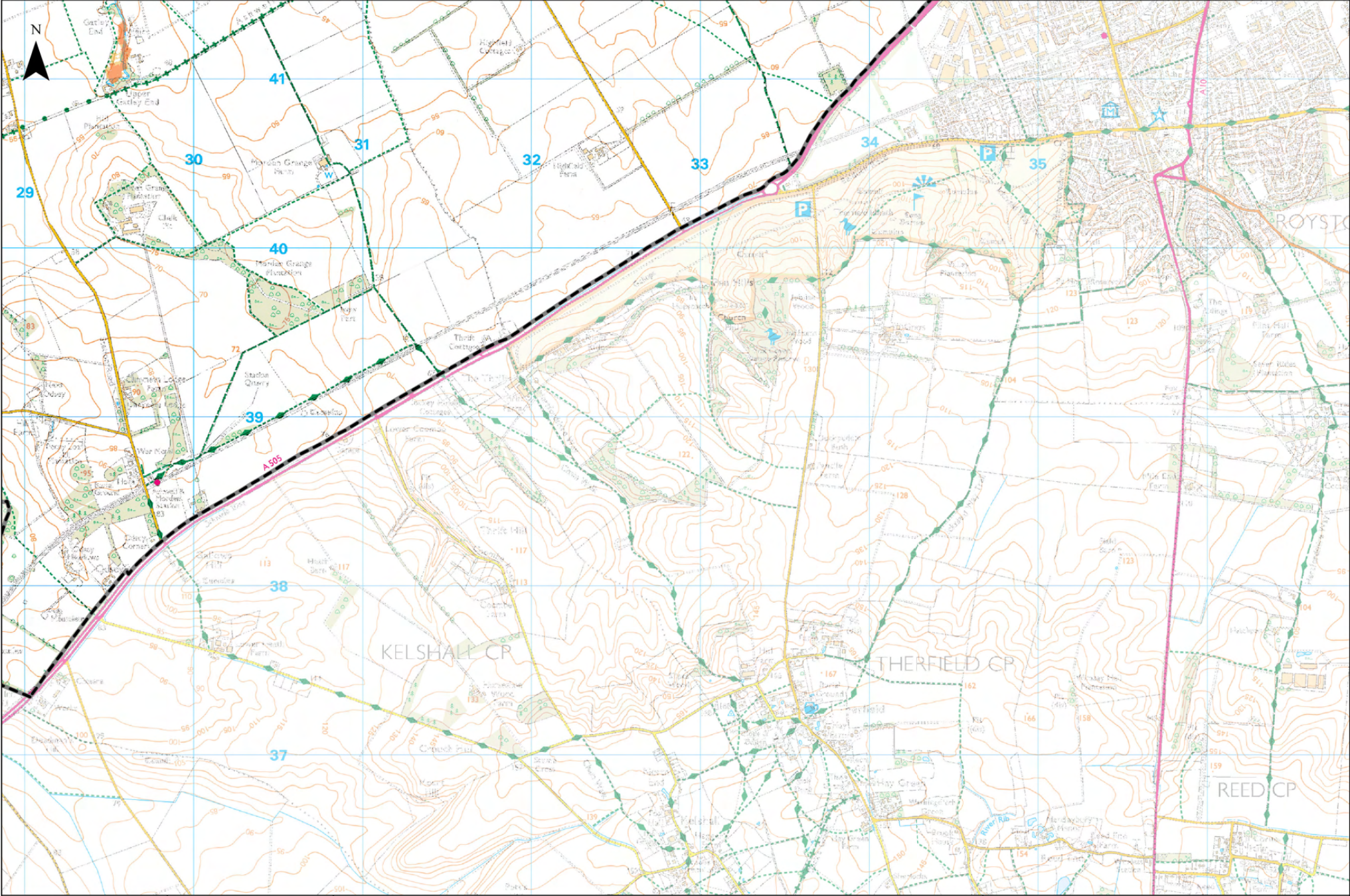
- Cambridge City Boundary
- South Cambridgeshire Boundary
- 100yr Modelled Flood Extent
- 1000yr Modelled Flood Extent

Notes

The Modelled Flood Extents map combines multiple model outputs to indicate modelled extents for the 1 in 100 year (1%) and 1 in 1000 year (0.1%) flood events. The model outputs were provided by the Environment Agency (EA). Models included in these are as follows:

- Bin Brook Model (2023)
- Cam Broadscale Model (2023)
- Cam Lodes (2023)
- Cam Rural Model (2014)
- Cam Urban Model (2023)
- Coldhams Brook Model (2013)
- Lower Ouse Model (2015)

The main type of model utilised by these is an ISIS-TuFLOW 1D-2D model.



Legend

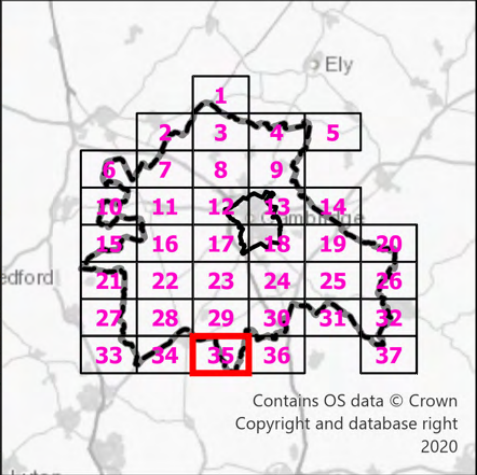
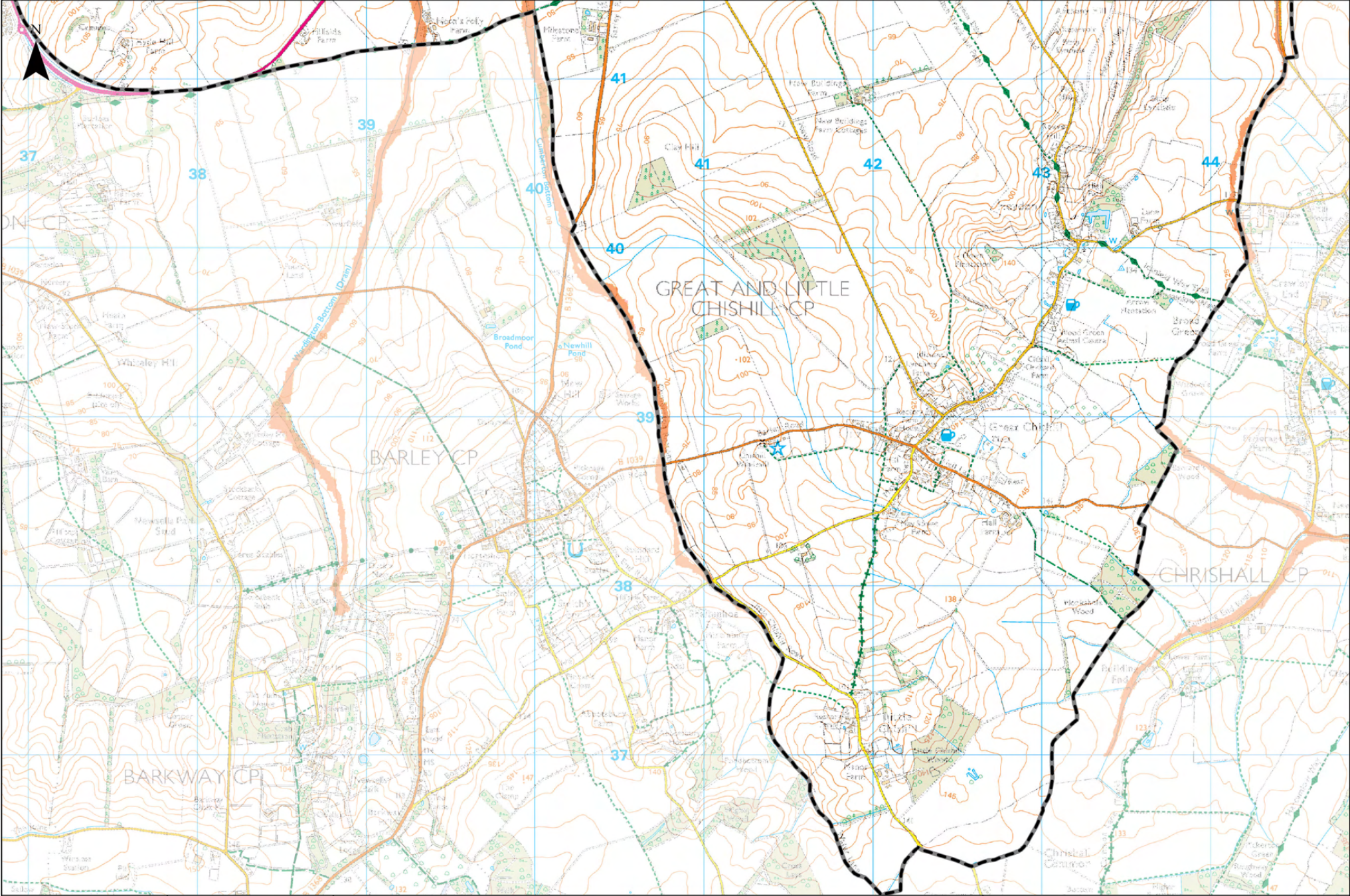
- Cambridge City Boundary
- South Cambridgeshire Boundary
- 100yr Modelled Flood Extent
- 1000yr Modelled Flood Extent

Notes

The Modelled Flood Extents map combines multiple model outputs to indicate modelled extents for the 1 in 100 year (1%) and 1 in 1000 year (0.1%) flood events. The model outputs were provided by the Environment Agency (EA). Models included in these are as follows:

- Bin Brook Model (2023)
- Cam Broadscale Model (2023)
- Cam Lodes (2023)
- Cam Rural Model (2014)
- Cam Urban Model (2023)
- Coldhams Brook Model (2013)
- Lower Ouse Model (2015)

The main type of model utilised by these is an ISIS-TuFLOW 1D-2D model.



Legend

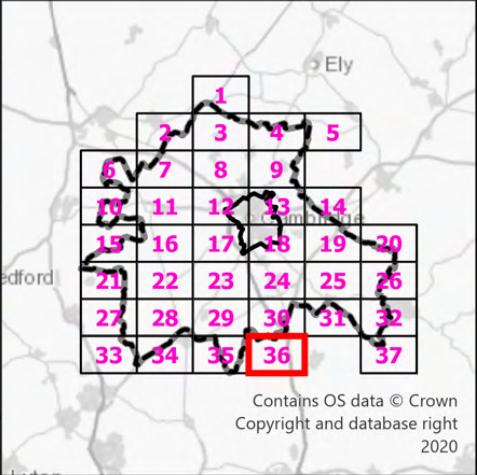
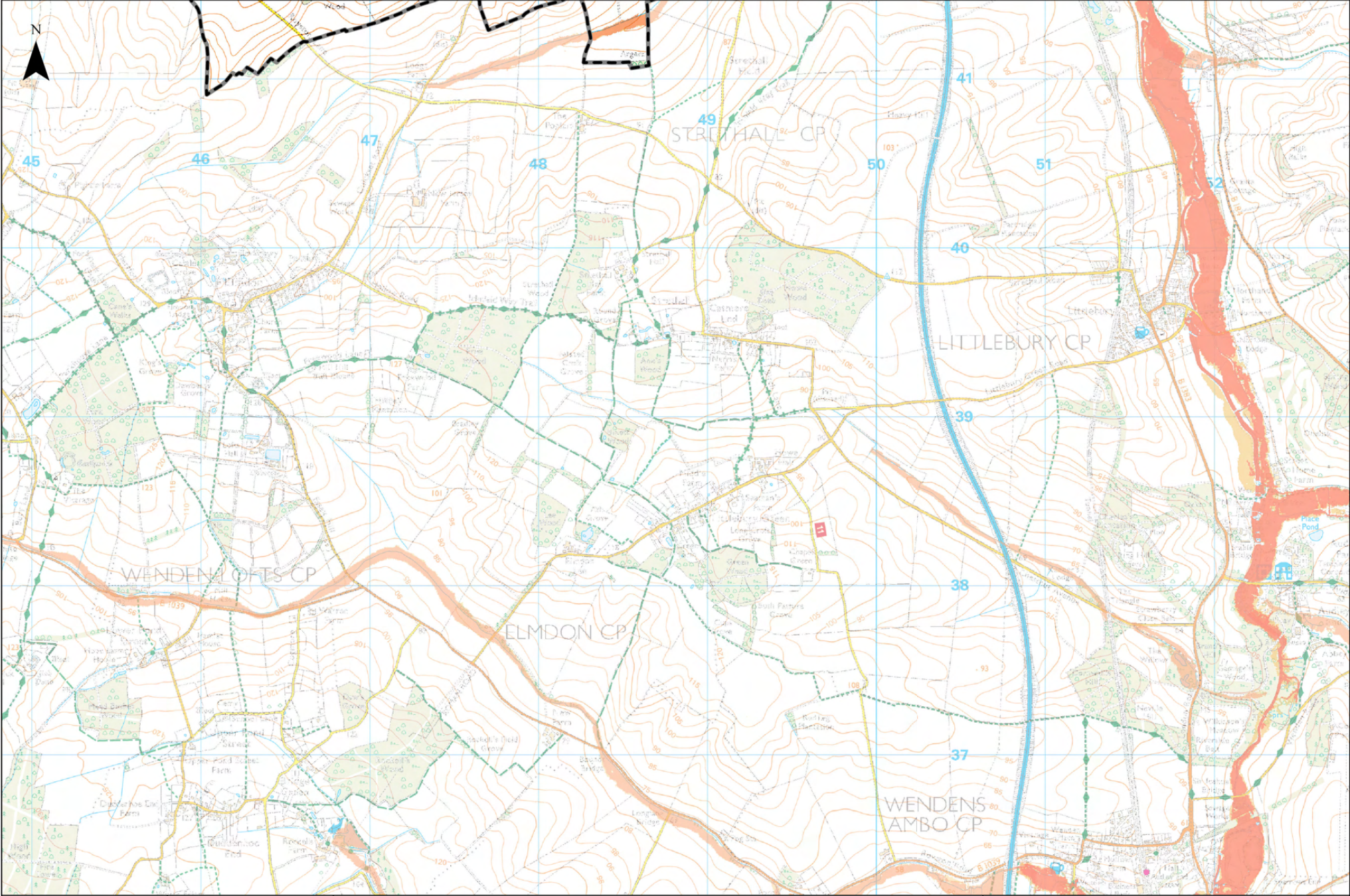
- Cambridge City Boundary
- South Cambridgeshire Boundary
- 100yr Modelled Flood Extent
- 1000yr Modelled Flood Extent

Notes

The Modelled Flood Extents map combines multiple model outputs to indicate modelled extents for the 1 in 100 year (1%) and 1 in 1000 year (0.1%) flood events. The model outputs were provided by the Environment Agency (EA). Models included in these are as follows:

- Bin Brook Model (2023)
- Cam Broadscale Model (2023)
- Cam Lodes (2023)
- Cam Rural Model (2014)
- Cam Urban Model (2023)
- Coldhams Brook Model (2013)
- Lower Ouse Model (2015)

The main type of model utilised by these is an ISIS-TuFLOW 1D-2D model.



Legend

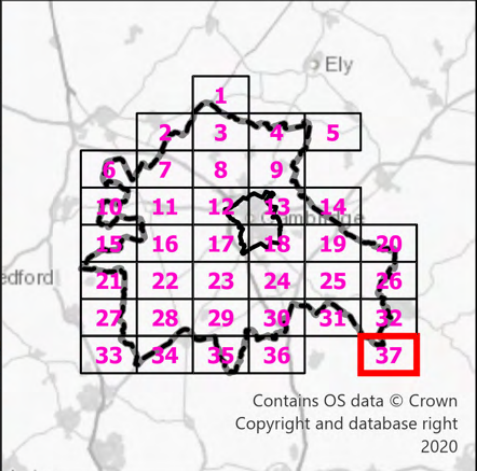
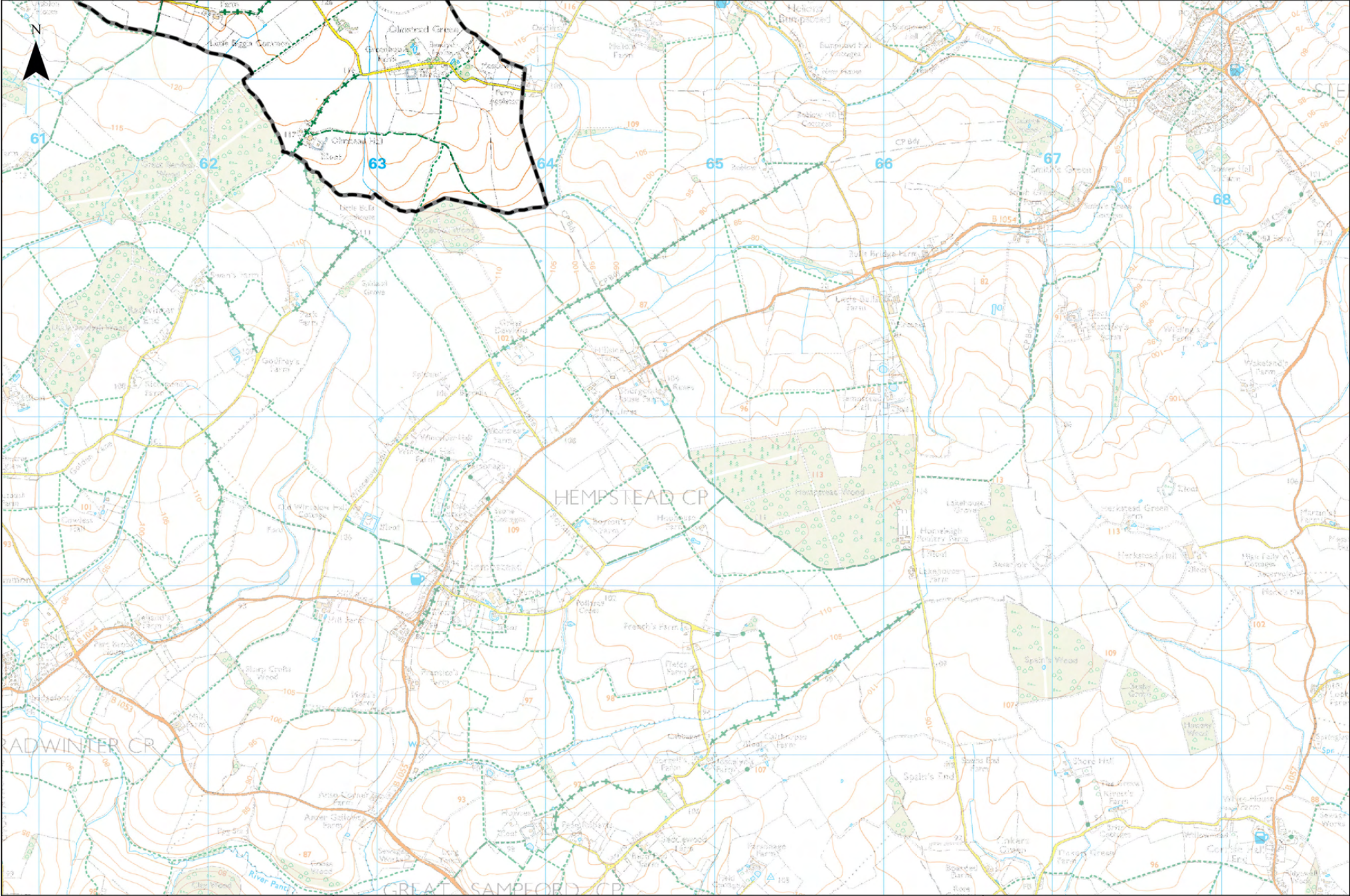
- Cambridge City Boundary
- South Cambridgeshire Boundary
- 100yr Modelled Flood Extent
- 1000yr Modelled Flood Extent

Notes

The Modelled Flood Extents map combines multiple model outputs to indicate modelled extents for the 1 in 100 year (1%) and 1 in 1000 year (0.1%) flood events. The model outputs were provided by the Environment Agency (EA). Models included in these are as follows:

- Bin Brook Model (2023)
- Cam Broadscale Model (2023)
- Cam Lodes (2023)
- Cam Rural Model (2014)
- Cam Urban Model (2023)
- Coldhams Brook Model (2013)
- Lower Ouse Model (2015)

The main type of model utilised by these is an ISIS-TuFLOW 1D-2D model.



Legend

- Cambridge City Boundary
- South Cambridgeshire Boundary
- 100yr Modelled Flood Extent
- 1000yr Modelled Flood Extent

Notes

The Modelled Flood Extents map combines multiple model outputs to indicate modelled extents for the 1 in 100 year (1%) and 1 in 1000 year (0.1%) flood events. The model outputs were provided by the Environment Agency (EA). Models included in these are as follows:

- Bin Brook Model (2023)
- Cam Broadscale Model (2023)
- Cam Lodes (2023)
- Cam Rural Model (2014)
- Cam Urban Model (2023)
- Coldhams Brook Model (2013)
- Lower Ouse Model (2015)

The main type of model utilised by these is an ISIS-TuFLOW 1D-2D model.