

Contains OS data © Crown Copyright and database right 2020

**Legend**

- Cambridge City Boundary
- South Cambridgeshire Boundary
- 100yr Modelled Flood Extent
- 1000yr Modelled Flood Extent

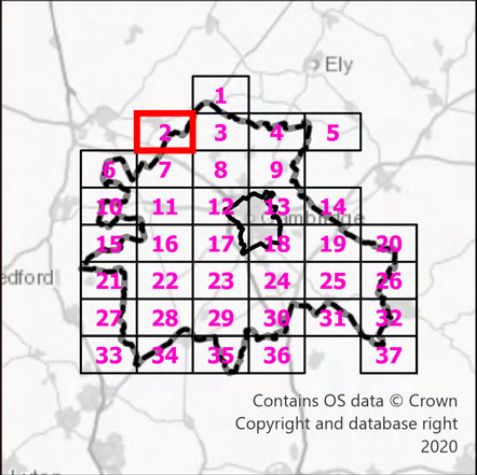
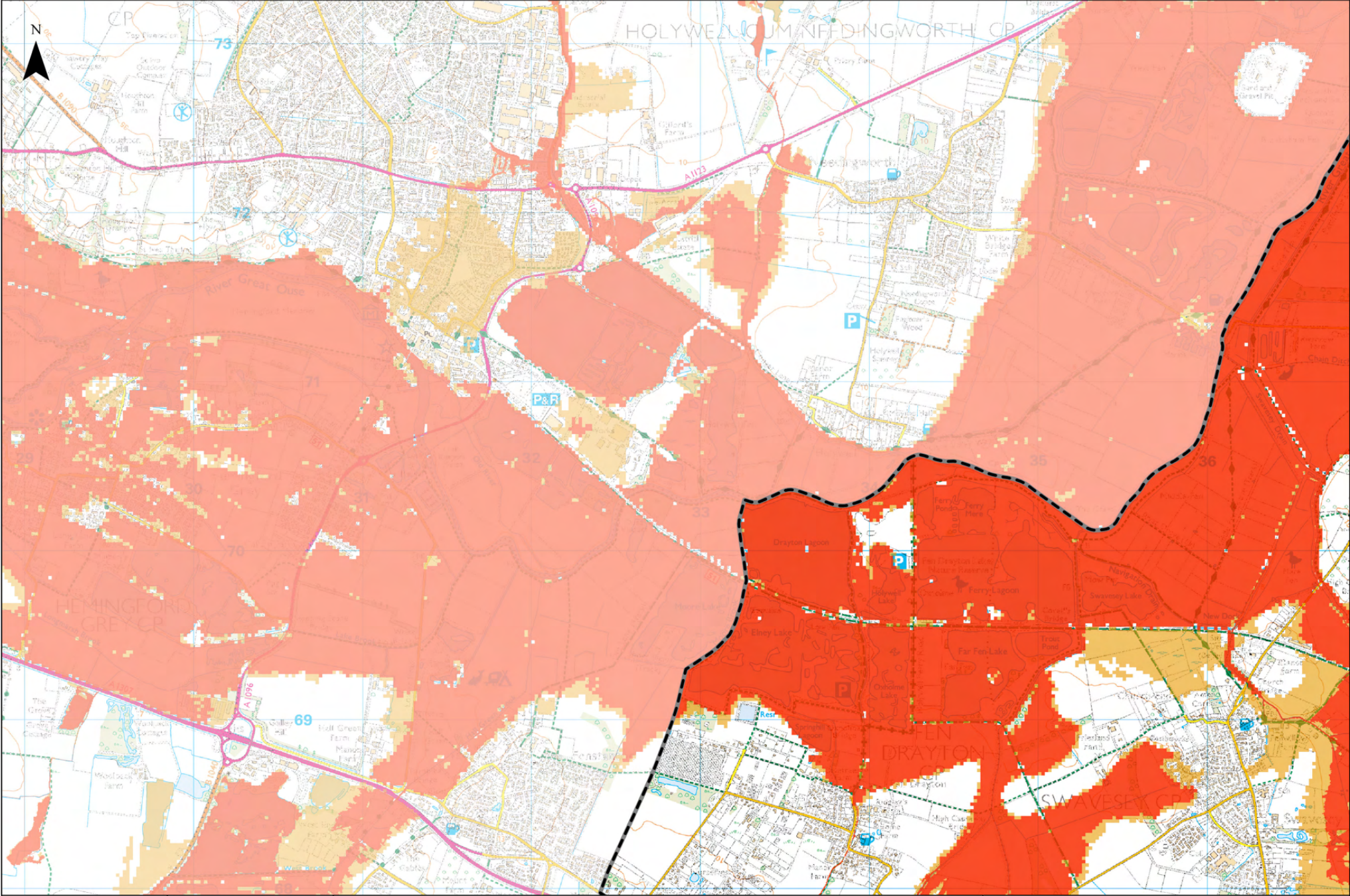
**Notes**

The Modelled Flood Extents map combines multiple model outputs to indicate modelled extents for the 1 in 100 year (1%) and 1 in 1000 year (0.1%) flood events. The model outputs were provided by the Environment Agency (EA). Models included in these are as follows:

- Bin Brook Model (2023)
- Cam Broadscale Model (2023)
- Cam Lodes (2023)
- Cam Rural Model (2014)
- Cam Urban Model (2023)
- Coldhams Brook Model (2013)
- Lower Ouse Model (2015)

The main type of model utilised by these is an ISIS-TuFLOW 1D-2D model.





Contains OS data © Crown Copyright and database right 2020

**Legend**

- Cambridge City Boundary
- South Cambridgeshire Boundary
- 100yr Modelled Flood Extent
- 1000yr Modelled Flood Extent

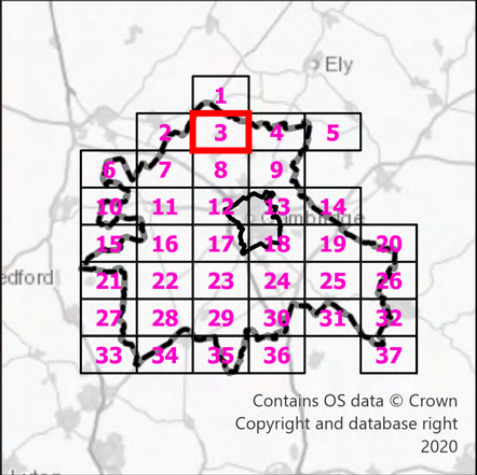
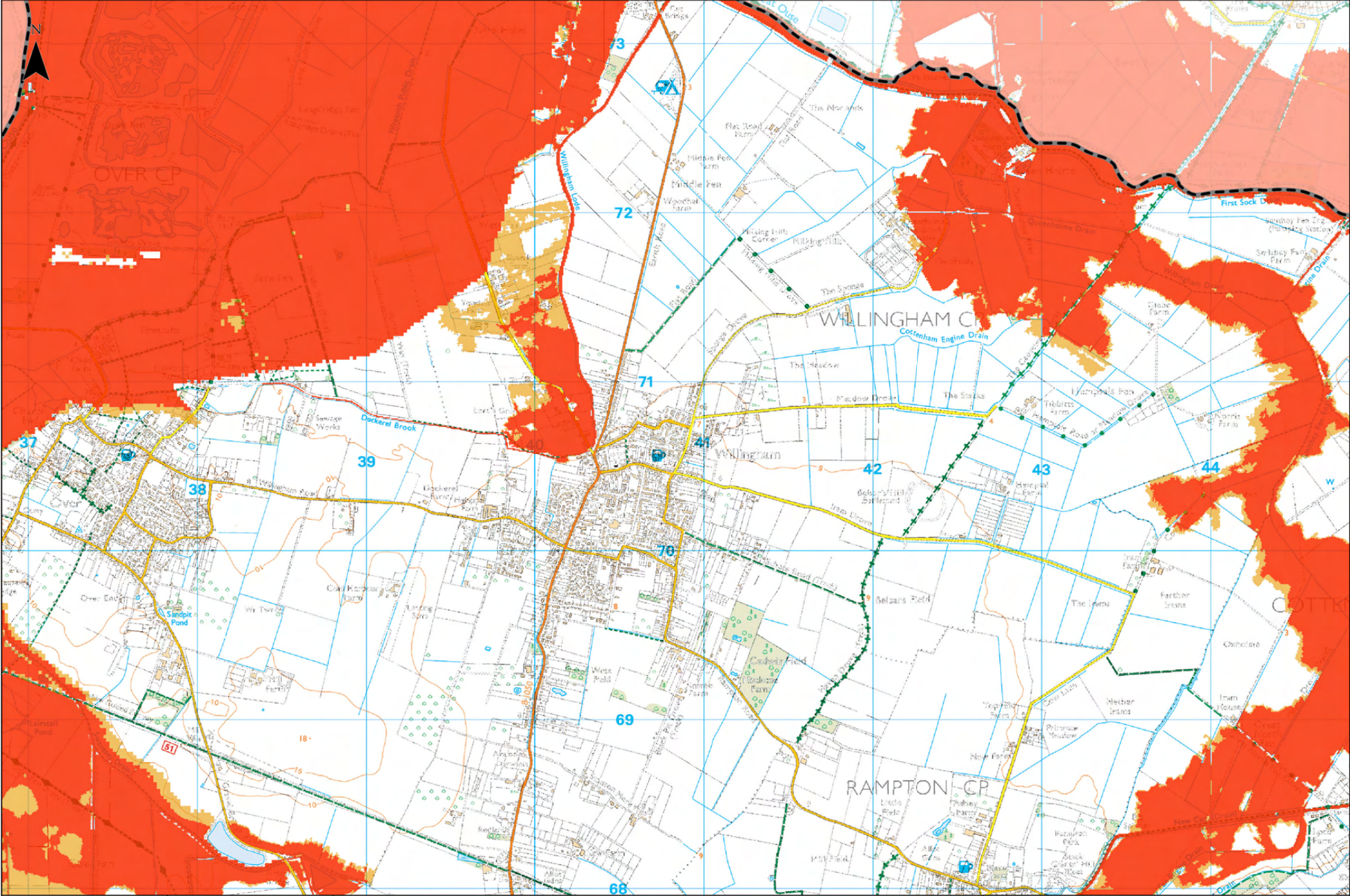
**Notes**

The Modelled Flood Extents map combines multiple model outputs to indicate modelled extents for the 1 in 100 year (1%) and 1 in 1000 year (0.1%) flood events. The model outputs were provided by the Environment Agency (EA). Models included in these are as follows:

- Bin Brook Model (2023)
- Cam Broadscale Model (2023)
- Cam Lodes (2023)
- Cam Rural Model (2014)
- Cam Urban Model (2023)
- Coldhams Brook Model (2013)
- Lower Ouse Model (2015)

The main type of model utilised by these is an ISIS-TuFLOW 1D-2D model.





Contains OS data © Crown Copyright and database right 2020

**Legend**

- Cambridge City Boundary
- South Cambridgeshire Boundary
- 100yr Modelled Flood Extent
- 1000yr Modelled Flood Extent

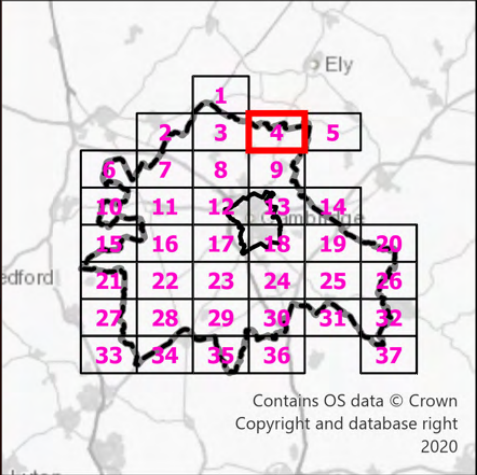
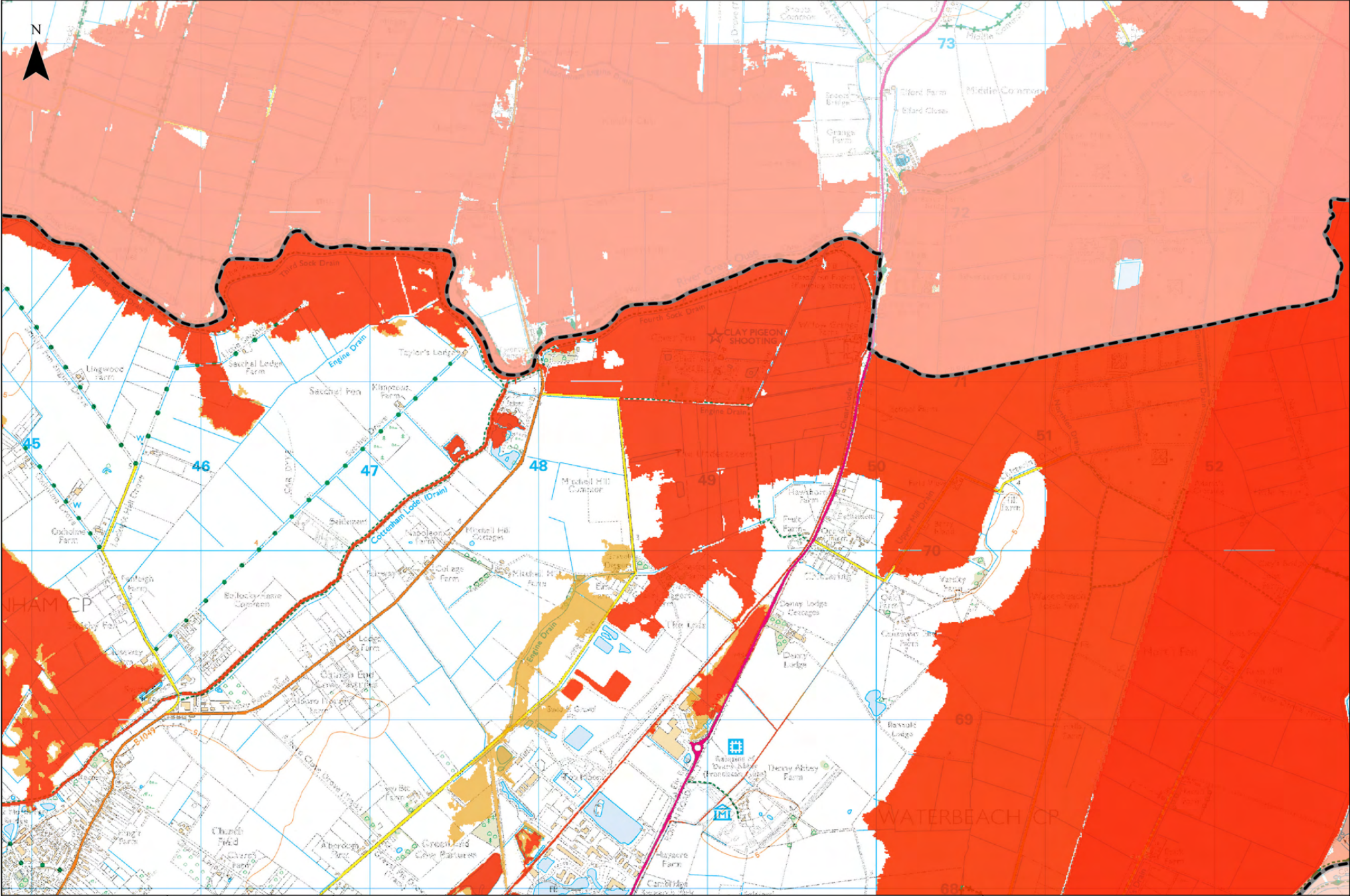
**Notes**

The Modelled Flood Extents map combines multiple model outputs to indicate modelled extents for the 1 in 100 year (1%) and 1 in 1000 year (0.1%) flood events. The model outputs were provided by the Environment Agency (EA). Models included in these are as follows:

- Bin Brook Model (2023)
- Cam Broadscale Model (2023)
- Cam Lodes (2023)
- Cam Rural Model (2014)
- Cam Urban Model (2023)
- Coldhams Brook Model (2013)
- Lower Ouse Model (2015)

The main type of model utilised by these is an ISIS-TuFLOW 1D-2D model.





Contains OS data © Crown Copyright and database right 2020

**Legend**

- Cambridge City Boundary
- South Cambridgeshire Boundary
- 100yr Modelled Flood Extent
- 1000yr Modelled Flood Extent

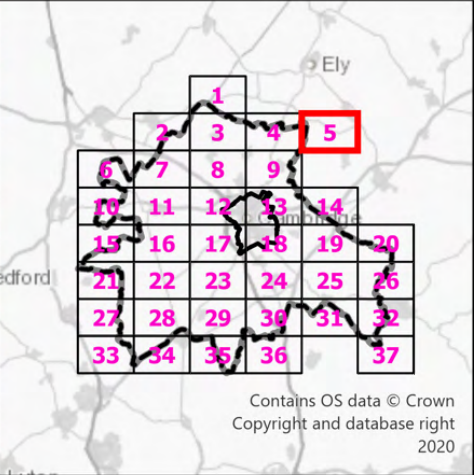
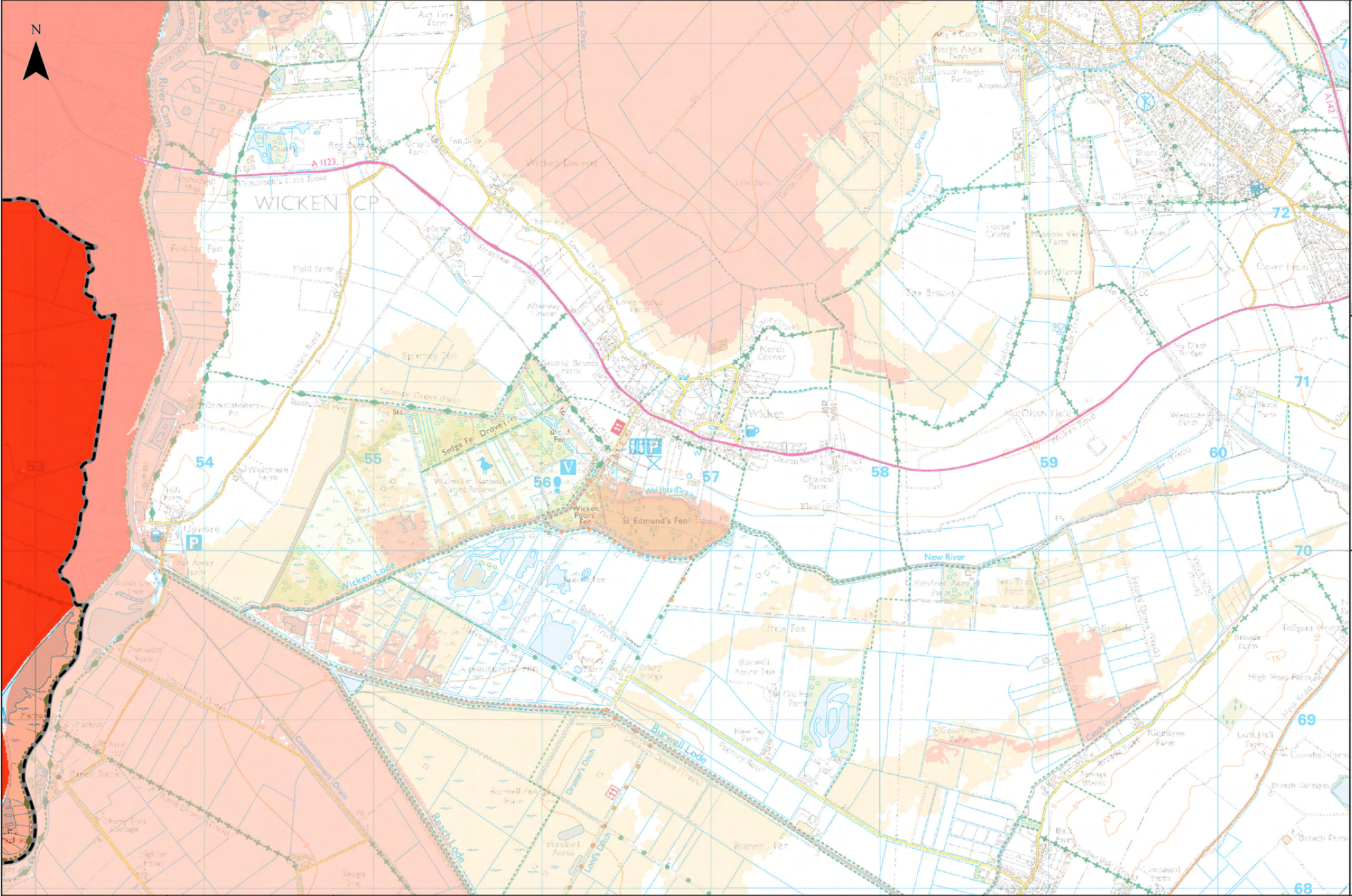
**Notes**

The Modelled Flood Extents map combines multiple model outputs to indicate modelled extents for the 1 in 100 year (1%) and 1 in 1000 year (0.1%) flood events. The model outputs were provided by the Environment Agency (EA). Models included in these are as follows:

- Bin Brook Model (2023)
- Cam Broadscale Model (2023)
- Cam Lodes (2023)
- Cam Rural Model (2014)
- Cam Urban Model (2023)
- Coldhams Brook Model (2013)
- Lower Ouse Model (2015)

The main type of model utilised by these is an ISIS-TuFLOW 1D-2D model.





Contains OS data © Crown Copyright and database right 2020

**Legend**

- Cambridge City Boundary
- South Cambridgeshire Boundary
- 100yr Modelled Flood Extent
- 1000yr Modelled Flood Extent

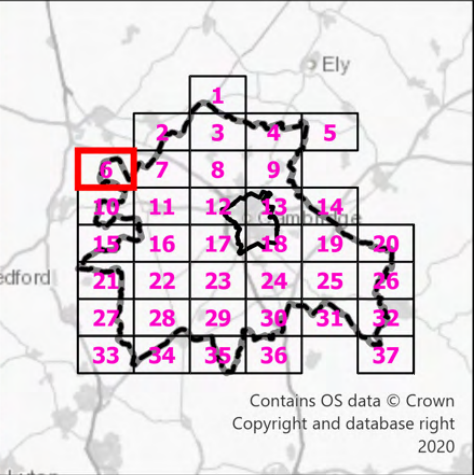
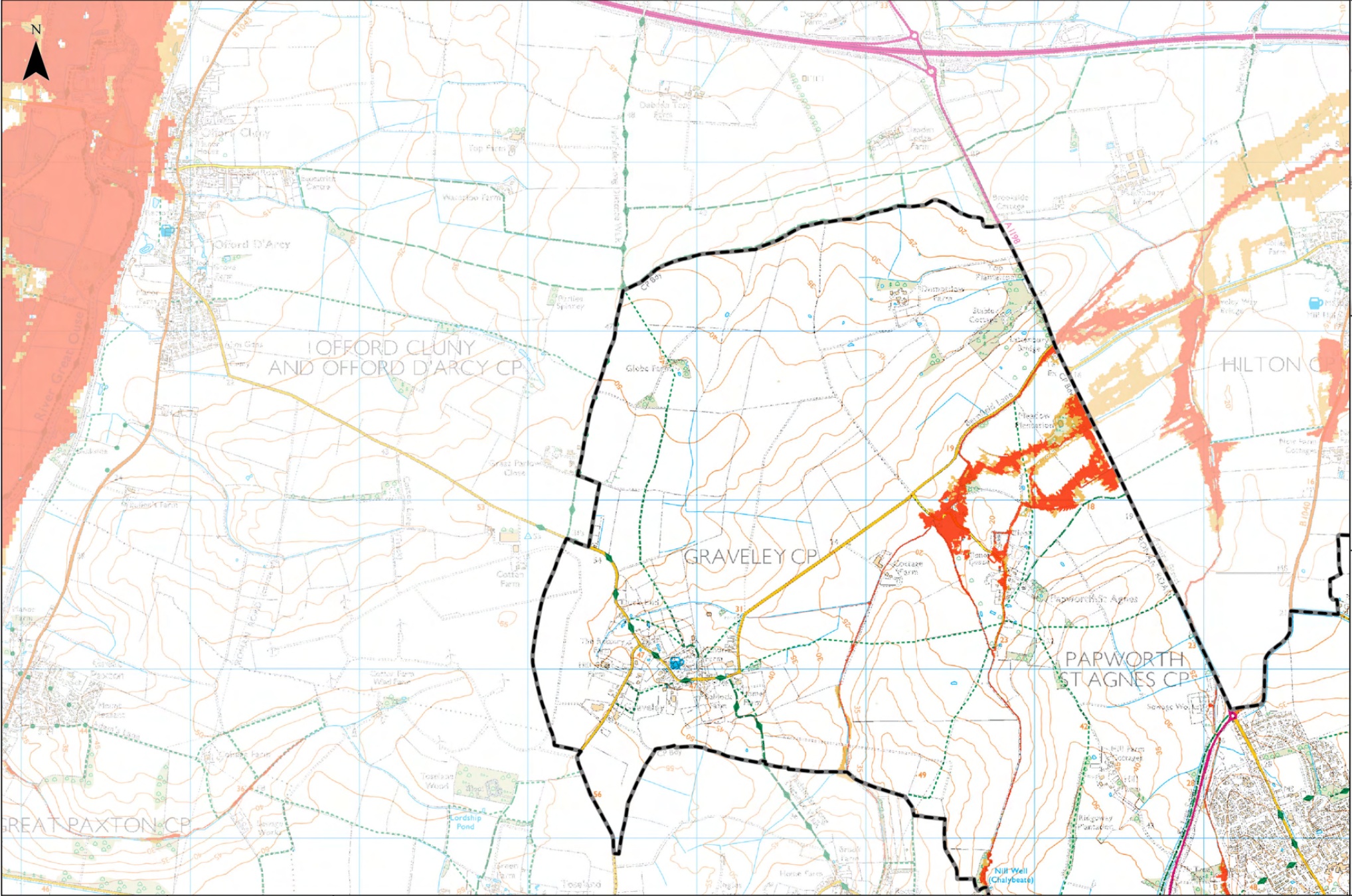
**Notes**

The Modelled Flood Extents map combines multiple model outputs to indicate modelled extents for the 1 in 100 year (1%) and 1 in 1000 year (0.1%) flood events. The model outputs were provided by the Environment Agency (EA). Models included in these are as follows:

- Bin Brook Model (2023)
- Cam Broadscale Model (2023)
- Cam Lodes (2023)
- Cam Rural Model (2014)
- Cam Urban Model (2023)
- Coldhams Brook Model (2013)
- Lower Ouse Model (2015)

The main type of model utilised by these is an ISIS-TuFLOW 1D-2D model.





**Legend**

- Cambridge City Boundary
- South Cambridgeshire Boundary
- 100yr Modelled Flood Extent
- 1000yr Modelled Flood Extent

**Notes**

The Modelled Flood Extents map combines multiple model outputs to indicate modelled extents for the 1 in 100 year (1%) and 1 in 1000 year (0.1%) flood events. The model outputs were provided by the Environment Agency (EA). Models included in these are as follows:

- Bin Brook Model (2023)
- Cam Broadscale Model (2023)
- Cam Lodes (2023)
- Cam Rural Model (2014)
- Cam Urban Model (2023)
- Coldhams Brook Model (2013)
- Lower Ouse Model (2015)

The main type of model utilised by these is an ISIS-TuFLOW 1D-2D model.

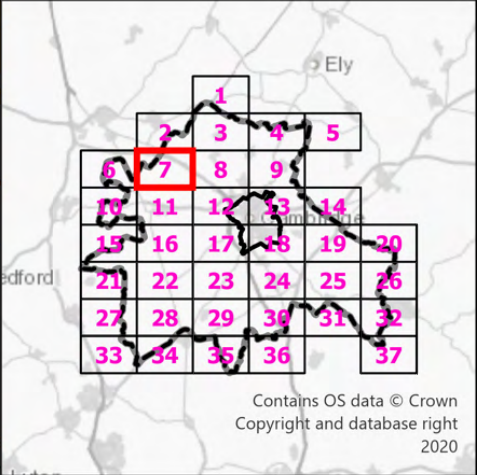
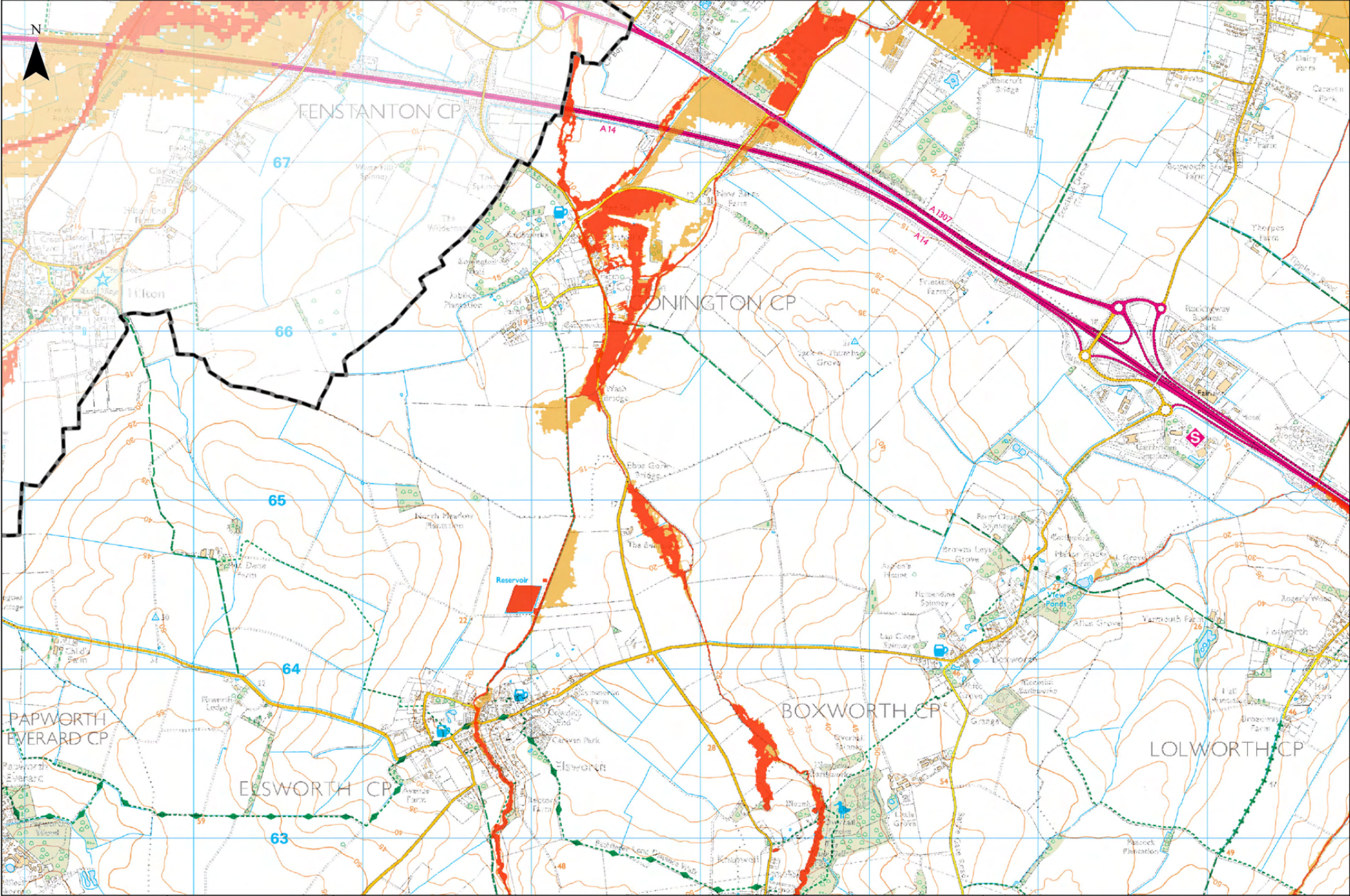


**Greater Cambridge Integrated Water Management Study**  
**Modelled Flood Extents**

0 1 2 km  
© Crown copyright and database rights 2025 OS AC0000810824  
Contains Environment Agency information © Environment Agency and/or database rights.  
May contain Ordnance Survey data © Crown copyright 2025 Ordnance Survey OS AC0000807064.

Sheet Number:  6 of 37	1:23,960 @ A3	Date: 01/07/2025
	Drawn: OJ	Checked: MD
	Figure: 332612670/D3	Rev A





Contains OS data © Crown Copyright and database right 2020

**Legend**

- Cambridge City Boundary
- South Cambridgeshire Boundary
- 100yr Modelled Flood Extent
- 1000yr Modelled Flood Extent

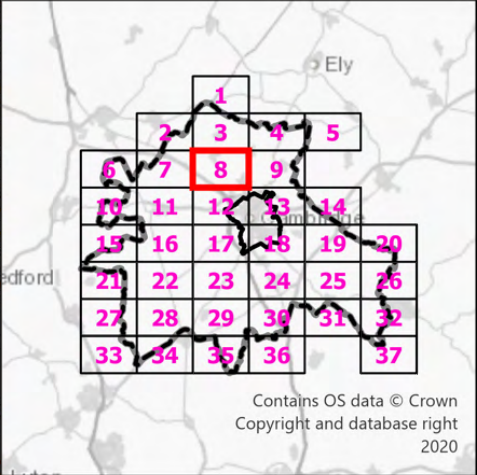
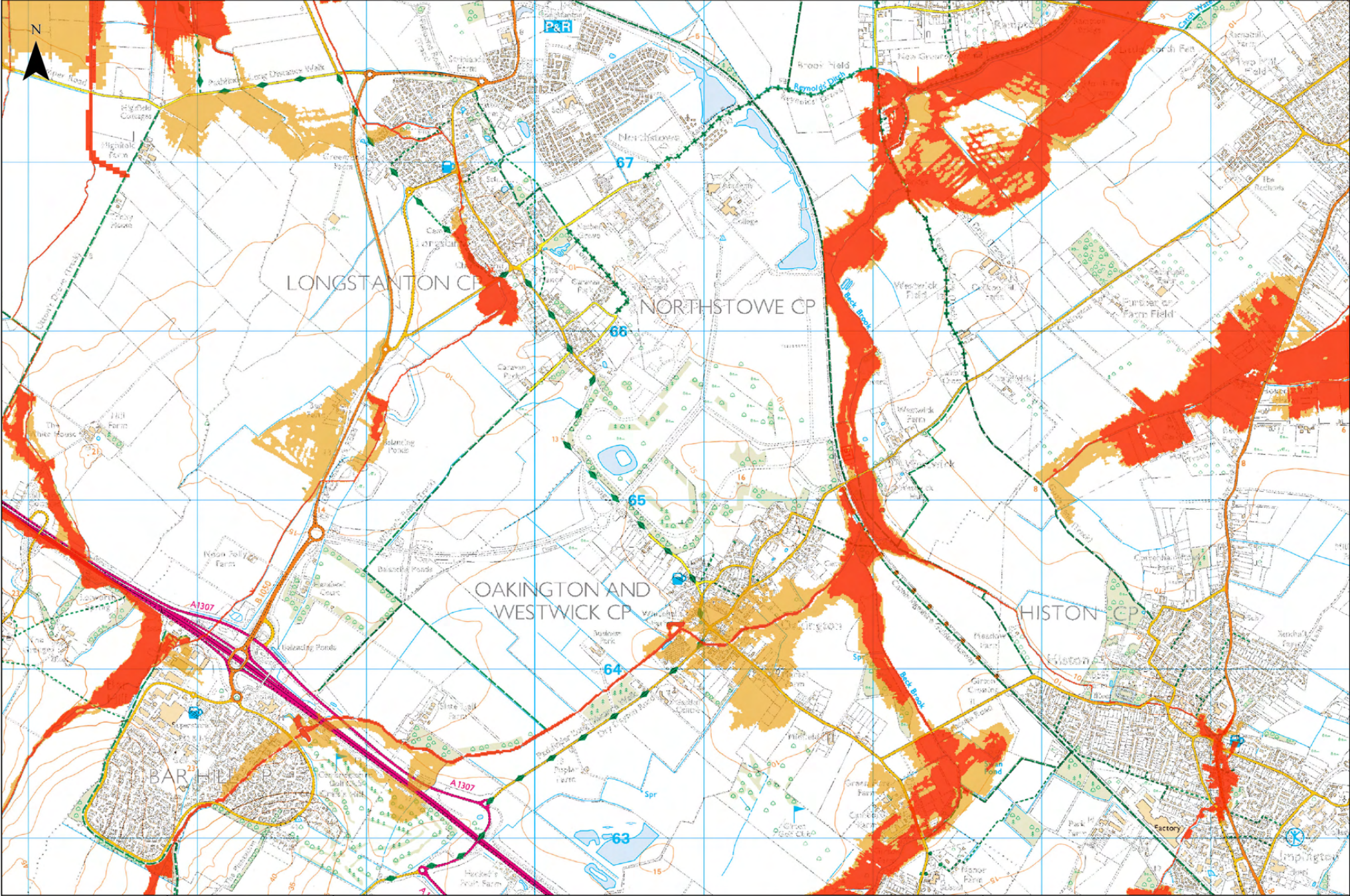
**Notes**

The Modelled Flood Extents map combines multiple model outputs to indicate modelled extents for the 1 in 100 year (1%) and 1 in 1000 year (0.1%) flood events. The model outputs were provided by the Environment Agency (EA). Models included in these are as follows:

- Bin Brook Model (2023)
- Cam Broadscale Model (2023)
- Cam Lodes (2023)
- Cam Rural Model (2014)
- Cam Urban Model (2023)
- Coldhams Brook Model (2013)
- Lower Ouse Model (2015)

The main type of model utilised by these is an ISIS-TuFLOW 1D-2D model.





Contains OS data © Crown Copyright and database right 2020

**Legend**

- Cambridge City Boundary
- South Cambridgeshire Boundary
- 100yr Modelled Flood Extent
- 1000yr Modelled Flood Extent

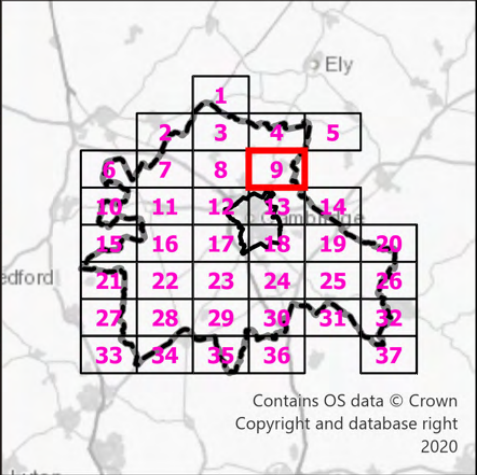
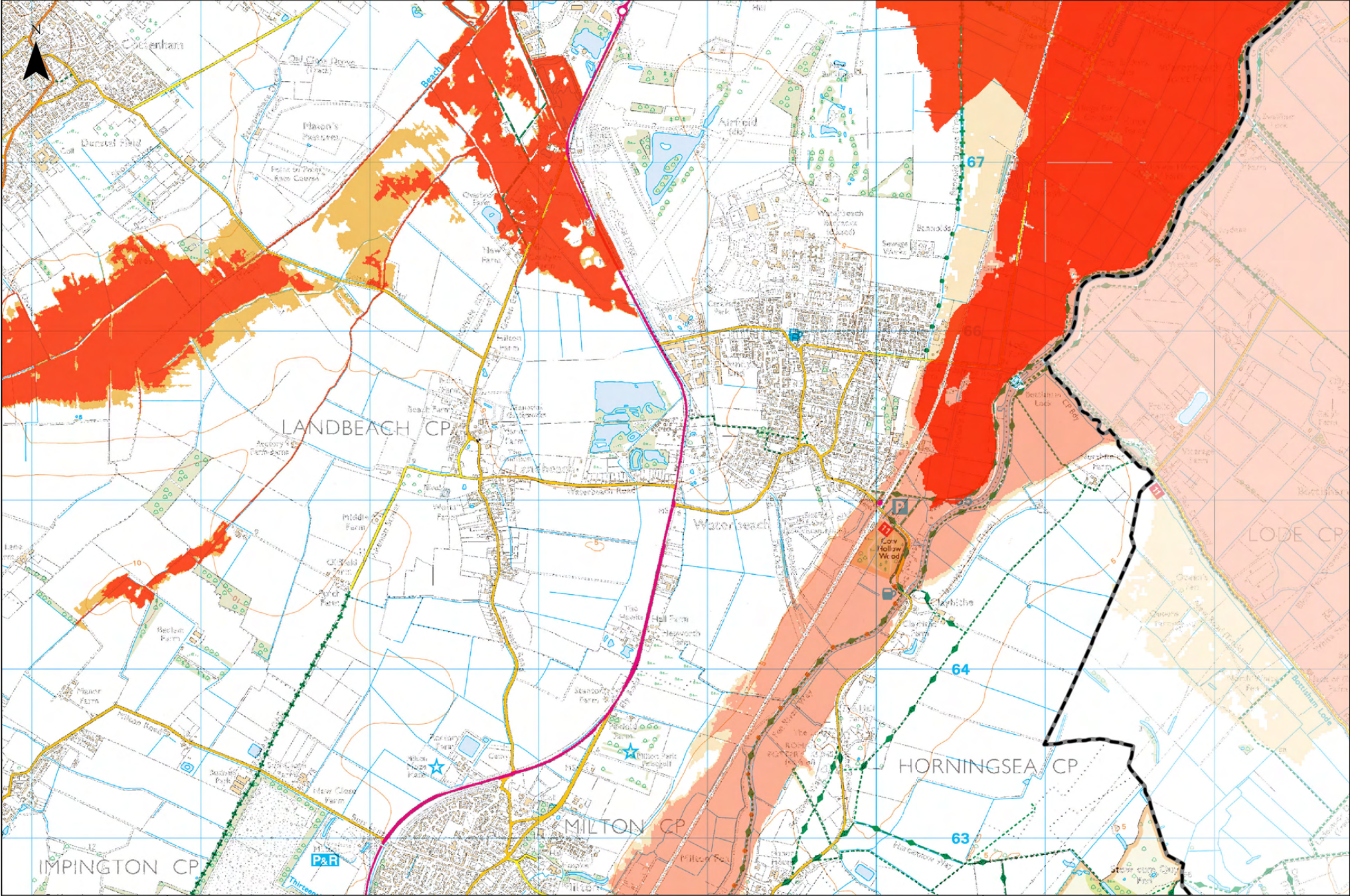
**Notes**

The Modelled Flood Extents map combines multiple model outputs to indicate modelled extents for the 1 in 100 year (1%) and 1 in 1000 year (0.1%) flood events. The model outputs were provided by the Environment Agency (EA). Models included in these are as follows:

- Bin Brook Model (2023)
- Cam Broadscale Model (2023)
- Cam Lodes (2023)
- Cam Rural Model (2014)
- Cam Urban Model (2023)
- Coldhams Brook Model (2013)
- Lower Ouse Model (2015)

The main type of model utilised by these is an ISIS-TuFLOW 1D-2D model.





Contains OS data © Crown Copyright and database right 2020

**Legend**

- Cambridge City Boundary
- South Cambridgeshire Boundary
- 100yr Modelled Flood Extent
- 1000yr Modelled Flood Extent

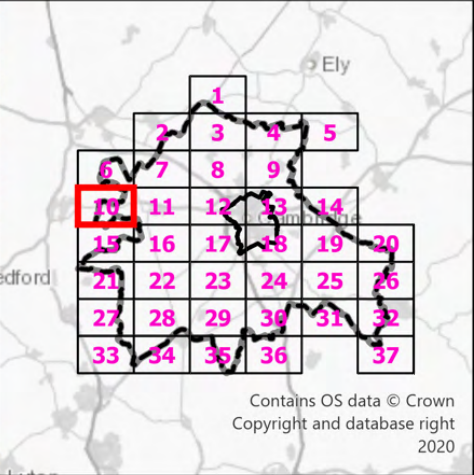
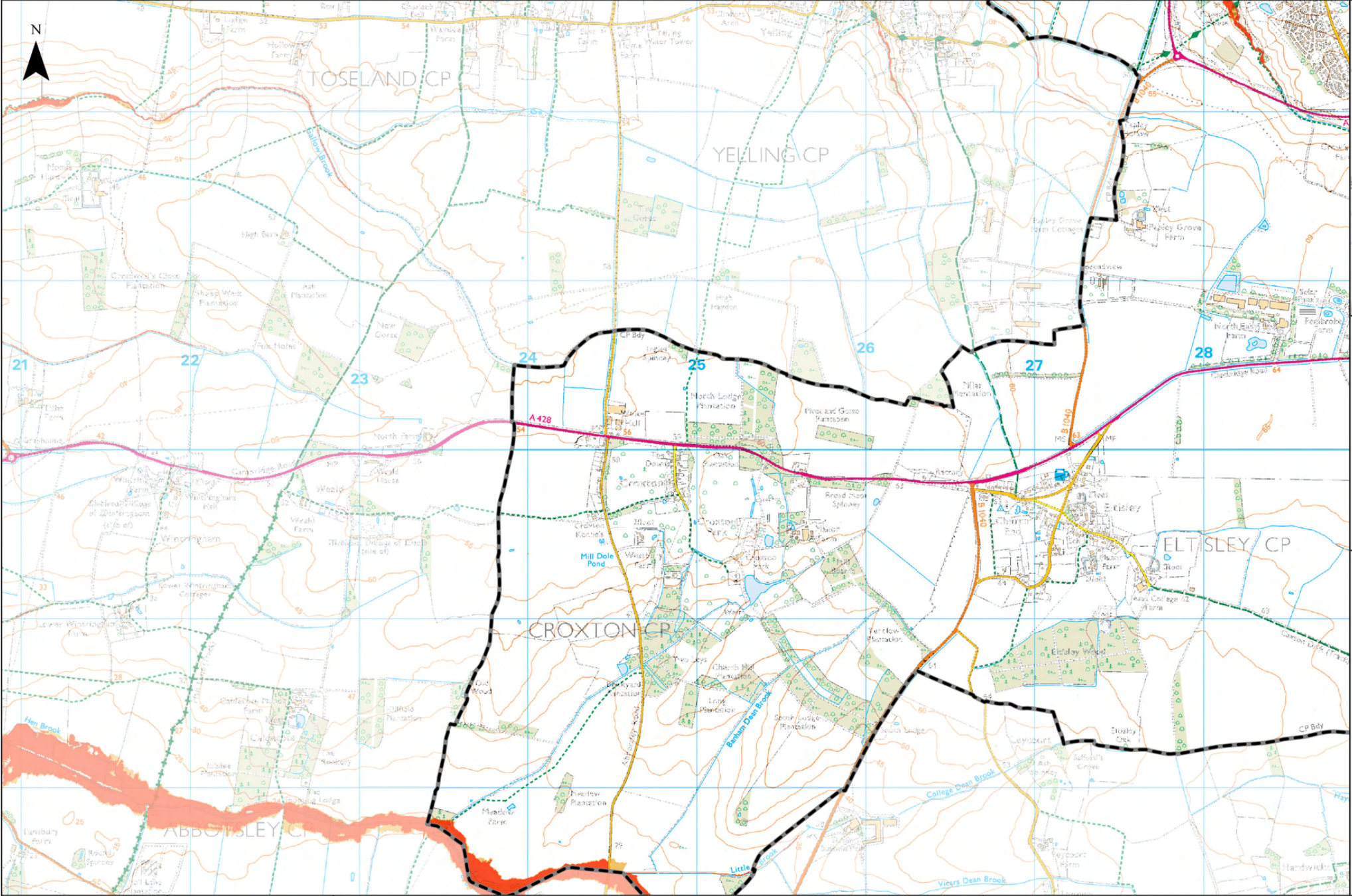
**Notes**

The Modelled Flood Extents map combines multiple model outputs to indicate modelled extents for the 1 in 100 year (1%) and 1 in 1000 year (0.1%) flood events. The model outputs were provided by the Environment Agency (EA). Models included in these are as follows:

- Bin Brook Model (2023)
- Cam Broadscale Model (2023)
- Cam Lodes (2023)
- Cam Rural Model (2014)
- Cam Urban Model (2023)
- Coldhams Brook Model (2013)
- Lower Ouse Model (2015)

The main type of model utilised by these is an ISIS-TuFLOW 1D-2D model.





Contains OS data © Crown Copyright and database right 2020

**Legend**

- Cambridge City Boundary
- South Cambridgeshire Boundary
- 100yr Modelled Flood Extent
- 1000yr Modelled Flood Extent

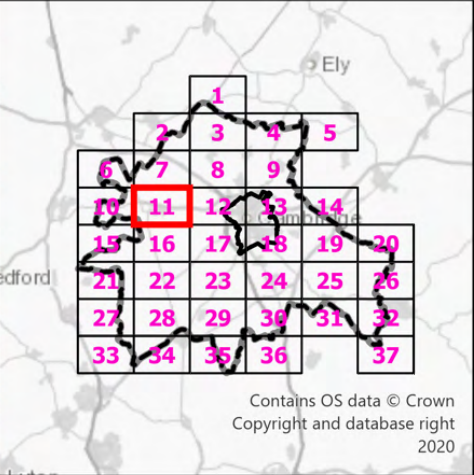
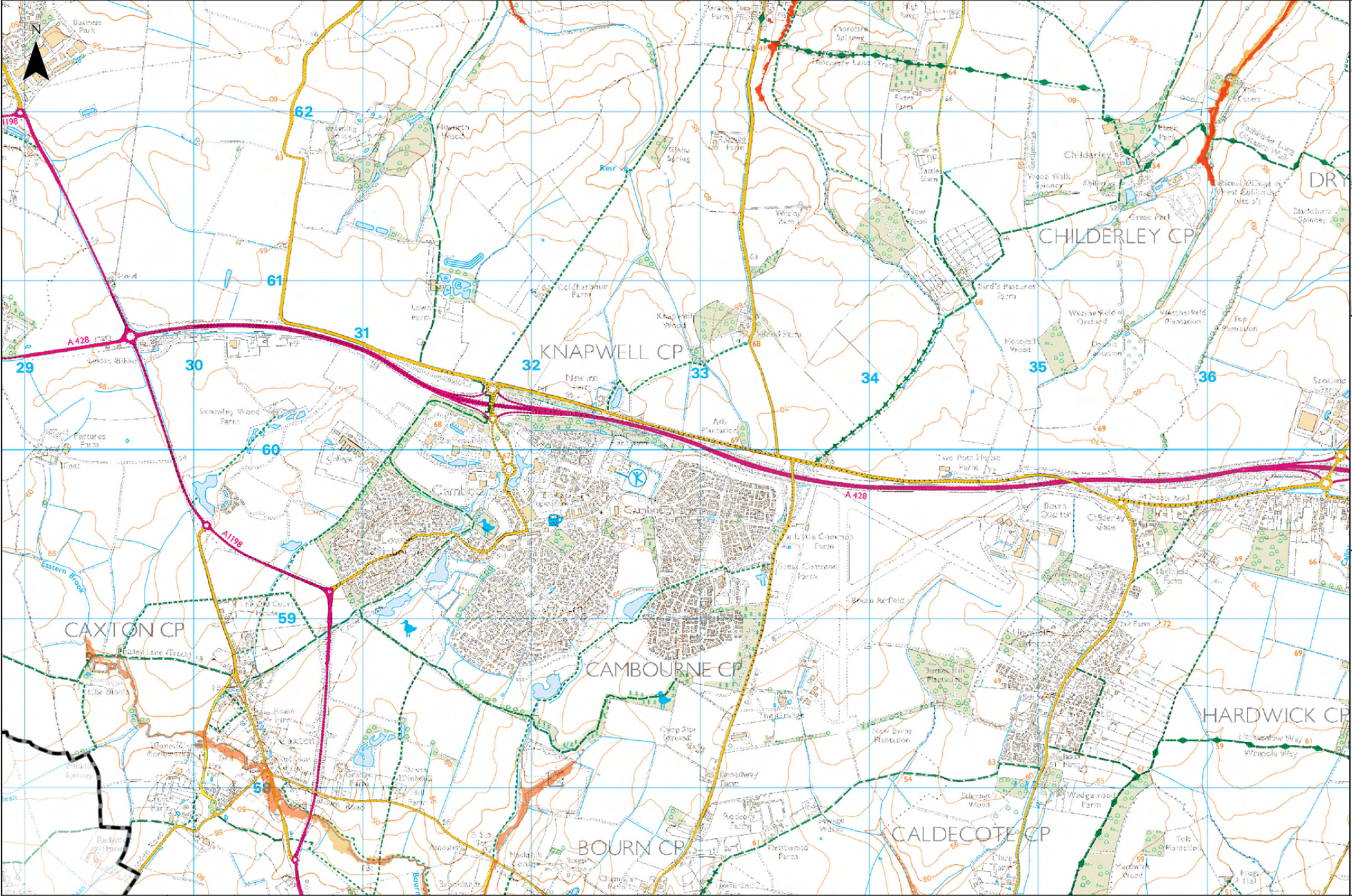
**Notes**

The Modelled Flood Extents map combines multiple model outputs to indicate modelled extents for the 1 in 100 year (1%) and 1 in 1000 year (0.1%) flood events. The model outputs were provided by the Environment Agency (EA). Models included in these are as follows:

- Bin Brook Model (2023)
- Cam Broadscale Model (2023)
- Cam Lodes (2023)
- Cam Rural Model (2014)
- Cam Urban Model (2023)
- Coldhams Brook Model (2013)
- Lower Ouse Model (2015)

The main type of model utilised by these is an ISIS-TuFLOW 1D-2D model.





Contains OS data © Crown Copyright and database right 2020

**Legend**

- Cambridge City Boundary
- South Cambridgeshire Boundary
- 100yr Modelled Flood Extent
- 1000yr Modelled Flood Extent

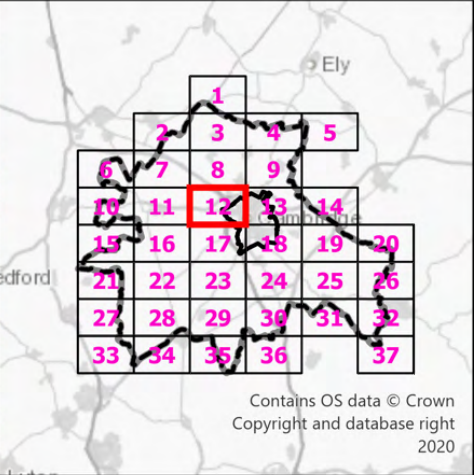
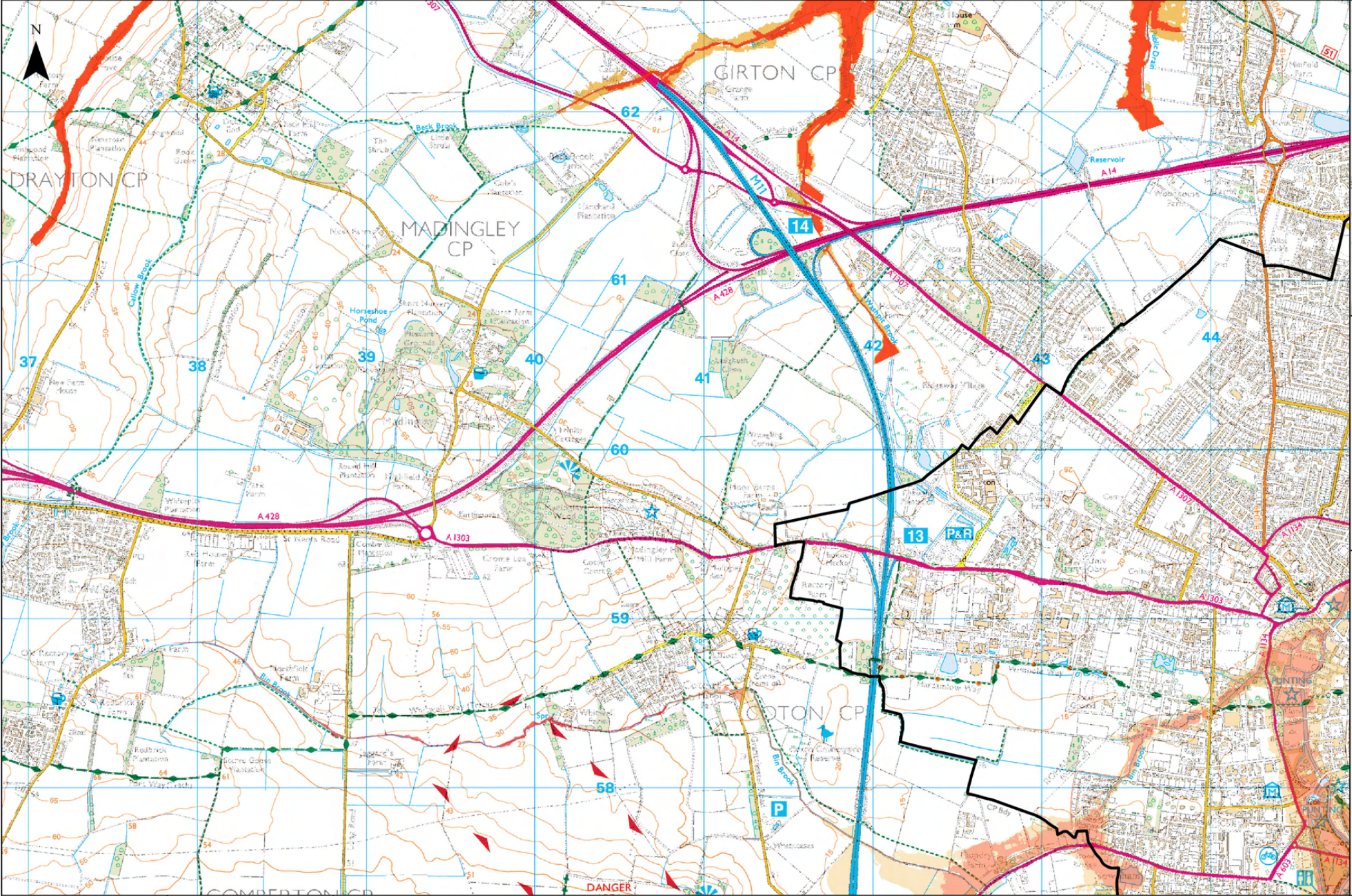
**Notes**

The Modelled Flood Extents map combines multiple model outputs to indicate modelled extents for the 1 in 100 year (1%) and 1 in 1000 year (0.1%) flood events. The model outputs were provided by the Environment Agency (EA). Models included in these are as follows:

- Bin Brook Model (2023)
- Cam Broadscale Model (2023)
- Cam Lodes (2023)
- Cam Rural Model (2014)
- Cam Urban Model (2023)
- Coldhams Brook Model (2013)
- Lower Ouse Model (2015)

The main type of model utilised by these is an ISIS-TuFLOW 1D-2D model.





Contains OS data © Crown Copyright and database right 2020

### Legend

- Cambridge City Boundary
- South Cambridgeshire Boundary
- 100yr Modelled Flood Extent
- 1000yr Modelled Flood Extent

### Notes

The Modelled Flood Extents map combines multiple model outputs to indicate modelled extents for the 1 in 100 year (1%) and 1 in 1000 year (0.1%) flood events. The model outputs were provided by the Environment Agency (EA). Models included in these are as follows:

- Bin Brook Model (2023)
- Cam Broadscale Model (2023)
- Cam Lodes (2023)
- Cam Rural Model (2014)
- Cam Urban Model (2023)
- Coldhams Brook Model (2013)
- Lower Ouse Model (2015)

The main type of model utilised by these is an ISIS-TuFLOW 1D-2D model.



## Greater Cambridge Integrated Water Management Study

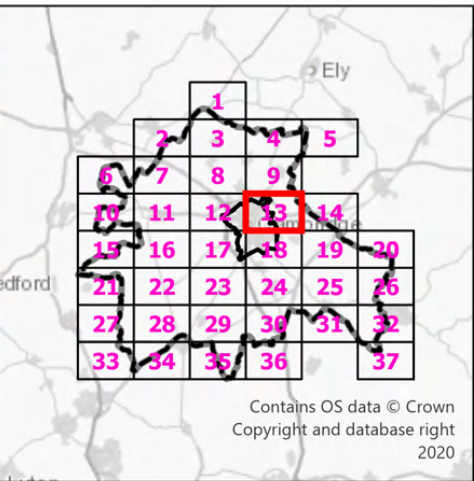
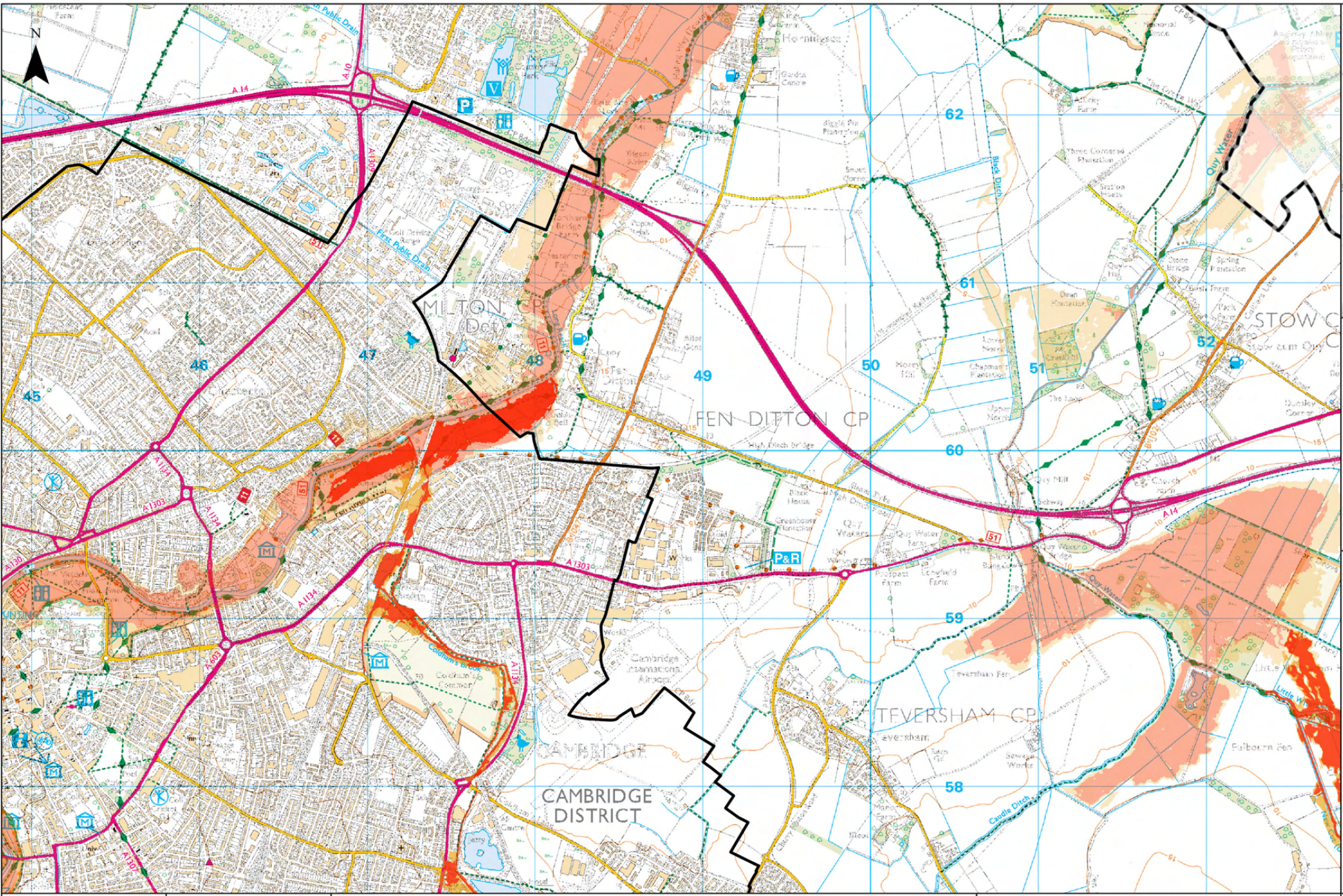
### Modelled Flood Extents

0 1 2 km

© Crown copyright and database rights 2025 OS AC0000810824  
Contains Environment Agency information © Environment Agency and/or database rights.  
May contain Ordnance Survey data © Crown copyright 2025 Ordnance Survey OS AC0000807064.

Sheet Number:	1:23,960 @ A3	Date: 01/07/2025
12 of 37	Drawn: OJ	Checked: MD
	Figure: 332612670/D3	Rev A





Contains OS data © Crown Copyright and database right 2020

**Legend**

- Cambridge City Boundary
- South Cambridgeshire Boundary
- 100yr Modelled Flood Extent
- 1000yr Modelled Flood Extent

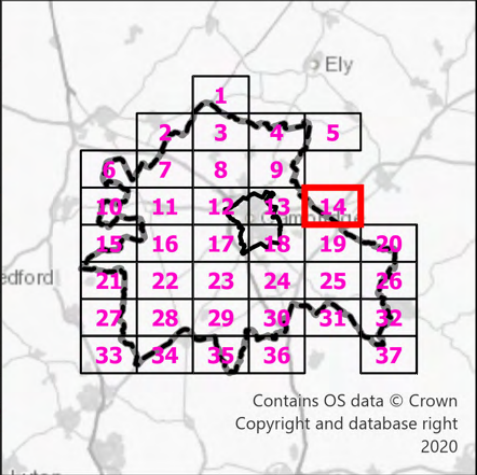
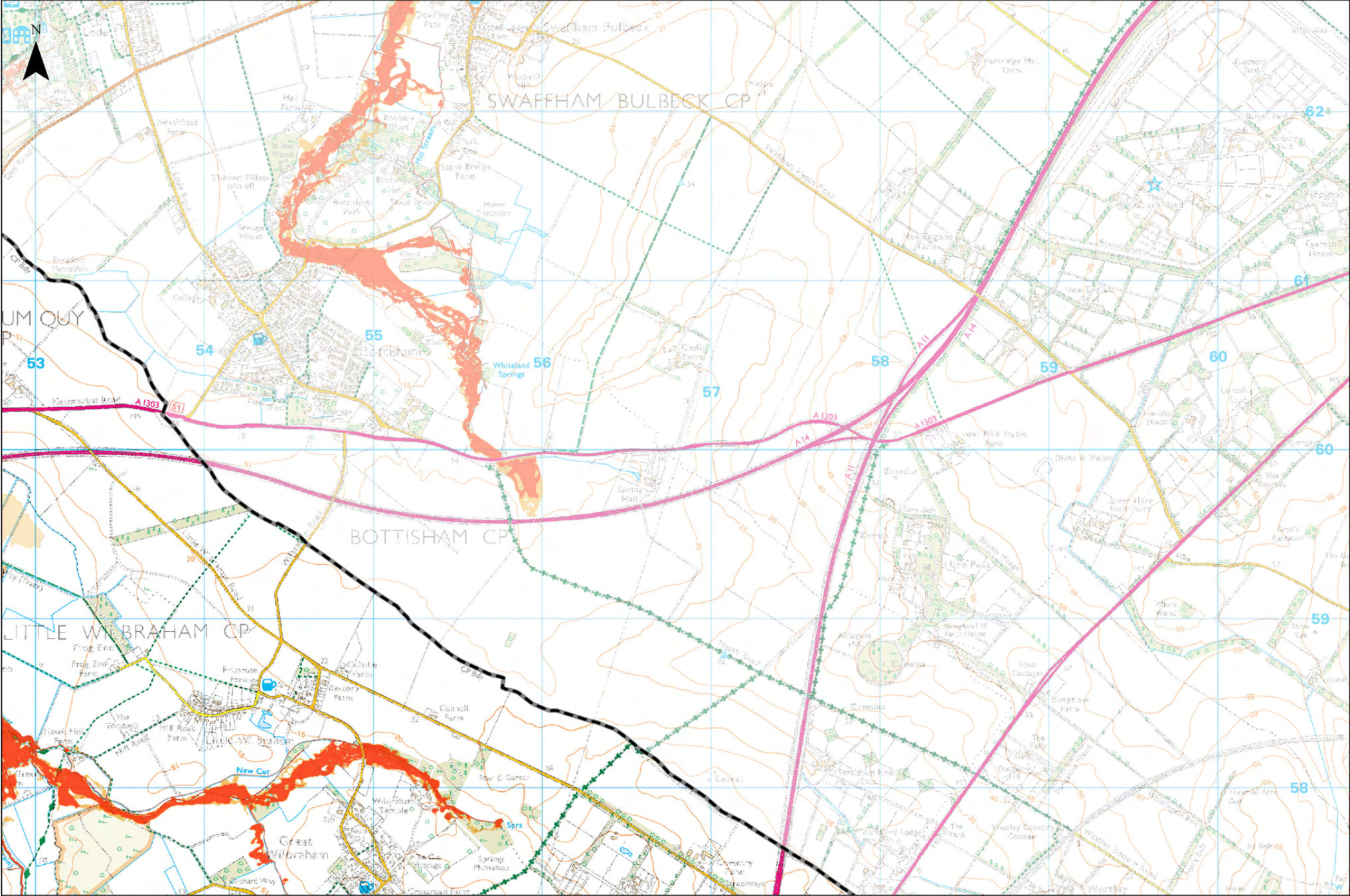
**Notes**

The Modelled Flood Extents map combines multiple model outputs to indicate modelled extents for the 1 in 100 year (1%) and 1 in 1000 year (0.1%) flood events. The model outputs were provided by the Environment Agency (EA). Models included in these are as follows:

- Bin Brook Model (2023)
- Cam Broadscale Model (2023)
- Cam Lodes (2023)
- Cam Rural Model (2014)
- Cam Urban Model (2023)
- Coldhams Brook Model (2013)
- Lower Ouse Model (2015)

The main type of model utilised by these is an ISIS-TuFLOW 1D-2D model.





Contains OS data © Crown Copyright and database right 2020

**Legend**

- Cambridge City Boundary
- South Cambridgeshire Boundary
- 100yr Modelled Flood Extent
- 1000yr Modelled Flood Extent

**Notes**

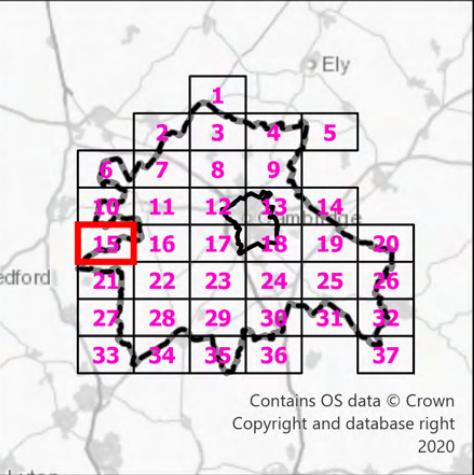
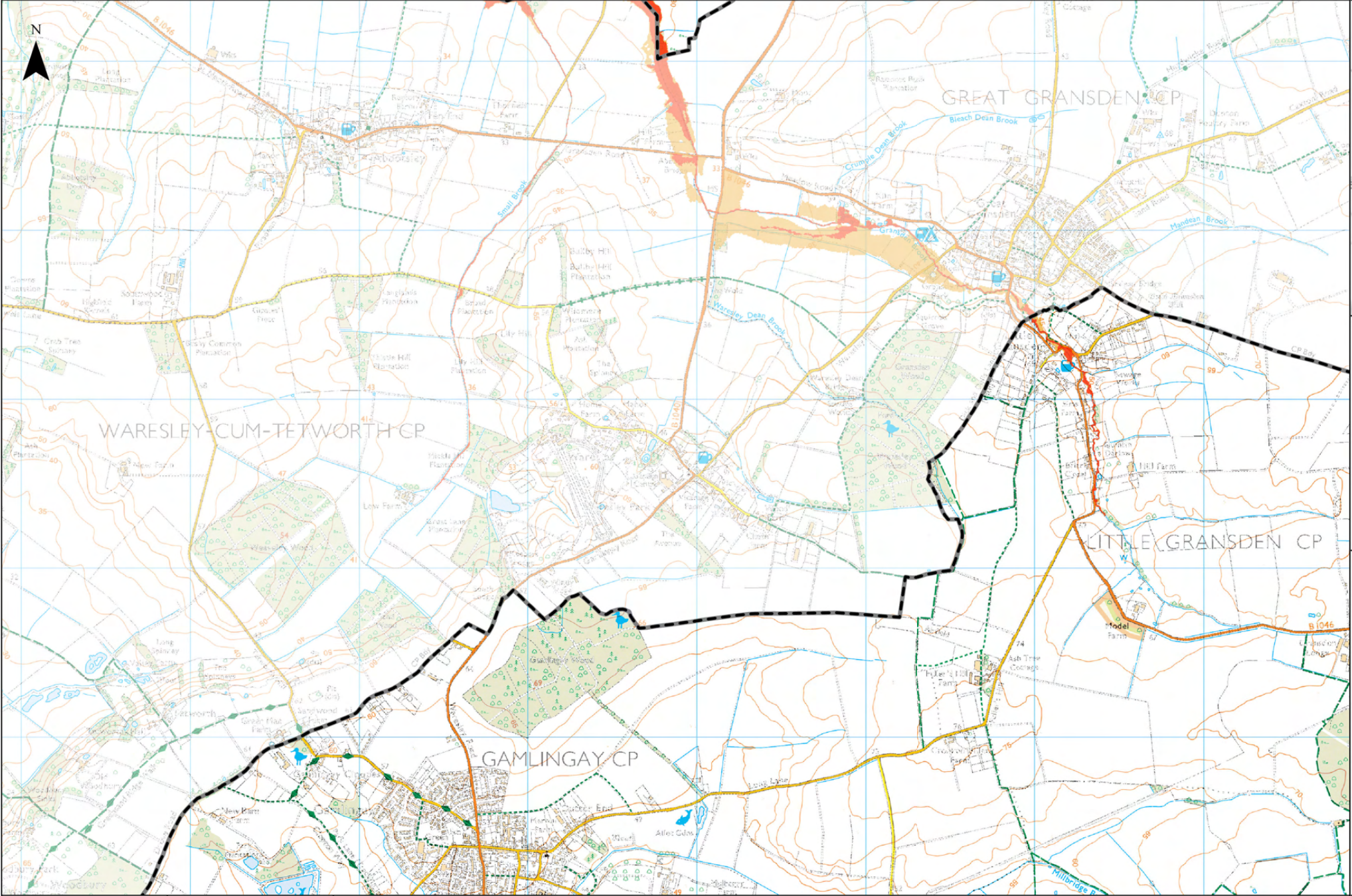
The Modelled Flood Extents map combines multiple model outputs to indicate modelled extents for the 1 in 100 year (1%) and 1 in 1000 year (0.1%) flood events. The model outputs were provided by the Environment Agency (EA). Models included in these are as follows:

- Bin Brook Model (2023)
- Cam Broadscale Model (2023)
- Cam Lodes (2023)
- Cam Rural Model (2014)
- Cam Urban Model (2023)
- Coldhams Brook Model (2013)
- Lower Ouse Model (2015)

The main type of model utilised by these is an ISIS-TuFLOW 1D-2D model.

<b>Sheet Number:</b>  14 of 37	1:23,960 @ A3	Date: 01/07/2025
	Drawn: OJ	Checked: MD
	Figure: 332612670/D3	Rev A





**Legend**

- Cambridge City Boundary
- South Cambridgeshire Boundary
- 100yr Modelled Flood Extent
- 1000yr Modelled Flood Extent

**Notes**

The Modelled Flood Extents map combines multiple model outputs to indicate modelled extents for the 1 in 100 year (1%) and 1 in 1000 year (0.1%) flood events. The model outputs were provided by the Environment Agency (EA). Models included in these are as follows:

- Bin Brook Model (2023)
- Cam Broadscale Model (2023)
- Cam Lodes (2023)
- Cam Rural Model (2014)
- Cam Urban Model (2023)
- Coldhams Brook Model (2013)
- Lower Ouse Model (2015)

The main type of model utilised by these is an ISIS-TuFLOW 1D-2D model.