

Viewpoint D1: Grantchester Road



General Description

View D1, a 90° static panorama from Grantchester Road, providing a broad perspective of the city's skyline from a roadside southeast of Cambridge. The image is annotated to indicate key points in the city's skyline.

Key Elements and Sensitivities

- This mostly rural view looks east, over the M11. Heavy traffic along this road is a major experiential component of the landscape, with large trucks blocking elements of the rural midground west of Cambridge. Elements of the historic core are visible above the treed skyline, though several trees in the near midground block large portions of the view. The background to these views, and the foreground permitting, are highly sensitive to change.
- Distant views of St. Luke's Church are visible from here, framed between dips in the trees. This is a rare view, as the spire of St. Luke's is often blocked by midground elements within the city. The same is also true of Holy Trinity Church, which sits relatively inconspicuously behind the treed midground on the far right side of the image. Highly sensitive to change.
- The Cambridge University Library is among the only non-religious buildings on the skyline. The tower, as well as the visible spire of St. John's Chapel, are commonly observed from the western outskirts of Cambridge, suggesting they are among the most visually magnitudinous buildings from that angle. The views of the building are moderately sensitive to change.
- Certain regions of the predominantly undisturbed tree-lined horizon exhibit a moderate degree of sensitivity to isolated developments disrupting the continuity of the skyline. Conversely, there are other areas characterised by a predominantly rural environment. The left portion of the image is predominantly concealed by a midground dominated by trees, which in turn reveals only a rural landscape beyond. Such areas are less sensitive to change.
- Elements of the Science Park interrupt the treed midground. These buildings are prominent, largely due to the contrast between their bright, warm hues and the blue sky behind them.

Viewpoint D2: Grantchester Road

The Church of Our Lady and the English Martyrs

King's College Chapel



Rural treed skyline

Modern developments /
Science Park

Treed skyline with limited development.

Historic
Core

Treed skyline with limited development.



Extent of View D1

Extent of View D2

General Description

Top: View D2, a 90° static panorama from Grantchester Road, providing a broad perspective of the city's skyline from a roadside southeast of Cambridge. The image is annotated to indicate key points in the city's skyline.

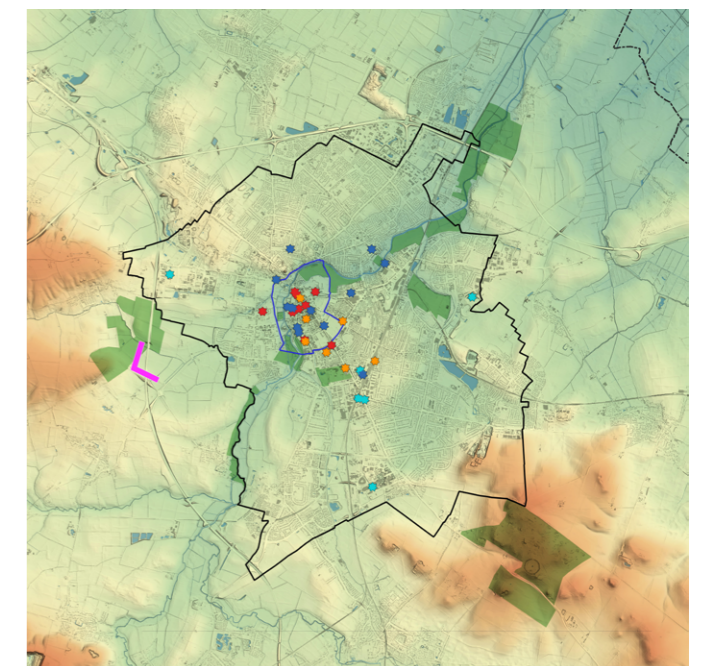
Bottom: A 180° static panorama from the same viewpoint, annotated to point out key elements within the landscape. The extent of views D1 and D2, as well as the silhouetted enlargements on the previous page, are annotated.

Right: A map highlighting the position of the viewpoint in relation to Cambridge.

Key Elements and Sensitivities

- This mostly rural view looks east, over the M11. Heavy traffic along this road is a major experiential component of the landscape, with large trucks blocking elements of the rural midground west of Cambridge. Elements of the historic core are visible above the treed skyline, though several trees in the near midground block large portions of the view. The background to these views, and the foreground permitting, are highly sensitive to change.
- The spire of the Church of Our Lady and the English Martyrs is the only church to break the skyline. However, this is mostly hidden from view behind midground trees. The spire, as well as the tower of the University Library, are commonly observed from the western outskirts of Cambridge, suggesting they are among the most visually magnitudinous buildings from that angle. View of the building are moderately sensitive to change.
- Minor distant views of King's College Chapel are visible from here, framed between dips in the trees. Given the low visual magnitude of the feature, heavy traffic would significantly disrupt views. Moderate sensitivity.

- ▭ Cambridge District
- ▭ Open Spaces
- Landmark Buildings
 - ★ Key Historic Landmark
 - ★ Other Historic Landmark
 - ★ Modern Landmark
 - ★ Intrusive Landmark
- Topography
 - 10
 - 0
 - 10
 - 20
 - 40
 - 80
 - 160+



Strategic Viewpoint D

Viewpoint D: Grantchester Road



1



St. John's Chapel



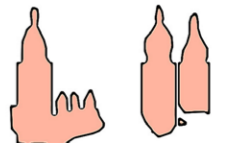
University Library



Holy Trinity Church



Museum of Technology



King's College Chapel

Non-Designated
 Grade I
 Grade II
 Scheduled

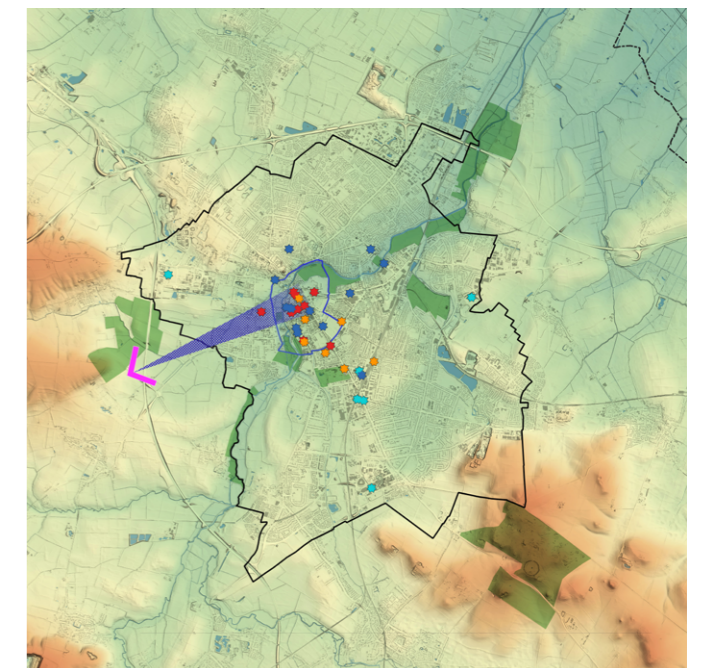
General Description

Top: A map highlighting the position of the enlargement in relation to Cambridge, denoted by a blue view cone. An enlargement of viewpoint D, centred on the historic core, visualising the visual magnitude of the numerous towers within the historic core.

Right: A map highlighting the position of the enlargement in relation to Cambridge, denoted by a blue view cone.

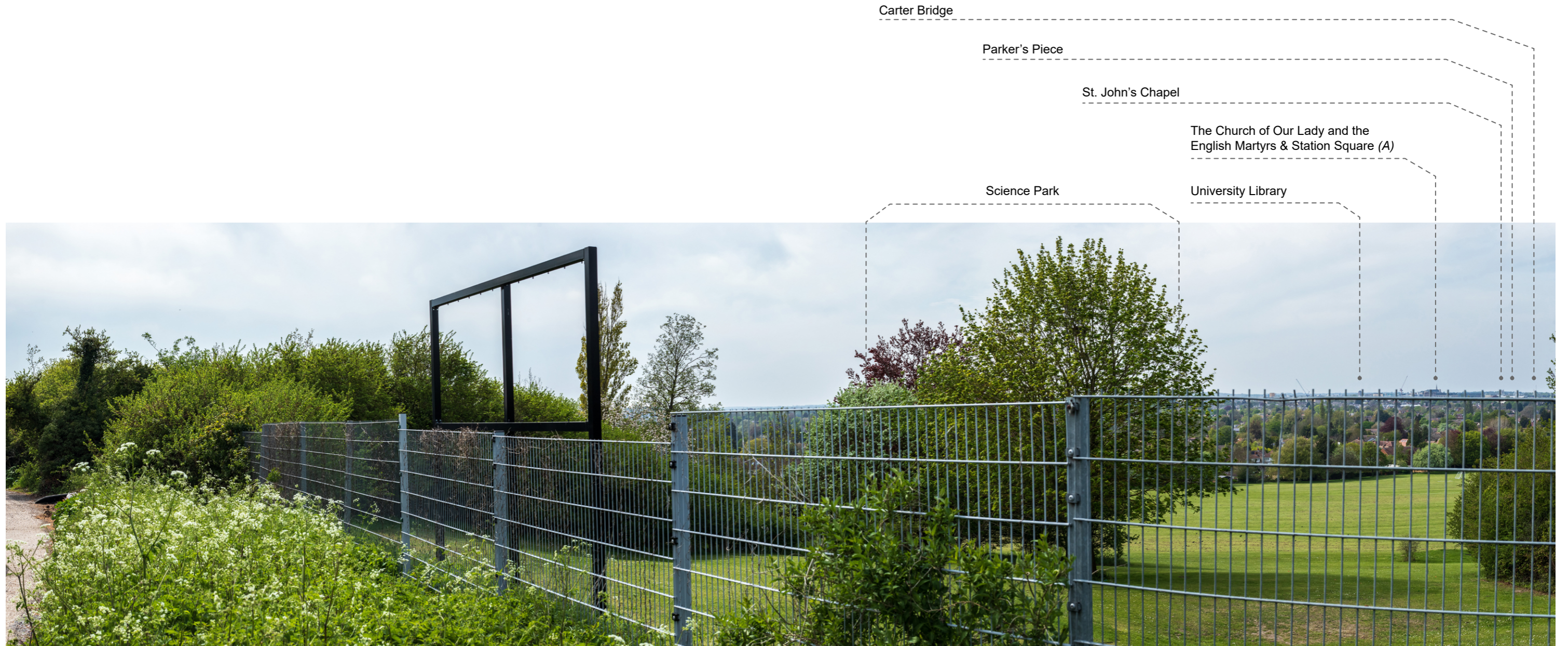
See previous page for the scale of each enlargement.

Cambridge District
 Extent of Enlargement (view cone)
 Open Spaces
Landmark Buildings
★ Key Historic Landmark
★ Other Historic Landmark
★ Modern Landmark
★ Intrusive Landmark
Topography
 -10
 0
 10
 20
 40
 80
 160+



Strategic Viewpoint D

Viewpoint E1: Limekiln Road



General Description

View E1, a 90° static panorama from a lay-by just off Limekiln Road, overlooking the grounds of Netherall School. The image is annotated to indicate key points in the city's skyline.

Key Elements and Sensitivities

- The viewpoint sits in a lay-by off Limekiln Road, to the southeast of Cambridge. The fence in the immediate foreground, as well as the majority of the midground and its treed areas, belong to the school yard of Netherall School. The fence, in particular, blocks significant portions of the view.
- The Historic Core features prominently in parts of the view, with key elements breaking the skyline. The Cambridge University Library is prominent, breaking the skyline in relative isolation. To the right of this, a dense collection of buildings is visible. This includes St. John's Chapel, the Parker's Piece Ferris wheel, Carter Bridge, and The Church of Our Lady and the English Martyrs. The Church of Our Lady and the English Martyrs is the tallest of the collection. The background of this region is highly sensitive to change.
- Station Square, with its collection of large hotels (the broad side of the Ibis Hotel in particular, {A}), is highly conspicuous in the view, blocking significant portions of the Historic Core.
- The majority of the skyline is largely wooded, often with a distant rural backdrop. The foreground, in particular, is heavily treed. The foreground trees do frame the Historic Core to an extent while blocking the Science Park to the west. This area is moderately sensitive to change.