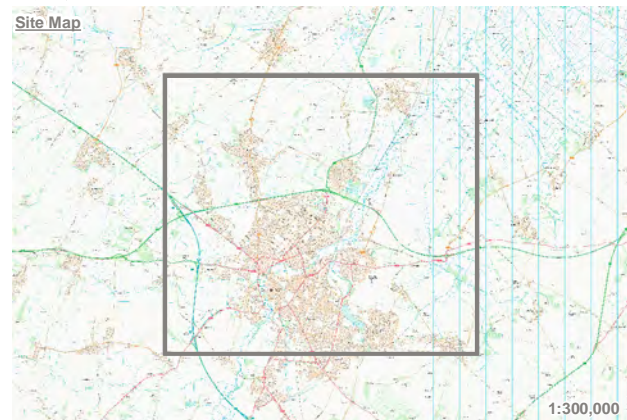


KEY
 Site Boundary



Reproduced by permission of Ordnance Survey on behalf of Her Majesty's Stationery Office.
Contains OS data © Crown Copyright and database right 2017. All rights reserved.
Reproduced from Ordnance Survey digital map data © Crown copyright 2018.
All rights reserved. Licence number 0100031673



Rev	Description	Drawn	Approved	Date



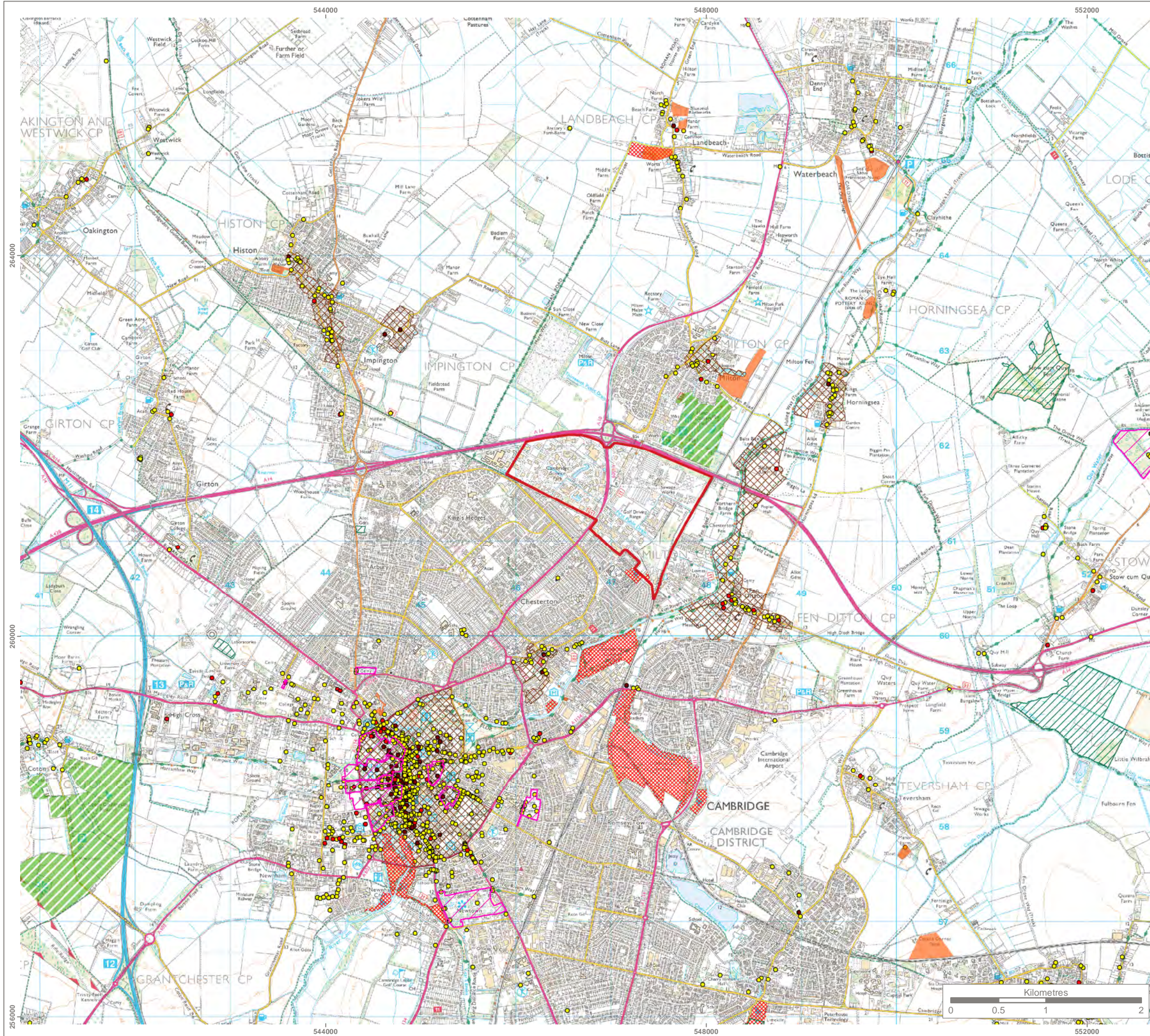
Genesis Centre, Birchwood Science Park, Warrington WA3 7BH
Tel 01925 844004 e-mail tep@tep.uk.com www.tep.uk.com

Project
North East Cambridge LCVIA

Title
Figure 1 - Site Location and Study Area

Drawing Number
G7336.007

Drawn	Checked	Approved	Scale	Date
RE	JS	RA	1:40,000 @ A3	18/06/2019



KEY

Site Boundary

Environmental Designations

Ancient Woodland

Country Park

National Nature Reserve

Local Nature Reserve

Ramsar

Special Areas of Conservation

Sites of Special Scientific Interest

Heritage Designations

Scheduled Monument

Registered Park and Garden

Grade I Listed Building

Grade II* Listed Building

Grade II Listed Building

Conservation Area

Note

This map contains data from the following sources:

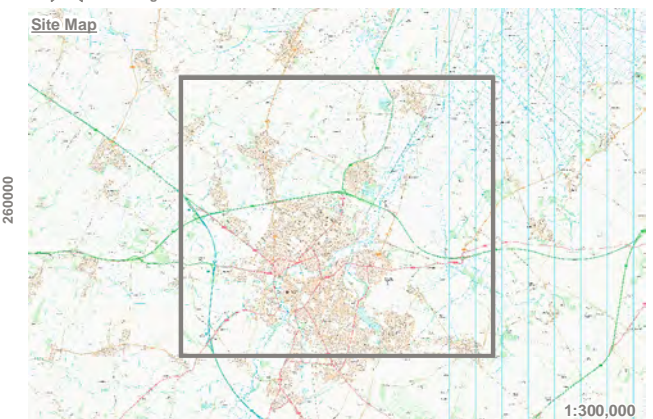
- Historic England
© Historic England [2018]. Contains Ordnance Survey data
© Crown copyright and database right [2018] The Historic England GIS Data contained in this material was obtained on [11/2018].
The most publicly available up to date Historic England GIS Data can be obtained from <http://www.HistoricEngland.org.uk>.
- Natural England
© Natural England copyright. Contains Ordnance Survey data
© Crown copyright and database right [2018]



Reproduced by permission of Ordnance Survey on behalf of Her Majesty's Stationery Office.

Contains OS data © Crown Copyright and database right 2017. All rights reserved. Reproduced from Ordnance Survey digital map data © Crown copyright 2018. All rights reserved. Licence number 0100031673

Site Map



Rev	Description	Drawn	Approved	Date



THE ENVIRONMENT PARTNERSHIP

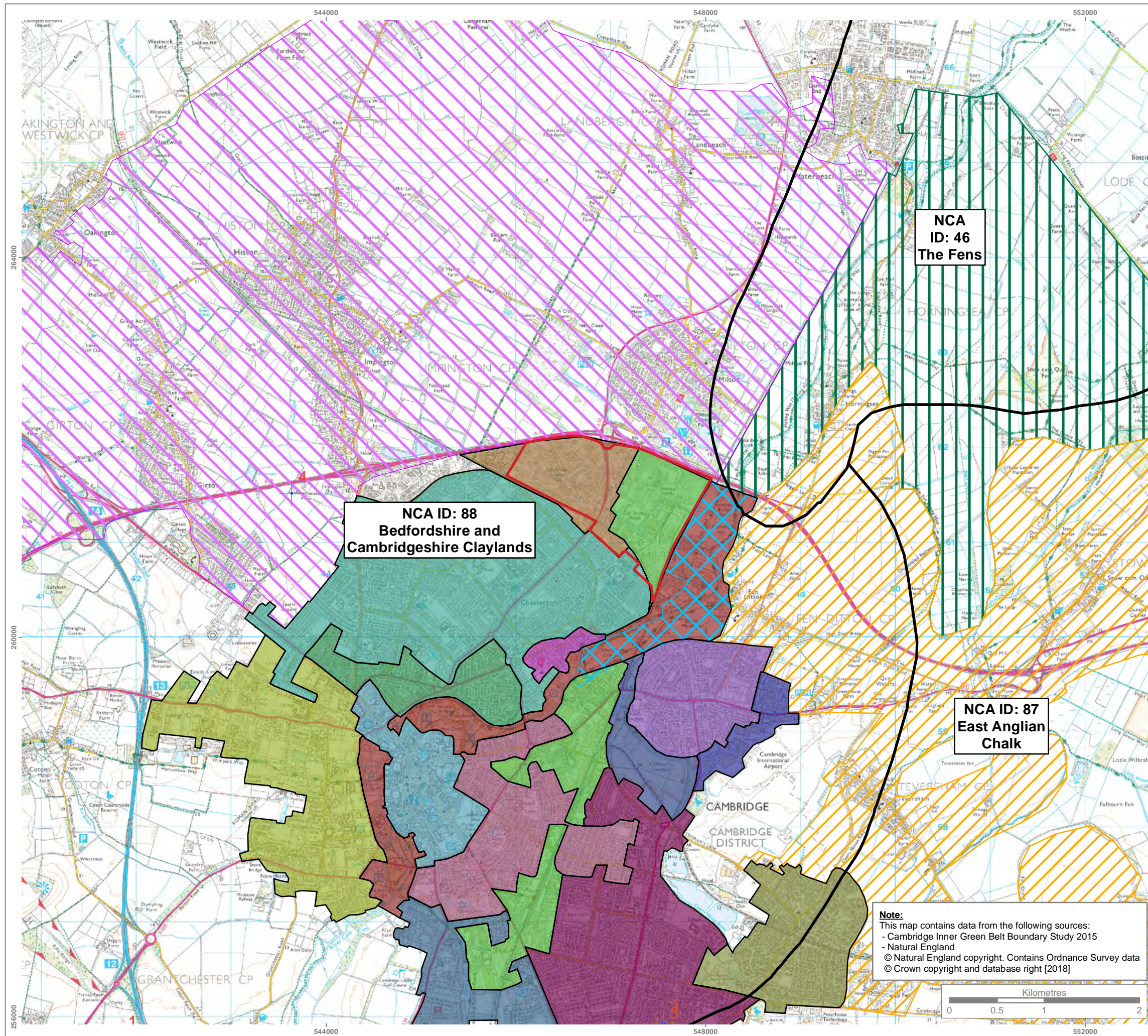
Genesis Centre, Birchwood Science Park, Warrington WA3 7BH
Tel 01925 844004 e-mail tep@tep.uk.com www.tep.uk.com

Project
North East Cambridge LCVIA

Title
Figure 2 - Environmental and Landscape Designations

Drawing Number
G7336.001

Drawn	Checked	Approved	Scale	Date
RE	JS	RA	1:40,000 @ A3	18/06/2019



KEY

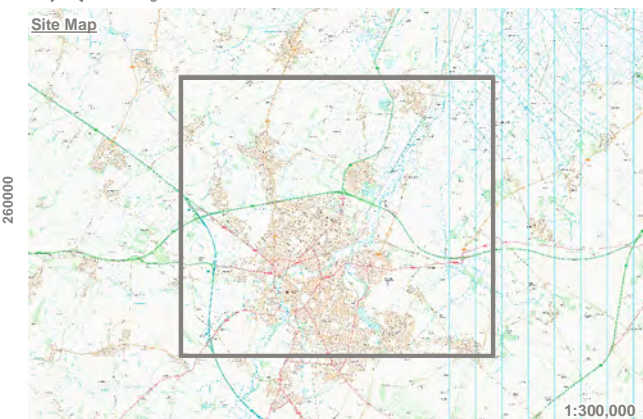
- Site Boundary
- National Character Area

Cambridge Inner Green Belt Boundary Study 2015

Townscape Character Area

- 1A - Cambridge Historic Core
- 1B - Chesterton Village
- 2 - West Cambridge
- 3A - River Cam Corridor
- 3B - Coldhams Common
- 4A - New Chesterton
- 4B - Newtown, Mill Road, Barnwell and Romsey Town
- 5A - Cambridge Science Park and St Johns Innovation Park
- 5B - Railway Corridor
- 5C - Cambridge Airport
- 6A - Trumpington and Hills Road
- 6B - South-eastern Suburban Estates
- 6C - Newmarket Road Suburban Estates
- 7A - Northern Suburban Estates
- 7B - Cherry Hinton
- 1A - Waterbeach - Lode Fen LCA
- 2A - Western Fen Edge LCA
- 2B - Eastern Fen Edge LCA
- 4A - River Cam Corridor LCA

Reproduced by permission of Ordnance Survey on behalf of Her Majesty's Stationery Office.
Contains OS data © Crown Copyright and database right 2017. All rights reserved.
Reproduced from Ordnance Survey digital map data © Crown copyright 2018.
All rights reserved. Licence number 0100031673



Rev	Description	Drawn	Approved	Date



Genesis Centre, Birchwood Science Park, Warrington WA3 7BH
Tel 01925 844004 e-mail tep@tep.uk.com www.tep.uk.com

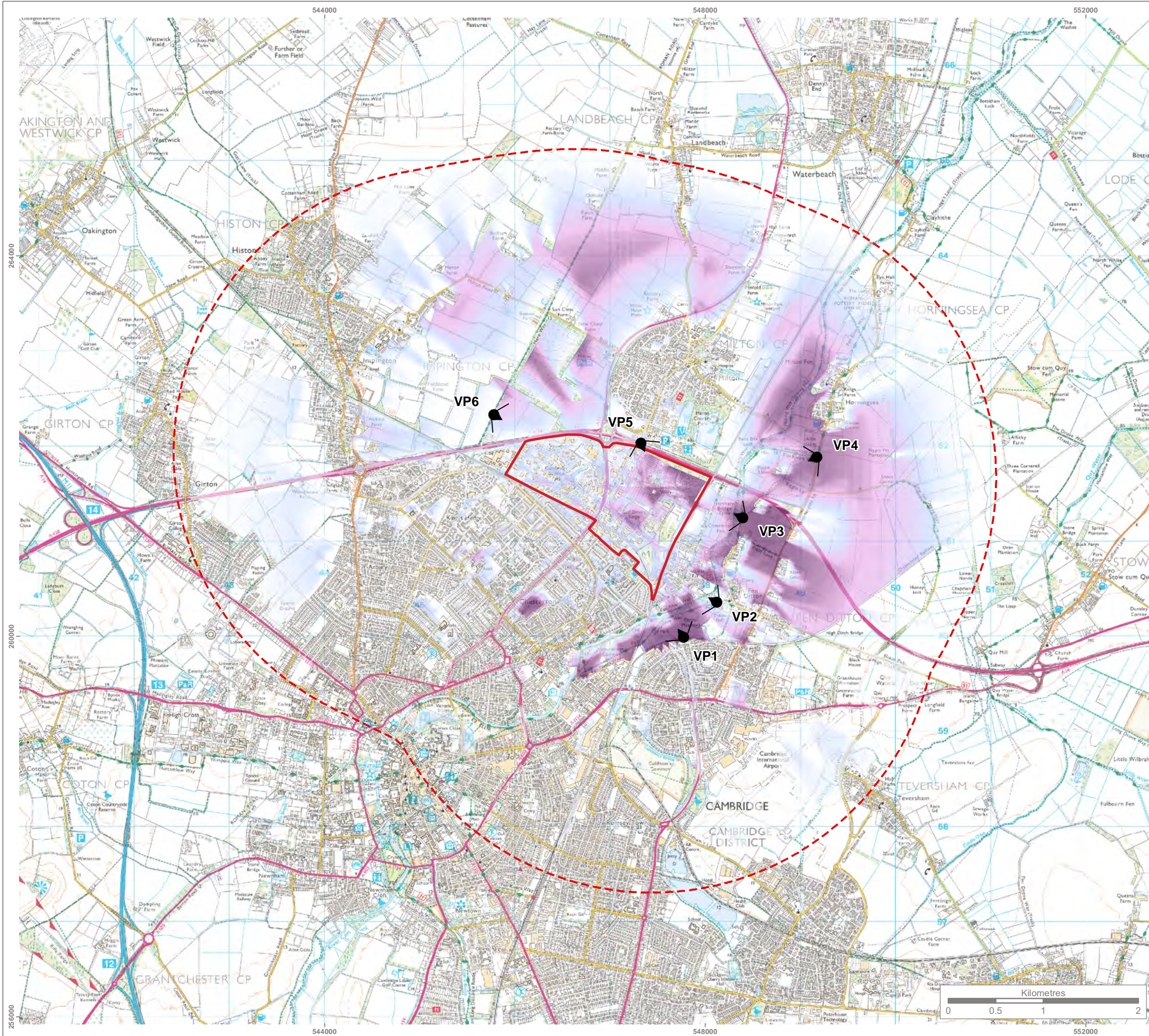
Project
North East Cambridge LCVA

Title
Figure 3 - Landscape and Townscape Character

Drawing Number
G7336.006

Drawn	Checked	Approved	Scale	Date
RE	JS	RA	1:40,000 @ A3	18/06/2019

Note:
This map contains data from the following sources:
- Cambridge Inner Green Belt Boundary Study 2015
- Natural England
© Natural England copyright. Contains Ordnance Survey data
© Crown copyright and database right [2018]



KEY

- Site Boundary
- Site Boundary 3km Buffer
- Proposed Viewpoint Location

Zone of Theoretical Visual Influence

- Higher number of points of the proposed development theoretically visible
- Lower number of points of the proposed development theoretically visible

NOTE

This Zone of Theoretical Visibility (ZTV) mapping has been generated using Esri ArcGIS Spatial Analyst extension. The digital terrain model (DTM) has been derived from the Environment Agency's LIDAR Tiles dataset with an accuracy in the order of $\pm 1.0m$. Earth curvature has been included in the ZTV calculation and refraction of light has been applied using ESRI default settings. The ZTV mapping has been generated from a viewing height of 2m above ground level. This falls within recommendations by "Visual Representation of Windfarms" prepared for Scottish Natural Heritage (SNH) July 2014 - Version 2.

The use of ZTV mapping at this stage is limited and the following assumptions should be noted:

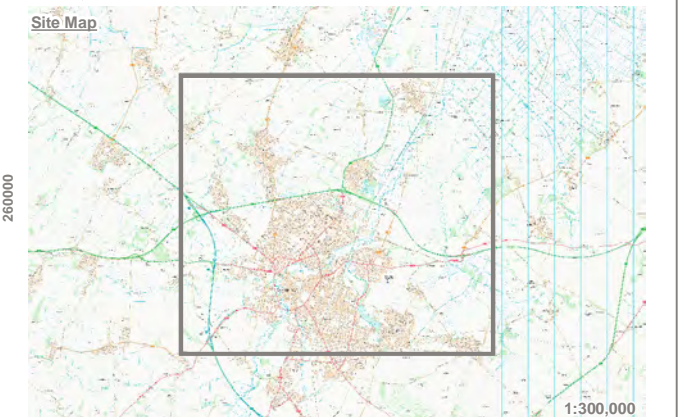
- The ZTV has been generated from points at 100m grid based intervals within this area. The elevations of each point within the site have been based on the maximum height of proposed buildings being 3 and 4 storeys. The ZTV has also been generated for the approved planning applications for both the hotel and office in Cambridge North. Points have been created at the corners of each building with the elevations derived from the planning applications.
- The ZTV mapping accounts for the screening effect of settlements and woodland blocks using height values derived from LIDAR DSM Tiles for buildings and 10m for woodland based on OS Open Map Local data (November 2018). The ZTV mapping does not account for the localised screening effects of vegetation (i.e. hedgerows, individual trees, small tree groups or scrub) beyond are as immediately adjacent to the development.
- The ZTV mapping does not indicate potential visual effects or show the likely significance of effects. It shows potential theoretical visibility only. The ZTV has been produced for the purpose of informing 'on the ground' visual assessment.
- The ZTV mapping has been generated up to 3km from the site boundary.

Reproduced by permission of Ordnance Survey on behalf of Her Majesty's Stationery Office.



Contains OS data © Crown Copyright and database right 2017. All rights reserved.
Contains EA data © Environment Agency copyright and database right 2017. All rights reserved.
Reproduced from Ordnance Survey digital map data © Crown copyright 2018. All rights reserved. Licence number 0100031673

Site Map



Rev	Description	Drawn	Approved	Date



THE ENVIRONMENT PARTNERSHIP

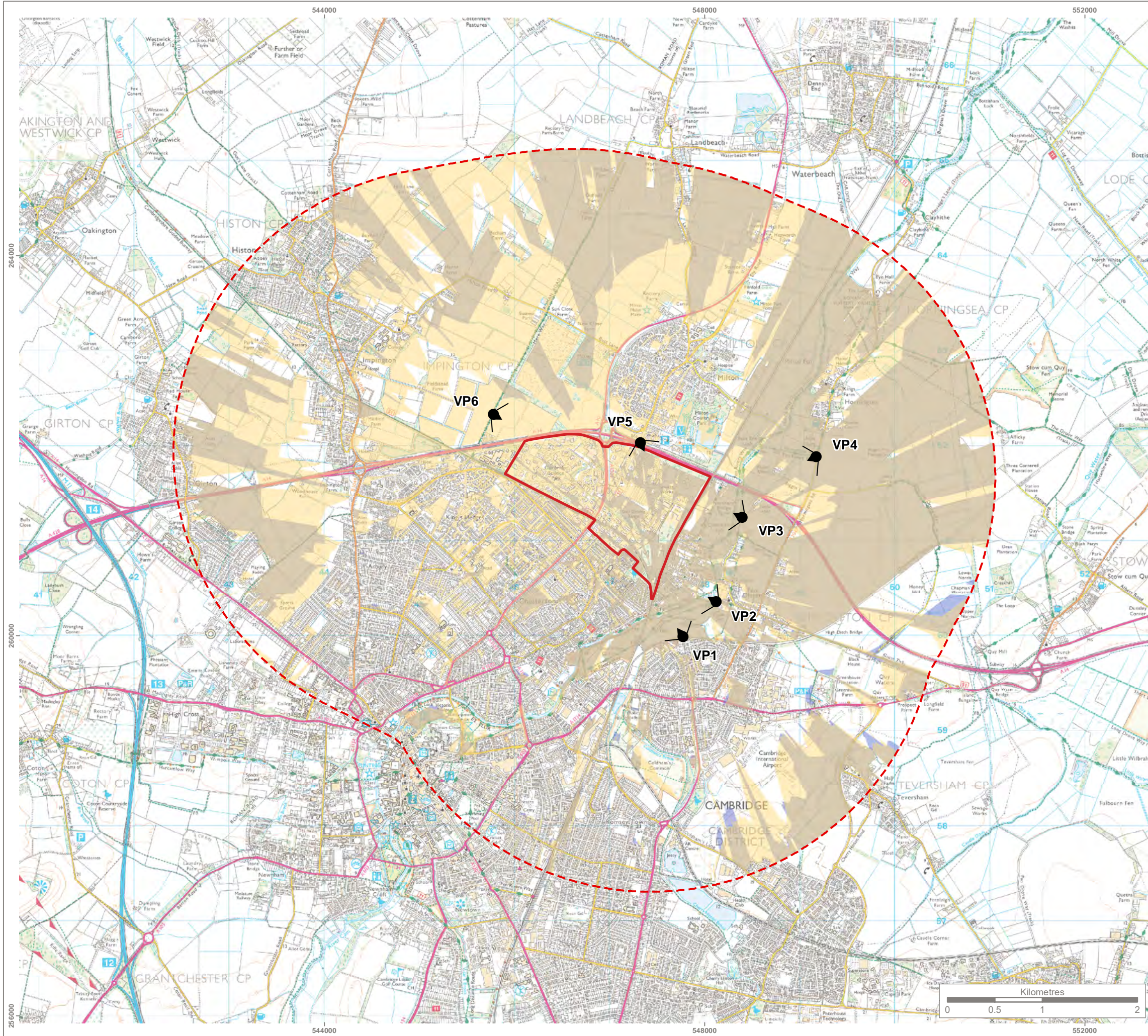
Genesis Centre, Birchwood Science Park, Warrington WA3 7BH
Tel 01925 844004 e-mail tep@tep.uk.com www.tep.uk.com

Project
North East Cambridge LCVIA

Title
Figure 4.1 - Zone of Theoretical Visibility Screened Scenario (A) and Viewpoint Locations

Drawing Number
G7336.002

Drawn	Checked	Approved	Scale	Date
JS	RA	RA	1:40,000 @ A3	18/06/2019



KEY

- Site Boundary
- Site Boundary 3km Buffer

Proposed Viewpoint Location

- Approved Planning Application for Hotel and Offices and Points within the Site Visible
- Only Points within the Site Visible
- Only Approved Planning Application for Hotel and Offices Visible

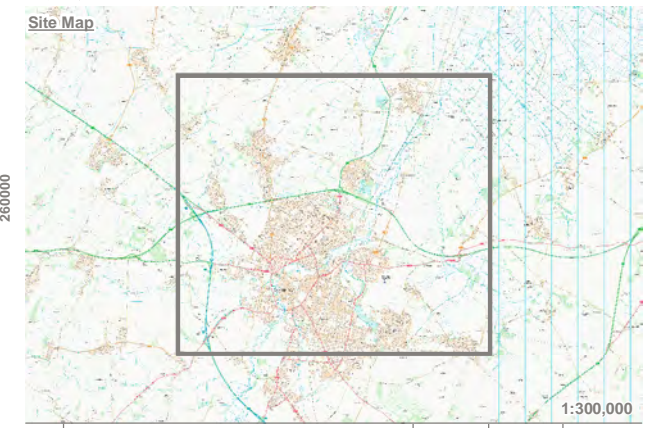
NOTE

This Zone of Theoretical Visibility (ZTV) mapping has been generated using Esri ArcGIS Spatial Analyst extension. The digital terrain model (DTM) has been derived from the Environment Agency's LIDAR Tiles dataset with an accuracy in the order of $\pm 1.0m$. Earth curvature has been included in the ZTV calculation and refraction of light has been applied using ESRI default settings. The ZTV mapping has been generated from a viewing height of 2m above ground level. This falls within recommendations by "Visual Representation of Windfarms" prepared for Scottish Natural Heritage (SNH) July 2014 - Version 2.

The use of ZTV mapping at this stage is limited and the following assumptions should be noted:

- The ZTV has been generated from points at 100m grid based intervals within this area. The elevations of each point within the site have been based on the maximum height of proposed buildings being 3 and 4 storeys. The ZTV has also been generated for the approved planning applications for both the hotel and office in Cambridge North. Points have been created at the corners of each building with the elevations derived from the planning applications.
- The ZTV mapping accounts for the screening effect of settlements and woodland blocks using height values derived from LIDAR DSM Tiles for buildings and 10m for woodland based on OS Open Map Local data (November 2018). The ZTV mapping does not account for the localised screening effects of vegetation (i.e. hedgerows, individual trees, small tree groups or scrub) beyond are as immediately adjacent to the development.
- The ZTV mapping does not indicate potential visual effects or show the likely significance of effects. It shows potential theoretical visibility only. The ZTV has been produced for the purpose of informing 'on the ground' visual assessment.
- Where visibility is recorded, it is important to note that it does not indicate the number or extent of points visible, and could be comprised of any part and number of the points generated across the site.
- The ZTV mapping has been generated up to 3km from the site boundary.

Reproduced by permission of Ordnance Survey on behalf of Her Majesty's Stationery Office.
Contains OS data © Crown Copyright and database right 2017. All rights reserved.
Contains EA data © Environment Agency copyright and database right 2017. All rights reserved.
Reproduced from Ordnance Survey digital map data © Crown copyright 2018. All rights reserved. Licence number 0100031673



Rev	Description	Drawn	Approved	Date

TEP | **THE ENVIRONMENT PARTNERSHIP**
Genesis Centre, Birchwood Science Park, Warrington WA3 7BH
Tel 01925 844004 e-mail tep@tep.uk.com www.tep.uk.com

Project
North East Cambridge LCVA

Title
Figure 4.2 - Zone of Theoretical Visibility Screened Scenario (B) and Viewpoint Locations

Drawing Number
G7336.003

Drawn	Checked	Approved	Scale	Date
JS	RA	RA	1:40,000 @ A3	18/06/2019



Reproduced by permission of Ordnance Survey on behalf of Her Majesty's Stationery Office.
© Crown Copyright and database right 2010. All rights reserved.

B	Amended diagram title	SO	RA	14/08/2019
A	Amendments following client comments	SO	RA	03/06/2019
Rev	Description	Drawn	Approved	Date

TEP | **THE ENVIRONMENT PARTNERSHIP**
Genesis Centre, Birchwood Science Park, Warrington WA3 7BH
Tel 01925 844004 e-mail tep@tep.uk.com www.tep.uk.com

Project
North East Cambridge LCVIA

Title
Development Height Scenarios – High

Figure
Figure 5.1

Drawn	Checked	Approved	Scale	Date
SO	RA	RA	1:10,000 @ A3	08/04/2019



Reproduced by permission of Ordnance Survey on behalf of Her Majesty's Stationery Office.
© Crown Copyright and database right 2010. All rights reserved.

B	Amended diagram title	SO	RA	14/08/2019
A	Amendments following client comments	SO	RA	03/06/2019
Rev	Description	Drawn	Approved	Date

TEP | **THE ENVIRONMENT PARTNERSHIP**
Genesis Centre, Birchwood Science Park, Warrington WA3 7BH
Tel 01925 844004 e-mail tep@tep.uk.com www.tep.uk.com

Project
North East Cambridge LCVIA

Title
Development Height Scenarios – Medium

Figure
Figure 5.2

Drawn	Checked	Approved	Scale	Date
SO	RA	RA	1:10,000 @ A3	08/04/2019



Reproduced by permission of Ordnance Survey on behalf of Her Majesty's Stationery Office.
© Crown Copyright and database right 2010. All rights reserved.

B	Amended diagram title	SO	RA	14/08/2019
A	Amendments following client comments	SO	RA	03/06/2019
Rev	Description	Drawn	Approved	Date



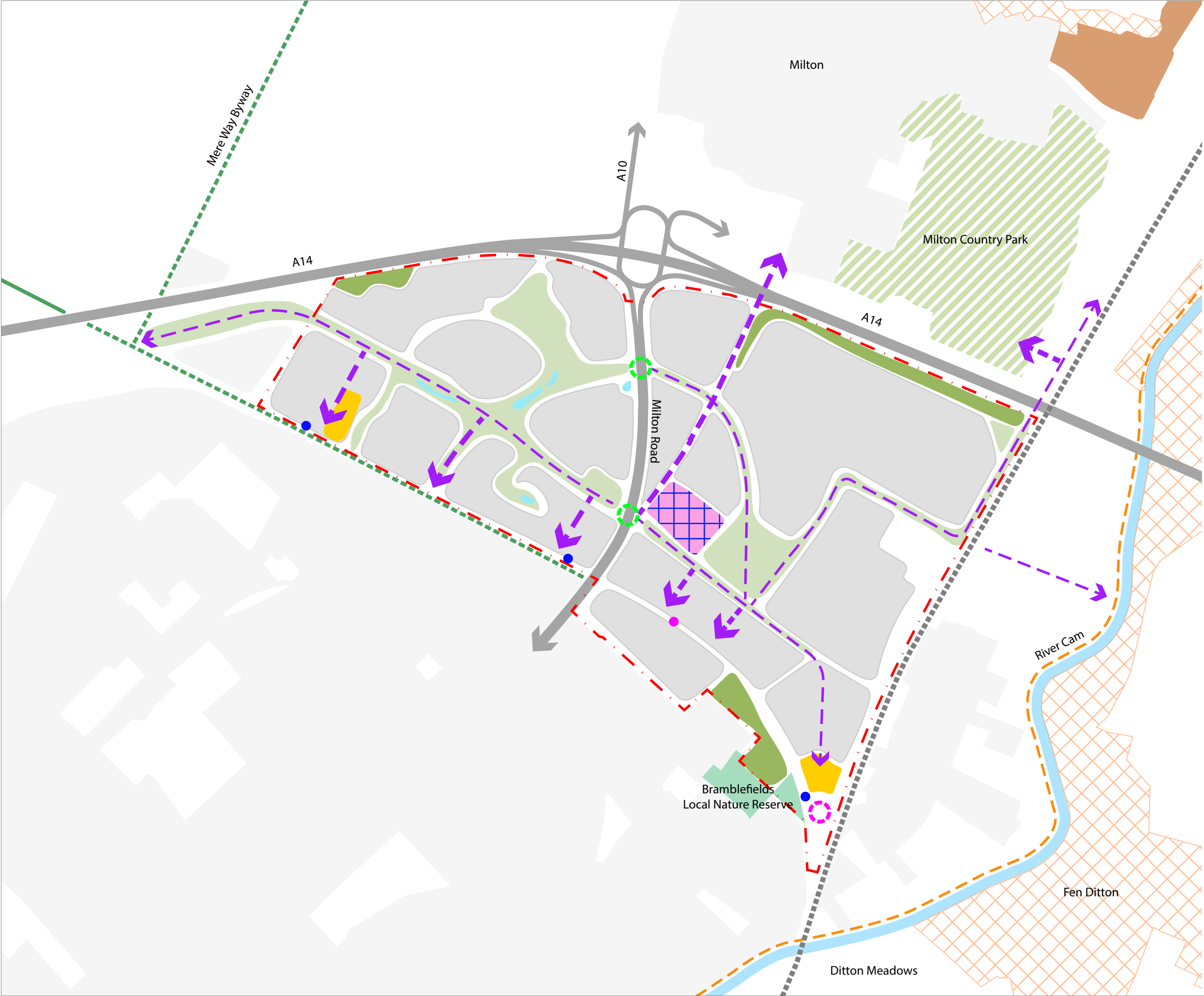
THE ENVIRONMENT PARTNERSHIP
Genesis Centre, Birchwood Science Park, Warrington WA3 7BH
Tel 01925 844004 e-mail tep@tep.uk.com www.tep.uk.com

Project
North East Cambridge LCVIA

Title
Development Height Scenarios – Low

Figure
Figure 5.3

Drawn	Checked	Approved	Scale	Date
SO	RA	RA	1:10,000 @ A3	08/04/2019



- KEY
- Site Boundary
 - Existing Green Infrastructure
 - Proposed Green Infrastructure
 - Development Parcel
 - District Centre
 - Cambridge North Station Local Centre
 - Country Park
 - Conservation Area
 - Local Nature Reserve
 - Scheduled Monument
 - Major Vehicular Corridor (A14 and Milton Road)
 - Primary Movement Routes
 - Secondary Movement Routes
 - Railway Line
 - Existing Ponds
 - Cambridge North Railway Station
 - Proposed Green Bridge
 - Existing Guided Bus Stop
 - Proposed Guided Bus Stop
 - Public Right of Way
 - Existing Cycle and Pedestrian Route along the River Cam

Reproduced by permission of Ordnance Survey on behalf of Her Majesty's Stationary Office.
© Crown Copyright and database right 2010. All rights reserved.

B	Amended diagram title	SO	RA	14/08/2019
A	Amendments following client comments	SO	RA	03/06/2019
Rev	Description	Drawn	Approved	Date



THE ENVIRONMENT PARTNERSHIP
Genesis Centre, Birchwood Science Park, Warrington WA3 7BH
Tel 01925 844004 e-mail tep@tep.uk.com www.tep.uk.com

Project
North East Cambridge LCVIA

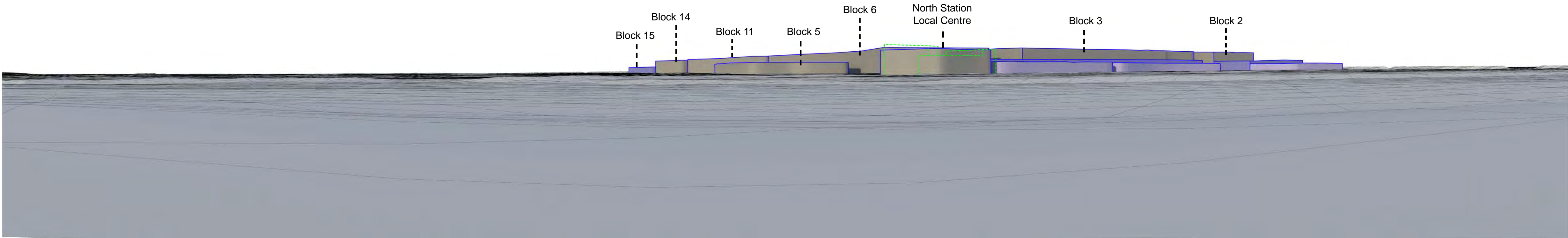
Title
Indicative Development Framework Plan

Figure
Figure 6

Drawn	Checked	Approved	Scale	Date
SO	RA	RA	1:10,000 @ A3	08/04/2019




Existing view
Viewpoint 1 Ditton Meadows on NCN Route 51




Viewpoint 1 – Photomontage wireline



Viewpoint 1 – Photomontage AVR1

 The consented hotel and office buildings at Cambridge North Station are shown as a green dashed line

 Blocks are shaded blue where they are of lower height at the edge of the Site

Viewing Information

This is a composite image made up of 5 No. 50mm photographs joined together horizontally to form an overall field of view which is wider than that seen in detail by the human eye. In each case, the extent of the view has been determined by the characteristics of the view and the extent of the proposed development visible.

For correct perspective viewing, this image must be viewed at an exact distance of

300mm with one eye whilst curving the image in an exact arc of 120 degrees. This image should only be assessed in the real landscape from the same viewpoint.

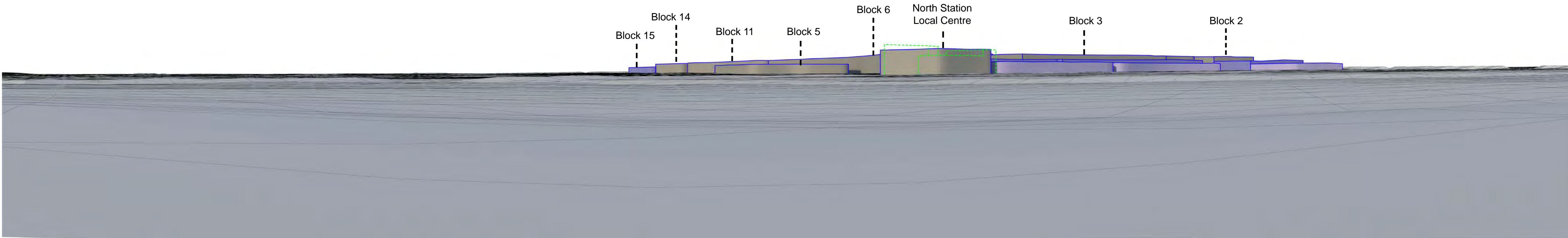
When not in the real landscape in order to provide an accurate representation images should be viewed with one eye by panning across a flat image with the eye remaining at the recommended viewing distance of 300mm from the image.



Rev	Description	Drawn	Approved	Date
Project	North East Cambridge LCVIA			Date of Photograph: 10.12.2018 Lens Type: 50mm
Title	Viewpoint 1 - High Development Height Scenario			OS reference of viewpoint: X= 547776.447 Y= 259986.701
Figure	Figure 7.1			Direction of View: 324° Viewpoint Height: 6.326m AOD
Drawn	SO	Checked AJG	Approved AJG	Horizontal Field of View: 120° Viewing Distance Approx 300mm @ A1




Existing view
Viewpoint 1 Ditton Meadows on NCN Route 51




Viewpoint 1 – Photomontage wireline



Viewpoint 1 – Photomontage AVR1

 The consented hotel and office buildings at Cambridge North Station are shown as a green dashed line

 Blocks are shaded blue where they are of lower height at the edge of the Site

Viewing Information

This is a composite image made up of 5 No. 50mm photographs joined together horizontally to form an overall field of view which is wider than that seen in detail by the human eye. In each case, the extent of the view has been determined by the characteristics of the view and the extent of the proposed development visible.

For correct perspective viewing, this image must be viewed at an exact distance of

300mm with one eye whilst curving the image in an exact arc of 120 degrees. This image should only be assessed in the real landscape from the same viewpoint.

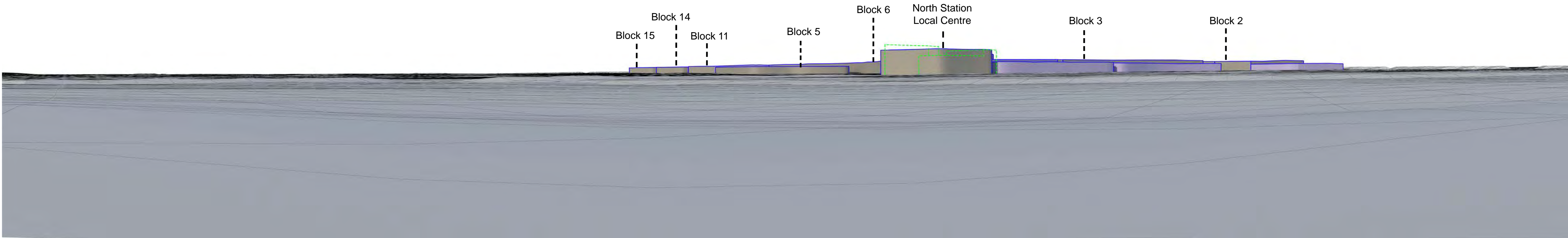
When not in the real landscape in order to provide an accurate representation images should be viewed with one eye by panning across a flat image with the eye remaining at the recommended viewing distance of 300mm from the image.



Rev	Description	Drawn	Approved	Date
Project	North East Cambridge LCVIA			Date of Photograph: 10.12.2018 Lens Type: 50mm
Title	Viewpoint 1 - Medium Development Height Scenario			OS reference of viewpoint: X= 547776.447 Y= 259986.701
Figure	Figure 7.2			Direction of View: 324° Viewpoint Height: 6.326m AOD
Drawn	SO	Checked AJG	Approved AJG	Horizontal Field of View: 120° Viewing Distance Approx 300mm @ A1



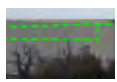
Existing view
Viewpoint 1 Ditton Meadows on NCN Route 51




Viewpoint 1 – Photomontage wireline



Viewpoint 1 – Photomontage AVR1

 The consented hotel and office buildings at Cambridge North Station are shown as a green dashed line

 Blocks are shaded blue where they are of lower height at the edge of the Site

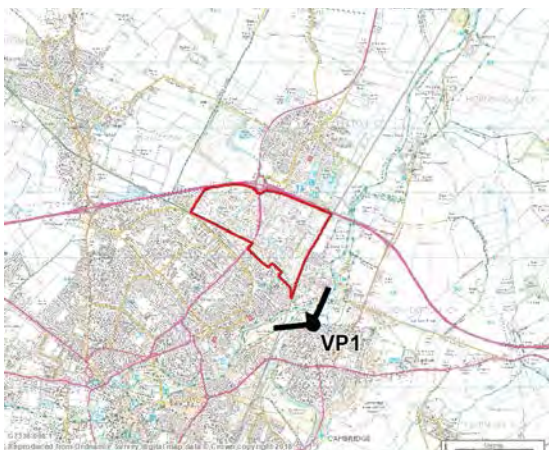
Viewing Information

This is a composite image made up of 5 No. 50mm photographs joined together horizontally to form an overall field of view which is wider than that seen in detail by the human eye. In each case, the extent of the view has been determined by the characteristics of the view and the extent of the proposed development visible.

For correct perspective viewing, this image must be viewed at an exact distance of

300mm with one eye whilst curving the image in an exact arc of 120 degrees. This image should only be assessed in the real landscape from the same viewpoint.

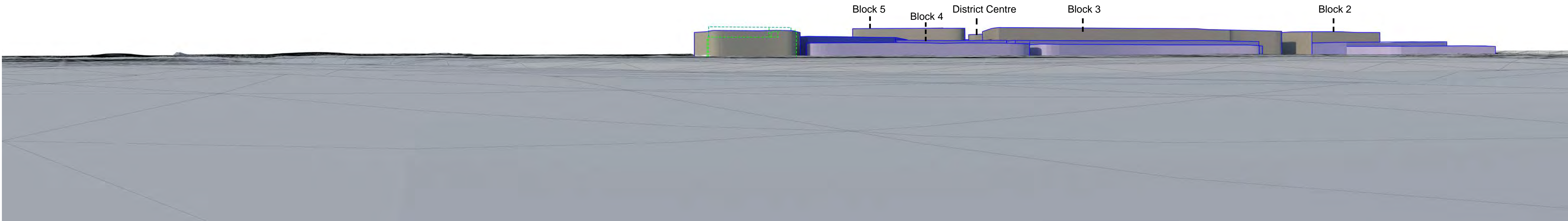
When not in the real landscape in order to provide an accurate representation images should be viewed with one eye by panning across a flat image with the eye remaining at the recommended viewing distance of 300mm from the image.



Rev Description		Drawn	Approved	Date
Project		Date of Photograph: 10.12.2018 Lens Type: 50mm		
Title		OS reference of viewpoint: X= 547776.447 Y= 259986.701		
Figure		Direction of View: 324° Viewpoint Height: 6.326m AOD		
Drawn		Checked	Approved	Horizontal Field of View: 120° Viewing Distance Approx 300mm @ A1
SO		AJG	AJG	




Existing view
Viewpoint 2 Ditton Meadows on Harcamlow Way




Viewpoint 2 – Photomontage wireline



Viewpoint 2 – Photomontage AVR1

 The consented hotel and office buildings at Cambridge North Station are shown as a green dashed line

 Blocks are shaded blue where they are of lower height at the edge of the Site

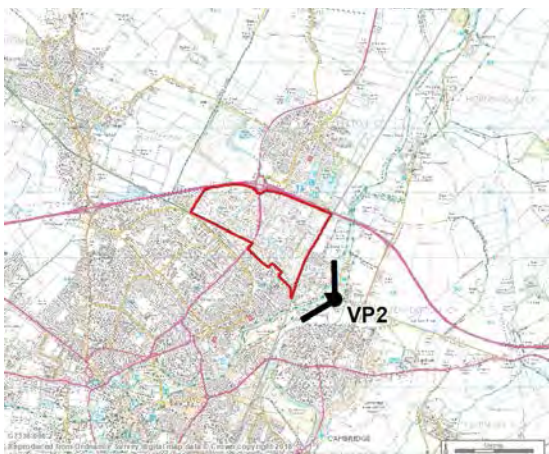
Viewing Information

This is a composite image made up of 5 No. 50mm photographs joined together horizontally to form an overall field of view which is wider than that seen in detail by the human eye. In each case, the extent of the view has been determined by the characteristics of the view and the extent of the proposed development visible.

For correct perspective viewing, this image must be viewed at an exact distance of

300mm with one eye whilst curving the image in an exact arc of 120 degrees. This image should only be assessed in the real landscape from the same viewpoint.

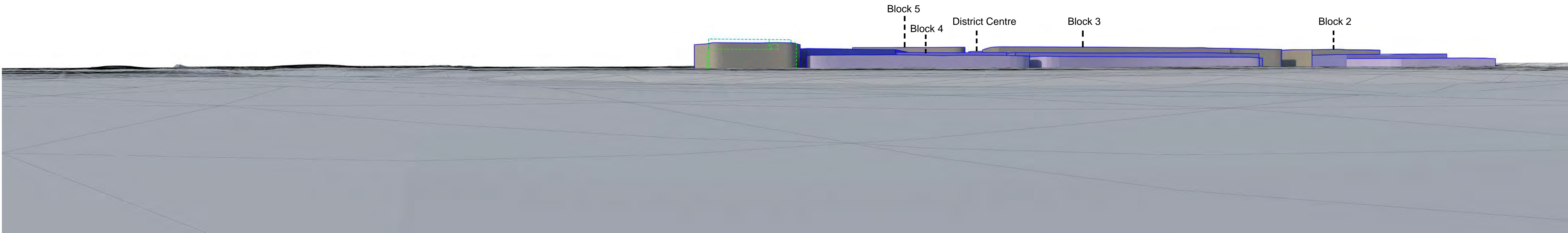
When not in the real landscape in order to provide an accurate representation images should be viewed with one eye by panning across a flat image with the eye remaining at the recommended viewing distance of 300mm from the image.



Rev	Description	Drawn	Approved	Date
Project	North East Cambridge LCVIA			
Title		Date of Photograph: 10.12.2018 Lens Type: 50mm		
Figure		OS reference of viewpoint: X= 548120.792 Y= 260354.547		
Figure 7.4		Direction of View: 299° Viewpoint Height: 6.409m AOD		
Drawn	SO	Checked	AJG	Approved
				AJG
		Horizontal Field of View: 120° Viewing Distance Approx 300mm @ A1		



Existing view
Viewpoint 2 Ditton Meadows on Harcamlow Way



Viewpoint 2 – Photomontage wireline



Viewpoint 2 – Photomontage AVR1

The consented hotel and office buildings at Cambridge North Station are shown as a green dashed line

Blocks are shaded blue where they are of lower height at the edge of the Site

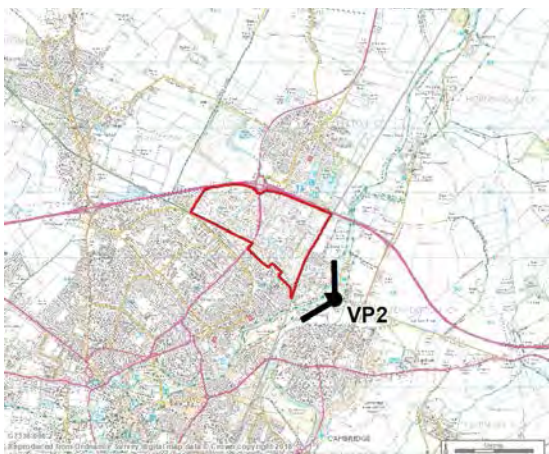
Viewing Information

This is a composite image made up of 5 No. 50mm photographs joined together horizontally to form an overall field of view which is wider than that seen in detail by the human eye. In each case, the extent of the view has been determined by the characteristics of the view and the extent of the proposed development visible.

For correct perspective viewing, this image must be viewed at an exact distance of

300mm with one eye whilst curving the image in an exact arc of 120 degrees. This image should only be assessed in the real landscape from the same viewpoint.

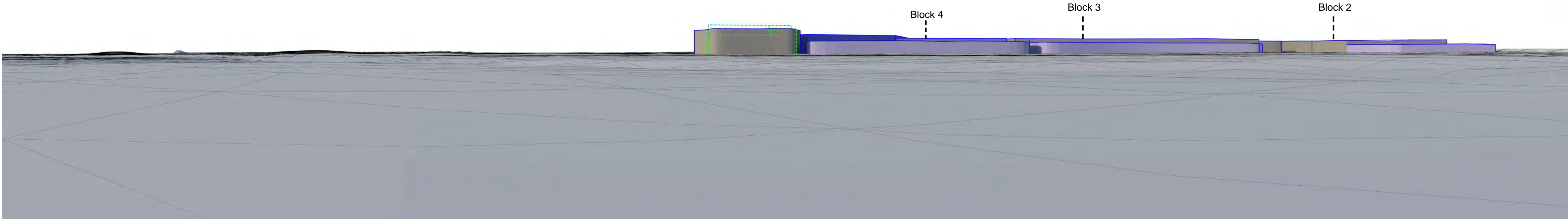
When not in the real landscape in order to provide an accurate representation images should be viewed with one eye by panning across a flat image with the eye remaining at the recommended viewing distance of 300mm from the image.



Rev	Description	Drawn	Approved	Date
Project	North East Cambridge LCVIA			Date of Photograph: 10.12.2018 Lens Type: 50mm
Title	Viewpoint 2 - Medium Development Height Scenario			OS reference of viewpoint: X= 548120.792 Y= 260354.547
Figure	Figure 7.5			Direction of View: 299° Viewpoint Height: 6.409m AOD
Drawn	SO	Checked AJG	Approved AJG	Horizontal Field of View: 120° Viewing Distance Approx 300mm @ A1



Existing view
Viewpoint 2 Ditton Meadows on Harcamlow Way



Viewpoint 2 – Photomontage wireline



Viewpoint 2 – Photomontage AVR1

The consented hotel and office buildings at Cambridge North Station are shown as a green dashed line

Blocks are shaded blue where they are of lower height at the edge of the Site

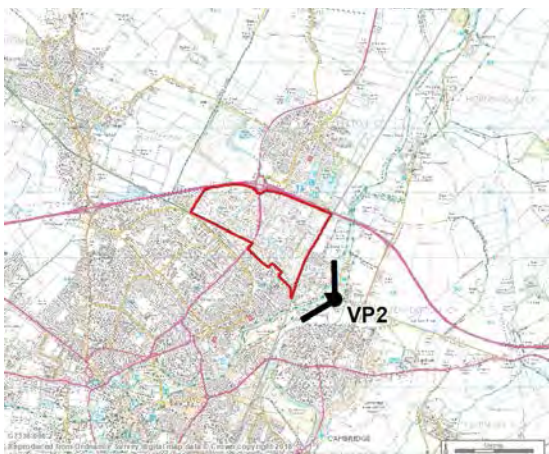
Viewing Information

This is a composite image made up of 5 No. 50mm photographs joined together horizontally to form an overall field of view which is wider than that seen in detail by the human eye. In each case, the extent of the view has been determined by the characteristics of the view and the extent of the proposed development visible.

For correct perspective viewing, this image must be viewed at an exact distance of

300mm with one eye whilst curving the image in an exact arc of 120 degrees. This image should only be assessed in the real landscape from the same viewpoint.

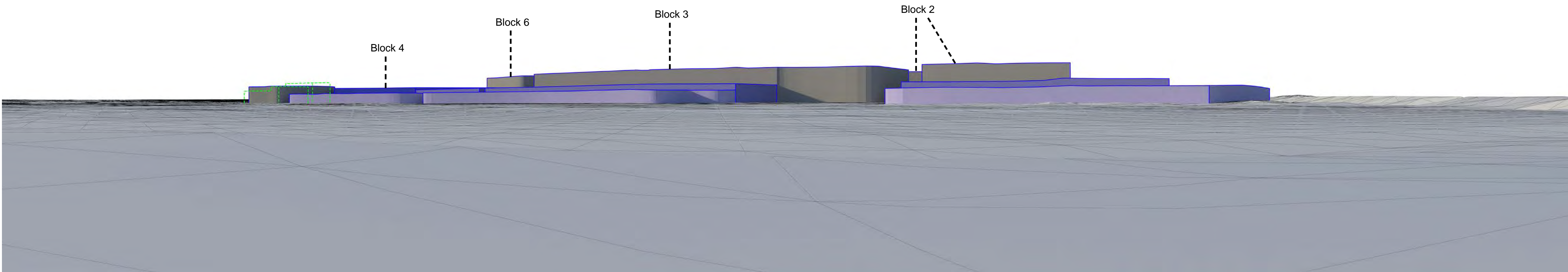
When not in the real landscape in order to provide an accurate representation images should be viewed with one eye by panning across a flat image with the eye remaining at the recommended viewing distance of 300mm from the image.



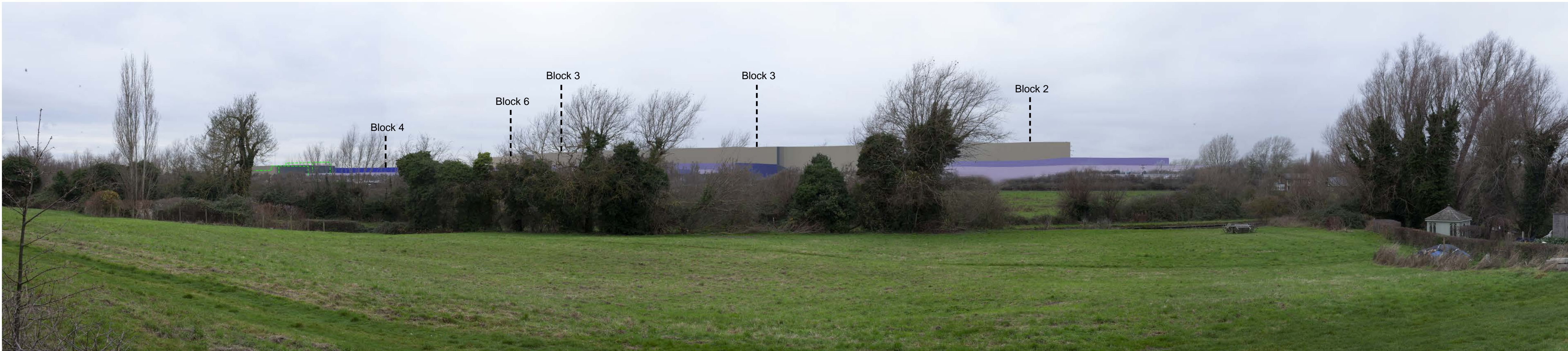
Rev	Description	Drawn	Approved	Date
Project	North East Cambridge LCVIA			Date of Photograph: 10.12.2018 Lens Type: 50mm
Title	Viewpoint 2 - Low Development Height Scenario			OS reference of viewpoint: X= 548120.792 Y= 260354.547
Figure	Figure 7.6			Direction of View: 299° Viewpoint Height: 6.409m AOD
Drawn	SO	Checked	Approved	Horizontal Field of View: 120° Viewing Distance Approx 300mm @ A1
		AJG	AJG	



Existing view
Viewpoint 3 Harcamlow Way, River Cam



Viewpoint 3 – Photomontage wireline



Viewpoint 3 – Photomontage AVR1

The consented hotel and office buildings at Cambridge North Station are shown as a green dashed line

Blocks are shaded blue where they are of lower height at the edge of the Site

Viewing Information

This is a composite image made up of 5 No. 50mm photographs joined together horizontally to form an overall field of view which is wider than that seen in detail by the human eye. In each case, the extent of the view has been determined by the characteristics of the view and the extent of the proposed development visible.

For correct perspective viewing, this image must be viewed at an exact distance of

300mm with one eye whilst curving the image in an exact arc of 120 degrees. This image should only be assessed in the real landscape from the same viewpoint.

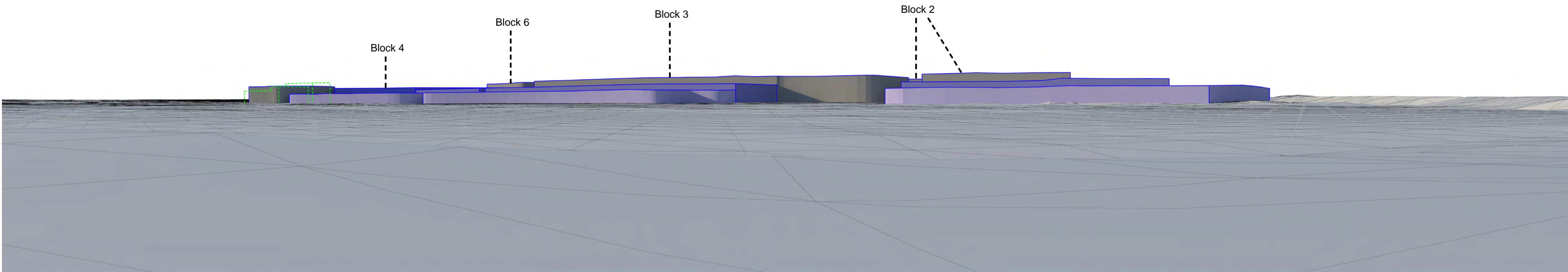
When not in the real landscape in order to provide an accurate representation images should be viewed with one eye by panning across a flat image with the eye remaining at the recommended viewing distance of 300mm from the image.



Rev	Description	Drawn	Approved	Date
Project	North East Cambridge LCVIA			Date of Photograph: 10.12.2018 Lens Type: 50mm
Title	Viewpoint 3 - High Development Height Scenario			OS reference of viewpoint: X= 548392.239 Y= 261241.205
Figure	Figure 7.7			Direction of View: 295° Viewpoint Height: 10.228m AOD
Drawn	SO	Checked AJG	Approved AJG	Horizontal Field of View: 120° Viewing Distance Approx 300mm @ A1



Existing view
Viewpoint 3 Harcamlow Way, River Cam



Viewpoint 3 – Photomontage wireline



Viewpoint 3 – Photomontage AVR1

The consented hotel and office buildings at Cambridge North Station are shown as a green dashed line

Blocks are shaded blue where they are of lower height at the edge of the Site

Viewing Information

This is a composite image made up of 5 No. 50mm photographs joined together horizontally to form an overall field of view which is wider than that seen in detail by the human eye. In each case, the extent of the view has been determined by the characteristics of the view and the extent of the proposed development visible.

For correct perspective viewing, this image must be viewed at an exact distance of

300mm with one eye whilst curving the image in an exact arc of 120 degrees. This image should only be assessed in the real landscape from the same viewpoint.

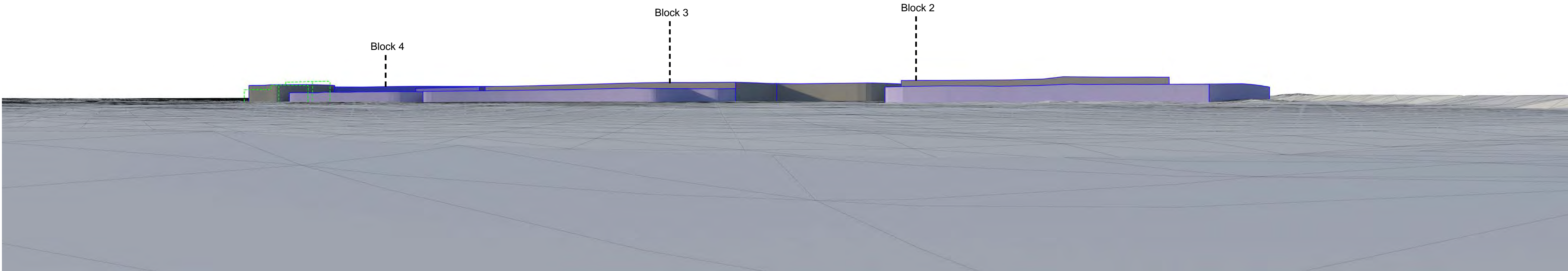
When not in the real landscape in order to provide an accurate representation images should be viewed with one eye by panning across a flat image with the eye remaining at the recommended viewing distance of 300mm from the image.



Rev	Description	Drawn	Approved	Date
Project	North East Cambridge LCVIA			Date of Photograph: 10.12.2018 Lens Type: 50mm
Title	Viewpoint 3 - Medium Development Height Scenario			OS reference of viewpoint: X= 548392.239 Y= 261241.205
Figure	Figure 7.8			Direction of View: 295° Viewpoint Height: 10.228m AOD
Drawn	SO	Checked AJG	Approved AJG	Horizontal Field of View: 120° Viewing Distance Approx 300mm @ A1




Existing view
Viewpoint 3 Harcamlow Way, River Cam




Viewpoint 3 – Photomontage wireline



Viewpoint 3 – Photomontage AVR1

 The consented hotel and office buildings at Cambridge North Station are shown as a green dashed line

 Blocks are shaded blue where they are of lower height at the edge of the Site

Viewing Information

This is a composite image made up of 5 No. 50mm photographs joined together horizontally to form an overall field of view which is wider than that seen in detail by the human eye. In each case, the extent of the view has been determined by the characteristics of the view and the extent of the proposed development visible.

For correct perspective viewing, this image must be viewed at an exact distance of

300mm with one eye whilst curving the image in an exact arc of 120 degrees. This image should only be assessed in the real landscape from the same viewpoint.

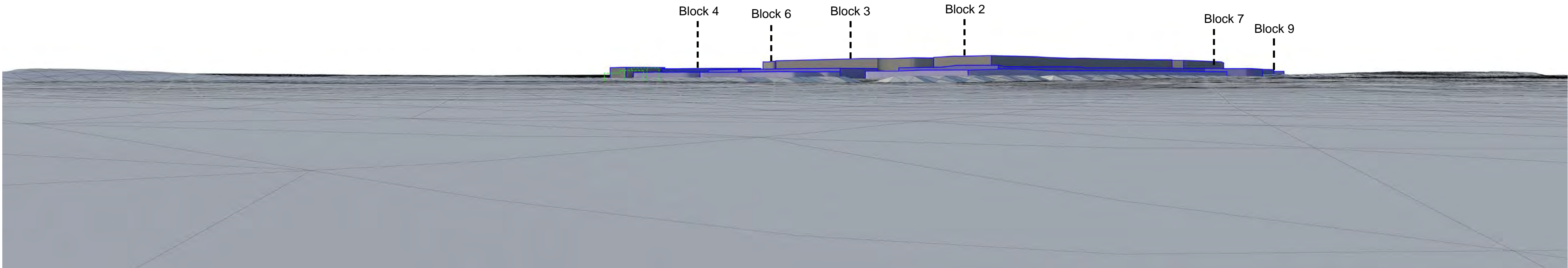
When not in the real landscape in order to provide an accurate representation images should be viewed with one eye by panning across a flat image with the eye remaining at the recommended viewing distance of 300mm from the image.



Rev	Description	Drawn	Approved	Date
Project	North East Cambridge LCVIA			Date of Photograph: 10.12.2018 Lens Type: 50mm
Title	Viewpoint 3 - Low Development Height Scenario			OS reference of viewpoint: X= 548392.239 Y= 261241.205
Figure	Figure 7.9			Direction of View: 295° Viewpoint Height: 10.228m AOD
Drawn	SO	Checked AJG	Approved AJG	Horizontal Field of View: 120° Viewing Distance Approx 300mm @ A1



Existing view
Viewpoint 4 Harcamlow Way, Horningsea Road



Viewpoint 4 – Photomontage wireline



Viewpoint 4 – Photomontage AVR1

The consented hotel and office buildings at Cambridge North Station are shown as a green dashed line

Blocks are shaded blue where they are of lower height at the edge of the Site

Viewing Information

This is a composite image made up of 4 No. 50mm photographs joined together horizontally to form an overall field of view which is wider than that seen in detail by the human eye. In each case, the extent of the view has been determined by the characteristics of the view and the extent of the proposed development visible.

For correct perspective viewing, this image must be viewed at an exact distance of

300mm with one eye whilst curving the image in an exact arc of 100 degrees. This image should only be assessed in the real landscape from the same viewpoint.

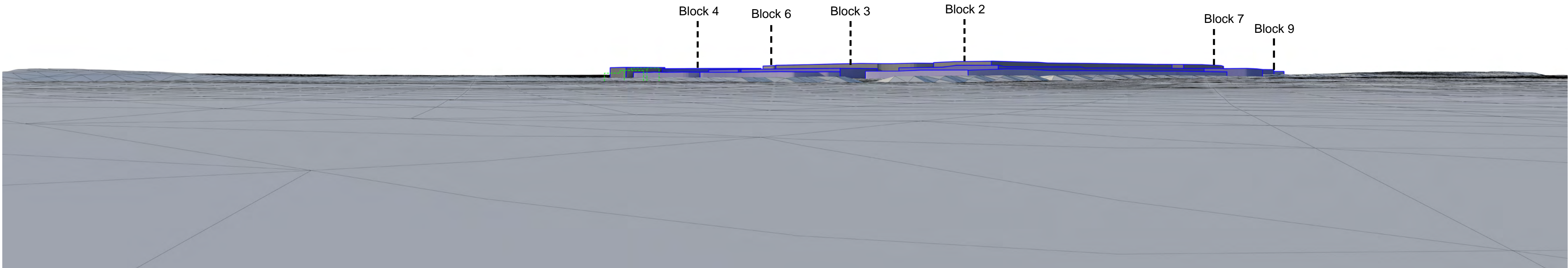
When not in the real landscape in order to provide an accurate representation images should be viewed with one eye by panning across a flat image with the eye remaining at the recommended viewing distance of 300mm from the image.



Rev	Description	Drawn	Approved	Date
Project	North East Cambridge LCVIA			Date of Photograph: 10.12.2018 Lens Type: 50mm
Title	Viewpoint 4 - High Development Height Scenario			OS reference of viewpoint: X= 549176.073 Y= 261881.145
Figure	Figure 7.10			Direction of View: 245° Viewpoint Height: 10.448m AOD
Drawn	SO	Checked AJG	Approved AJG	Horizontal Field of View: 100° Viewing Distance Approx 300mm @ A1




Existing view
Viewpoint 4 Harcamlow Way, Horningsea Road




Viewpoint 4 – Photomontage wireline



Viewpoint 4 – Photomontage AVR1

 The consented hotel and office buildings at Cambridge North Station are shown as a green dashed line

 Blocks are shaded blue where they are of lower height at the edge of the Site

Viewing Information

This is a composite image made up of 4 No. 50mm photographs joined together horizontally to form an overall field of view which is wider than that seen in detail by the human eye. In each case, the extent of the view has been determined by the characteristics of the view and the extent of the proposed development visible.

For correct perspective viewing, this image must be viewed at an exact distance of

300mm with one eye whilst curving the image in an exact arc of 100 degrees. This image should only be assessed in the real landscape from the same viewpoint.

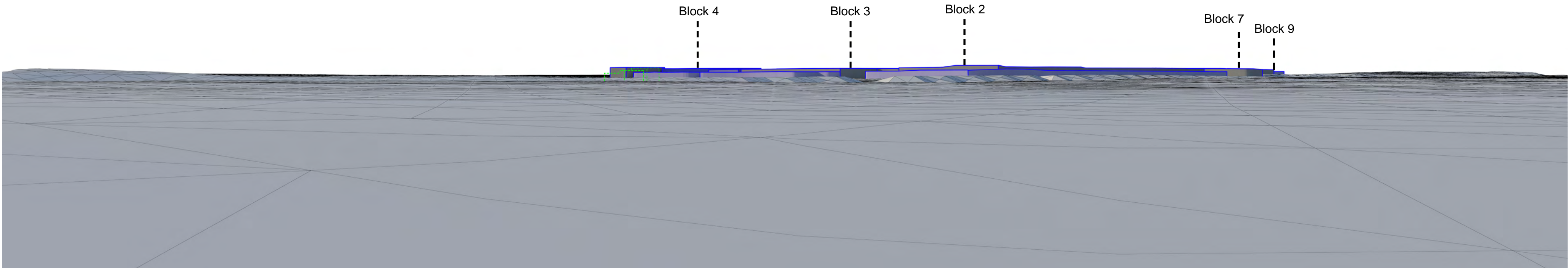
When not in the real landscape in order to provide an accurate representation images should be viewed with one eye by panning across a flat image with the eye remaining at the recommended viewing distance of 300mm from the image.



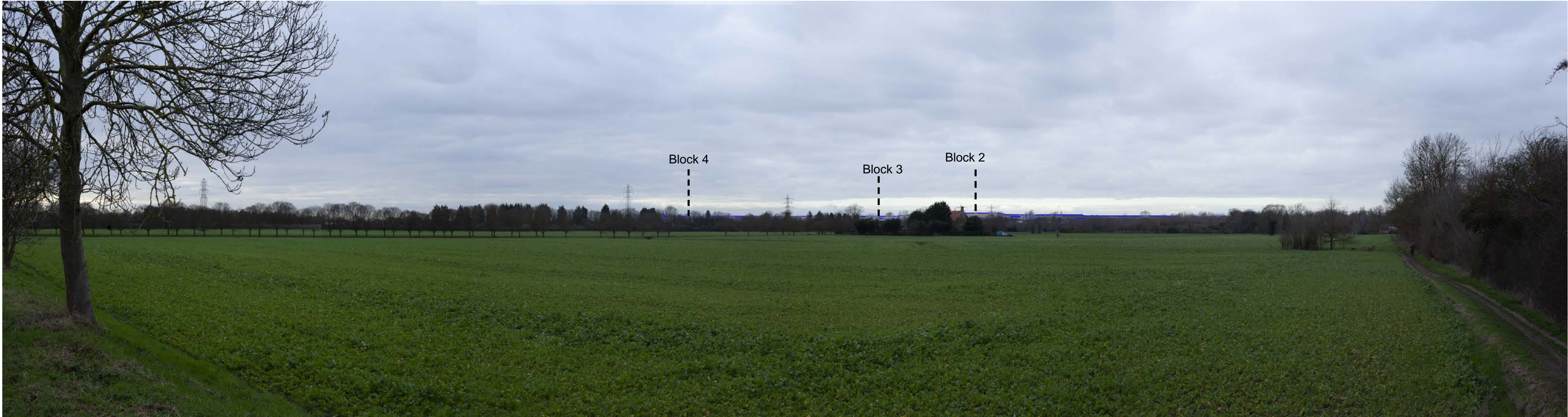
Rev	Description	Drawn	Approved	Date
Project	North East Cambridge LCVIA			
Title		Date of Photograph: 10.12.2018 Lens Type: 50mm		
Figure		OS reference of viewpoint: X= 549176.073 Y= 261881.145		
Figure 7.11		Direction of View: 245° Viewpoint Height: 10.448m AOD		
Drawn	Checked	Approved	Horizontal Field of View: 100° Viewing Distance Approx 300mm @ A1	
SO	AJG	AJG		




Existing view
Viewpoint 4 Harcamlow Way, Horningsea Road




Viewpoint 4 – Photomontage wireline



Viewpoint 4 – Photomontage AVR1

 The consented hotel and office buildings at Cambridge North Station are shown as a green dashed line

 Blocks are shaded blue where they are of lower height at the edge of the Site

Viewing Information

This is a composite image made up of 4 No. 50mm photographs joined together horizontally to form an overall field of view which is wider than that seen in detail by the human eye. In each case, the extent of the view has been determined by the characteristics of the view and the extent of the proposed development visible.

For correct perspective viewing, this image must be viewed at an exact distance of

300mm with one eye whilst curving the image in an exact arc of 100 degrees. This image should only be assessed in the real landscape from the same viewpoint.

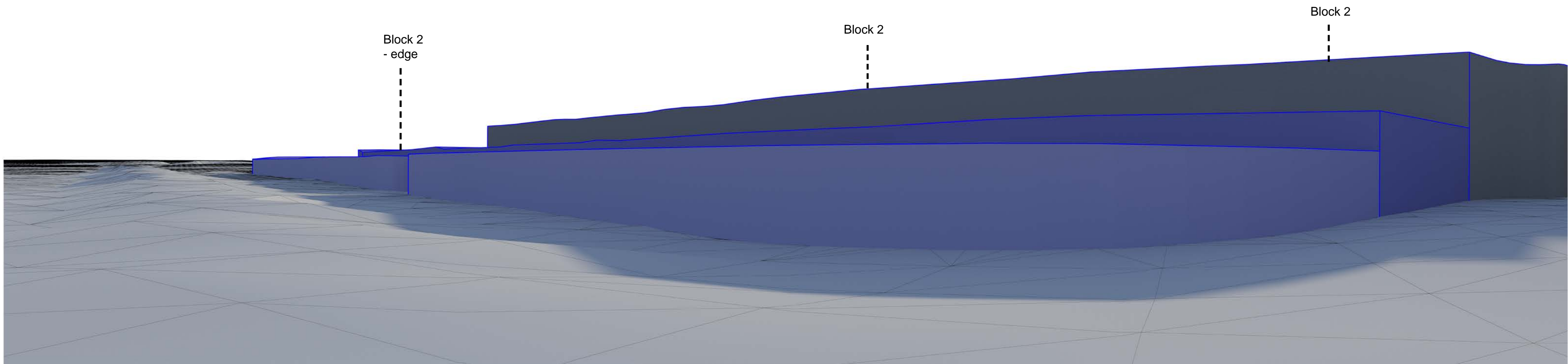
When not in the real landscape in order to provide an accurate representation images should be viewed with one eye by panning across a flat image with the eye remaining at the recommended viewing distance of 300mm from the image.



Rev	Description	Drawn	Approved	Date
Project	North East Cambridge LCVIA			
Title		Date of Photograph: 10.12.2018 Lens Type: 50mm		
Figure		OS reference of viewpoint: X= 549176.073 Y= 261881.145		
Figure 7.12		Direction of View: 245° Viewpoint Height: 10.448m AOD		
Drawn	Checked	Approved	Horizontal Field of View: 100° Viewing Distance Approx 300mm @ A1	
SO	AJG	AJG		




Existing view
Viewpoint 5 NCN Route 11 at Jane Coston Overbridge




Viewpoint 5 – Photomontage wireline



Viewpoint 5 – Photomontage AVR1

 The consented hotel and office buildings at Cambridge North Station are shown as a green dashed line

 Blocks are shaded blue where they are of lower height at the edge of the Site

Viewing Information

This is a composite image made up of 4 No. 50mm photographs joined together horizontally to form an overall field of view which is wider than that seen in detail by the human eye. In each case, the extent of the view has been determined by the characteristics of the view and the extent of the proposed development visible.

For correct perspective viewing, this image must be viewed at an exact distance of

300mm with one eye whilst curving the image in an exact arc of 100 degrees. This image should only be assessed in the real landscape from the same viewpoint.

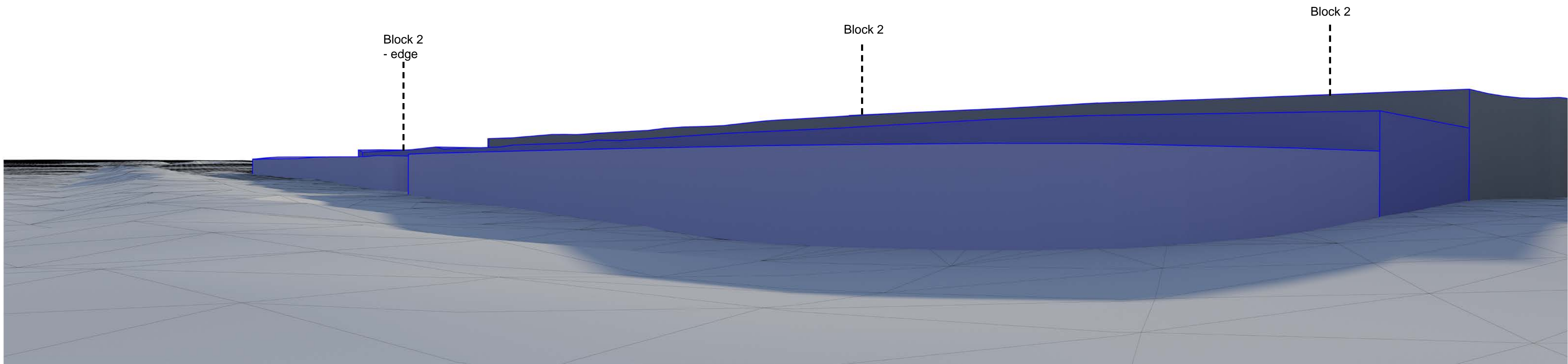
When not in the real landscape in order to provide an accurate representation images should be viewed with one eye by panning across a flat image with the eye remaining at the recommended viewing distance of 300mm from the image.



Rev	Description	Drawn	Approved	Date
Project	North East Cambridge LCVIA			
Title		Date of Photograph: 10.12.2018 Lens Type: 50mm		
Figure 7.13		OS reference of viewpoint: X= 547322.823 Y= 262029.861		
Figure 7.13		Direction of View: 155° Viewpoint Height: 17.531m AOD		
Drawn	SO	Checked	AJG	Approved
				AJG
		Horizontal Field of View: 100° Viewing Distance Approx 300mm @ A1		




Existing view
Viewpoint 5 NCN Route 11 at Jane Coston Overbridge




Viewpoint 5 – Photomontage wireline



Viewpoint 5 – Photomontage AVR1

 The consented hotel and office buildings at Cambridge North Station are shown as a green dashed line

 Blocks are shaded blue where they are of lower height at the edge of the Site

Viewing Information

This is a composite image made up of 4 No. 50mm photographs joined together horizontally to form an overall field of view which is wider than that seen in detail by the human eye. In each case, the extent of the view has been determined by the characteristics of the view and the extent of the proposed development visible.

For correct perspective viewing, this image must be viewed at an exact distance of

300mm with one eye whilst curving the image in an exact arc of 100 degrees. This image should only be assessed in the real landscape from the same viewpoint.

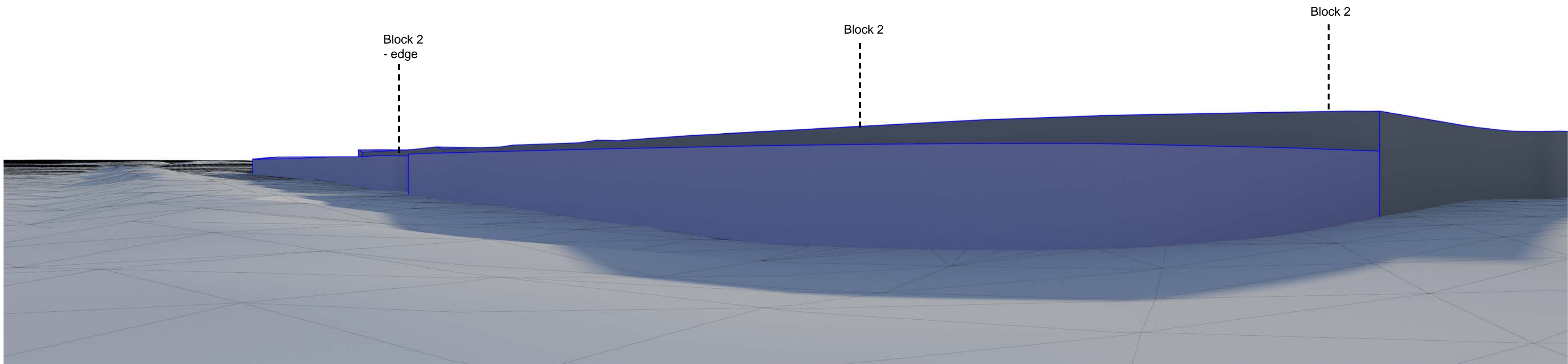
When not in the real landscape in order to provide an accurate representation images should be viewed with one eye by panning across a flat image with the eye remaining at the recommended viewing distance of 300mm from the image.



Rev	Description	Drawn	Approved	Date
Project	North East Cambridge LCVIA			
Title		Date of Photograph: 10.12.2018 Lens Type: 50mm		
Figure		OS reference of viewpoint: X= 547322.823 Y= 262029.861		
Figure 7.14		Direction of View: 155° Viewpoint Height: 17.531m AOD		
Drawn	Checked	Approved	Horizontal Field of View: 100° Viewing Distance Approx 300mm @ A1	
SO	AJG	AJG		




Existing view
Viewpoint 5 NCN Route 11 at Jane Coston Overbridge




Viewpoint 5 – Photomontage wireline



Viewpoint 5 – Photomontage AVR1

- 

The consented hotel and office buildings at Cambridge North Station are shown as a green dashed line
- 

Blocks are shaded blue where they are of lower height at the edge of the Site

Viewing Information

This is a composite image made up of 4 No. 50mm photographs joined together horizontally to form an overall field of view which is wider than that seen in detail by the human eye. In each case, the extent of the view has been determined by the characteristics of the view and the extent of the proposed development visible.

For correct perspective viewing, this image must be viewed at an exact distance of

300mm with one eye whilst curving the image in an exact arc of 100 degrees. This image should only be assessed in the real landscape from the same viewpoint.

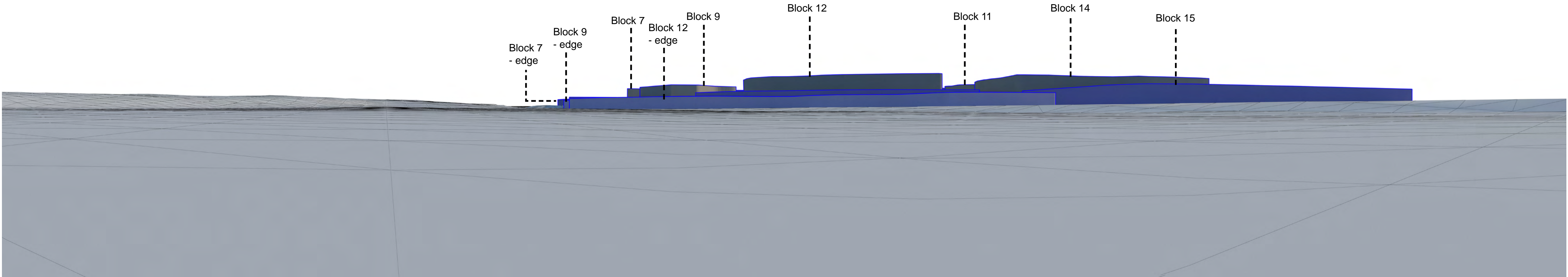
When not in the real landscape in order to provide an accurate representation images should be viewed with one eye by panning across a flat image with the eye remaining at the recommended viewing distance of 300mm from the image.



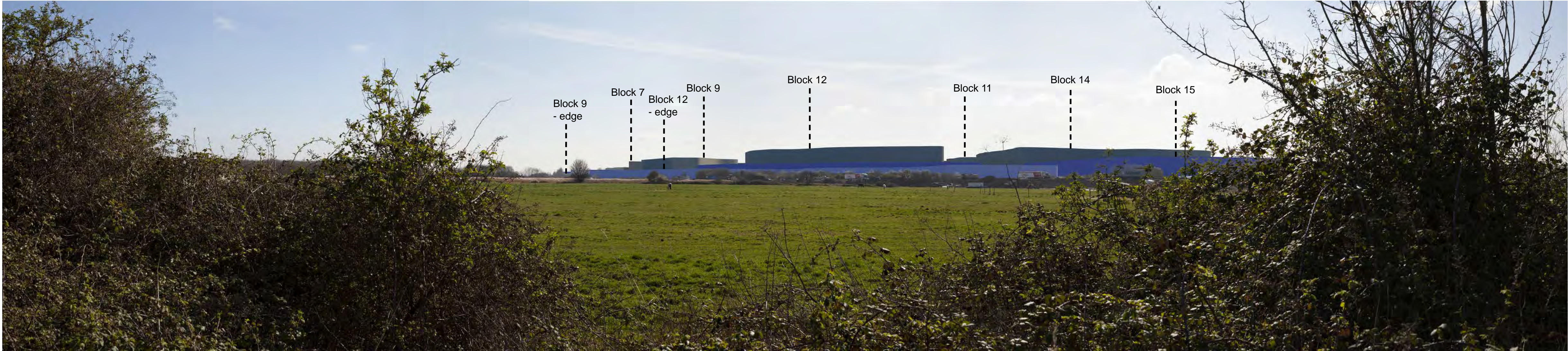
Rev		Description	Drawn	Approved	Date
Project			North East Cambridge LCVIA		
Title			Viewpoint 5 - Low Development Height Scenario		
Figure			Figure 7.15		
Drawn			SO	Checked AJG	Approved AJG
Description			OS reference of viewpoint: X= 547322.823 Y= 262029.861		
Direction of View: 155° Viewpoint Height: 17.531m AOD			Horizontal Field of View: 100° Viewing Distance Approx 300mm @ A1		



Existing view
Viewpoint 6 Mere Way Byway north of the A14



Viewpoint 6 – Photomontage wireline



Viewpoint 6 – Photomontage AVR1

The consented hotel and office buildings at Cambridge North Station are shown as a green dashed line

Blocks are shaded blue where they are of lower height at the edge of the Site

Viewing Information

This is a composite image made up of 5 No. 50mm photographs joined together horizontally to form an overall field of view which is wider than that seen in detail by the human eye. In each case, the extent of the view has been determined by the characteristics of the view and the extent of the proposed development visible.

For correct perspective viewing, this image must be viewed at an exact distance of

300mm with one eye whilst curving the image in an exact arc of 120 degrees. This image should only be assessed in the real landscape from the same viewpoint.

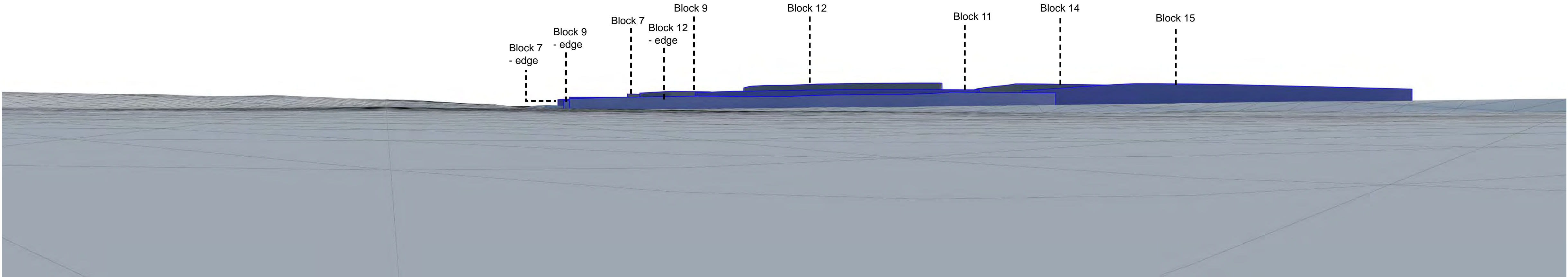
When not in the real landscape in order to provide an accurate representation images should be viewed with one eye by panning across a flat image with the eye remaining at the recommended viewing distance of 300mm from the image.



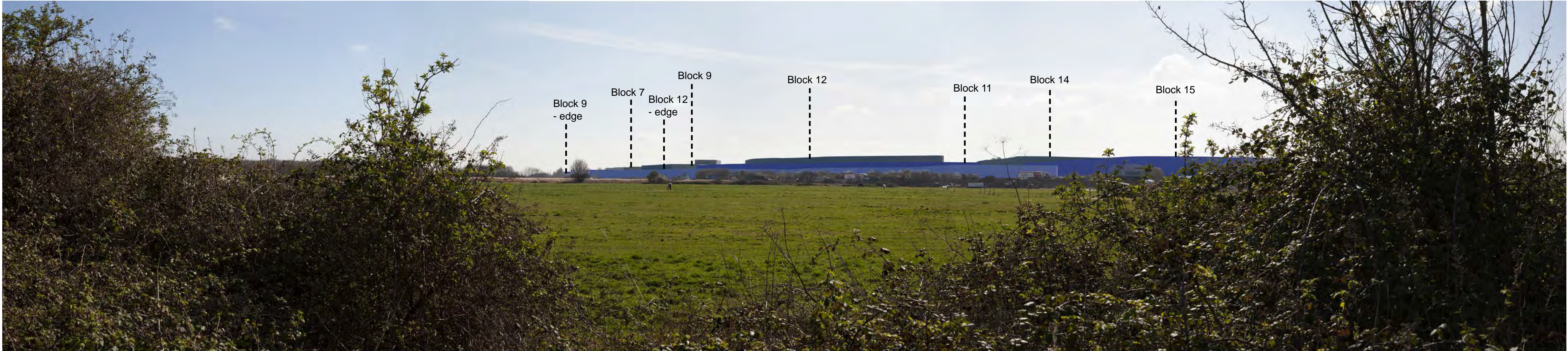
Rev	Description	Drawn	Approved	Date
Project	North East Cambridge LCVIA			Date of Photograph: 26.03.2019 Lens Type: 50mm
Title	Viewpoint 6 - High Development Height Scenario			OS reference of viewpoint: X= 545779.883 Y= 262325.161
Figure	Figure 7.16			Direction of View: 121° Viewpoint Height: 14.553m AOD
Drawn	SO	Checked AJG	Approved AJG	Horizontal Field of View: 120° Viewing Distance Approx 300mm @ A1



Existing view
Viewpoint 6 Mere Way Byway north of the A14



Viewpoint 6 – Photomontage wireline



Viewpoint 6 – Photomontage AVR1

The consented hotel and office buildings at Cambridge North Station are shown as a green dashed line

Blocks are shaded blue where they are of lower height at the edge of the Site

Viewing Information

This is a composite image made up of 5 No. 50mm photographs joined together horizontally to form an overall field of view which is wider than that seen in detail by the human eye. In each case, the extent of the view has been determined by the characteristics of the view and the extent of the proposed development visible.

For correct perspective viewing, this image must be viewed at an exact distance of

300mm with one eye whilst curving the image in an exact arc of 120 degrees. This image should only be assessed in the real landscape from the same viewpoint.

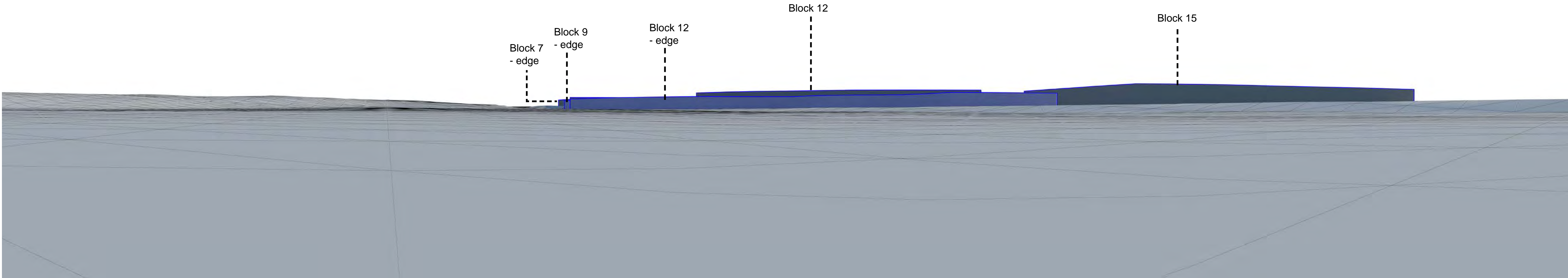
When not in the real landscape in order to provide an accurate representation images should be viewed with one eye by panning across a flat image with the eye remaining at the recommended viewing distance of 300mm from the image.



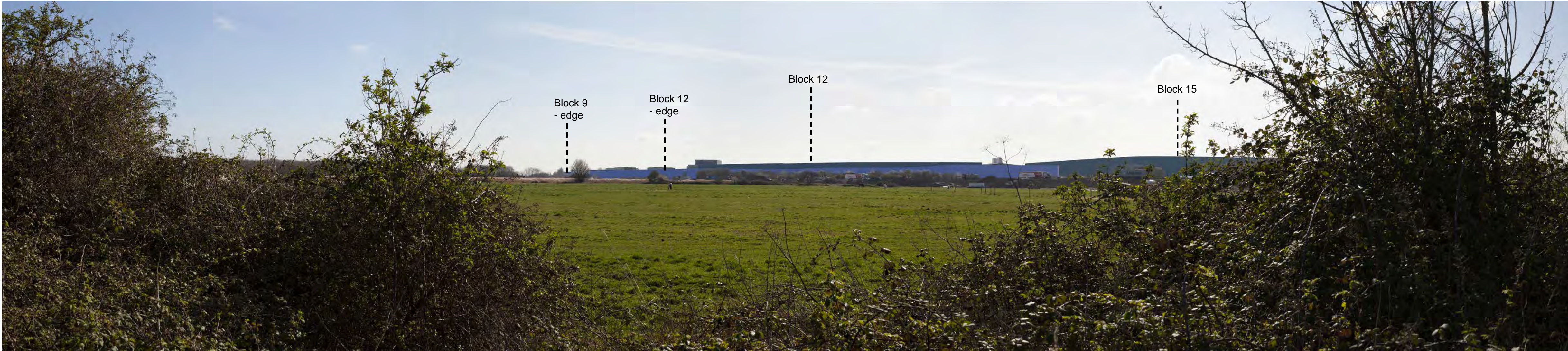
Rev	Description	Drawn	Approved	Date
Project	North East Cambridge LCVIA			Date of Photograph: 26.03.2019 Lens Type: 50mm
Title	Viewpoint 6 - Medium Development Height Scenario			OS reference of viewpoint: X= 545779.883 Y= 262325.161
Figure	Figure 7.17			Direction of View: 121° Viewpoint Height: 14.553m AOD
Drawn	SO	Checked AJG	Approved AJG	Horizontal Field of View: 120° Viewing Distance Approx 300mm @ A1



Existing view
Viewpoint 6 Mere Way Byway north of the A14



Viewpoint 6 – Photomontage wireline



Viewpoint 6 – Photomontage AVR1

The consented hotel and office buildings at Cambridge North Station are shown as a green dashed line

Blocks are shaded blue where they are of lower height at the edge of the Site

Viewing Information
This is a composite image made up of 5 No. 50mm photographs joined together horizontally to form an overall field of view which is wider than that seen in detail by the human eye. In each case, the extent of the view has been determined by the characteristics of the view and the extent of the proposed development visible.

For correct perspective viewing, this image must be viewed at an exact distance of

300mm with one eye whilst curving the image in an exact arc of 120 degrees. This image should only be assessed in the real landscape from the same viewpoint.

When not in the real landscape in order to provide an accurate representation images should be viewed with one eye by panning across a flat image with the eye remaining at the recommended viewing distance of 300mm from the image.



Rev	Description	Drawn	Approved	Date
Project	North East Cambridge LCVIA			
	Date of Photograph: 26.03.2019 Lens Type: 50mm			
Title	Viewpoint 6 - Low Development Height Scenario			
Figure	OS reference of viewpoint: X= 545779.883 Y= 262325.161			
Figure	Direction of View: 121° Viewpoint Height: 14.553m AOD			
Drawn	SO	Checked	AJG	Approved
			AJG	
		Horizontal Field of View: 120° Viewing Distance Approx 300mm @ A1		