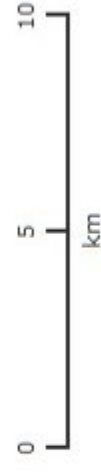


### Legend

#### Aquifer Designation Map (Bedrock) (England)

- Principal
- Secondary A
- Secondary B
- Secondary (undifferentiated)
- Unproductive



Projection = OSGB36

xmin = 508900

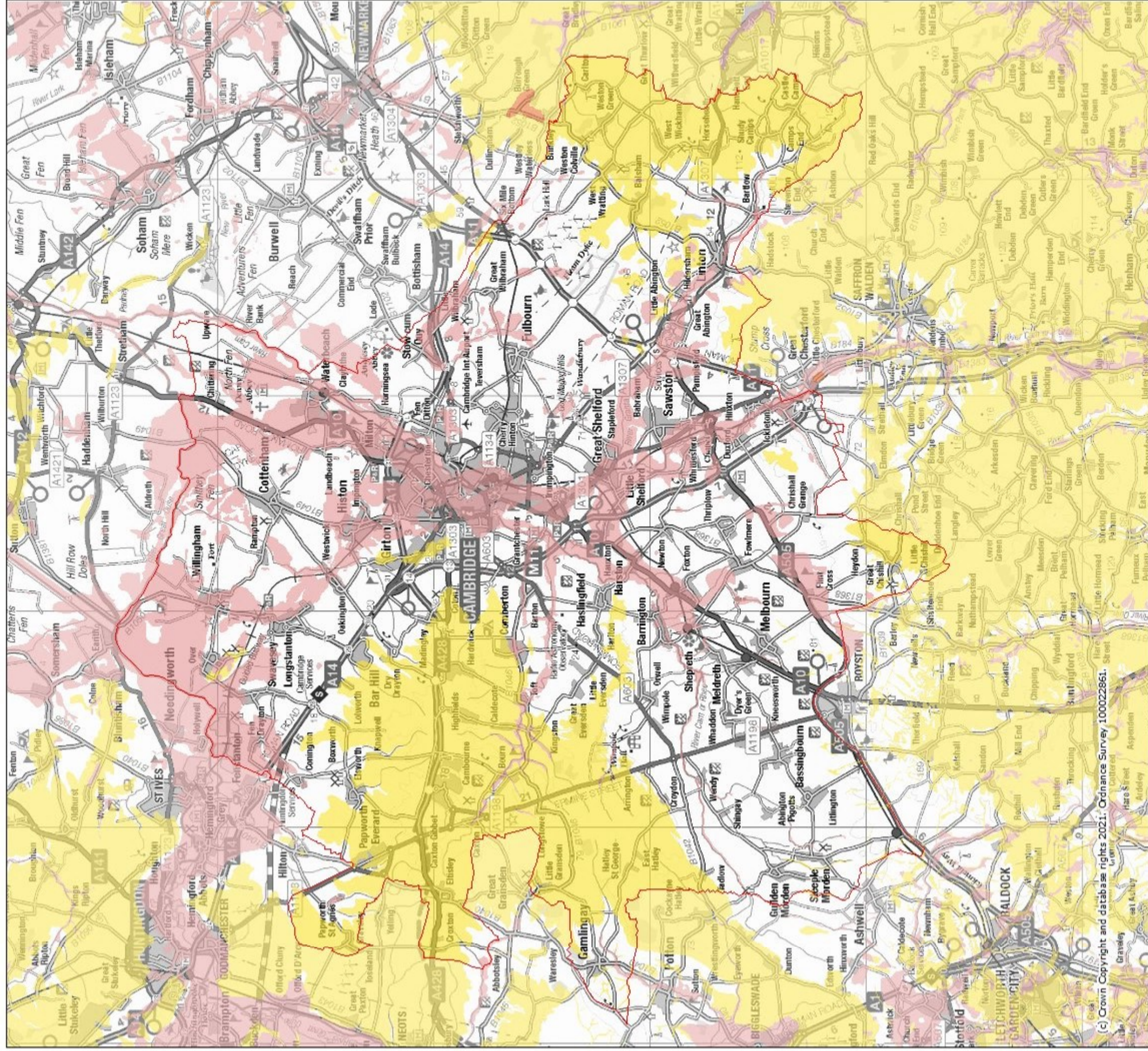
ymin = 236600

xmax = 579200

ymax = 270100

Map produced by MAGIC on 18 August, 2021.  
Copyright resides with the data suppliers and the map must not be reproduced without their permission. Some information in MAGIC is a snapshot of the information that is being maintained or continually updated by the originating organisation. Please refer to the metadata for details as information may be illustrative or representative rather than definitive at this stage.



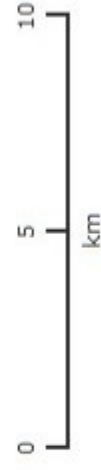


(c) Crown Copyright and database rights 2021. Ordnance Survey 100022861.

## Legend

### Aquifer Designation Map (Superficial Drift) (England)

- Principal
- Secondary A
- Secondary B
- Secondary (undifferentiated)
- Unknown (lakes+landslip)
- Unproductive



Projection = OSGB36

xmin = 508900

ymin = 236600

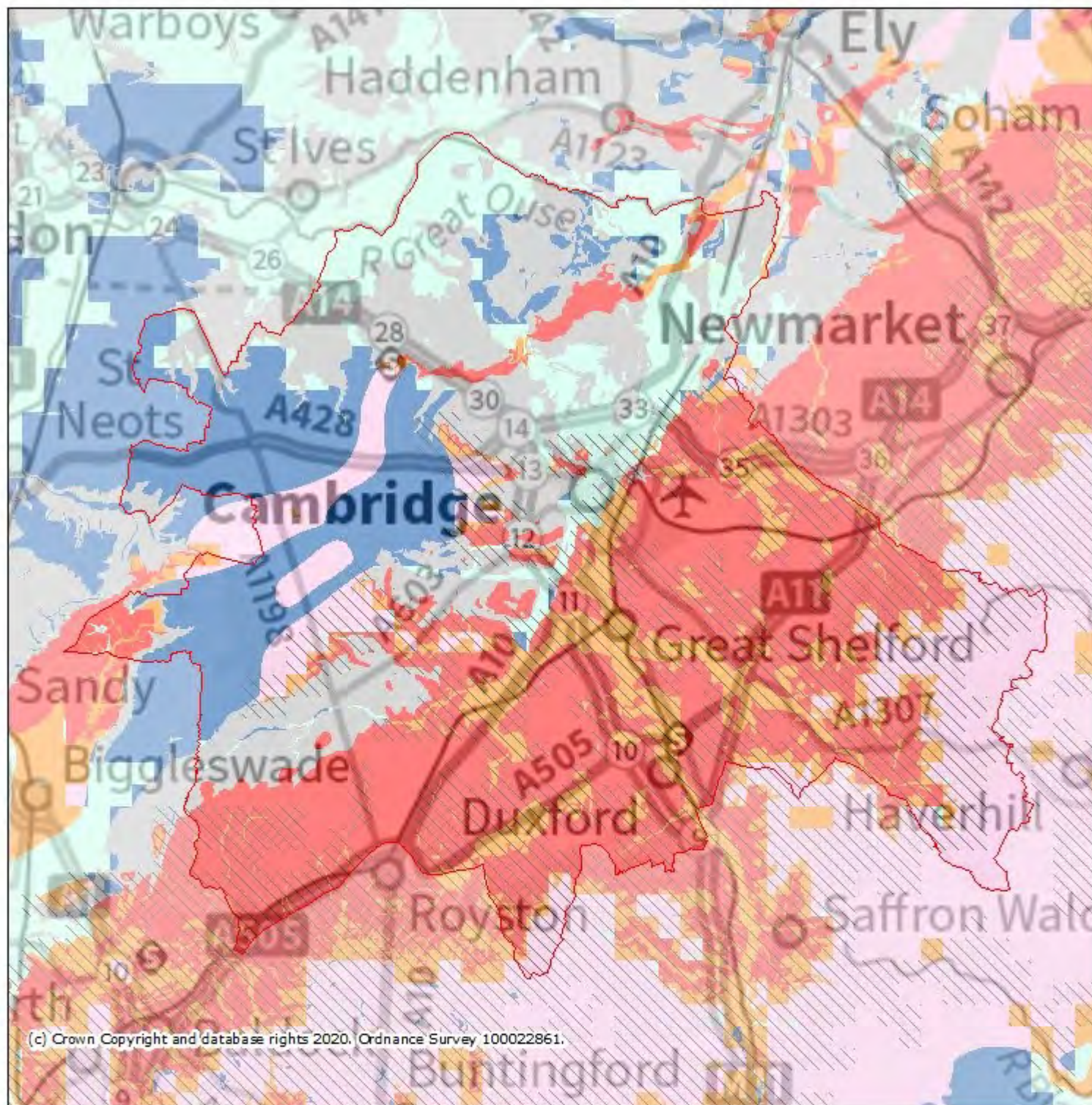
xmax = 579200

ymax = 270100

Map produced by MAGIC on 18 August, 2021.  
Copyright resides with the data suppliers and the map must not be reproduced without their permission.  
Some information in MAGIC is a snapshot of the information that is being maintained or continually updated by the originating organisation. Please refer to the metadata for details as information may be illustrative or representative rather than definitive at this stage.



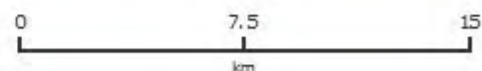
# MAGiC Groundwater Vulnerability



## Legend

### Groundwater Vulnerability Map (England)

- Local Information
- Soluble Rock Risk
- High
- Medium - High
- Medium
- Medium - Low
- Low
- Unproductive



Projection = OSGB36

xmin = 492400

ymin = 231200

xmax = 594000

ymax = 279500

Map produced by MAGiC on 16 September, 2020.  
Copyright resides with the data suppliers and the map must not be reproduced without their permission. Some information in MAGiC is a snapshot of the information that is being maintained or continually updated by the originating organisation. Please refer to the metadata for details as information may be illustrative or representative rather than definitive at this stage.